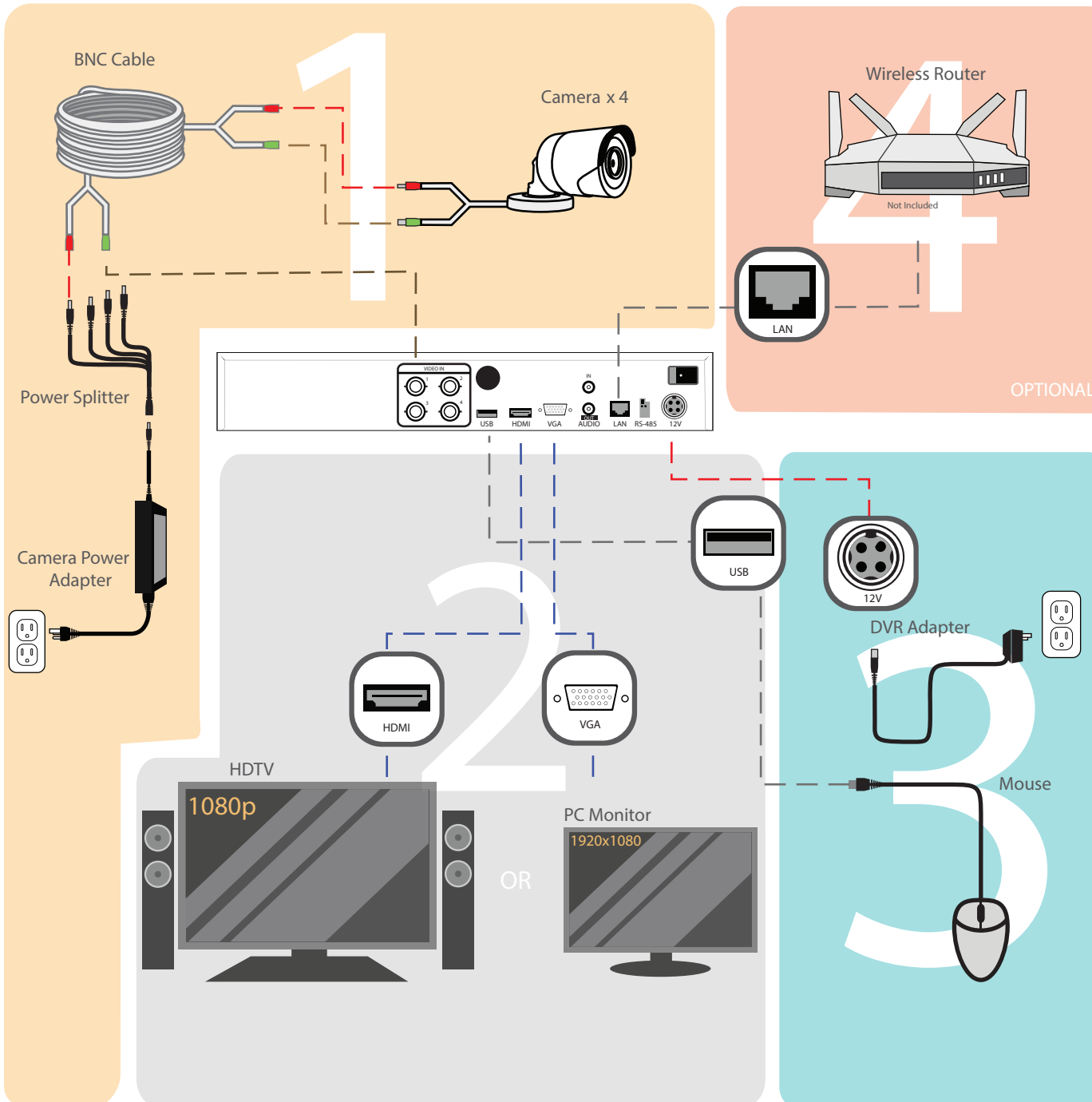


We recommend testing all the cameras and cables prior to installation.



Step 1. Connect your cameras

- Connect the green BNC plug and red power plug of the siamese cable into the camera
- Connect the opposite green BNC plug and red power plug into the camera power splitter as well as video in connector on the DVR (Repeat 3x)
- Connect the power splitter into camera power supply

Step 2. Connect to your monitor/TV

- Connect your DVR and TV/monitor with a HDMI or VGA cable (Not included)

Note: Your monitor/TV must support the output resolution of the DVR or you may get a black screen or a possible error message. You cannot use a laptop as a display.

Step 3. Connect the mouse and power

- Connect the mouse to the USB port
- Connect the 12V DVR power adapter to the DVR

Step 4. Connect to your network (OPTIONAL)

- Connect the LAN port on the DVR to the LAN port on your router via an Ethernet cable for remote viewing on your mobile phone, tablets, PC and Mac

Note: The DVR will still work as a standalone video recorder if you do not have internet connection and skip this step.

Step 5. Configure the start up wizard

- The connection is now completed. Turn on the power switch and follow the start-up wizard on your screen to configure the DVR. (next page)