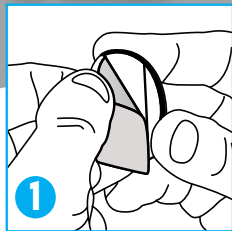


Simple Slide

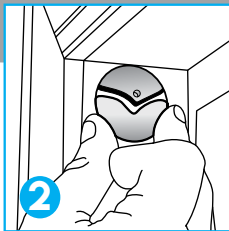
No Tools Roller Shade Brackets

To Install:



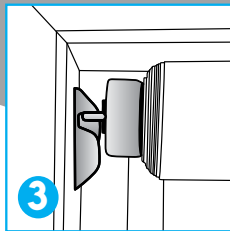
Peel

Remove adhesive liner



Stick

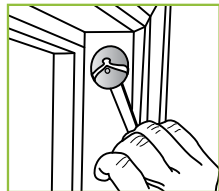
Place brackets with Command™ tab pointed down on both and press firmly



Slide

Insert round pin of shade into circular hole of bracket. Then slide flat pin into channel of bracket until it nests firmly

To Remove:



Pull
tab
down

Redi Shade

www.redishade.com