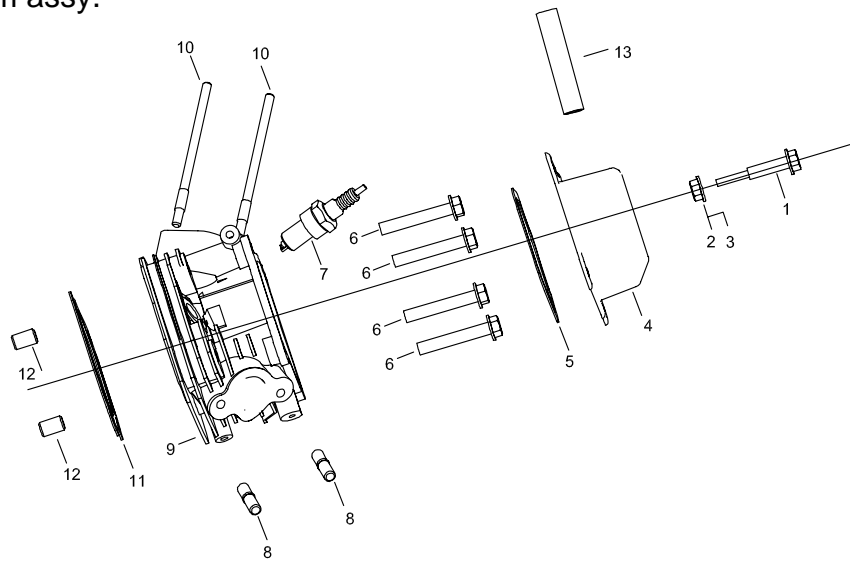


10000W Dual-Fuel Generator

Cylinder head system assy.

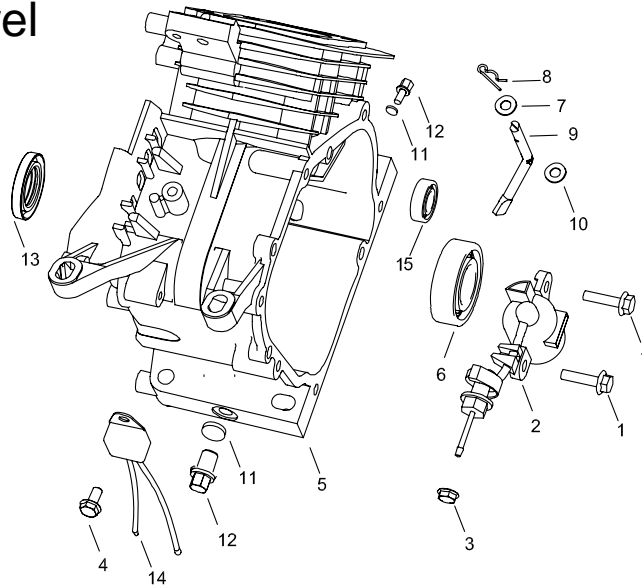


A

APA Part No.	JD Part No.	Description	Qty
APGG10000-A-01-JD	JF240.1.1-4	HEAD COVER COMP. BOLT	1
APGG10000-A-02-JD	JF240.1.1-6	HEAD COVER WASHER COMP	1
APGG10000-A-03-JD	JF240.1.1-5	WASHER COVER PACKING	1
APGG10000-A-04-JD	JF240.1.3-1	HEAD COVER COMP	1
APGG10000-A-05-JD	JF240.1.1-3	HEAD COVER PACKING	1
APGG10000-A-06-JD	JF340.2-4	FLANGE BOLT (M10X80)	4
APGG10000-A-07-JD	JF168.10-1	SPARK PLUG	1
APGG10000-A-08-JD	JF240.1-4B	EXHAUST PIPE STUD BOLT	2
APGG10000-A-09-JD	JF420.1.1	CYLINDER HEAD COMP	1
APGG10000-A-10-JD	JF240.1-2B	CARBURETOR STUD BOLT	2
APGG10000-A-11-JD	JF420.2-3	CYLINDER HEAD SEALING PAD	1
APGG10000-A-12-JD	JF340.2-5	DOWEL PIN (φ10×φ12×20)	2
APGG10000-A-13-JD	JF340.1.1-2B	BREATHER TUBE	1

10000W Dual-Fuel Generator

Cylinder barrel

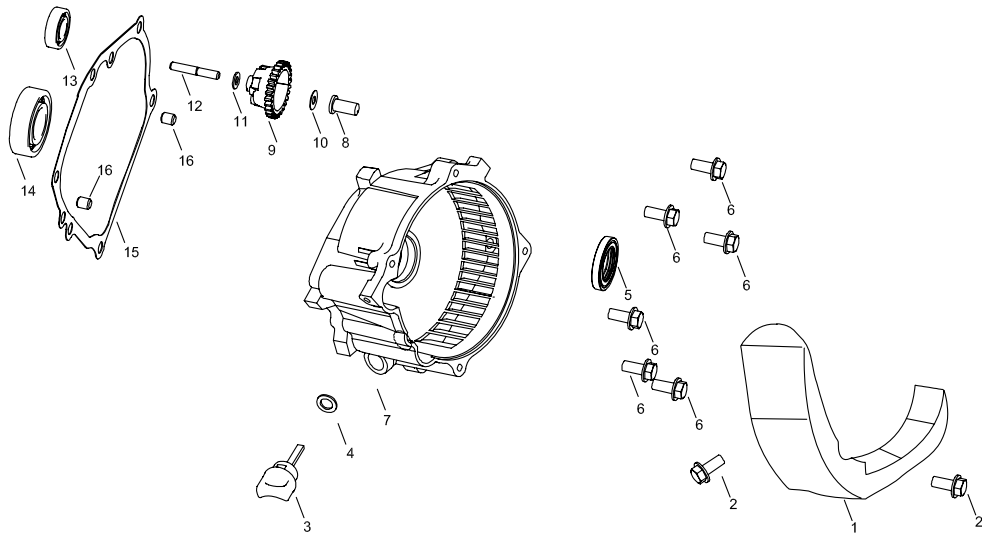


B

APA Part No.	JD Part No.	Description	Qty
APGG10000-B-01-JD	20.4-M6*16	HEX HEAD FLANGE BOLT (M6X 16)	2
APGG10000-B-02-JD	JF340.14.1	OIL LEVEL SWITCH ASSY	1
APGG10000-B-03-JD	20.6-M10	FLANGE NUT (M10)	1
APGG10000-B-04-JD	20.4-M6*12	HEX HEAD FLANGE BOLT (M6X 12)	1
APGG10000-B-05-JD	JF420.2.1-1	CRANK CASE	1
APGG10000-B-06-JD	20.2-6207	BALL BEARING (6207)	1
APGG10000-B-07-JD	JF168.11.2-8	WASHER($\varnothing 8.3 \times \varnothing 17 \times 1$)	1
APGG10000-B-08-JD	JF168.11.2-2	LOCK PIN (10 mm)	1
APGG10000-B-09-JD	JF340.11.2-1	GOVERNOR ARM SHAFT	1
APGG10000-B-10-JD	JF340.11.2-9	OILSEAL ($\varnothing 8 \times \varnothing 14 \times 5$)	1
APGG10000-B-11-JD	JF240.2-7	DRAIN PLUG WASHER (12mm)	1
APGG10000-B-12-JD	JF240.2-6	DRAIN PLUG BOLT	1
APGG10000-B-13-JD	20.1-35*52*7	OIL SEAL 35*52*7	1
APGG10000-B-14-JD	JF168.14-1	OIL PROTECTOR	1
APGG10000-B-15-JD	20.2-6202	BALL BEARING (6202)	1

10000W Dual-Fuel Generator

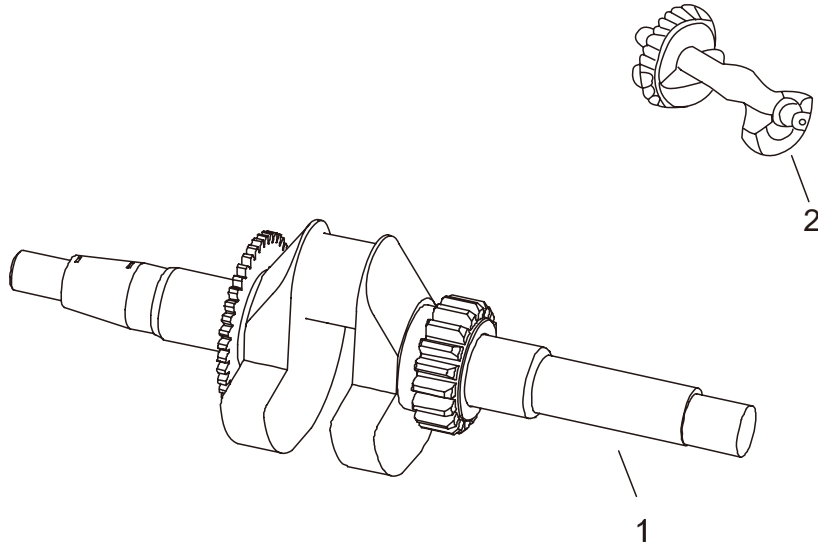
Crankcase cover system assy.



APA Part No.	JD Part No.	Description	Qty
APGG10000-C-01-JD	JF340.17.3	DUCT COVER	1
APGG10000-C-02-JD	20.4-M8*35	FLANGE BOLT (M8 X 35)	1
APGG10000-C-03-JD	JF240.15-3B	OIL SCALE	1
APGG10000-C-04-JD	JF340.15-5	OIL SCALE SEAL RING	1
APGG10000-C-05-JD	20.1-35*52*7	OIL SEAL	1
APGG10000-C-06-JD	JF340.15-2	FLANGE BOLT (M8X35)	6
APGG10000-C-07-JD	JF340.15-1B	CRANKCASE COVER	1
APGG10000-C-08-JD	JF340.11.1-3	GOVERNOR SLIDER	1
APGG10000-C-09-JD	JF340.11.1.1	GOVERNOR GEAR	1
APGG10000-C-10-JD	JF340.11.1-1	SLIDER WASHER (6 mm)	1
APGG10000-C-11-JD	JF168.11.1-2	GOVERNOR GEAR WASHER	1
APGG10000-C-12-JD	JF340.11.1.2	SLIDER SHAFT	1
APGG10000-C-13-JD	20.2-6202	BALL BEARING (6202)	1
APGG10000-C-14-JD	20.2-6207	BALL BEARING (6207)	1
APGG10000-C-15-JD	JF340.2-2	CRANKCASE COVER PAD	1
APGG10000-C-16-JD	JF168.15-4	DOWEL PIN (8X12)	2

10000W Dual-Fuel Generator

Crankshaft system assy.

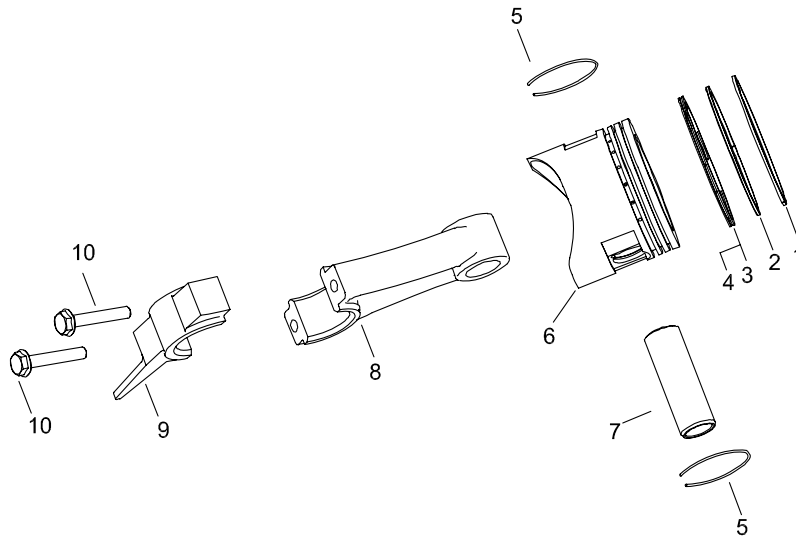


D

APA Part No.	JD Part No.	Description	Qty
APGG10000-D-01-JD	JF420.4.2	CRANKSHAFT COMP.(Tapper shaft)	1
APGG10000-D-02-JD	JF340.4-2	BALANCER WEIGHT	1

10000W Dual-Fuel Generator

Piston & Connecting Rod Assy.

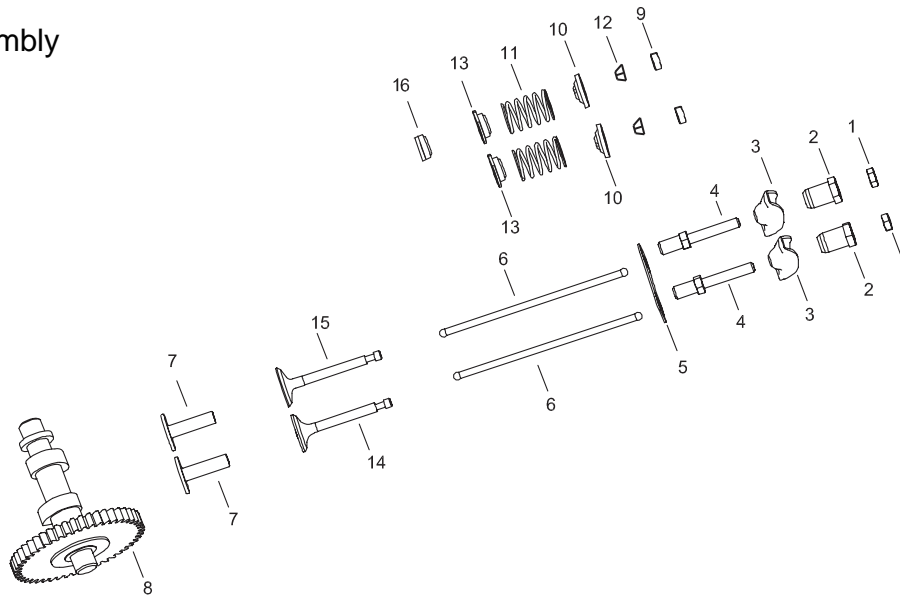


E

APA Part No.	JD Part No.	Description	Qty
APGG10000-E-01-JD	JF420.3-1C	COMPRESSION RING A	1
APGG10000-E-02-JD	JF420.3-2C	COMPRESSION RING B	1
APGG10000-E-03-JD	JF420.3-3C-1	OIL RING A	1
APGG10000-E-04-JD	JF420.3-3C-2	OIL RING B	1
APGG10000-E-05-JD	JF340.3-6	PISTON PIN CLIP (20 mm)	1
APGG10000-E-06-JD	JF420.3-5C	PISTON	1
APGG10000-E-07-JD	JF390.3-4	PISTON PIN	1
APGG10000-E-08-JD	JF420.3.1-1	CONNECTING ROD	1
APGG10000-E-09-JD	JF340.3.1-2	CONNECTING COVER	1
APGG10000-E-10-JD	JF340.3.1-3	CONNECTING ROD BOLT	2

10000W Dual-Fuel Generator

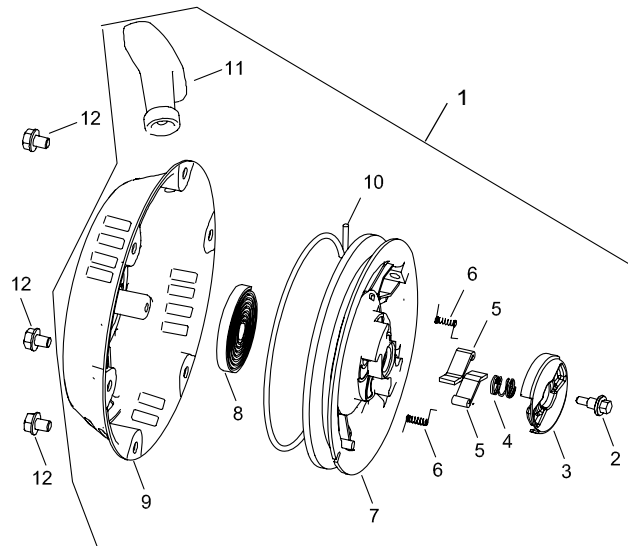
Valve Train Assembly



APA Part No.	JD Part No.	Description	Qty
APGG10000-F-01-JD	JF168.1.2-17	PIVOT ADJUSTING NUT	2
APGG10000-F-02-JD	JF340.1.2-8	ROCKER ARM PIVOT	2
APGG10000-F-03-JD	JF340.1.2-9	ROCKER ARM	2
APGG10000-F-04-JD	JF340.1.2-7	PIVOT BOLT (M8)	2
APGG10000-F-05-JD	JF340.1.2-16	PUSH ROD GUIDE PLATE	2
APGG10000-F-06-JD	JF340.1.2-14	ROD PUSH	2
APGG10000-F-07-JD	JF340.1.2-15	VALVE LIFTER	2
APGG10000-F-08-JD	JF340.5	CAMSHAFT	1
APGG10000-F-09-JD	JF340.1.2-13	EX. VALVE HELMET	2
APGG10000-F-10-JD	JF340.1.2-11	VALVE SPRING RETAINER	2
APGG10000-F-11-JD	JF420.1.2-10	VALVE SPRING	2
APGG10000-F-12-JD	JF340.1.2-12	VALVE SPILT COLLAR	4
APGG10000-F-13-JD	JF340.1.2-19	VALVE SPRING SEAT	2
APGG10000-F-14-JD	JF420.1.2-3	EX. VALVE	1
APGG10000-F-15-JD	JF340.1.2-4B	IN. VALVE	1
APGG10000-F-16-JD	JF340.1.2.1	OIL SEAL	1

10000W Dual-Fuel Generator

Recoil Starter Assy.

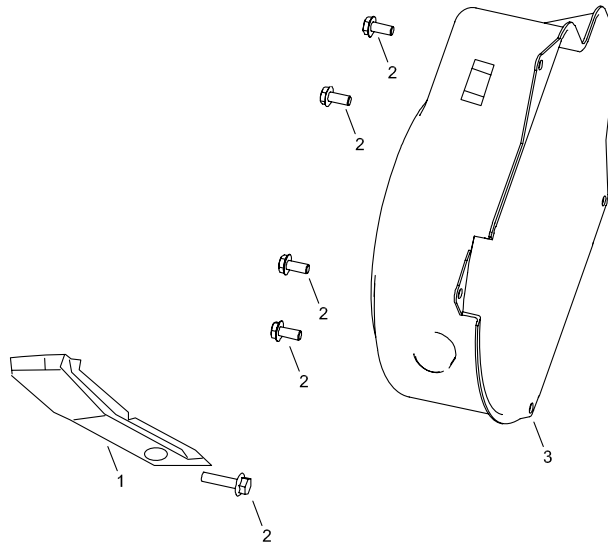


G

APA Part No.	JD Pa# No.	Description	Qty
APGG10000-G-01-JD	JF340.13.1	RECOIL STARTER ASSY.	1
APGG10000-G-02-JD	JF340.13.1-7	SETTING SCREW	1
APGG10000-G-03-JD	JF340.13.1-6	SPRING RETAINER	1
APGG10000-G-04-JD	JF340.13.1-8	PLATEN SPRING	2
APGG10000-G-05-JD	JF340.13.1-5	STARTER DETENT	2
APGG10000-G-06-JD	JF340.13.1-4	DETENT SPRING	2
APGG10000-G-07-JD	JF340.13.1-3	RECOIL STARTER REEL	1
APGG10000-G-08-JD	JF340.13.1-9	START RETURN SPRING	1
APGG7500-G-09-JD	JF340.13.1.1	RECOIL STARTER CASE COMP.	1
APGG10000-G-10-JD	JF340.13.1-2	RECOIL STARTER ROPE	1
APGG10000-G-11-JD	JF340.13.1-1	STARTER KNOB	1
APGG10000-G-12-JD	20.4-M6*8	FLANGE BOLT (M6X8)	3

10000W Dual-Fuel Generator

Fan Cover Assy.

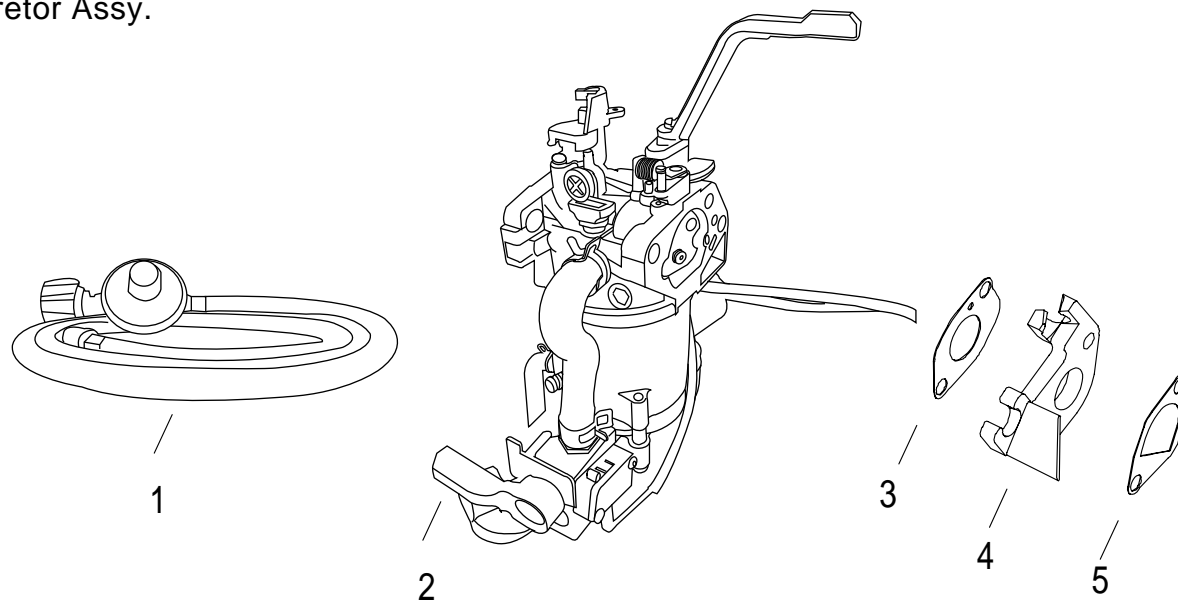


H

APA Part No.	JD Part No.	Description	Qty
APGG10000-H-01-JD	JF420.12-1	SHROUD	1
APGG10000-H-02-JD	20.4-M6*12	FLANGE BOLT (M6 X 12)	4
APGG10000-H-03-JD	JF340.13.2	FAN COVER COMP.	1

10000W Dual-Fuel Generator

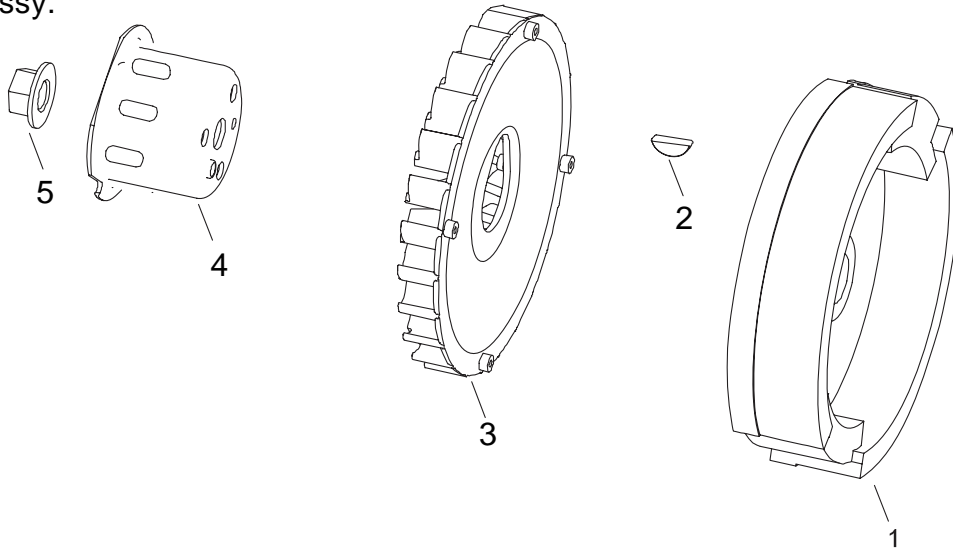
Carburetor Assy.



APA Part No.	JD Part No	Description	Qty
APG10000GL-I-01-JD	JF420GL.9-4	PROPANE SUPPLY HOSE	1
APG10000GL-I-02-JD	JF420GL.9.2	CARBURETOR	1
APG10000-I-03-JD	JF340.9-3	CARBURETOR PAPER GASKET	1
APG10000-I-04-JD	JF340.9-1A	CARBURETOR INSULATING PLATE	1
APG10000-I-05-JD	JF340.1-3	INTAKE PIPE GASKET	1

10000W Dual-Fuel Generator

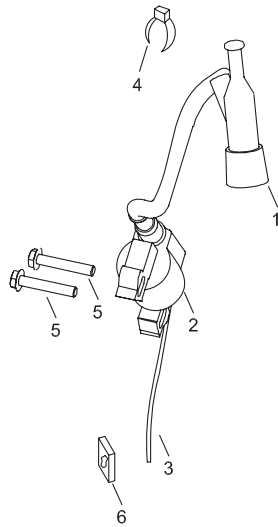
Flywheel Assy.



APA Part No.	JD Part No.	Description	Qty
APGG10000-J-01-JD	JF420.4.1	FLYWHEEL	1
APGG10000-J-02-JD	JF168.4.2-2	SPECIAL WOODRUFF KEY	1
APGG10000-J-03-JD	JF340.12-1	COOLING FAN	1
APGG10000-J-04-JD	JF340.13-1	STARTER PULLEY	1
APGG10000-J-05-JD	JF240.4-1	FLYWHEEL NUT (M16)	1

10000W Dual-Fuel Generator

Ignition System Assy.

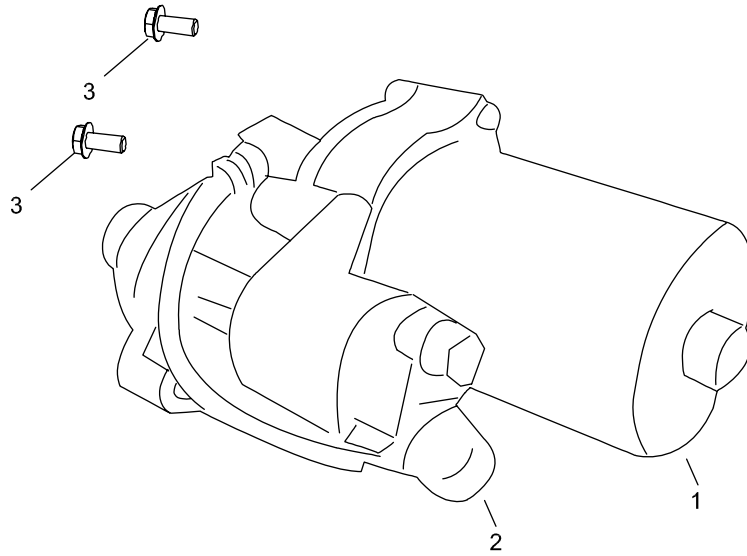


K

APA Part No.	JD Part No.	Description	Qty
APGG10000-K-01-JD	JF340.10.2-1	NOISE SUPPRESSOR CAP ASSY	1
APGG10000-K-02-JD	JF340.10.2-2	IGNITION COIL ASSY	1
APGG10000-K-03-JD	JF340.10.2-3	STOP SWITCH CORD	1
APGG10000-K-04-JD	JF340.10-3	STOP SWITCH CORD HOLDER	1
APGG10000-K-05-JD	20.4-M6*25	FLANGE BOLT (M6 X 25)	1
APGG10000-K-06-JD	JF340.12-4	CORD GROMMET	

10000W Dual-Fuel Generator

Starter Motor Assy.

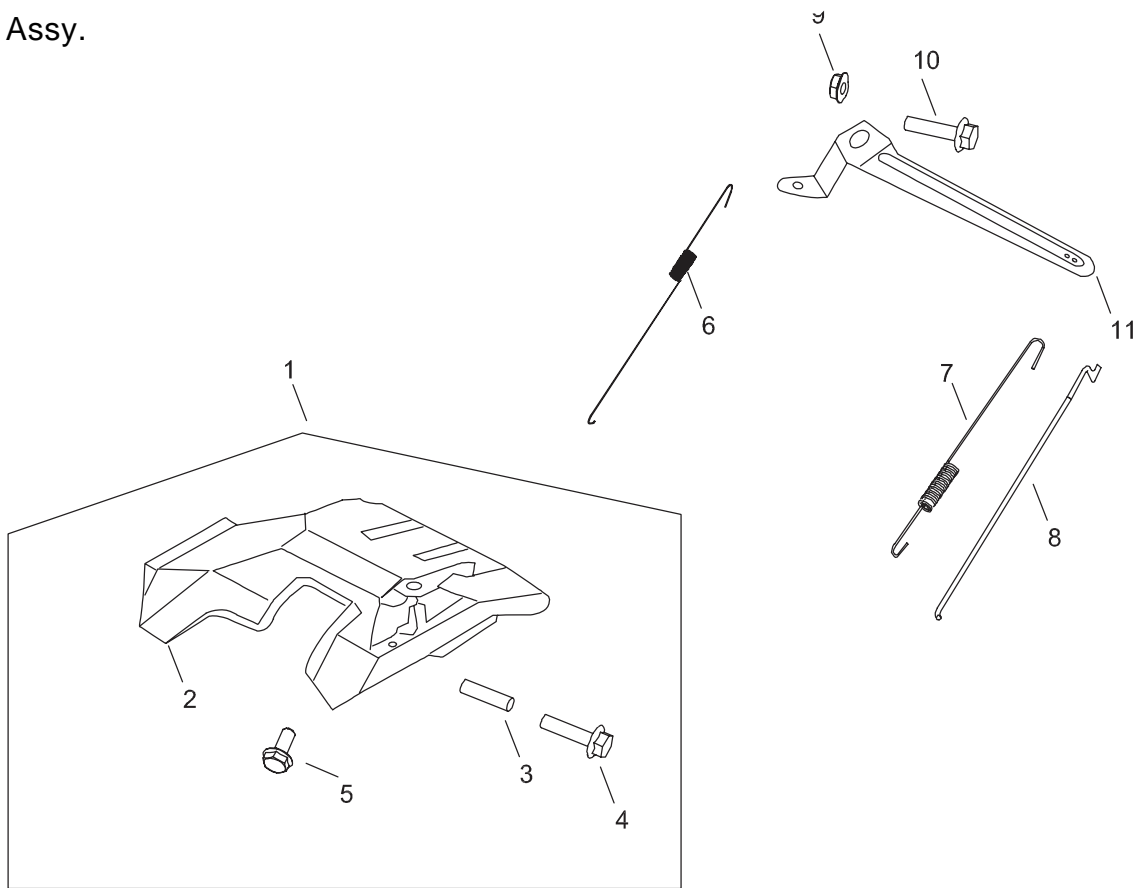


L

APA Part No.	JD Part No.	Description	Qty
APGG10000-L-01-JD	JF340.18-1	STARTER MOTOR	1
APGG10000-L-02JD	JF340.18-2	SOLENOID	1
APGG10000-L-03-JD	20.4-M8*35	FLANGE BOLT (M8x35)	2

10000W Dual-Fuel Generator

Control Assy.

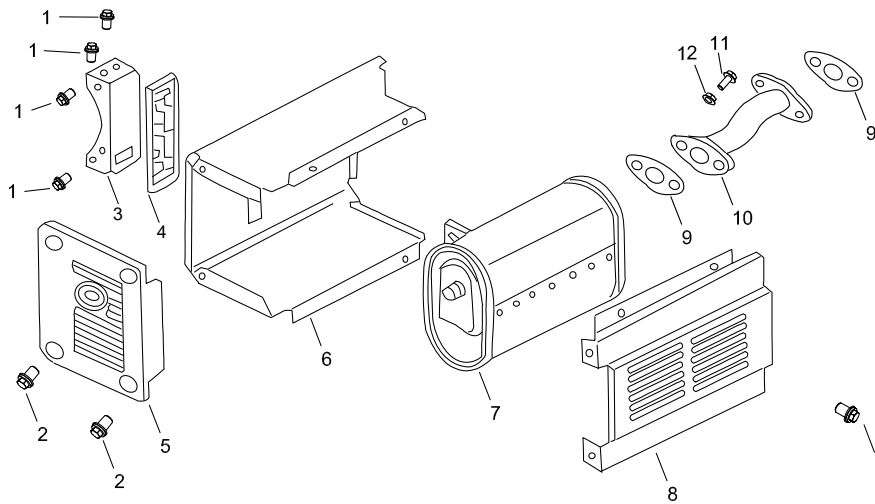


M

APA Part No.	JD Part No.	Description	Qty
APGG10000-M-01-JD	JF340.11.4	CONTROL ASSY.	1
APGG10000-M-02-JD	JF340.11.4-1	CONTROL BASE COMP.	1
APGG10000-M-03-JD	JF340.11.4-3	CONTROL ADJUSTING SPRING	1
APGG10000-M-04-JD	JF340.11.4-4	PAN SCREW (M5 X 34)	1
APGG10000-M-05-JD	20.4-M6*12	FLANGE BOLT (M6 X 12)	1
APGG10000-M-06-JD	JF340.11.2-5A	THROTTLE RETURN SPRING	1
APGG10000-M-07-JD	JF340.11.2-6	GOVERNOR SPRING	1
APGG10000-M-08-JD	JF340.11.2-7	GOVERNOR ROD	1
APGG10000-M-09-JD	20.6-M6	FLANGE NUT (M6)	1
APGG10000-M-10-JD	JF168.11.2-3	GOVERNOR ARM BOLT (M6)	1
APGG10000-M-11-JD	JF340.11.2-4	CONTROL ARM	1

10000W Dual-Fuel Generator

Muffler Assy.

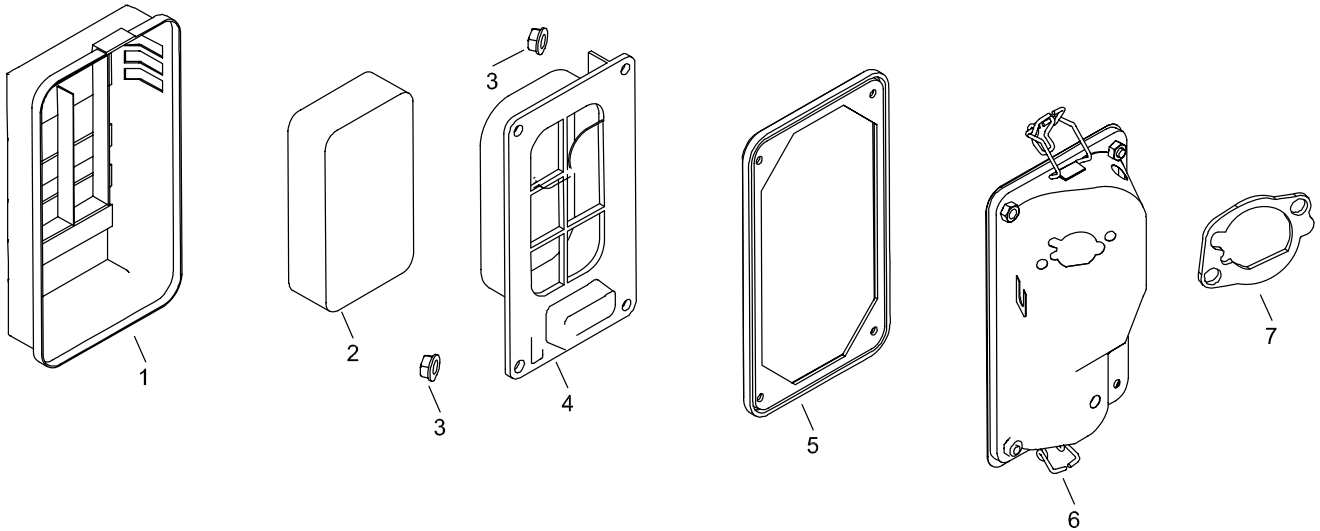


N

APA Part No.	Description	Part No.	
APG10000-N-01-JD	20.4-M8*16	FLANGE BOLT (M8 X 16)	4
APG10000-N-02-JD	20.4-M6*12	FLANGE BOLT (M6 X 12)	4
APG10000-N-03-JD	JD6500.17.10.1.5-1	MUFFLER STAY COMP.	1
APG10000-N-04-JD	JD6500.17.10.1.5-2	MUFFLER PROTECTOR SEAL	1
APG10000-N-05-JD	JD6500.17.10.1.5-3	MUFFLER SIDE PROTECTOR	1
APG10000-N-06-JD	JF340.7.2-3	MUFF. INNER PROTECTOR COM	1
APG10000-N-07-JD	JF340.7.2-1	MUFFLER COMP	1
APG10000-N-08-JD	JF240.7.2-2	MUFF. OUTER PROTECTOR COM	1
APG10000-N-09-JD	JF240.7-1	EX. PIPE GASKET	1
APG10000-N-10-JD	JF290.7.2.1	EX PIPE COMP.	1
APG10000-N-11-JD	20.4-M8*25	FLANGE BOLT (M8 X 25)	2
APG10000-N-12-JD	20.6-M8	FLANGE NUT (M8)	2

10000W Dual-Fuel Generator

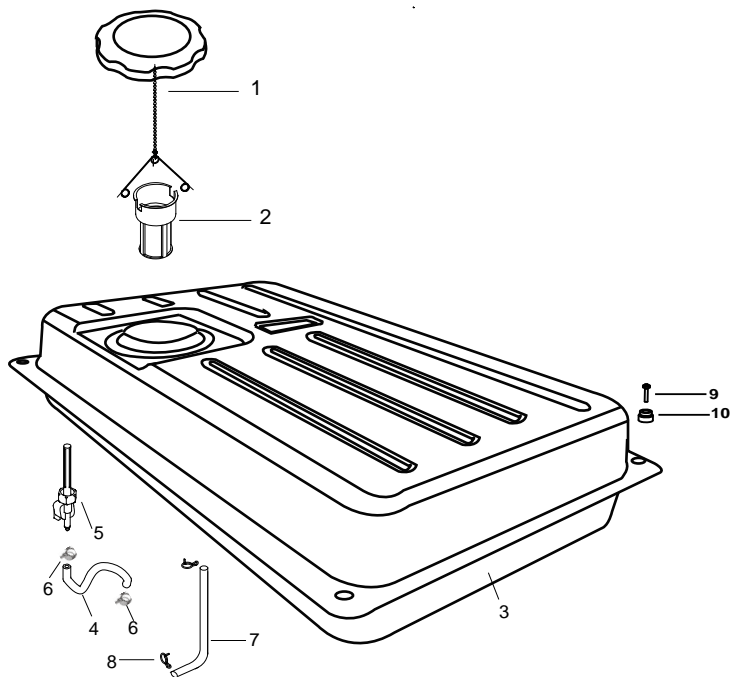
Air Cleaner



APA Part No.	JD Part No.	Description	Qty
APGG10000-O-01-JD	JF240.6.2-1	AIR CLEANER COVER COMP	1
APGG10000-O-02-JD	JF240.6.2-2	AIR CLEANER ELEMENT	1
APGG10000-O-03-JD	20.6-M5	FLANGE NUT (M5)	6
APGG10000-O-04-JD	JF240.6.2-4	AIR CLEANER SEPARATOR	1
APGG10000-O-05-JD	JF240.6.2-3	AIR CLEANER SEAL	1
APGG10000-O-06-JD	JF240.6.2-5	AIR CLEANER CASE COMP	1
APGG10000-O-07-JD	JF240.6.1-6	BREATHER GASKET	1

10000W Dual-Fuel Generator

Fuel Tank Assy.

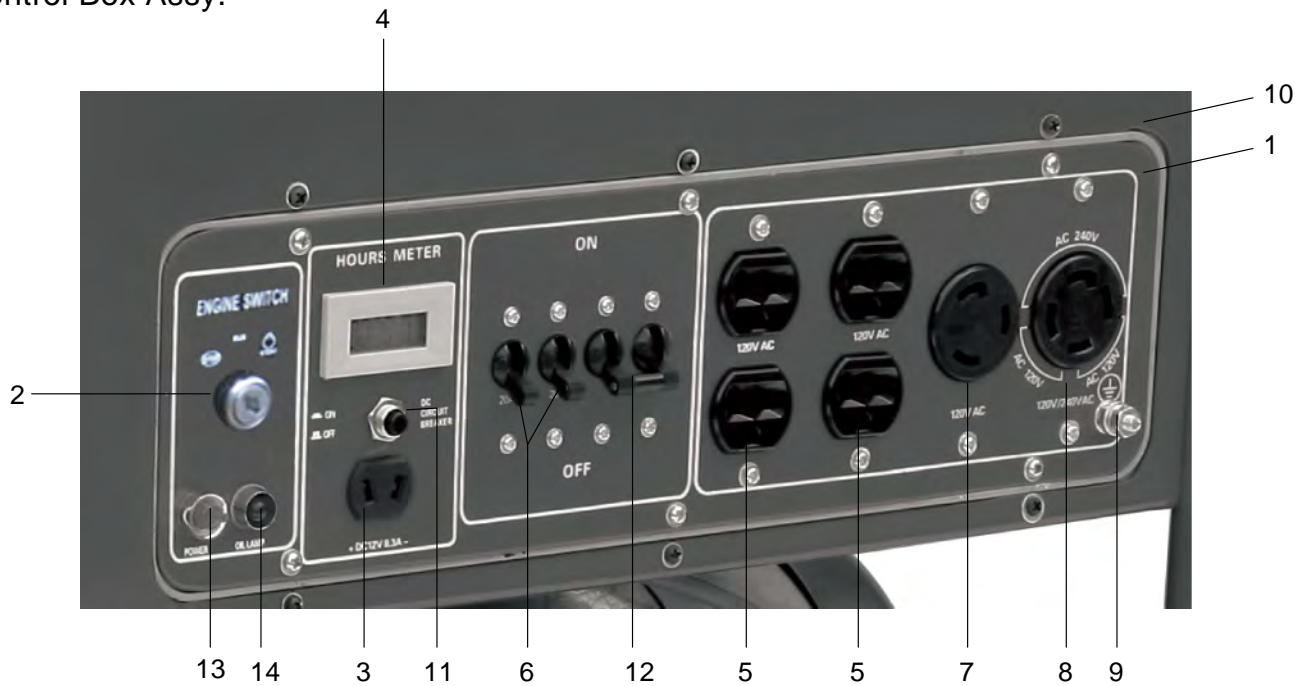


P

APA Part No.	JD Part No	Description	Qty
APGG10000 -P-01-JD	JD6500W-U.1.5-1.2	FUEL TANK CAP COMP.	1
APGG10000 -P-02-JD	JD6500W-U.1.5-1.1	FUEL FILTER	1
APGG10000 -P-03-JD	JD10000W-U.1.5-1C	FUEL TANK COMP.	1
APGG10000 -P-04-JD	JF168.8-1A	FUEL TUBE	1
APGG10000 -P-05-JD	JF168.8-5	FUEL SWITCH	1
APGG10000 -P-06-JD	JF168.8-3	CLAMP, FUEL TUBE	2
APGG10000 -P-07-JD	JF168.8-6	EVAPORATIVE TUBE	1
APGG10000 -P-08-JD	JF168.8-7	SPRING, EVAPORATIVE TUBE	2
APGG10000 -P-09-JD	20.4-M6*25	FLANGE BOLT (M6x25)	4
APGG10000 -P-10-JD	JF168.8.2.1-4	RUBBER	4

10000W Dual-Fuel Generator

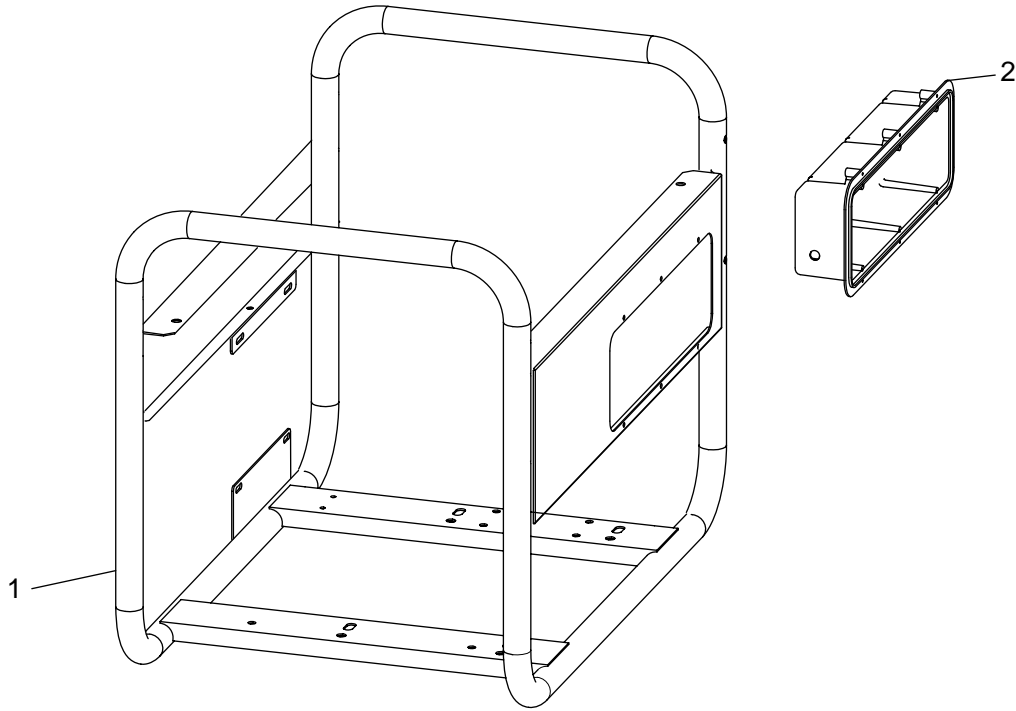
Control Box Assy.



APA Part No.	JD Part No.	Description	QTY
APGG10000 -Q-01-JD	HC001-MB	CONTROL PANEL COMP.	1
APGG10000 -Q-02-JD	21.3.1-13	ENGINE SWITCH ASSY.	1
APGG10000 -Q-03-JD	21.3.4-15	DC 12V OUTPUT	1
APGG10000 -Q-04-JD	21.3.16-2	HOURS METER	1
APGG10000 -Q-05-JD	21.3.4-5	120V RECEPTACLE(Ru-22)	1
APGG10000 -Q-06-JD	21.3.7-7	CIRCUIT BREAKER (SINGLE, 20A)	1
APGG10000 -Q-07-JD	21.3.4-6	120V RECEPTACLE(L5-30)	1
APGG10000 -Q-08-JD	21.3.4-7	120V/240V RECEPTACLE	1
APGG10000 -Q-09-JD	21.3.24	EARTH TERMINAL SET	1
APGG10000 -Q-10-JD	21.3.25-11	CONTROL PANEL CASE	1
APGG10000 -Q-11-JD	21.3.11-4/10A	DC CIRCUIT PROTECTOR(10A)	1
APGG10000 -Q-12-JD	21.3.7-10	CIRCUIT BREAKER (DOUBLE, 30A)	1
APGG10000 -Q-13-JD	21.3.9-6	POWER LAMP	1
APGG10000 -Q-13-JD	21.3.9-3	OIL ALERT LAMP (RED, Φ12)P	1

10000W Dual-Fuel Generator

Frame Comp Assy.

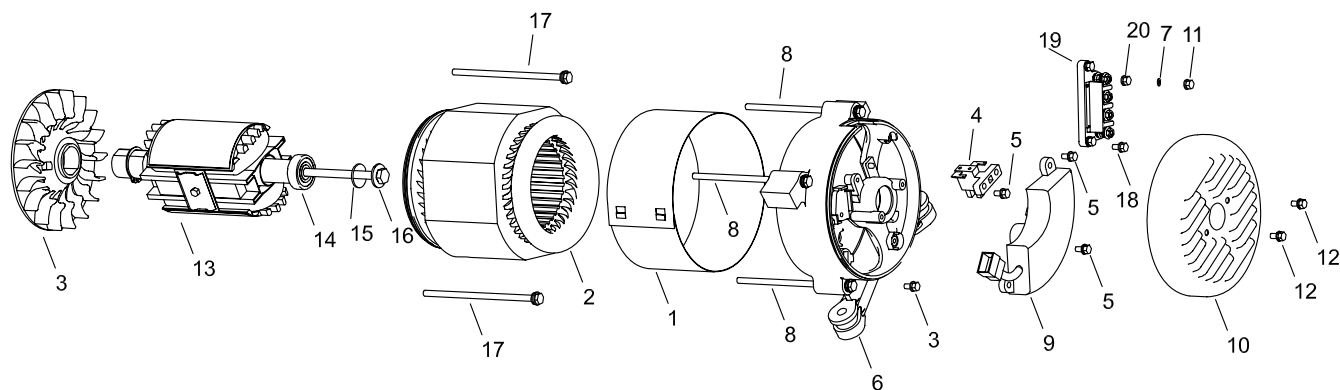


R

APA Part No.	JD Part No.	Description	Qty
APGG10000-R-01-J	JD6500.17.10.1-J109	GENERATOR FRAME	1
APGG10000-R-02-J	21.3.25-11	CONTROL PANEL CASE	1

10000W Dual-Fuel Generator

Generator



S

APA Part No.	JD Part No	Description	Qty.
APGG10000 -S-01-JD	7KW.25.3A	STATOR COVER	1
APGG10000 -S-02-JD	7.5KW.25.02B	STATOR ASSY	1
APGG10000 -S-03-JD	5KW.25.2-8A	COOLING FAN	1
APGG10000 -S-04-JD	5KW.25.4A	BRUSH ASSY	1
APGG10000 -S-05-JD	20.4-M5*16*0.75	TAPPING SCREW	3
APGG10000 -S-06-JD	JF240.22-1	RR HOUSING	1
APGG10000 -S-07-JD	20.9-M5	SPRING WASHER (5mm)	4
APGG10000 -S-08-JD	20.3-M6*187	FLANGE BOLT (M6X 179)	4
APGG10000 -S-09-JD	AVR-7KW	AUTO VOLTAGE REG. ASSY	1
APGG10000 -S-10-JD	JF240.22-3	GENERATOR COVER	1
APGG10000 -S-11-JD	20.9-M5	HEX.NUT (M5)	4
APGG10000 -S-12-JD	20.7-M5*12*0.75	FLANGE BOLT	2
APGG10000 -S-13-JD	7.5kW.25.02C	ROTOR COMP	1
APGG10000 -S-14-JD	20.2-6204RS	BEARING ASSY	1
APGG10000 -S-15-JD	20.9-M10	PLAIN WASHER	1
APGG10000 -S-16-JD	20.4-M10*273*1.25	FLANGE BOLT (M10)	1
APGG10000 -S-17-JD	20.3-M5*222*0.8	FLANGE BOLT (M5)	2

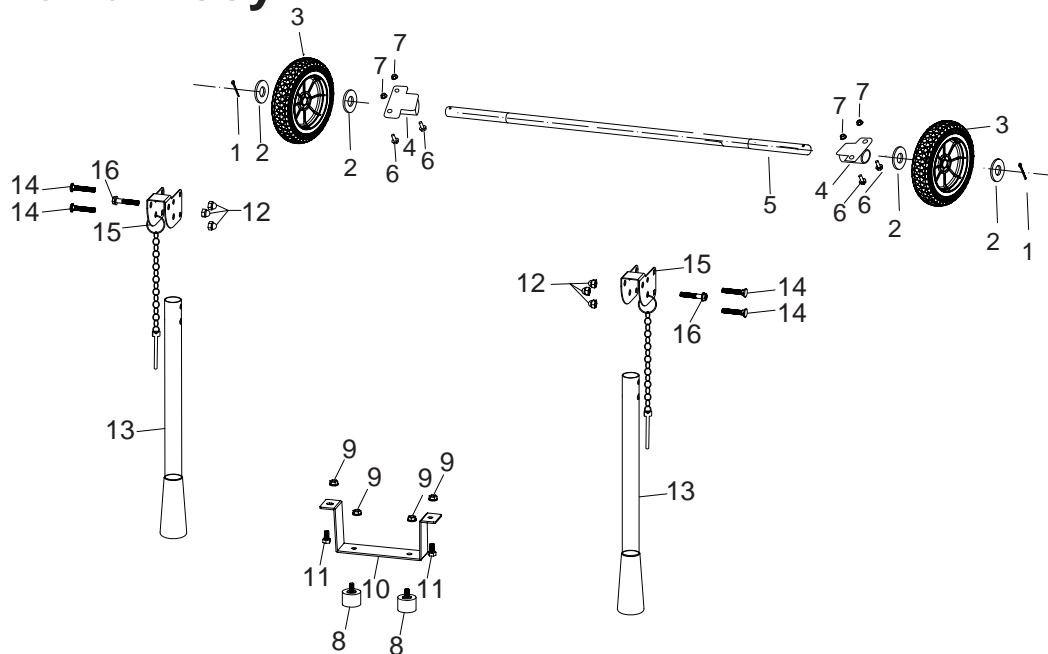
10000W Dual-Fuel Generator

Generator

APA Part No.	JD Part No.	Description	Qty
APGG10000-S-18-JD	20.4-M5*16*0.75	HEX.BOLT (M5 X 20)	2
APGG10000-S-19-JD	2KW.25.5-1	VOLT CHANGE TERMINAL BR-AC-W	1
APGG10000-S-20-JD	20.9-M5	PLAIN WASHER (5mm)	4

10000W Dual-Fuel Generator

Wheel & Hand Assy.



APA Part No	JD Part No	Description	Qty.
APGG10000-T-01-JD	JD6500.17.10.1-1	PIN SPLIT	2
APGG10000-T-02-JD	JD6500.17.10.1-2	WSHER PLAIN	4
APGG10000-T-03-JD	8 inch wheel	WHEEL	2
APGG10000-T-04-JD	JD6500.17.10.1-J109.1-1	BAFFLE	2
APGG10000-T-05-JD	JD6500.17.10.1-J109.1	SHAFT	1
APGG10000-T-06-JD	20.4-M6*45	FLANGE BOLT (M6X 45)	4
APGG10000-T-07-JD	20.6-M6	FLANGE NUT (M6)	4
APGG10000-T-08-JD	JD6500.17-1	RUBBER BOLT	2
APGG10000-T-09-JD	20.6-M8	FLANGE NUT(M8)	6
APGG10000-T-10-JD	JD6500.17.10.1-J109.3	STANDER	1
APGG10000-T-11-JD	20.3-M8*22	FLANGE BOLT (M8X 22)	2
APGG10000-T-12-JD	20.5-M8	FLANGE NUT (M8)	6
APGG10000-T-13-JD	JD6500.17.10.1-J109.2	HANDLE	2
APGG10000-T-14-JD	20.4-M8*48 (square-head)	BOLT (M8X48)	4
APGG10000-T-15-JD	JD6500.17.10.1-J109.2-1	BRACKET WITH LOCK PIN	2
APGG10000-T-16-JD	20.4-M8*45	FLANGE BOLT(M8X45)	2