

Job Name:		Item Number:	
Specifier Name:		Sales Agency:	
Specifier Contact:		Agency Contact:	
Fixture Type:		Comments:	
Quantity:		Approval:	

Lx Double Faced Mounting Tape



L: 300" W: 3/8" H: 1/32"

Description

Double faced tape mounting accessory for 9435, 94035, 9443 and 9874 Lx track. Specially designed high adhesion 3M™ backing.

Specifications

Item Number	9450
Dimensions	L: 300" W: 3/8" H: 1/32"
Safety Listing	cETL Listed for Dry Locations
Warranty	1-Year Warranty

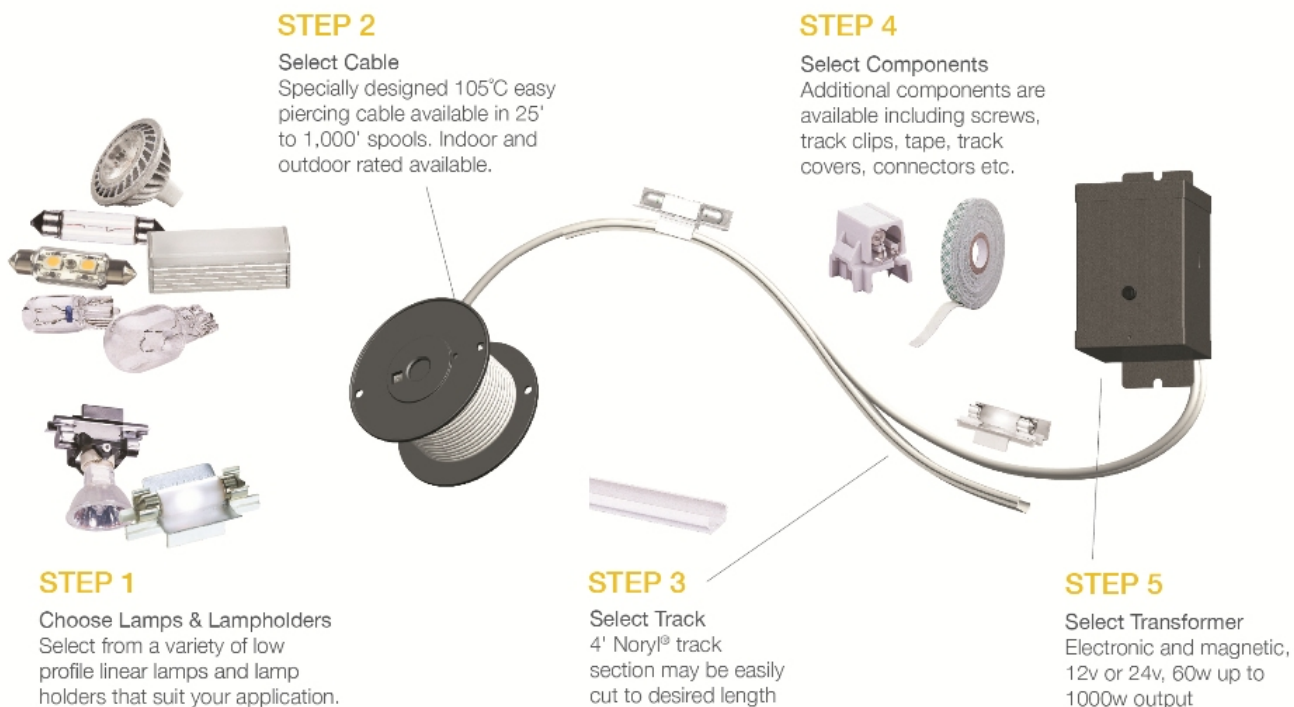
Instruction Sheets

- English (VS-9450)

Shipping Information:

Package Type	Product #	Quantity	UPC	Length	Width	Height	Cube	Weight	UPS Ship
Individual	9450	1	785652945007	7	6	0.1	0.002	0.1	Yes
Master Pack		144	10785652945004	15.5	11	12.75	1.258	11.3	Yes

Component Diagram:



7400 Linder Ave. | Skokie, Illinois 60077 | 800-347-5483
© 2013 Sea Gull Lighting LLC, a Generation Brands Company.