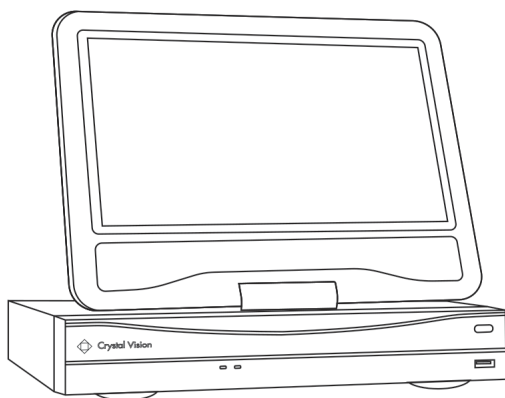


Wireless NVR System

User Manual



CVT9604E • CVT9608E • CVT804A • CVT808A

Thank you for purchasing our product. Crystal Vision Technology is committed to providing our customers with a high quality, reliable security solution.

This manual refers to the following models:

CVT9604E / CVT9608E / CVT804A / CVT808A

For the latest online manual, downloads and product updates, and to learn about our complete line of accessory products, please visit our website at: www.cvtus.com



WARNING

RISK OF ELECTRIC SHOCK DO NOT OPEN



WARNING: To reduce the risk of electric shock do not remove cover, no user serviceable parts inside.

Refer servicing to qualified service personnel.



The lightning flash with arrowhead symbol, within an equilateral triangle, is intended to alert the user to the presence of uninsulated 'dangerous voltage' within the product's enclosure that may be of sufficient magnitude to constitute a risk of electric shock.



The exclamation point within an equilateral triangle is intended to alert the user to the presence of important operating and maintenance (servicing) instructions in the literature accompanying the appliance.

WARNING: To prevent fire or shock hazard, do not expose the NVR system & power adapters to rain or moisture.

CAUTION: To prevent electric shock, match wide blade of the plug to the wide slot and fully insert.

Important Safeguards

In addition to the careful attention devoted to quality standards in the manufacturing process of your product, safety is a major factor in the design of every instrument. However, safety is your responsibility too. This sheet lists important information that will help to ensure

your enjoyment and proper use of the product and accessory equipment. Please read them carefully before operating and using your product.

General Precautions

1. All warnings and instructions in this manual should be followed.
2. Remove the plug from the outlet before cleaning. Do not use liquid aerosol detergents. Use a water-dampened cloth for cleaning.
3. Do not use this product in humid or wet places.
4. Keep enough space around the product for ventilation. Slots and openings in the storage cabinet should not be blocked.
5. It is highly recommended to connect the product to a surge protector to protect from damage caused by electrical surges. It is also recommended to connect the product to an uninterruptible power supply (UPS), which has an internal battery that will keep the product running in the event of a power outage.

Installation

1. **Read and Follow Instructions:** All the safety and operating instructions should be read before the product is operated. Follow all operating instructions.
2. **Retain Instructions:** The safety and operating instructions should be retained for future reference.
3. **Heed Warnings:** Comply with all warnings on the product and in the operating instructions.
4. **Polarization:** Do not defeat the safety purpose of the polarized or grounding-type plug. A polarized plug has two blades with one wider than the other. A grounding type plug has two blades and a third grounding prong. The wide blade or the third prong are provided for your safety. If the provided plug does not fit into your outlet, consult an electrician for replacement of the obsolete outlet.
5. **Power Sources:** This product should be operated only from the type of power source indicated on the marking label. If you are not sure of the type of power supplied to your location, consult your video dealer or local power company. For products intended to operate from battery power, or other sources, refer to the operating instructions.
6. **Overloading:** Do not overload wall outlets or extension cords as this can result in the risk of fire or electric shock. Overloaded AC outlets, extension cords, frayed power cords, damaged or cracked wire insulation, and broken plugs are dangerous. They may result in a shock or fire hazard. Periodically examine the cord, and if its appearance indicates damage or deteriorated insulation, have it replaced by your service technician.
7. **Power-Cord Protection:** Power supply cords should be routed so that they are not likely to be walked on or pinched by items placed upon or against them. Pay particular attention to cords at plugs, convenience receptacles, and the point where they exit from

the product.

8. **Surge Protectors:** It is highly recommended that the product be connected to a surge protector. Doing so will protect the product from damage caused by power surges. Surge protectors should bear the UL listing mark or CSA certification mark.
9. **Uninterruptible Power Supplies (UPS):** Because this product is designed for continuous, 24/7 operation, it is recommended that you connect the product to an uninterruptible power supply. An uninterruptible power supply has an internal battery that will keep the product running in the event of a power outage. Uninterruptible power supplies should bear the UL listing mark or CSA certification mark.
10. **Ventilation:** Slots and openings in the case are provided for ventilation to ensure reliable operation of the product and to protect it from overheating. These openings must not be blocked or covered. The openings should never be blocked by placing the product on a bed, sofa, rug, or other similar surface. This product should never be placed near or over a radiator or heat register. This product should not be placed in a built-in installation such as a bookcase or rack unless proper ventilation is provided and the product manufacturer's instructions have been followed.
11. **Attachments:** Do not use attachments unless recommended by the product manufacturer as they may cause a hazard.
12. **Water and Moisture:** Do not use this product near water — for example, near a bath tub, wash bowl, kitchen sink or laundry tub, in a wet basement, near a swimming pool and the like.
13. **Heat:** The product should be situated away from heat sources such as radiators, heat registers, stoves, or other products (including amplifiers) that produce heat.
14. **Accessories:** Do not place this product on an unstable cart, stand, tripod, or table. The product may fall, causing serious damage to the product. Use this product only with a cart, stand, tripod, bracket, or table recommended by the manufacturer or sold with the product. Any mounting of the product should follow the manufacturer's instructions and use a mounting accessory recommended by the manufacturer.
15. **Camera Extension Cables:** Check the rating of your extension cable(s) to verify compliance with your local authority regulations prior to installation.
16. **Mounting:** The cameras provided with this system should be mounted only as instructed in this guide or the instructions that came with your cameras, using the provided mounting brackets.
17. **Camera Installation:** Cameras are not intended for submersion in water. Not all cameras can be installed outdoors. Check your camera environmental rating to confirm if they can be installed outdoors. When installing cameras outdoors, installation in a sheltered area is required.

Service

1. **Servicing:** Do not attempt to service this product yourself, as opening or removing covers may expose you to dangerous voltage or other hazards. Refer all servicing to qualified

service personnel.

2. **Conditions Requiring Service:** Unplug this product from the wall outlet and refer servicing to qualified service personnel under the following conditions:
 - When the power supply cord or plug is damaged.
 - If liquid has been spilled or objects have fallen into the product.
 - If the product has been exposed to rain or water.
 - If the product has been dropped or the cabinet has been damaged
 - If the product does not operate normally by following the operating instructions. Adjust only those controls that are covered by the operating instructions. Improper adjustment of other controls may result in damage and will often require extensive work by a qualified technician to restore the product to its normal operation.
 - When the product exhibits a distinct change in performance. This indicates a need for service.
3. **Replacement Parts:** When replacement parts are required, have the service technician verify that the replacements used have the same safety characteristics as the original parts. Use of replacements specified by the product manufacturer can prevent fire, electric shock, or other hazards.
4. **Safety Check:** Upon completion of any service or repairs to this product, ask the service technician to perform safety checks recommended by the manufacturer to determine that the product is in safe operating condition.

Use

1. **Cleaning:** Unplug the product from the wall outlet before cleaning. Do not use liquid cleaners or aerosol cleaners. Use a damp cloth for cleaning.
2. **Product and Cart Combination:** When product is installed on a cart, product and cart combination should be moved with care. Quick stops, excessive force, and uneven surfaces may cause the product and cart combination to overturn.
3. **Object and Liquid Entry:** Never push objects of any kind into this product through openings as they may touch dangerous voltage points or 'short-out' parts that could result in a fire or electric shock. Never spill liquid of any kind on the product.
4. **Lightning:** For added protection of this product during a lightning storm, or when it is left unattended and unused for long periods of time, unplug it from the wall outlet and disconnect the antenna or cable system. This will prevent damage to the product due to lightning and power line surges.

Preface

Thank you for purchasing Crystal Vision products. This user manual is to introduce the operations of Crystal Vision wireless HD systems in more details. If there is any other question which is not covered in this user manual, please contact Crystal Vision support at: support@cvtus.com

Statement

Though we apply all efforts to make the manual complete and accurate, there could still be some discrepancies due to products' timely update.

The products and manual are subject to change without previous notification.

The content in this manual is only for users' reference. We don't promise it's exactly the same with the products you purchase. Detailed information is in accordance with the final products.

The accessories and parts mentioned in this manual are only for product using guide purpose and not necessarily to be included in your purchased item.

Special Statement

Please comply with local laws and regulations when you use the surveillance devices.

About default settings

The default username for NVR is admin (administrator ID)

The default password for account admin is 'blank', means no password.

The default setting of NVR is to overwrite oldest recorded videos when hard drive is full.

The device will start Setup Wizard by default when NVR is powered on.

Table of contents

Preface	5
1. Product Overview	
1.1 Product Introduction	9
1.2 Product Specifications	9
1.3 Product Key Features	13
2. Operation Instructions	
2.1 NVR Front / Rear Panel	13
2.2 Monitor Display	14
2.3 Mouse Operation	14
2.4 Frequently Used Button	14
3. Installation & Connection	
3.1 Installation Precautions	15
3.2 Preparations before Installation	15
3.3 Camera Mounting Spots	16
3.4 Antenna mounting Tips	16
4. System Operation	
4.1 Starting up	16
4.2 Setup Guide	17
5. System Main Menu	
5.1 Split screen	19
5.2 Video Manage	19
5.2.1 Refresh	19
5.2.2 Match Code	19
5.2.3 Wifi Add	21
5.2.4 Auto Add	22
5.2.5 Modify	23
5.2.6 Advanced	23
5.2.7 Delete / Delete All	23
5.2.8 Manual Edit	24

5.2.9 Channel	24
5.2.10 Wi-Fi Setup	24
5.2.11 Repeater	24
5.3 System Setup	
5.3.1 General	
5.3.1.1 General	26
5.3.1.2 Time	27
5.3.1.3 Hard Drive	27
5.3.1.4 Screen	28
5.3.1.5 Error	29
5.3.2 Record	
5.3.2.1 Record.....	29
5.3.3 Network	
5.3.3.1 Network.....	30
5.3.3.2 DDNS	31
5.3.3.3 E-mail	32
5.3.3.4 Wi-Fi Setup	33
5.3.4 Channel	
5.3.4.1 Channel info	34
5.3.4.2 PTZ	34
5.3.4.3 Channel OSD	35
5.3.4.4 Motion Detection	35
5.3.4.5 Bitrate.....	36
5.3.5 System	
5.3.5.1 System info	37
5.3.5.2 System Log	37
5.3.5.3 User.....	38
5.3.5.4 System Upgrade	39
5.3.5.5 Camera Upgrade.....	40
5.3.5.6 Default Setting.....	41
5.3.5.7 System Maintenance.....	42
5.4 Video Playback	43
5.5 Video Backup.....	44
5.6 Color Adjust	45
5.7 PTZ Control.....	45

5.8 Manual Recording	46
5.9 Setup Wizard	46
5.10 Fast Network	46
5.11 Exit System.....	47
5.11.1 Log Out	47
5.11.2 System Reboot	47
5.11.3 Close Screen Display.....	48
5.11.4 System Shutdown	48
6. Remote View	
6.1 Smartphone Setup (Android / iOS).....	49
6.2 CMS Software for Windows & MAC	51

1. Product Overview

1.1 Product Introduction

The Crystal Vision wireless HD NVR system is our new generation of NVR. It supports wireless Wi-Fi network video input, real time live view, video playback, and video backup. The NVR system can be widely used for surveillance of home, business, office, villa, etc.

1.2 Product Specification

NVR: CVT9604E / CVT9608E

Operation System	Embedded Linux OS	
NVR Channel	4 Channel / 8 Channel	
Video Output	HDMI Output	1024x768, 1366x768, 1440x900, 1920x1080p
Video Resolution	720P (H.264)	
Frame Per Second	25 fps Live View / 15 fps Recording	
Synch-Playback	4 Channel	
Video Control	Video / Capture mode	Manual / Time / Motion
	Playback mode	Real time / Manual / Motion
	Backup	USB Backup
Hard Drive	Interface	1x SATA
	Max Capacity	4 TB Hard Drive
External Interface	Network Interface	RJ45 10M/100M (LAN)
	USB interface	USB 2.0 1x Front, 1x Back
Network Control	Protocol	UPnP (Plug & Play), SMTP (Email Notification), PPPoE (dial-up), DHCP (Automatically Obtain an IP Address), ETC...
Power	DC 12V 3A	
Consumption (without HDD)	<5 W	
Working Temperature	-10c ~ 55c	
Working Humidity	10% ~ 90%	
Size	280 x 270 x 65 mm	
Weight (without HDD)	3.2lb	

Camera: CVT3010W

Mega Pixel	1.3MP
Operation System	Embedded Linux
Image Sensor	1/4" Progressive Scan Sensor
S/N Ratio	> 39.1dB
Resolution	1280 x 720 (16:9) High Definition
Minimum Illumination	Color: 0.1 Lux, B/W: 0.1 Lux
OSD	Date, Time, Title
White Balance	Auto
Day & Night	Auto / Color / BW
3D-DNR	Auto
Mirror / Flip	On / Off
Remote Stream	Dual Stream Mode HD: 1280 x 720 SD: 640 x 480
Anti-thunder Level	Standard IEC61000-4-5
Power	DC12V 1A
Consumption	<6W
Interface	Connect / Rest Button, DC Power Input Port
Working Temperature / Humidity	-10c ~ 50c / 30% ~ 80% RH
Storage Temperature / Humidity	-20c ~ 60c / 20% ~ 90% RH
Size	180 x 65 x 65 mm
Weight	500g

NVR: CVT804A / CVT808A

Operation System	Embedded Linux OS	
NVR Channel	4 Channel / 8 Channel	
Video Output	HDMI Output	1024x768, 1366x768, 1440x900,
Video Resolution	720P / 1080P (H.264, H.265, H.265+)	
Frame Per Second	25 fps Live View / 15 fps Recording	
Synch-Playback	4 Channel	
Video Control	Video / Capture mode	Manual / Time / Motion
	Playback mode	Real time / Manual / Motion
	Backup	USB Backup
Hard Drive	Interface	1x SATA
	Max Capacity	4 TB Hard Drive
External Interface	Network Interface	RJ45 10M/100M (LAN)
	USB interface	USB 2.0 1x Front, 1x Back
Network Control	Protocol	UPnP (Plug & Play), SMTP (Email Notification), PPPoE (dial-up), DHCP (Automatically Obtain)
Power	DC 12V 3A	
Consumption (without HDD)	<5 W	
Working Temperature	-10c ~ 55c	
Working Humidity	10% ~ 90%	
Size	280 x 270 x 65 mm	
Weight (without HDD)	3.2lb	

Camera: CVT20WB

Mega Pixel	2.0 MP
Operation System	Embedded Linux
Image Sensor	1/3" Progressive Scan Sensor
S/N Ratio	> 39.1dB
Resolution	1920 x 1080 (16:9) High Definition
Minimum Illumination	Color: 0.1 Lux, B/W: 0.1 Lux
OSD	Date, Time, Title
White Balance	Auto
Day & Night	Auto / Color / BW
3D-DNR	Auto
Mirror / Flip	On / Off
Remote Stream	Dual Stream Mode HD: 1920 x 1080 SD: 640 x 480
Anti-thunder Level	Standard IEC61000-4-5
Power	DC12V 1A
Consumption	<6W
Interface	Connect / Rest Button, DC Power Input Port
Working Temperature / Humidity	-10c ~ 50c / 30% ~ 80% RH
Storage Temperature / Humidity	-20c ~ 60c / 20% ~ 90% RH
Size	180 x 65 x 65 mm
Weight	500g

1.3 Product Key Features

- HD wireless network video recorder
- Built-in high-performance high-stability Wi-Fi router module; NVRs support 802.11b/g/n protocol
- Add Wi-Fi IP network camera to NVR by auto add
- Video live view/ record/ playback/ backup
- Easy usability (wireless auto pair, setup wizard, frequently used function menu, plug and play)
- Support IP Cameras with ONVIF & N1 protocol
- Network services supported: P2P, DHCP, DDNS, PPPoE, E-Mail, etc.
- Multiple alarm trigger (video loss/ motion detection) and alarm output (buzzer/E-Mail/ etc.)
- Support access and control from Android/ Apple phones (or tablets)
- Support access and control from PC via PC client software.
- Support IP camera settings (codec, image adjustment, OSD display etc.)
- Support motion detection with IPC
- Support user authority management

2. Operation Instructions

2.1 NVR Front / Rear Panel



1. 10.1' Built-in Screen
2. Monitor On / Off Button
3. USB Ports
4. Power / Hard Drive Indication LED







5. HDMI Output Port
6. LAN Port
7. Power Input
8. System Wi-Fi Antenna

2.2 Monitor Display

1. Camera Title
2. Camera Time Stamp
3. Wi-Fi / Recording Mode
4. System Time
5. Cloud ID / System Internet Connection Status



	Camera wireless signal indication
	Motion record
	Time record
	Manual record

2.3. Mouse Operation

The NVR is designed for mouse navigation. To use a USB Mouse (included), connect the mouse to a USB port on the NVR.

Left Click	A. Click to select a menu option
Right Click	A. Enter Main Menu
	B. Exit / Cancel
Middle scroll	A. Change drop down menu content
	B. Switch between channels under single view mode

2.4 Frequently used Button

Apply	Save and continue
OK	Save and exit
Cancel	Cancel / Close the operation
Copy to	Copy the settings of current channel to other channels

3. Installation & Connection

3.1 Installation Precautions

Please refer to below tips while install and use the device:

1. To extend the life of the NVR system (main unit), please keep the NVR system away from water, high temperature, and dust. Use it in a well-ventilated place.
2. Please use SATA hard drive, USB devices and mouse purchased from authentic channels.
3. Before use, please ensure the NVR has correct ground connection. Power source should not exceed the indicated normal working voltage range in the specs sheet.

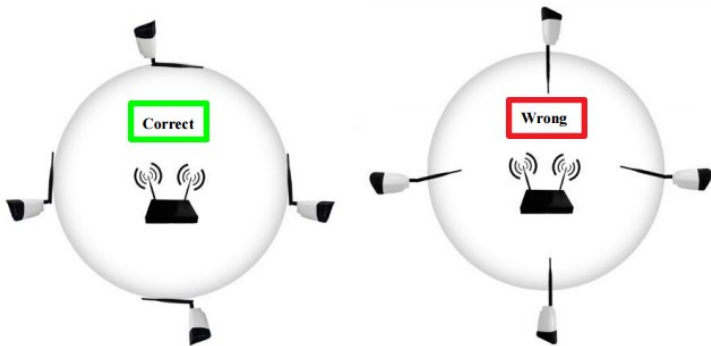
3.2 Preparations before Installation

- Decide the location of NVR. It is suggested to place the NVR at the center of monitoring area. Avoid any avoidable obstacle between the cameras and the NVR.
- Open area with no walls, cameras can be mounted about approx. 350ft away from the NVR.
- When there is one wall in between, reduce the distance to approx. 175ft
- When there are 2 walls in between, reduce the distance to approx. 85ft
- When there are more than 2 walls between camera and NVR, we suggest using extendable antennas to bring camera's antenna inside walls while leaving camera out; or use network cable to hard wire the camera to NVR. (optional)
- The Wi-Fi range mentioned above may vary depends on the environments; range data only for reference.
- Test the system before installation.
- Screw on antennas for NVR and plug it to power with included **12V 3A** power adapter.
- Screw on antennas for cameras and plug cameras to power with included **12V 1A** power adapters.
- If you see videos from all cameras on monitor within minute or two, you can now mount the cameras to location you want.
- If the camera does not connect within minute or two, please follow step **5.2.2** to add the camera to system or contact Crystal Vision Support at: support@cvtul.com.

3.3 Camera Mounting Spots

1. Mount the cameras anywhere within the Wi-Fi range, plug them to power with included power adapters (smaller 12v 1amp power adapter).
2. The cameras should start to stream videos to NVR within 1 ~ 2 minute.
3. If it does not display video on the NVR's screen, the distance to the camera might be too far and the camera should be moved closer to the NVR system.

3.5 Antenna Mounting Tips



The NVR's antennas radiate signals to all around. The signal pick-up is best while antennas are on same height and parallel. If the cameras cannot be at the same height with NVR, please keep their antennas parallel (up or down).

4. System Operation Introduction

4.1 Starting up

Note:

- *Please check the output voltage of the power adapter to make sure it is correct.*
- *Unstable power source may cause unstable working status or even damage to the NVR system. If you have unstable power source in your area, please use voltage-stabilized power source.*

Starting up the system:

1. Plug NVR to power, the power indicator on NVR front panel should light up and you'll hear a beep.
2. If monitor is getting video output from NVR, you should see the starting page as shown in Image below. If you cannot see anything on the display please contact us at: [**support@cvtus.com**](mailto:support@cvtus.com)

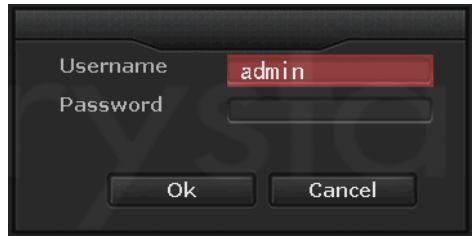


Login

After system initialized, the system will ask you to login to the system. Users must login to do further operations.

Operation Steps:

1. Type in username. **Default Username is admin.**
2. Type in password. **Default Password is empty, means no password**, leave it blank.
3. Click 'OK', you shall be logged in to the system.



*Tip: The password can be combination of numbers, letters or *#. The password length must be characters long.*

4.2 Setup Guide

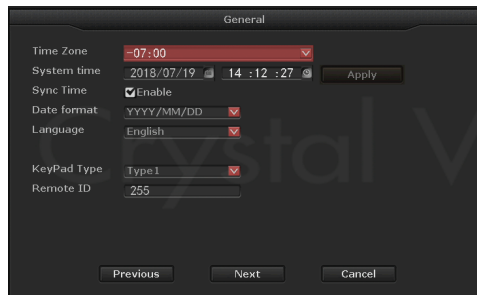
When you have login to the system for the first time, you will automatically enter Setup Guide. The setup guide will guide you through the basic settings. You may also click 'Cancel' > 'Yes' to skip the settings.

Operation Steps:

If you don't want to go through the settings again on every startup, please uncheck the 'Enable Boot Wizard'.



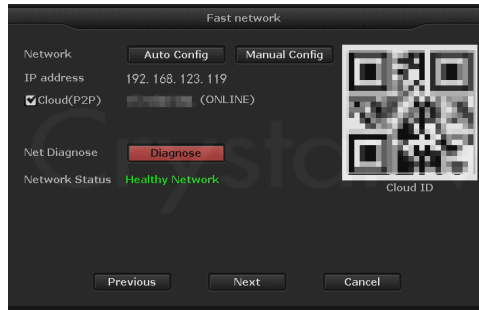
General: Allows you to set your NVR's time zone, date and time, language, and keypad type. Click 'Next' to continue after finish your settings.



Network :

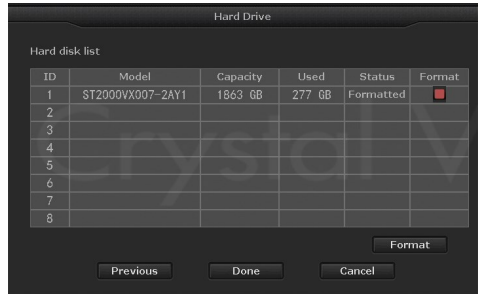
Allows users to connect the NVR to Internet for remote access.

Users can either check DHCP to allow NVR obtain IP address from router automatically, or manually set the NVR's IP Address, Gateway, Subnet Mask, etc.



Check DHCP, your NVR will obtain IP address from router automatically.

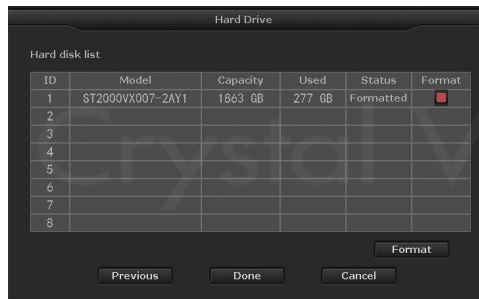
Uncheck DHCP, you can also manually assign an IP address for your NVR by clicking 'Manual Config'.



Hard Drive :

It displays list of current hard drives, including the hard drive model, capacity, used, status and format status. As default the hard drive should be formatted. If the hard drive hasn't been formatted yet please select the hard drive (check box on the right) and click 'Format'. This will take few minute to format the hard drive.

When the hard drive is successfully formatted, the status will show 'formatted' You can now click 'Done' to finish your setting



Note:

- You will lose all the recording on the hard drive once you format the hard drive, so please backup the recordings before you format the hard drive.
- If you do not see any hard drive listed under the 'Hard Drive' please contact us at: support@cvtus.com.

5. System Main Menu

5.1 Split Screen

Select between '1x view' (view a channel in full screen) / '4x view' / '6x view' / '8x view' '9x view' (6 / 8 / 9 split screen is only available in 8 channel system).

Tip: You can also double left click on the mouse to simply change between the single and multi channel view. From single channel view you can also use the mouse scroll to change between the channels.

5.2 Video Manage

Interface that manage camera connections. You can add new cameras to the NVR, and delete camera from the current NVR system and re-pair to resolve any connection issue.

5.2.1 Refresh

Check for any available cameras within the network.

5.2.2 Match Code

Pairing the camera to the NVR and configure the cameras to work wirelessly.

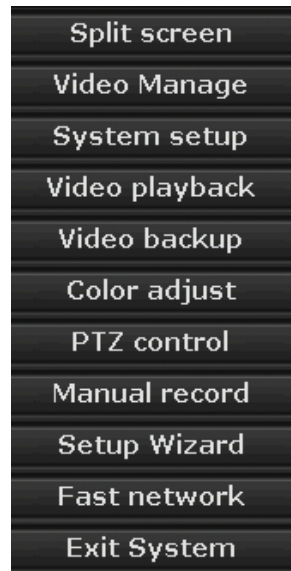
The main function of 'Match Code' is to pair the IP cameras to NVR, and transfer the NVR's Wi-Fi information (SSID & Password) to the IP cameras. Once the information has been transfer to the IP camera, it will be added to the NVR's network with an IP address starting with 172. When it is done the camera will be added to the system and will automatically connect to the NVR system.

When to use Match Code:

Adding new camera to your Crystal Vision NVR system or re-pair camera to NVR when the camera lost connection to the system.

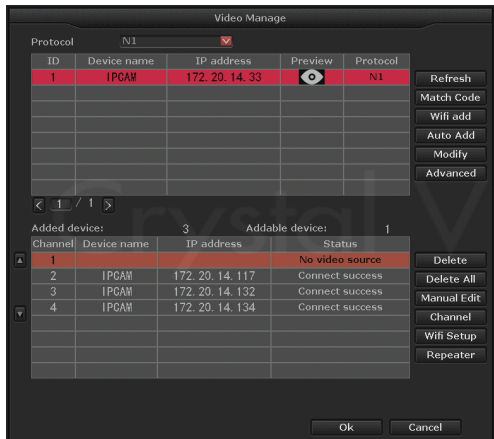
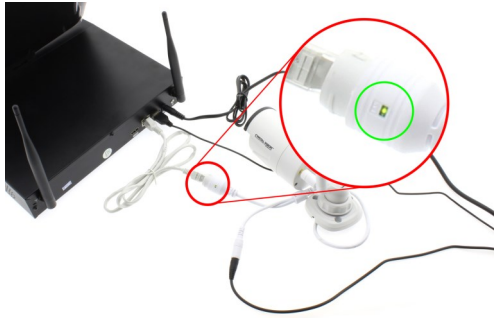
Note:

- IP cameras in pre-packed kits have already been paired to NVR. So cameras will auto connect to NVR once the cameras are powered on using the provided power adapters.



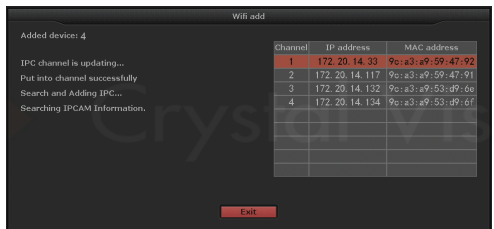
How to pair (sync) camera using match code:

1. Connect the camera to your NVR via Ethernet cable, and power on both of the NVR system & the camera. The Ethernet port at the end of camera will blink, as shown in image below.
2. Right click your mouse to bring up the main menu, then click '**Video Manage**'. From the video manage click '**Refresh**' on upper right and wait about 20~30 second, and you'll see the camera displays in upper chart.
3. Once you see the camera listed on the top chart, click on the '**Match Code**' to start pairing the camera to the system.
4. When the system is done adding the camera, click on the '**Exit**' to stop the pairing process.
5. Once you are done the camera you have added should be listed at the bottom chart indicating the camera has been sync to the system.
6. When you are done click '**OK**' to save & exit the video manage, and unplug the Ethernet cable from the camera.



Note:

- **Connection Success:** Camera is paired to NVR system successfully. You should be able to see the camera feedback on the monitor.
- **NO Video Source:** Available camera slot where you can add new or re-pair existing camera.
- **IPC Disconnect:** Camera is paired to the NVR system, but not yet connected (Ex. Camera is out of range or not yet powered on).
- Camera needs to be in the NVR's Wi-Fi range.



5.2.3 WiFi Add

Pairing the camera to the NVR and configure the cameras to work wirelessly.

The main function of 'WiFi Add' is to pair the IP cameras to NVR, and transfer the NVR's Wi-Fi information (SSID & Password) to the IP cameras. Once the information has been transfer to the IP camera, it will be added to the NVR's network with an IP address starting with 172. When it is done the camera will be added to the system and will automatically connect to the NVR system.

When to use Match Code:

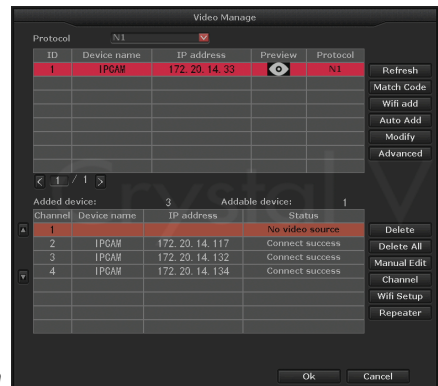
Adding new camera to your Crystal Vision NVR system or re-pair camera to NVR when the camera lost connection to the system.

Note:

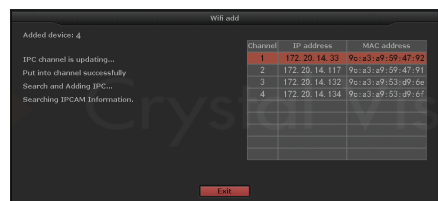
- IP cameras in pre-packed kits have already been paired to NVR. So cameras will auto connect to NVR once the cameras are powered on using the provided power adapters.

How to pair (sync) camera using WiFi add:

1. Power on the system and the camera using the provided power adapter.
2. From the system, please go to 'Video manage' and click 'WiFi Add'.
3. Once you see the WiFi add screen display, press & hold the 'Sync' button for 5 second to enter the wireless sync mode.
4. Please allow 30~60 second for the system to search and add the camera into the system.
5. When the system is done adding the camera, click on the 'Exit' to stop the pairing process.
6. Once you are done the camera you have added should be listed at the bottom chart indicating the camera has been sync to the system.
7. Click 'OK' to save & exit the system and you are done.



Tip: If you have an issue syncing the camera to the system, please press & hold the 'Sync' button for 10 second to reset and try again. The reset process may take up to 1~2 min.



5.2.4 Auto Add

Function: Adding all of the cameras back into the system in case the camera has been deleted from the system, or after the NVR firmware update.

Auto Add is different from the Match Code. This function help you add the camera to the system by reconfiguring the IP address, however, it does not change the connection type such as wire or wireless.

When to use Auto Add:

- When the camera is out of the Wi-Fi range and want to connect the camera via hard wire connection.
- After NVR system firmware upgrade.

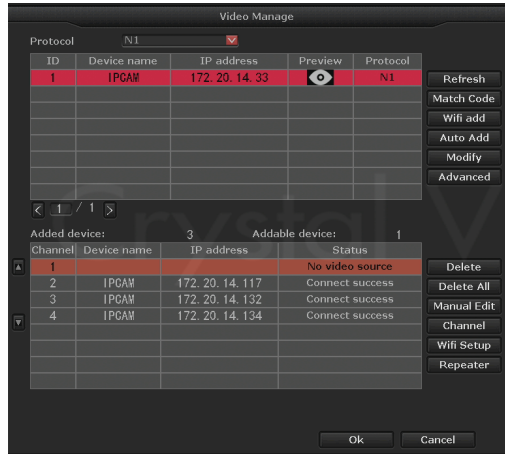
Operation Steps

Configure the camera to work as wired connection:

1. Right click to bring up the main menu, and click '**Video Manage**'.
2. From the bottom chart select and delete the channel you will like to use it as wire connection
3. Connect the NVR system to the router, and connect the camera to the same router (network) as the NVR system using the Ethernet cable and click '**Refresh**'.
4. Once you see the camera at the top chart with the internal IP address (ex. 192.168.xxx.xxx) click '**Auto Add**' > '**Yes**' > '**Yes**' to reconfigure the IP address and add it to the system.

Re-adding all the cameras after NVR firmware upgrade:

1. Right click to bring up the main menu, and click '**Video Manage**'
2. From the '**Video manage**' you will be able to see all of the cameras listed at the top chart. If you do not see all the cameras listed please click '**Refresh**'.
3. With all the cameras showing click '**Auto add**' > '**Yes**' > '**No**' to add the camera back into the system without reconfiguring the IP address.



5.2.4 Modify

Function: Modify Camera information (Camera IP Address, Username & Password, etc..)

Operation Steps:

1. Right click to bring up the main menu, and click '**Video Manage**'
2. Select the camera from top chart you will like to edit and click '**Modify**'
3. You can edit the camera information within this option. When you are done click '**OK**' to save & exit.

Modify IPC Connection Parameters

IP Cam model	N1	Wireless
IP address	172.20.14.150	
Subnet mask	255.255.0.0	
MAC address	9CA3-A955-F83F	
Port	80	
Version	2.4.27.391809 (2.4.1.0)	
Username	admin	
Password		

Ok Cancel

5.2.5 Advanced

Function: Supports multiple network segment search, allows for repeated & intelligent add.

- **Multiple Network Segment:** Allow system to search wireless IP cameras in different segment as NVR system.
- **Repeated add:** Allow system to add same camera to multiple channels.
- **Intelligent add:** Allow system to assign a new valid IP address to the camera to resolve IP address errors. (Such as IP conflicts, IP address is not in the same segment)

5.2.6 Delete / Delete All

Function: Delete camera from the current channel of the NVR system.

Delete: Allows you to delete one channel at a time

Delete All: Allows you to delete all the channel at once.

Operation Steps:

1. Right click to bring up the main menu and click '**Video Manage**'
2. Select the channel you will like to remove and click '**delete**'. Deleted camera will be move to the top chart, and you will not be able to see the video feed from this camera. The channel you have deleted will be empty with status display '**No Video Source**'.

Tip: You can delete camera and re-add them to rearrange the order of the cameras.

5.2.7 Manual Edit

Function: Edit Channel information such as: enable / disable channel, Protocols, IP address, port number, username & password, stream type, and image orientation.



Channel	Current setup channel.
Username	Username of the IP camera (default: admin).
Password	Password of the IP camera (default: (blank) no password).
Preview Mode	
Real time	Optimize for real time (live) view.
Balance	Balance setting between the real time & recording mode (default).
Fluency	Optimized for recoding.
Image Rollover	Rotate the image 180° (flip image upside down).
Reboot IPC	Restart the camera remotely from the NVR system.

5.2.8 Channel

Function: Edit each of the channel setup. refer to **5.3.4.1 Channel info**.

5.2.9 Wi-Fi setup

Function: Edit system Wi-Fi configuration for camera connection. (SSID, Password, Wi-Fi channel, Region) refer to **5.3.3.6 Wi-Fi Setup**

5.2.10 Repeater

Function: Setup Air Bridge feature to boost the Wi-Fi signal of Crystal Vision NVR system.

**** Air bridge only works on the firmware version listed below ****

System

Version: v. 2.6.3.7_21322230 or above

Camera:

Version: v. 1.3.35.391802 or above

The Air Bridge technology uses the cameras / IPC router as repeaters. This feature allow you to boost the Wi-Fi signal using the camera / IPC router located near by the camera with weak signal to boost & extend the range of Wi-Fi. This will increase the Wi-Fi range up to %150.

Air Bridge setup guide

Operation Steps:

1. Right click to bring up the main menu and go to **'Video Manage'**
2. From the video manage please make sure you have all the camera / router connected and ready.
3. Click on the **'Repeater'**
4. Click **'+'** right of the camera channel or IPC router you will like to use it as repeater, and select the channel you will like to link to increase the signal.

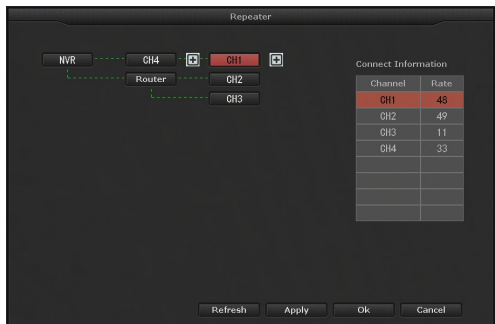
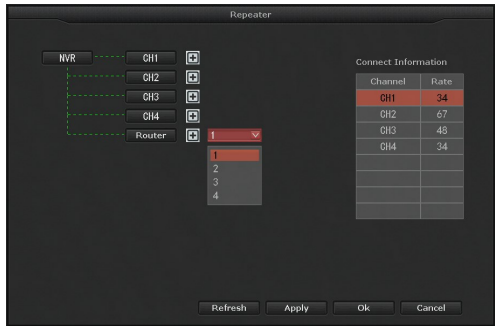


For example, CH 2 & 3 have weak signal which is located near the IPC router, and the CH4 is located near the CH 1. Therefore, CH 2 & 3 will be link to the router, and the CH 4 will get link to the CH 1.

5. Once you have click **'Apply'** to save the setting you can now click on the **'Refresh'** and check the setting to make sure it is configure correctly.

**** Please allow 20~30 second after you have apply the setting before you click on the refresh. When you are done you can see the increase of the signal rate for those camera has been link using the air bridge connection.**

6. When you are done setting up the linear connection you can exit the setup by clicking **'OK'** for repeater option, and **'OK'** for video manage.



Tip:

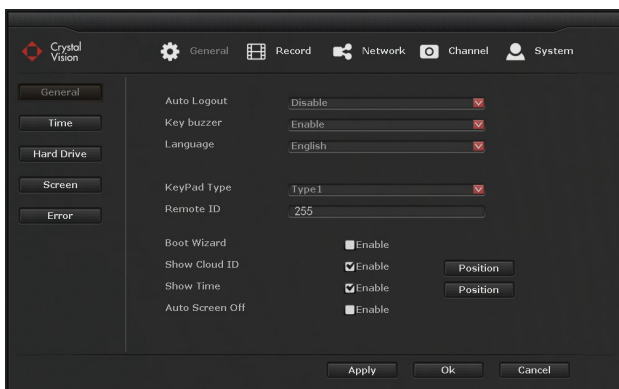
- If you have multiple air bridge to setup, please try to setup one at a time to avoid system error.
- NVR system & cameras need to be stay connected to constant power.
- If you are having an issue liking the camera with weak signal, please move the camera closer to the system to link the camera first. Once the camera has been link you can move the camera back to the previous location.

5.3 System setup

Function: System configuration such as: Time, Screen resolution, Recording, Network, Notification, User, etc....

5.3.1 General

5.3.1.1 General



Auto Logout: Enable / Disable auto logout

Key buzzer: Enable / Disable keyboard sound.

Language: Change the system language

Keypad Type: Change the keyboard type.

Remote ID: Remote controller channel setting.

Boot Wizard: Enable / Disable startup setup guide.

Show Cloud ID: Enable / Disable display of Cloud ID on screen

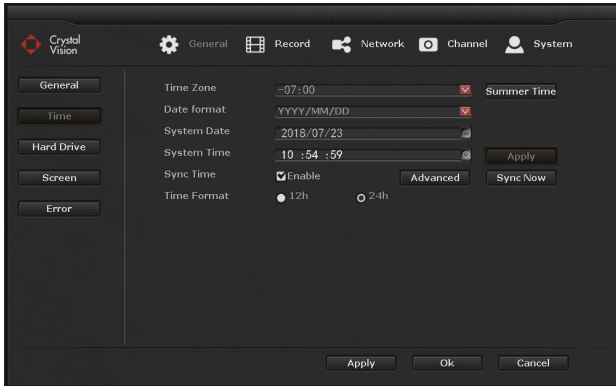
Show Time: Enable / Disable display of system time on screen (Note: this is for system time stamp, and not the time stamp of the cameras).

Auto Screen Off: Enable / Disable screen sleep mode.

Tip: **'Position'** allows you to change the located of the displayed information.

5.3.1.2 Time

Function: Set Time Zone, System Date & Time.



Time Zone: Select your local time zone

Summer Time: Set summer time manually

Date Format: Select date display format

System Date: Set the system date

System Time :Set the system time

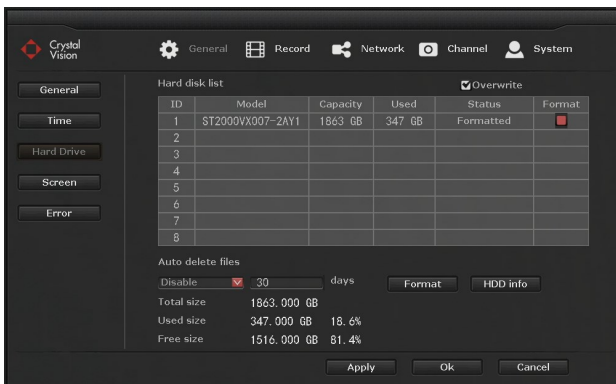
Sync Time: Enable to sync time via internet connection. (Internet connection requires)

Time Format: Select time display format. (12h / 24h)

Note: Disable 'Sync Time' option to set the date & time manually

5.3.1.3 Hard Drive

Function: Display hard drive information, and allows user to format the hard drive.



Hard disk list – Display list of hard drive with information.

Overwrite – Enable / Disable overwrite function when hard drive is full

Auto delete old files – Enable / Disable auto delete function. This option allows the system to automatically delete the recordings older than the selected day.

(If the auto delete is set to 10 days the system will only keep last 10 days of recording.)

Note: As default the hard drive will automatically overwrite once the hard drive is full.

Formatting the hard drive:

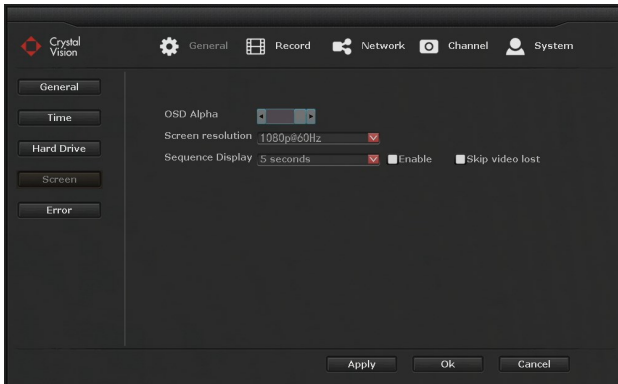
1. Right click to bring up the main menu and go to: system setup > General > Hard Drive
2. Check the hard drive list and 'check' the box right of the hard drive.
3. After you have check the hard drive click 'format', and 'yes' for the confirmation message.
4. This process may take few minute, and when it is done click 'OK' to save & exit.

Note:

- *By formatting the hard drive it will delete all the recording from the hard drive. Please back up important recordings before formatting the hard drive.*

5.3.1.3 Screen

Function: Screen display setting



OSD Alpha: Change interface opacity

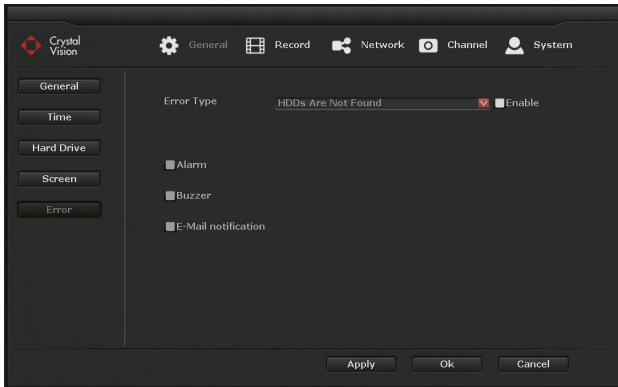
Screen Resolution: Change resolution of screen resolution

Sequence Display: Enable / Disable auto channel sequence

Skip Video Lost: Skip channel with no video source

5.3.1.5 Error

Function: Enable / Disable System error notification.



Error Type: Enable / Disable following system error notification

Alarm – display red triangle bottom right of screen

Buzzer – sound buzzer when error occurs

E-mail notice – Send E-mail notification with error information.

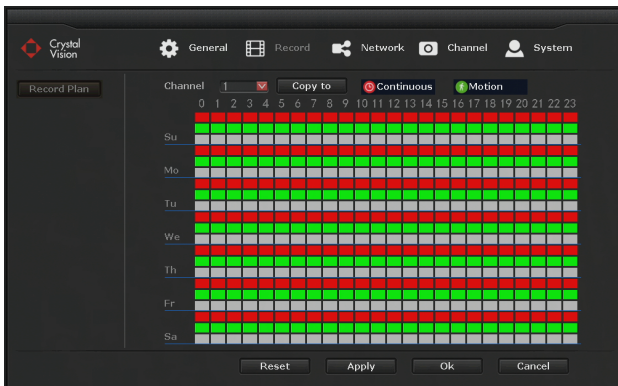
Tip: To use the E-mail notification you must first setup the E-mail under the 'network' > 'e-mail'.

5.3.2 Record

5.3.2.1 Recording Plan

Function: Record enable you to set the recording schedule to record 24/7 or selected time frame. You can also set the recording mode, so the system will record 24/7 (time) or record with motion detection (motion).

**** As default recording is set to 'time' (24/7) recording.**



Setting up recording plan:

1. Right click to bring up the main menu and go to: System setup > Record > Record Plan.
2. From the record plan select the 'channel' (camera #) you like to change setting.
3. Click 'Reset' to clear all the setting.
4. Select 'Continuous' or 'Motion' recording depends on the setting you prefer.
5. With the recording type selected, 'Click and Drag' the area to select the date & time
6. When you are done click 'Apply' to save the setting.
7. Repeat steps 2 ~ 6 to change the recording setting for different channels.
8. Click 'OK' to save & exit when you are done.

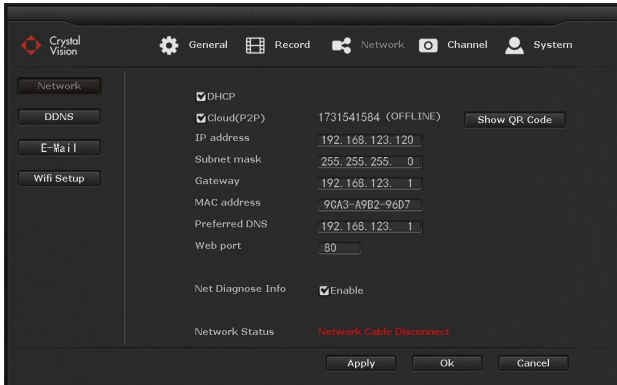
Tip:

- You can individually setup the camera recording setting, or you can use 'Copy to' function to copy the current setting to other channels.
- Different recording mode will show in different color at the time bar below the schedule.
- You can combine different recording mode, and record motion in day time and continuous at night.

5.3.3 Network

5.3.3.1 Network

Function: Allow system IP Address configuration for the network / internet connection setup.



DHCP: Enable / Disable DHCP, (Disable this option to manually configure the NVR system)

Cloud (P2P): Enable / Disable NVR system cloud ID number.

Show QR Code: Display cloud ID in QR code.

IP address: Display current system's IP address information, and can be change manually.

Subnet mask: Display current system's subnet mask information, and can be change manually.

Gateway: Display current gateway, and can be change manually.

MAC address: Display current system's MAC address

Preferred DNS: Display current system's DNS information, and can be change manually.

Web Port: Video signal transmit port for remote viewing. (Default: 80).

Net Diagnose Info: Enable / Disable Network status.

Network Status: Display current network status.

Healthy Network: NVR system is connected to the internet.

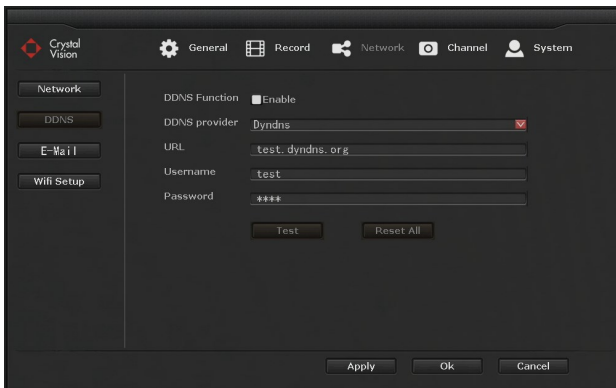
Network cable disconnected / Gateway unreachable: NVR system is not connected to the internet.

Note:

- Remote view will only work when NVR is connected to the router and connected to the internet.
- DHCP is Enable by the default
- If the NVR system is connected to the internet, the 'network status' will display 'healthy network'
- If you have an issue with automatic DHCP, you can disable the DHCP and manually configure the IP address. Please refer to your router information.

5.3.3.2 DDNS

Function: Enable customer DDNS services



DDNS Function: Enable / Disable DDNS

DDNS Provider: Select from list of custom DDNS services providers

URL: Enter customer URL address. (Must be register with DDNS services providers first)

Username: Enter the username of the DDNS provider

Password: Enter the password for the username information above.

Test: Test the DDNS connection setup

Reset All: Reset all the DDNS information.

5.3.3.3 E-Mail

Function: Setup E-mail server information for e-mail alerts.



E-Mail Function: Enable / Disable E-mail

SMTP Provider: Preset information of e-mail providers. (If you provider is not listed, you will need to enter in the SMTP information manually.)

SMTP Server: Enter in the SMTP server address of e-mail services provider you are using.

Port: Enter number of SMTP server

Encryption Type: Select the encryption type depends on the SMTP server

Sender: Enter your e-mail address

Password: Enter password of your e-mail address

Sendee 1: Enter the receiver's e-mail address

Sendee 2: Enter the 2nd receiver's e-mail (optional)

Subject: Title of the e-mail sent

Interval: The delay between sending e-mail notification

Health Mail Interval: Delay the time between sending e-mail notification by minute.

Test: Test the current e-mail setting

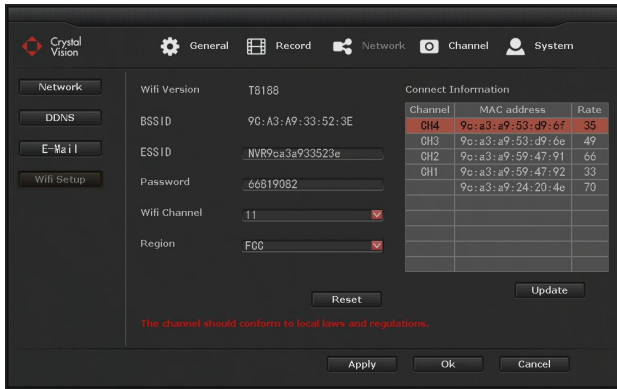
Reset All: Reset all the current setting

Tip:

- To receive e-mail notification you will need to check '**E-mail notification**' under the '**Channel**' > '**Motion Detection**'.
- Health Mail Interval need to be '**Enable**' to take an effect.
- If you fail to pass the test, please double check if you have enable the e-mail function, and input the correct information.

5.3.3.4 Wi-Fi Setup

Function: This option allows users to change NVR's Wi-Fi SSID & password setting and some other router related settings



Wi-Fi Version: Current Wi-Fi card version

BSSIS: Wi-Fi MAC address

ESSID: Current SSID information

Password: NVR system Wi-Fi password information

Wi-Fi Channel: Current Wi-Fi channel information

Region: Wi-Fi Channel Region setup (Default: FCC)

Connect Information – Display current camera connection strength

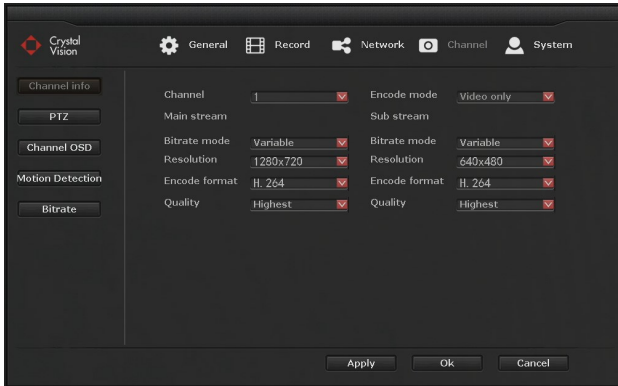
Note:

- *Change the Wi-Fi information such as ESSID & Password will cause cameras to lose connection with the system. Please make sure to re-sync the cameras to the system if you decide to change the Wi-Fi setting information.*
- *If you plan to use two NVR system in the same location, you can change the Wi-Fi Channel to avoid interference.*

5.3.4 Channel

5.3.4.1 Channel info

Function: Display the camera current setup information. Such as stream, resolution, bitrate, frame rate, etc...

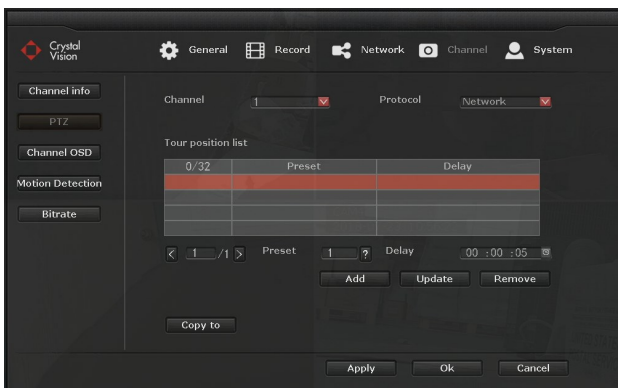


Note: You can only check the current setting, and not able to edit any information. All the setting are fix and not changeable.

5.3.4.2 PTZ

Function: Allow to add optional PTZ / Speed dome camera into the system.

Pre-Requirement: Make sure the PTZ / Speed dome camera is connected to the system or same network via Ethernet cable.



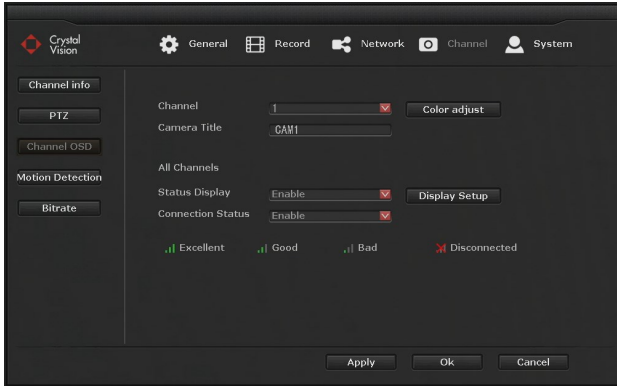
Channel: Select the channel you want to set the PTZ Preset

Protocol: Choose the correct protocol of the PTZ

Tour position list: use the 'preset' to move the camera and save the position to create a list for PTZ tour.

5.3.4.3 Channel OSD

Function: Allow user to change the name / title of each camera, and enable / disable the status display.



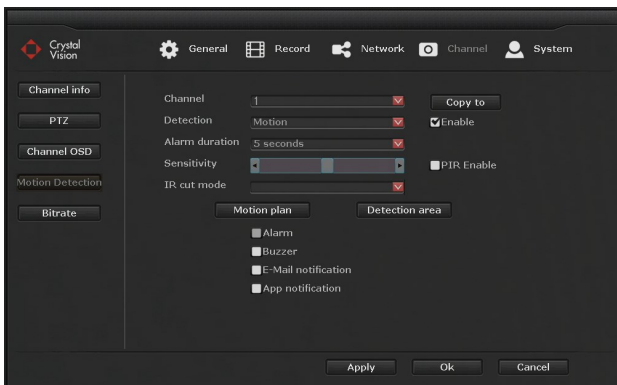
Operation Steps:

1. Right click to bring up the main menu, and go to: system setup > Channel > channel OSD.
2. Select channel you will like to edit the title and status display.
3. Type in the camera titles such as: Cam1, Front Door, Back yard, etc.
4. Enable or disable the 'Status Display' & 'Connection Quality'
5. Click 'apply' to save the setting and repeat steps 2 ~ 5 to change the title or status display for other channels.

Tip: You can also adjust the color & brightness by clicking the 'Color adjust', and change the location of the status display area by clicking the 'display'

5.3.4.4 Motion Detection

Function: Allow system to trigger alarm, buzzer, E-mail & App notification when motion is detected.



Operation Steps:

1. Right click to bring up the main menu, and go to: **System setup > Channel > Motion Detection**.
2. Select the '**Channel**' (Camera) you will like to receive notification from.
3. Set the '**Detection**' as '**Motion**' and set the '**Sensitivity**' of the motion detection. Move the slider to adjust the sensitivity. (Left - low / Right - high)
4. Select the '**Alarm duration**' from 1 ~ 10 second. (for '**Buzzer**')
5. Check the box to enable the following functions.
 - Alarm**: Display notification icon on the screen.
 - Buzzer**: Sound buzzer when motion is detected.
 - E-mail Notice**: Send E-mail notification
 - APP Alarm**: Send application notification via IP Pro
6. When you are done click '**Apply**' to save and repeat the steps 2 ~ 6 to enable the setting for different channel (camera).

Note:

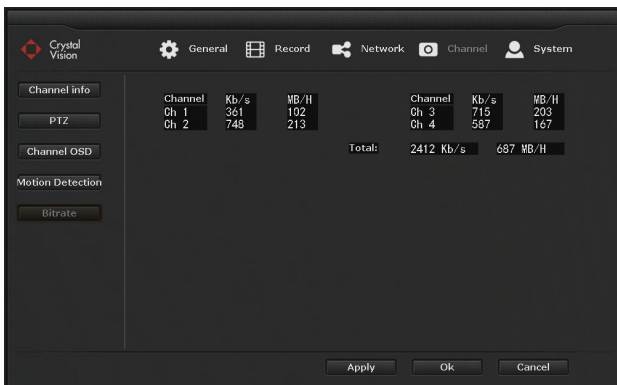
- **Motion Plan**: Allow user to set a schedule to send notification within the selected time frame.
- **Detection Area**: Allow user to select the area where the camera will detect motion from. The 'red highlighted' area is the selected area where the camera will detect motion from. You can also use the 'right click' to bring up the menu to: fill all, clear all, return.

Tip:

- Alarm duration is only for the 'buzzer' function. It allows user to select the time for how long the buzzer will sound. We recommend you to set the duration between the 1 ~10 second long.

5.3.4.5 Bitrate

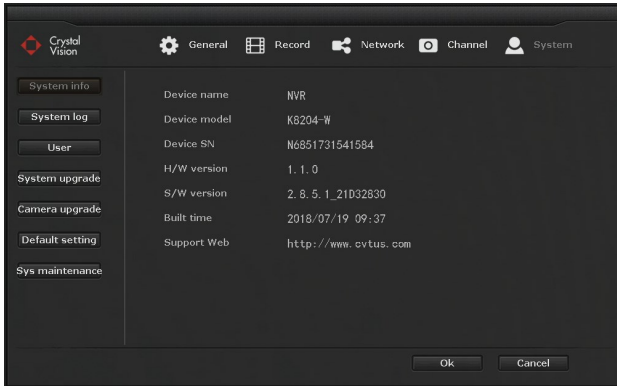
Function: Display current bitrate usage of the each channel in real time.



5.3.5 System

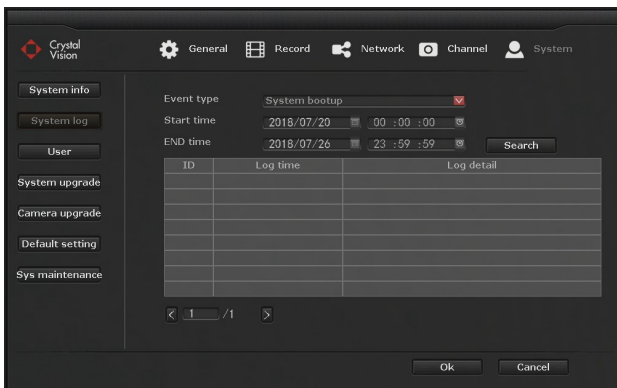
5.3.5.1 System info

Function: Allow user to check the device's information including Device name, Device model, Device SN, H/W version, S/W version, Built time, etc.



5.3.5.2 System log

Function: Allow users to search and check the system log file of the NVR system.



Operation Steps:

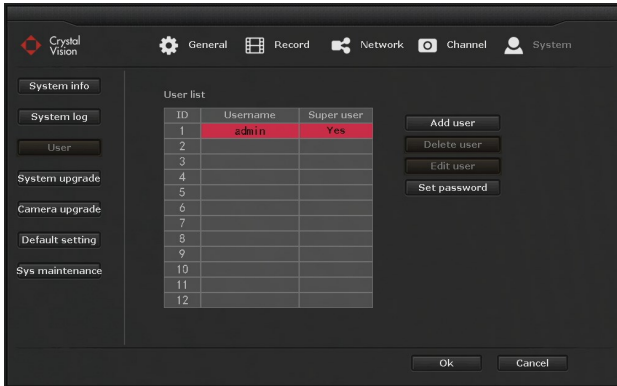
1. Right click to bring up the main menu, and go to: **System setup > System > System log**.
2. Select the event type from the drop down menu, and set the time range and click 'search'.
3. Log information will be displayed on the chart below right under the search button.

Tip:

- Click Left or right arrow to navigate the log information page.
- Log information are saved in the hard drive, formatting the hard drive will delete all the log information.
- Event log is available for: System bootup, System shutdown, Configuration change, etc...

5.3.5.3 User

Function: Allow users to add, delete and edit username and password.



Operation Steps:

User password change

1. Right click to bring up the main menu, and go to: **System setup > System > User**.
(Log into username you will like to change password).
2. Click on the '**Set password**' and type in old password (as default there is no password).
3. Type in '**New password**' and re-enter the same password on the '**Repeated**' for confirmation. (Password must be 0 ~ 8 characters long)
4. Click '**OK**' and '**OK**' one more time for the system setup to save & exit.

Creating new user

1. Right click to bring up the main menu, and go to: **System setup > System > User**.
(Log in to '**Admin**' or '**Super User**')
2. Click on '**Add user**' and type in new username and password.
(Password must be 0 ~ 8 characters long)
3. For full access to the system '**Check**' the box for '**All**' and click '**OK**'.
4. To add more user please repeat steps 2, 3 to add more user.
5. When you are done click '**OK**' to save & exit the system setup.

Edit user

1. Right click to bring up the main menu, and go to: **System setup > System > User**.
2. Select the username you will like to edit and click '**Edit user**'
3. Change the permission of the selected user.
4. When you are done click '**OK**' to save the setting.

Delete user

1. Right click to bring up the main menu, and go to: **System setup > System > User**.
2. Select the username you will like to delete and click '**Delete user**'.
3. For the confirmation message click '**Yes**' to delete the user

Tip: The default username is 'admin', and default password is '(blank)' - no password. Only 'super users' are allow to add, edit, and delete users and their permissions. Admin (Administrator) CANNOT be deleted.

User Permissions

Super user: Allow user to add, edit, and delete other user.

Video Playback: Search and playback of recorded video.

Video backup: Back up the recorded video

PTZ control: Control the PTZ camera movement

Volume: Adjust the audio output volume *

Manual record: Enable / disable manual recording (overwrite current record setting to 'Continuous' until disable)

System setup: Configuration of system setup.

Split screen: Adjustment of single view or mult-view *

Channel adjust: Adjustment of camera image brightness, color tone, saturation, and contrast.

Setup Wizard: Start up setting guide

System Mode: Set system mode *

Remote: Allow remote view using smartphone or PC

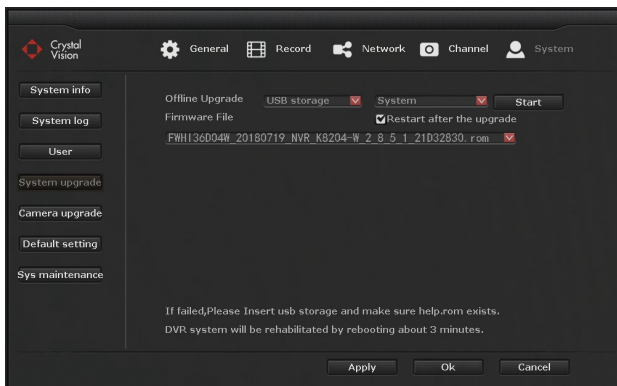
Config: Remote configuration of NVR system *

Playback: Remote playback using smartphone or PC

(*Does not apply to model CVT9604E/8E)

5.3.5.4 System upgrade

Function: Allow users to upgrade system firmware version.



Operation Steps:

1. Download the Latest Firmware on your USB Flash Drive.
(Please check the website at 'www.cvtus.com' for the latest firmware information)
2. Insert the USB Flash Drive into the available USB slot on the NVR system.

3. Right click to bring up the main menu, and go to: **System setup > System > System upgrade.**
4. Check the '**Auto restart**' box
5. Select '**USB storage**' from the drop-down menu.
6. Click on the '**System**' from the drop-down menu.
7. Click on the '**Start**' and click '**OK**' on the popup window.

Note: In case of the cameras lost the connection to the system after the upgrade please follow the instruction below:

Adding disconnected cameras:

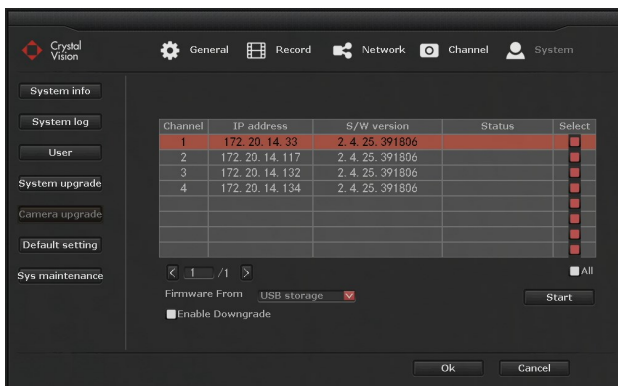
1. Right click to bring up the main menu, and go to: **Video manage.**
2. Click on the '**Refresh**' from the right side menu
3. Wait for about 30 seconds and let the list occupy.
4. Add the cameras by Clicking '**Auto Add**' on the list back into the system.
5. Click '**Yes**' on the Popup box with '*Auto Add will perhaps modify IP of IPC, Are You Sure to Continue*' Message.
6. Click '**No**' on '*Want to modify IP of IPC*' Message.
7. Confirm that you have all your cameras and click '**OK**' to save and exit the system menu.

Tip:

- *Please use an USB flash drive to upgrade the firmware. USB hard drive may not be recognized by the NVR system.*
- *USB flash drive must be formatted to 'Fat32' format.*
- *Make sure the upgrade firmware file (.rom) is located at the root directory of the USB flash drive and not in the folder.*
- *DO NOT unplug the system power during the upgrade, or the system may get damage.*

5.3.5.5 Camera upgrade

Function: Allow user to upgrade camera firmware.



Operation Steps:

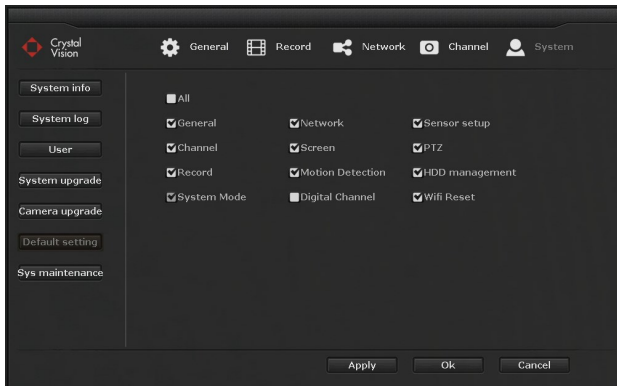
1. Right click to bring up the main menu, and go to: **System setup > System > Camera upgrade.**
2. Check the select boxes next to the camera you want to update from the list.
3. Select '**USB storage**' from the Firmware from drop-down menu.
4. Click '**Start**' to start; this will open a confirmation dialogue box. Click '**Yes**' to Confirm
5. Wait till and confirm '*Upgrade Successful*' on Status for all of your selected camera/s.
6. Click '**OK**' to save the change and exit.

Tip:

- Please use an USB flash drive to upgrade the firmware. USB hard drive may not be recognized by the NVR system.
- USB flash drive must be formatted to 'Fat32' format.
- Make sure the upgrade firmware file (.rom) is located at the root directory of the USB flash drive and not in the folder.
- DO NOT unplug the system power during the upgrade, or the camera may get damage.
- If you are getting message 'Upgrade fail' this could be an issue with weak signal, or the cameras has higher version of firmware already installed.

5.3.5.6 Default setting

Function: Reset NVR system setting to factory default.



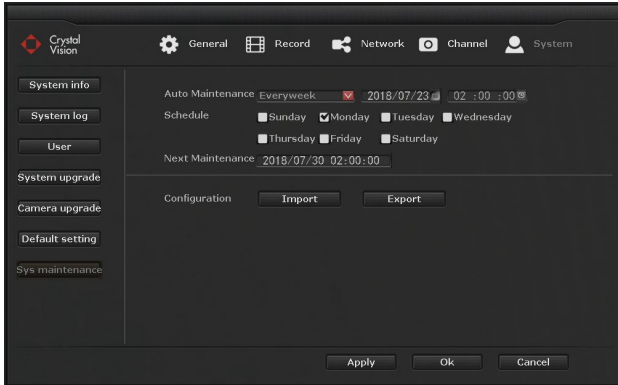
Operation Steps:

1. Right click to bring up the main menu, and go to: **System setup > System > Default setting.**
2. Check the functions you will like to reset and click '**Apply**' > '**Yes**' for confirmation message.

*Note: To keep the camera connection please '**UNCHECK**' the '**Digital Channel**'. Digital channel is for the wireless camera connection setting, therefore, please uncheck this function before resetting the system.*

5.3.5.7 System maintenance

Function: Enable / Disable system auto maintenance function (system restart).



Operation Steps:

1. Right click to bring up the main menu, and go to: **System setup > System > Sys maintenance**.
2. Enable 'Auto maintenance' by selecting 'Once', 'Everyday', or 'Every week'
3. Select the 'date', 'time', and 'weekday' to setup a schedule.
4. Click 'Apply' to save the setting

Config Export: Export current setting to USB flash drive.

Config Import: Import setting from the USB flash drive.

Note:

- With 'Auto Maintenance' enable the system will be automatically restart on the selected date to fix any type of error or issue with the system. During the restart the system will not be able to record any information.
- USB flash drive must be plugged in, and formatted to 'Fat32' format.

5.4 Video Playback

Function: Playback recorded video.



Operation Steps:

1. Right click to bring up the main menu, and go to: 'Video Playback'.
2. Select the date using the calendar.
3. Once you have selected the date click on 'Search' to load the time frame at the bottom.
4. The time frame shows the recording as bars from 0 to 24 hours.
5. Use the player control to 'Rewind', 'Pause', 'Play', and 'Fast Forward'.

Tip:

		
Pause	Play	Fast Forward

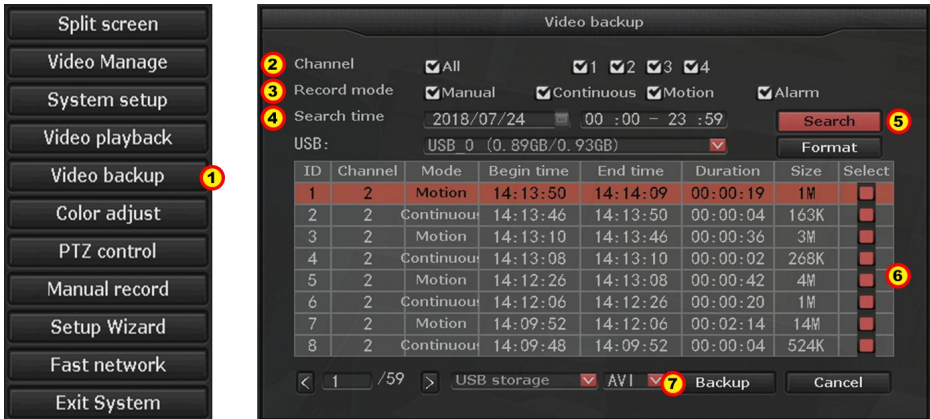
- The highlighted dates indicates that there is recording.
- The time frame bar color may vary depends on the recording type. (Time: Red, Motion: Green, Manual: Blue).
- Playback can be controlled through the playback control bar.
- You can playback up to 4 channel simultaneously.

5.5 Video Backup

Function: Backup the recorded videos in the hard drive into the USB flash drive

You can back up the video to USB flash drive.

Before you start please make sure to plug the USB flash drive into the NVR's USB port.



Operation Steps:

1. Right click to bring up the main menu, and go to: 'Video Backup'.
2. Select the 'Camera channel' or 'All' for search.
3. Select the record mode for search. (Select from 'Manual', 'Time', 'Motion')
4. Select the 'Date' & 'Time frame' (start time ~ end time) for search.
5. Click "Search" to load the recorded video files.
6. Find the channel and time frame of all of the files you will like to back up and 'Check' the 'Box' on the right.
7. Once you have check all the box click "Backup" to start the backup process.

Tip: Please make sure that the USB flash drive have enough storage space, and it is formatted to Fat32 format.

Note: For HEVC (H.265) systems (CVT804A-20WB / CVT808A-20WB), you will need to download the HEVC (H.265) codec for your media player, or download 3rd party media player supports the HEVC (H.265) codec. For more information, please refer to the code information depends on your media player.

5.6 Color Adjust

Function: Adjust the color and brightness of each camera.

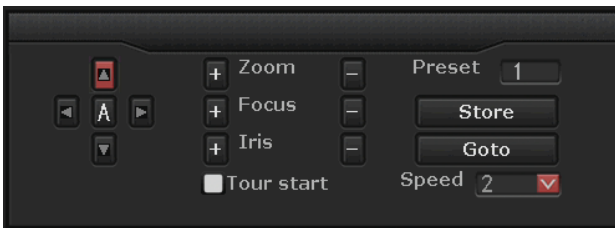


Operation Steps:

1. Select the camera you will like to adjust the color by 'Double click' on the camera image.
2. Right click to bring up the main menu, and go to: 'Color adjust'.
3. You can change 'Hue', 'Brightness', 'Saturation', and 'Contrast'.
4. When you are done click 'Ok' to save & exit.

5.7 PTZ Control (Requires PTZ camera)

Function: Allow user to control PTZ camera.



Operation Steps:

1. Right click to bring up the main menu, and go to: 'PTZ Control'.
2. Control PTZ camera using the on-board PTZ controller

Tip:

- This function only works with the PTZ camera connected.
- If you have multiple PTZ cameras connected, please select the camera before opening up the PTZ control.

5.8 Manual Recording

Function: Allow user to overwrite any recording plan to record continuously.



Operation Steps:

1. Right click to bring up the main menu, and go to: **'Manual Recording'**.
2. Select or deselect the **'Channels'**
3. Click **'Ok'** to save & exit

Tip:

- *Selected channels will enable the manual recording, and overwriting any recording plan.*
- *Deselecting the channel will disable the manual recording, and go back to regular recording mode.*

5.9 Setup Wizard

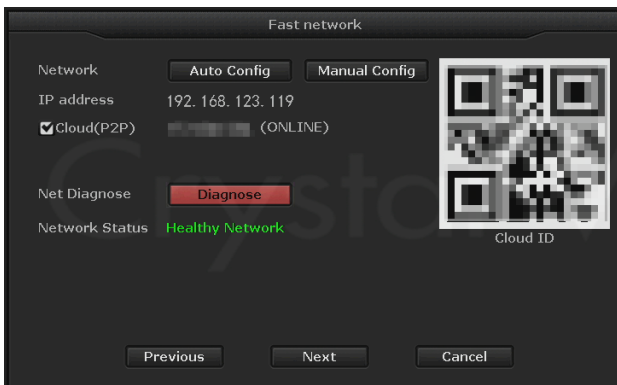
Function: Allow quick start up setup for the NVR system.

Operation Steps:

Please refer to **4.2 Setup Guide** on page 15.

5.10 Fast Network

Function: Allow quick network setup and auto configuration / manual setup.



Operation Steps:

1. Right click to bring up the main menu, and go to: **'Fast Network'**.
2. Check the cloud status. (**Online / Offline**)
3. If the system is **'Offline'** click **'Auto Config'** to renew the IP address of the NVR system.
4. Click **'Ok'** to save & exit.

*Tip: In case you have an issue with the IP address you can manually setup the IP address using the **'Manual Config'**.*

5.11 Exit System

Function: Allow user to 'Log out', 'System Reboot', 'Close Screen Display', 'System Shutdown'



5.11.1 Log Out

Function: Allow user to lock the system by login out.

Operation Steps:

1. Right click to bring up the main menu, and go to: **'Exit System'**.
2. Click **'Logout'**.

Tip: Logout from the system to lock the system.

5.10.2 System Reboot

Function: Allow users to restart the system.

Operation Steps:

1. Right click to bring up the main menu, and go to: **'Exit System'**.
2. Click **'Reboot'**.

Tip: Reboot will restart the NVR system, and it will resolve any minor issue.

5.11.3 Close Screen Display

Function: Disconnect all display output

Operation Steps:

1. Right click to bring up the main menu, and go to: '**Exit System**'.
2. Click '**Close screen output**'.

Tip: This will only stop displaying the image, however, the screen is still "ON". If you like to turn off the screen please use the "Screen" button located front of the NVR system.

5.11.4 System Shutdown

Function: Allow user to power down the system.

Operation Steps:

1. Right click to bring up the main menu, and go to: '**Exit System**'.
2. Click '**Shutdown**' > '**Yes**'.
3. '**Unplug**' the '**power adapter**' once you see the message "**You can power of the machine now.**"

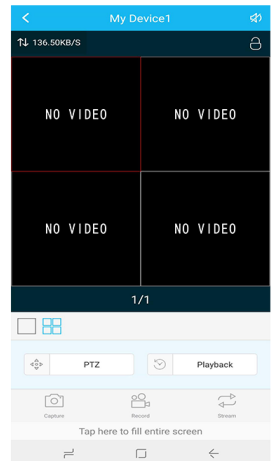
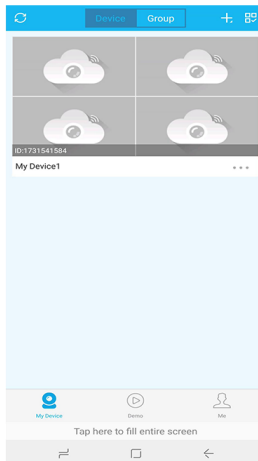
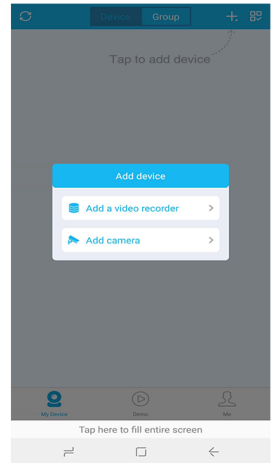
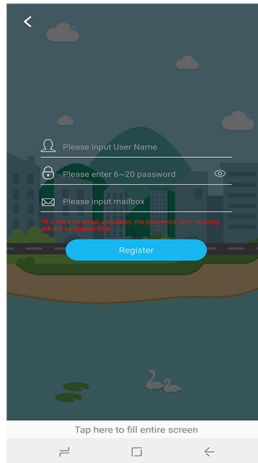
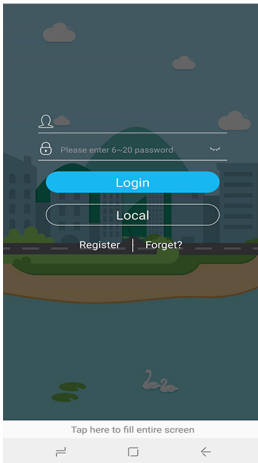
Tip: To turn the system back on simply plug the power back into the NVR system.

6. Remote view.

Note: Before setting up the remote view for the smartphone or PC please make sure the NVR system is connected to the internet router / modem via Ethernet cable, and make sure it is 'Online'.



IP Pro



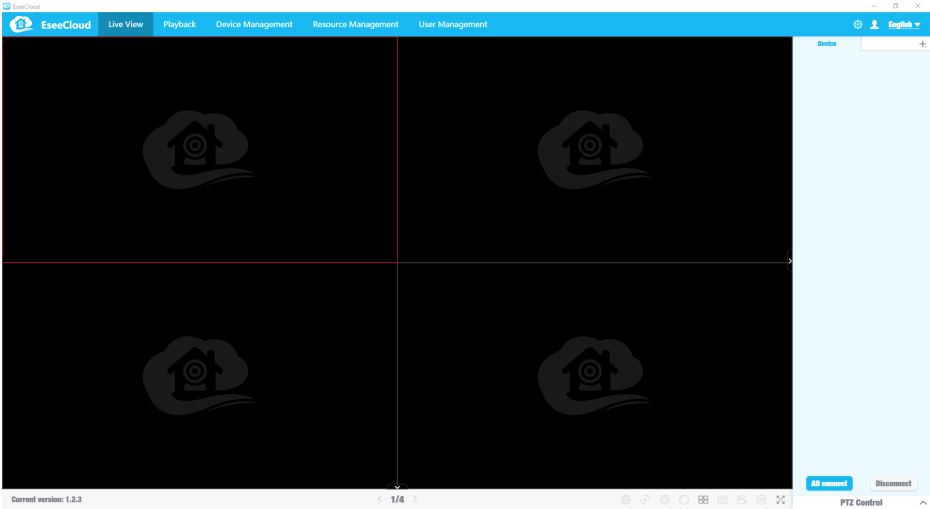
6.1 Smartphone (Android / iOS)

Operation Steps:

1. Download the free application **IP Pro** from Google Play or App store, and install it on our smartphone.
2. Open up the application and if you are a new user, please tap the '**Register**' to create a new account for the IP Pro. Creating an account will allow you to view your camera on any mobile devices using the same account.
3. After you have log in to the application tap '+' at the top right corner, then tap '**Add device by ID**' (Android) or '**Cloud ID**' (iOS)
4. From add device enter in the following information.
 - **Cloud ID:** NVR systems Cloud ID number
 - **Descriptions:** Ex. Home, Office (optional)
 - **Username:** NVR system username (as default 'admin')
 - **Password:** NVR system password (as default '(blank)-no password')
5. Once you have input all the information tap '**Submit**' or '**Save**' on the top right.
6. Now tap on the device you have just added to start the remote view.
7. When you are done tap the back arrow on the top left to exit the remote view before you close the application.

6.2 CMS software for Windows & Mac

Function: Allow user to remote view from PC. Using the CMS software you can connect more



than one NVR system at the same time.

1. Go to our website at: www.cvtus.com > support > download
2. Download the 'EseeCloud' and install it on your computer.
3. Once installation is finish run the software and log in using the default username & password. (Default username: 'admin' / password '(blank) – no password')
4. After you have log in to the system go to 'Device management'
5. Enter in your 'Cloud ID', NVR's 'Username', NVR's 'Password', and 'Note' (ex, home, office).
6. With the information entered click 'Add' to add the device.
7. Now click on the 'Live View' and click 'All connect' located at the bottom right to start the remote view.

Note:

- *In you are unable to start the software with just a black screen, please try to run the software by right clicking the 'EseeCloud' icon and click 'run as administrator'.*
- *For more information about the EseeCloud please vision out website at: www.cvtus.com for full manual.*

WARRANTY:

Crystal Vision Technology, Inc. ("Crystal Vision") provides the following warranty to the original retail purchaser only (the "Purchaser") with respect to this product (the "Product"): For a period of one (1) year after the date of sale, the Product shall be free from manufacturing defects in material and workmanship. In the event that the Product is defective, the Purchaser must return the Product with the original proof of purchase receipt. In its sole discretion, Crystal Vision will either repair or replace the Product at no additional cost to the Purchaser. Any replacement Product (or parts) will be covered by the same warranty as the original Product through the expiration date of the original warranty period.

EXCLUSIONS:

This warranty does not apply to the following parts or upon the following events:

- Bulbs, LEDs and batteries;
- The Product was not used or installed in the manner described in the installation instructions;
- Negligent use of the Product or misuse or abuse of the Product;
- Electrical short circuits or power surges;
- Use of replacement parts not supplied by Crystal Vision;
- Product is either tampered with, modified or repaired by another service provider;
- Product has not been maintained in accordance with the instructions;
- Accident, fire, flood or other acts of God;
- Failure to use Crystal Vision approved accessories;
- Defects or damages arising by use of the Product in other than normal conditions (including normal atmospheric, moisture and humidity conditions).

Except as otherwise prohibited by law, this warranty is in lieu of other warranties, express or implied, and Crystal Vision neither assumes nor authorizes any person to assume for it any other obligation or liability in connection with the sale or service of the Product.

In no event shall Crystal Vision be liable for any special or consequential damages arising from the use of the Product or arising from the malfunctioning or non-functioning of the Product or for any delay in the performance of this warranty due to any cause beyond its control. This warranty shall not apply to installation or the removal and reinstallation of products after repair.

Crystal Vision does not make any claims or warranties of any kind whatsoever regarding the Product's potential, ability or effectiveness to prevent, minimize or in any way affect personal or property damage or injury. Crystal Vision is not responsible for any personal damage, loss or theft related to the Product or to its use for any harm, whether physical or mental related thereto. Any and all claims or statements, whether written or verbal, by salespeople, retailers, dealers or distributors to the contrary are not authorized by Crystal Vision and do not affect this provision of this warranty.

RETURNS UNDER THIS WARRANTY:

In order to obtain service, please make sure that you have registered your product on-line no later than thirty (30) days after purchase at <http://www.cvtus.com> in the warranty registration section or in any other matter described in the instructions.

User Manual

CVT9604E • CVT9608E • CVT804A • CVT808A

