

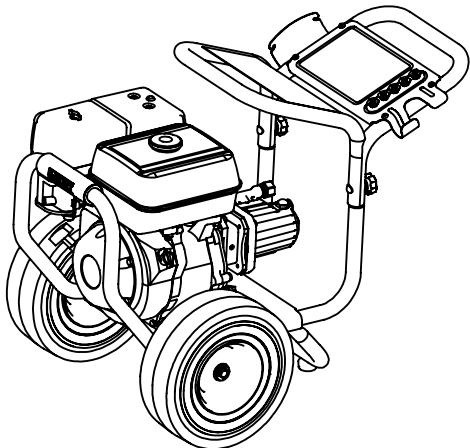
ITEM	PART NO	DESCRIPTION	QTY.
1	7105372	FRAME, BASE ASSEMBLY FLAT BLACK, 13.25 C-C	1
2	7105373	HANDLE, REAR SVC ASSEMBLY, FLAT BLACK WITH LABELS	1
2.1	7104807	HARDWARE KIT, HANDLE MOUNTING	1
2.2	7104837	BOLT, SADDLE	1
2.3	7103161	HOLDER, RUBBER 5 NOZZLE	1
†	2.4	SCREW, 1/4-20 X 3/4 TORX PANHEAD	4
3	7105374	REAR HANDLE, QUICK START WITH LABELS	1
4	7104637	ENGINE, SVC ASSY GX270UTQAG2	1
4.1	7105453	SHAFT KEY, SQUARE 1/4 SQ. X 1-1/2	1
5	7105917	PUMP, SVC ASSY, CAT 3SPX30G11	1
¶	5.1	PUMP, CAT 3SPX30G11	1
5.2	7100355	FITTING WITH SCREEN, GHT 3/8(F) X 3/8" NPT(F)	1
5.3	7100019	COUPLER, 3/8 QC(F) X 3/8 NPT(M)	1
5.4	7101359	THERMAL RELIEF VALVE	1
5.5	7102470	PLUG, 3/8" NPT	1
†	5.6	WASHER, 3/8" SPLIT LOCK	4
†	5.7	BOLT, 3/8-16	4
6	7105376	WHEEL KIT, 13.0 BLACK WITH WASHER AND E-CLIP	2
†	6.1	WHEEL 13.0 x 5.0-6 BLACK	1
†	6.2	WASHER, 5/8" SAE FLAT	1
†	6.3	CLIP, E-TYPE 5/8" X 0.042 ZINC/CLEAR	1
7	7103292	FOOT KIT, RUBBER FOOT & SCREW	2
†	7.1	RUBBER FOOT, 1.50IN X 0.625IN	1
†	7.2	SCREW, 1/4-20 X 3/4 TORX PANHEAD	1
8	7103277	HARDWARE KIT, ENGINE MOUNTING	1
†	8.1	BOLT, 3/8-16 X 2.00 SERRATED FLANGE	4
†	8.2	NUT, WHIZ 3/8-16	4
9	7104570	HARDWARE KIT, HANDLE MOUNTING	2
†	9.1	BOLT, SADDLE 5/16-18 X 2.00"	1
†	9.2	NUT, HAND TIGHT 5/16-18	1
10	7100634	NOZZLE SET, 3.5 X 1/4 QC(M) 5 PIECE	1
11	7104641	HANDLE GRIP VINYL COVER, YELLOW	1
12	7103240	GUN AND WAND 5075PSI 3/8 PLUG X M22(F)	1
13	7103261	LANCE 31IN X M22(M) X 1/4 QC(F)	1
14	7103642	HOSE, 3/8 X 4500PSI X 50FT X 3/8 QC	1
15	7102207	SOAP HOSE AND FILTER KIT	1
*	16	TOOL, NOZZLE CLEANING, UNIVERSAL	1
*	17	MANUAL, OPERATOR DXPW60604	1
*	18	BOX, SHIPPING DXPW3835 SPECIFIC	1

† NOT SOLD SEPARATELY

* NOT SHOWN

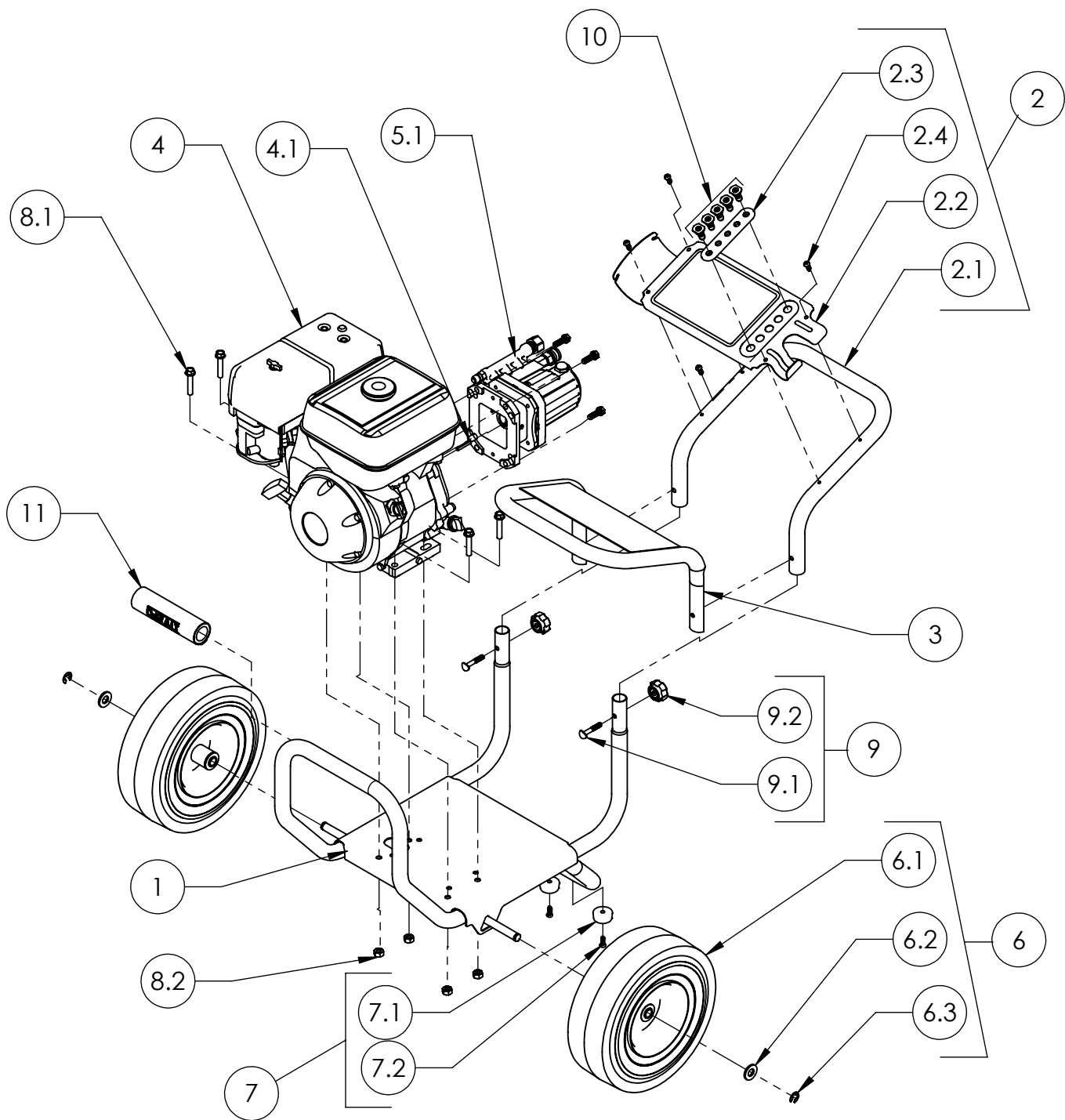
PUMP IDENTIFICATION TABLE

MACHINE SERIAL NO.	PUMP MODEL	PUMP PART NO.	PUMP KIT
304138 TO PRESENT	3SPX30G11	7103060	7105917

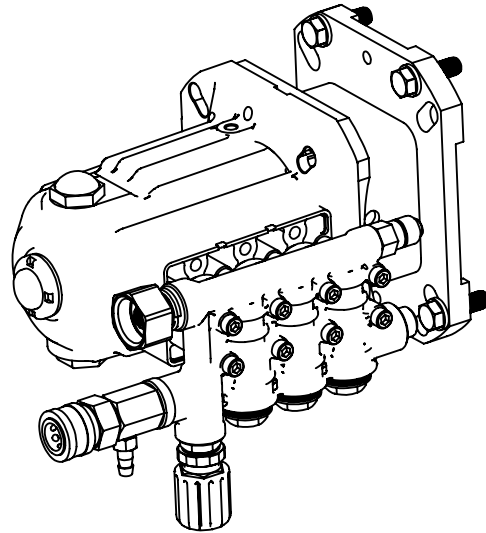


FNA-GROUP			1265 INDUSTRIAL STREET, DECATUR, AR 72722	
TITLE:			DXPW60604	
SIZE	DWG. NO.		REV.	
A	60604-S		A	
SCALE:	N/A	ECN#	DC12-0083	SHEET 1 OF 6

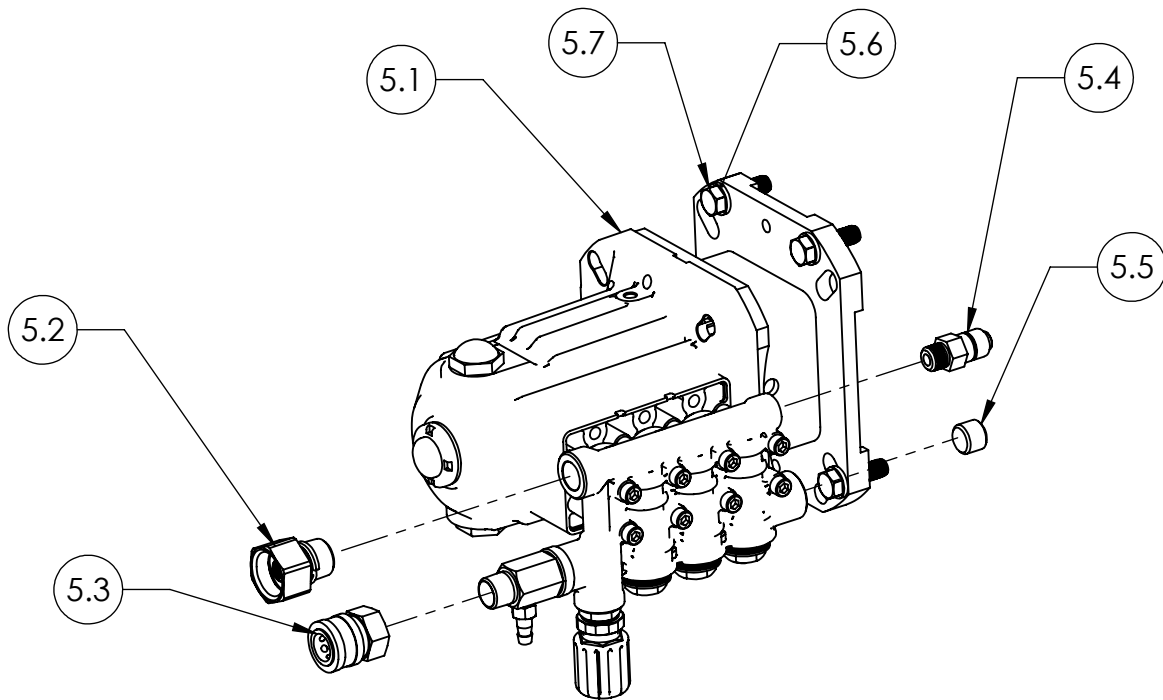
PROPRIETARY AND CONFIDENTIAL
 THE INFORMATION CONTAINED IN THIS DRAWING IS THE SOLE PROPERTY OF FNA-GROUP. ANY REPRODUCTION IN PART OR AS A WHOLE WITHOUT THE WRITTEN PERMISSION OF FNA-GROUP IS PROHIBITED.



SIZE	DWG. NO.	REV.
A	60604-S	A
SCALE: N/A	ECN# DC12-0083	SHEET 2 OF 6



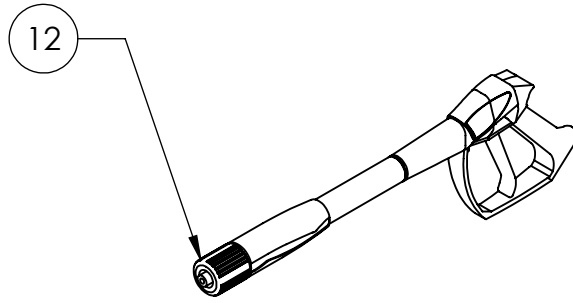
PUMP ASSEMBLY KIT PART NUMBER: 7105917



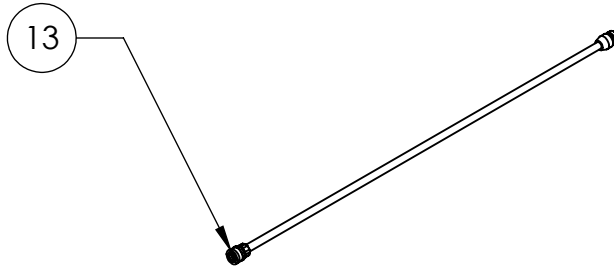
ITEM	PART NO	DESCRIPTION	QTY.
5.1	7103060	PUMP, CAT 3SPX30G11	1
5.2	7100355	FITTING, INLET GHT(F) X 3/8" NPT(M)	1
5.3	7100019	COUPLER, OUTLET 3/8" QC(F) X 3/8" NPT(F)	1
5.4	7101359	VALVE, THERMAL RELIEF 1/4" NPT(M)	1
5.5	7102470	PLUG, 3/8" NPT(M)	1
† 5.6		WASHER, 3/8" SPLIT LOCK	4
† 5.7		BOLT, 3/8-16	4

† NOT SOLD SEPARATELY

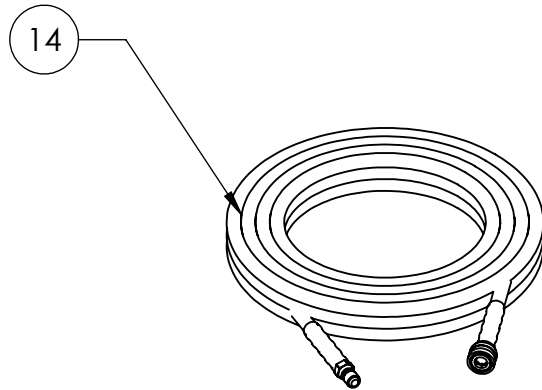
SIZE A	DWG. NO. 60604-S	REV. A
SCALE: N/A	ECN#	DC12-0083
		SHEET 3 OF 6



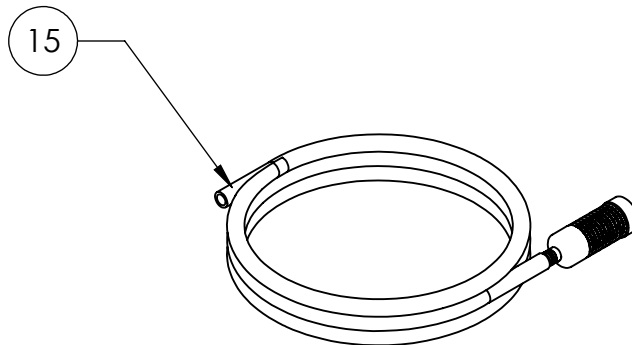
GUN AND WAND 5075PSI 3/8 PLUG X M22(F)
PART NO. 7103240



LANCE, 31IN X M22(M) X 1/4 QC (F)
PART NO. 7103261



HOSE, 3/8 4500PSI X 50FT W/3/8 QC
PART NO. 7103642



SOAP HOSE KIT
PART NO. 7102207

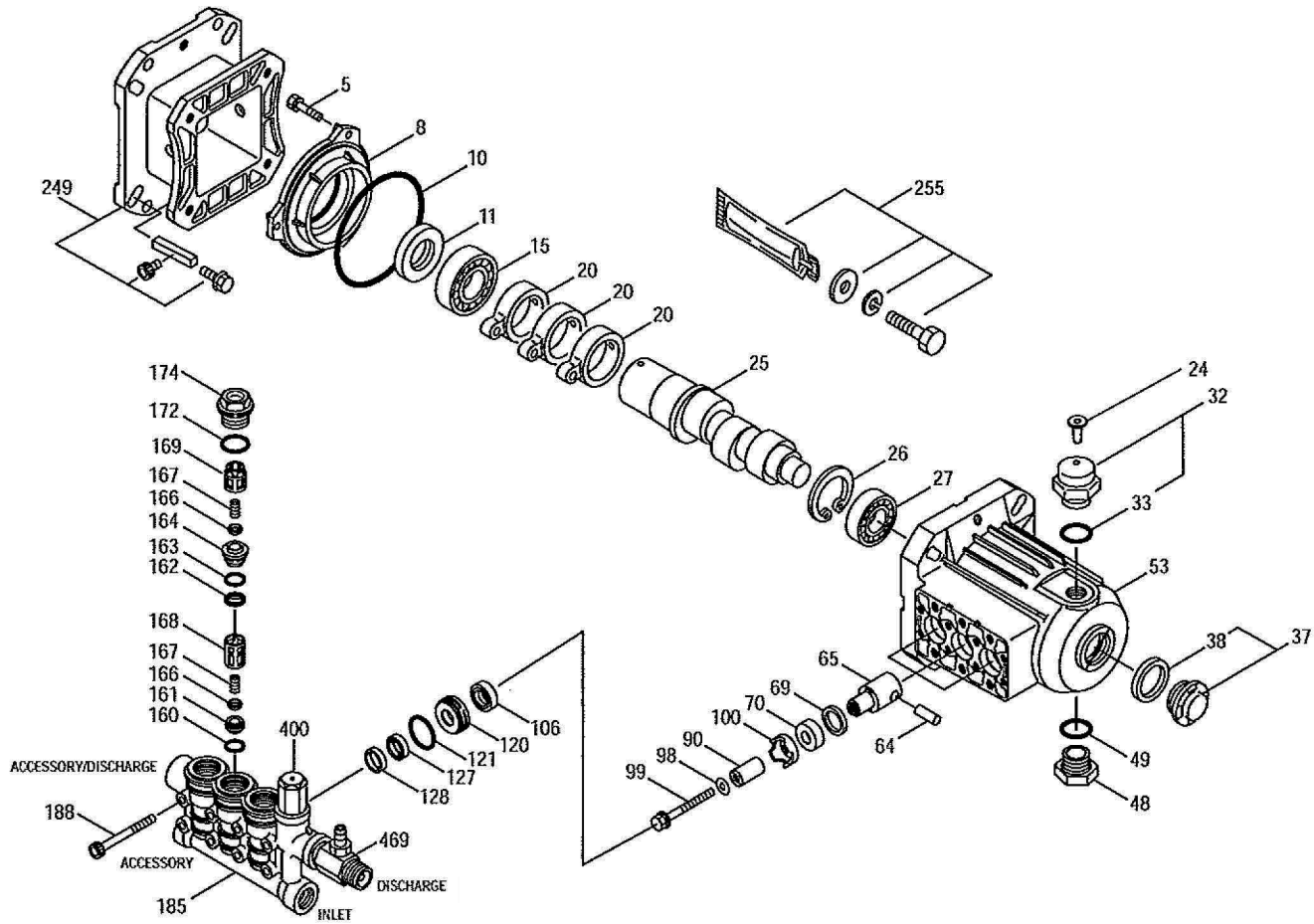
7103060

3SPX PLUNGER PUMPS

Gas Model: 3SPX30G11

EXPLODED VIEW

June 2007



PARTS LIST

ITEM	PART NO.	MATL	DESCRIPTION	QTY	ITEM	PART NO.	MATL	DESCRIPTION	QTY
5	7103819	STCP R	SCREW, HHC SEMS	3	163	N/A	NBR	O-RING, DISCHARGE SEAT	3
8	7105960	AL	COVER, BEARING	3	164	N/A	S	SEAT, DISCHARGE	3
10	7102614	NBR	O-RING, BEARING COVER	1	166	N/A	S	VALVE	6
11	7103961	NBR	SEAL, OIL	1	167	N/A	S	SPRING	6
15	7105962	STL	BEARING, BALL, INNER	1	168	N/A	PVDF	RETAINER, SPRING, INLET	3
20	7105963	TNM	ROD, CONNECTING ASSY	1	169	N/A	PVDF	RETAINER, SPRING, DISCHARGE	3
24	7105964	LDPE	PLUG, OIL CAP	3	172	N/A	NBR	O-RING, VALVE PLUG	3
25	7105965	FCM	CRANKSHAFT, 3450 RPM, 1", 8.0MM	1	174	7103836	BB	PLUG, VALVE	3
-	7105966	FCM	CRANKSHAFT, 3450 RPM, 3/4" 8.8MM	1	185	7105773	FBB	HEAD, MANIFOLD W/ INTRGRAL UNLOADER BODY	1
26	7102592	STL	RING, RETAINING	1	188	7103838	STZP	SCREW	8
27	7102678	STL	BEARING, BALL, OUTER	1	249	7105974	-	MOUNT, ADAPTER ASSY, GAS	1
32	7102604	RTP	CAP, OIL FILLER	1	-	-	-	FLANGE ADAPTER	1
33	7102617	NBR	O-RING, OIL FILLER	1	-	-	-	SCREW	4
37	7103056	-	GUAGE, OIL BUBBLE	1	-	-	-	KEY, 1/4" SQ X 2-1/2"	1
38	7102970	NBR	GASKET, OIL GUAGE	1	-	-	-	SCREW, SET	1
48	7101762	NY	PLUG, DRAIN	1	249	7105975	-	MOUNT, ADAPTER ASSY, ELECTRIC	1
49	7102617	NBR	O-RING, DRAIN PLUG	1	-	-	-	FLANGE ADAPTER	1
53	7105967	AL	CRANKCASE	1	-	-	-	SCREW	4
64	7105968	CM	PIN, CROSS HEAD	3	-	-	-	KEY, 3/16" SQ X 1-1/2"	1
65	7105969	BB	ROD, PLUNGER	3	-	-	-	SCREW, SET	1
69	7105970	STCP R	WASHER, OIL SEAL	3	255	7105977	-	MOUNT, BOLT, ASSY	1
70	7103113	NBR	SEAL, OIL	3	-	-	-	WASHER, FLAT	4
90	7103542	CC	PLUNGER	3	-	-	-	LOCKWASHER	4
98	N/A	NBR	WASHER, SEAL	3	-	-	-	SCREW	4
99	7105833	S	RETAINER, PLUNGER	3	-	-	-	LUBRICANT, ANITSEIZE	1
100	7105971	PVDF	RETAINER, SEAL	3	299	7105978	FBB	HEAD COMPLETE (106-188)	1
106	N/A	NBR	SEAL, LPS	3	300	7105979	NBR	KIT, SEAL (98, 106, 121, 127, 128)	1
120	7105972	BB	CASE, SEAL	3	310	7103540	NBR	KIT, VALVE (160-164, 167-169, 172)	1
121	N/A	NBR	O-RING, SEAL CASE	3	400	N/A	-	UNLOADER	1
127	N/A	SNC	V-PACKING	3	469	7101616	-	INJECTOR, CHEMICAL FIXED	1
128	N/A	PVDF	ADAPTER, MALE	3					
160	N/A	NBR	O-RING, INLET SEAT	3					
161	N/A	S	SEAT, INLET	3					
162	N/A	D	BACK-UP RING, DISCHARGE SEAT	3					

MATERIAL CODES ARE NOT PART OF NUMBERS: AL=Aluminum, BB=Brass, CC=Ceramic, CM=chrome-Moly, LDPE=Low Density Polyethylene, BR=Medium Nitrile (Buna-N), NY=Nylon, PVDF=Polyvinylidene Fluoride, RTP=Reinforced Composite, S=304SS, SNG=Special Blend (Buna) STCP=Steel/Chrome Plated, STZP=Steel/Zinc Plated, TNM=Special High Strength

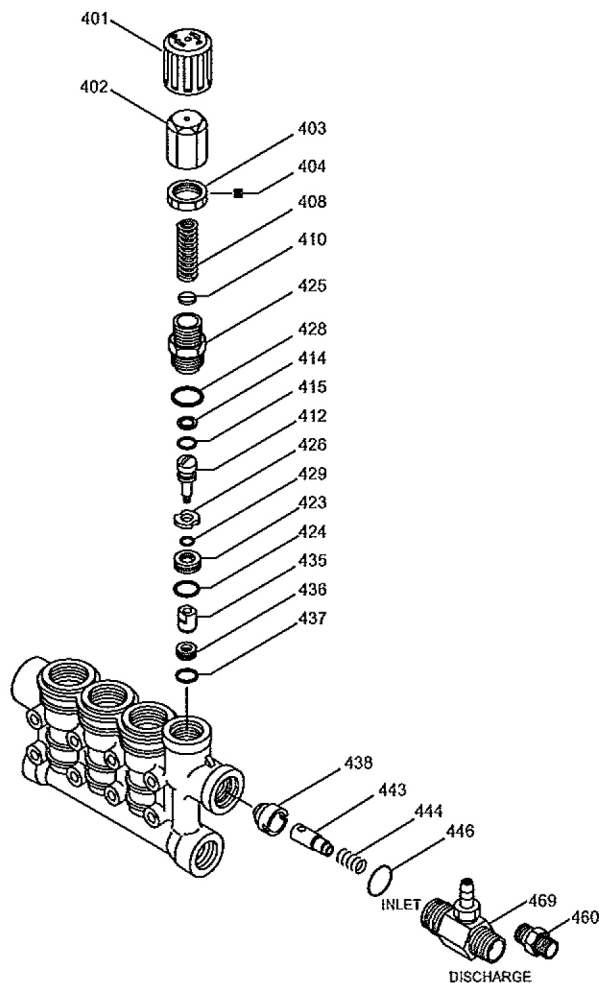
NOTE: DISCARD KEY WHICH MAY COME STANDARD WITH MOST ENGINES AND USE ONLY THE KEY INCLUDED IN THIS KIT.

FNA-GROUP REV A SHEET 1 OF 2

DC12-0089

INTEGRAL UNLOADER

Specifications	U.S. Measure	Metric Measure
Flow.....	3.5 GPM	(13.2 L/M)
PSI Range.....	100-3000 PSI	(7-210 BAR)
Discharge Port	M18 x 1.0	(M18 x 1.0)



PARTS LIST

ITEM	PART NO.	MATL	DESCRIPTION	QTY
401	7105976	NY	HANDLE, ADJUSTING	1
402	7103842	BB	CAP, ADJUSTING	1
403	7105980	BB	NUT, LOCK	1
404	7105981	STL	SCREW, SET	1
408	7103544	STZP	SPRING, PRESSURE	1
410	7103427	STZP	RETAINER, SPRING	1
412	N/A	S	STEM, PISTON	1
414	N/A	PTFE	BACK-UP RING, PISTON STEM	1
415	N/A	NBR	O-RING, PISTON STEM	1
423	N/A	BB	RETAINER, VALVE	1
424	N/A	NBR	O-RING, VALVE RETAINER (OUTER)	1
425	N/A	BB	RETAINER, PISTON	1
426	N/A	S	WASHER	1
428	N/A	NBR	O-RING, PISTON RETAINER	1
429	N/A	NBR	O-RING, VALVE RETAINER (INNER)	1
435	N/A	S	VLAVE	1
436	7105982	S	SEAT	1
437	7105983	NBR	O-RING SEAT	1
438	7105984	NY	SEAT	1
443	7105985	BB	VALVE, CHECK WITH O-RING	1
444	7103048	S	SPRING, CHECK VALVE	1
446	7103851	NBR	O-RING, BODY	1
460	7102590	BB	FITTING DISCHARGE	1
468	7103541	NBR	KIT, O-RING (414, 424, 428, 429, 437, 446)	1
469	7101616	BB	INJECTOR, FIXED CHEMICAL	1

UNLOADER TYPE

An integral unloader with built-in by-pass is part of the discharge manifold to provide system pressure regulation and pump protection. This pump also includes a fixed chemical injector for chemical application.

OPERATION:

Pump should be purged of air before commencing with operation. Liquid must flow through the pump only to assure full system pressure is reached.

Install a pressure gauge close to the manifold head of the pump to assist in setting system pressure and to periodically monitor system pressure.

Setting and adjusting the unloader pressure must be done with the system turned on. Start the system with the unloader backed off to the lowest pressure setting (counterclockwise direction). Squeeze the trigger and read the pressure on the gauge at the pump. Do not read pressure at the gun or nozzle. If more pressure is desired, release the trigger, turn adjusting cap one quarter turn in a clockwise direction. Squeeze the trigger and read the pressure. Repeat this process until the desired system pressure is reached. Thread locking nut up to adjusting cap and tighten set screw.

NOTE: Pressure is not set at the factory.

SERVICE:

The unloader should be serviced on the same schedule as the seals in the pump. Refer to 3SPX Service Manual for start-up, servicing of seals and valves, torque requirements and diagnosis and maintenance chart.

7332 FIXED CHEMICAL INJECTOR

SPECIFICATIONS	U.S. Measure	Metric Measure
Flow.....	3.5 GPM	(13.2 L/M)
Nozzle Orifice.....	2.1 mm	(2.1 mm)
Hose Barb	1/4"	(1/4")
Tapped Barb	8/32" UNF	(8/32" UNF)
Inlet Port	M18x1.0	(M18x1.0)
Discharge Port	3/8" NPTM	(3/8" NPTM)
Weight	5.3 oz.	(0.15 kg)
Dimensions	2 x 1 x 1.75"	(52 x 25 x 45 mm)

CHEMICAL INJECTOR PERFORMANCE CHART

Desired Pump Flow	Orifice Size	Injector Model	Maximum Injecting Pressure	Maximum Chemical Draw	Pressure Drop Across Injector At System Pressure (3000 PSI)
3.0	2.1 mm	7332	163 PSI	35.5 oz/min	200 PSI
3.5	2.1 mm	7332	200 PSI	45.6 oz/min	258 PSI

Optimum performance of chemical injector occurs with a 35 ft. high pressure hose and a minimum 3/8" I.D. The type of hose, extended lengths, reduced I.D. and fittings may create back pressures in excess of the low pressure nozzle rating and prevent the injector from drawing chemical. See Hose Friction Loss Chart in Service Manual. Deduct hose friction loss from above low PSI Nozzle. Contact CAT PUMPS for assistance with other options.

CAUTION: Deduct the pressure drop shown in the performance chart from your desired system pressure to arrive at the maximum high pressure nozzle rating. This is essential to avoid over-pressurizing the pump.