

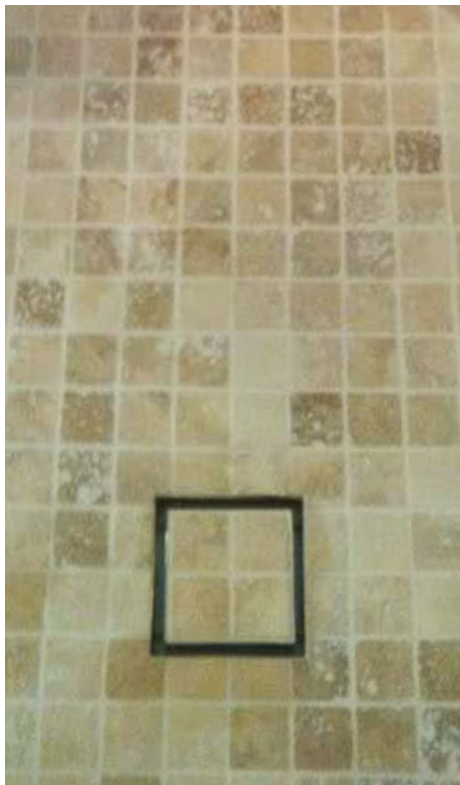


MODERN DESIGN LINEAR DRAINS

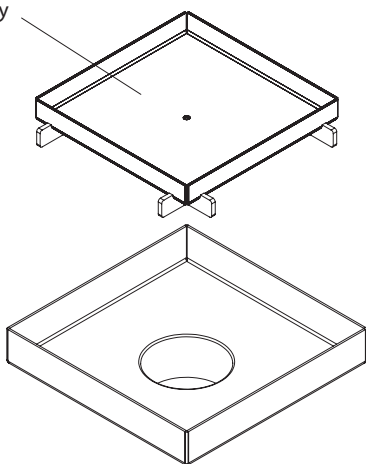
LUXE innovative products are designed and manufactured in marine-grade stainless steel - a classic material that stands the aesthetic and functional test of time.

LUXE stainless steel tile drain solutions provide the newest design elements in shower drains. By adding your own tile you create a seamless shower floor that is sure to impress.

LUXE stainless steel tile drains are designed to be compatible with all bathroom floor drains and independent of all waterproofing methods and procedures.



Removable Tile Tray for Easy Cleaning



#### KEY BENEFITS

- ▶ Fits all standard 2" or 3" floor drains
- ▶ Accepts most tile, stone or other flooring material
- ▶ Utilize large format tile or slab flooring, less tile cuts = lower labor costs
- ▶ Low Maintenance – removable tile tray is easily cleaned and sterilized
- ▶ Stainless Steel: Recyclable, Durable, Corrosion Resistant

#### TYPICAL APPLICATIONS

- ▶ Residential: New Construction, Remodel, Renovations
- ▶ Hospitality: Resorts, Hotels, Clubhouses, Gyms, Spas
- ▶ Healthcare Facilities: Hospitals, Senior Living / Retirement Communities
- ▶ Pools, Showers, Driveways, Balconies, Commercial Kitchens, Storm Drainage
- ▶ Universities, Office Buildings, Industrial

