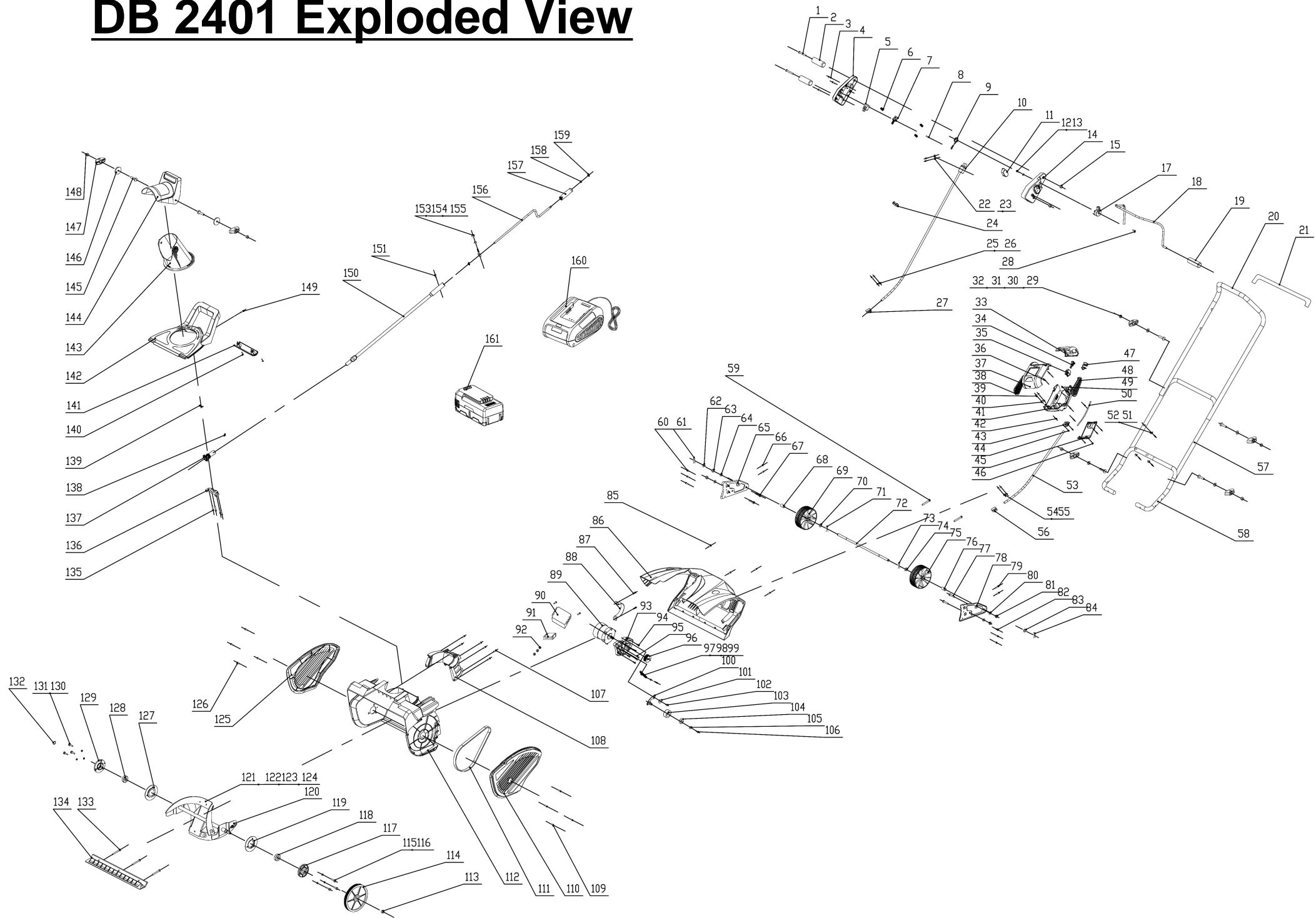


DB 2401 Exploded View



DB 2401 Parts List

| Item | Stock # | Description | Qty | Cost |
|------|------------|---------------------|-----|---------|
| 1 | 303020242 | Screw M6x45 | 2 | \$ 0.15 |
| 2 | 203020339 | Spacer | 2 | \$ 0.05 |
| 3 | 303010027 | Screw ST4.2x16 | 3 | \$ 0.05 |
| 4 | 203050020A | Switch Housing R | 1 | \$ 0.46 |
| 5 | 301100028 | Switch | 1 | \$ 1.53 |
| 6 | 303130112 | Spring | 3 | \$ 0.05 |
| 7 | 203020059 | Switch Fixing Plate | 1 | \$ 0.05 |
| 8 | 303123002 | Cylindrical Pin | 1 | \$ 0.05 |
| 9 | 303130060A | Spring | 1 | \$ 0.15 |
| 10 | | Cable | 1 | \$ 1.23 |
| 11 | 203020417 | Switch Button | 1 | \$ 0.15 |
| 12 | 303010104 | Screw ST4.2x8 | 1 | \$ 0.05 |
| 13 | 303042128 | Flat Washer 6 | 1 | \$ 0.05 |
| 14 | 203050023 | Switch Housing L | 1 | \$ 0.61 |
| 15 | 303030032 | Locknut M6 | 2 | \$ 0.05 |
| 17 | 203020418B | Switch Trigger | 1 | \$ 0.31 |
| 18 | 303080099 | Handle Bar | 1 | \$ 1.38 |
| 19 | 203020060 | Sleeve | 1 | \$ 0.05 |
| 20 | 303080104C | Upper Handle | 1 | \$ 2.91 |
| 21 | 302020008 | Sponge Tube | 1 | \$ 0.92 |
| 22 | 203020047 | Cable Keeper | 1 | \$ 0.05 |
| 23 | 303010027 | Screw ST4.2x14 | 2 | \$ 0.05 |
| 24 | 203020065 | Clip | 2 | \$ 0.05 |
| 25 | 203020047 | Cable Keeper | 1 | \$ 0.05 |
| 26 | 303010027 | Screw ST4.2x16 | 2 | \$ 0.05 |
| 27 | 302110080 | Plug | 1 | \$ 0.15 |
| 28 | 303020077 | Screw M4x10 | 1 | \$ 0.05 |
| 29 | 303020461 | T-bolt M8x50 | 4 | \$ 0.15 |
| 30 | 303043010 | Saddle Washer 8 | 6 | \$ 0.05 |
| 31 | 203020865A | Knob | 4 | \$ 0.15 |
| 32 | 303030026 | Nut M8 | 4 | \$ 0.05 |
| 33 | 203030004 | Battery Cover | 1 | \$ 0.61 |
| 34 | 203021264 | Safety Key | 1 | \$ 0.15 |
| 35 | 301100052 | Safety Switch | 1 | \$ 1.23 |
| 36 | 303010011 | Screw ST2.9x8 | 4 | \$ 0.05 |
| 37 | 203010785 | Upper Cover | 1 | \$ 0.61 |
| 38 | 203010786 | Right Cover | 1 | \$ 0.46 |
| 39 | 303010027 | Screw ST4.2x14 | 2 | \$ 0.05 |
| 40 | 203020047 | Cable Keeper | 1 | \$ 0.05 |
| 41 | 203010787 | Lower Cover | 1 | \$ 0.77 |
| 42 | 303010028 | Screw ST4.2x18 | 4 | \$ 0.05 |
| 43 | 203021266 | Bracket | 1 | \$ 0.77 |
| 44 | 303010104 | Screw ST4.2x8 | 2 | \$ 0.05 |
| 45 | 203010788 | Bottom Bracket | 1 | \$ 0.31 |
| 46 | 303010104 | Screw ST4.2x8 | 4 | \$ 0.05 |
| 47 | 303130122 | Spring | 1 | \$ 0.15 |
| 48 | 203010789 | Left Cover | 1 | \$ 0.46 |
| 49 | 303010027 | Screw ST4.2x14 | 1 | \$ 0.05 |
| 50 | 301040147 | Cable | 1 | \$ 0.77 |
| 51 | 303010144 | Screw ST4.8x20 | 3 | \$ 0.05 |
| 52 | 303043009 | Saddle Washer | 3 | \$ 0.05 |
| 53 | | Power Cord | 1 | \$ 1.84 |
| 54 | 203020047 | Cable Keeper | 1 | \$ 0.05 |
| 55 | 303010226 | Screw ST4.2x16 | 2 | \$ 0.05 |

| Item | Stock # | Description | Qty | Cost |
|------|------------|---------------------|-----|---------|
| 56 | 302110080 | Plug | 1 | \$ 0.15 |
| 57 | 303080403 | Middle Handle | 1 | \$ 1.99 |
| 58 | 303080404 | Lower Handle | 1 | \$ 1.84 |
| 59 | 303010310 | Screw ST6.3x35 | 2 | \$ 0.05 |
| 60 | 303010027 | Screw ST4.2x14 | 3 | \$ 0.05 |
| 61 | 303121005 | Cotter Pin | 1 | \$ 0.05 |
| 62 | 303042039 | flat Washer 10 | 1 | \$ 0.05 |
| 63 | 303030032 | Locknut M6 | 2 | \$ 0.05 |
| 64 | 303042011 | flat Washer 6 | 2 | \$ 0.05 |
| 65 | 303070044 | Left Wheel Bracket | 1 | \$ 0.77 |
| 66 | 303010027 | Screw ST4.2x14 | 2 | \$ 0.05 |
| 67 | 303020308 | Screw M6x30 | 2 | \$ 0.05 |
| 68 | 303160025 | Spacer | 1 | \$ 0.15 |
| 69 | 203050004 | Wheel | 1 | \$ 0.61 |
| 70 | 303042039 | Flat Washer 10 | 1 | \$ 0.05 |
| 71 | 303121005 | Cotter Pin | 1 | \$ 0.05 |
| 72 | 303160009A | Wheel Axle | 1 | \$ 1.23 |
| 73 | 303121005 | Cotter Pin | 1 | \$ 0.05 |
| 74 | 303042039 | Flat Washer 10 | 1 | \$ 0.05 |
| 75 | 203050004 | Wheel | 1 | \$ 0.77 |
| 76 | 303160025 | Spacer | 1 | \$ 0.15 |
| 77 | 303020308 | Screw M6x30 | 2 | \$ 0.05 |
| 78 | 303070034 | Right Wheel Bracket | 1 | \$ 0.77 |
| 79 | 303010027 | Screw ST4.2x14 | 2 | \$ 0.05 |
| 80 | 303042011 | Flat Washer 6 | 2 | \$ 0.05 |
| 81 | 303030032 | Locknut M6 | 2 | \$ 0.05 |
| 82 | 303010027 | Screw ST4.2x14 | 3 | \$ 0.05 |
| 83 | 303042039 | Flat Washer 10 | 1 | \$ 0.05 |
| 84 | 303121005 | Cotter Pin | 1 | \$ 0.05 |
| 85 | 303010028 | Screw ST4.2x18 | 4 | \$ 0.05 |
| 86 | 203010329B | Motor Cover | 1 | \$ 3.07 |
| 87 | 303010226 | Screw ST4.2x16 | 4 | \$ 0.05 |
| 88 | 303070963 | Motor Bracket | 1 | \$ 0.46 |
| 89 | 301030074 | Motor | 1 | \$27.61 |
| 90 | 301080032 | Controller | 1 | \$13.80 |
| 91 | 303090065 | Connecting Base | 1 | \$ 0.46 |
| 92 | 303030030 | Nut | 3 | \$ 0.05 |
| 93 | 203021267 | Bracket | 1 | \$ 0.46 |
| 94 | 303020464 | Screw M4x12 | 3 | \$ 0.05 |
| 95 | 303010027 | Screw ST4.2x14 | 3 | \$ 0.05 |
| 96 | 303060005 | Small Pulley | 1 | \$ 0.92 |
| 97 | 303130019 | Spring | 1 | \$ 0.15 |
| 98 | 303042019 | Flat Washer 4 | 1 | \$ 0.05 |
| 99 | 303010027 | Screw ST4.2x14 | 1 | \$ 0.05 |
| 100 | 303070469 | Pulley Bracket | 1 | \$ 0.61 |
| 101 | 303042080 | Flat Washer 5 | 1 | \$ 0.05 |
| 102 | 303010108 | Screw ST4.8x16 | 1 | \$ 0.05 |
| 103 | 203020077 | Pulley | 1 | \$ 0.15 |
| 104 | 303100016 | Bearing 6000Z | 1 | \$ 0.61 |
| 105 | 303042035 | Flat Washer 5 | 1 | \$ 0.05 |
| 106 | 303020077 | Screw M4x10 | 1 | \$ 0.05 |
| 107 | 303010027 | Screw 4.2x14 | 6 | \$ 0.05 |
| 108 | 203010018 | Upper Housing | 1 | \$ 1.07 |
| 109 | 303010026 | Screw ST4.2x12 | 4 | \$ 0.05 |

| Item | Stock # | Description | Qty | Cost |
|------|------------|----------------------|-----|----------|
| 110 | 203010071A | Left Cover | 1 | \$ 1.69 |
| 111 | 302040024 | Belt 5PJ670 | 1 | \$ 1.53 |
| 112 | 203050002A | Base | 1 | \$ 5.37 |
| 113 | 303030047 | Nut M8 (Left Hand) | 1 | \$ 0.05 |
| 114 | 203060009A | big Pulley | 1 | \$ 1.07 |
| 115 | 303020085 | Screw M6x20 | 3 | \$ 0.05 |
| 116 | 303041009 | Washer 6 | 3 | \$ 0.05 |
| 117 | 303090003 | Bearing Coupler | 1 | \$ 0.77 |
| 118 | 303100009 | Bearing 6202Z | 1 | \$ 0.77 |
| 119 | 303180001 | Roller Fixed Plate | 1 | \$ 0.46 |
| 120 | 303180884 | Roller Spindle | 1 | \$ 4.60 |
| 121 | 203090011 | Rubber Blade | 2 | \$ 1.69 |
| 122 | 303020087 | Screw M6x25 | 10 | \$ 0.05 |
| 123 | 303042042 | Flat Washer 6 | 10 | \$ 0.05 |
| 124 | 303030087 | Nut M6 | 10 | \$ 0.05 |
| 125 | 203010062 | Right Cover | 1 | \$ 1.53 |
| 126 | 303010026 | Screw ST4.2x12 | 4 | \$ 0.05 |
| 127 | 303180001 | Roller Spindle | 1 | \$ 0.46 |
| 128 | 303100009 | Bearing 6202Z | 1 | \$ 0.77 |
| 129 | 303090003 | Bearing Coupler | 1 | \$ 0.77 |
| 130 | 303020085 | Screw M6x20 | 3 | \$ 0.05 |
| 131 | 303041009 | Washer 6 | 3 | \$ 0.05 |
| 132 | 303050031 | Washer | 1 | \$ 0.05 |
| 133 | 303010142 | screw ST4.2x18 | 3 | \$ 0.05 |
| 134 | 203020040A | Scraper | 1 | \$ 1.84 |
| 135 | 303010142 | Screw ST4.2x18 | 4 | \$ 0.05 |
| 136 | 203060015 | Bracket | 1 | \$ 0.31 |
| 137 | 203060005A | Chute Direction Gear | 1 | \$ 0.31 |
| 138 | 303010026 | Screw ST4.2x12 | 1 | \$ 0.05 |
| 139 | 303130323 | Spring | 1 | \$ 0.15 |
| 140 | 303010027 | Screw ST4.2x14 | 2 | \$ 0.05 |
| 141 | 203010009 | Chute Base Bar | 1 | \$ 0.15 |
| 142 | 203010014B | Chute Base | 1 | \$ 1.84 |
| 143 | 203010048A | Chute | 1 | \$ 0.92 |
| 144 | 203050012A | Chute Deflector | 1 | \$ 0.77 |
| 145 | 303020152 | Screw M8x30 | 2 | \$ 0.15 |
| 146 | 302080004 | Rubber Washer | 2 | \$ 0.15 |
| 147 | 203020336A | Knob M8 | 2 | \$ 0.31 |
| 148 | 303030026 | Nut M8 | 2 | \$ 0.05 |
| 149 | 303010027 | Screw ST4.2x14 | 1 | \$ 0.05 |
| 150 | 202290008 | Lower Crank Handle | 1 | \$ 0.92 |
| 151 | 303020316 | Screw M4x14 | 1 | \$ 0.05 |
| 153 | 303042011 | Flat Washer 6 | 1 | \$ 0.05 |
| 154 | 303030032 | Nut M6 | 1 | \$ 0.05 |
| 155 | 303070016 | Eye Bolt | 1 | \$ 0.31 |
| 156 | 303160029A | Upper Crank Handle | 1 | \$ 0.77 |
| 157 | 203020051 | Crank Handle Tube | 1 | \$ 0.46 |
| 158 | 303042105 | Flat Washer 8 | 1 | \$ 0.05 |
| 159 | 303050008 | Washer | 2 | \$ 0.05 |
| 160 | 202470005 | Charger | 1 | \$ 17.64 |
| 161 | 202460002 | Battery | 1 | \$ 10.74 |