

Fasade® Panel Installation Guide

Guía Fasade® Panel Instalación | Guide de Pose des Panneaux Fasade®

18" x 24" Backsplash Panels

18" x 24" Paneles de tablero | Panneaux pour Dosserets 18" x 24" (45.7cm x 61cm)



To see installation videos and for more information visit Fasadeideas.com

Para ver videos de instalación y para obtener más información, visite Fasadeideas.com | Pour visionner des vidéos de pose et pour plus d'information, visitez le Fasadeideas.com

Or call Customer Service (800) 434-3750

For all Loctite® Adhesive Technical Information call (800) 624-7767

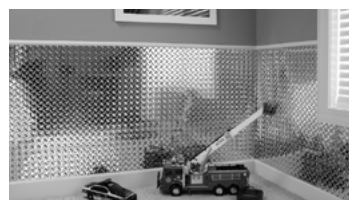
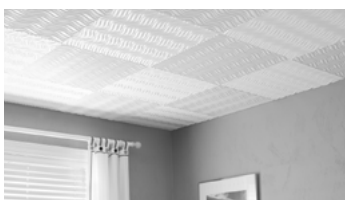
O llame al Servicio de Atención al Cliente (800) 434-3750 • Para todo el Loctite® Información Técnica adhesiva llamada (800) 624-7767

Ou appelez le service à la clientèle (800) 434-3750 • Pour infos techniques concernant les adhésifs Loctite/Lepage (800) 624-7767

ACP, 555 W Bell St, Neenah, WI 54956 • Made in USA | Fabricado en EE.UU | Fabriqué aux É.U

More Fasade applications... | Más aplicaciones Fasade... | Autres applications Fasade...

Ceiling Panels, Wall Panels | Azulejos de techo, Paneles de pared | Tuiles pour Plafond, Panneaux Muraux



2' x 2' Glue-Up | Para pegar | à Coller au Plafond

2' x 4' Glue-Up | Para pegar | à Coller au Plafond

2' x 2' & 2' x 4' Lay-In | Poner en | Pour Plafond Suspendu

4' x 8' Wall Panels | Poner en | Panneaux Muraux

For more information, please visit Fasadeideas.com | Para obtener más información, visite Fasadeideas.com | Pour plus d'information, visitez le Fasadeideas.com

18" x 24" Backsplash Panels

Backsplash

18" x 24"

All backsplash styles have the 1/2" Flap Lip for Overlapping Connection.

READ this entire installation guide before beginning your installation

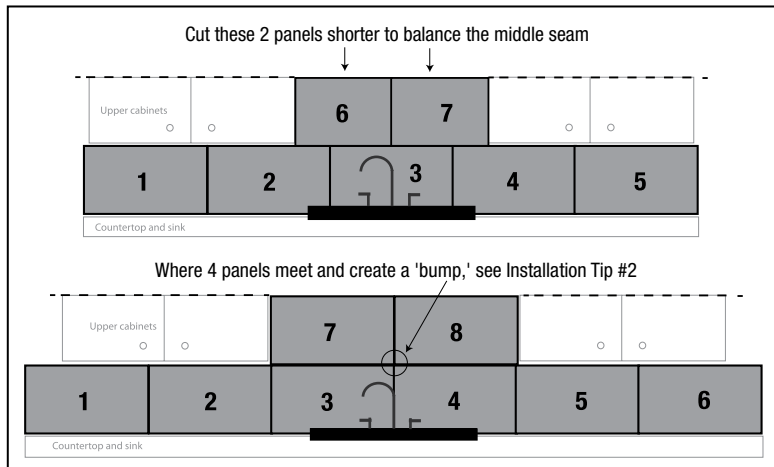
PREPARATION BEFORE INSTALLATION BEGINS

1) Finish the edge under cabinets. Before installation, paint the wall area just under the cabinet to match the darkest color in the panel finish. This will hide any areas where a small, thin area of wall is exposed due to the panel not fitting perfectly along the entire cabinet's bottom edges. Or use Edge J-Trim along the top edge of the panels where it meets the bottom of the cabinets. The trim can be adjusted to butt perfectly along the bottom edge of the cabinets.

2) Clean surfaces. Before starting, make sure all surfaces are clean, dry, flat, smooth and free from dust, grease, etc. Lightly sand any glossy surfaces to remove sheen. Clean the back surface of the panels by wiping with a clean cloth and rubbing alcohol. **Refer to adhesive manufacturer's directions.** Use rubbing alcohol in a well-ventilated area away from ignition sources.

3) Dry layout. See examples below for 2 possible layout options. Layout depends greatly on space and panel style chosen. These examples also call out the "bump" occasionally created by overlapped panels, see Installation Tips #3 for more information.

Work from bottom left. Start from the left side at the bottom and work either upwards or to the right. An exception to this rule would be designing a layout of panels to be centered at a focal point, such as behind a sink or stove area, then build out from both sides of the focal point.

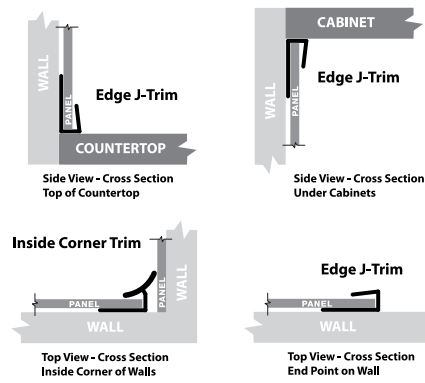


4) Cutting the panels. Once layout is determined, measure and cut the backsplash panels to size.

5) Finish the edges. If the area to be covered ends on a flat wall, and you desire to finish the cut edge of the last panel, use a piece of matching Edge J-Trim. This trim piece slides over the cut edge of the panel. Also, if you have an inside corner, it is recommended you use a piece of matching Inside Corner Trim. (See trim profile drawings at right). You should slide the J-trim and corner trims onto the edge of the panel before beginning your backsplash panel installation.

Note: Instead of using trim, you can also finish your edges with caulk.

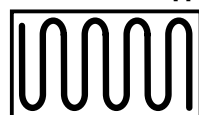
Trim Profile Drawings. Available in 18" and 4' lengths



INSTALLATION USING TUBE ADHESIVE

1) Installing your first panel. If you have not done so, clean the back side of each panel using isopropyl alcohol and a paper towel or cloth. Make sure the first panel you intend to install fits. Slide trim piece onto edge of panel. Apply adhesive to the back of the first panel. The recommended

Tube Adhesive Application



Back side of panel showing adhesive pattern. Apply 1" from edges so excess clean up is not necessary.

Tools and items you will need:



adhesive is Loctite PL Premium or PL Premium Fast Grab. **Carefully read and follow adhesive manufacturer's directions.** Apply panel adhesive according to previous drawing, using approximately a 1/8" to 3/16" bead. The 10 oz. adhesive tube covers approximately 4 backsplash panels.

2) Squeeze out trapped air. Place panel and press against substrate using a soft cloth to apply pressure firmly and evenly across the panel and squeeze out excess air.

3) Wipe off excess adhesive. Use water or mineral spirits and a cloth. Clean off any adhesive residue that is visible while it is still wet. Do not allow this residue to dry as it will be very hard to clean up when dry and could damage the finish.

4) Finish installing your panels. Add additional panels in the same fashion.

INSTALLATION USING DOUBLE-SIDED TAPE

1) Installing your first panel. If you have not done so, clean the back side of each panel using isopropyl alcohol and a paper towel or cloth. Make sure the first panel you intend to install fits. Slide trim piece onto edge of panel, if using trims.

2) Apply adhesive strips. Apply three horizontal strips of tape: one on top, one on the middle and one on the bottom of the panel, or apply tape to wall. Do not remove liner on tape yet. **Note:** Carefully locate each panel location prior to installation as the adhesive tape is very aggressive.

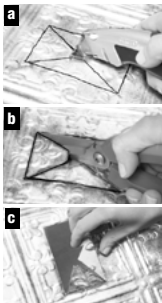
3) Remove liner from tape and install first panel. Remove liner from top layer of tape strips to expose the sticky adhesive surface. Apply first panel, press firmly into place when alignment is correct.

4) Bond overlap areas. Add a few 1" x 1" squares of tape to the overlap area of each panel to bond the overlap tightly.

5) Finish installation. Continue to add panels in this fashion until complete.

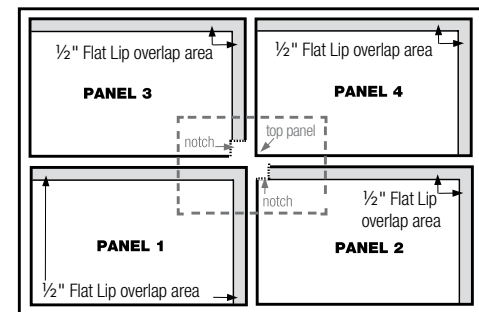
INSTALLATION TIPS

1) Cut panels for outlets and light switches. Measure and mark the border of where the opening has to be with a marker. Score along the entire border using a utility knife, making a few passes with a bit more pressure each pass. Then in the center area to be removed, cut a 1/2" to 1" triangular hole all the way through the panel. Next, using sharp scissors or tin snips, cut angled cuts from the edges of the cut triangle to the corners of the border scores. Then carefully bend each corner area along the scores until they break free. *See illustrations to right.*



2) Understand the overlap feature. Prior to installation, it is important to understand the overlap feature of each panel. Each panel has two 1/2" flat edges (the longer flat edge is the top of the panel and shorter flat edge is the right side of the panel). Arrange all panels this way so additional panels can be added to the top or right side of any panel.

Where 4 panels intersect. When overlapping 4 panels, it is necessary to cut a 1/2" notch in panels 2 and 3 to avoid an overlap buildup that causes a "bump." (See drawing at right)



3) Clean only with warm, soapy water. Never use abrasive cleaners. Using a high quality auto polish can help protect the finish.

4) For speeding up cure time, after applying the Loctite PL Premium adhesive to panel, lightly spray the adhesive with a fine mist of clean water after applying to panel. This will help the adhesive cure.

CAUTION: Even though these panels are "Class A" fire rated, they can be deformed with excessive heat. Never expose to heat over 140°F. **Never use** abrasive materials such as scouring pads to clean surface; use only a soft cloth or sponge with mild soap and water.