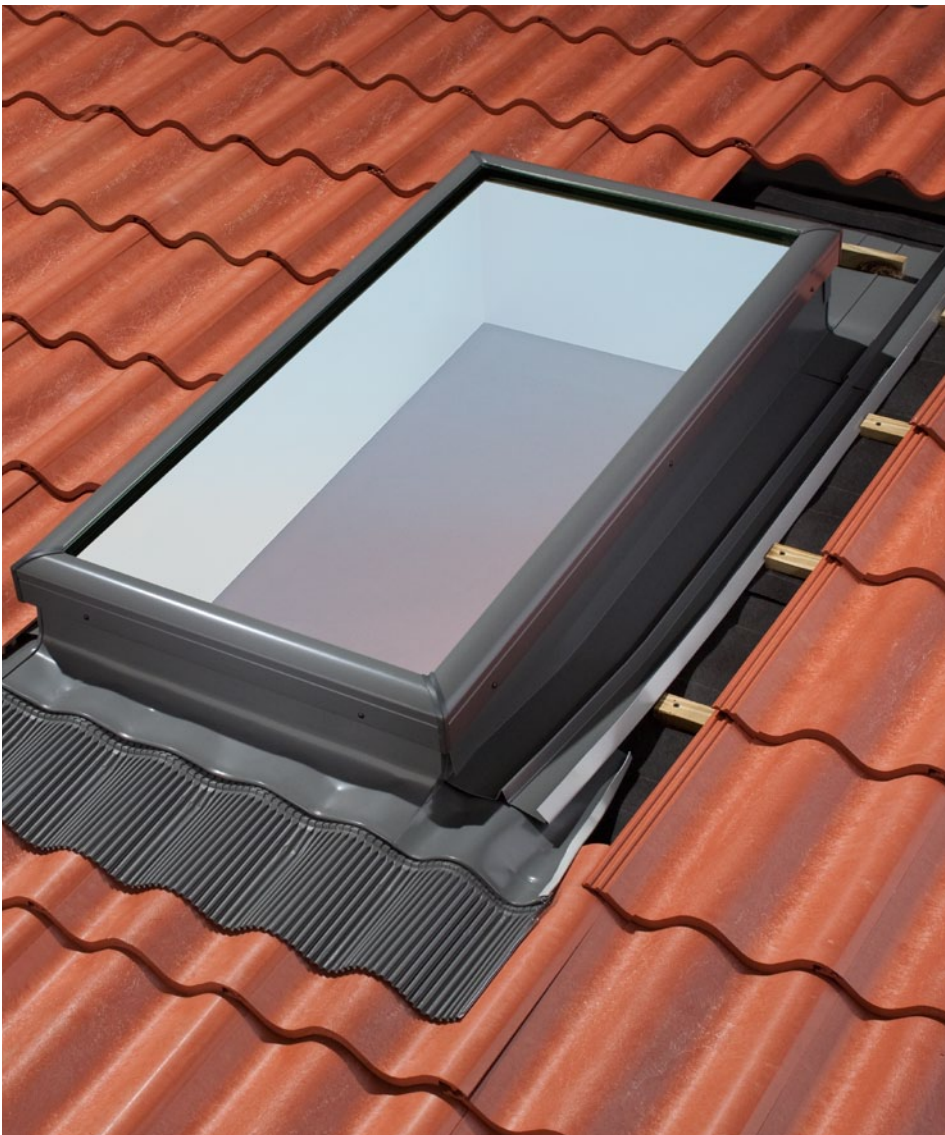


VELUX®

Skylights

Curb tile flashing - ECW

**10-year
installation
warranty**VELUX flashing required
to qualify.

A proven VELUX flashing kit is now made for standard size site-built curbs. ECW tile flashing provides a weathertight seal for standard site built curbs installed on roofs with high profile roofing materials such as concrete or Spanish clay tile.

The ECW is for use with:

- Curb mounted skylights, such as the VELUX FCM, VCM and VCE skylights.
- 2x6 or 2x8 site-built curbs made to standard dimensions.
- Tiles or other high-profile roofing materials on roof pitches from 14° (3:12) - 60° (20:12).



Flexible Design

The ECW comes sized for 2x6 or 2x8 conventional lumber heights (i.e. 5 1/2" or 7 1/4").

The ECW bottom piece is a pleated flexible aluminum apron that molds to the tile to ensure a close fit to a wide range of shapes and sizes.

The ECW side gutters and saddle flashing are designed with extra coverage and up-stand edges to ensure water shedding performance even in extreme weather conditions.

Easy to Install

All ECW components come pre-manufactured to eliminate the hassles and risks of cutting, bending and sealing coil stock material metal on-site.

Peace of Mind

The mechanical seals on the ECW top and bottom corners are precisely constructed and backed by our 10 year product warranty. See the VELUX product warranty for more details.

Sizes

ECW flashing kits are for use with curbs designed for curb mounted skylights of equal width but different lengths as listed below:

Kit width	Kit length
1446	1430 ; 1446
2246	2222; 2230; 2234; 2246
2270	2270
3046	3030; 3046
3434	3434
4646	4646; 4630; 4622 ; 4614