

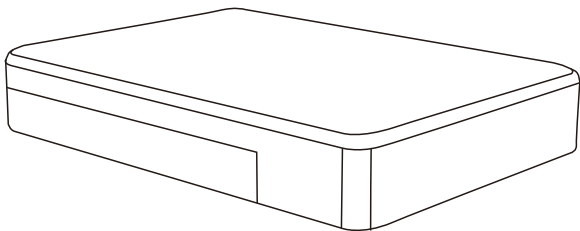
# **Instruction Manual**

## **NVR with Gateway**

Thank you for your support

\*Please read the instruction manual carefully before operation.

\*Please keep the instruction manual for future reference.



# Table of Contents

Product Introduction-----	3
Product functions -----	3
Alarm function-----	3
NVR Function-----	4
Restore to Factory Default Settings -----	4
Technical Parameters-----	4
1. Product hardware-----	5
1.1 Product configuration-----	5
1.2 Product connection-----	5
1.3 Hard disk installation -----	6
2. APP download -----	6
3. Add NVR Gateway-----	6
3.1 Product information -----	7
3.2 The step to add NVR Gateway-----	7
3.3 NVR Gateway Mode-----	8
4.Add Sensors -----	8
4.1 Enter the interface of Add Sensors -----	8
4.2 Add Contact Sensor-----	9
4.3 Add Power Plug-----	10
4.4 Add PIR Motion Sensor-----	11
4.5 Add Smoke Sensor-----	12
4.6 Adding siren alarm-----	13
4.7 Add SOS -----	14
4.8 The sensor linkage -----	15
4.9 Deleting sensor -----	16
5. Adding IP Camera-----	16
5.1 Teaching Steps-----	16
5.2 Camera Other Operation-----	17
5.3 Video Monitoring Picture-----	18
5.4 Camera Wireless Install-----	19
6. Recording-----	20
6.1 Enter the video interface-----	20
6.2 View recording-----	20

6.3 Recording Setting-----	21
7. Alarm event -----	21
8. Setting-----	22
8.1 Enter the setting interface-----	22
8.2 Modify alarm host icon-----	22
8.3 Other settings-----	23
9. Device information -----	24
10.NVR-----	24
10.1NVR function -----	24
10.2 Log in -----	25
11.Add devices-----	25
11.1 Manual Add-----	25
11.2Automatic Add -----	26
12.System Setup-----	27
12.1 Device Information-----	27
12.2 Network Setup-----	27
13.System Information-----	28
13.1 Basic Settings -----	28
13.2 Time Set -----	28
13.3 Disk Management -----	29
13.4 System Maintenance -----	29
14.Channel Information -----	29
14.1Display Setup-----	30
14.2 Video Parameter-----	30
14.3 Audio Parameter-----	31
14.4 Recording Plan-----	31
14.5 IP channel Setup-----	32
15. Image Setup -----	33
16. Video Playback-----	34
17. Pan/Tilt control-----	35
18. Single Image-----	35
19. 4 images-----	36
20. Display Menu bar-----	36
Guarantee-----	37

## **Product Introduction**

The NVR Gateway is a new intelligent security equipment with the function of NVR and Alarm system. The alarm system includes NVR Gateway, alarm sensor, alarm controller and alarm receiver. The devices send information to each other via specific radio frequency. Different countries or regions have different frequency. NVR Gateway is the "brain" of the whole system. The NVR Gateway receives and process the signals from alarm sensors and issues instructions to the alarm controller to control all linked sensors. The NVR Gateway also have the function of NVR, it can display live video and record the video from the cameras. With combination of the two functions (Gateway and NVR), the system provide both function of alarm and surveillance simultaneously.

## **Product functions**

There are two functions for the NVR Gateway; one is alarm function, the other is video recording.

### **Alarm function**

\*The NVR Gateway works as the "brain" of the whole alarm system. It connects with the alarm sensors, alarm controllers and alarm receivers via radio frequency. It takes the responsibilities of signal receiving, processing and issuing instructions.

\*Alarm sensors detect the alarm event and send signals to NVR Gateway, gateway controls the alarm receivers. ( Alarm sensors include Door/Windows sensor, Smoke sensor, PIR motion detection sensor)

\*Alarm controllers can control the alarm receivers through the gateway. Alarm controller includes SOS/Remote control.

\*Alarm receivers is responsible for receiving the signal from the NVR Gateway, and carry out alarm output functions. Alarm receivers include Siren that put out alarm sound and Smart Power Plug that turns off power.

### **NVR Function**

\*The NVR Gateway is with NVR function.

\*There is a RJ-45 Ethernet port on the gateway, which is compatible with 10Mbps and 100Mbps Ethernet speed. It makes the data transmission between the cameras and gateway smooth.

\*There is build-in RF antenna in the gateway, which can send and receive radio frequency from the sensors.

\*With powerful integrated chip, the NVR Gateway supports 8 channel cameras video signal input and one channel video playback.\*There is a SATA interface for external hard disk (Max. 5T)

- \*There is a HDMI interface on the NVR Gateway which can connect with monitor or TV. The maximum resolution of the video display is 1920×1080. With HDMI port, the video from the cameras can be displayed on the HD monitor.
- \*The NVR Gateway has a USB 2.0 interface for mouse and keyboard, which is used for setting menu screen which include storage devices set up and copying files.

## **Restore to Factory Default Settings**

There is a Reset button on the NVR Gateway, it can restore all the data to the default factory setting. Please use with caution.

### **Note**

When the NVR Gateway is being restored to factory settings, please make sure power source is connected.

## **Technical Parameters**

- \*Local Preview: Support PTZ control, multi-split screen
- \*Video input: 8 channel
- \*Video playback: 1 channel
- \*Management functions: support administration and configuration of cameras, disks, and pan/tilt.
- \*Display resolution: 1920×1080, 1280×720
- \*Video Resolution: 1280×720,640×352
- \*Ethernet: RJ-45 interface
- \*Supported Protocol: HTTP/DHCP/IP/TCP/UDP/FTP/SMTP/PPPoE/UPnP
- \*Mobile phone monitor: Support iPhone/iPad/3G phone/smart phone
- \*Wireless range: 50m
- \*Radio frequency: 868.4MHZ EU, 908.4USA; 921.4MHZ ANZ; 869.2MHZ RU
- \*Hard disk interface: SATA×1, 5T Max
- \*USB port: USB 2.0×1
- \*Product size: 140(L) x 130(W) x 29mm (H)
- \*Net weight: 182g/pc
- \*Power supply: DC 5V/2.0A
- \*Power Consumption: 5 Watts (Max)
- \*Work temperature: 0°C~40°C (32°F~104°F)
- \*Work humidity: 20% ~ 85% no condensing
- \*Storage temperature: -10°C ~ 60°C (14°F ~140°F)
- \*Storage humidity: 0% ~ 90% no condensing
- \*Certificate: CE, FCC, RoHS

# 1. Product hardware

## 1.1 Product configuration

NVR Gateway Power plug Smoke sensor Contact sensor



Motion sensor (PIR)



Remote control



Siren alarm



## Product accessories

Power Adapter

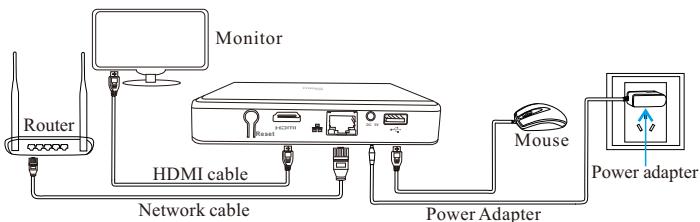


Network Cable



## 1.2 Product connection

Please refer to the photo as bellow when connecting devices



Please check the NVR Gateway if the indicators are in a normal state

Indicator	Type	Normal state
	Power indicator	ON
	Hard disk	Blinking after installation
	Internet cable port indicator	Blinking
	RF indicator	Blinking, blinking faster while pairing

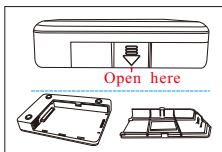
Please check if you connect the devices in a right way if the indicators show abnormally.

## Note

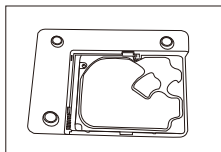
If you do not use the monitor, then don't need to connect the monitor and mouse, which won't affect the NVR Gateway working.

### 1.3 Hard disk installation

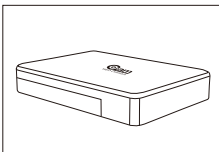
1.Remove the back cover



2.Install hard disk



3.Close the cover



## 2. APP download

\*Users can download directly from website. iOS device download “Coolcamkits” on APP store, Android device download “Coolcamkits” on Google play store.

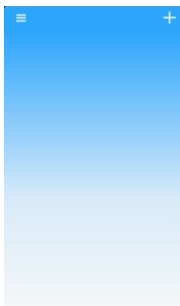
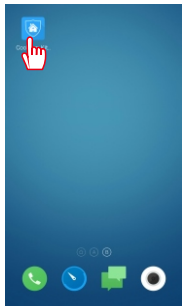
The icon is shown as bellow:



Coolcam kits

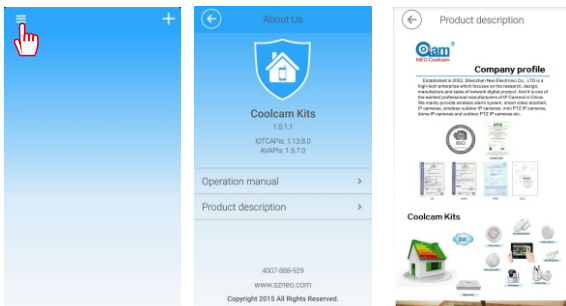
## 3.Add NVR Gateway

Click Coolcam kits icon----Enter Coolcam kits interface



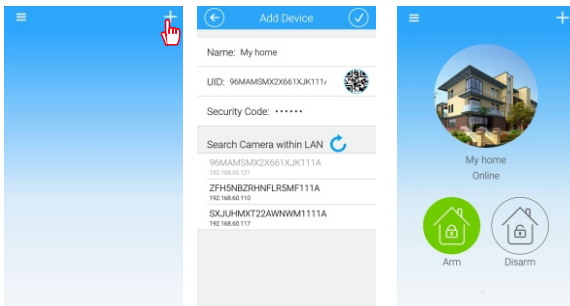
### 3.1 Product information

Click **Coolcam kits** icon and **Coolcam kits** interface will appears. Click the icon on the upper left corner, the interface will display the basic information about the product operation manuals and product brochures.



### 3.2 The step to add NVR Gateway

Click **Coolcam kits** icon, **Coolcam kits** interface will appears, click add icon on the upper right corner. On **NVR Gateway** interface, input the basic information about **NVR Gateway** and click **OK**.



#### Note

1. The default password of NVR Gateway is: admin
2. When adding NVR Gateway on the mobile phone, the smart phone must be in the same network with NVR Gateway, otherwise it is unable to find NVR Gateway.

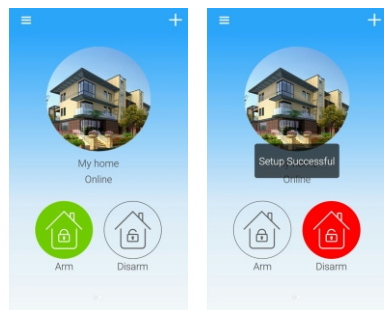


3. When you add NVR Gateway ID, please confirm whether the NVR Gateway UID numbers is the same, otherwise please re-add the UID number.

4. Smart phone app support adding multiple NVR Gateway.

### 3.3 NVR Gateway Mode

Alarm host mode “Arming” and “disarming”



Arming: in arming condition, all devices connected to the NVR Gateway can be linked through the NVR Gateway.

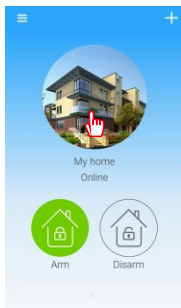
Disarming: in disarming condition, all devices connected to the NVR Gateway can be disconnected through NVR Gateway

**Note: SOS can be linked with NVR Gateway in any condition.**

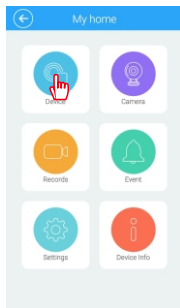
## 4. Add Sensors

### 4.1 Enter the interface of Add Sensors

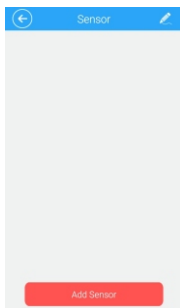
Click NVR Gateway



Click Device



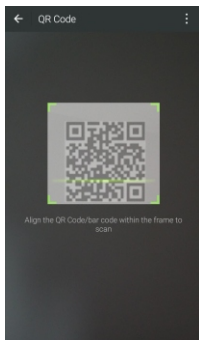
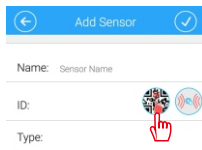
Click Add Sensors



## 4.2 Add Contact Sensor

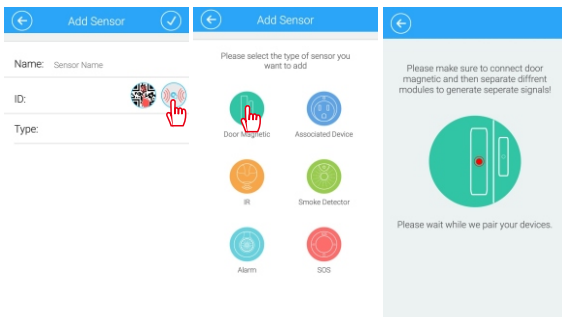
a. Scan QR Code to add the Contact sensor

Click Add Sensors    Click QR code as below to add sensor

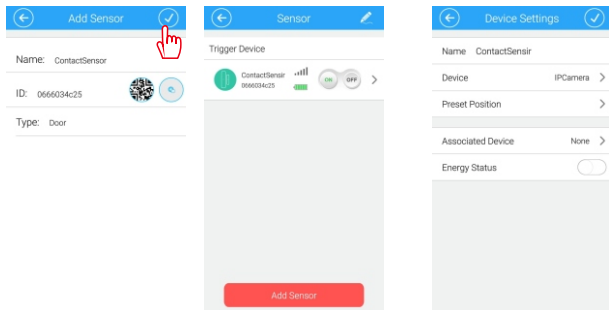


b. Add Contact sensor via mating code

Click "Add sensors"    Click ""    Click "Contact sensor"



b. Input the name of the sensor Click “ ✓ ”

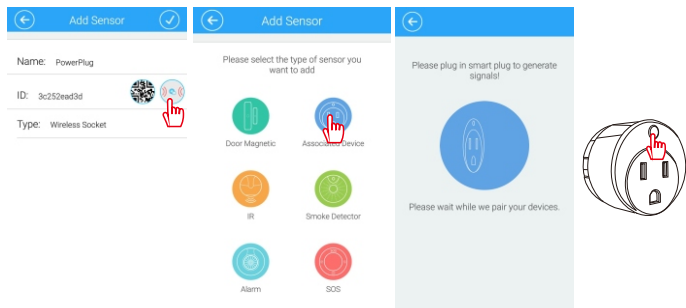


## Note

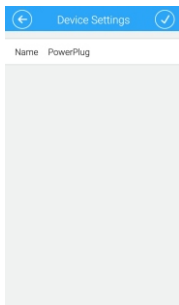
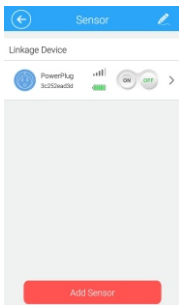
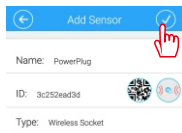
1. After adding the sensor ID, please confirm whether this ID number is as same as the ID number printed on sensor. If not, please add again.
2. The NVR Gateway can add 10 contact sensors at most.

## 4.3 Add Power Plug

a. Click “Add Sensor” Click “ ” --- Click “Power Plug”



b. Input the name of the sensor Click “✔”

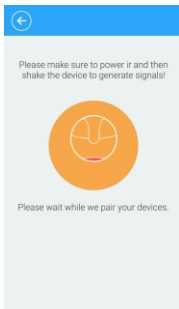
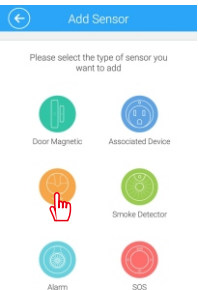
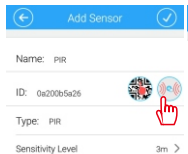


## Note

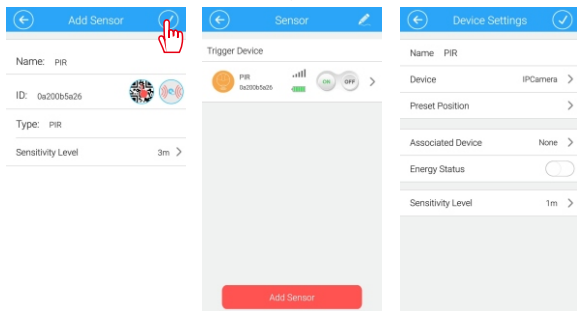
1. After adding the sensor ID, please confirm whether this ID number is as same as the ID number printed on sensor. If not, please add again.
2. The method of Add Power plug by scan QR code is the same as Contact sensor, please refer to 4.2.
3. The NVR Gateway can add up to 10 pcs power plug.

## 4.4 Add PIR Motion Sensor

a. Click “Add Sensor” Click “📶” --- Click “PIR”



## b. Input the sensor name Click“☑”

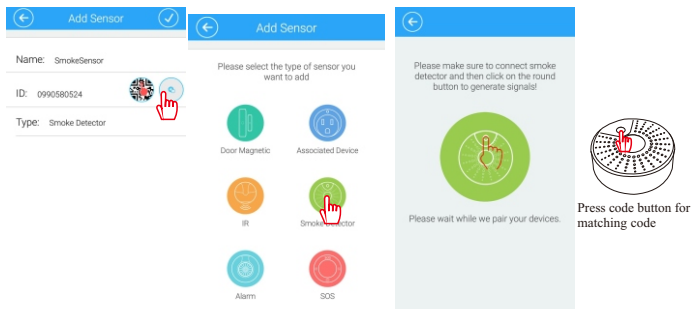


## Note

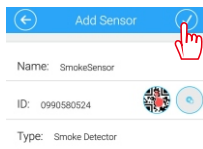
1. After adding the sensor ID, please confirm whether this ID number is as same as the ID number printed on sensor. If not, please add again.
2. The method of Add PIR by scan QR code is the same as Contact sensor, please refer to 4.2.
3. The sensitivity of PIR covers area of PIR detection, only within the detection area, PIR can be triggered, beyond the range of PIR detection, PIR will not be triggered.
4. The gateway can add up to maximum 10 pcs PIR.

## 4.5 Add Smoke Sensor

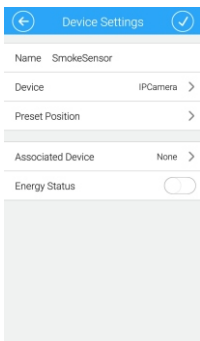
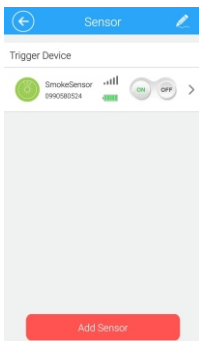
### a. Click “Add Sensor” Click“☑” --- Click “Smoke Sensor”



## b. Input the name of sensor



Click“☑ ”

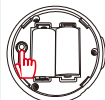
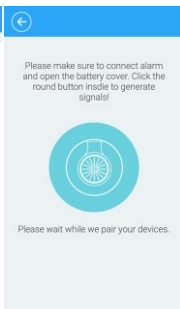
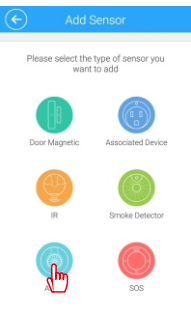
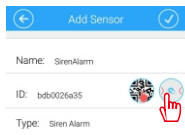


## Note

1. After adding the sensor ID, please confirm whether this ID number is as same as the ID number printed on sensor. If not, please add again.
2. The method of Add Smoke sensor by scan QR code is the same as Contact sensor, please refer to 4.2.
3. The gateway can add up to maximum 10 pcs Smoke sensor.

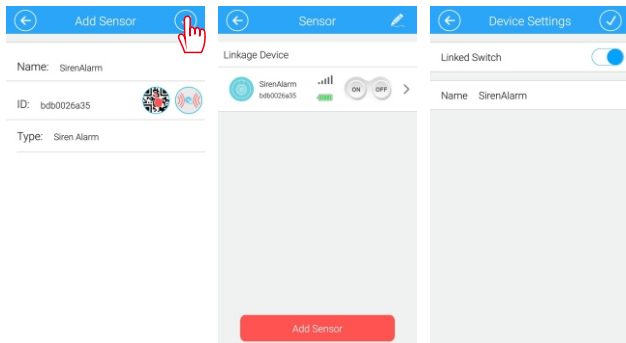
## 4.6 Adding siren alarm

a. Click “Add Sensor” Click“📶” --- Click “Siren alarm”



Click the inside of alarm button for coding

b. Input the name of sensor Click “✓”

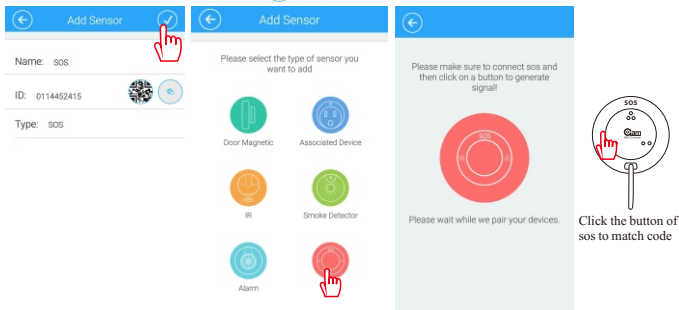


## Note

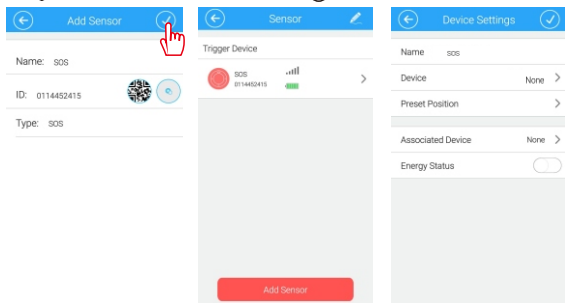
1. After adding the sensor ID, please confirm whether this ID number is as same as the ID number printed on sensor. If not, please add again.
2. The method of Add Siren Alarm by scan QR code is the same as Contact sensor, please refer to 4.2.
3. The siren alarm can be manually controlled to trigger alarm.
4. The NVR Gateway can add up to 2 siren alarms.

## 4.7 Add sos

a. Click “Add Sensor” Click “sos” --- Click “sos”



b. Input the name of sensor Click“☑”



## Note

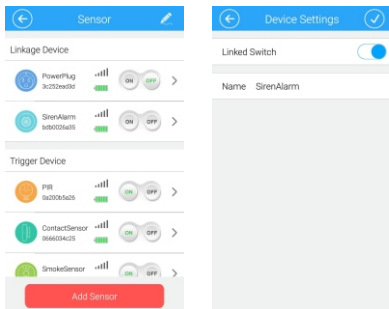
1. After adding the sensor ID, please confirm whether this ID number is as same as the ID number printed on sensor. If not, please add again.
2. The method of Add SOS by scan QR code is the same as Contact sensor, please refer to 4.2.
3. The gateway can add up to 10 pcs SOS.

## 4.8 The sensor linkage

There are two functions for sensor linkage, one of them is actively link others sensor work, this device is called as triggered device, including PIR, door contact, smoker sensor and SOS; the other is passively accept the linkage message which alarm host send, including power plug, microphone and IP camera.

### The linkage setting of triggered device

The linkage setting of contact sensor---Enter the contact sensor interface---Click the contact sensor



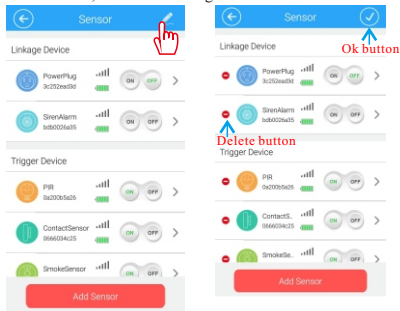


## Pay attention

1. When setting linkage siren alarm, you would set siren alarm linkage turn off/on. when the linkage switch turn on, once the triggered device that connecting with alarm host is triggered, the siren alarm will be triggered alarm; when the linkage switch turn off, any triggered device that connecting with alarm host is triggered, the siren alarm won't be triggered alarm.
2. Any triggered device can set the linkage setting of power plug.
3. The siren alarm and power plug turn on/off display the device turn on/off.

## 4.9 Deleting sensor

Click "Edit", enter the editing interface and select sensor what you need delete, click "delete"

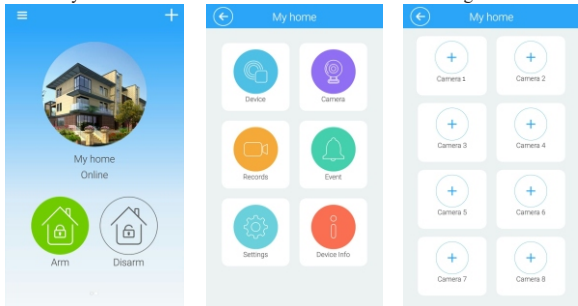


**Note:** Delete and the click OK, then exit the editing interface.

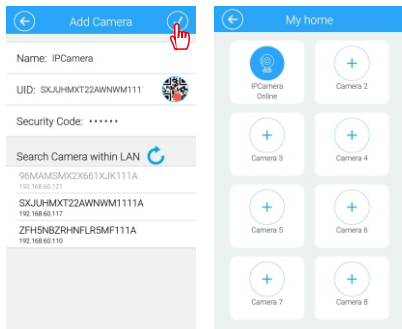
## 5. Adding IP Camera

### 5.1 Teaching Steps

Click My home icon ---Click camera icon ---Click adding camera icon



Type in camera basic information---Click confirmed

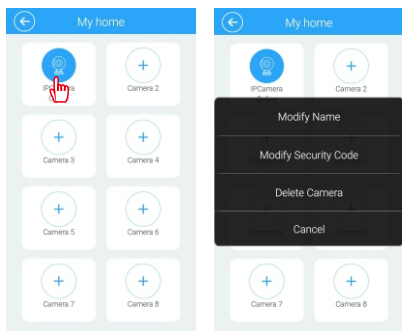


### Note:

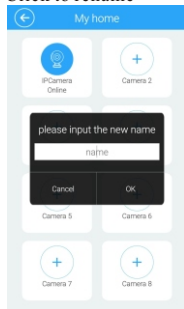
1. The method of adding camera UID is same as adding gateway, please refer step in 3.2  
Camera default password : admin
2. To avoid unauthorized access, please change password when accessing the camera for the first time.
3. The camera can be added to NVR Gateway only when both are under same network.
4. Up to eight cameras can be added to each NVR gateway.

### 5.2 camera other operation

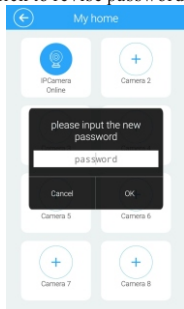
By pressing camera button and hold, following set up can be changed: delete camera, revise camera name, revise security password and cancel this function”  
Long press---select appropriate device



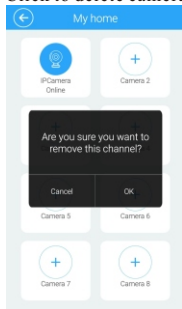
Click to rename



Click to revise password



Click to delete camera












### 5.3 Video Monitoring Picture

Click camera to enter video monitoring picture



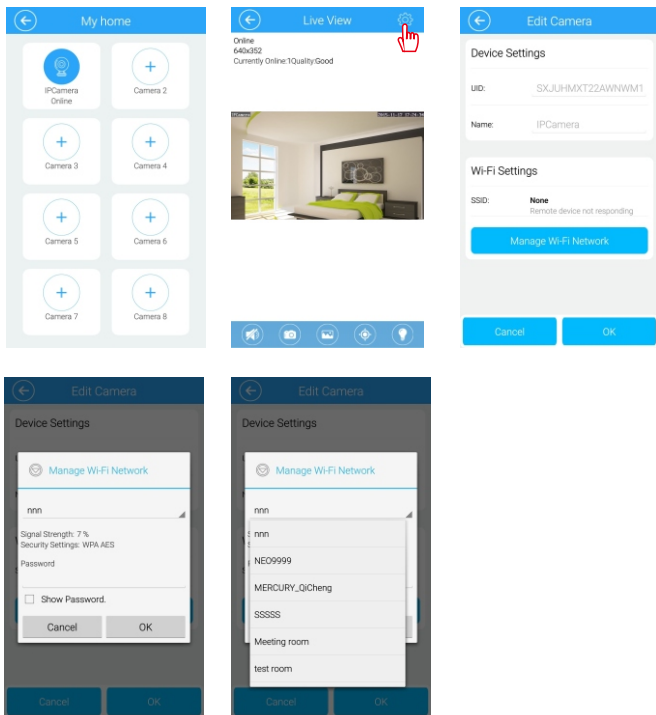
Function Buttons

	Speaker		Presetting		Horizontal Flip
	Capture		PIR		Resolution
	View		Vertical Flip		Scene

## 5.4 Camera Wireless Install

Click camera---Click install---Click wifi administration

Select wifi, enter password and click confirmed, install finished



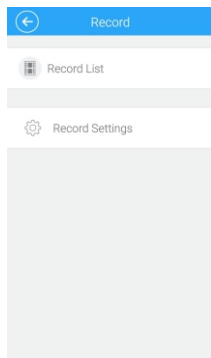
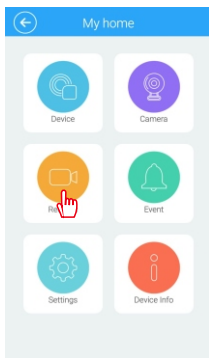
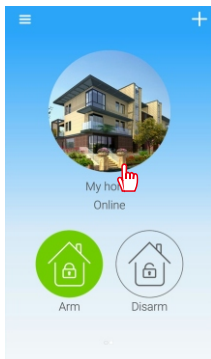
### Note

For initial setup of camera, customer should make connection between camera and WiFi router by using one key setup on camera app separately. Once WiFi connection is made between the camera and wifi router, the NVR gateway can search network and add the camera automatically or manually. The camera can be added to the NVR gateway by scanning QR code as well.

## 6. Recording

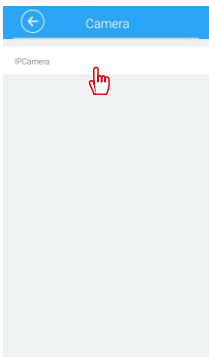
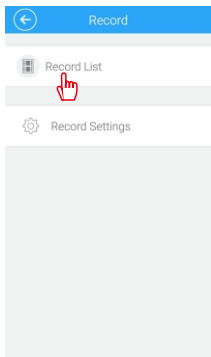
### 6.1 Enter the video interface

Click “Alarm host” icon click “Recording” icon enter the video interface



### 6.2 View recording

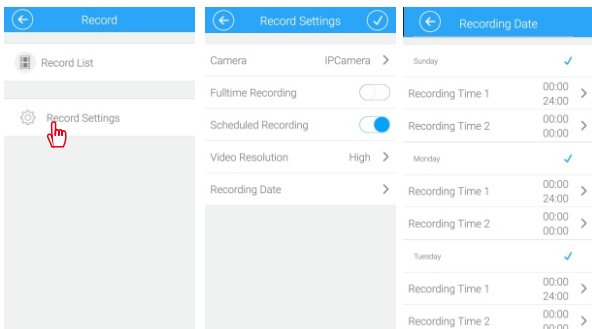
Click “video event” icon---choose the IP camera that you want to view---view event



## 6.3 Recording Setting

1). Enter record setting interface  
Click “Record setting” icon, and then enter recording setting interface

2). Video setting plan  
Slide the “On/Off” key to open video setting plan, then click recording date to set the video time.

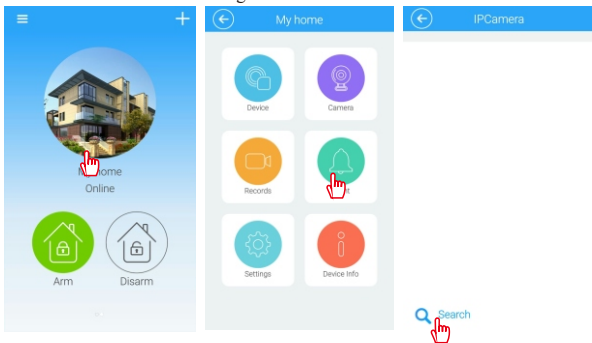


### Note

- \*Full-time recording records the video 24 hours a day
- \*Video setting plan means choosing part-time to video
- \*Full-time recording and part-time recording function can not be used at the same time

## 7. Alarm event

Click “Alarm host” icon---click “Event” icon---enter event interface, then click “Search” icon to search alarm event according to time

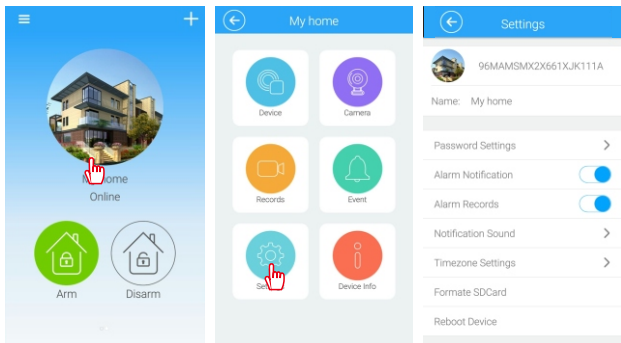


## 8. Setting

Click “Setting” icon, there are “Alarm host icon setting”, “Password setting”, “Alarm push function setting”, “Alarm recording setting”, “Push sound setting”, “Clock setting”, “Format disk setting”, “Restart host setting”

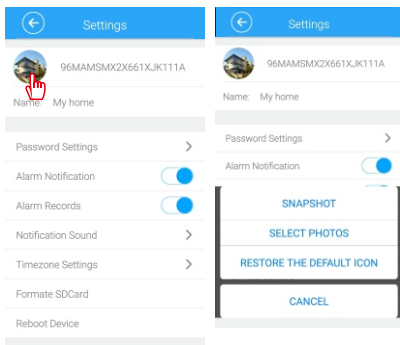
### 8.1 Enter the setting interface

Click “alarm host” icon---click“event” icon---enter “setting” interface



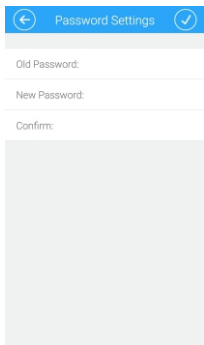
### 8.2 Modify alarm host icon

Click “alarm host” icon, then you can choose taking photo or adding a local image



## 8.3 Other settings

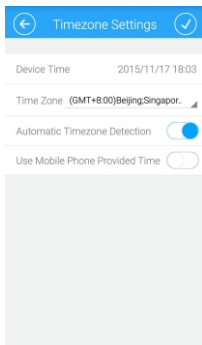
### Password setting



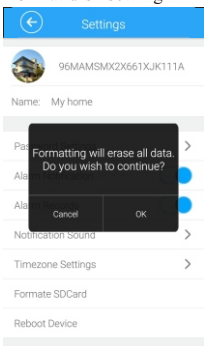
### Push sound setting



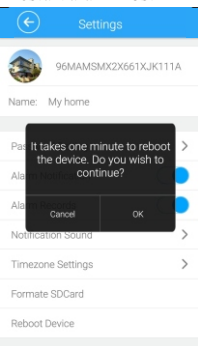
### Clock setting



### Format disk setting



### Restart alarm host



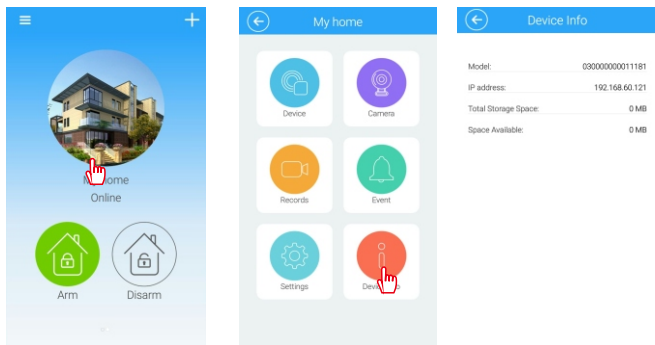
### Note

when format disk and restart alarm host, please do not power off, so as to prevent the alarm host from damaging



## 9. Device information

Click “Alarm host” icon--- click “Device information” icon ---view “Device information”

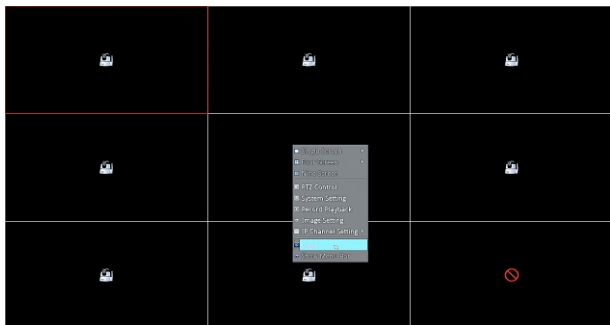


## 10.NVR

Please refer to “1.2 Product Connection Way” from Page 6, To connect all devices including Display Screen and Mouse. Then choose interface channel Of HDMI video signal you access, enter into video monitoring interface.

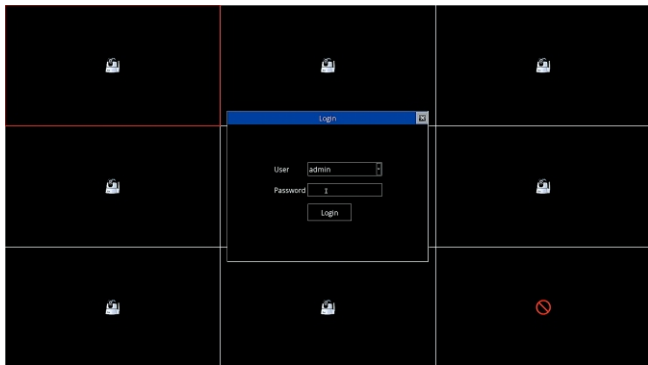
### 10.1NVR function

Please click right button of Mouse on NVR interface, Menu bar come out, Users can operate Single image, 4 images, 9 images, Pan-Tilt control, System setup, Video playback, image setup, IP channel setup, log in, display function options of Menu bar



## 10.2 Log in

User name: admin Password: admin

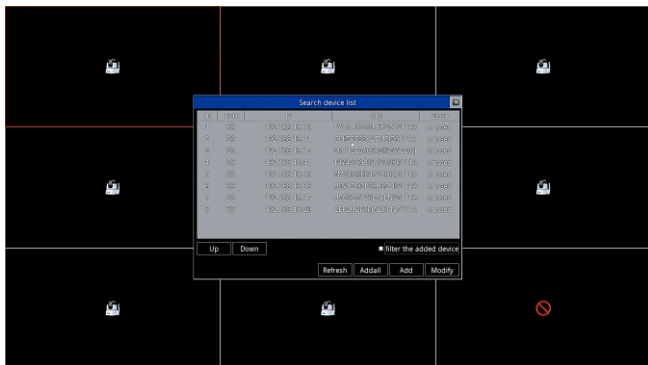


## 11. Add devices

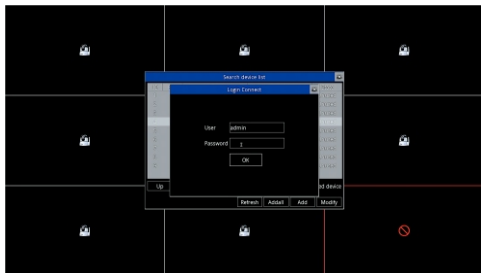
There is "Automation" and "Manual operation" in IP channel of Menu bar for users to add cameras, Please check "filter equipment has been added", Avoid to repeat to add device.

### 11.1 Manual Add

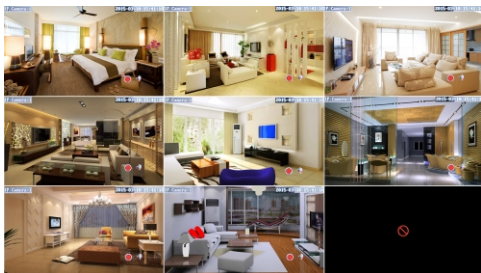
Choose Camera, click add button, enter password to add device.



Click add button, enter password of camera



Users can add 8 cameras for final interface



## 11.2 Automatic Add

Users can add devices randomly and automatically in LAN, if NVR has connected with other devices, please click automatic add, but please note that IP address of camera might change.

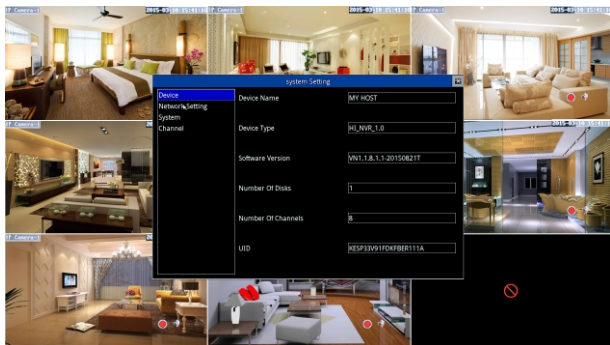


## 12. System Setup

There is “Device information” “Network information” “System information” “Channel information” in system setup column.

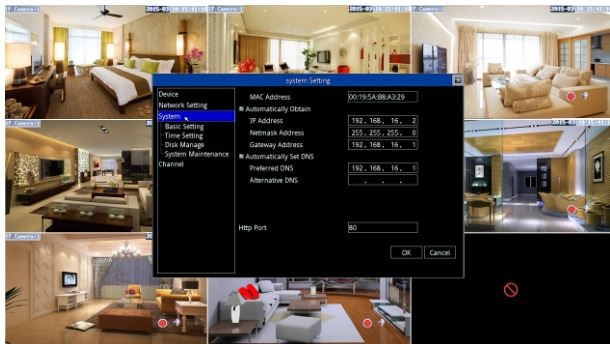
### 12.1 Device Information

Users can see device name, device type, software version, disk amount, channel amount, UID number in device information column



### 12.2 Network Setup

Users can set up IP address of device and DNS as well as HTTP port in network column.

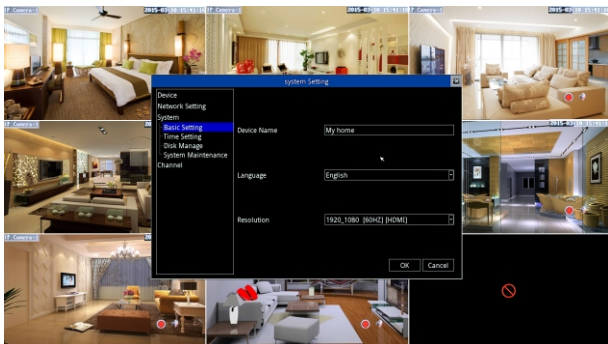


## 13. System Information

There is “Basic Settings” “Time Set” “Disk Management” “System Maintenance” in system information column.

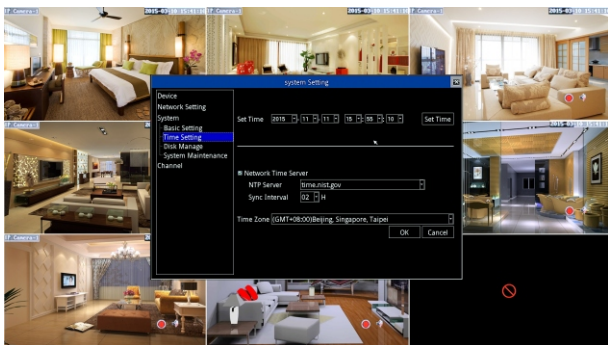
### 13.1 Basic Settings

Users can revise the name of Setup, choose Language (Chinese/English), Choose Resolution in Basic setup column.



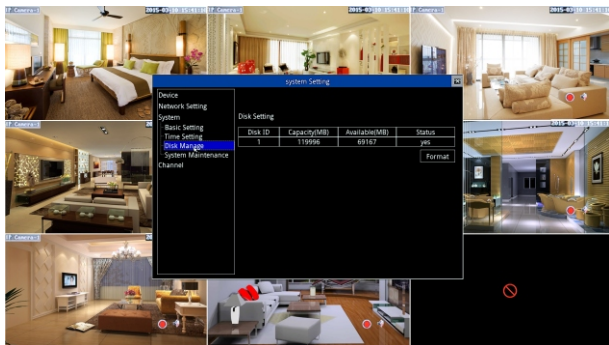
### 13.2 Time Set

Users can set up time of device and choose time zone.



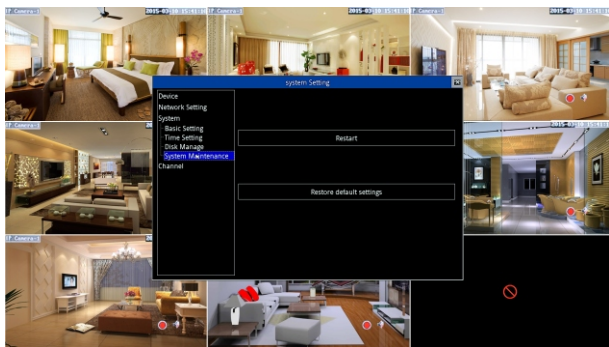
### 13.3 Disk Management

Users can check status of disk and format the data of disk.



### 13.4 System Maintenance

Restart and Reset button in System Maintenance.

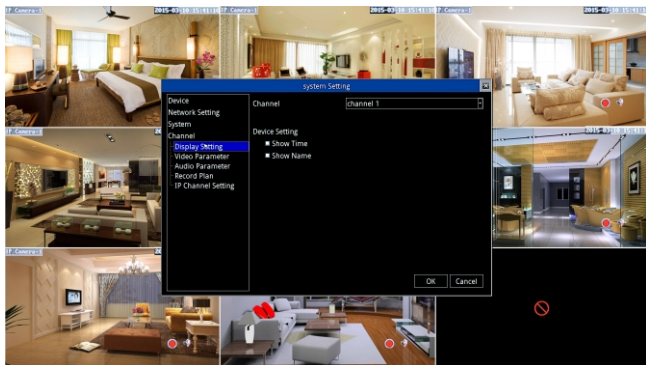


### 14.Channel Information

There is “Display Setup” “Video Parameter” “Audio Parameter” “Recording Plan” “IP Channel Setup” in Channel information column.

## 14.1 Display Setup

Users can choose channel in display setup column Display time and display name



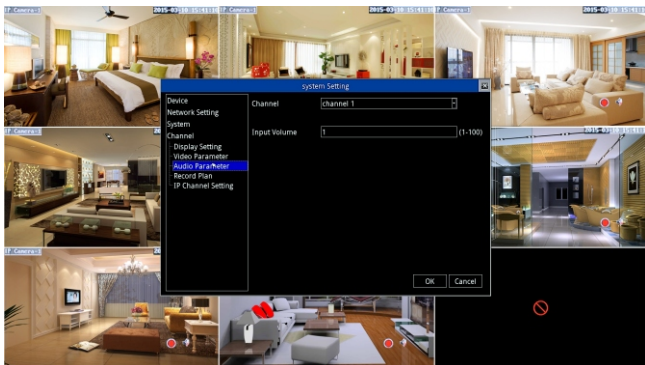
## 14.2 Video Parameter

In Video Parameter column, we can choose Resolution(1280X720P/650X352),Data rate, frame rate, video coding control.



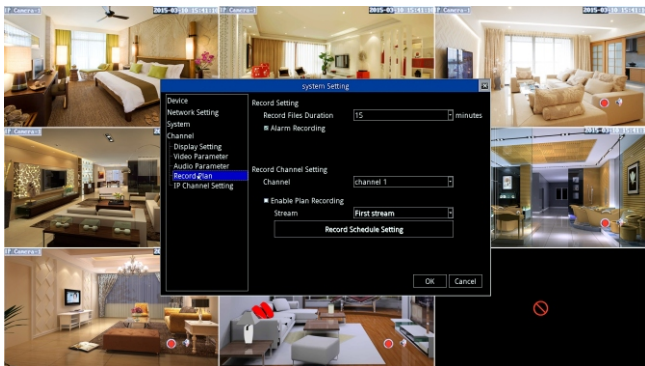
## 14.3 Audio Parameter

Volume range from 1-100



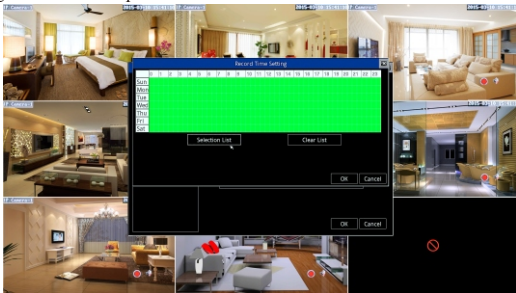
## 14.4 Recording Plan

In recording plan column, users can choose video recording file time, choose video recording channel, choose planning video recording data rate, choose time setup for video recording.



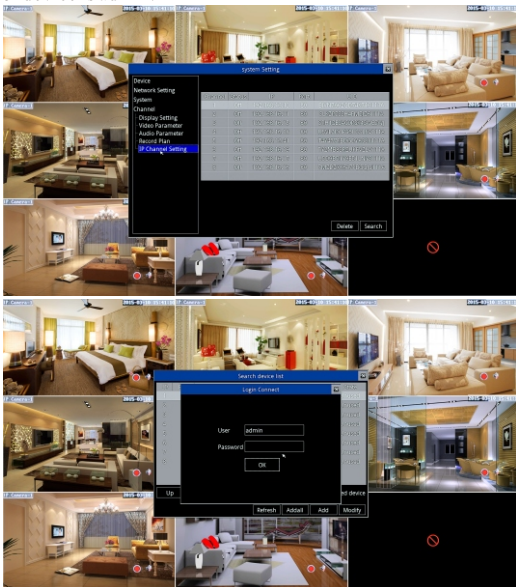


## Recording Schedule Setup



## 14.5 IP channel Setup

Click search button, choose device, enter password of device to add device, Original password of device is admin.



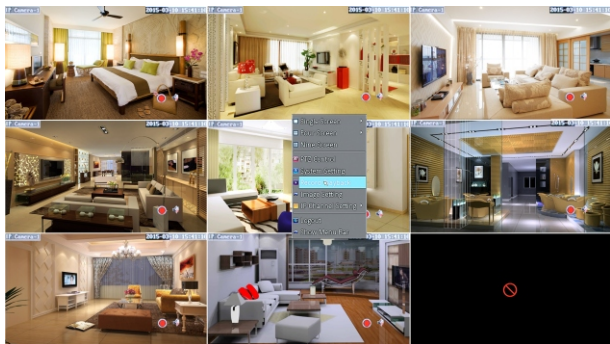
## 15. Image Setup

Image setup column display Vertical flip, horizontal image, brightness, Saturation, contrast ratio and Chroma.



## 16. Video Playback

On video playback menu, choose date, channel and video type, it will display video file in corresponding channel. User can play, pause, slow playback and fast-forward.



Video file color display

Planning Video Recording

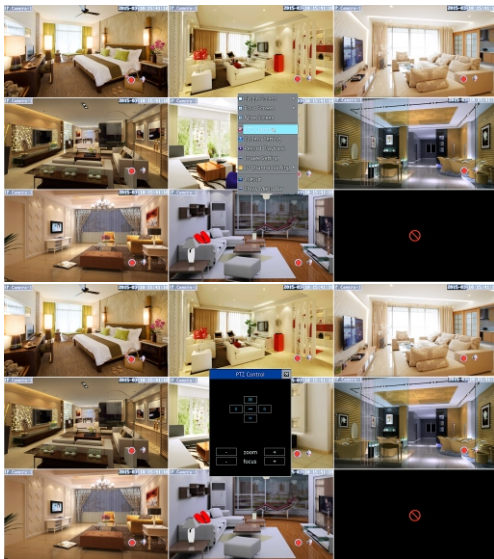
Alarm Video Recording

Manual Video Recording



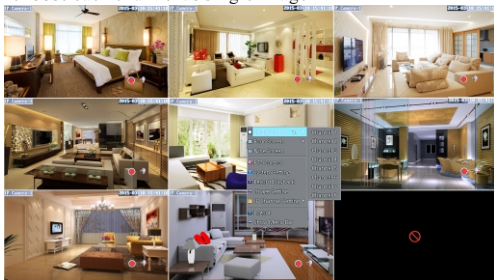
## 17. Pan/Tilt control

On NVR interface, choose device and click right button to choose Pan/Tilt control in menu bar. User can control the direction, zooming and focusing of the camera.



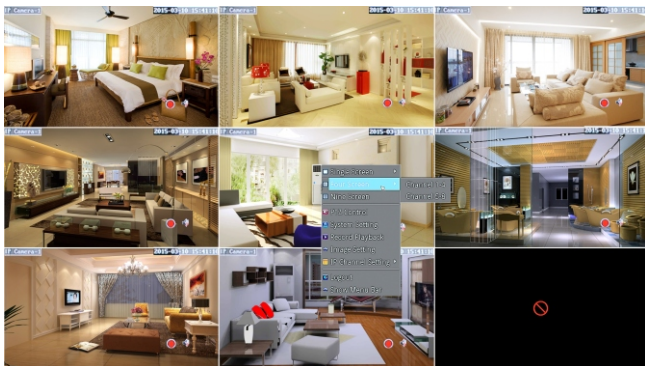
## 18. Single Image

Users can choose each channel as single image



## 19. 4 images

Users can choose channel 1 to 4 as quad image or channel 5 to 8 as quad image.



## 20. Display Menu bar

Click Display Menu bar to display function option on the upper left corner of interface.

