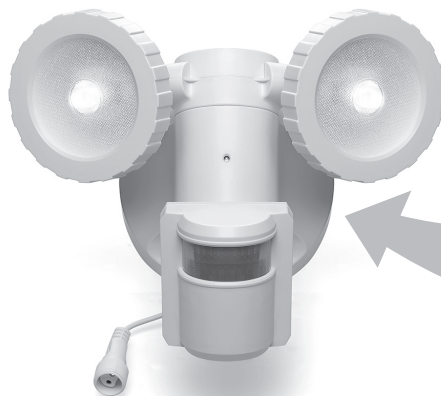


Quick Start Guide

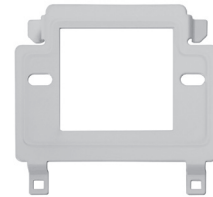
IMPORTANT - THIS LIGHT REQUIRES DIRECT EXPOSURE TO THE SUN TO CHARGE

The Defiant DFI-0452-WH Motion Security Light uses solar power to charge its on-board lithium-ion battery. **Upon installation, the light should be allowed to charge for at least 6 hours in direct sunlight before first use.** (Optional: leave the light OFF for at least 2 days, to charge without interruption, before turning ON for continuous operation.)

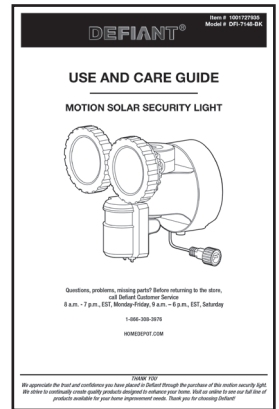
What's in the Box



Motion Security Light
Rechargeable Lithium-Ion Battery included and installed.



Mounting Bracket
(May be attached to the back of the Motion Security Light.)



Use and Care Guide



Solar Panel

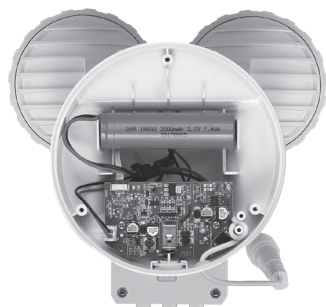


Solar Panel Cradle



Set of Screws and Wall Anchors
for Mounting Bracket and Cradle

About the Rechargeable Battery Specifications and Usage



Battery is installed, and may have a starting charge.

The Motion Security Light includes a **2000mAh 3.7V rechargeable Lithium-Ion battery**. It is already installed in the unit, and may have a small charge for testing.

During the day, the battery is charged by solar energy; it take about **6 hours in clear, direct sunlight for the battery to charge to full capacity.**

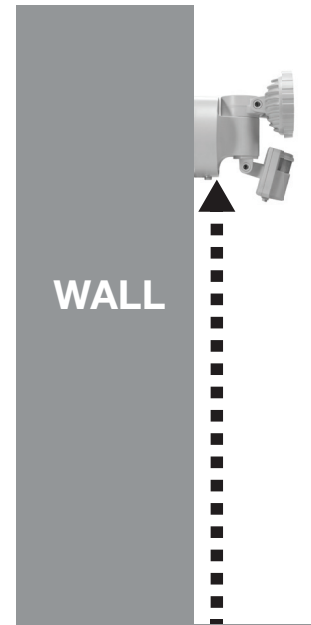
In the evening, when the light switches over to motion-sensing, the battery discharges whenever the light is triggered. **It will discharge for a total of about 2 hours before being depleted.** Once the battery is depleted, the light will stop working until it is charged again the next day.

The battery is exclusively for use in the Defiant DFI-0452-WH, and replacement batteries are available. Contact Home Depot Customer Service at 1-866-308-3976 for details.

Placement of the Light for Optimal Operation

Mount at least 7.5 feet above the ground

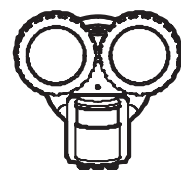
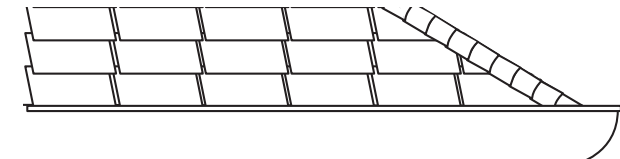
You can install the light almost anywhere in an outdoor setting, so long as it can be connected to the Solar Panel.



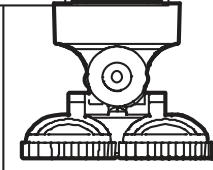
WALL

The light works best mounted **7.5 feet above the ground.**

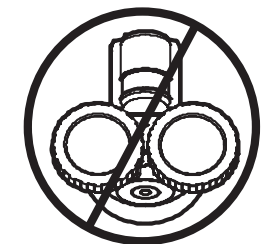
Mount on Wall or Eave



WALL Mount

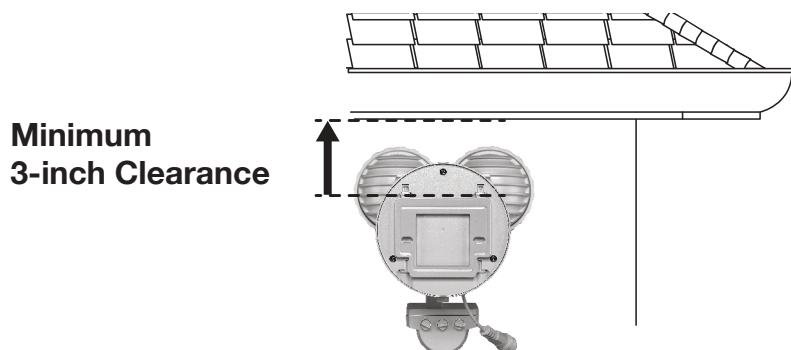


EAVE Mount



Do Not Mount INVERTED

Leave 3 inches of clearance for the Mounting Bracket

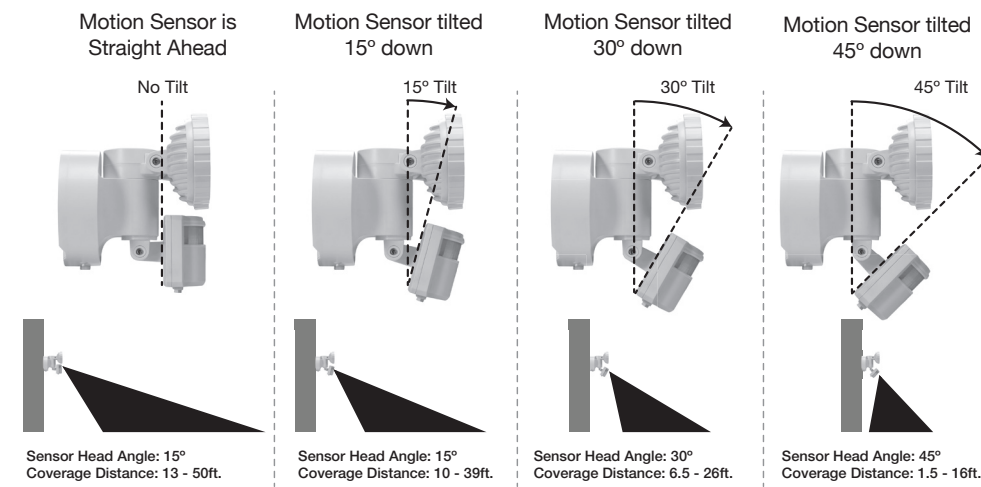


Minimum 3-inch Clearance

When installing the Mounting Bracket, make sure it has at least 3 inches of clearance from the top of the bracket, to the bottom of any edge, overhang or rain-gutter that may impede installation.

Adjust the PIR Motion Sensor Head

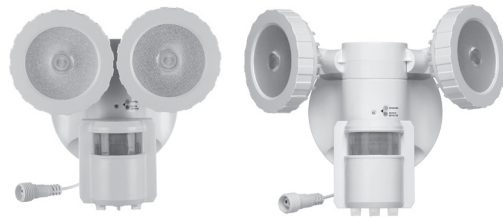
Adjust the Motion Sensor Head based on the distance you prefer to detect motion. Adjust SENS accordingly.



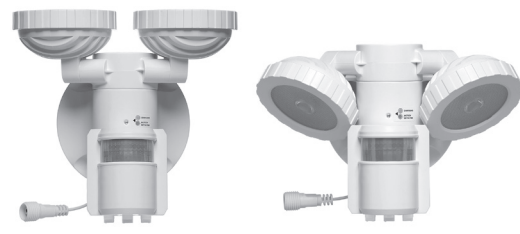
Sensor Head Angle: 15° Coverage Distance: 13 - 50ft.
Sensor Head Angle: 15° Coverage Distance: 10 - 39ft.
Sensor Head Angle: 30° Coverage Distance: 6.5 - 26ft.
Sensor Head Angle: 45° Coverage Distance: 1.5 - 16ft.

Adjusting Lamp and Motion Sensor Heads

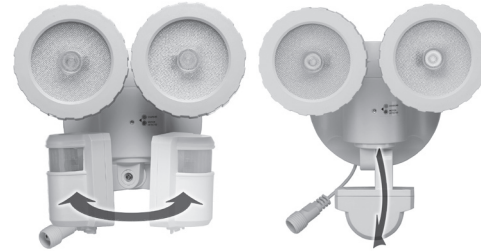
The LED Lamp Heads can be adjusted independently, and up to 45° from the front-facing position.



Horizontally, the LED Lamp Heads can be independently adjusted about 135°.



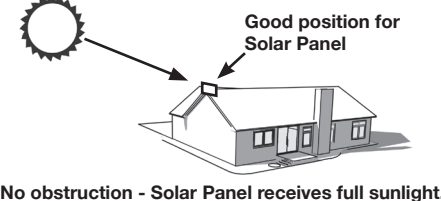
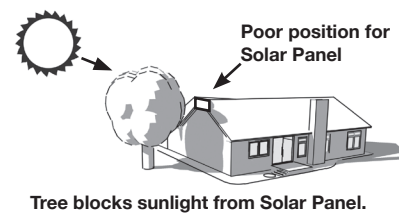
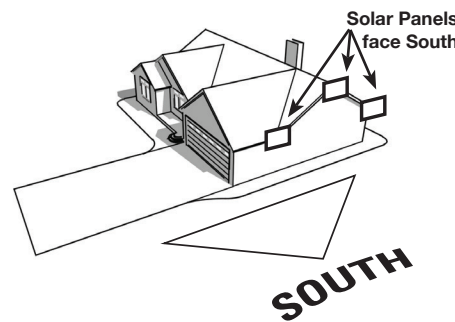
The Motion Sensor can be adjusted in a side-to-side arch of about 160°, and can be angled 90° downward.



Where to Place the Solar Panel for Optimal Exposure to the Sun

The Solar Panel should be placed in an area that allows for the maximum amount of sunlight exposure per day.

- Solar Panel is best when placed on the southern-facing portion, or the highest point, of a structure.
- The panel should not be placed where shade or shadow is cast upon it by trees, buildings, telephone poles, or other obstructions.

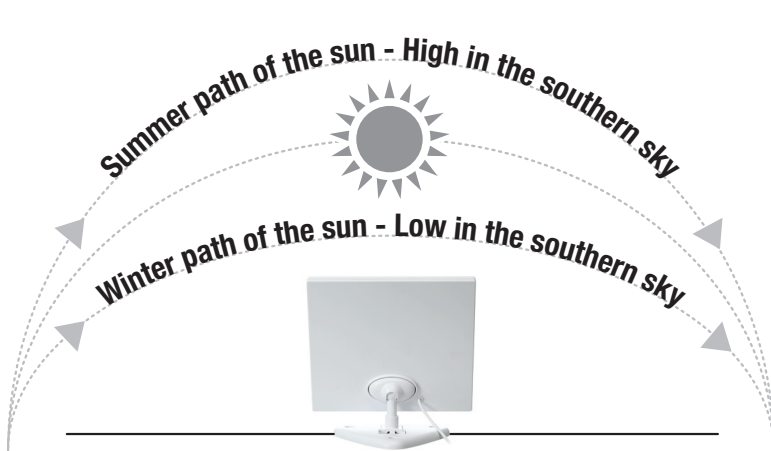


30-foot Extension Cord is Available



The Solar Panel has a 15-foot cord for attachment to the Light Fixture. A 30-foot extension cable is available; **contact Home Depot Customer service for information.** You can use up to 2 extension cables, giving you an additional 60 feet distance between the Solar Panel and the Light.

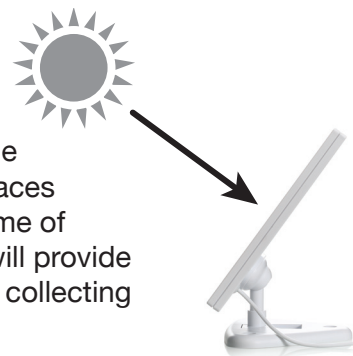
Once installed, the Solar Panel should be angled towards the southern sky, so that the face of the panel is exposed to as much sunlight as possible during the day. (Generally, an upward angle of 45° should be sufficient for exposure.)



Helpful Tip:

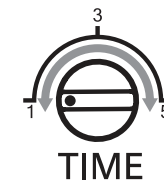
At high noon, adjust the Solar Panel so that it faces the sun. During any time of year, this adjustment will provide optimal positioning for collecting solar energy.

You can also angle the panel up by 45°, which should provide for adequate exposure.

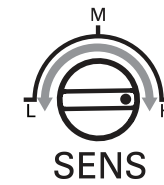


Adjusting TIMER, LUX and SENS Settings

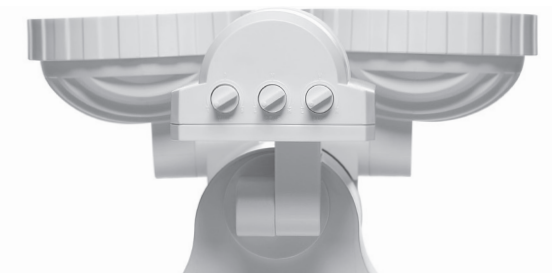
Your Motion Security Light has 3 basic settings, TIME, LUX and SENS.



TIME adjusts the amount of time the light will stay ON when triggered by motion. It can be adjusted from 1 to 5 minutes.



SENS adjusts how “sensitive” the PIR is to motion.

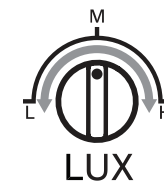


SENS

L (Low)
Least sensitive setting.
Good for stairs, door coverage.
Low energy usage.

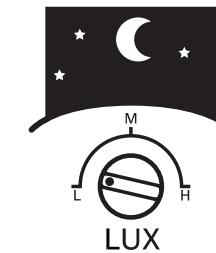
M (Medium)
Good for small yards,
garages, and patios.

H (High)
Detect motion up to 50' away.
Good for large yards, open areas.
High energy usage.



LUX adjusts the level of light that has to be reached before the light will activate when motion is detected. The following settings will activate the light:

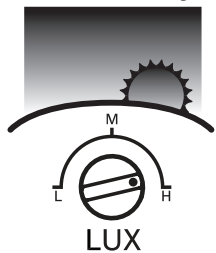
Automatically turns ON when it's dark.



Automatically turns ON just after sunset.



Automatically turns ON late in the day.



About the Indicator Light (Blue = Charging • Green = Motion)



Your Motion Security Light has an Indicator light that will help you understand what the unit is doing at any given time.

BLUE Indicator Light, “CHARGING”

- Flashes every 4-6 seconds when unit is charging.
- Indicates that the connection between Solar Panel and Rechargeable Battery is intact.
- Demonstrates battery is functioning properly.

If you do not see the flashing blue light during the day, the battery may be completely charged. If, however, the light does not turn ON in the evening, check the connection between the Solar Panel and the Light unit.

You will not see the Blue indicator light ON at night.

GREEN Indicator Light, “DETECTING MOTION”

- Flashes/Stays ON when motion is detected.
- Flashes during the daylight or at night.
- Indicates that the motion sensor is working, and the battery is charged.