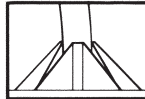
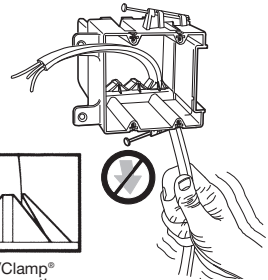


Auto/Clamp®

Eliminates separate cable clamps as well as the tools usually needed for installation. To install the cable, insert stripped or non-stripped nonmetallic wire into the Auto/Clamp® opening and pull through to the desired length. The cable is automatically secured and the installation is complete. There are no other operations for the electrician to perform. Contractors can look forward to saving time and money with every Auto/Clamp® plastic box installation.

(One cable per Auto Clamp)

AUTO CLAMP®



Auto/Clamp®
clamping action

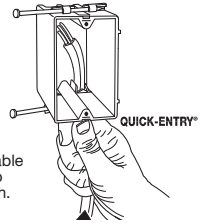
Quick/Entry®

Speeds installation by eliminating needs for tools.

Another time-saving idea is Quick/Entry®, a method that allows you to push stripped or unstripped nonmetallic cable into a single plastic box without removing knock-outs.

Jagged edges usually formed in other boxes are eliminated.

(Multiple cables per Quick-Entry)



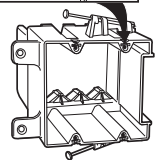
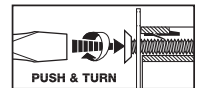
Just push cable
in and pull to
proper length.

Quick/Click®

Fast, easy and secure installations. The unique, labor saving Quick/Click® design secures the wiring device quickly and easily. Simply push in the mounting screws with a screwdriver and turn the screw one or two turns.

With Quick/Click® mounting, you cannot cross-thread or strip a device mounting screw.

QUICK-CLICK®



Stabilizer

In a 2 x 4 application, the stabilizer leg rests against the interior surface of the opposing wall virtually eliminating inward movement of the box.

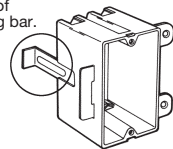
Metal

Remove the rear stabilizing bar from its shipping position and insert the long end into the slot located underneath the dry-wall stop. For applications with wood studs, break off small section of stabilizing bar where marked before insertion.

Integral

P122B is optimally sized for Steel studs only. All others may be used with both steel and wood with little or no deflection.

Proper mounting
position of
stabilizing bar.



Wood and Steel Stud

Metal Bracket

1. A CT-1 Crimping Tool, is recommended for the installation of these boxes to steel studs.

Place box flush against side of steel stud, at the required height, as shown in **Figure 1**.

Note: If box is to be mounted to a wood stud, use two holes in the bracket to mount the box with common nails.

2. Place CT-1 tool over flange of stud and box bracket as shown in **Figure 2**. Set point of crimping tool spindle in hole provided between crimping teeth of the bracket.
3. Press handles of crimping tool firmly until teeth on bracket penetrate steel stud and curl to secure box firmly to the stud.
4. Repeat steps 2 and 3 to secure the second set of teeth on the bracket to the steel stud.
5. Multi-gang boxes are provided with a mounting bracket on each side of the box so that one side can be nailed to a wood stud or crimped to a steel stud. A phantom stud (wood or steel) can then be mounted to the remaining bracket on the box.

This phantom stud is nothing more than a short stud, which once installed is pressed between the walls, providing additional support for the box, as shown in **Figure 3**.

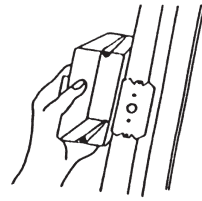


Figure 1

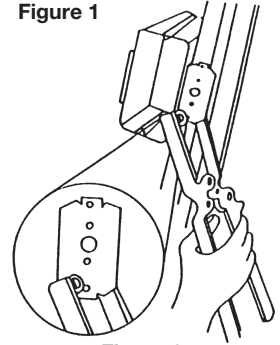


Figure 2

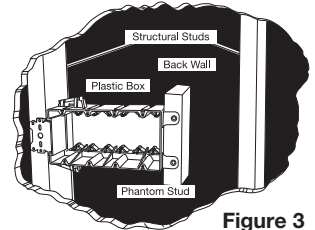


Figure 3

Integral Plastic Bracket

Mount the box to the stud using two (2) screws (not included). Using the recommended type of screw in conjunction with the countersunk mounting holes on the box allows for a truer flush mount.

Recommended Screws: 1/2" minimum #6 flat head wood, drywall, or sheet metal screw.

Range and Dryer

For use with 30A - 60A flush mount receptacles. Factory installed internal cord clamp accommodates 10 through 6 gauge wires.

Box Extender

Per NEC, "In walls or ceilings with a surface of concrete, tile, gypsum, plaster, or other non-combustible material, boxes shall be installed so that the front edge of the box will not be set back of the finished surface more than 6mm (1/4"). In walls and ceilings constructed of wood or other combustible surface material, boxes shall be flush with the finished surface or project therefrom."

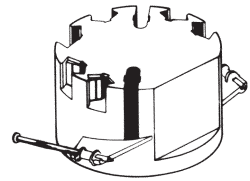
Pass & Seymour extension rings (available in 1 and 2 gang) are 1/4" thick and are stackable to any desired thickness in 1/4" increments. A longer (#6-32) mounting screw may be required in some applications.

Ceiling Box

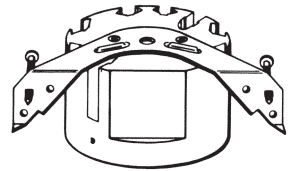
1. **Nail-On** or **J-Bracket** types, just nail the ceiling box accurately to the stud.

Note: The stud should rest on the built-in step (see diagram) of the ceiling box to allow for flush mounting with either 3/8" or 1/2" wallboard.

Bar-Hanger type, loosen both screws on bracket used to secure box to hanger. Adjust bar hanger for either 16" or 24" joist spacing by aligning tab lock with proper slot. Fully close tab lock with pliers until flush with bar surface. Nail hanger to studs. Slide box to position desired and tighten screws to secure box to hanger.



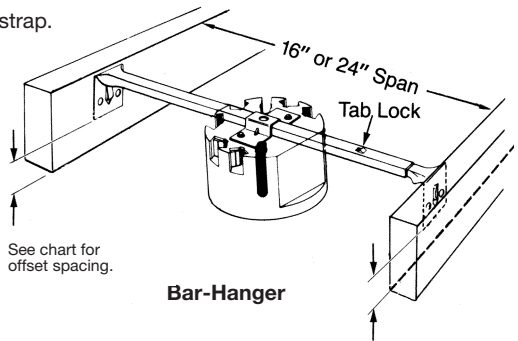
Nail-On



J-Bracket

2. **Auto/Clamps** – Push nonmetallic cable (stripped or unstripped) through the Auto/Clamp cable entry. Pull cable to proper length.
3. When ceiling is finished, proceed to mount the lighting fixture to the ceiling box, using the mounting strap supplied with the fixture. Align the holes in the strap with the ceiling box mounting holes.
4. Secure the lighting fixture to the mounting strap.

Dia.	Volume	Offset Spacing
3-1/4	18	1-7/8 inch
4	20	1 inch



Bar-Hanger

3-3/4" Round Ceiling and Wall Boxes

1. Cut a 3-3/4" round hole in the ceiling or wall using a hole saw.
2. Insert nonmetallic cable (stripped or unstripped) into the Auto/Clamp® cable entry.
3. Pull cable through to desired length. The cable is automatically secured without the need to install separate clamps.
4. Insert the box into the hole and fasten using 3 - #6 screws that fully penetrate 3/8" trade size or thicker plywood, or 7/16 trade size or thicker Oriented Strand Board (OSB), or 1/2" or thicker solid wood.

Rating: 8 lbs. max. fixture rating when installed with 3 - #6 screws that fully penetrate 3/8" trade size or thicker plywood, or 7/16 trade size or thicker Oriented Strand Board (OSB), or 1/2" or thicker solid wood, for use on ceiling or walls. Not for fan support.

Low-Voltage Boxes and Divider

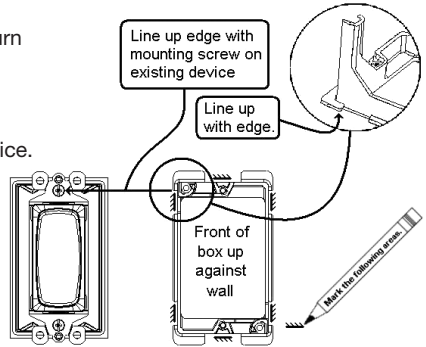
If you are installing video, telephone, or network wiring, you must use a low-voltage box or a low-voltage divider to separate the low-voltage wiring from high-voltage electrical wiring.

(continued on back)

Low-Voltage Boxes and Divider (con't.)

Old Work Style Directions:

1. Disconnect power to circuit by removing fuse or turn circuit breakers OFF before removing cover plate.
2. Remove wall plate on existing device if you want to line up new low voltage device next to it.
3. Line up edge with mounting screw on existing device.
4. Mark the areas shown.
5. Connect your marks using the inside edge of the low voltage bracket as a straight edge. (Cut out dimensions also listed on the front of low voltage bracket.)
6. Cut a hole in the wall.
7. Insert low voltage bracket into the wall with swing bracket flat to the box. Turn screw clockwise with screwdriver, which will turn the swing bracket to upright position, and tighten till snug against wall. (Swing out brackets permits installation of box in wall 1-1/4" thick down to 1/8" thick paneling.)

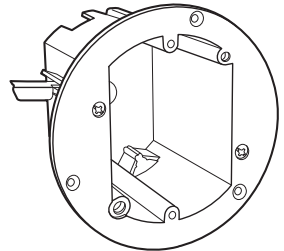


Warning – To prevent severe shock or electrocution, always turn power OFF at the service panel before installing this unit, working on the circuit, or changing a lamp.

Old Work

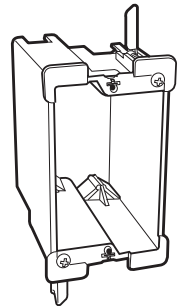
Ceiling Boxes

1. Cut a 3-3/4" round hole in the ceiling using either a hole saw or a hand saw (you may also place the back of the box against the ceiling and draw a pencil line around it).
2. Insert nonmetallic cable (stripped or unstripped) into the Auto/Clamp® cable entry.
3. Pull cable through to desired length. The cable is automatically secured without the need to install separate clamps.
4. Insert the box into the ceiling with swing bracket flat to the box. Turn screw clockwise with screwdriver, which will turn the swing bracket to upright position, and tighten until snug against the ceiling. (Swing out brackets permit installation of box in ceilings 1-1/4" down to 1/8" thick).



Wall Boxes

1. See back of box for cut out dimensions (you may place back of box against the wall and draw pencil line around it for template).
2. Insert nonmetallic cable (stripped or unstripped) into Auto/Clamp® cable entry.
3. Pull cable through to the desired length. The cable is automatically secured – without having to install a separate clamp.
4. Insert box into the wall with swing bracket flat to the box. Turn screw clockwise with screwdriver which will turn swing bracket to upright position, and tighten till snug against wall. (Swing out brackets permit installation of box in wall 1-1/4" thick down to 1/8" thick paneling).



Pass & Seymour

