

PROBRITE™

LED AREA LIGHT

SPEC SHEET



Catalog No. : ASTR40-PC-4K-GR

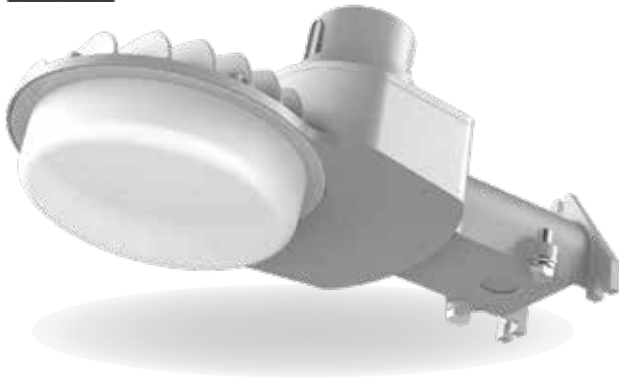
Type : Area Light

Project Name :

Location :

Qty :

Date :



This LED Area and Wall Light with NEMA twist-lock Dusk to Dawn photocell offers the latest in LED performance technology with a pro-grade security solution that provides an automatic nighttime 'ON' and daytime 'OFF' mode. The fixture's 5,000 lumens brightly illuminates a wide area glare-free, saves 85% on energy costs, is maintenance-free, and never requires a single bulb change.

APPLICATIONS

From barns, garages, to roadways, the Astra 40 is designed to easily be installed anywhere requiring wide and uniform light coverage.

PRODUCT PERFORMANCE AT A GLANCE

SYSTEM WATTAGE	LED WATTAGE	LUMENS	LP/W	CRI	REPLACES (MH)
40W	36W	5000 lm	125 lm/w	≥70	150W

HOUSING

One piece die cast aluminum housing with integral arm mounting hub that can be direct mounted with lag bolts or onto 1 1/2" O.D. mounting arm.

OPTICS

Refractive design featuring prisms to spread light in a symmetrical Type 5 distribution.

Frosted lens eliminates glare for an inviting light source.

FINISH

Fade, weather, and abrasion resistant, electrostatically applied, thermally cured, triglycidal isocyanurate (TGIC) textured polyester powdercoat finish. Paint is smooth gray.

IP RATING & LISTINGS

LED light engine is weather proof rated IP65.

DLC Premium, cULus, FCC Certified

MOUNTING

Fixture mounts to vertical surface using 1/4" lag bolts or easily fits onto 1-1/2" O.D. round pipe/tube. Direct mount and round pipe mounting hardware provided as standard. Extension mounting arm available separately as an accessory.

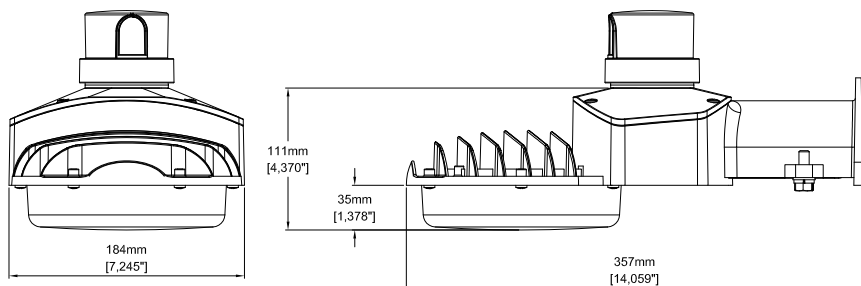
WARRANTY

Fixture is covered by a 5-year limited warranty. See probrite.com/warranty for details.

LED AREA LIGHT

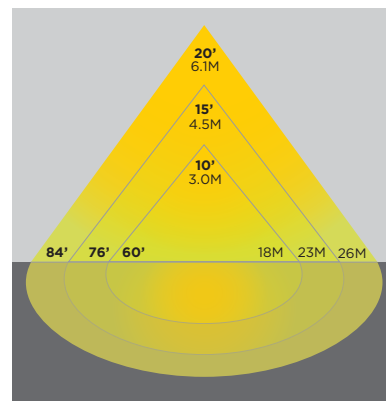
ASTR40-PC-4K-GR

PRODUCT LINE DRAWING



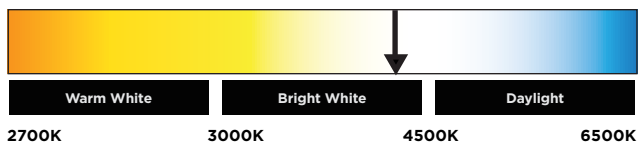
SUGGESTED MOUNTING HEIGHT:
12-20FT. (3.7-6.1M)

3D PHOTOMETRIC VIEW



PRODUCT SPECIFICATIONS

LUMENS (LIGHT OUTPUT)	5000
WATTAGE	40W
MOUNTING	Wall/Post Mount, Extension Arm
FREQUENCY	50-60 HZ
THD	<20%
PF	>0.9
AMBIENT OPERATING RANGE	-30-40°C
INPUT VOLTAGE	120-277V
EFFICACY	125 LM/W
LED CHIP	Lumileds 3030®
DRIVER	Non-dimming YG® driver
PHOTOCELL	Yes, 3-Pin 120-277V NEMA
DRIVER EFFICIENCY	>85%
STANDARD LIFETIME	>50,000 hours
STANDARD WARRANTY	5 Years
WATER PROOFING GRADE	IP65
WEIGHT	3.7 lbs (less arm)
CCT	4000 Kelvin



ACCESSORIES

24" Extension Arm Mount — Model ARM24-SLV

APPLICATION

