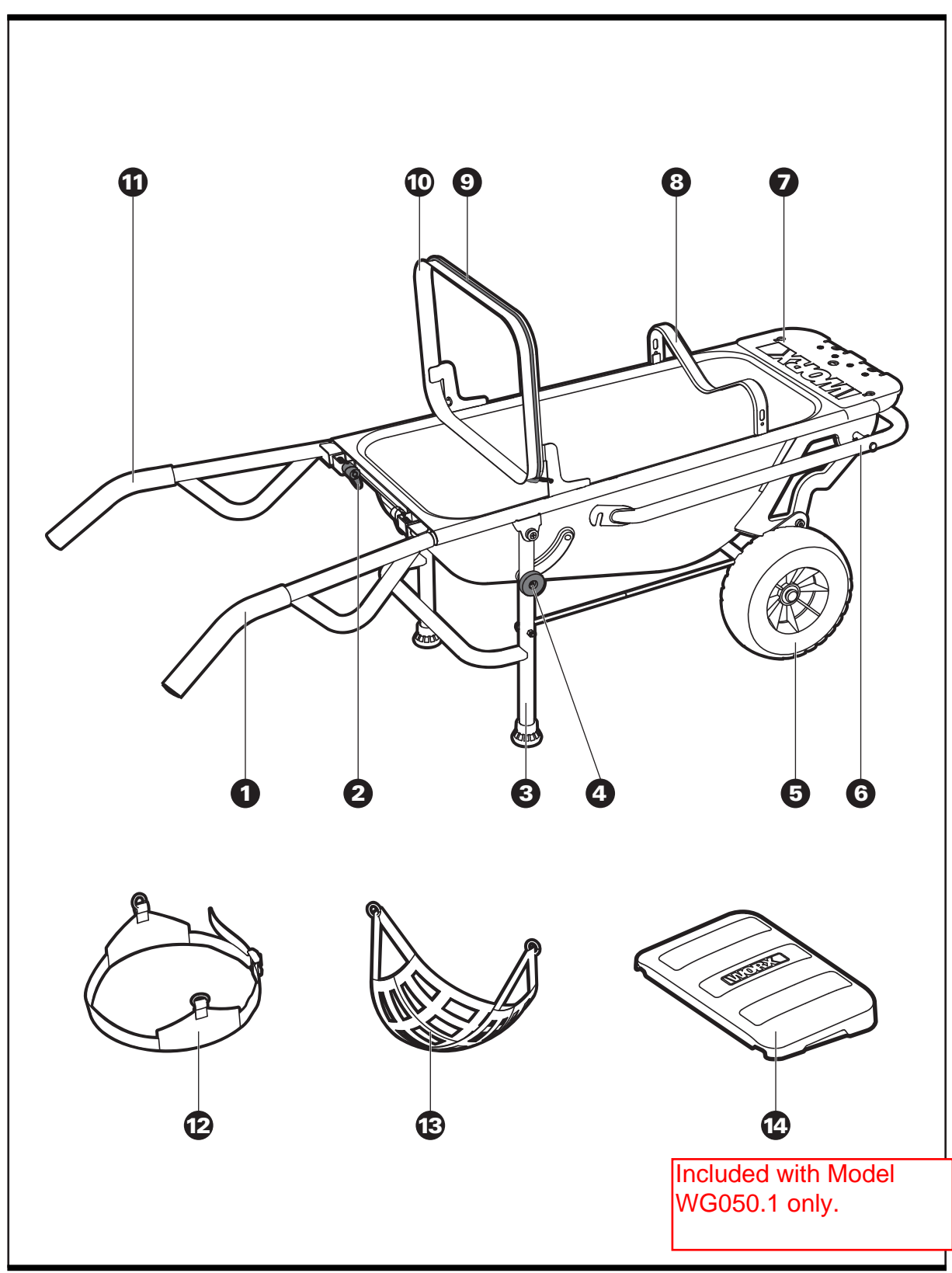
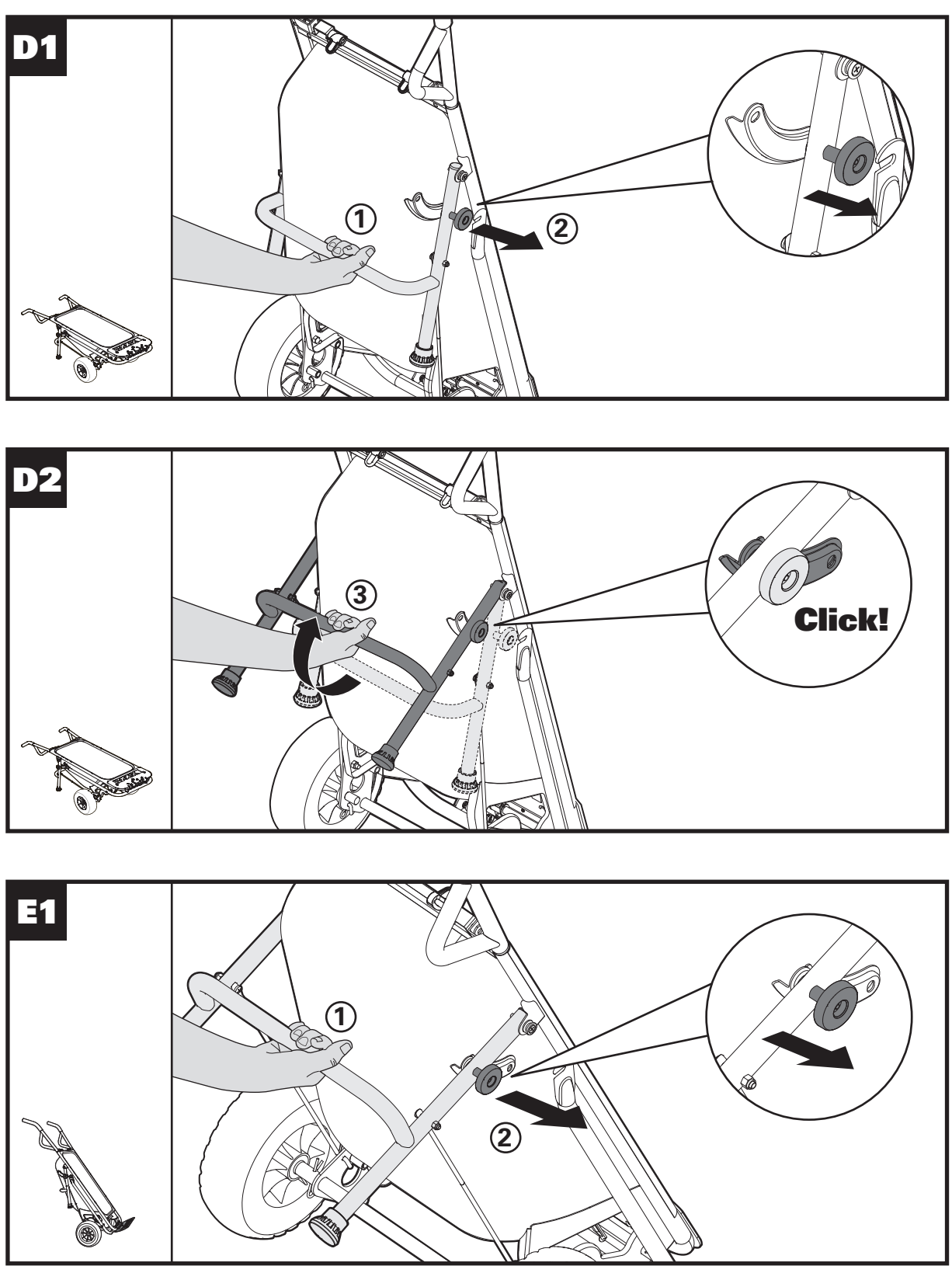
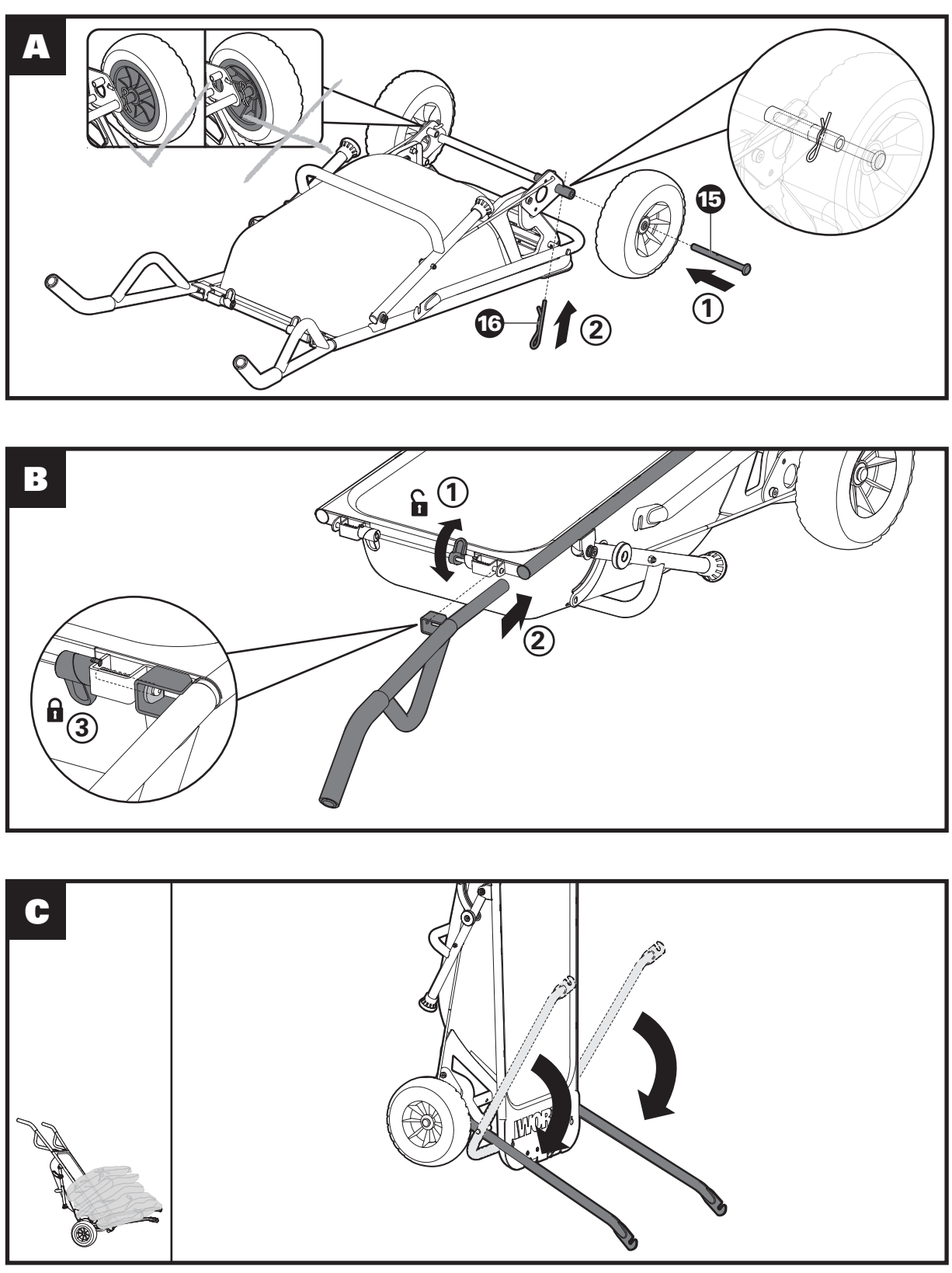
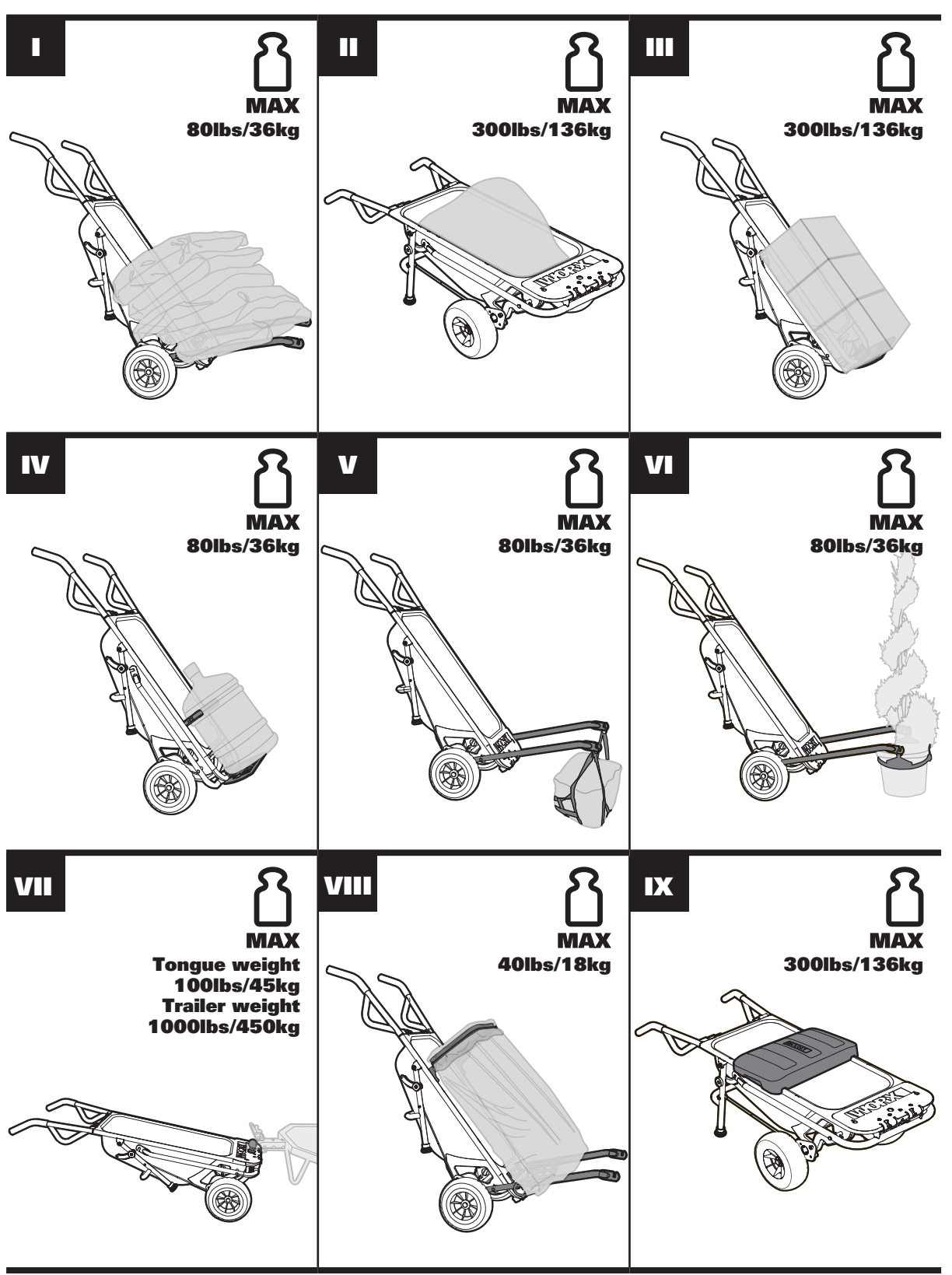


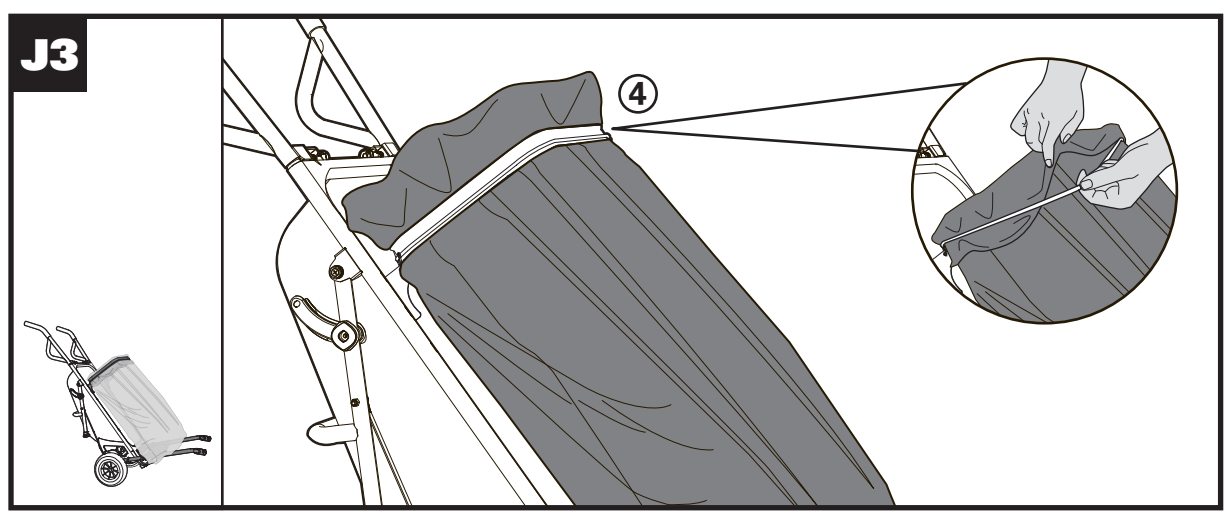
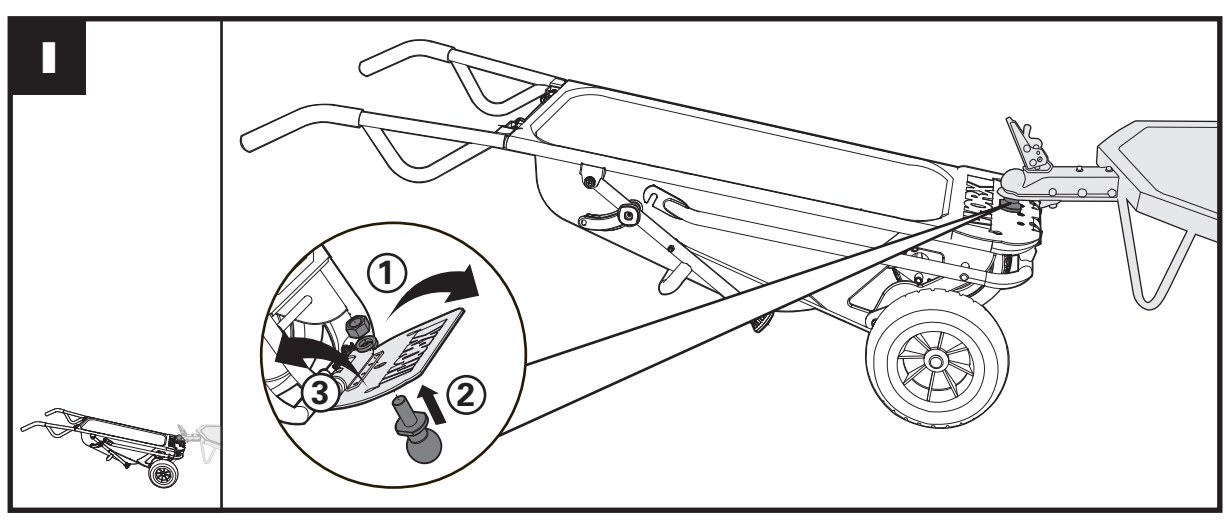
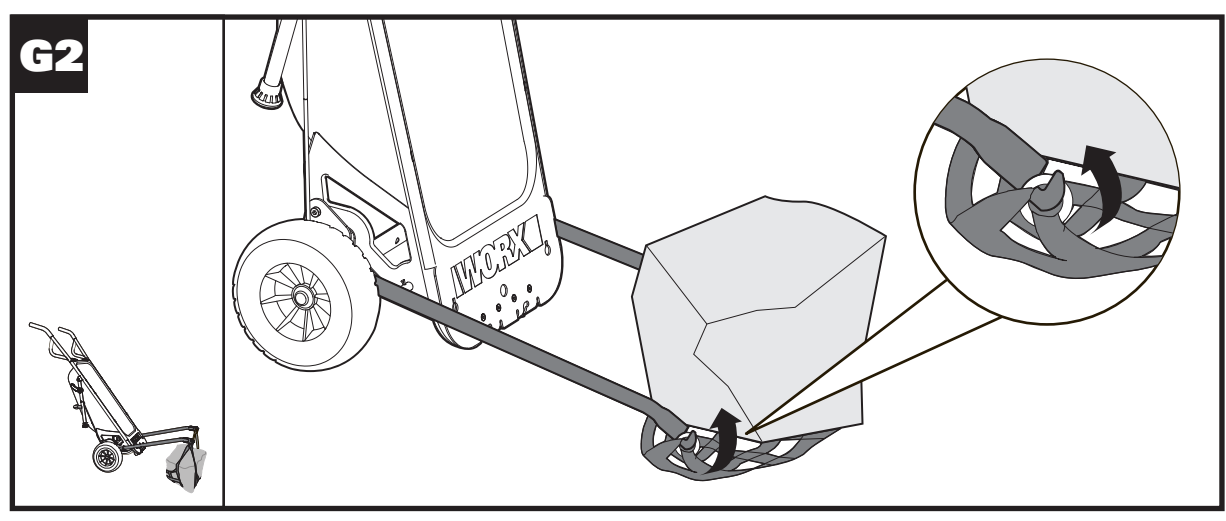
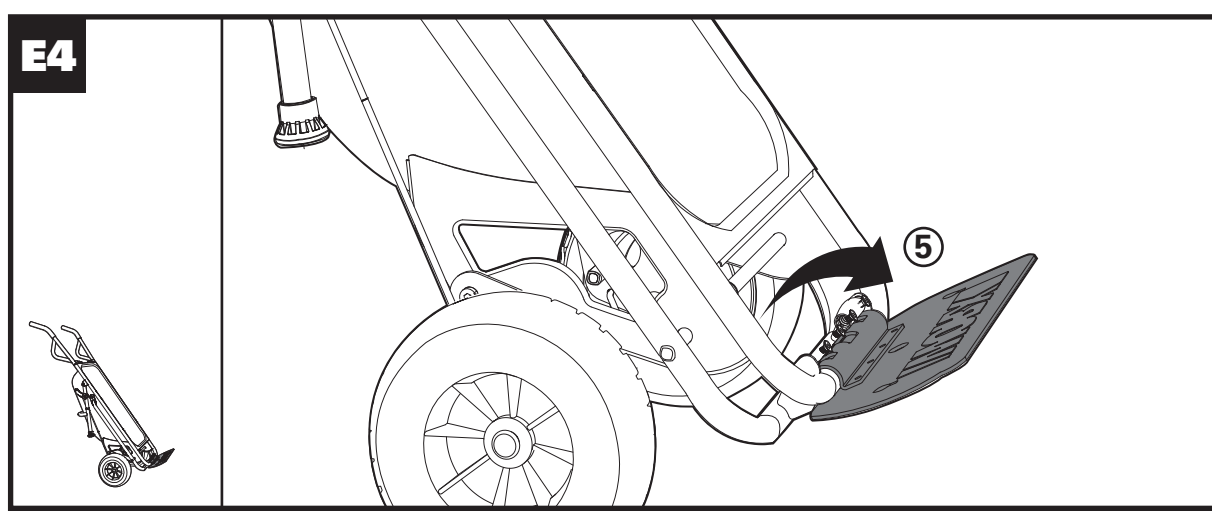
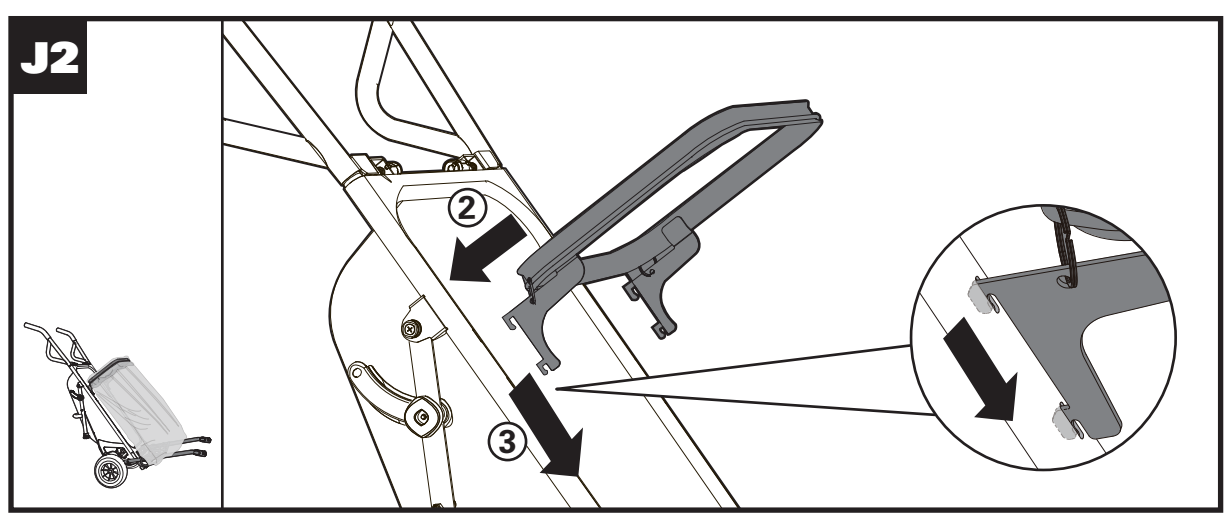
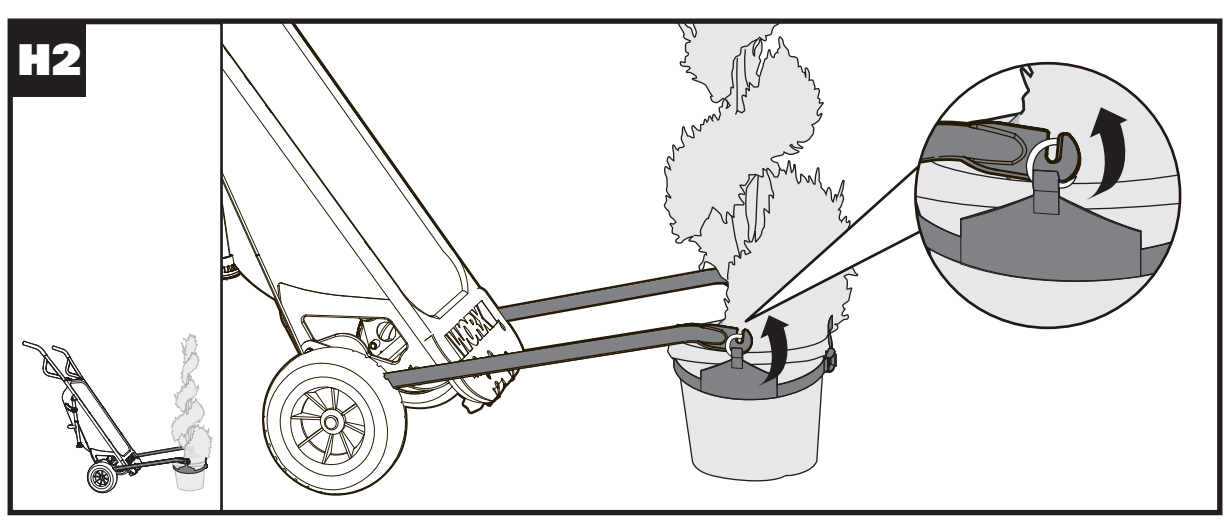
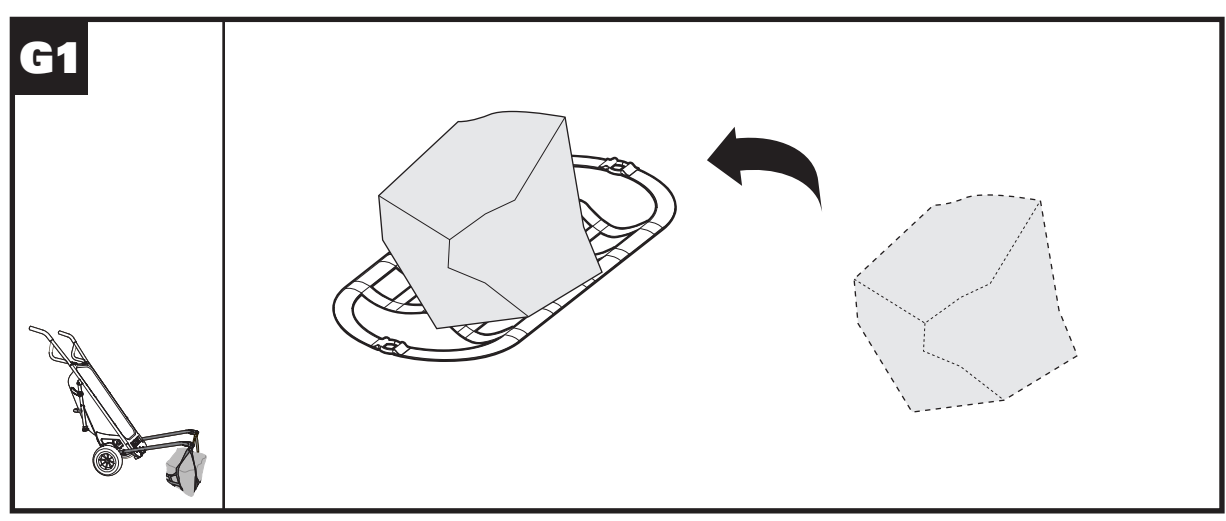
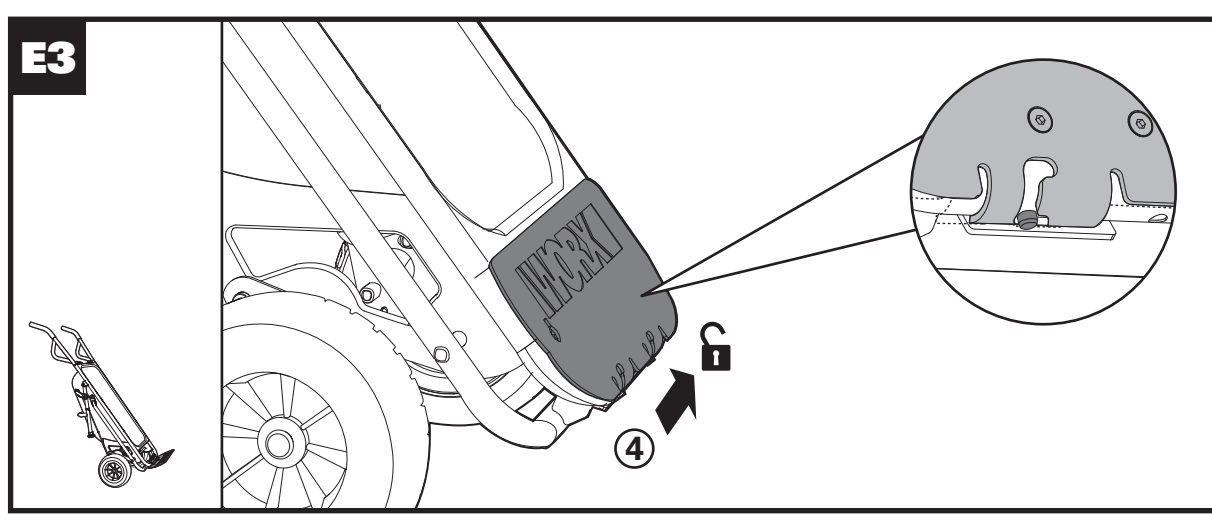
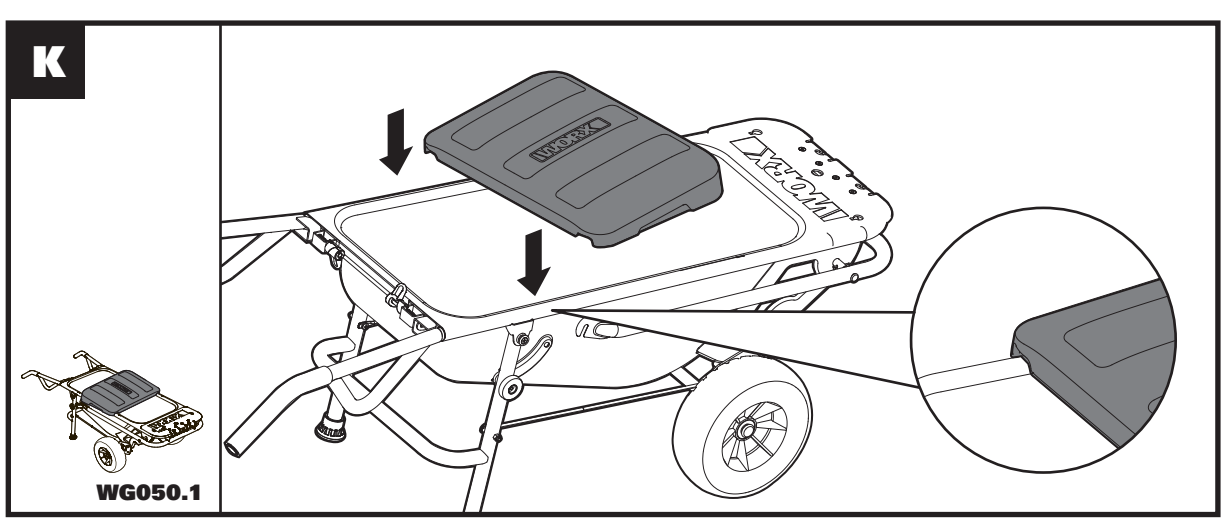
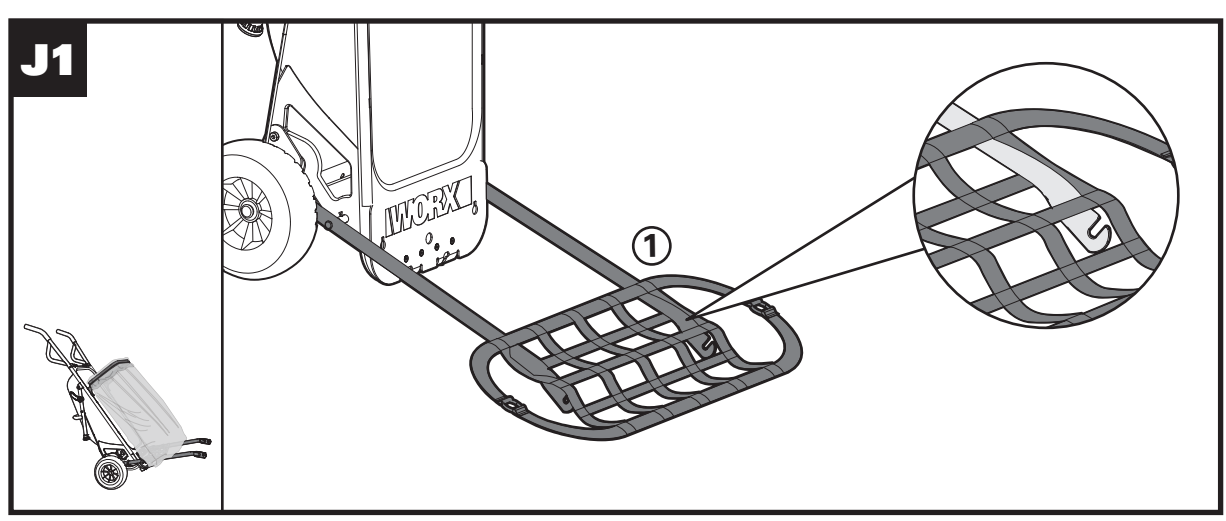
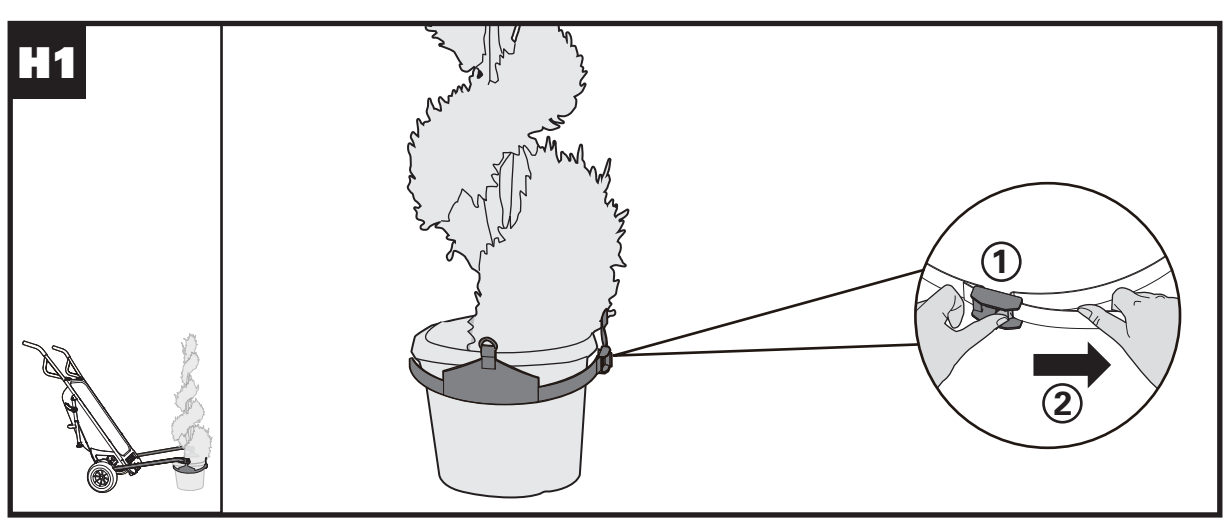
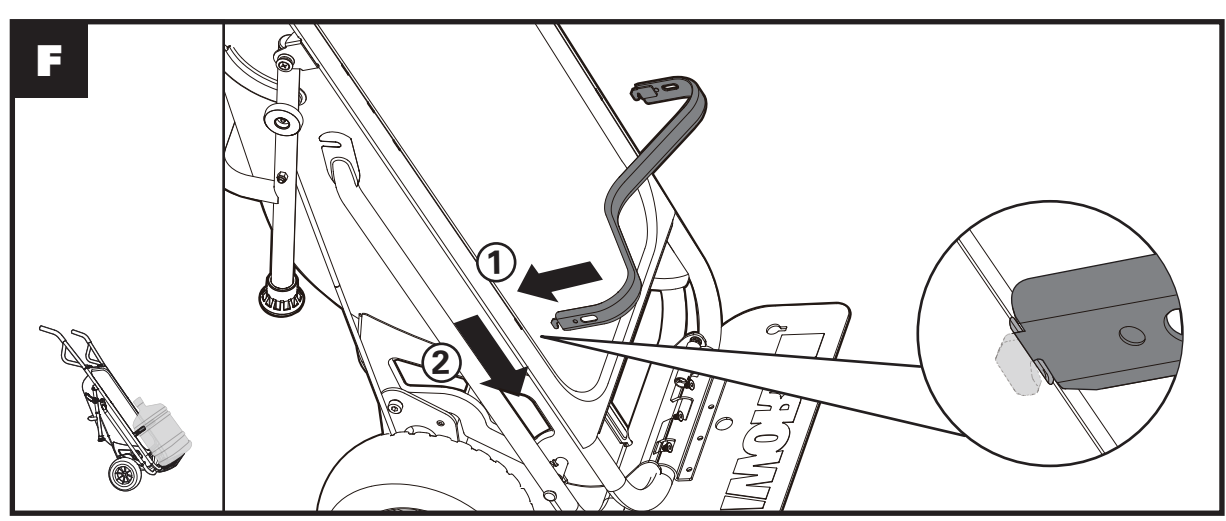
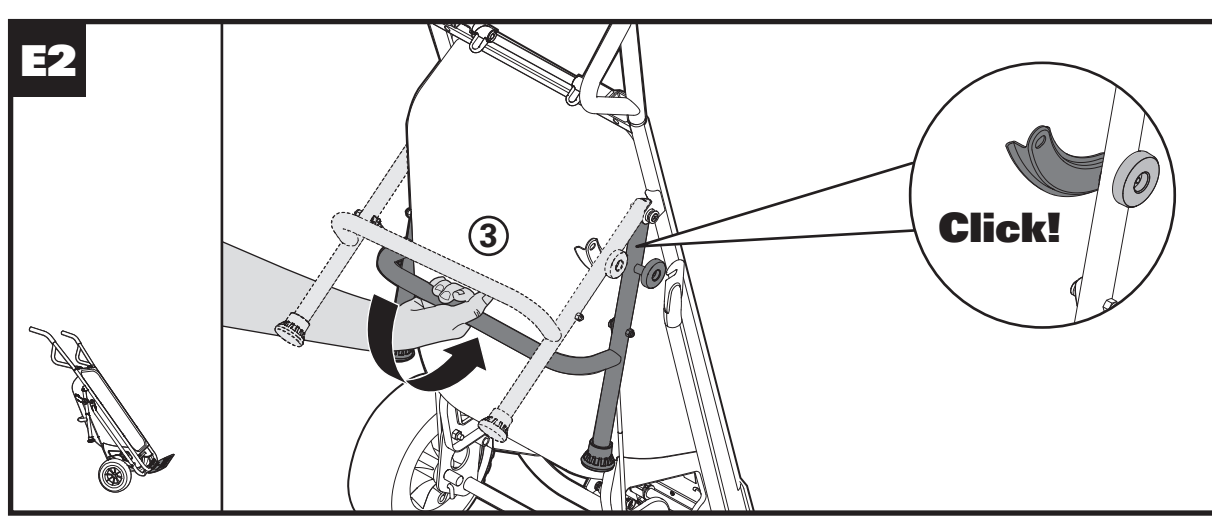
AEROCART™



Included with Model WG050.1 only.



HELPLINE NUMBER 1-866-354-WORX (9679) **WG050 WG050.1**



⚠️ WARNING: This product may contain lead, phthalate or other chemicals known to the State of California to cause cancer, birth defects and other reproductive harm. Please wash your hands after use.

1. RIGHT HANDLE
2. HANDLE LOCKING LEVER
3. LEG
4. LEG LOCK KNOB
5. WHEEL
6. EXTENSION ARM
7. DOLLY FLAP PLATE
8. CYLINDER HOLDER
9. ELASTIC CORD
10. BAG HOLDER
11. LEFT HANDLE
12. PLANT MOVER STRAP
13. ROCK MOVER MESH
14. SEAT (ONLY FOR WG050.1)
15. WHEEL SHAFT (See Fig. A)
16. SHAFT LOCK PIN (See Fig. A)

MAX LOADING		
Extended Dolly	80lbs (36kg)	See Fig. I
Wheelbarrow	300lbs (136kg)	See Fig. II
Dolly	300lbs (136kg)	See Fig. III
Cylinder Holder	80lbs (36kg)	See Fig. IV
Rock Mover	80lbs (36kg)	See Fig. V
Plant Mover	80lbs (36kg)	See Fig. VI

Trailer Mover	Tongue weight 100lbs (45kg) Trailer weight 1000lbs (450kg)	See Fig. VII
Bag Holder	40lbs (18kg)	See Fig. VIII
Seat	300lbs (136kg)	See Fig. IX

ACCESSORIES	WG050	WG050.1
Bag Holder	1	1
Cylinder Holder	1	1
Rock Mover Mesh	1	1

ACCESSORIES	WG050	WG050.1
Bag Holder	1	1
Cylinder Holder	1	1
Rock Mover Mesh	1	1

ACCESSORIES	WG050	WG050.1
Bag Holder	1	1
Cylinder Holder	1	1
Rock Mover Mesh	1	1

pot penche plus d’un côté, reposez le pot sur le sol et repositionnez les boucles métalliques.

- Remarque: Si la plante est très grande ou a un centre de gravité élevé, et continue de s’incliner, une deuxième personne sera nécessaire pour aider à déplacer le pot.

Attelage de remorque (Voir Fig I)

Cette fonction vous permet de déplacer des petites remorques avec facilité.

REMARQUE: La boule d’attelage de la remorque n’est pas fournie et doit être achetée séparément.

- Mettez l'AeroCart™ en mode chariot.
- Localisez le trou dans le rabat du chariot.
- Visez la boule d’attelage de la remorque (non incluse).
- Reliez jusqu’à la langue de la remorque.
- Levez ou baissez la langue de la remorque de sorte qu’elle soit à environ 8 pouces du sol.
- Soulez les poignées de l'AeroCart™ pour placer la boule dans l’attelage.
- Appuyez sur les poignées, de sorte que la langue de la remorque quitte le sol.
- Poussez ou tirez la remorque jusqu’à l’emplacement souhaité.

⚠️ AVERTISSEMENT: NE TENTEZ PAS DE DÉPLACER LA REMORQUE SUR UNE PENTE ABRUPTTE.

Support de sac (Voir Fig J1, J2, J3)

Le support de sac est utile pour collecter des feuilles ou d’autres débris.

- Abaissez les bras d’extension.
- Faites glisser le filet de transport de rochers sur les bras d’extension.
- Attachez le support de sac à l'AeroCart™.
- Placez un sac de plastique ou un sac en papier sur le support de sac et repliez les bords du sac autour du rebord du support de sac.
- Fixez le sac en position à l’aide du cordon élastique fixé sur le pourtour.
- Assurez-vous que le fond du sac est positionné de telle sorte qu’il est soutenu par le filet de transport de rochers.

Siège (seulement pour le modèle WG050.1) (Voir Fig. K)

En mode fourgon ou brouette, utilisez le siège fixé pour vous assoir et mettre en place des éléments, ou pour prendre un repos.

- Assurez-vous que l'AeroCart™ est placé sur un sol stable.
- Sur la face inférieure du siège se trouvent de longues rainures.
- Placez le siège sur l'AeroCart™ de sorte que les rainures se trouvent sur le rebord du boîtier de l'AeroCart™.
- Assurez-vous que le siège est stable avant de vous assoir dessus.

ACCESSOIRES	WG050	WG050.1
Support de sac	1	1
Porte-cylindre	1	1
Filet de transport de rocher	1	1
Courroie de transport de plante	1	1
Siège	/	1

ACCESSOIRES	WG050	WG050.1
Support de sac	1	1
Porte-cylindre	1	1
Filet de transport de rocher	1	1
Courroie de transport de plante	1	1
Siège	/	1

ACCESSOIRES	WG050	WG050.1
Support de sac	1	1
Porte-cylindre	1	1
Filet de transport de rocher	1	1
Courroie de transport de plante	1	1
Siège	/	1

ACCESSOIRES	WG050	WG050.1
Support de sac	1	1
Porte-cylindre	1	1
Filet de transport de rocher	1	1
Courroie de transport de plante	1	1
Siège	/	1

ACCESSOIRES	WG050	WG050.1
Support de sac	1	1
Porte-cylindre	1	1
Filet de transport de rocher	1	1
Courroie de transport de plante	1	1
Siège	/	1

ACCESSOIRES	WG050	WG050.1
Support de sac	1	1
Porte-cylindre	1	1
Filet de transport de rocher	1	1
Courroie de transport de plante	1	1
Siège	/	1

ACCESSOIRES	WG050	WG050.1
Support de sac	1	1
Porte-cylindre	1	1
Filet de transport de rocher	1	1
Courroie de transport de plante	1	1
Siège	/	1

ACCESSOIRES	WG050	WG050.1
Support de sac	1	1
Porte-cylindre	1	1
Filet de transport de rocher	1	1
Courroie de transport de plante	1	1
Siège	/	1

ACCESSOIRES	WG050	WG050.1
Support de sac	1	1
Porte-cylindre	1	1
Filet de transport de rocher	1	1
Courroie de transport de plante	1	1
Siège	/	1

ACCESSOIRES	WG050	WG050.1
Support de sac	1	1
Porte-cylindre	1	1
Filet de transport de rocher	1	1
Courroie de transport de plante	1	1
Siège	/	1

ACCESSOIRES	WG050	WG050.1
Support de sac	1	1
Porte-cylindre	1	1
Filet de transport de rocher	1	1
Courroie de transport de plante	1	1
Siège	/	1

ACCESSOIRES	WG050	WG050.1
Support de sac	1	1
Porte-cylindre	1	1
Filet de transport de rocher	1	1
Courroie de transport de plante	1	1
Siège	/	1

ACCESSOIRES	WG050	WG050.1
Support de sac	1	1
Porte-cylindre	1	1
Filet de transport de rocher	1	1
Courroie de transport de plante	1	1
Siège	/	1

ACCESSOIRES	WG050	WG050.1
Support de sac	1	1
Porte-cylindre	1	1
Filet de transport de rocher	1	1
Courroie de transport de plante	1	1
Siège	/	1

ACCESSOIRES	WG050	WG050.1
Support de sac	1	1
Porte-cylindre	1	1
Filet de transport de rocher	1	1
Courroie de transport de plante	1	1
Siège	/	1

ACCESSOIRES	WG050	WG050.1
Support de sac	1	1
Porte-cylindre	1	1
Filet de transport de rocher	1	1
Courroie de transport de plante	1	1
Siège	/	1

ACCESSOIRES	WG050	WG050.1
Support de sac	1	1
Porte-cylindre	1	1
Filet de transport de rocher	1	1
Courroie de transport de plante	1	1
Siège	/	1

ACCESSOIRES	WG050	WG050.1
Support de sac	1	1
Porte-cylindre	1	1
Filet de transport de rocher	1	1
Courroie de transport de plante	1	1
Siège	/	1

ACCESSOIRES	WG050	WG050.1
Support de sac	1	1
Porte-cylindre	1	1
Filet de transport de rocher	1	1
Courroie de transport de plante	1	1
Siège	/	1

ACCESSOIRES	WG050	WG050.1
Support de sac	1	1
Porte-cylindre	1	1
Filet de transport de rocher	1	1
Courroie de transport de plante	1	1
Siège	/	1

ACCESSOIRES	WG050	WG050.1
Support de sac	1	1
Porte-cylindre	1	1
Filet de transport de rocher	1	1
Courroie de transport de plante	1	1
Siège	/	1

ACCESSOIRES	WG050	WG050.1
Support de sac	1	1
Porte-cylindre	1	1
Filet de transport de rocher	1	1
Courroie de transport de plante	1	1
Siège	/	1

ACCESSOIRES	WG050	WG050.1
Support de sac	1	1
Porte-cylindre	1	1
Filet de transport de rocher	1	1
Courroie de transport de plante	1	1
Siège	/	1

ACCESSOIRES	WG050	WG050.1
Support de sac	1	1
Porte-cylindre	1	1
Filet de transport de rocher	1	1
Courroie de transport de plante	1	1
Siège	/	1

ACCESSOIRES	WG050	WG050.1
Support de sac	1	1
Porte-cylindre	1	1
Filet de transport de rocher	1	1
Courroie de transport de plante	1	1
Siège	/	1

ACCESSOIRES	WG050	WG050.1
Support de sac	1	1
Porte-cylindre	1	1
Filet de transport de rocher	1	1
Courroie de transport de plante	1	1
Siège	/	1

ACCESSOIRES	WG050	WG050.1
Support de sac	1	1
Porte-cylindre	1	1
Filet de transport de rocher	1	1
Courroie de transport de plante	1	1
Siège	/	1

ACCESSOIRES	WG050	WG050.1
Support de sac	1	1
Porte-cylindre	1	1
Filet de transport de rocher	1	1
Courroie de transport de plante	1	1
Siège	/	1

ACCESSOIRES	WG050	WG050.1
Support de sac	1	1
Porte-cylindre	1	1
Filet de transport de rocher	1	1
Courroie de transport de plante	1	1
Siège	/	1

ACCESSOIRES	WG050	WG050.1
Support de sac	1	1
Porte-cylindre	1	1
Filet de transport de rocher	1	1
Courroie de transport de plante	1	1
Siège	/	1

ACCESSOIRES	WG050	WG050.1
Support de sac	1	1
Porte-cylindre	1	1
Filet de transport de rocher	1	1
Courroie de transport de plante	1	1
Siège	/	1

ACCESSOIRES	WG050	WG050.1
Support de sac	1	1
Porte-cylindre	1	1
Filet de transport de rocher	1	1
Courroie de transport de plante	1	1
Siège	/	1

ACCESSOIRES	WG050	WG050.1
Support de sac	1	1
Porte-cylindre	1	1
Filet de transport de rocher	1	1
Courroie de transport de plante	1	1
Siège	/	1

ACCESSOIRES	WG050	WG050.1
Support de sac	1	1
Porte-cylindre	1	1
Filet de transport de rocher	1	1
Courroie de transport de plante	1	1
Siège	/	1

ACCESSOIRES	WG050	WG050.1
Support de sac	1	1
Porte-cylindre	1	1
Filet de transport de rocher	1	1
Courroie de transport de plante	1	1
Siège	/	1

Wheelbarrow (See Fig. D1, D2)

- Place the AeroCart™ on flat, solid ground and in the upright position before attempting to switch modes.
- Hold the product with one hand and pull the Leg Lock Knob with the other.
- Pull gently up on the wheelbarrow leg assembly. The legs will fold out, and the Leg Lock Knob will lock the leg assembly into the wheelbarrow position.
- Make sure the Leg Lock Knob clicks securely into place.

Dolly (See Fig. E1, E2, E3, E4)

- Place the AeroCart™ on flat, solid ground and in the upright position before attempting to switch modes.
- Hold the leg assembly with one hand, and pull the Leg Lock Knob with the other. (Hint: For easier release, pull up gently on the leg assembly to ease the load on the Leg Lock Knob.)
- The legs will fall back into their closed position. If necessary, gently push the legs to assist the transition.
- The Leg Lock Knob will lock the leg assembly into the dolly position.
- Make sure the Leg Lock Knob clicks securely into place.

When moving large items, boxes, or appliances the AeroCart™ uses a Dolly Flap Plate, which can support up to 300 pounds.

- Make sure that AeroCart™ is in dolly position.
- Slide Dolly Flap Plate slightly to the right to disengage latch and pull Dolly Flap Plate into open position.
- When fully open, the Dolly Flap Plate will spring into latched position.
- To close the Dolly Flap, reverse the steps above.

Cylinder Holder (See Fig. F)

The Cylinder Holder is useful for carrying large cylindrically shaped objects while in dolly position.

- Locate two slots on the main body of the AeroCart™, just above the Dolly Flap.
- Insert the AeroCart™ transform with hooks facing downward as shown. Confirm that the Cylinder Holder is securely fastened.
- Move the Dolly Flap Plate into open position.

⚠️ WARNING: Safely secure all loads. Follow manufacturer’s instructions for securing pressurized tanks or similar items.

NOTE: The objects can be fixed by a rope which goes through the two holes on the Cylinder Holder.

Rock Mover Mesh (See Fig. G1, G2)
The AeroCart™ comes with a mesh strap which is used to lift and move around awkwardly shaped and heavy objects such as rocks, bricks and other rubble up to 80 pounds.

- Place the AeroCart™ into dolly position.
- Place the Rock Mover Mesh on the ground next to the object that you will move.
- Roll or place the object into the center of the Rock Mover Mesh.

- Lower the Extension Arms and connect the metal rings of the Rock Mover Mesh onto the hooks at the end of the Arms.
- Press down on both handles slowly to lift the object off the ground.
- Move the object to its desired location, and lower the object to the ground.
- Unhook the metal rings from the Extension Arms, and lift or roll the object off the Rock Mover Mesh.

Plant Mover Strap (See Fig. H1, H2)
The AeroCart™ comes with a Plant Mover Strap which when used with the Extension Arms can lift and carry almost any pot weighing up to 80 pounds.

NOTE: When moving pots, the center of gravity must be below the strap. If the center of gravity is above the strap, two people are required to move the pot. One person is required to operate the dolly and another to stabilize the potted plant keeping it upright.

- Place the AeroCart™ into dolly position and lower the Extension Arms.
- Fasten the Plant Mover Strap around the pot and tighten securely. Position the strap towards the top of the pot so most of the pot’s weight is below it.
- On the strap, slide the two metal loops to opposite sides of the pot.
- While holding the AeroCart™ with one hand, use the other to attach the metal loops of the Plant Mover Strap to the Extension Arm.
- Using both hands, press down very slowly on the handles, lifting the pot off the ground. If the pot is leaning more to one side, lower the pot back to the ground and reposition the metal loops.
- Note: If the plant is very tall or has a high center of gravity, and continues to lean, a second person is needed to assist with the moving of the pot.

Trailer Mover (See Fig. I)

This function allows you to move small trailers with ease.

NOTE: The trailer hitch ball is not supplied and must be purchased separately.

- Transform the AeroCart™ into the dolly position.
- Locate the hole in the Dolly Flap.
- Screw on the trailer hitch ball (not included).
- Wheel up to the tongue of the trailer.
- Raise or lower the tongue of the trailer so that it is approximately 8 inches from the ground.
- Lift up the handles of the AeroCart™ to position the ball under the hitch.
- Press down on the handles, so that the tongue of the trailer lifts off the ground.
- Push or pull the trailer into the desired location.

⚠️ WARNING: DO NOT ATTEMPT TO MOVE A TRAILER ON A STEEP INCLINE

Bag Holder (See Fig. J1, J2, J3)

The Bag Holder is helpful when collecting leaves or other debris.

- Lower the Extension Arms.
- Slide the Rock Mover Mesh onto the Extension Arms.

- Attach the Bag Holder to the AeroCart™.
- Place a plastic or paper bag onto the Bag Holder and fold the edges of the bag over the rim.
- Secure the bag in place using the Elastic Cord attached to the rim.
- Make sure the bottom of the bag is positioned so that it is supported by the Rock Mover Mesh.

Seat (Only for WG050.1) (See Fig. K)
While in wagon or wheelbarrow mode, use the attachable seat to sit and organize items, or take a rest.

- Make sure the AeroCart™ is on stable ground.
- On the underside of the seat are long grooves.
- Place the seat on the AeroCart™ so that the grooves are on the rim of the AeroCart™’s body.
- Confirm the seat is stable before sitting on it.

⚠️ VERTISSEMENT: Ce produit contient peut-être du plomb, des phtalates ou d’autres produits chimiques reconnus par l’État de Californie pour causer le cancer, des malformations congénitales et d’autres problèmes de reproduction. Veuillez vous laver les mains après l’utilisation.

ACCESSOIRES	WG050	WG050.1
Support de sac	1	1
Porte-cylindre	1	1
Filet de transport de rocher	1	1
Courroie de transport de plante	1	1
Siège	/	1

N'utilisez que les accessoires compatibles à cet util. Les informations des accessoires peuvent être trouvées sur l'emballage du produit, chez un détaillant WORX ou sur notre site Web www.worxtools.com ou en appelant au 1-866-354-WORX(9679)