

100 Sq. Ft. / Roll



floorMuffler® ^{ultraSeal}

Premium Floor Underlayment

FloorMuffler® UltraSeal Flooring Underlayment is a **Premium Grade** highly engineered, cross-linked polypropylene foam with the UltraSeal self-sealing lip and tape system. FloorMuffler® UltraSeal is the ideal choice for most laminate, engineered and solid hardwood flooring applications. FloorMuffler® UltraSeal can be used for floating and double glue down installations in both residential and commercial applications.

- ◆ **Provides superior through-the-floor and footfall noise reduction** that exceeds requirements of Uniform Building Codes standards. (IIC up to 74; STC up to 73; ΔIIC up to 25)*
- ◆ **Self-sealing lip and tape system** allows for easy installation.
- ◆ **Provides superior moisture protection.** Exceeds industry standards by over 700%. (.3 lbs./1000 ft²/24 hours)
- ◆ **Proprietary Advanced Cell Technology™.** The most robust compression characteristics on the market help to insure the integrity of the tongues and grooves.
- ◆ **Mold and mildew resistant.**
- ◆ **Resilient, nonreactive and fully recyclable** – making it an environmentally friendly option.
- ◆ **Surpasses the Indoor Air Quality emissions requirement for California's Section 01350** – the most stringent volatile organic compound (VOC) emissions standard in North America.
- ◆ **Selected by award winning researchers** as "The World's Greatest."

* Test results and sound characteristics may vary due to common variables such as manufacturing tolerances, environmental conditions and raw materials, as well as testing protocols and laboratory facilities. Please refer to our website at www.floormuffler.com for more information.

LIMITED
LIFETIME
WARRANTY

For more information about FloorMuffler® UltraSeal please contact us at 800-440-6008 or visit us at www.floormuffler.com.



www.floormuffler.com



SKU # 1000006267



8 51312 00406 0



Designed and assembled at:
Diversified Industries
121 High Hill Road
Swedesboro, NJ 08085
Using USA and imported components

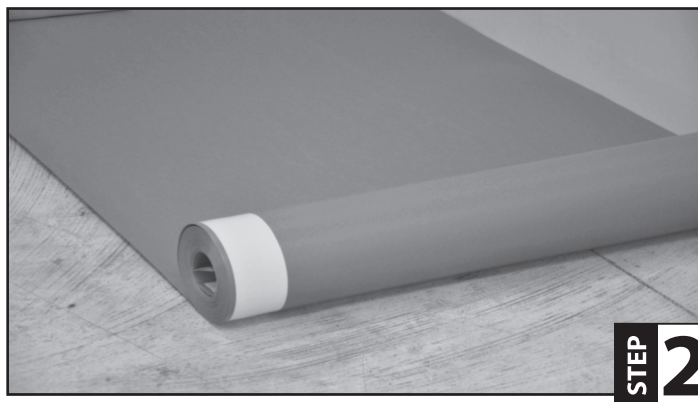
LABEL 6006698

***Prior to installation of the underlayment, follow the flooring manufacturer's recommendations and/or instructions concerning site conditions and installation.**


STEP 1

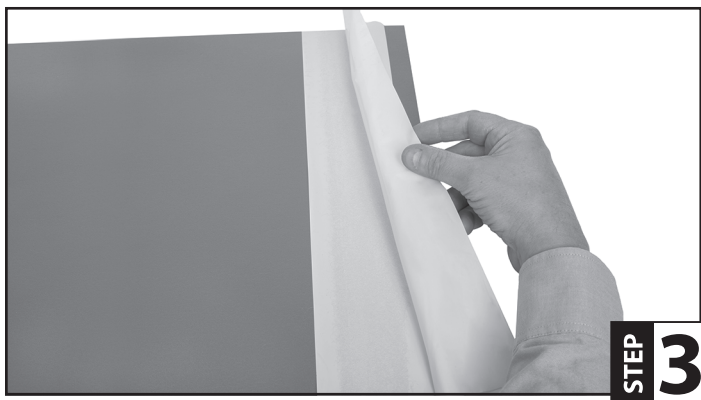
Step 1:

Make sure the subfloor is structurally sound, level and is free of dust and debris. The deflection cannot exceed $L/360$ of the span under intended live and dead loads. Check for protruding nails and/or defects in the subfloor. If installing over concrete, the concrete must be dry with moisture emission rates that do not exceed 3lbs. per 1000 square feet per 24 hours as measured by the Anhydrous Calcium Chloride Test.


STEP 2

Step 2:

Start in a corner with tape strip side next to wall and overlapping film toward the open room. Install the FloorMuffler® UltraSeal (film side down) parallel to the wall in the opposite direction as you plan to install the flooring planks. When installing the FloorMuffler UltraSeal, leave at least 2" going up the wall.


STEP 3

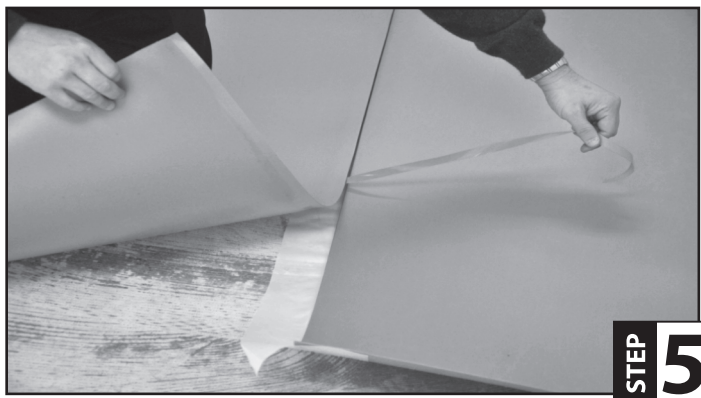
Step 3:

Be sure to unfold the film, extending it 3" from the foam.


STEP 4

Step 4:

Roll out the next roll of FloorMuffler® UltraSeal in the same manner, making sure that the foam seams are butted together. Be sure to overlap only the moisture barrier lip and not the foam pad.


STEP 5

Step 5:

Remove the adhesive liner and adhere the foam to the film overlap.


STEP 6

Step 6:

Install the flooring per the flooring manufacturer's instructions.