



# Old Fashioned Gumball Machine



**MODEL: 6260 Gumball Machine with Stand**  
**6265 15 Inch Gumball Machine**  
**6270 11 Inch Gumball Machine**

## **ASSEMBLY & INSTRUCTIONS**

# Old Fashioned Gumball Machine ASSEMBLY AND USE

## Enjoying Your Old Fashioned Gumball Machine

Your stand-alone gumball machine comes fully assembled. If you purchased the gumball machine with stand, please visit page 4 of this manual for instructions on stand assembly. Your new machine is manufactured with the highest quality, non-toxic materials available and will give you and your family years upon years of enjoyment!

It accepts quarters, dimes, nickels and pennies (some foreign coins too), is preset to dispense with coins, though you can convert your machine to dispense freely (see below).

### CLEANING:

You can clean all outer parts of your machine with water and a very mild cleaner such as dish soap. **DO NOT CLEAN INNER MECHANISMS AS THIS WILL REMOVE LUBRICANTS NECESSARY FOR OPERATION.**

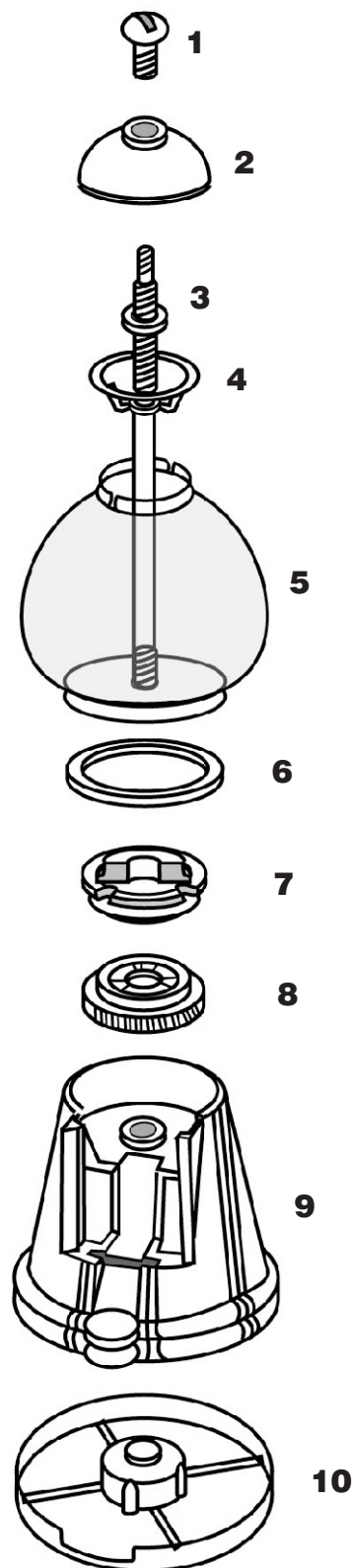
### FILLING YOUR GLOBE:

Your machine will dispense gumballs, peanuts, hard candies, etc....and to fill your globe, first:

1. Unscrew the cap lock (1) on the very top of the machine.
2. Next, remove the cap (2) on top of the globe (5) and fill the globe.
3. Replace cap and lock, being careful not to overtighten.

Should you ever need to remove or replace your globe, remove the cap lock, cap, nut (3), ring and gasket (5) and then gently remove the globe. To reassemble, repeat in reverse order.

To collect coins, remove the baseplate (10) from the machine body (9).



# Old Fashioned Gumball Machine ASSEMBLY AND USE

## Enjoying Your Old Fashioned Gumball Machine...Continued

### CONTROLLING CANDY FLOW:

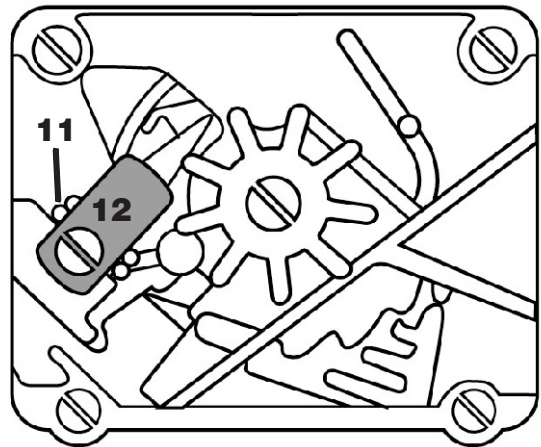
You may wish to alter the rate at which your product is dispensed. To do so:

1. Remove the cap lock, cap, nut, ring and gasket and the brush-off plate (6).
2. Next, adjust the dispensing wheel. If your wheel is not able to turn, your model may have the wheel held in place with set screws. Simply loosen them enough for the wheel to turn, adjust and then re-tighten.
3. Reassemble. **Note:** when reassembling, make sure the brush-off plate covers the candy chute.

### HOW TO ALLOW YOUR MACHINE TO DISPENSE FREELY:

If you do not want to require your machine to be coin-operated, first:

1. Disassemble the machine.
2. Lay the coin mechanism on its face, coin slot down.
3. Take out the flat black spring (11) and brass coin dog arm (12) from the back of the coin mechanism and set aside. Do not discard, as you may wish to convert back to coin operation in the future.



### GENERAL PRECAUTIONS:

**ALWAYS USE CAUTION WHEN REASSEMBLING MACHINE. DO NOT OVERTIGHTEN SCREWS, ESPECIALLY NEAR GLOBE AS GLOBE MAY BE DAMAGED.**

**ALWAYS WATCH SMALL CHILDREN WHEN AROUND MACHINE. NEVER LEAVE UNATTENDED AROUND SMALL CHILDREN WHO MAY BE SUSCEPTIBLE TO CHOKING.**

**USE CAUTION WHEN FILLING GLOBE, POUR GENTLY TO LESSEN IMPACT ON GLASS.**

**NEVER CLEAN WITH ABRASIVE CLEANERS. USE MILD DETERGENT AND WATER.**

# Old Fashioned Gumball Machine ASSEMBLY AND USE

## Gumball Machine Stand Assembly

If you have purchased model 6260 Gumball Machine with Stand you will need to do some very minor assembly to put the stand together.

To assemble your stand:

1. First screw in the top column into the bottom column.
2. Next, attach each leg to the base with a nut and bolt provided as shown. Use a screwdriver, but do not overtighten.
3. Lastly, screw the connected columns into the base. Your stand is now fully assembled and ready to screw in the globe on top.



For more great popcorn machines, snow cone machines, ice shavers and concession supplies, please visit [www.greatnorthernpopcorn.com](http://www.greatnorthernpopcorn.com).

