

**OPERATOR'S MANUAL  
AND PARTS LIST  
MODEL GRSB150/GRSB250  
SINGLE BLOW JOIST NAILERS**



Distributed by/Distribuido por/Imported by/Importé par:

**PRIME**SOURCE<sup>®</sup>  
BUILDING PRODUCTS, INC.

and  
BUILDING PRODUCTS CANADA CORPORATION  
are Itochu Companies

Carrollton, Texas 75006 USA  
[www.grip-rite.com](http://www.grip-rite.com)

**IMPORTANT SAFETY INFORMATION**

You must read this entire manual and familiarize yourself with all safety, operating, and service instructions before loading, handling, or using your tool. When used correctly, pneumatic fastening tools provide a lightweight, powerful, and safe means of fastening. Used improperly, these tools can cause serious injury to you and those around you.

 **DANGER**

This tool is intended only for driving nails through pre-punched holes in metal connector plates. Never attempt to drive a nail directly into any metal plate or any other metal surface that does not have pre-punched or pre-formed nailing holes. Misuse can result in serious injury to operator and bystanders from deflected nails. Only use nails approved for use in the nailer model being operated. Follow connector plate manufacturer's nailing instructions.

**TABLE OF CONTENTS ----- 3**

**GRSB150 SPECIFICATIONS ----- 4**

**GRSB150 Fastener Selection Chart----- 4**

**GRSB250 SPECIFICATIONS ----- 5**

**GRSB250 Fastener Selection Chart----- 5**

**SAFETY ----- 6**

**TOOL PARTS ----- 10**

**PART DESCRIPTIONS ----- 11**

**OPERATION ----- 12**

**Loading Fasteners ----- 12**

**Driving Nails ----- 13**

**Air Deflector Adjustment ----- 14**

**MAINTENANCE ----- 15**

**Lubrication ----- 15**

**Cleaning ----- 15**

**Trigger Check ----- 15**

**GRSB150 PARTS SCHEMATIC ----- 16**

**GRSB150 PARTS LIST ----- 17**

**GRSB250 PARTS SCHEMATIC ----- 18**

**GRSB250 PARTS LIST ----- 19**

**TROUBLESHOOTING ----- 20**

**TOOL CHECKS ----- 21**

**WARRANTY ----- 22**

# GRSB150 SPECIFICATIONS

## SPECIFICATIONS

<b>MODEL</b>	<b>GRSB150 JOIST NAILER</b>
<b>FASTENER LENGTH</b>	1 1/2" (38 mm )
<b>FASTENER DIAMETER</b>	.131 - .148 dia. (3.3 - 3.8 mm) Round Head
<b>FASTENER TYPE</b>	30° - 34° Metal Connector Nails
<b>COLLATION</b>	Paper Tape
<b>MAGAZINE CAPACITY</b>	33 Nails
<b>MAX AIR PRESSURE</b>	120 psi (8.3 bar)
<b>MIN AIR PRESSURE</b>	100 psi (6.9 bar)
<b>TOOL WEIGHT</b>	4.4 lbs. (2 kg)
<b>TOOL LENGTH</b>	14.75" (37.5 cm)
<b>TOOL HEIGHT</b>	10.5" (37.5 cm)
<b>TOOL WIDTH</b>	4.25" (10.8 cm)
<b>TRIGGER TYPE</b>	SEQUENTIAL
<b>AIR INLET</b>	1/4 NPT
<b>AIR CONNECTION</b>	MALE QUICK CONNECT
<b>LUBRICATION</b>	10W Air Tool Oil (Provided)

*For best results, use only Grip-Rite™ collated fasteners.*

FASTENER SELECTION CHART					
SIZE	BOX QTY.	BRIGHT SKU	EXT. GALV. SKU	FITS SB150	FITS SB250
1-1/2 x .131" (38 x 3.4 mm)	4M	GRJH4DZHT	GRJH4DZHG	X	X
1-1/2 x .148" (38 x 3.8 mm)	2M	GRJH4DCHT2	GRJH4DCHG2	X	X
1-1/2 x .148" (38 x 3.8 mm)	3M	GRJH4DCHT	GRJH4DCHG	X	X

# GRSB250 SPECIFICATIONS

## SPECIFICATIONS

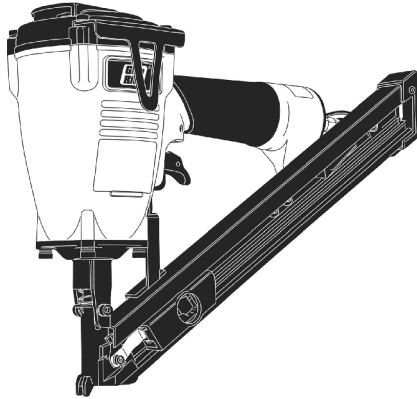
<b>MODEL</b>	<b>GRSB250 JOIST NAILER</b>
<b>FASTENER LENGTH</b>	1 1/2" & 2 1/2" (38 mm - 63.5 mm )
<b>FASTENER DIAMETER</b>	.131 - .162 dia. (3.3 - 4.2 mm) Round Head
<b>FASTENER TYPE</b>	30° - 34° Metal Connector Nails
<b>COLLATION</b>	Paper Tape
<b>MAGAZINE CAPACITY</b>	33 Nails
<b>MAX AIR PRESSURE</b>	120 psi (8.3 bar)
<b>MIN AIR PRESSURE</b>	100 psi (6.9 bar)
<b>TOOL WEIGHT</b>	5.7 lbs. (2.6 kg)
<b>TOOL LENGTH</b>	13.6" (34.5 cm)
<b>TOOL HEIGHT</b>	14.0" (35.6 cm)
<b>TOOL WIDTH</b>	4.25" (10.8 cm)
<b>TRIGGER TYPE</b>	SEQUENTIAL
<b>AIR INLET</b>	1/4 NPT
<b>AIR CONNECTION</b>	MALE QUICK CONNECT
<b>LUBRICATION</b>	10W Air Tool Oil (Provided)

*For best results, use only Grip-Rite™ collated fasteners.*

FASTENER SELECTION CHART					
SIZE	BOX QTY.	BRIGHT SKU	EXT. GALV. SKU	FITS SB150	FITS SB250
1-1/2 x .131" (38 x 3.4 mm)	4M	GRJH4DZHT	GRJH4DZHG	X	X
1-1/2 x .148" (38 x 3.8 mm)	2M	GRJH4DCHT2	GRJH4DCHG2	X	X
1-1/2 x .148" (38 x 3.8 mm)	3M	GRJH4DCHT	GRJH4DCHG	X	X
2-1/2 x .148" (64 x 3.8 mm)	2M	GRJH8DCHT	GRJH8DCHG		X
2-1/2 x .162" (64 x 4.2 mm)	4M	GRJH8162HT	GRJH8162HT		X




**SAFETY LABELS**

This pneumatic fastening tool includes a warning label to help remind you of important safety information when operating the tool. The safety label must be legible at all times, and must be replaced if it becomes worn or damaged.



**SAFETY SYMBOLS**

These safety symbols provide a visual reminder of basic safety rules, and the personal injury hazard that may arise if all safety and operating instructions are not followed. Make sure you understand the meaning of each of these symbols, and protect yourself and others by obeying all safety and operating instructions.

SYMBOL	DESCRIPTION
	<p><b>READ THE MANUAL</b> - The manual contains important safety and operating instructions that must be followed. All tool users must read the manual before using the tool.</p>
	<p><b>WEAR SAFETY GLASSES</b> - Tool operator and bystanders must wear safety glasses with side shield that meet ANSI Z87.1 requirements.</p>
	<p><b>RISK OF PERSONAL INJURY</b> - Failure to follow all safety and operating instructions, or misuse of the tool, can result in serious injury to tool operator and bystanders.</p>

**SAFETY INSTRUCTIONS**



**WEAR SAFETY GLASSES**

Always wear safety glasses with side shields that meet ANSI Z87.1 requirements when operating the tool. Make sure all others in work area wear safety glasses.



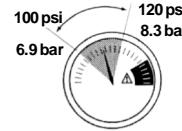
**WEAR HEARING PROTECTION**

Wear hearing protection to protect your hearing from noise. Prolonged exposure to loud noise can result in hearing loss.



**NEVER OPERATE THE TOOL WITH OXYGEN OR OTHER BOTTLED GASES**

Oxygen and other reactive or high-pressure bottled gases can cause the tool to explode. Use clean, dry regulated compressed air from a properly operating air compressor.



**DO NOT EXCEED MAXIMUM RECOMMENDED OPERATING AIR PRESSURE OF 120 PSI/8.6 Bar.**

Exceeding the maximum recommended air pressure can cause the tool housing to burst, or cause premature failure of components.

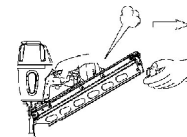


**NEVER CONNECT THE TOOL TO AN AIR SUPPLY THAT HAS THE POTENTIAL TO EXCEED 180 PSI/12.4 Bar.**

Using a regulated air supply with a line or tank pressure greater than 180 psi can cause the tool to burst if the air line regulator fails suddenly.

**USE AN AIR HOSE RATED FOR 180 PSI/12.4 Bar OR GREATER**

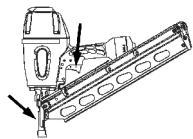
Always use air hose rated to handle 180 psi or the maximum potential pressure of the air supply.



**ONLY USE A RELIEVING-TYPE AIR COUPLING IN THE TOOL AIR INLET OPENING.**

Use of a non-relieving air coupling on the tool can trap air inside the tool housing, and allow the tool to drive a fastener even after the air hose has been disconnected.

## SAFETY INSTRUCTIONS



**DO NOT ATTEMPT TO OPERATE THE TOOL IF THE TOOL'S OPERATING CONTROLS HAVE BEEN MODIFIED OR ARE NOT WORKING PROPERLY.**

Attempting to use a tool with modified or malfunctioning trigger or workpiece contact can result in a fastener being driven unintentionally.

**USE CORRECT FASTENERS**

Only use the correct fastener for the tool. Using fasteners with incorrect specifications can jam the tool or cause serious injuries.

**USE THE CORRECT FASTENERS FOR THE APPLICATION.**

Using the wrong fasteners can cause the workpiece to split and allow the fastener to fly free.

**KEEP TOOL POINTED IN A SAFE DIRECTION WHEN LOADING FASTENERS.**

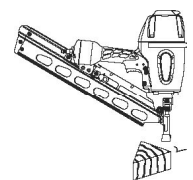
Never point the tool at yourself or anyone else when loading fasteners.

**DO NOT LOAD TOOL WITH TRIGGER OR WORKPIECE CONTACT DEPRESSED.**

Depressing the trigger or workpiece contact during loading can result in an unintentional fastener drive if both devices are accidentally actuated at the same time.

**KEEP FINGER OFF TRIGGER UNTIL TOOL IS IN POSITION TO DRIVE A FASTENER.**

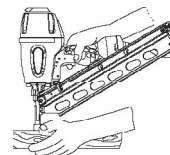
An unexpected bump or sudden contact with your body or that of a bystander can result in serious injuries.



**AVOID DRIVING FASTENERS INTO KNOTS, ON TOP OF OTHER FASTENERS, AT WORKPIECE EDGES, OR INTO BRITTLE MATERIALS.**

Driving fasteners into extremely hard materials, or driving into workpiece edges, can cause fasteners to deflect away from the workpiece. Flying fasteners can cause serious injuries.

## SAFETY INSTRUCTIONS



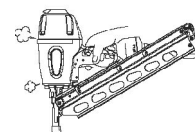
**KEEP HANDS AND BODY PARTS AWAY FROM AREA BEING FASTENED.**

Fasteners can deflect and turn as they are being driven into the workpiece, and penetrate fingers, hands, and other body parts that may be in the fastening area.



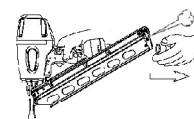
**DO NOT OVERREACH OR WORK WHILE ON UNSTABLE FOOTING**

If you lose your balance while fastening, you could drive a fastener into yourself or a bystander.



**DO NOT USE TOOL IF TOOL MALFUNCTIONS OR BEGINS LEAKING AIR.**

Operating a malfunctioning tool can result in an unexpected fastener discharge and injury to yourself or others.



**DISCONNECT THE TOOL FROM THE AIR SUPPLY TO RELOAD, CLEAR JAMS, OR PERFORM MAINTENANCE.**

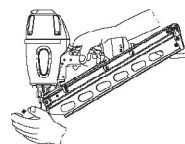
Never attempt to reload a tool, clear a jam, or perform maintenance without first disconnecting the air supply.

**NEVER LEAVE A LOADED, PRESSURIZED TOOL UNATTENDED**

A loaded, pressurized tool could be picked up or handled by someone who is unfamiliar with the tool or that has not read the tool manual.

**KEEP TOOLS OUT OF THE REACH OF CHILDREN**

Place the tool back in the tool box after use, and store the tool out of reach.

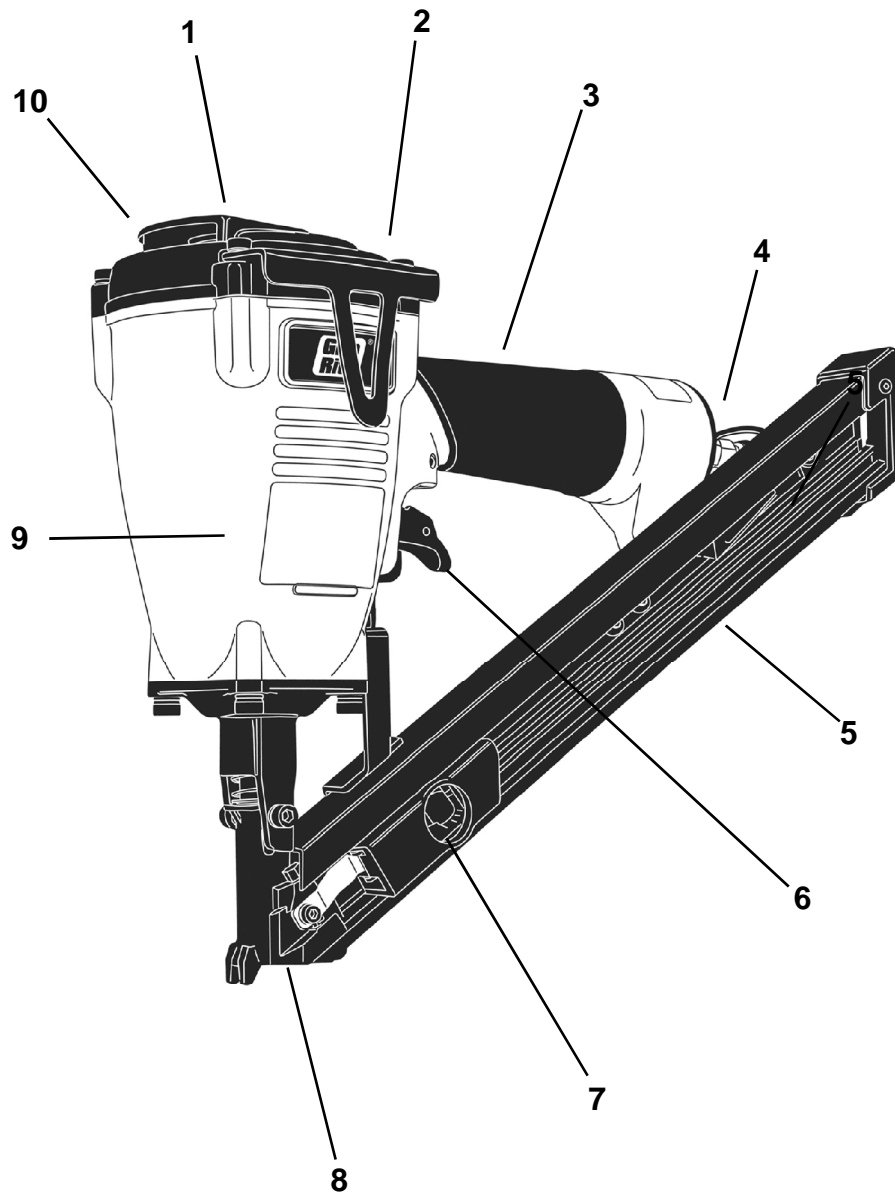


**DO NOT MODIFY TOOL**

Modifications can cause a tool to be unsafe and can cause the tool to operate improperly.

## DESCRIPTION

### TOOL PARTS



## DESCRIPTION

### PART DESCRIPTIONS

1. **360° Adjustable Air Deflector** - Tool-free adjustment blows exhaust air away from operator. 12 locking positions for secure settings.
2. **Belt Hook** - Durable tool hook slides on belt. Holds tool securely and keeps it in reach for greater productivity.
3. **Cushioned Grip** - Cushioned handgrip reduces fatigue and provides comfortable operation.
4. **Air Coupling** - Quick-disconnect male coupling allows quick connection to air hose. Dust cap keeps dirt out when tool is not in use.
5. **Rear Load Nail Magazine** - Holds fasteners securely and protects nail strips from damage. Dual loading slots on GRSB250 allow use of 1 1/2" or 2 1/2" nails
6. **Sequential Trigger** - Actuates tool only when correct trigger operating sequence is followed. Does not allow bump firing.
7. **Spring-loaded Pusher** - Provides positive fastener feeding in all tool positions.
8. **Open Nose Design** - Nail tip of first nail serves as positioning guide. No probe needed.
9. **Magnesium Tool Housing** - Light weight, durable magnesium tool housing reduces tool weight, reduces operator fatigue.
10. **Heavy Duty Cap** - Seals tool housing.

**Metric Hex Wrenches** - Included with tool to allow tightening of metric screws. Keep tools in tool case for periodic tightening of screws.

**Air Tool Oil** - Lightweight oil formulated for use in air tools provides proper lubrication to o-rings and internal parts.

**Safety Goggles** - Provide required eye protection

## LOADING FASTENERS

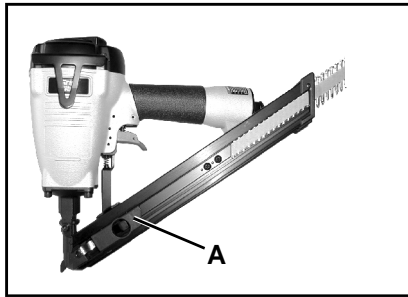
### LOADING INSTRUCTIONS

#### DANGER

A fastener can be driven unintentionally if the trigger and nosepiece/safety are activated at the same time. Always disconnect tool from air supply before loading or unloading fasteners, making adjustments, or performing any service on tool. Keep finger off trigger until nail is in driving position, on work piece, and you are ready to drive a fastener.

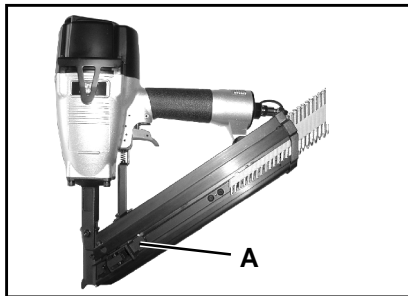
#### 1a. Model GRSB150 Only:

Insert strip of 1 1/2" long nails into rear of magazine, and allow nails to slide toward tool nose.



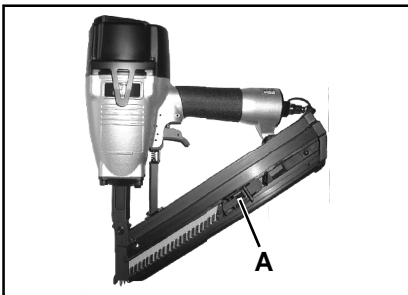
#### 1b. Model GRSB250 Only:

Insert strip of 1 1/2" long nails using lower slot or 2 1/2" nails using upper slot, and allow nails to slide toward tool nose.



#### 2. Models GRSB150/GRSB250

Depress pusher lever (A), and pull pusher back to rear of nail strip. Release lever, and slide pusher forward against nails.



3. Tool is now loaded and ready to be connected to an air supply for operation.

## DRIVING NAILS

1. Hold the tool securely using the handgrip. Keep finger off trigger until tool is in position and you are ready to drive a fastener.



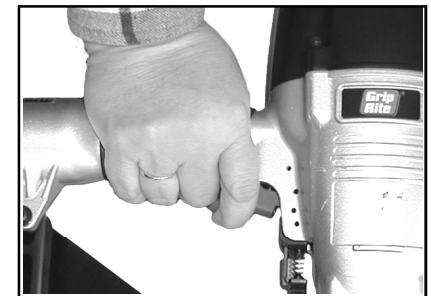
NOTE: Depressing trigger before pushing nosepiece/safety bracket against workpiece will prevent tool from actuating.

2. Position the nose of the tool on the workpiece, placing the nail in driving position at the desired fastener driving location. Make sure nail point is centered in prepunched hole.



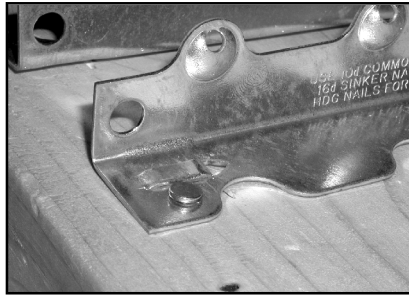
3. Press the tool down firmly against the work surface, fully depressing the nosepiece/safety bracket.

4. Squeeze the trigger once to drive a fastener.

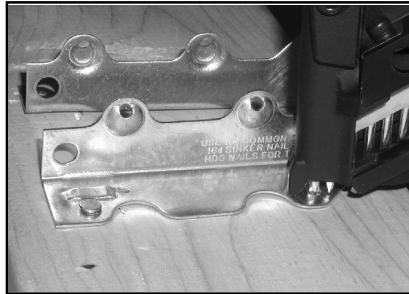


5. Allow the tool to rebound off the work surface, and release the trigger to reset the workpiece contact. Tool will not drive another fastener until trigger is released, and cannot be bump-fired.

6. Check fastener for flush drive, and if needed, make air pressure adjustments at the compressor: Increase air pressure to drive deeper or to drive into harder materials. Reduce air pressure to reduce drive or to drive into softer materials. For longest tool and part life, always use the lowest air pressure necessary to drive fasteners to desired depth.

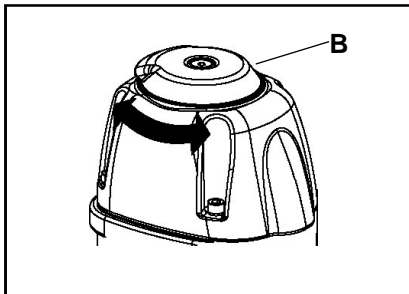


7. Position the tool for driving the next fastener, and repeat the above procedure. Always keep hands and other body parts away from areas being fastened.
8. Disconnect tool from air supply when nailing is completed.



## AIR DEFLECTOR ADJUSTMENT

1. If necessary, the air deflector (B) may be rotated to direct exhaust air discharge away from operator.
2. Grip air deflector, and rotate until discharge port is pointed in the desired direction.
3. Check deflector position periodically to make sure exhaust air discharge is directed in a safe direction.

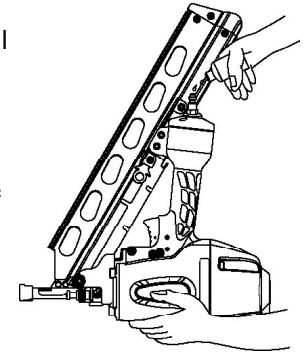


## MAINTENANCE

Your tool will last longer and perform better if periodic maintenance is performed. Please use the information below to keep your tool operating in top condition.

### Lubrication

Disconnect tool from the air supply and remove all fasteners. Apply 2 - 3 drops of air tool oil (provided) in the air inlet two - three times a day. If the tool will be used outside in the winter, use a winter grade air tool oil to help keep frost from forming inside the tool. Do not use other types of lubricants on this tool, as other lubricants may contain chemicals harmful to o-rings and other tool components. Drain compressor tanks and hoses daily.



### Cleaning

Disconnect tool from the air supply and remove all fasteners. Brush tool off using a parts cleaning brush or clean rag. Check area around trigger and workpiece contact, and clean as necessary.

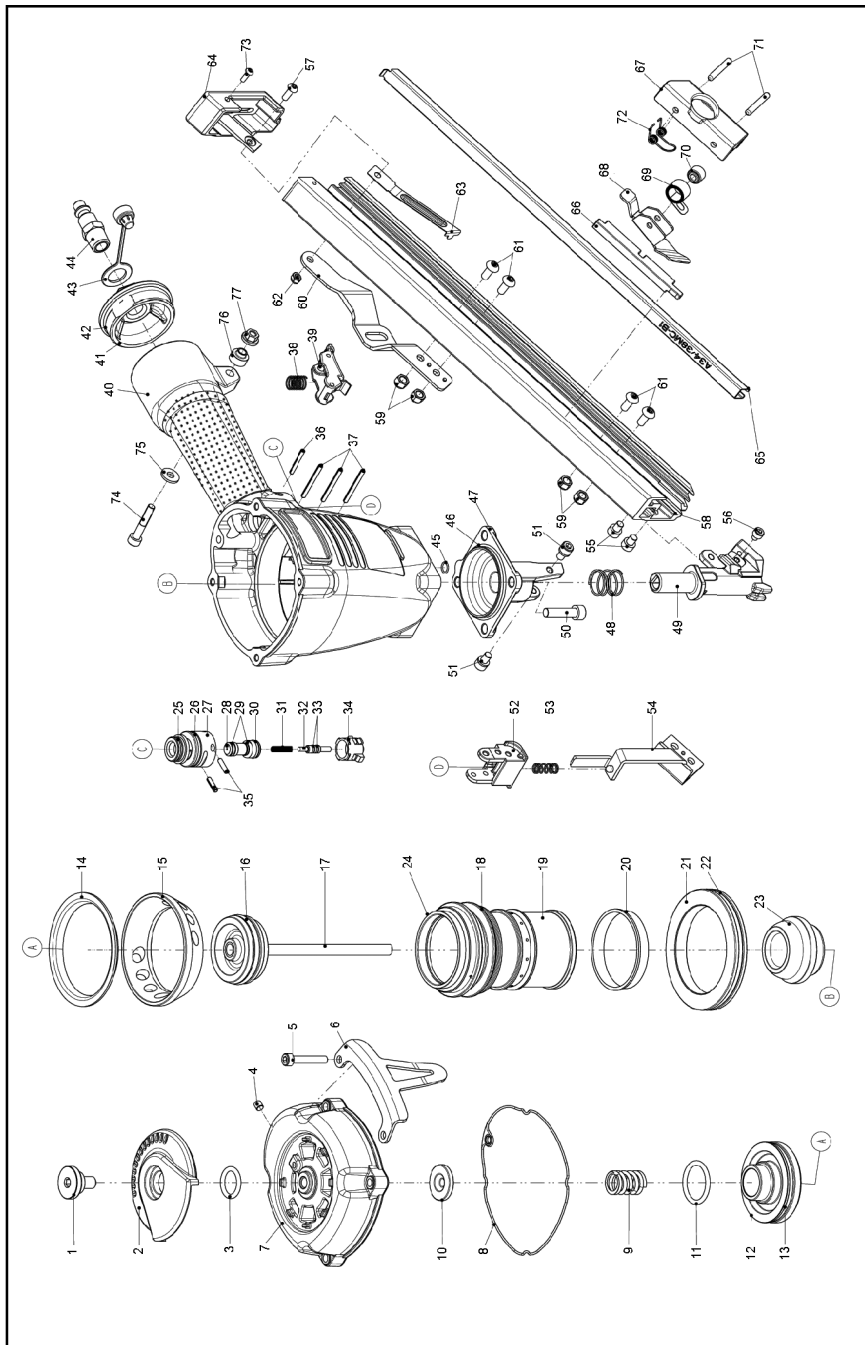
### Trigger Check

Check trigger operation daily to confirm proper sequential operation:

1. Press the workpiece contact against a safe work surface without depressing the trigger. **THE TOOL MUST NOT CYCLE.**
2. Hold the tool above a safe work surface and pull the trigger without depressing the workpiece contact. **THE TOOL MUST NOT CYCLE.**
3. Pull and hold the trigger, and then press the workpiece contact against a safe work surface. **THE TOOL MUST NOT CYCLE.**
4. With finger off trigger, press the workpiece contact against a safe work surface. Keep tool pressed against work surface, and pull trigger. **THE TOOL MUST CYCLE ONCE.**
5. The trigger must return to the normal position each time finger pressure is released.



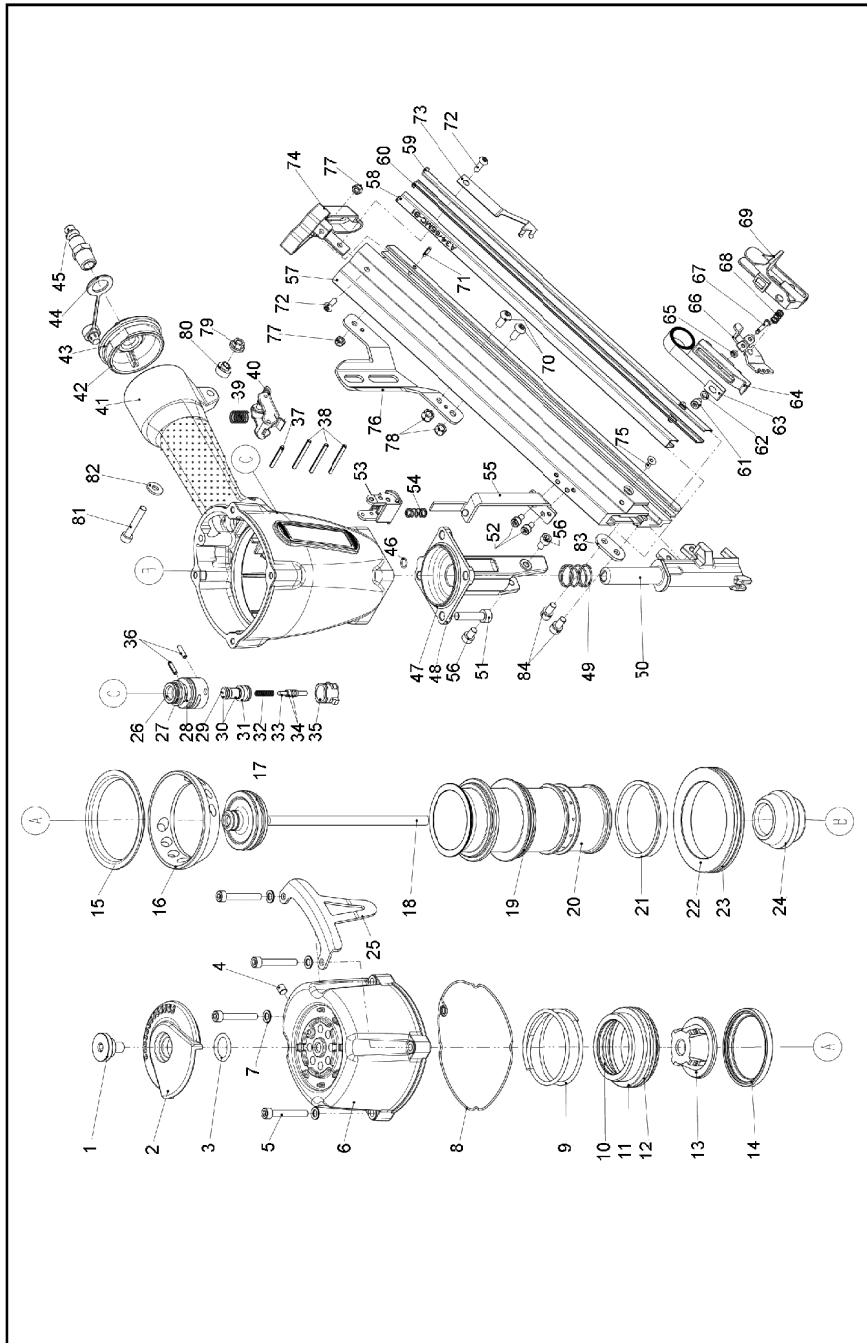
# GRSB150 PARTS SCHEMATIC



# GRSB150 PARTS LIST

ITEM	P/N	DESCRIPTION	ITEM	P/N	DESCRIPTION
1	GRBN438	Deflector Pad	40	GRBN400	Gun Body
2	GRBN439	Deflector	41	GRBN429	End Cap
3	GRBN440	O - Ring	42	GRBN430	O - Ring
4	GRBN417	Hex.Soc.Hd.Screw	43	GRBN434	Dust Cover
5	GRBN441	Hex.Soc.Hd.Bolt	44	GRBN405	Air Plug
6	GRBN442	Hanger	45	GRBN461	O - Ring
7	GRBN390	Cap	46	GRBN462	O - Ring
8	GRBN443	Gasket, Cap	47	GRBN463	Base
9	GRBN391	Compression Spring	48	GRBN464	Spring
10	GRBN392	Seal	49	GRBN401	Nose Piece
11	GRBN393	O - Ring	50	GRBN465	Bolt Assy
12	GRBN394	Hd.Valve Piston	51	GRBN466	Bolt Assy
13	GRBN395	O - Ring	52	GRBN467	Safety Guide
14	GRBN450	Press Ring	53	GRBN468	Safety Spring
15	GRBN480	Cylinder Press Ring	54	GRBN469	Safety
16	GRBN396	O-Ring	55	GRBN435	Hex.Soc.Hd.Bolt
17	GRBN397	Driver Unit	56	GRBN31	Hex.Soc.Hd.Bolt
18	GRBN452	O - Ring	57	GRBN470	Half Round Hd.Hex.Bolt
19	GRBN398	Cylinder	58	GRBN471	Magazine A
20	GRBN453	Cylinder Ring	59	GRBN388	Lock Nut
21	GRBN454	Cylinder Spacer	60	GRBN472	Positioning Bracket
22	GRBN455	O - Ring	61	GRBN406	Half Rnd. Hd.Hex.Bolt
23	GRBN456	Bumper	62	GRBN3	Lock Nut
24	GRBN399	Collar	63	GRBN413	Stop Nail Plate
25	GRBN418	O - Ring	64	GRBN410	Magazine Cap
26	GRBN420	O - Ring	65	GRBN473	Steel Channel
27	GRBN419	Plunger Cap	66	GRBN474	Safety Stopper
28	GRBN422	Valve Plunger	67	GRBN409	Pusher Latch
29	GRBN421	O - Ring	68	GRBN407	Pusher
30	GRBN423	O - Ring	69	GRBN475	Spring
31	GRBN424	Spring	70	GRBN39	Rolling Element
32	GRBN457	Plunger	71	GRBN476	Roll Pin
33	GRBN425	O - Ring	72	GRBN408	Spring
34	GRBN426	Trigger Valve Head	73	GRBN502	Half Round Hd.Hex.Bolt
35	GRBN427	Spring Pin	74	GRBN402	Hex.Soc.Hd.Bolt
36	GRBN458	Spring Pin	75	GRBN431	Flat Washer
37	GRBN428	Spring PiN	76	GRBN403	Bushing
38	GRBN459	Spring	77	GRBN432	Bolt Cap
39	GRBN460	Trigger Unit			
A	GRDAK1800	Driver Assembly Kit			
B	GRRBK1800	Rebuild Kit			
C	CASESB150	Tool Case			
D	MANSB150	Operators Manual			

# GRSB250 PARTS SCHEMATIC



# GRSB250 PARTS LIST

ITEM	P/N	DESCRIPTION	ITEM	P/N	DESCRIPTION
1	GRBN438	Deflector Pad	43	GRBN430	O - Ring
2	GRBN439	Deflector	44	GRBN434	Dust Cover
3	GRBN440	O - Ring	45	GRBN405	Air Plug
4	GRBN478	Hex.Soc.Hd.Screw	46	GRBN461	O - Ring
5	GRBN436	Hex.Soc.Hd.Bolt	47	GRBN462	O - Ring
6	GRBN479	Cap	48	GRBN483	Base
7	GRBN412	Flat Washer	49	GRBN464	Spring
8	GRBN443	Gasket, Cap	50	GRBN484	Nose Piece
9	GRBN444	Compression Spring	51	GRBN465	Bolt Assy
10	GRBN445	O - Ring	52	GRBN485	Bolt Assy
11	GRBN446	Hd.Valve Piston	53	GRBN467	Safety Guide
12	GRBN447	O - Ring	54	GRBN468	Safety Spring
13	GRBN448	Seal	55	GRBN486	Safety
14	GRBN449	Collar	56	GRBN411	Hex.Soc.Hd.Bolt
15	GRBN450	Press Ring	57	GRBN487	Magazine A
16	GRBN480	Cylinder Press Ring	58	GRBN488	Steel Channel
17	GRBN451	O-Ring	59	GRBN489	Steel Channel
18	GRBN481	Driver Unit	60	GRBN490	Steel Channel
19	GRBN452	O - Ring	61	GRBN491	Hex.Soc.Hd.Bolt
20	GRBN482	Cylinder	62	GRBN492	Spring Washer
21	GRBN453	Cylinder Ring	63	GRBN493	Spring
22	GRBN454	Cylinder Spacer	64	GRBN494	Safety Stopper
23	GRBN455	O - Ring	65	GRBN433	Urethane Retainer
24	GRBN456	Bumper	66	GRBN495	Pusher
25	GRBN442	Hanger	67	GRBN404	Fixed Pin
26	GRBN418	O - Ring	68	GRBN416	Spring
27	GRBN420	O - Ring	69	GRBN415	Pusher Latch
28	GRBN419	Plunger Cap	70	GRBN406	Half Round Hd.Hex.Bolt
29	GRBN422	Valve Plunger	71	GRBN414	Spring Pin
30	GRBN421	O - Ring	72	GRBN470	Half Round Hd.Hex.Bolt
31	GRBN423	O - Ring	73	GRBN496	Stop Nail Plate
32	GRBN424	Spring	74	GRBN497	Magazine Cap
33	GRBN457	Plunger	75	GRBN498	Counter Sunk Screw
34	GRBN425	O - Ring	76	GRBN499	Positioning Bracket
35	GRBN426	Trigger Valve Head	77	GRBN3	Lock Nut
36	GRBN427	Spring Pin	78	GRBN388	Lock Nut
37	GRBN458	Spring Pin	79	GRBN432	Bolt Cap
38	GRBN428	Spring Pin	80	GRBN477	Bushing
39	GRBN459	Spring	81	GRBN437	Hex.Soc.Hd.Bolt
40	GRBN460	Trigger Unit	82	GRBN431	Flat Washer
41	GRBN389	Gun Body	83	GRBN500	Gasket
42	GRBN429	End Cap	84	GRBN501	Bolt Assy

- A GRDAK1900 Driver Assembly Kit
- B GRRBK1900 Rebuild Kit
- C CASESB250 Tool Case
- D MANSB250 Operators Manual

## TOOL TROUBLESHOOTING

Your pneumatic fastening tool has been designed for long life and trouble-free operation. However, if operating problems arise, please use the troubleshooting information below to determine how to remedy the problem.

### DANGER

Always disconnect tool from air supply before performing any service on tool. Correcting a problem while the tool is pressurized may result in injury from fastener discharge or tool operation.

#### FASTENER DRIVING PROBLEMS

PROBLEM	CORRECTIVE ACTION
Fasteners do not drive completely.	AT COMPRESSOR: Increase air pressure. Do not exceed 120 psi/8.3 bar
Fasteners do not drive completely after air pressure is increased.	Driver blade worn or broken. See dealer for replacement.
Fasteners drive too deeply.	AT COMPRESSOR: Reduce air pressure. (Do not reduce below 100 psi/6.9 bar.)
Nail does not advance into driving position in nose.	Check magazine for jammed fastener. Clear jam and reload magazine. Check nail strip for smooth feeding in magazine.
Tool won't operate - nail jammed in tool nose, preventing tool from operating.	Remove jammed fastener from tool nose. Check magazine for incorrect, bent, or loose fasteners, and discard. Reload using Grip-Rite™ nails.
Tool leaks air.	Check for source of leak, and tighten fittings and screws as required. Discontinue using tool if air leaks at trigger area or from cap exhaust. Contact your dealer.

## TOOL CHECKS

Keep your nailer in top working condition by checking it daily. See your Grip-Rite® dealer for service if part or operating problems are found. Never use a malfunctioning tool - it could result in serious injury.

### Workpiece Contact & Trigger

Check workpiece contact for proper operation before each use. Workpiece contact must move freely and return to extended position when lifted from workpiece. Trigger must operate freely.

### Daily Inspection

- Check for broken, damaged, or excessively worn parts, and repair or replace as needed.
- Check for air leaks at trigger, cap, and nose. Disconnect tool from air supply immediately if leaks are present, and see dealer for service.
- Make sure all screws are tightened securely.

**PNEUMATIC TOOL/COMPRESSOR WARRANTY**

Pneumatic nailers, staplers & compressors marketed under the **GRIP RITE™** brand are warranted to be free from defects in workmanship & materials (except rubber o-rings, bumpers, seals, driver blades, dipsticks, & air filters) for a period of one year from the date of original purchase.

This warranty will not apply when:

- The original receipt (or copy of the original receipt), showing the original purchase date, is not provided with tools/compressors sent in for warranty repair
- The tool/compressor has been misused, abused or improperly maintained
- Alterations have been made to the original tool/compressor
- Repairs have been attempted/made to the original tool/compressor by any entity other than a proprietary **PRIMESOURCE®** service/warranty center or authorized service/warranty center
- Non- **GRIP-RITE TOOLS™ / GRIP-RITE COMPRESSORS™** parts have been used
- The tool has suffered any physical damage due to the use of non-**GRIP-RITE®** approved fasteners\*
- Repairs are required due to normal wear & tear
- The tool/compressor has been inadequately packaged leading to damage in-transit to the service/warranty center.

\*Approved fasteners include the following brands **GRIP-RITE FAS'NERS™, FAS'NERS UNLIMITED™**

IN NO EVENT SHALL **PRIMESOURCE®** BE LIABLE FOR ANY INDIRECT, ACCIDENTAL OR CONSEQUENTIAL DAMAGE FROM THE SALE OR USE OF THESE PRODUCTS. THIS DISCLAIMER APPLIES BOTH DURING & AFTER THE TERM OF WARRANTY.

THIS IS OUR WARRANTY & IS EXPRESSLY IN LIEU OF ALL OTHER WARRANTIES, EXPRESS OR IMPLIED, INCLUDING THE WARRANTIES OF MERCHANTABILITY AND FITNESS FOR A PARTICULAR PURPOSE (EXCEPT AS MAY BE OTHERWISE PROVIDED BY LAW).

THIS LIMITED WARRANTY GIVES YOU SPECIFIC LEGAL RIGHTS, AND YOU MAY ALSO HAVE OTHER RIGHTS, WHICH VARY, FROM STATE TO STATE.

**PNEUMATIC TOOL/COMPRESSOR SERVICE INFORMATION**

*Should any mechanical problems develop during the life of your equipment the following options are available for service and parts:*

- Call (800)676-7777 where you will be routed to the nearest **GRIP-RITE®** distribution center and directed to the nearest authorized service/warranty center.
- Logging on to our website at **www.grip-rite.com** where you will find a list of our authorized service centers.
- Contact the **GRIP-RITE®** Factory Warranty Center directly at Phone: (800)207-9259 or Fax: (800)207-9614
- In Canada, Call **(866) 512-1418**

**STEPS TO TAKE WHEN SHIPPING TOOLS**

- Adequately package the product to avoid damage in-transit (in the case of pneumatic tools, the original blow mold plastic carrying case is considered adequate packaging).
- Provide the original/copy of receipt showing the original purchase date.
- Insure your shipment with the shipping company.

**PRIMESOURCE®** will not be responsible for any tool/compressor that is lost or damaged by the shipper on route to the **PRIMESOURCE®** service/warranty center.

**USE GENUINE GRIP-RITE®  
FASTENERS FOR BEST  
PERFORMANCE**



Distributed by/Distribuido por/Imported by/Importé par:

**PRIME SOURCE**®  
*BUILDING PRODUCTS, INC.*  
*and*  
*BUILDING PRODUCTS CANADA CORPORATION*  
*are Itochu Companies*

Carrollton, Texas 75006 USA  
[www.grip-rite.com](http://www.grip-rite.com)