



# **MF97V**

## **User Manual**

## About This Manual

Thank you for choosing this ZTE device. In order to keep your device in its best condition, please read this manual and keep it for future reference.

### Copyright

**Copyright © 2015 ZTE CORPORATION**

**All rights reserved.**

No part of this publication may be quoted, reproduced, translated or used in any form or by any means, electronic or mechanical, including photocopying and microfilm, without the prior written permission of ZTE Corporation.

### Notice

ZTE Corporation reserves the right to make modifications on print errors or update specifications in this guide without prior notice. This manual has been designed with the utmost care to ensure the accuracy of its content. However, all statements, information and recommendations contained therein do not constitute a warranty of any kind, either expressed or implied. Please refer to [For Your Safety](#) to be sure to use your device properly and safely.

We offer self-service for our smart terminal device users. Please visit the ZTE official website (at [www.zteusa.com](http://www.zteusa.com)) for more information on self-service and supported product models. Information on the website takes precedence.

## Disclaimer

ZTE Corporation expressly disclaims any liability for faults and damages caused by unauthorized modifications of the software.

Images and screenshots used in this manual may differ from the actual product. Content in this manual may differ from the actual product or software.

## Trademarks

ZTE and the ZTE logos are trademarks of ZTE Corporation.

Google and Android are trademarks of Google, Inc.

The *Bluetooth*® trademark and logos are owned by the Bluetooth SIG, Inc. and any use of such trademarks by ZTE Corporation is under license.



Qualcomm® Snapdragon™ processors are products of Qualcomm Technologies, Inc.

Qualcomm and Snapdragon are trademarks of Qualcomm Incorporated, registered in the United States and other countries. Used with permission.



TEXAS INSTRUMENTS DLP is the trademark of Texas Instruments.



microSDHC Logo is a trademark of SD-3C, LLC.

Manufactured under license from Dolby Laboratories. Dolby, Dolby Audio, and the double-D symbol are trademarks of Dolby Laboratories.

Other trademarks and trade names are the property of their respective owners.

**Version No.:** R1.0

**Edition Time:** March 27, 2015

# Contents

<b>Getting Started</b> .....	<b>11</b>
Getting to Know Your Spro2 .....	11
Replacing the micro-SIM Card.....	14
Installing the microSDHC™ Card (Not Included).....	17
Charging the Battery .....	18
Powering On/Off Your Spro2 .....	20
Restarting Your Spro2 .....	20
Waking Up Your Spro2 .....	20
Setting Up for the First Time.....	21
Turning On/Off the Projector.....	21
Adjusting the Projection.....	23
Using the Touch Screen .....	24
Getting to Know the Home Screen .....	27
<b>Personalizing</b> .....	<b>31</b>
Changing the System Language .....	31
Setting the Date and Time.....	31
Changing Notification Sound .....	32
Turning On/Off Other System Sounds .....	32
Adjusting Volume .....	32
Switching to Silent Mode .....	32
Applying New Wallpapers.....	33
Changing Screen Brightness.....	33
Protecting Your Spro2 With Screen Locks.....	33

Protecting Your Spro2 With Encryption.....	34
<b>Knowing the Basics.....</b>	<b>37</b>
Monitoring the Device Status.....	37
Managing Notifications.....	38
Entering Text .....	41
Editing Text.....	43
Opening and Switching Apps .....	44
<b>Projection .....</b>	<b>45</b>
Projecting a File Saved in Your Spro2 .....	45
Projecting an HDMI Source.....	46
Projecting a File Saved in Your USB Device.....	48
Projecting a Source on Your Phone via Miracast (Wi-Fi Display) .....	49
Using Miracast and Mobile Hotspot Simultaneously .....	50
<b>Remote Control .....</b>	<b>52</b>
Downloading and Installing the Remote Control App .....	52
Connecting to Spro2 and Using the Remote Control App..	52
<b>Connecting to Networks and Devices.....</b>	<b>55</b>
Connecting to Mobile Networks.....	55
Connecting to Wi-Fi® .....	56
Using Wi-Fi Direct® .....	61
Connecting to Bluetooth® Devices.....	62
Connecting to Your Computer via USB.....	66
Connecting to a USB Device.....	69

Connecting to a Webcam (Not Included) .....	70
Sharing Your Mobile Data Connection .....	71
Connecting to Virtual Private Networks .....	75
<b>Accounts .....</b>	<b>77</b>
Adding or Removing Accounts.....	77
Configuring Account Sync .....	78
<b>Gmail™ .....</b>	<b>80</b>
Opening Your Gmail Inbox.....	80
Switching Accounts .....	80
Writing and Sending a Message .....	81
Replying to or Forwarding a Message .....	81
Working With Received Attachments .....	82
Working With Labels .....	82
Changing Gmail Settings.....	83
<b>Dolphin Browser .....</b>	<b>84</b>
Opening the Browser .....	84
Using Multiple Browser Tabs .....	85
Downloading Files.....	86
Changing Browser Settings .....	86
<b>Maps .....</b>	<b>87</b>
Activating Location Services.....	87
Getting Your Location.....	87
Searching for a Location .....	87
Getting Directions to Your Destination .....	88

Searching for Local Places .....	89
<b>Google Search.....</b>	<b>90</b>
Searching With Text.....	90
Searching by Speaking .....	90
Changing Search Settings .....	91
<b>Gallery.....</b>	<b>92</b>
Opening Gallery.....	92
Working With Albums.....	92
Working With Pictures.....	93
Playing Videos.....	94
<b>Play Music .....</b>	<b>95</b>
Copying Music Files to Your Spro2.....	95
Playing Your Music .....	96
Managing Playlists.....	98
<b>Video Player .....</b>	<b>100</b>
Playing and Controlling Videos .....	100
Managing Video Files .....	101
<b>Sound Recorder.....</b>	<b>102</b>
<b>More Apps.....</b>	<b>103</b>
Chrome™ .....	103
Dolby.....	103
Downloads.....	103
Drive.....	104

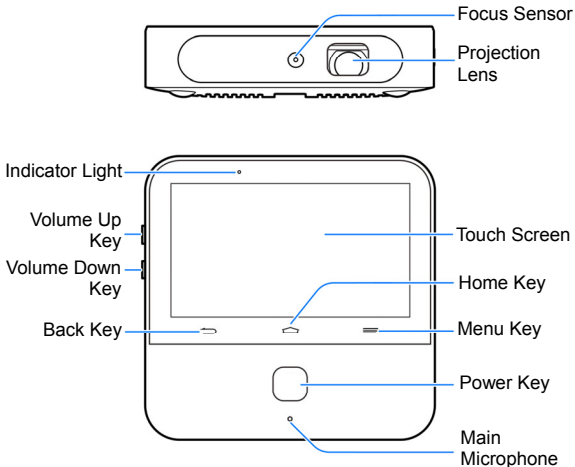


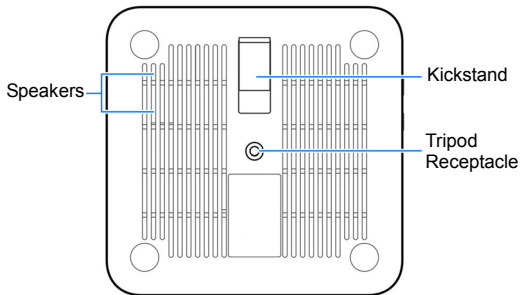
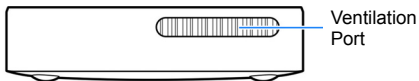
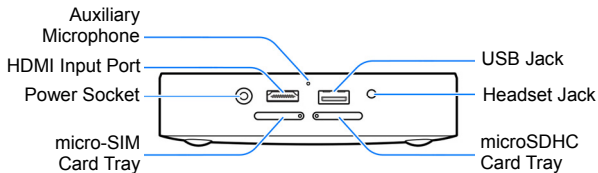
File Manager.....	104
Google+ .....	105
Hangouts .....	105
Power Media Player .....	105
WPS Office .....	106
YouTube .....	106
<b>Google Play™ Store .....</b>	<b>107</b>
Browsing and Searching for Apps.....	107
Downloading and Installing Apps .....	107
Creating a Google Wallet™ Account.....	108
Managing Your Downloads.....	109
<b>Settings .....</b>	<b>110</b>
Network .....	110
Device .....	112
Local.....	115
Projector Settings.....	120
<b>Troubleshooting.....</b>	<b>122</b>
<b>For Your Safety .....</b>	<b>126</b>
General Safety .....	126
Radio Frequency (RF) Energy.....	127
FCC Compliance.....	128
CTIA Requirements.....	130
Distraction.....	131
Product Handling .....	131

Electrical Safety.....	135
Radio Frequency Interference.....	136
Explosive Environments.....	138

# Getting Started

## Getting to Know Your Spro2





## Projection Lens

Project the display on a surface.



### **WARNING!**

Do not look directly into the projection lens or point the lens toward people or animals' eyes when the projector is on as this may cause injury to the eyes.

## Focus Sensor

Analyze the clarity of the projected image in order for the projector to adjust its focus automatically.

## Back Key

Touch to go to the previous screen.

## Home Key

- Touch to return to the **HOME** tab of the home screen.
- Touch and hold to open the Google app or the web browser.

## Menu Key

- Touch to get options for the current screen.
- Touch and hold to see recently used apps.

## Volume Key (Volume Up/Down)

Press or hold to turn the volume up or down.

## Power Key

- Press and hold to enable or disable airplane mode, power on/off or restart your Spro2.
- Press to turn off or on the screen display.
- Press twice quickly when the projector is turned on to adjust its focus automatically.

## Main Microphone / Auxiliary Microphone

Transmit your voice. The auxiliary microphone is useful for canceling ambient noise.

## Ventilation Port

Exhaust hot air when the projector is on.



### **WARNING!**

Do not place anything near the ventilation port as this may cause internal heat buildup. Do not place your hand near the ventilation port as this may cause injury.

## Tripod Receptacle

Connect a tripod (not included in the packaging).

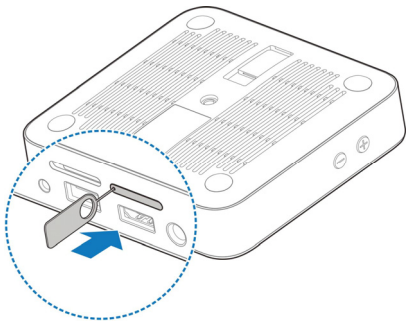
## Replacing the micro-SIM Card

A micro-SIM card is preinstalled in your Spro2, and you can replace a new micro-SIM card if needed. The micro-SIM card can be installed or removed while Spro2 is turned on.

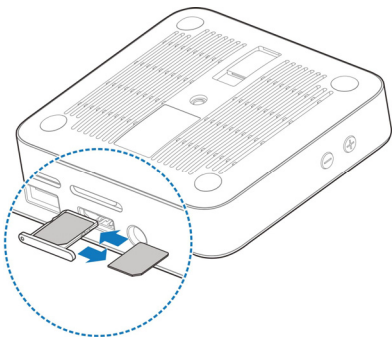
**⚠ WARNING!**

To avoid damage to Spro2, do not use any other kind of SIM card, or any non-standard micro-SIM card cut from a SIM card. You can get a standard micro-SIM card from your mobile service provider.

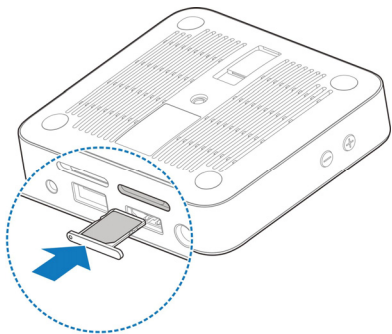
1. Turn your Spro2 upside down. Insert the tip of the tray eject tool into the hole on the micro-SIM card tray and take the tray out of the slot.



2. Remove the micro-SIM card on the tray and replace a new one.



3. Carefully install the tray back.

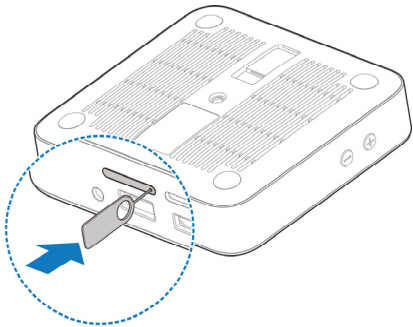




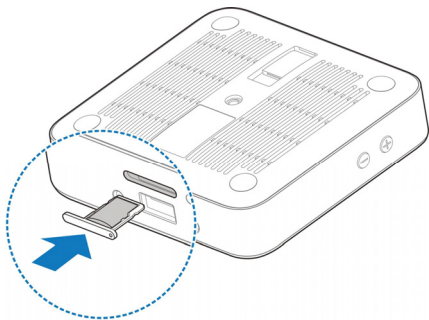
## Installing the microSDHC™ Card (Not Included)

A microSDHC card can be installed or removed while Spro2 is turned on. You need to unmount the microSDHC card before removing it. See [Remove the microSDHC Card From Your Spro2](#).

1. Turn your Spro2 upside down. Insert the tip of the tray eject tool into the hole on the microSDHC card tray and take the tray out of the slot.



2. Place the microSDHC card on the tray as shown and carefully install the tray back.



#### **NOTE:**

Some applications may require a microSDHC card to work properly if it stores certain data on it. Therefore, it is recommended that you keep a microSDHC card installed and not remove or replace it unnecessarily.

## Charging the Battery

You should fully charge the battery before using Spro2. Out of the box the battery should have enough power for Spro2 to turn on.



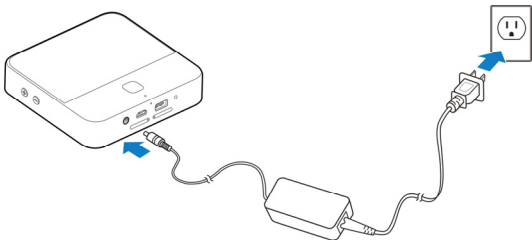
#### **WARNING!**

Use only ZTE-approved chargers and cables. The use of unauthorized accessories may cause damage.

**!** **CAUTION:**

Do not try to remove or change the built-in rechargeable battery in your Spro2 by yourself. By doing so will violate the warranty policy from ZTE. Contact customer service for support.

1. Plug the AC adapter into the power socket on your Spro2 and then put the plug into an electrical outlet.



2. Disconnect the adapter when the battery is fully charged.

**✎** **NOTE:**

If the battery is extremely low, you may not be able to power on Spro2 even when it is charging. Allow Spro2 to charge longer and try again. Contact the customer service if you still cannot power on Spro2 after prolonged charging.

## Powering On/Off Your Spro2

Ensure that the battery is charged.

- Press and hold the **Power Key** to turn on your Spro2.
- To power it off, press and hold the **Power Key** to open the options menu. Touch **Power off** and then touch **OK**.

## Restarting Your Spro2

If the screen freezes or takes too long to respond, try pressing and holding the **Power Key** for about 10 seconds to restart Spro2.

## Waking Up Your Spro2

Your Spro2 automatically goes into sleep mode when it is not in use for certain time. The touch screen is turned off to save power and the keys are locked to prevent accidental operations.

You can wake up your Spro2 by following the instruction as below.


1. Press the **Power Key** to turn the touch screen on.
2. Touch and hold any area of the screen to unlock Spro2.

### **NOTE:**

If you have set an unlock pattern, a PIN or a password for your Spro2 (see [Protecting Your Spro2 With Screen Locks](#)), you'll need to draw the pattern, or enter the PIN/password to unlock your Spro2.

## Setting Up for the First Time

When you first power on your Spro2 after you purchase it or reset it to factory settings (see [Backup and Reset](#)), you need to do some settings before using it.

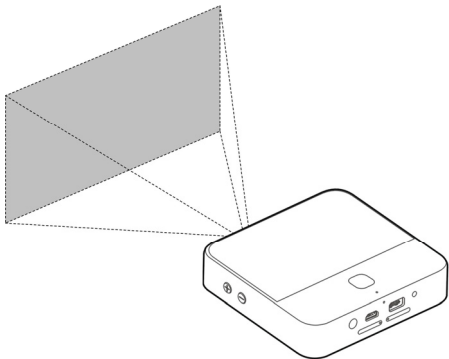
Flick the language field to select the language and touch . Then follow the prompts to set up Wi-Fi, Google account, Google location and other options.

## Turning On/Off the Projector

You can use the projector embedded in your Spro2 to project the display onto large surfaces.

### **WARNING!**

Do not look directly into the projection lens or point the lens toward people or animals' eyes when the projector is on as this may cause injury to the eyes.



There are several ways that you can turn on or off the projector.

- When your Spro2's screen is turned on, swipe up or down using **THREE** fingers on the screen to turn on or off the projector.
- Drag the status bar down from the top of the screen and touch **Projector** below **Control Switch**.
- From the **HOME** tab of the home screen, touch the round button on the **Projector** widget.
- From the **SETTINGS** tab of the home screen, touch **Projector > Control** and then touch the switch next to **Projector** in the **Projector settings** screen.

 **NOTE:**

For best results, project onto a non-reflective white flat display surface at a 90° angle to Spro2's touch screen. The projection distance of Spro2 is about 3 to 12 feet.

## Adjusting the Projection

When the projector is on, you can adjust projection focus, keystone distortion, projection brightness and projection color.

### To adjust projection focus:

1. Touch the **Home Key > SETTINGS** tab > **Projector > Image**.
2. In the Focus section, turn on automatic focus or touch “+” and “-” to make manual adjustment.

 **NOTE:**

You can also press the **Power Key** twice quickly to adjust projection focus automatically.

### To adjust keystone distortion:

You can adjust keystone distortion to correct image during a tilted projection.

1. Touch the **Home Key > SETTINGS** tab > **Projector > Image**.
2. In the Keystone section, turn on automatic adjustment or touch “+” and “-” to make manual adjustment.

### To adjust projection brightness:

1. Touch the **Home Key > SETTINGS** tab > **Projector > Image**.
2. In the Brightness section, select the brightness level.

### To adjust projection color:

1. Touch the **Home Key > SETTINGS** tab > **Projector > Image**.
2. In the Color correction section, select a color effect you like.

## Using the Touch Screen

Your Spro2's touch screen enables you to control actions through a variety of touch gestures.

- Touch

When you want to type using the onscreen keyboard, or select items on the screen such as onscreen buttons, applications and settings icons, simply touch them with your finger.





- Touch and Hold

To open available options for an item (e.g. a link in a web page), simply touch and hold the item.



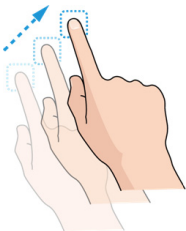
- Swipe or Slide

To swipe or slide means to quickly drag your finger vertically or horizontally across the screen.



- Drag

To drag, press and hold your finger with some pressure before you start to move your finger. While dragging, do not release your finger until you have reached the target position.



- Pinch

In some apps (such as Maps, web browser, and Gallery), you can zoom in and out by placing two fingers on the screen at once and pinching them together (to zoom out) or spreading them apart (to zoom in).



- Rotate the screen

For some screens, you can automatically change the screen orientation from landscape to portrait by turning Spro2 sideways.



## NOTE:

The **Auto-rotate screen** check box needs to be selected for the screen orientation to automatically change. Touch the **Home Key > SETTINGS tab > System > Device > Display > Auto-rotate screen**.

You can also access the screen rotation control by sliding down the status bar and touching **Auto Rotate**.

## Getting to Know the Home Screen

The home screen is the starting point for your Spro2's applications, functions, and menus. You can customize your home screen by adding tabs, folders, or application shortcuts you need, or remove them as you like.



## Navigate the Home Screen

Your home screen comes with a series of tabs.


- Touch a tab to access the items in it.
- Touch the **APPS** tab to find all your applications.
- Touch other tabs to find application shortcuts, folders and widgets.
- With widgets, you can manage some important functions of your Spro2 right from the home screen.

## Personalize the Home Screen

**To add a tab:**

Touch  to add a new tab in the home screen.

**To edit a tab:**

Touch and hold the tab and then touch  to delete the tab and all items in it, or touch the tab name to enter a new tab name.

 **NOTE:**


Some tabs, such as the **APPS** tab and the **HOME** tab, are pre-configured and cannot be edited.

**To add an application shortcut:**


1. Touch and hold an application icon in the **APPS** tab or any shortcut in any other tab.
2. Drag the item to the name of the tab that you want to put the item in. The screen will display the content in that tab.

3. Drag the item to an empty spot in the tab and release your finger.

### **To remove an application shortcut:**

1. Touch and hold an application icon in any tab other than the **APPS** tab.
2. Drag the icon to  (**Remove**) at the bottom and release your finger.

### **To organize shortcuts with folders:**

1. Touch and hold an application icon in any tab other than the **APPS** tab.
2. Drag the icon to  (**Folder**) at the bottom and release your finger. A new folder is created and the icon is moved into the folder.
3. To add more shortcuts into the folder, touch and hold them and drag them to the folder and release them.

### **NOTE:**


To remove a shortcut from a folder, touch the folder to display its content, and then touch and hold the shortcut and release it after dragging it out of the folder.

### **To rename a folder:**

1. Touch a folder to open it.
2. Touch twice the folder name displayed above the icons in the folder.

3. Enter a new name and touch **Done** or touch any area outside the folder to save the name.

### **To uninstall an application:**

1. Touch and hold an application icon in the **APPS** tab of the home screen.
2. Touch  on the application you want to uninstall.
3. Touch **OK**.



#### **NOTE:**

Not all applications can be uninstalled.

# Personalizing

## Changing the System Language

1. Touch the **Home Key > SETTINGS tab > System > Local > Language & input > Language**.
2. Select the language you need.

## Setting the Date and Time

1. Touch the **Home Key > SETTINGS tab > System > Local > Date & time**.
2. Set the date, time, time zone, and date/time format.
  - ▶ To adjust the date and time automatically, check **Automatic date & time**.
  - ▶ To adjust the date and time manually, uncheck **Automatic date & time** and touch **Set date / Set time** to change the date and time.
  - ▶ To adjust the time zone automatically, check **Automatic time zone**.
  - ▶ To adjust the time zone manually, uncheck **Automatic time zone** and touch **Select time zone** to set the correct time zone.
  - ▶ To adjust the format of time and date, touch **Use 24-hour format** or **Choose date format**.

## Changing Notification Sound

You can customize the default notification sound.

1. Touch the **Home Key > SETTINGS tab > System > Device > Sound**.
2. Touch **Default notification**.
3. Select the sound you want to use and touch **OK**.

## Turning On/Off Other System Sounds

1. Touch the **Home Key > SETTINGS tab > System > Device > Sound**.
2. Check or uncheck **Touch sounds**, **Screen lock sounds**, or **Vibrate on touch**.


## Adjusting Volume

1. Touch the **Home Key > SETTINGS tab > System > Device > Sound > Volumes**.
2. Drag the sliders to adjust the volume for each type of audio.
3. Touch **OK** to save.

## Switching to Silent Mode

You can set your Spro2 to silent mode by using one of the following methods.



- Touch the **Home Key > SETTINGS** tab > **System > Device > Sound > Sound mode** and select **Mute**.
- Keep pressing the **Volume Down Key** when no media application is active. When the  icon appears on the status bar, Spro2 is in silent mode.

## Applying New Wallpapers

You can set the wallpaper for the lock screen.

1. Touch the **Home Key > SETTINGS** tab > **System > Device > Display > Wallpaper**.
2. Select a wallpaper source from **Gallery** or **Wallpapers** and choose the image you want to use as the wallpaper. Some cropping may be needed for **Gallery** images.

## Changing Screen Brightness

1. Touch the **Home Key > SETTINGS** tab > **System > Device > Display > Brightness**.
2. Drag the slider to adjust the screen brightness.

## Protecting Your Spro2 With Screen Locks

You can protect your Spro2 by creating a screen lock. When it is enabled, you need to touch and hold on the screen, draw a pattern or enter a numeric PIN or password to unlock Spro2's screen and keys.

1. Touch the **Home Key > SETTINGS** tab > **System > Local > Security > Screen lock**.
2. Touch **Long Press, Pattern, PIN** or **Password**.
  - ▶ Touch **Long Press** to enable screen lock and allow unlock with a ‘touch and hold’ gesture. You can unlock the screen by touching and holding any blank area on the screen.
  - ▶ Touch **Pattern** to create a pattern you must draw to unlock the screen.
  - ▶ Touch **PIN** or **Password** to set a numeric PIN or a password that you must enter to unlock your screen.

 **CAUTION:**

Please remember the pattern, PIN or password you set. If you forget it, you need to consult the customer service to upgrade your Spro2 software and all data in your Spro2’s internal storage will be lost.

## Protecting Your Spro2 With Encryption

You can encrypt all the data on your Spro2: Google accounts, application data, music and other media, downloaded information, and so on. If you do, you must enter a numeric PIN or a password each time you power on your Spro2.

 **WARNING!**

Encryption is irreversible. The only way to revert to an unencrypted Spro2 is to perform a factory data reset, which erases all your data.

Encryption provides additional protection in case your Spro2 is stolen, and may be required or recommended in some organizations. Consult your system administrator before turning it on. In many cases the PIN or password you set for encryption is controlled by the system administrator.

Before turning on encryption, prepare as follows:

- Set a lock screen PIN or password.
- Charge the battery.
- Keep Spro2 connected to the charger.
- Schedule an hour or more for the encryption process: you must not interrupt it or you will lose some or all of your data.

When you're ready to turn on encryption:

1. Touch the **Home Key > SETTINGS** tab > **System > Local > Security > Encrypt device**.
2. Read the information about encryption carefully.

The **Encrypt device** button is dimmed if your battery is not charged or the charger is not plugged in your Spro2.

If you change your mind about encrypting your Spro2, touch the **Back Key**.

 **WARNING!**

If you interrupt the encryption process, you will lose data.

3. Touch **Encrypt device**.
4. Enter your lock screen PIN or password and touch **Next**.
5. Touch **Encrypt device** again.
















The encryption process starts. Encryption can take an hour or more, during which time your Spro2 may restart several times. When encryption is completed, you're prompted to enter your PIN or password.

Subsequently, you must enter your PIN or password each time you power on your Spro2 in order to decrypt it.

# Knowing the Basics

## Monitoring the Device Status









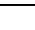


The status bar at the top of the home screen provides the status icons on the right side. Below are some of the icons you may see.

	4G LTE connected		No micro-SIM card inserted
	Mobile data in use		No signal
	Battery low		Signal strength
	Battery partially drained		Airplane mode
	Battery charging		Bluetooth on
	Battery full		Connected to a Wi-Fi <sup>®</sup> network
	Silent mode		Wi-Fi in use
	Wired headset connected		

# Managing Notifications

## Notification Icons

The status bar at the top of the home screen provides notification icons on the left. Below are some of the icons you may see.

	New Gmail™ message		New Wi-Fi network detected
	Music playing		USB tethering on
	Unmount external USB device		Mobile hotspot on
	External USB device connected		Downloading data
	microSDHC card safely unmounted		Sending data
	USB connected		


## Open/Close the Notification Panel

Notifications report the arrival of new Gmail message, as well as ongoing events, such as when you are playing music. You can open the notification panel to view the details of notifications.

- To open the notification panel, swipe your finger down from the top of the screen.
- To close the notification panel, swipe your finger up from the bottom of the screen or touch the **Back Key**.

## Respond to or Remove a Notification

In the notification panel, you can respond to a notification or remove the notifications. The notification panel also supports expandable notifications that let you perform additional actions right from the notification itself.

- To respond to a notification, just touch it.
- Slide down with one finger to expand certain notifications. You can also swipe two fingers vertically or pinch-zoom to expand or collapse certain notifications.
- To remove a notification, swipe it left or right.
- To remove all notifications, touch  in the top right corner.
- Touch and hold a notification and then touch **App info** to identify the application that created it. To turn off notifications from that application if needed, uncheck **Show notifications** in the App info screen.
- Most apps that send notifications, such as Gmail, have notification settings that you can adjust.



### NOTE:

If you turn off notifications for an app, you may miss its important alerts and updates. The notifications of some apps cannot be turned off.

## Use Control Switches

The Control Switches in the notification panel make it convenient to view or change the most common settings for your Spro2.

Open the notification panel and you can find the following Control Switches on the top of the screen. Slide left or right to find all switches.

- **Projector:** Touch to turn on or off the projector.
- **Projector Brightness:** Touch to adjust projection brightness.
- **HDMI:** When it is highlighted, you can project contents via an HDMI cable after connecting Spro2 to an HDMI source such as a laptop or TV STB (Set Top Box).
- **Miracast:** Touch to turn on or off Miracast.
- **Connect to USB stick:** When it is highlighted, you can connect Spro2 with a USB device.
- **Connect to PC:** When it is highlighted, you can connect Spro2 with your computer to transfer files via a USB cable.
- **Wi-Fi:** Touch to turn on or off Wi-Fi.
- **Bluetooth:** Touch to turn on or off Bluetooth.
- **Hotspot:** Touch to turn on or off the mobile Wi-Fi hotspot.
- **Airplane:** Touch to turn on or off airplane mode.
- **Data:** Touch to turn on or off data service over mobile networks.
- **Eye protection:** Touch to turn on or off the eye protection feature for projection.





- **Auto Rotate:** Touch to turn on or off the auto-rotate screen feature.

 **NOTE:**

Touch **Edit** beside **Control Switch** to select the switches you want to view in the notification panel.


 **NOTE:**

In the notification panel, touch  in the top right corner to access the full settings menu; touch  to access the projector settings menu.


## Entering Text

You can enter text using the onscreen keyboard. Some apps open it automatically. In others, you open it by touching where you want to type. Touch the **Back Key** to hide the onscreen keyboard.

## Change Input Methods

1. When you use the onscreen keyboard to enter text, the icon  appears on the status bar.
2. Open the notification panel and touch **Choose input method**.
3. Select the input method you need.








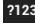
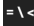

 **NOTE:**

The icon  appears only when more than one input method is installed.

## Android Keyboard

The Android Keyboard provides a layout similar to a desktop computer keyboard.






- Touch the alphabetic keys to enter letters. Touch and hold some specific keys to enter associated accented letters or numbers. For example, to enter è, touch and hold  and the available accented letters and number 3 appear. Then slide to choose è.
- Touch  to use uppercase. Double-tap  to lock uppercase. This key also changes to indicate the current case you are using:  for lowercase,  for uppercase, and  when locked in uppercase.
- Touch  to delete the text before the cursor.
- Touch  to select numbers and symbols. You can then touch  to find more.
- Touch and hold  to change the input languages or set up the Android Keyboard.

## Input Method Settings

Choose the input method settings by touching the **Home Key > SETTINGS** tab > **System > Local > Language & input**.

In the **KEYBOARD & INPUT METHODS** section, you can set the default input method and choose the settings for input methods.

## Editing Text

- **Move the insertion point:** Touch where you want to type. The cursor blinks in the new position, and a tab appears below it. Drag the tab to move the cursor.
- **Select text:** Touch and hold or double-tap within the text. The nearest word highlights, with a tab at each end of the selection. Drag the tabs to change the selection.
- **Cut or copy:** Select the text you want to manipulate. Then touch  (Cut) or  (Copy), or in landscape mode touch **Edit > Cut** or **Edit > Copy**.
- **Replace text with the clipboard text:** Select the text you want to replace. Then touch  or **PASTE**, or in landscape mode touch **Edit > Paste**.
- **Insert text from the clipboard:** Move cursor to the insertion point and then touch and hold the tab below the cursor. Release the finger and touch **PASTE**.

# Opening and Switching Apps

## Open an App

1. Touch the **Home Key > APPS** tab.
2. Slide left or right on the screen and touch an app to open it.

## Switch Between Recently Opened Apps

1. Touch and hold the **Menu Key**.

A list of the names and thumbnails of apps you've used recently opens. If you've been using more apps recently than can fit on the screen, you can slide the list left or right.

2. Touch a thumbnail to open that app.



### **NOTE:**

You can swipe a thumbnail up or down to remove it from the list, or touch **Remove All** to clear the list.

# Projection

You can use the projector of your Spro2 to project the files in Spro2 or other devices connected to it.

## **WARNING!**

Do not look directly into the projection lens or point the lens toward people or animals' eyes when the projector is on as this may cause injury to the eyes.

## Projecting a File Saved in Your Spro2

You can project a file stored in your Spro2.

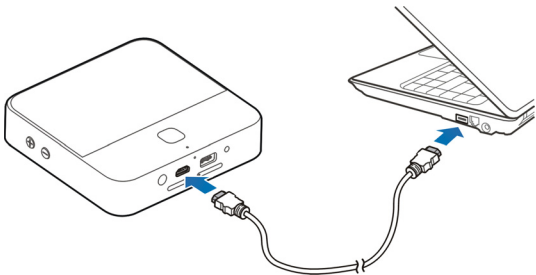
1. Open the file you want to project. For example, to open image files, touch the **APPS** tab on the home screen and touch **Gallery**. Then touch the album and the image to display it in full screen.
2. Turn on the projector. See [Turning On/Off the Projector](#).
3. Adjust the projection distance and place Spro2 on a flat surface.

## **NOTE:**

Press the **Power Key** twice quickly to adjust projection focus automatically.

## Projecting an HDMI Source

You can project contents via an HDMI cable when connecting your Spro2 to a laptop/PC or TV STB (Set Top Box). If you have an Apple device with the Lighting connector, you need to get a Lightning Digital AV Adapter (not included in the packaging).



1. Connect your Spro2 to the laptop/PC or TV STB via the supplied HDMI cable. (Laptop/PC or TV STB is not included in the packaging.)

For Apple devices with the Lighting connector, connect the device to the HDMI cable with the Lightning Digital AV Adapter, and then connect the HDMI cable to Spro2.

2. Turn on the projector. See [Turning On/Off the Projector](#).
3. Swipe down the status bar at the top of the screen and touch **HDMI** to highlight it.

- Operate your laptop/PC, TV STB, or Apple device to select the content you want to watch.



#### NOTES:

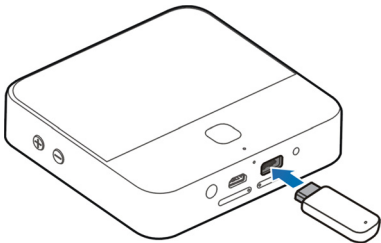
- If your laptop/PC has other kinds of output ports, such as VGA port, DVI port, DisplayPort and Mini DisplayPort, get a proper adapter to connect the laptop/PC with your Spro2.
- The maximum resolution of the HDMI source supported by Spro2 is 1080p (1920 × 1080 pixels). When projecting an HDMI source, the maximum resolution of the projection screen is 720p (1280 x 720 pixels).
- Press the **Power Key** twice quickly to adjust projection focus automatically.


If the HDMI source cannot be projected normally when you use a VGA to HDMI adaptor to connect your laptop/PC with Spro2, please follow the instructions below.

- Use an adaptor which supports 720p output.
- Set the screen resolution of your laptop/PC to 1280 × 720 pixels (for a Windows XP or Windows 7 laptop/PC), or right-click on the desktop and select **Graphics Options > Panel Fit > Maintain Display Scaling** (for a Windows 7 laptop/PC).
- Set the screen refresh rate of your laptop/PC to 60 Hz or below. For a Windows XP laptop/PC, right-click on the desktop and select **Properties > Settings > Advanced > Monitor > Screen refresh rate**; for a Windows 7 laptop/PC, right-click on the desktop and select **Screen resolution > Advanced settings > Monitor > Screen refresh rate**.


## Projecting a File Saved in Your USB Device

You can project a file stored on the USB device such as a USB flash drive or a portable hard drive.



1. Slide the status bar down to open the notification panel and ensure that “Connect to USB stick”  is highlighted.
2. Connect your USB device to Spro2 via the USB jack.
3. Touch the **Home Key > APPS tab > File Manager**.
4. Touch **USB DEVICE** to open the file you want to project.
5. Turn on the projector. See [Turning On/Off the Projector](#).

### NOTES:

- To disconnect the USB device from your Spro2, you should open the notification panel and touch . After Spro2

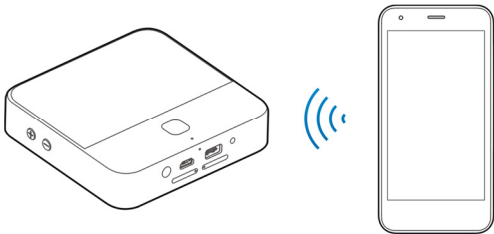


indicates that the external USB device has been unmounted, you can remove the USB device.

- The maximum capacity of the portable hard drive supported by Spro2 is 2 TB; the maximum capacity of the USB flash drive supported is 64 GB.
- Press the **Power Key** twice quickly to adjust projection focus automatically.

## Projecting a Source on Your Phone via Miracast (Wi-Fi Display)

You can display the content from compatible smart phone on your Spro2 with a Miracast (Wi-Fi Display) link.



1. Turn on the projector. See [Turning On/Off the Projector.](#)
2. Swipe down the status bar at the top of the screen and touch **Miracast** to highlight it.

3. Open a Wi-Fi display application on the phone to scan for available devices within range.
4. When you see the name of your Spro2 (MF97V) displayed in the available devices section, touch the name. The phone then automatically tries to pair with your Spro2.
5. Touch **Accept** on your Spro2. After successful connection, the contents in the phone will be displayed on the projector.
6. On your phone, choose the content you want to display.



#### NOTES:

- To end the Miracast link, touch the **Back Key** of Spro2.
- Press the **Power Key** twice quickly to adjust projection focus automatically.

## Using Miracast and Mobile Hotspot Simultaneously

You can use the projector via a Miracast link and share your mobile data with other devices at the same time.

1. Turn on the Mobile Hotspot function and configure the hotspot name and security options. See [Share Your Mobile Data Connection as a Wi-Fi Hotspot](#).
2. Turn Miracast on.
3. Connect your phone or device to Spro2 via Miracast or Mobile Hotspot as you need.

- ▶ To use Internet connection shared by Spro2, search for hotspots and connect to the one with the name starting with "DIRECT-" using your device's Wi-Fi feature. The password is the same as the one you set for Mobile Hotspot.
- ▶ To project content from your device via Miracast, connect to Spro2 using your device's Wi-Fi Display or Cast Screen feature.



### **NOTES:**

- If your device has been connected to the hotspot, it will be disconnected when you turn Miracast on. You need to search for hotspots and reconnect to the one with the name starting with "DIRECT-".
- Your device must support Wi-Fi in the 5 GHz band to use the hotspot or Miracast while Spro2's Mobile Hotspot and Miracast are both on.
- While the Miracast link is not active, at most 10 devices can connect to the hotspot; while the Miracast link is active, at most 5 devices can connect to the hotspot (or 4 devices if the Miracast link is used by another device).
- With Miracast active, your hotspot cannot support some advanced features such as user management, IP filtering, and WPS.

# Remote Control

You can install the Spro2 remote control app on your Android phone and use your phone as a remote control.

## Downloading and Installing the Remote Control App





1. Touch the **Home Key > SETTINGS** tab on Spro2.
2. Use your Android phone to scan the left Quick Response (QR) code on the screen and find the Spro2 remote control app in Google Play Store.
3. Download and install the remote control app on your phone.

## Connecting to Spro2 and Using the Remote Control App

Before using the remote control app, you need to connect your Android phone to Spro2 via Wi-Fi. You can use one of the following methods.

### Method one: Wi-Fi hotspot





1. Touch the **Home Key > SETTINGS** tab > **Projector > Control** and slide the **Remote controller** switch to the ON position.
2. Turn on the Wi-Fi hotspot feature on Spro2. See [Share Your Mobile Data Connection as a Wi-Fi Hotspot](#).

3. Connect your Android phone to the Wi-Fi hotspot of Spro2.
4. Open the remote control app on your phone and then the app will start to connect to Spro2.
5. For the first time use or after you restart Spro2, touch **OK** on Spro2 to accept the connection.
6. When the connection completes, the content on Spro2's screen will be displayed on your phone. You can then use your phone as the remote control.
  - ▶ Touch your phone's screen to control Spro2.
  - ▶ Use ,  and  on the remote control app screen as the **Back Key**, the **Home Key** and the **Menu Key** of Spro2.
  - ▶ Touch  to turn on the projector of Spro2 or open the projector settings pop-up menu.

### **Method two: connect to the same Wi-Fi network**

1. Touch the **Home Key** > **SETTINGS** tab > **Projector** > **Control** and slide the **Remote controller** switch to the ON position.
2. Connect your Android phone and Spro2 to the same Wi-Fi network (for example, the wireless router in your home). See [Connecting to Wi-Fi®](#).
3. Open the remote control app on your phone and then the app will start to connect to Spro2.
4. For the first time use or after you restart Spro2, touch **OK** on Spro2 to accept the connection.
5. When the connection completes, the content on Spro2's

screen will be displayed on your phone. You can then use your phone as the remote control.

- ▶ Touch your phone's screen to control Spro2.
- ▶ Use ,  and  on the remote control app screen as the **Back Key**, the **Home Key** and the **Menu Key** of Spro2.
- ▶ Touch  to turn on the projector of Spro2 or open the projector settings pop-up menu.

# Connecting to Networks and Devices

## Connecting to Mobile Networks

### Select Network Operator

1. Touch the **Home Key > SETTINGS tab > System > Network > Mobile networks > Network operators**. Your Spro2 automatically starts to search for all available networks. You can touch **Search networks** to search again.
2. Touch a network in the network list to register manually. You can also touch **Choose automatically** to select preferred network automatically.

### Control Mobile Data Use

#### To enable or disable data access:

1. Touch the **Home Key > SETTINGS tab > System > Network > Mobile networks**.
2. Check **Data enabled** to enable data access over the mobile network. Clear the check box to disable data access.

#### To enable always-on data access:

1. Touch the **Home Key > SETTINGS tab > System > Network > Mobile networks**.
2. Check **Always-on mobile data** to allow applications to update data automatically.

## **CAUTION:**

When you enable this option, more data traffic will be generated for automatic updates of applications data and your Spro2 will consume more power.

## Connecting to Wi-Fi®

Wi-Fi is a wireless networking technology that can provide Internet access at distances of up to 100 meters, depending on the Wi-Fi router and your surroundings.


### Turn Wi-Fi On and Connect to a Wi-Fi Network

1. Touch the **Home Key > SETTINGS** tab > **System > Network > Wi-Fi**.
2. Slide the **Wi-Fi** switch to the ON position to turn on Wi-Fi.
3. Touch a network name to connect to it.
4. If the network is secured, enter the password and touch **Connect**.

#### **NOTE:**

Your Spro2 automatically connects to previously used Wi-Fi networks when they are in range.

#### **NOTE:**

To connect to a Wi-Fi router that supports WPS, touch  on your Spro2's Wi-Fi menu and press the WPS button on your router.



## Get Notified of Open Networks

1. Touch the **Home Key > SETTINGS** tab > **System > Network > Wi-Fi**.
2. Slide the **Wi-Fi** switch to the ON position.
3. Touch the **Menu Key > Advanced**.
4. Check **Network notification**.

When Wi-Fi is on, you receive notifications in the status bar when your Spro2 detects an open Wi-Fi network. Uncheck the option to turn off notifications.

## Add a Wi-Fi Network

You can add a Wi-Fi network if the network does not broadcast its name (SSID), or to add a Wi-Fi network when you are out of range.

To connect to a secured network, you first need to get the security details from the network's administrator.

1. Touch the **Home Key > SETTINGS** tab > **System > Network > Wi-Fi**.
2. Slide the **Wi-Fi** switch to the ON position.
3. Touch **+**.
4. Enter the network SSID (name). If necessary, enter security or other network configuration details.
5. Touch **Save**.

## Forget a Wi-Fi Network

You can make your Spro2 forget about the details of a Wi-Fi network that you added - for example, if you don't want your Spro2 to connect to it automatically or if it is a network that you no longer use.


1. Touch the **Home Key > SETTINGS** tab > **System > Network > Wi-Fi**.
2. Slide the **Wi-Fi** switch to the ON position.
3. Touch the Wi-Fi network name and then touch **Forget**.

## Connect to a WPS Network

Wi-Fi Protected Setup (WPS) is a feature that makes it easy to add your Spro2 to the access points which support WPS.

You can use one of the following methods to connect your Spro2 to a wireless network using WPS.

### Method one: WPS button (Recommended)


1. Touch the **Home Key > SETTINGS** tab > **System > Network > Wi-Fi**.
2. Slide the **Wi-Fi** switch to the ON position.
3. Touch .
4. Press the WPS button on the wireless router and the access point will recognize your Spro2 and add it to the network.

## Method two: PIN of Spro2

1. Touch the **Home Key > SETTINGS** tab > **System > Network > Wi-Fi**.
2. Slide the **Wi-Fi** switch to the ON position.
3. Touch the **Menu Key > WPS Pin Entry**.
4. The WPS PIN displays on the screen. Enter the PIN into the access point's setup page.

After entering the PIN, your Spro2 automatically finds the access point and configures the connection.

## Method three: PIN of the access point

1. Touch the **Home Key > SETTINGS** tab > **System > Network > Wi-Fi**.
2. Slide the **Wi-Fi** switch to the ON position.
3. Touch a WPS-capable access point. It has the icon  next to its name.
4. In the window that opens, check **Show advanced options**.
5. Touch the field below **WPS PIN from access point** and select **Enable**.
6. Enter the PIN of the access point and touch **Connect**. You can find the PIN on the configuration page of the access point.



### NOTE:

For detailed information about the WPS feature of the access point, please refer to its user documents.

## Adjust Advanced Wi-Fi Settings

1. Touch the **Home Key** > **SETTINGS** tab > **System** > **Network** > **Wi-Fi**.
2. Touch the **Menu Key** > **Advanced** to adjust the following settings.
  - ▶ **Network notification:** Get notifications in the status bar when Wi-Fi is on and an open network is available.
  - ▶ **Keep Wi-Fi on during sleep:** Set whether to keep Wi-Fi on in sleep mode.
  - ▶ **Scanning always available:** Allow Google's location service and other apps to scan for networks, even when Wi-Fi is turned off.
  - ▶ **Avoid AP without Internet:** Only use Wi-Fi networks that have Internet connection.
  - ▶ **Wi-Fi band:** Select the Wi-Fi frequency band according to the available Wi-Fi networks.
  - ▶ **Install certificates:** Install certificates from the internal storage or the external microSDHC card. Some Wi-Fi networks need to find the correct certificates to grant your access.
  - ▶ **Wi-Fi optimization:** Minimize battery usage when Wi-Fi is on.
  - ▶ **MAC address:** Check the MAC address.
  - ▶ **IP address:** Check the IP address.

## Using Wi-Fi Direct®

Wi-Fi Direct allows Wi-Fi devices to connect to each other without the need for wireless access points (hotspots).



### NOTE:

Wi-Fi Direct is not completely compatible among different device manufacturers. You may need to install third-party applications to share files between different devices from different manufacturers.

## Connect to Another Device via Wi-Fi Direct

1. Touch the **Home Key > SETTINGS** tab > **System > Network > Wi-Fi**.
2. If Wi-Fi is off, slide the **Wi-Fi** switch to the ON position.
3. Touch the **Menu Key > Wi-Fi Direct**. Your Spro2 will search for other devices enabled with Wi-Fi Direct connections.
4. Touch a device name under PEER DEVICES to connect with it.

The other device will receive a connection prompt and need to accept the request for connection. Both devices may need to enter a common PIN.

Once connected the device is displayed as “Connected” in the PEER DEVICES list.

## Send Data via Wi-Fi Direct

1. Open the appropriate application and select the file or item you want to share.
2. Select the option for sharing via Wi-Fi Direct. The method may vary by application and data type.
3. Touch a device your Spro2 has connected with or wait for it to search for new devices and touch one of them.

## Receive Data via Wi-Fi Direct

When an attempt to transfer data via Wi-Fi Direct is received, you can see a notification in the status bar. Open the notification panel, touch the notification and select **Accept** to start receiving the data.

Received files are stored automatically in a dedicated folder (*WiFiShare*, for instance). You can access them with the **File Manager** app.

## Connecting to Bluetooth® Devices

Bluetooth® is a short-range wireless communication technology. Phones or other devices with Bluetooth capabilities can exchange information wirelessly within a distance of about 10 meters. The Bluetooth devices must be paired before the communication is performed.

## Turn Bluetooth On/Off

1. Touch the **Home Key > SETTINGS tab > System > Network > Bluetooth.**
2. Slide the **Bluetooth** switch to the ON or OFF position.

When Bluetooth is on, the  icon will appear in the status bar.

## Make Your Spro2 Visible

In order to work with other phones or devices that have Bluetooth, you need to make your Spro2 'visible' to them.

1. Touch the **Home Key > SETTINGS tab > System > Network > Bluetooth.**
2. Slide the **Bluetooth** switch to the ON position if Bluetooth is off.
3. Touch your device name on the top of the screen to make your Spro2 visible or invisible.



### NOTE:

Touch the **Menu Key > Visibility timeout** to set the Bluetooth visibility timeout of your Spro2.

## Change the Device Name

1. Touch the **Home Key > SETTINGS tab > System > Network > Bluetooth.**
2. Slide the **Bluetooth** switch to the ON position if Bluetooth is off.

3. Touch the **Menu Key > Rename device**.
4. Edit the name and touch **Rename**.

## Pair With Another Bluetooth Device

1. Touch the **Home Key > SETTINGS** tab > **System > Network > Bluetooth**.
2. Slide the **Bluetooth** switch to the ON position if Bluetooth is off.

Your Spro2 automatically scans for and displays the IDs of all available Bluetooth devices in range. You could touch **SEARCH FOR DEVICES** on the top right of the screen if you want to scan again.

3. Touch the device you want to pair with.
4. Confirm that the Bluetooth passkeys are the same between the two devices and touch **Pair**. Alternately, enter a Bluetooth passkey and touch **Pair**.

Pairing is successfully completed when the other device accepts the connection or the same passkey is entered.




### NOTE:

The Bluetooth passkey may be fixed for certain devices, such as headsets and hands-free car kit. You can try entering 0000 or 1234 (the most common passkeys), or refer to the documents for that device.



## Unpair From a Bluetooth Device

You can make your Spro2 forget its pairing connection with another Bluetooth device. To connect to the device again, you may need to enter or confirm a passkey again.

1. Touch the **Home Key > SETTINGS** tab > **System > Network > Bluetooth** and ensure that Bluetooth is turned on.
2. In the list of paired devices, touch the icon  beside the Bluetooth device you want to unpair from.
3. Touch **Unpair**.

## Send Data via Bluetooth

1. Open the appropriate application and select the file or item you want to share.
2. Select the option for sharing via Bluetooth. The method may vary by application and data type.
3. Touch a Bluetooth device your Spro2 has paired with or wait for it to search for new devices and touch one of them.

## Receive Data via Bluetooth

1. Turn Bluetooth on before trying to receive data via Bluetooth.



### NOTE:

If your Spro2 has not been paired with the sending device, you may need to keep Spro2 visible through Bluetooth.

2. Flick down the status bar and touch .

3. Touch **Accept** to start receiving the data.

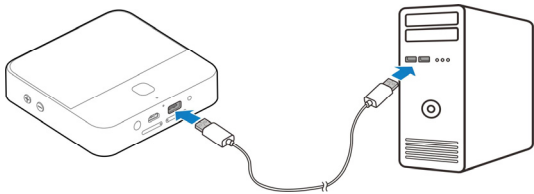
Depending on whether a microSDHC card is installed, received files are stored automatically in a dedicated folder (*Bluetooth*, for instance) in the internal storage or microSDHC card. You can access them with the **File Manager** app.





## Connecting to Your Computer via USB

You can connect your Spro2 to a computer with a USB cable (not included) and transfer music, pictures, and other files in both directions. Your Spro2 stores these files in the internal storage or on a removable microSDHC card. For more information, see [Storage](#).

### Connect Your Spro2 to a Computer via USB

1. Connect your Spro2 to the computer using a USB cable (not included). Insert the end of the cable into the USB jack of Spro2 and insert the other end of the cable into an available USB port on your computer.



- Slide the status bar down to open the notification panel and touch "Connect to PC"  to highlight it.
- Open the notification panel and touch  **Connected as ...** or touch the **Home Key > SETTINGS** tab > **System > Device > USB mode**.
- Choose one of the following options:
  - ▶ **Install driver:** Install the driver needed for some USB connection modes (such as MTP). You only need to install the driver on the same PC once.  
 **NOTE:**  
You can also install the driver on PC by running the executable file in the new CD-ROM drive.
  - ▶ **Media device (MTP):** Transfer media files on Windows® or Mac®.  
 **NOTE:**  
For Windows XP, please install the drivers and Media Player 11 (or later version) when you use Media device (MTP) for the first time.
- When you are done, disconnect your Spro2 with the computer.

## Connect With Windows Media® Player

You can sync music, picture, and video files on your phone and the computer installed with Windows Media Player.

1. Connect Spro2 with your computer via USB and choose **Media device (MTP)**.
2. Open Windows Media Player and synchronize music, picture, and video files.

## Disconnect Your Spro2 From the Computer

To disconnect Spro2 from the computer, simply unplug the USB cable when you're finished.

## Remove the microSDHC Card From Your Spro2

If you need to remove the microSDHC card while Spro2 is on, you must unmount it first.

1. If Spro2 is connected to a computer, disconnect it.
2. Touch the **Home Key > SETTINGS** tab > **System > Device > Storage**.
3. Scroll down and touch **Unmount SD card > OK**.
4. When the **Unmount SD card** menu changes to **Mount SD card**, you can now safely remove the microSDHC card from Spro2.



### NOTE:

If you unmount the microSDHC card, some apps that you are using will stop and may be unavailable until you remount the microSDHC card.

## Erase the microSDHC Card

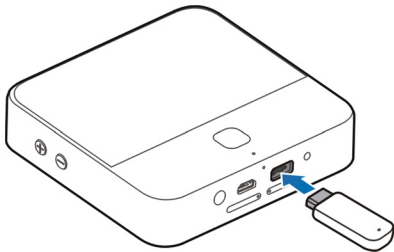
1. Touch the **Home Key** > **SETTINGS** tab > **System** > **Device** > **Storage**.
2. Scroll down and touch **Erase external SD card** > **Erase SD card** > **Erase everything**.

### **!** CAUTION:

The formatting procedure erases all data on the microSDHC card, after which the files CANNOT be retrieved.

## Connecting to a USB Device

You can connect a USB device such as a USB flash drive or a portable hard drive to Spro2 via the USB jack, and touch the **Home Key** > **APPS** tab > **File Manager** > **USB DEVICE** to view the files saved in the USB device.





## NOTES:

- Before connecting your Spro2 with a USB device, slide the status bar down to open the notification panel and ensure that "Connect to USB stick"  is highlighted.
- To disconnect a USB device from your Spro2, you should open the notification panel and touch . After Spro2 indicates that the external storage device has been unmounted, you can remove the USB device.

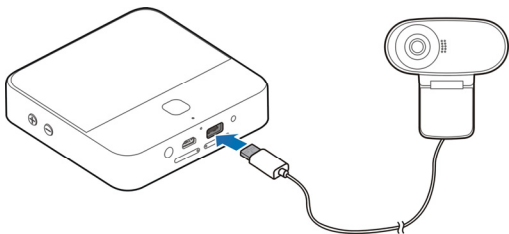



## CAUTION:

Before unmounting the USB device, you should not disable "Connect to USB stick" or enable "Connect to PC", otherwise the connection between your Spro2 and the USB device will be broken, and the data in the USB device may be damaged or lost.

## Connecting to a Webcam (Not Included)

You can connect a webcam to Spro2 via the USB jack and have video calls by using a video chat app such as Google Hangouts and Skype.



1. Slide the status bar down to open the notification panel and ensure that "Connect to USB stick"  is highlighted.
2. Connect a webcam to Spro2 via the USB jack.
3. Open a video chat app to make a video call.

 **NOTES:**

- You can download and install camera apps on Spro2 to get more functions, such as picture taking and video recording.
- Not all webcams are supported by Spro2. Please refer to the webcam manual for detailed instructions.

## Sharing Your Mobile Data Connection

You can share your Spro2's data capabilities through tethering or by activating the mobile hotspot feature to create a mobile Wi-Fi hotspot.


## Share Your Mobile Data Connection via USB

You can access the Internet on your computer via the USB tethering feature of your Spro2. The feature needs data connection on a mobile network and may result in data charges.

 **NOTE:**

You cannot transfer files between Spro2 and the computer when Spro2 is USB tethered.

1. Connect Spro2 to your computer with a USB cable.
2. Slide the status bar down to open the notification panel and ensure that "Connect to PC" is highlighted.
3. Touch the **Home Key > SETTINGS** tab > **System > Network > More....**
4. Check **USB tethering**. A new network connection will be created on your computer.

 **NOTE:**

To stop sharing your data connection, uncheck **USB tethering** or disconnect the USB cable.

## Share Your Mobile Data Connection via Bluetooth

If your computer can obtain an Internet connection via Bluetooth, you can configure your Spro2 to share its mobile data connection with your computer.



1. Pair your Spro2 with your computer via Bluetooth.
2. Configure your computer to obtain its network connection via Bluetooth. For more information, please see your computer's documentation.
3. Touch the **Home Key > SETTINGS tab > System > Network > More....**
4. Check **Bluetooth tethering**. Your computer is now sharing your Spro2's data connection.

**NOTE:**

To stop sharing your data connection, uncheck **Bluetooth tethering**.


## Share Your Mobile Data Connection as a Wi-Fi Hotspot

You can share your Spro2's data connection with other devices by turning Spro2 into a mobile Wi-Fi hotspot. The feature needs data connection on a mobile network and may result in data charges.

**NOTE:**

When the mobile Wi-Fi hotspot feature is enabled, you cannot access the Internet via Wi-Fi connection with Spro2. You can still remain connected to the Internet via mobile data network.

1. Touch the **Home Key > SETTINGS tab > System > Network > Mobile Hotspot**.
2. Slide the switch to turn on Mobile Hotspot.
3. On another device, locate your Spro2 via Wi-Fi and connect with it.

Or, if the device supports Wi-Fi Protected Setup, touch the WPS icon on the device, and then touch  on your Spro2.

 **NOTE:**

To stop sharing your data connection, turn off **Mobile Hotspot**.

## Set Your Wi-Fi Hotspot

You can change the name of your Spro2's mobile hotspot (SSID), secure it with a password, and set other options.

1. Touch the **Home Key > SETTINGS** tab > **System > Network > Mobile Hotspot**.
2. Touch **CONFIGURE** and set the following options as follows.
  - ▶ **Network Name:** Enter or edit a network name that other devices see when scanning for Wi-Fi networks.
  - ▶ **Wi-Fi band:** Set the band that the mobile hotspot should be available on.
  - ▶ **Channel:** To avoid interference with other Wi-Fi networks, try using a different channel.
  - ▶ **Security:** Choose a security option: **None** (not recommended) or **WPA2 PSK** (other users can access your mobile hotspot only if they enter the correct password). When you select **WPA2 PSK**, touch the **Password** field to edit the security password.
  - ▶ **Show password:** Check this option to display the password in the Password field.

- ▶ **Broadcast network name (SSID):** Check this option to broadcast your network SSID. If the broadcast is disabled, other users need to get your network name to find the mobile hotspot.


3. Touch **Save** to save your settings.

## Connecting to Virtual Private Networks

Virtual private networks (VPNs) allow you to connect to the resources inside a secured local network. VPNs are commonly deployed by corporations, schools, and other institutions to let people access local network resources when not on campus, or when connected to a wireless network.

Depending on the type of VPN you are using, you may be required to enter your login credentials or install security certificates before you can connect to your VPN. You can get this information from your network administrator.

### Add a VPN

1. Touch the **Home Key > SETTINGS** tab > **System > Network > More... > VPN**.
2. Touch  and fill in the information provided by your network administrator.
3. Touch **Save**.

The VPN is added to the list on the VPN screen.



#### **NOTE:**

You must set a lock screen pattern, PIN or password before using VPN.

## Connect to a VPN

1. Touch the **Home Key > SETTINGS tab > System > Network > More... > VPN.**
2. Touch the VPN that you want to connect to.
3. When prompted, enter any requested credentials, and then touch **Connect.**

## Modify a VPN

1. Touch the **Home Key > SETTINGS tab > System > Network > More... > VPN.**
2. Touch and hold the VPN that you want to modify.
3. Touch **Edit profile** and edit the VPN settings you want.
4. Touch **Save.**

# Accounts

## Adding or Removing Accounts

You can add multiple Google accounts. You may also add other kinds of accounts, depending on the apps installed on your Spro2.

### Add an Account

1. Touch the **Home Key > SETTINGS** tab > **System > Device > Add account**.
2. Touch the type of account you want to add.
3. Follow the onscreen steps to enter the information about the account. Most accounts require a username and password, but the details may vary. You may also need to obtain some information from IT support or your system administrator.

When the account is successfully added, it is displayed in the **ACCOUNTS** section in the **Settings** menu.

### Remove an Account


Removing an account will delete it and all information associated with it from your Spro2, such as Gmails and web albums.

1. Touch the **Home Key > SETTINGS** tab > **System > Device**.


2. Touch the account category in the **ACCOUNTS** section and then touch the account.
3. Touch the **Menu Key > Remove account > Remove account**.

## Configuring Account Sync

### Configure Auto Sync Setting

1. Touch the **Home Key > SETTINGS** tab > **System > Network > Data usage**.
2. Touch  and check or uncheck **Auto-sync data**.
  - ▶ When automatic sync is turned on, changes you make to information on your Spro2 or on the web are automatically synced with each other.
  - ▶ When auto sync is turned off, you need to sync manually to collect Gmails, updates, or other recent information.

### Sync Manually

1. Touch the **Home Key > SETTINGS** tab > **System > Device**.
2. In the **ACCOUNTS** section, touch the account category and then the account you want to sync.
3. Touch  > **Sync now**. Or touch the types of information you want to sync.

## Change an Account's Sync Settings

1. Touch the **Home Key > SETTINGS** tab > **System > Device**.
2. In the **ACCOUNTS** section, touch the account category and then the account. The Sync screen appears, showing a list of information the account can sync.
3. Check or uncheck items as you need. Checked types of information on Spro2 and the web will be kept in auto-sync.

# Gmail™

After you sign in to your Google account on Spro2, you can send and retrieve Gmail messages with the **Gmail** app.

## **NOTE:**

This feature may not be available in certain regions or with certain service providers.

## Opening Your Gmail Inbox

Touch the **Home Key > APPS tab > Gmail**. The inbox screen appears. If you haven't signed in, you will be prompted to do so or create a new account.

Touch the **Menu Key > Refresh** to refresh your inbox and download new messages.



## Switching Accounts

Gmail displays conversations, messages, and settings from one Google account at a time. If you have signed in to more than one Google account on your Spro2, you can switch accounts and view information in each account.





1. From your inbox, touch the current account at the top left of the screen.
2. From the menu that appears, touch the account you want to see. The account's inbox will open.



## Writing and Sending a Message

1. Open your Gmail inbox and switch to the account you want to use for sending the message.
2. Touch .
3. Enter a contact name or email address in the 'To' field. Touch the space key before entering each additional recipient.
4. Enter the email subject and compose the email text.
5. To add an attachment, touch the **Menu Key > Attach file**.
6. Touch  at the top right of the screen to send the message.

## Replying to or Forwarding a Message

1. Open the Gmail message you want to reply to or forward to another person.
2. Do the following as you need:
  - ▶ To reply to the sender, touch .
  - ▶ To reply to the sender and all recipients of the original message, touch  > **Reply all**.
  - ▶ To forward the message, touch .
3. Edit your message and touch .

## Working With Received Attachments

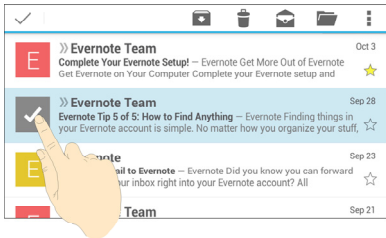
When a message has an attachment, Gmail displays information about it in the **ATTACHMENTS** section of the email. Depending on the attachment type, the applications installed on your Spro2 as well as your settings, you may preview, view, or save the attachment.


## Working With Labels

Message labels include both labels you create and default labels such as **Sent**, **Starred**, and **Outbox**. You can organize your emails by labeling them or adding stars to them. Labels also help you sort your messages, similar to folders.


### To label or change labels:

1. Open the **Gmail** app and touch in the message list the sender images at the left side of the messages you want to label.



2. At the top right of the screen, touch  > **Change labels**.
3. Check or uncheck labels in the new screen and touch **OK**.

#### **To add stars to messages:**

1. Open the **Gmail** app and touch in the message list the sender images in front of the messages you want to star.
2. At the top right of the screen, touch  > **Add star**.

#### **To view messages by label:**

1. Open the **Gmail** app and touch the current account at the top of the screen without checking any message.
2. Touch a label below **ALL LABELS** to view messages with that label.

## **Changing Gmail Settings**

From your inbox, slide right from the left edge of the Gmail screen, scroll down and touch **SETTINGS** to change **General settings**, which apply to all Gmail accounts, or other settings that only apply to specific accounts.

# Dolphin Browser

Use **Dolphin Browser** to view web pages and search for information.

## Opening the Browser

Touch the **Home Key** > **APPS** tab > **Dolphin Browser** to use the web browser.


The browser also opens when you touch a web link - for example, in a Gmail.

## Open a Web Page or Search the Web

1. Open the **Dolphin Browser** app.
2. Touch the address box at the top of the web page. If the address box isn't visible, scroll up the screen to show it.
3. Enter the address (URL) of a web page. Or, enter terms you want to search for.
4. Touch a URL or search suggestion or touch the enter key on the keyboard to open the web page or search results.



### NOTE:

Touch  beside the address box if you want to stop opening the page.

## Set the Homepage


Your home page opens when you restart the **Dolphin Browser** app.

1. Open the **Dolphin Browser** app.
2. Touch the **Menu Key > Settings > Customize > Set my homepage**.
3. Check **Use the new tab page** to use a blank tab page as the home page; check **Customize** and touch the website box below to type a URL as the homepage.


## Using Multiple Browser Tabs

You can open several web pages at the same time (one page in each tab) and switch between them freely.

### To open a new browser tab:

Touch  at the top right of the browser screen and then a new browser tab opens.

### To switch between tabs:

1. Touch the tabs icon  at the top right corner. The number in the icon indicates the number of currently active browser tabs.
2. Swipe horizontally to scroll through the list of opened tabs.
3. Touch the thumbnail of the tab you want to open.

 **NOTE:**

Swipe a thumbnail vertically or touch its **X** to close the tab.

 **NOTE:**

You can also slide left or right on the top of the browser screen to view all opened browser tabs. Touch one tab to view it or touch **X** on a tab to close it.

## Downloading Files

1. Touch and hold an image or a link to a file or to another webpage.
2. In the menu that opens, touch **Save image** or **Save link**.
3. Edit the file name and the save location if necessary, and then touch **Download**.

You can view or open the downloaded files by touching the **Menu Key > Downloads**.

## Changing Browser Settings

You can configure a number of browser settings to customize the way you browse the web, including several that you can use to control your privacy.

To open the browser settings screen, touch the **Menu Key > Settings** in the web page screen.


# Maps

## Activating Location Services

To use location-related applications, such as finding your location on Google Maps™, you must have location services turned on on your Spro2.

1. Touch the **Home Key > SETTINGS** tab > **System > Local > Location**.
2. Slide the switch at the top right corner to turn location services on or off.

## Getting Your Location


1. Touch the **Home Key > APPS** tab > **Maps**.
2. Touch  at the bottom.

The map centres on a circle that indicates your location.

## Searching for a Location

1. Touch the **Home Key > APPS** tab > **Maps**.
2. Touch the search box on the top.
3. Enter the address or the type of business or establishment you're looking for in the search box. If suitable suggestions appear below the search box, touch one to search for it.

 **NOTE:**

You can also touch  beside the search box to use voice search.

4. Touch the search key on the keyboard.

The results list is displayed. You can also touch the **Back Key** to view red points indicating search results appear on the map.

5. Touch a result in the list to view its detailed information.


- or -

Touch a red point on the map to open a card at the bottom with summary information about the location. You can also swipe the bottom card left or right to see other results.

Slide the card up to find more information about the location as well as options for getting directions and more.

## Getting Directions to Your Destination

Maps can provide directions for travel by foot, public transportation, or car.

1. Touch the **Home Key > APPS tab > Maps**.
2. Touch  beside the search box.
3. Select the mode of transportation and then enter a start and end point. If your location is found, it will appear in the start point field by default.



4. As suggested routes appear, touch one to see it on the map. You can also swipe the bottom card left or right to choose other routes.

Slide the bottom card up to see the route directions in a list.

## Searching for Local Places

Google Maps helps you find all kinds of businesses and establishments around you. You can rate these places and get recommendations.

1. Touch the **Home Key > APPS tab > Maps**.
2. Navigate the map view to the area you'd like to explore. You can explore nearby locations or pan the map to another location.
3. Touch the search box at the top.
4. Touch the **Explore nearby** card and choose one option in the new screen. Results will appear on cards.
5. Touch a location to see it on the map or get directions. You can also slide up the bottom card to find out more information, such as the street address, website, and street view, save it to your Google account, or share it with others.



### **NOTE:**

The "Explore nearby" feature is not available for all areas.

# Google Search

You can search for information on the web or on your Spro2 using Google Search.

## Searching With Text

You can search for information on the Internet or on Spro2 (such as music, apps and contacts) by entering text.

1. Touch the **Home Key > APPS tab > Google**.
2. Enter the terms you want to search for in the search box and touch the enter key on the keyboard, or touch a search suggestion that appears below the search box.

## Searching by Speaking

You can also search the web or perform certain tasks by speaking.

1. Touch the **Home Key > APPS tab > Google**.
2. Touch the microphone icon to the right of the search box, or just say 'OK, Google'.



### NOTE:

You can also touch the **Home Key > APPS tab > Voice Search**.

3. Speak the terms you want to search for or the question you want to ask. When you're finished speaking, your speech is analyzed and the search is initiated.

## Changing Search Settings

Open the **Google** app and touch the **Menu Key > Settings** to set the search options, voice recognition and output settings, change accounts and privacy settings, and set the notification options for your account.

# Gallery

## Opening Gallery

Touch the **Home Key > APPS tab > Gallery** to view albums of your pictures and videos.


## Working With Albums

When you open Gallery, all pictures and videos on your Spro2 are displayed in a number of albums.


### To view album contents:

Touch an album to view the pictures and videos it contains.

### To share albums, pictures, or videos:

1. Touch and hold an item in the Albums view to select an album or after you open an album to select a picture or a video.
2. Touch more items that you want to share.
3. Touch  and select how you want to share the items.

### To delete albums:

1. Touch and hold an album until it is selected.
2. Touch more albums that you want to delete.
3. Touch  > **OK**.

## Working With Pictures

Touch a picture in an album to view the picture in full screen. When viewing a picture in full screen, the following features are available.



- Swipe horizontally to see more pictures or videos.
- Pinch a picture or video to make it smaller. You'll then see a filmstrip-style view of all your pictures and videos in a row. Swipe left or right to scan through them all.



### NOTE:

You can delete a picture or video by swiping it up or down in the filmstrip view. If you accidentally delete one, touch **UNDO** to retrieve it.


- Double-tap the picture, or pinch two fingers together or spread them apart to zoom out or in.

- Touch the **Menu Key** to rotate, delete, share, print, or rename the picture, check file details, set it as the lock screen wallpaper, or change slideshow setting.
- Touch **Slideshow** to browse the album contents in a slideshow.
- Touch the **Back Key** to return to the album.


**NOTE:**


Some options may not be available for certain albums or pictures.

## Playing Videos

1. Touch an album in the gallery and then touch the thumbnail of a video.
2. Touch  at the center and select a player to start playing. Touch the video screen to view the playback controls.

# Play Music

The **Play Music** application () works with Google Music, Google's online music store and streaming service. You can stream via Wi-Fi and listen to your favorite songs that you've added to your online Google Music library. You can also play audio files you've copied directly to your Spro2 from a computer.



 **NOTE:**

The availability of Google Music is dependent on your region. If it is not available, or you don't have a Wi-Fi connection, you can only play music stored on your Spro2.

## Copying Music Files to Your Spro2

Before using **Play Music**, you can copy or download audio files to your Spro2'.

### Copy From a Computer

1. Connect your Spro2 and the computer with a USB cable.
2. Slide the status bar down to open the notification panel and touch "Connect to PC"  to highlight it.
3. In the notification panel, touch  **Connected as ...** and select **Media device (MTP)**. See [Connect Your Spro2 to a Computer via USB](#).

4. Copy the music files from the PC and paste them to your Spro2.

## Download From the Internet

You can download music files when browsing web pages. See [Downloading Files](#).


## Receive via Bluetooth

You can receive music files from other devices via Bluetooth. See [Receive Data via Bluetooth](#).

## Receive via Wi-Fi Direct

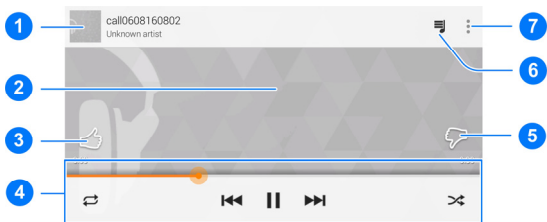
You can receive music files from other devices via Wi-Fi Direct. See [Receive Data via Wi-Fi Direct](#).

## Playing Your Music

Touch the **Home Key > APPS tab > Play Music**. If you are prompted, select an account to access its online music library. The app searches your online library and your Spro2 for music and playlists before displaying your combined music library, organized by **GENRES, ARTISTS, ALBUMS** and **SONGS**. You can touch  > **My Library / Playlists** to view all the music and playlists. To change views of your library, swipe left or right.



Touch a song to play it. When the song is playing, touch the summary information at the bottom to display the playback screen.



Number	Function
1	Song and artist information. Touch or drag down to return to the music library.
2	Album artwork (if available). Slide left/right to switch to the next/previous song in the playlist.
3	Give the song a thumbs-up.
4	Playback control. Skip songs, pause and resume playback, use shuffle or repeat. Drag the progress bar to jump to any part of the song.
5	Give the song a thumbs-down.
6	Touch to see the current playlist (queue).
7	Get more options.

You can still control the music when you are not in the playback screen.

- In the music library of the **Play Music** app, touch the summary information at the bottom of the screen to restore the playback screen.
- In other apps, flick down the notification panel. Touch the song title to restore the playback screen, or just pause/resume playback or skip songs.
- When the screen is locked, the song information, album cover as well as playback control is displayed on the top of the screen. You can pause/resume playback or skip songs.



## Managing Playlists

Create playlists to organize your music files into sets of songs, so that you can play the songs you like in the order you prefer.



### To create a playlist or add a song to a playlist:

Touch  next to a song and select **Add to playlist**.

### To remove a song from a playlist:

1. Touch  > **Playlists** in the **Play Music** app and open a playlist.
2. Touch  next to a song in the playlist.
3. Touch **Remove from playlist**.

### To delete a playlist:

1. Touch  > **Playlists** in the **Play Music** app.
2. Touch  next to the playlist you want to delete.
3. Touch **Delete** > **OK**.

### **NOTE:**

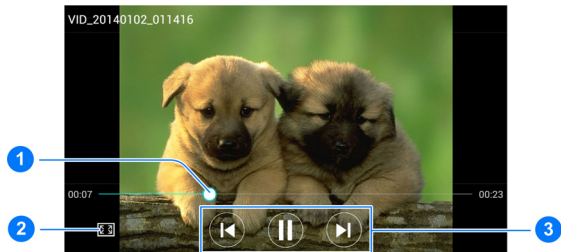
Certain automatically created playlists such as **Last added** cannot be deleted.

# Video Player

Touch the **Home Key > APPS tab > Video Player** to view your video library and play various kinds of videos.

## Playing and Controlling Videos

Touch a video in the video library to play it. The following video play screen appears.



Number	Function
1	Drag the progress bar to jump to any part of the video. You can also slide horizontally on the video to rewind or fast forward.
2	Crop the video or fit it to the screen.
3	Pause or resume, skip to the previous or next video.

**NOTE:**

Slide vertically on the right or left part of the screen to adjust screen brightness or video volume.

## Managing Video Files

### Delete a Video Clip

1. Touch and hold a video in the video library.
2. Touch **Delete** > **OK**.

### Sort Video Clips









1. Touch the **Menu Key** > **Sort** in the video library.
2. Choose to sort your videos by **Name**, **Size**, **Type** or **Time**.

**NOTE:**

You can also touch the **Menu Key** > **Settings** in the video library to configure the video player settings.

# Sound Recorder

**Sound Recorder** enables you to record voice memos and listen to them whenever you like.

1. Touch the **Home Key > APPS tab > Sound Recorder**.
2. Touch  to start recording. During recording, you can do the following:
  - ▶ Touch  /  to pause or continue the recording.
  - ▶ Touch  > **Delete** to cancel the recording.
3. Touch  to stop recording. The memo is automatically saved. You can touch  to play it immediately, or touch  or  at the top right corner to share or delete the recording.

## **NOTE:**


Touch **My records** at the top right of the screen to see all your voice memos. Touch and hold a memo to rename, share or delete it.

# More Apps

## Chrome™

Touch the **Home Key > APPS tab > Chrome** to browse the Internet. Chrome on your Spro2 can sync bookmarks, browsing history, and opened tabs from your Google account, so that you can maintain the same experience across your Spro2, phone, PC, tablet and other devices.

## Dolby

Touch the **Home Key > APPS tab > Dolby** to select or customize a Dolby profile. You can also touch  to turn off Dolby.

## Downloads

The **Downloads** app keeps a record of the files you have downloaded using the apps such as **Chrome** and **Gmail**.

Touch the **Home Key > APPS tab > Downloads** to check the record.

- Touch a file to open it with the appropriate application.
- Touch and hold a file to delete or share it.







## Drive

Touch the **Home Key > APPS tab > Drive**. The **Drive** app allows you to store files on Google servers for free after you sign in to your Google account. You can access them on your computers, your phones and other devices, share them, or collaborate with others.

## File Manager

Quickly access all of your images, videos, audio clips, and other types of files on your internal storage, the microSDHC card and the connected USB device.

Touch the **Home Key > APPS tab > File Manager**. You can find the file you need by category in the **CATEGORY** tab, or touch **DEVICE**, **SD CARD** or **USB DEVICE** to browse folders and files on the internal storage, the microSDHC card or the USB device.

- Touch folders and files to access stored items.
- Touch  > **Multi-Select** to select items and access option icons such as  (Copy),  (Move),  (Share), or  (Delete).
- To copy or move an item, navigate to a new location and touch **PASTE**.
- Touch  to create a new folder in the current directory.



## Google+

Touch the **Home Key > APPS tab > Google+**. After signing in to your Google account, you can connect with friends and family with this app.


Google+ allows you to set up circles of people to organize them into groups for sharing content. You can create hangouts for group or 1-to-1 chats, upload photos and videos, and much more.

## Hangouts

Touch the **Home Key > APPS tab > Hangouts**. With this app, you can bring groups of friends together into a simple group conversation with text, photos, and video chat.

## Power Media Player

Touch the **Home Key > APPS tab > Power Media Player**. You can use this app to listen to music, view photos and watch videos on your Spro2.

To view detailed help information, touch  **> Help** from the main screen of Power Media Player.

## WPS Office

Touch the **Home Key > APPS tab > WPS Office**. You can use the app to open or create Word, Excel, PowerPoint and TXT files, and read PDF files on your Spro2.

## YouTube

Touch the **Home Key > APPS tab > YouTube**. You can watch videos and share your own with your friends, family, and the world.

# Google Play™ Store


Touch the **Home Key** > **APPS** tab > **Play Store**. You can buy or rent music, books, movies, apps, and download them to your Spro2.

## **NOTE:**

The content you can access in Google Play Store depends on your region.

## Browsing and Searching for Apps

You can browse apps by category. Touch a top-level category, such as **GAMES** and touch the app from any subcategory.

You can also search for apps using an app's name or description, or the developer's name. Just touch  and enter the search terms.

## Downloading and Installing Apps

When you find the app you are interested in through browsing or searching, touch it to open its details screen, where more information about the app is displayed.

1. Touch **INSTALL** (free apps) or the price (paid apps). If the app is not free, you need to sign in to your Google Wallet™ account and select a payment method.

### **CAUTION:**

Once installed, some apps can access many functions or a significant amount of your personal data. The Play Store will show you what the app can access. Touch **ACCEPT** to proceed, or touch the **Back Key** to cancel.

2. Wait for the app to be downloaded and installed automatically. Payment needs to be authorized before paid apps start downloading.

The app is successfully installed when a notification icon appears in the status bar. You can find the new app after touching the **Home Key > APPS** tab.

## Creating a Google Wallet™ Account

You must have a Google Wallet account associated with your Google account to purchase items from the Google Play Store app.

Do one of the following:

- On your computer, go to *wallet.google.com* to create a Google Wallet account.
- The first time you use your Spro2 to buy an item from Google Play Store, you're prompted to enter your billing information to set up a Google Wallet account.




## **WARNING!**

When you've used Google Wallet once to purchase items from the Google Play Store app, Spro2 remembers your password so you don't need to enter it the next time. For this reason, you should secure your Spro2 to prevent others from using it without your permission.


## Managing Your Downloads

After you've downloaded and installed an app, you can rate it, view it in a list with your other downloaded apps, configure it to update itself automatically, and so on.

### View Your Downloaded Apps

1. In the Play Store screen, touch  > **My apps**.
2. Your list of installed apps opens, you can touch one to rate it, uninstall it, request a refund, and so on.

### Uninstall an App

1. In the Play Store screen, touch  > **My apps**.
2. Touch an app to open its details screen.
3. Touch **UNINSTALL > OK**.

# Settings

Touch the **Home Key > SETTINGS** tab > **System** or **Projector**. The setting options contain most of the tools for customizing and configuring your Spro2.

## Network

### Mobile Hotspot

Share your Spro2's mobile data connection via Wi-Fi. See [Share Your Mobile Data Connection as a Wi-Fi Hotspot](#).

### Airplane Mode

Touch the **Home Key > SETTINGS** tab > **System > Network** and swipe the **ON/OFF** switch beside **Airplane mode** to turn airplane mode on or off. All your Spro2's radios that transmit data are turned off when airplane mode is on.

### Wi-Fi

Turn Wi-Fi on or off and configure your Wi-Fi connections. See [Connecting to Wi-Fi<sup>®</sup>](#).

When Wi-Fi is on, touch the **Menu Key > Wi-Fi Direct** in the **Wi-Fi** menu to share data between two devices via Wi-Fi directly. See [Using Wi-Fi Direct<sup>®</sup>](#).

## Bluetooth

Turn Bluetooth on or off and configure your Bluetooth connections. See [Connecting to Bluetooth® Devices](#).

## Mobile Networks

Control mobile data use, select mobile network and check the access point name. See [Connecting to Mobile Networks](#).


## Data Usage

Touch the **ON/OFF** switch to turn on or off mobile data.

You can check how much data has been used during the time cycle you set, set mobile data limit and warning, see what app has been using mobile data, allow data roaming or restrict background data for individual apps.



### NOTES:

- The data usage is measured by your Spro2, and the data usage accounting of your service provider may differ.
- Touch  > **Mobile Hotspots** to select Wi-Fi networks that are mobile hotspots. Data usage on recognized mobile hotspots will be restricted to avoid high mobile data bills.

## VPN

Touch the **Home Key** > **SETTINGS** tab > **System** > **Network** > **More...** > **VPN** to set up and connect to virtual private networks. See [Connecting to Virtual Private Networks](#).

## USB Tethering and Bluetooth Tethering

Touch the **Home Key > SETTINGS** tab > **System > Network > More...** and then check **USB tethering** or **Bluetooth tethering** to share your Spro2's mobile data connection with PCs or other devices via USB or Bluetooth. See [Share Your Mobile Data Connection via USB](#) and [Share Your Mobile Data Connection via Bluetooth](#).

## View Verizon Account

Touch the **Home Key > SETTINGS** tab > **System > Network > More... > View Verizon Account** to check your Verizon account and other information.

## Device

### Sound

Adjust volumes (see [Adjusting Volume](#)), toggle sound and mute (see [Switching to Silent Mode](#)), set up notification sound (see [Changing Notification Sound](#)), set Dolby sound effects to enhance the sound quality, and select system sounds.

### Display

- **Brightness:** Set the brightness of the screen display.
- **Wallpaper:** Select a background image for the lock screen.
- **Auto-rotate screen:** Check this option to let Spro2 automatically change the orientation of some onscreen content based on the position of the device.



- **Sleep:** Set the length of time of inactivity before the screen turns off automatically.
- **Font size:** Set the font size of the text on the screen.
- **Pulse notification light:** Flash the indicator light to notify you of new events, such as the arrival of a new Gmail message.
- **Touch key light duration:** This feature lets you control the backlight of the touch keys (the **Home Key**, the **Back Key**, and the **Menu Key**). Choose one of the following options to set the backlight duration.
  - ▶ **Automatic:** Let your Spro2 turn on or off the touch keys backlight automatically.
  - ▶ **Last 2 seconds / Last 5 seconds:** The touch keys light for 2 or 5 seconds each time you touch the screen or touch keys while the screen is turned on.
  - ▶ **Always on:** Keep the touch keys backlight on while the screen is turned on.
  - ▶ **Always off:** Turn off the touch keys backlight.
- **Cast screen:** Connect with TVs that support wireless display and project your Spro2's content on the TV screen wirelessly. You need to turn on Wi-Fi first. For detailed introduction, please refer to the TV manual.
- **Power key light:** Check this option to turn on the light of the **Power Key**.

## Storage

Check memory information for your internal storage and the microSDHC card as well as the USB device when they are available.

You can choose the default location for new data, such as files downloaded and voice recorded. Touch **Save location** and select **Device** or **SD card** to store items in the internal storage or the installed microSDHC card.

Touch **Unmount SD card** to unmount the microSDHC card from your Spro2 so that you can safely remove the card while Spro2 is on. Touch **Erase external SD card** to delete all data on the microSDHC card.

## Battery

Check how much power remains for the battery and what has been using the battery.

You can touch an app to adjust its settings in order to save battery life.

## USB Mode

Select your USB connection type when connecting your Spro2 to a USB device or PC. See [Connect Your Spro2 to a Computer via USB](#) and [Connecting to a USB Device](#).

## Accounts

Manage your accounts and synchronization. Touch **Add account** to sign in to or create accounts on your Spro2.

Touch an account type to see that type of accounts you have added and adjust the accounts settings.

## Local

### Apps

See apps installed on your Spro2 and manage them.

Touch an app in the **DOWNLOADED**, **RUNNING**, or **ALL** tab to see its information. You can stop the app, uninstall the app, or clear data and cache.

#### **NOTE:**

Not all applications can be uninstalled.

### Location

Activate location services to determine your location. See [Activating Location Services](#).

### Security

- **Screen lock:** Disable the screen lock or enable it with long press, pattern, PIN, or password. See [Protecting Your Spro2 With Screen Locks](#).

- **Make pattern visible:** Show the pattern as you draw it. This option is available when unlock pattern is set.
- **Automatically lock:** Set the time needed for the lock protection to be activated after the screen turns off. This option is available when unlock pattern, PIN or password is set.
- **Power button instantly locks:** Lock protection is activated immediately when you press the **Power Key**. This option is available when unlock pattern, PIN or password is set.
- **Owner info:** Enter the text that you may display on the lock screen.
- **Encrypt device:** Encrypt your data on Spro2 to protect your privacy. See [Protecting Your Spro2 With Encryption](#).
- **Set up SIM/RUIM card lock:**
  - ▶ **Lock SIM card:** Activate or deactivate the PIN lock to require PIN before accessing the micro-SIM card.
  - ▶ **Change SIM PIN:** Change the PIN used to access the micro-SIM card.
- **Make passwords visible:** Display passwords as you enter them.
- **Device administrators:** View or deactivate apps you have authorized to be device administrators.
- **Unknown sources:** Check this option to permit installation of apps from sources other than the Play Store.
- **Verify apps:** Disallow or display a warning before you install applications that may cause harm.

- **Storage type:** Check the credential storage type.
- **Trusted credentials:** Display trusted CA certificates.
- **Install from SD card:** Install certificates from the microSDHC card.
- **Clear credentials:** Delete all certificates.

## Backup and Reset

- **Back up my data:** Back up app data, Wi-Fi passwords, and other settings to Google servers after you sign in to your Google account.
- **Back up account:** Set the Google account that the data is backed up to.
- **Automatic restore:** Restore previously backed up settings and data when you reinstall an app.
- **Factory data reset:** Reset your Spro2 to factory default settings. All your personal data from Spro2's internal storage will be erased. You can also erase the data on the microSDHC card during the process.

## Language and Input

- **Language:** Select a language and region for your system.
- **Spell checker:** Use Android spell checker to check for spelling errors when entering text.
- **Personal dictionary:** Add new words to Spro2's dictionary or remove words from the dictionary. The words you add are used for spelling check and word suggestion.

- **KEYBOARD & INPUT METHODS:** Configure text input settings. See [Input Method Settings](#).
- **Voice Search:**
  - ▶ **Languages:** Select the language you use when entering text by speaking or searching by speaking.
  - ▶ **Speech output:** Control when your Spro2 should output speeches.
  - ▶ **“OK Google” Detection:** When this is enabled, you can say “OK Google” when using the Google app rather than touching the microphone icon to initiate a voice search or action.
  - ▶ **Offline speech recognition:** Download one or more additional language packages so you can use speech recognition when you do not have a network connection.
  - ▶ **Block offensive words:** Hide offensive words when you use Google voice typing to transcribe your voice into text.
  - ▶ **Bluetooth headset:** Listen for your voice input through a Bluetooth headset when it is connected to your Spro2.
- **Text-to-speech output:**
  - ▶ **PREFERRED ENGINE:** Select the speech synthesis engine you want to use or change its settings.
  - ▶ **Speech rate:** Select how quickly you want the synthesizer to speak.
  - ▶ **Listen to an example:** Play a brief sample of the speech synthesizer, using your current settings.

- ▶ **Default language status:** Check whether the text-to-speech output feature supports the current system language.
- **Pointer speed:** Select how fast the pointer/mouse should scroll when you connect Spro2 to a trackpad or mouse accessory.

## Date and Time

Set date, time, time zone, and how date and time are displayed. You can also use network-provided data.

## Accessibility

Configure accessibility plug-ins on your Spro2, such as using **TalkBack** for low-vision users.

## Printing

You can manage Google Cloud Print service or other printer plug-ins installed from the Google Play Store or your printer manufacturer.

## Software Updates

Check your system's software status and upgrade the system.

## Developer Options

**Developer options** contains settings that are useful when developing Android applications. The menu is hidden until you touch **SW Version** in the **About device** menu 7 times.

### **WARNING!**

The developer option settings are intended for development use only. They can cause your Spro2 and applications on it to break or misbehave.

## About Device

View Spro2's status, legal information and other information.

## Projector Settings

Touch the **Home Key > SETTINGS tab > Projector** and then you can configure the following options for the projector feature.

- **Image:**
  - ▶ **Focus:** Turn on or off automatic focus or touch “+” and “-” to make manual adjustment.
  - ▶ **Keystone:** Turn on or off automatic keystone distortion adjustment or adjust it manually to correct image during a tilted projection.
  - ▶ **Brightness:** Adjust projection brightness.
  - ▶ **Color correction:** Adjust projection color.



- **Mode:**
  - ▶ **Source:** Turn on HDMI or Miracast as the projection source.
  - ▶ **LABB:** Enable or disable the Local Area Brightness Boost feature or adjust its level. The projector can adaptively gain up regions of an image that are dim relative to the average picture level.
  - ▶ **CAIC:** Enable or disable the Content-Adaptive Illumination Control feature. The projector can automatically adjust illumination power to consume less battery while maintaining constant image brightness.
- **Control:**
  - ▶ **Projector:** Turn on or off the projector.
  - ▶ **Gesture switch:** After this feature is enabled, you can swipe up or down using THREE fingers on the screen to turn on or off the projector when Spro2's screen is turned on.
  - ▶ **Remote controller:** Enable this feature before using the remote control app in your Android phone to control Spro 2. See [Remote Control](#).
  - ▶ **Eye protection:** This feature allows Spro2 to lower projection brightness automatically when Spro2 detects its own quick movement.
  - ▶ **Auto Projector:** You can enable Spro2 to turn on or off the projector automatically at the time you set.
  - ▶ **Restore:** Restore default projector settings.

# Troubleshooting

If you encounter problems while using Spro2, or if it performs abnormally, you can refer to the chart below. If your particular problem cannot be resolved using the information in the chart, contact the dealer where you purchased Spro2.

<b>Problem</b>	<b>Possible causes</b>	<b>Possible solution</b>
Poor reception	The network signal is too weak at your current location, for example, in a basement or near a tall building, because wireless transmissions cannot effectively reach it.	Move to a location where the network signal can be properly received.
	The network is busy at the current time (for example, during peak times, there may be too much network traffic).	Avoid using Spro2 at such times, or try again after waiting a short time.
	You are too far away from a base station for your service provider.	You can request a service area map from your service provider.











<b>Problem</b>	<b>Possible causes</b>	<b>Possible solution</b>
Unable to select certain features	Your service provider does not support these features, or you have not applied for services that provide these features.	Contact your service provider.
Battery cannot be charged or the charging is slow	The battery or battery charger is damaged.	Contact the dealer.
	Spro2's temperature is below 0 °C or higher than 45 °C.	Adjust the battery charging environment to avoid extremes of temperature.
	Poor contact between Spro2 and the charger.	Check all connectors to ensure that all connections have been properly made.
Shortened standby time	The standby time is related to your service provider system configuration.	If you are located in an area where signaling is weak, temporarily power off Spro2.
	The battery is depleted. In high temperature environments, battery life will be shortened.	Contact the dealer to replace the battery.



<b>Problem</b>	<b>Possible causes</b>	<b>Possible solution</b>
	If you are not able to connect to the network, Spro2 will continue to send out signals as it attempts to locate a base station. Doing so consumes battery power and will consequently shorten standby time.	Change your location to one where the network is accessible, or temporarily turn off your Spro2.
Cannot turn Spro2 on	Battery power has been depleted.	Recharge the battery.
micro-SIM card error	micro-SIM card malfunction or damage	Take the micro-SIM card to your service provider for testing.
	micro-SIM card inserted improperly	Insert the micro-SIM card properly.
	Debris on the micro-SIM card contacts	Use a soft, dry cloth to clean the micro-SIM card contacts.
Unable to connect to the network	The micro-SIM card is invalid.	Contact your service provider.
	You are not within the network's service area.	Check the service area with your service provider.

<b>Problem</b>	<b>Possible causes</b>	<b>Possible solution</b>
	The signal is poor.	Move to an open space, or if you are inside a building, move closer to a window.
PIN Code blocked	You have entered an incorrect PIN code three consecutive times.	Contact your service provider. If the service provider provides the micro-SIM card's PUK code, use the PUK code to unlock the micro-SIM card.
Poor Wi-Fi signal	The Wi-Fi network signal is too weak at your current location.	Move closer to the Wi-Fi hotspot or a location where is no obstacle between Spro2 and the hotspot.
Spro2 crashes, reboots, freeze, or cannot be powered on	Some third-party software is not compatible with your Spro2.	Uninstall the software that may cause the problem.
		Upgrade Spro2's software.
		Reset Spro2 to factory status.

# For Your Safety

## General Safety

	Your device can produce a loud sound.		Don't use at gas stations.
	Avoid contact with anything magnetic.		Your device may produce a bright or flashing light.
	Keep away from pacemakers and other electronic medical devices.		Don't dispose of your device in fire.
	Turn off when near explosive materials or liquids.		To prevent possible hearing damage, do not listen at high volume levels for long periods.
	Only use approved accessories.		Avoid extreme temperatures.

	Don't take your device apart.		Avoid contact with liquids. Keep your device dry.
----------------------------------------------------------------------------------	-------------------------------	-----------------------------------------------------------------------------------	---------------------------------------------------

## Radio Frequency (RF) Energy

This device is designed and manufactured not to exceed the emission limits for exposure to radio frequency (RF) energy set by the Federal Communications Commission of the United States.

During SAR testing, this device is set to transmit at its highest certified power level in all tested frequency bands, and placed in positions that simulate RF exposure in usage near the body with the separation of 10 mm. Although the SAR is determined at the highest certified power level, the actual SAR level of the while operating can be well below the maximum value. This is because the device is designed to operate at multiple power levels so as to use only the power required to reach the network. In general, the closer you are to a wireless base station antenna, the lower the power output.

The exposure standard for wireless employs a unit of measurement known as the Specific Absorption Rate, or SAR. The SAR limit set by the FCC is 1.6 W/kg.

Tests for SAR are conducted using standard operating positions accepted by the FCC with the device transmitting at its highest certified power level in all tested frequency bands.

The FCC has granted an Equipment Authorization for this model device with all reported SAR levels evaluated as in compliance with the FCC RF exposure guidelines. SAR information on this model device is on file with the FCC and can be found under the Display Grant section of [www.fcc.gov/oet/ea/fccid](http://www.fcc.gov/oet/ea/fccid) after searching on FCC ID: SRQ-MF97V.

For this device, the highest reported SAR value for near the body is 0.79 W/kg. The highest reported SAR value for simultaneous transmission is 0.93 W/kg.

While there may be differences between the SAR levels of various devices and at various positions, they all meet the government requirement. SAR compliance for body operation is based on a separation distance of 15 mm between the unit and the human body. Carry this device, at least 15 mm away from your body to ensure RF exposure levels are compliant to or below the reported level. To support body operation, choose the belt clips or holsters, which do not contain metallic components, to maintain a separation of 15 mm between the device and your body.

## FCC Compliance

This device complies with part 15 of the FCC Rules. Operation is subject to the following two conditions: (1) This device may not cause harmful interference, and (2) this device must accept any interference received, including interference that may cause undesired operation.



 **CAUTION:**

Changes or modifications not expressly approved by ZTE could violate the warranty policy. ZTE will not hold any responsibility of any damage related to that.

 **NOTE:**

This equipment has been tested and found to comply with the limits for a Class B digital device, pursuant to part 15 of the FCC Rules.

These limits are designed to provide reasonable protection against harmful interference in a residential installation. This equipment generates, uses and can radiate radio frequency energy and, if not installed and used in accordance with the instructions, may cause harmful interference to radio communications. However, there is no guarantee that interference will not occur in a particular installation. If this equipment does cause harmful interference to radio or television reception, which can be determined by turning the equipment off and on, the user is encouraged to try to correct the interference by one or more of the following measures:

- Increase the separation between the equipment and receiver.
- Connect the equipment into an outlet on a circuit different from that to which the receiver is connected.
- Consult the customer service technician for help.

## CTIA Requirements

- Do not disassemble or open, crush, bend or deform, puncture or shred the battery.
- Do not modify or remanufacture, attempt to insert foreign objects into the battery, immerse or expose to water or other liquids, expose to fire, explosion or other hazard.
- Only use the battery for the system for which it is specified.
- Only use the battery with a charging system that has been qualified with the system per CTIA Certification Requirements for Battery System Compliance to IEEE 1725. Use of an unqualified battery or charger may present a risk of fire, explosion, leakage, or other hazard.
- Do not short circuit a battery or allow metallic conductive objects to contact the battery terminals.
- Replace the battery only with another battery that has been qualified with the system per this standard, IEEE-Std-1725. Use of an unqualified battery may present a risk of fire, explosion, leakage or other hazard.
- Promptly dispose of used batteries in accordance with local regulations.
- Battery usage by children should be supervised.
- Avoid dropping the device or battery. If the device or battery is dropped, especially on a hard surface, and the user suspects damage, take it to a service center for inspection.

- Improper battery use may result in a fire, explosion or other hazard.
- The device shall only be connected to CTIA certified adapters, products that bear the USB-IF logo or products that have completed the USB-IF compliance program.

## Distraction

### Driving

Full attention must be given to driving at all times in order to reduce the risk of an accident. Using this device while driving can cause distraction and lead to an accident. You must comply with local laws and regulations restricting the use of wireless devices while driving.

### Operating Machinery

Full attention must be given to operating the machinery in order to reduce the risk of an accident.

## Product Handling

### General Statement on Handling and Use

You are responsible for how you use your device and any consequences of its use.

You must always switch off your device wherever the use of your device is prohibited. Use of your device is subject to safety measures designed to protect users and their environment.

- Always treat your device and its accessories with care and keep it in a clean and dust-free place.
- Keep the screen and projection lens clean. A dirty screen or projection lens may slow down the device's reaction to your operations or lower projection image quality.
- Clean your device and its accessories with a soft material such as a cleaning cloth, or microfiber. Do not use alcohol or other corrosive substances for cleaning or allow them to get inside.
- Do not expose your device or its accessories to open flames or lit tobacco products.
- Do not expose your device or its accessories to liquids, moisture or high humidity.
- Do not drop, throw or try to bend your device or its accessories.
- Do not use harsh chemicals, cleaning solvents, or aerosols to clean the device or its accessories.
- Do not paint your device or its accessories.
- Do not attempt to disassemble your device or its accessories.

- Do not expose your device or its accessories to extreme temperatures. The operation temperature range for the device is minimum of 23 °F and maximum of 104 °F (minimum – 5 °C and maximum + 40 °C).
- Do not place your device inside or near heating equipments or high pressure containers, such as water heaters, microwave ovens, or hot cooking utensils. Otherwise, your device may be damaged.
- Please check local regulations for disposal of electronic products.

## **Children**

Do not leave your device or its accessories with your young children alone. The device is not a toy. They might accidentally damage the device. The projection light may cause discomfort to them or others without parents' direction.

The device contains small parts that may cause an injury or may become detached and create a choking hazard.

## **Demagnetization**

To avoid the risk of demagnetization, do not allow electronic devices or magnetic media close to your device for a long time.

## **Electrostatic Discharge (ESD)**

Do not touch the micro-SIM card's metal connectors.

## **Air Bags**

Do not place a device in the area over an air bag or in the air bag deployment area as an airbag inflates with great force and serious injury could result.

## **Seizures/Blackouts**

The device can produce a bright or flashing light. A small percentage of people may be susceptible to blackouts or seizures (even if they have never had one before) when exposed to flashing lights or light patterns such as when playing games or watching video. If you have experienced seizures or blackouts or have a family history of such occurrences, please consult a physician. To reduce the risk of blackouts or seizures, use your device in a well lit room and take frequent breaks.

## **Repetitive Strain Injuries**

To minimize the risk of Repetitive Strain Injury (RSI) when texting or playing games with your device:

- Do not grip the device too tightly.
- Press the buttons lightly.
- Use the special features which are designed to minimize the times of pressing buttons, such as Predictive Text.
- Take lots of breaks to stretch and relax.

## **Loud Noise**

This device is capable of producing loud noises, which may damage your hearing. Turn down the volume before using headphones, Bluetooth stereo headsets or other audio devices.

## **Device Heating**

Your device may become warm during charging and during normal use.

## **Electrical Safety**

### **Accessories**

Use only approved accessories.

Do not connect with incompatible products or accessories.

Take care not to touch or allow metal objects, such as coins or key rings, to contact or short-circuit in the charging jack terminals.

Never puncture the surface of the device with sharp objects.

### **Faulty and Damaged Products**

Do not attempt to disassemble the device or its accessories.

Only qualified personnel can service or repair the device or its accessories.

If your device or its accessories have been submerged in water, punctured, or subjected to a severe fall, do not use it until it has been checked at an authorized service center.

## Radio Frequency Interference

### General Statement on Interference

Care must be taken when using the device in close proximity to personal medical devices, such as pacemakers and hearing aids.

Please consult your doctor and the device manufacturer to determine if operation of your device may interfere with the operation of your medical device.

### Pacemakers

Pacemaker manufacturers recommend that a minimum separation of 15 cm be maintained between a wireless device and a pacemaker to avoid potential interference with the pacemaker. To achieve this, do not use this device near your pacemaker and do not carry it near the breast.

### Hearing Aids

People with hearing aids or other cochlear implants may experience interfering noises when using wireless devices or when one is nearby.



The level of interference will depend on the type of hearing device and the distance from the interference source, increasing the separation between them may reduce the interference. You may also consult your hearing aid manufacturer to discuss alternatives.

## **Medical Equipment**

Switch off your wireless device when requested to do so in hospitals, clinics or health care facilities. These requests are designed to prevent possible interference with sensitive medical equipment.

## **Aircraft**

Switch off your wireless device whenever you are instructed to do so by airport or airline staff.

Consult the airline staff about the use of wireless devices on board the aircraft and enable airplane mode of your device when boarding an aircraft.

## **Interference in Vehicles**

Please note that because of possible interference to electronic equipment, some vehicle manufacturers may forbid the use of your device in their vehicles.

## **Explosive Environments**

### **Gas Stations and Explosive Atmospheres**

In locations with potentially explosive atmospheres, obey all posted signs to turn off wireless devices such as your device or other radio equipment.

Areas with potentially explosive atmospheres include fuelling areas, below decks on boats, fuel or chemical transfer or storage facilities, areas where the air contains chemicals or particles, such as grain, dust, or metal powders.

### **Blasting Caps and Areas**

Power off your device when in a blasting area or in areas posted power off “two-way radios” or “electronic devices” to avoid interfering with blasting operations.