

Lounger Soaking +Heat Walk In Bathtub



OA2660-H-L-HB Left Drain



OA2660-H-R-HB Right Drain

Actual Size: 26.75'' W x 59'' L x 43'' H
 Shipping Size: 29'' W x 61'' L x 50'' H
 Shipping Weight: 380lbs.
 Net Weight: 220lbs.
 Water Capacity: 90 gal. US (unoccupied)
 55-75 gal. US (occupied)
 Approx. Drain Time: +/- 2 minutes (unoccupied bathtub)
 at ideal home plumbing conditions
 Approx. Fill Time: +/- 14 minutes (unoccupied bathtub)
 based on in-house water pressure

Options:

- Left or Right Drain/Door

Included Features:

1. Acrylic Tub Shell:
 - High quality acrylic
 - Excellent color uniformity
 - High Gloss White Finish
 - Fiberglass Reinforced
2. Low threshold step in 7''
3. Stainless Steel Frame with Adjustable Leveling Legs
4. Seat: 20 3/4'' W x 17'' H x 14 1/4'' L
5. Two (2) front and one (1) end removable access panels
6. Heated seat and backrest
7. Wall and deck mounted stainless steel safety grab bar in plated chrome finish

8. Five-Piece Fast Fill Faucet Set with Chrome Finish
 - T18 GPM (Average) @ 60 PSI
 - Designer spout
 - Hot and cold lever handles
 - Pull out, hand held, 5 ft. retractable stainless steel braided hose

Plumbing:

- Two (2) x 4' long stainless steel braided water supply lines with 1/2'' IPS connectors
- Two (2) x 2'' floor drains
- Two (2) PVC 2'' drain elbows

Electrical:

Electrical requirement is one dedicated 120 V electrical line with a 20AMP GFCI standard three prong outlet

Warranty:

- Lifetime limited warranty on acrylic walk in tub shell, frame, and door.
- 5 Year parts warranty*

Lounger Soaking +Heat Walk In Bathtub



Hk c`FYa cj UWyž
F Yj YfgjVY`9bX`
5WwYgg`DUbY`g

HcY`? M_Yf
5WwYgg`DUbY`

Textured Floor

Door Handle

Two 2" Drains

Diverter (2)

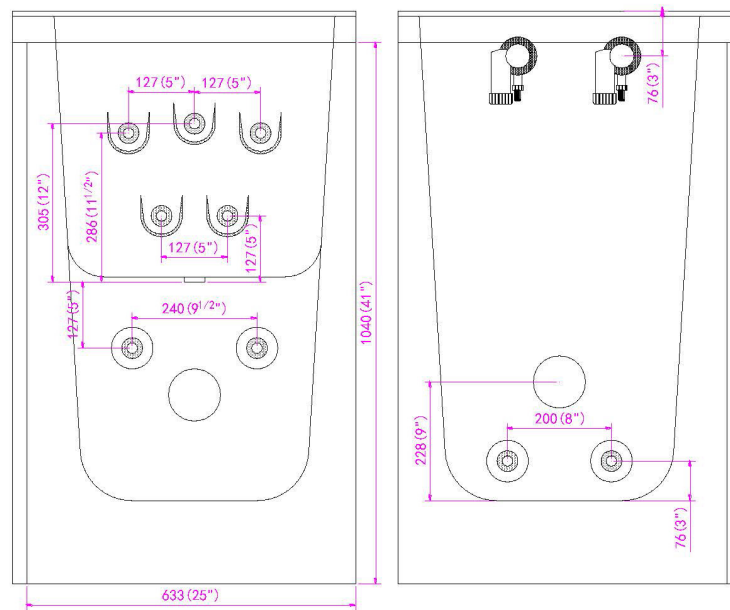
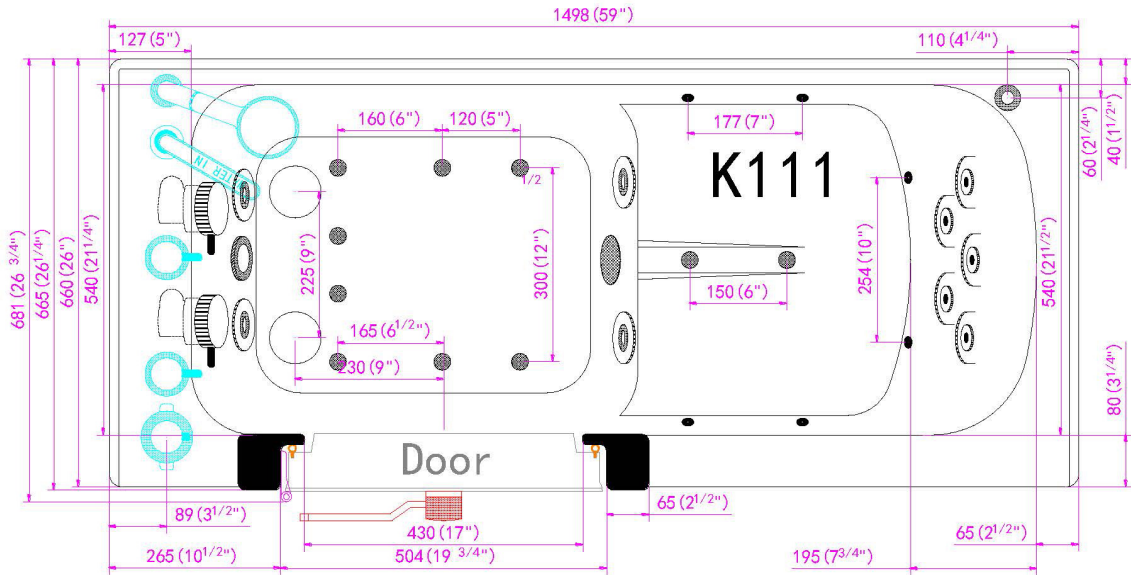
Spout

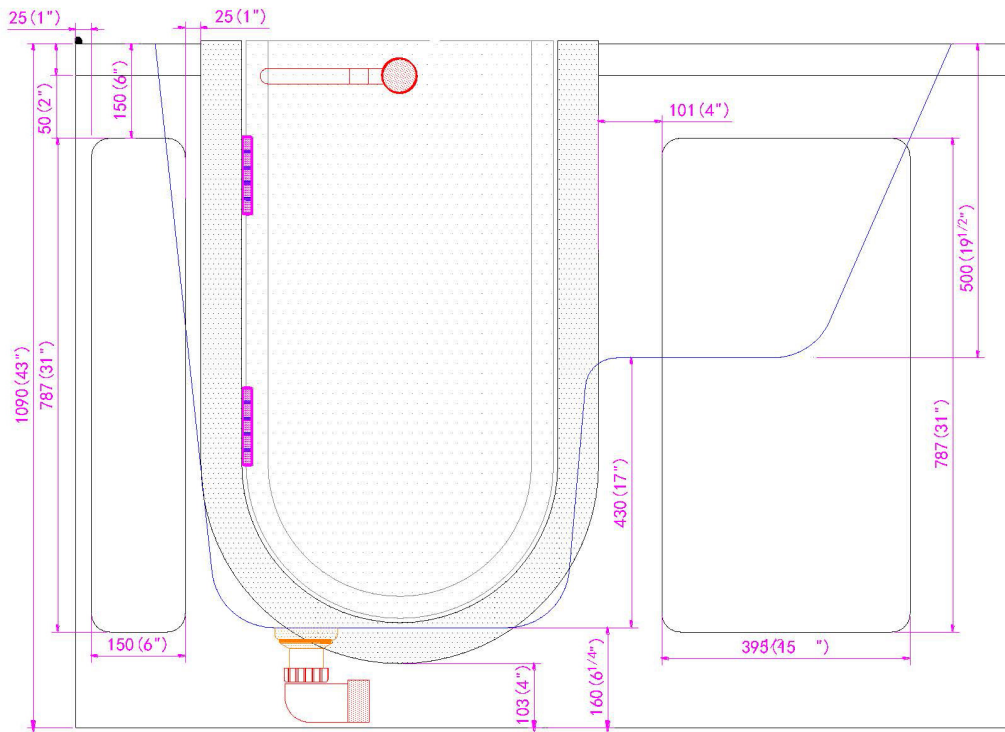
Pull Out
Hand Shower

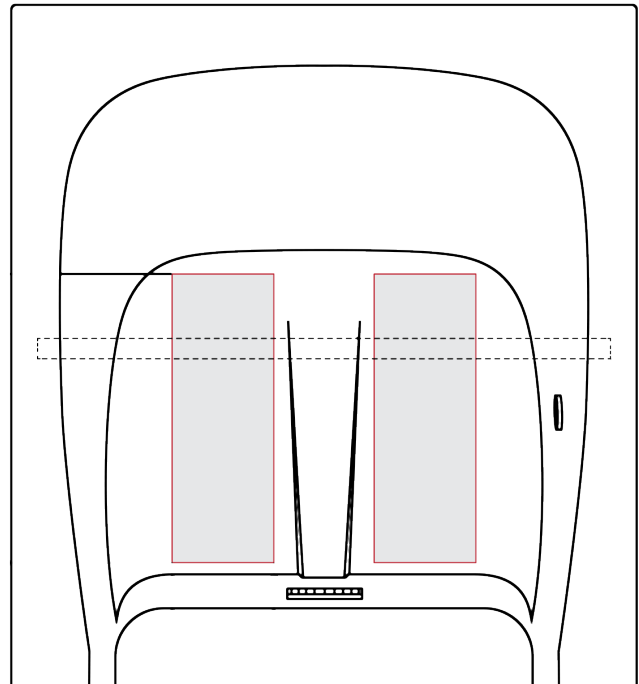
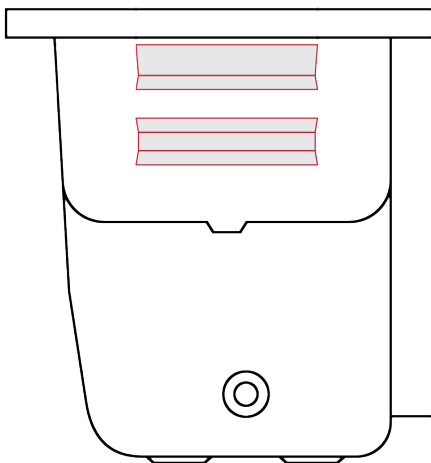
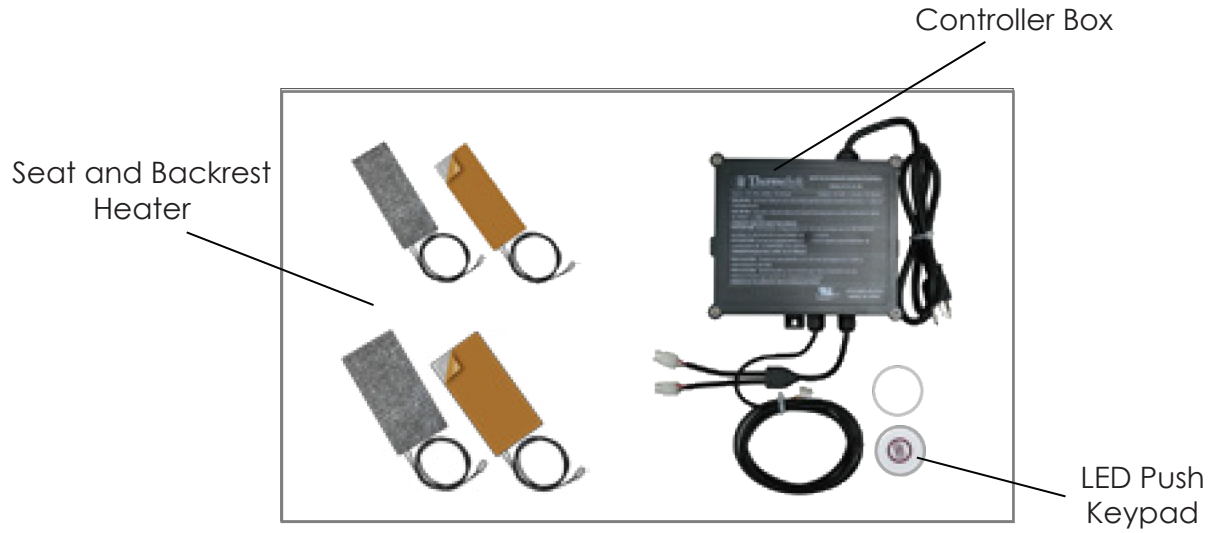
Grab Bar



Lounger Soaking +Heat Walk In Bathtub







Heated seat and backrest come assembled with a digital push control usually installed on the large access panel.