

ULTRA FAUCETS

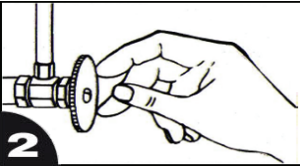
INSTALLATION



Model No.: UF08X42C & UF08X45C

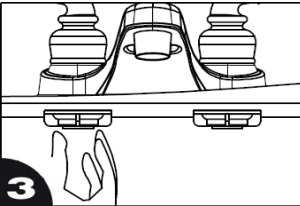
1 BEFORE PROCEEDING

WARNING: Read all the instructions before proceeding. We recommend calling a professional if you are uncertain about installing this product! This product should be installed in accordance with all local and state plumbing and building code requirements.



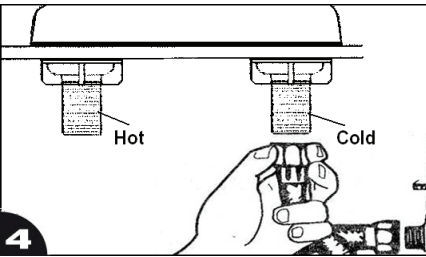
2 SHUT OFF WATER SUPPLY

Locate the water supply inlets and shut off both the hot and cold water supply valves. If you are replacing an existing faucet, remove the old faucet. Clean the sink surface thoroughly in preparation for the new faucet.



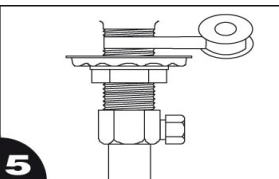
3 SECURE NEW FAUCET

Position the faucet on the sink. If the sink surface is uneven, a small amount of silicone sealant may be applied under the gasket. Screw locknuts onto faucet shanks and hand tighten.



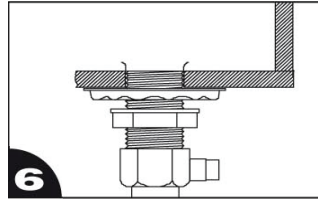
4 CONNECT WATER SUPPLY

Connect hot and cold water supplies and turn on the supply valves. Check all connections for leak. Retighten connections if necessary, but be careful not to over tighten. **For model without Pop-up, please skip to Step #10.**



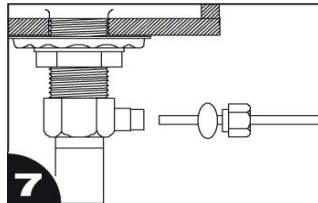
5 PREPARE POP-UP

Thread mounting nut and bottom gasket onto drain body. Wrap top threaded end of the drain body with teflon tape.



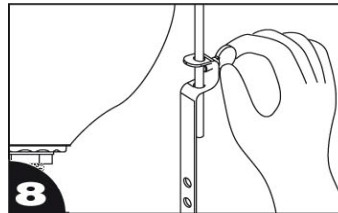
6 SECURE POP-UP TO SINK

Insert drain body through the drain opening from under the sink. Screw seat onto drain body. Tighten the mounting nut.



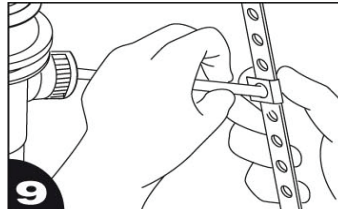
7 INSTALL PIVOT ROD

Install pivot rod as shown with pivot hole facing the back of the sink. Tighten firmly, be careful not to over tighten



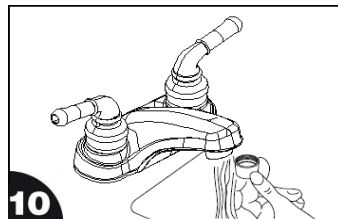
8 INSTALL LIFT ROD

Put lift rod through lift rod hole on faucet and through lift rod strap.



9 CONNECT STRAP

Guide the pivot rod through the lift rod strap and secure with the spring clip. Adjust the length of lift rod and secure set screw on lift rod strap.



10 FLUSH WATER LINES

Remove the aerator from the spout tip. Turn the handle to the full on position. Run water for one minute. Repeat in hot and cold sides to remove debris that may have collected in the water lines. Reinstall the aerator.

Your new faucet is now ready to use!