



ENGLISH

# 275 Touchscreen Electronic Deadbolt

Installation and User Guide

**Required tools**

4 AA Batteries   Ruler   Phillips screwdriver

**Additional Tools (depending on application)**

Hammer   Wood block   Pliers

**Kwikset  
Technical Support**

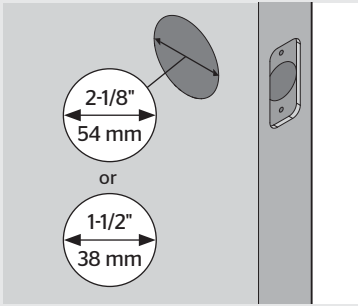
1-800-327-5625  
www.kwikset.com

Parts in the box			
Latch 	Drive-In Collar 	Strike 	Cylinder 
Exterior Assembly 	Keys 	Mounting Plate 	Interior Assembly 
Interior Cover 	Latch and Strike Screws 	Interior Assembly Screws 	Mounting Plate Screws 

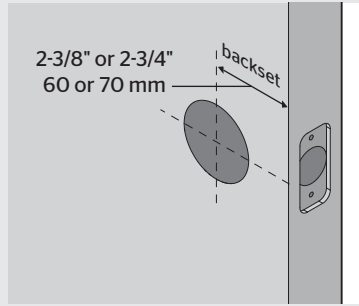
## 1 Prepare the door and check dimensions

If drilling a new door, use the supplied template and the complete door drilling instructions available at [www.kwikset.com/doorprep](http://www.kwikset.com/doorprep)

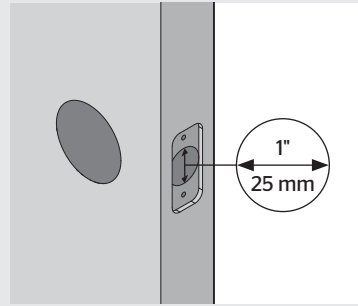
**A** Measure to confirm that the hole in the door is either 2-1/8" (54 mm) or 1-1/2" (38 mm).



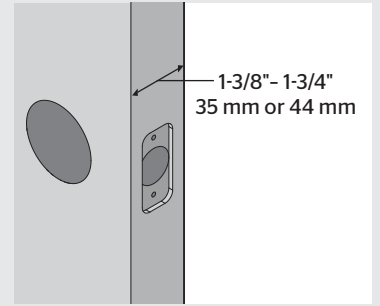
**B** Measure to confirm that the backset is either 2-3/8" or 2-3/4" (60 or 70 mm).



**C** Measure to confirm that the hole in the door edge is 1" (25 mm).



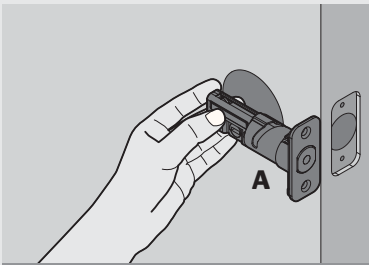
**D** Measure to confirm that the door is either 1-3/8" or 1-3/4" (35 mm or 44 mm) thick.



Note: Additional door preparation may be required for doors with 1-1/2" (38 mm) holes. Consult the deadbolt drilling instructions at [www.kwikset.com/doorprep](http://www.kwikset.com/doorprep)

## 2 Install the latch and strike

**A** Hold the latch in front of the door hole, with the latch face flush against the door edge.



**B** Is the door edge chiseled?

<b>YES</b>	<b>NO</b>
Install latch in door with supplied screws.	Remove rectangular face from latch and install drive-in collar.

**C** Install strike on the door frame.

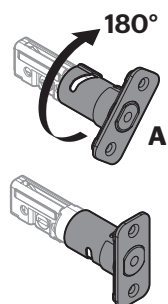
⚠ Make sure hole in door frame is drilled a minimum of 1" (25 mm) deep.

Is the slotted hole centered in the door hole?

<b>YES</b>	<b>NO</b>
slotted hole is centered	slotted hole is NOT centered

No adjustment is required. Proceed to next step.

Rotate latch face as shown to extend latch.



Make sure slotted hole is at bottom of latch.

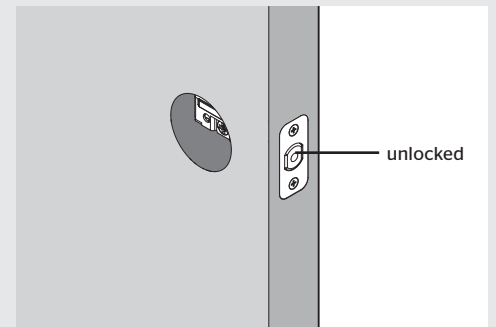
Align tabs with holes in collar.

Ensure collar snaps into place. Pull collar to test for tight fit.

Install latch in door with wood block and hammer.

Make sure slotted hole is at bottom of latch.

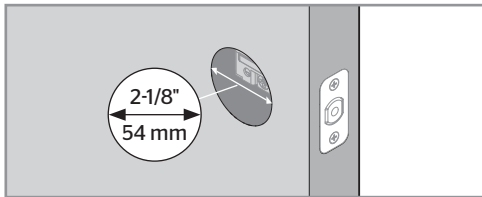
**D** Make sure the latch bolt is fully retracted (in the unlocked position).



### 3 Prepare keypad and mounting plate (only for doors with smaller holes)

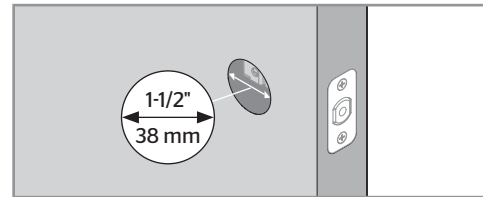
What is the diameter of the hole in the door?

Diameter is 2-1/8" (54 mm)



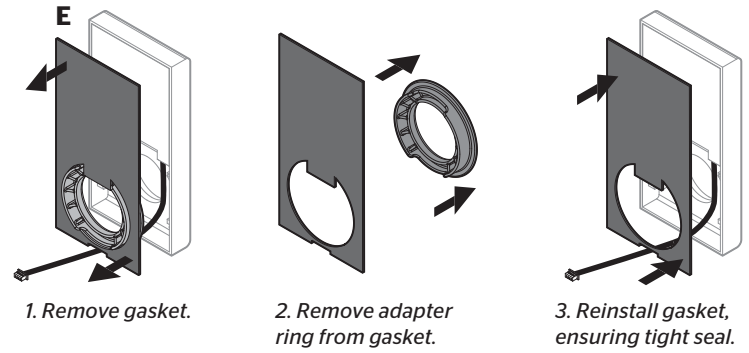
or

Diameter is 1-1/2" (38 mm)

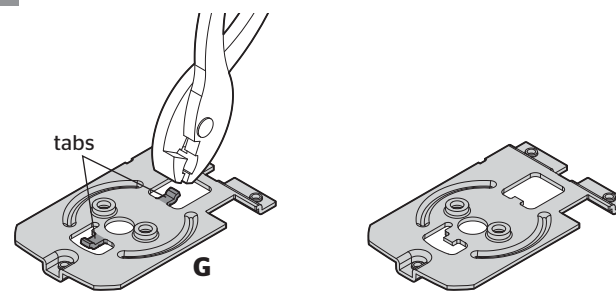


No adjustment is required.  
Proceed to step 4.

**A** Remove adapter ring from exterior assembly:

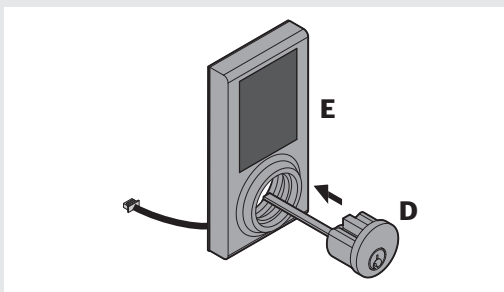


**B** Use pliers to remove two tabs from mounting plate:

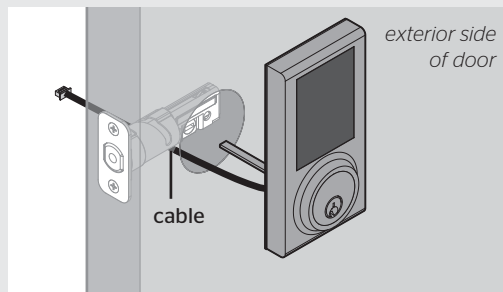


### 4 Install exterior assembly

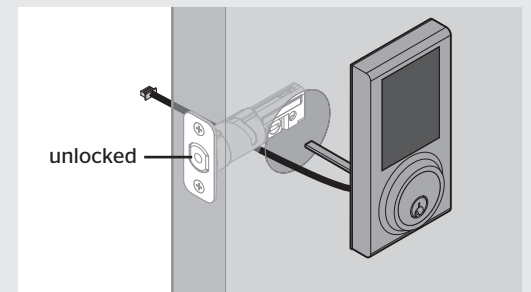
**A** Install the cylinder into the exterior assembly.



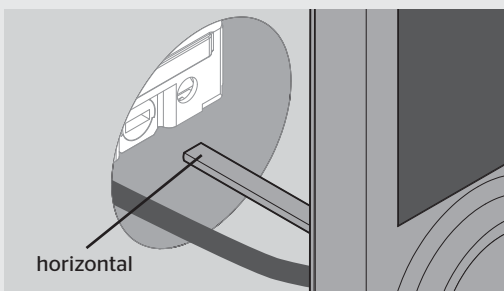
**B** Route the cable below the latch.



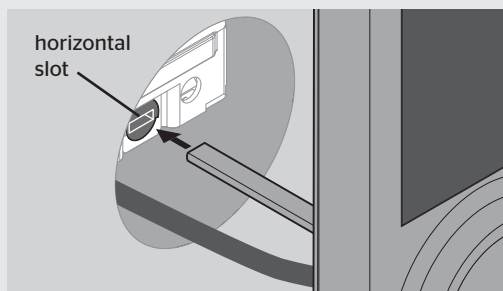
**C** **IMPORTANT:** Make sure the latch is fully retracted (in the unlocked position).



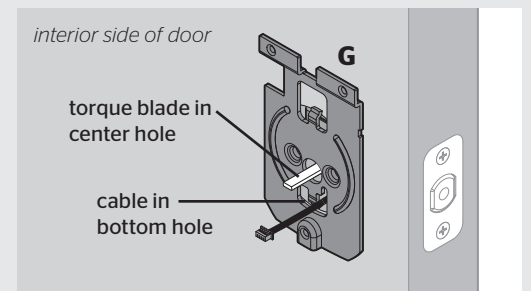
**D** **IMPORTANT:** Make sure the torque blade is in the horizontal position.



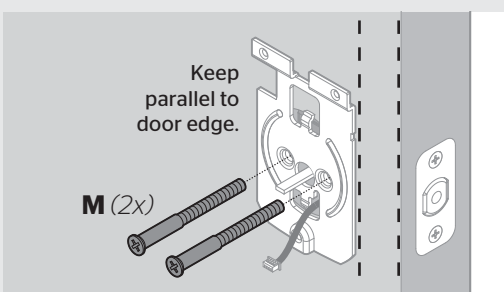
**E** Insert the torque blade through the horizontal slot in the latch.



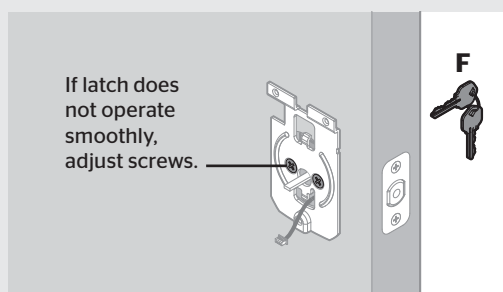
**F** Push the torque blade through the center hole in the mounting plate and send the cable through the bottom hole.



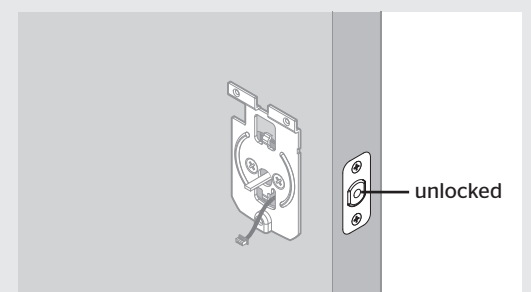
**G** Secure the mounting plate with the supplied screws.



**H** Insert the key and test the latch for smooth operation.

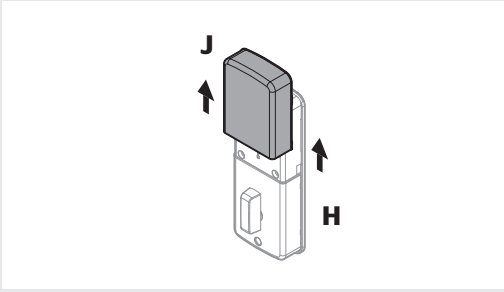


**I** Remove the key and make sure the latch bolt is still in the unlocked position.

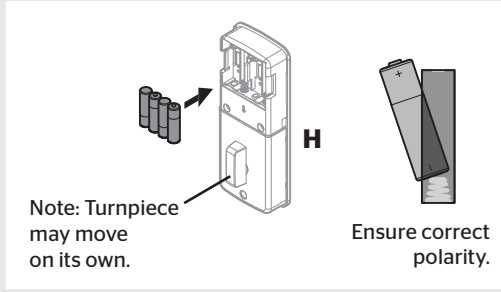


## 5 Install interior assembly

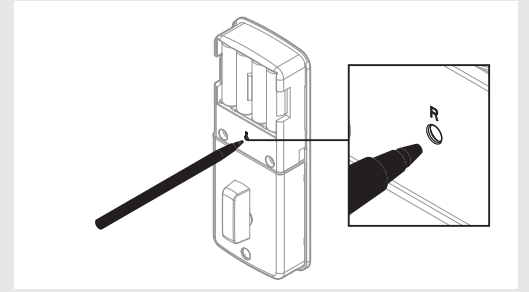
**A** Remove the battery cover.



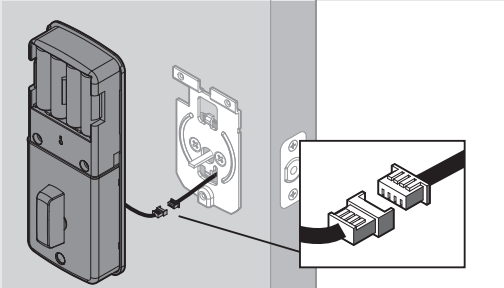
**B** Load 4 AA batteries into the interior assembly. For best results, use new, non-rechargeable Alkaline batteries only.



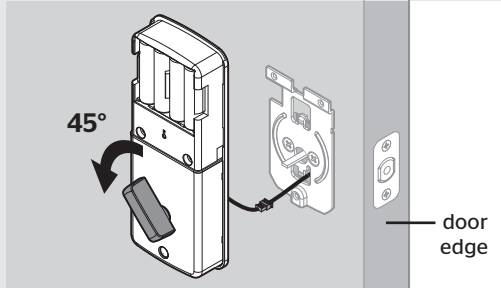
**C** Press and hold the Reset button on the interior assembly for 5 seconds, until you hear 3 long beeps.



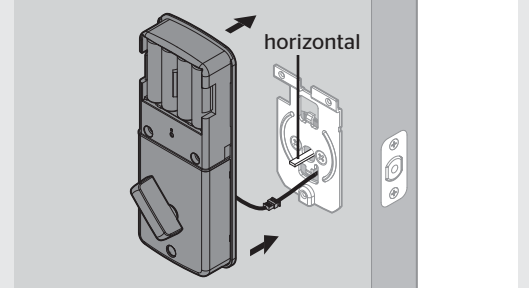
**D** Align the colored edges of the connectors and ensure a tight cable connection.



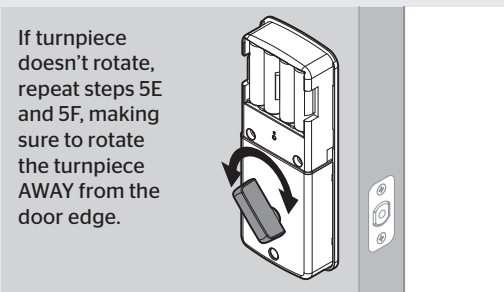
**E** **IMPORTANT:** Rotate the turnpiece **AWAY** from the door edge.



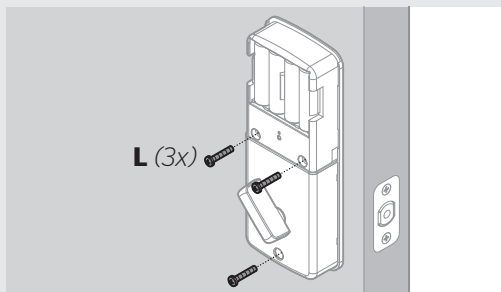
**F** Make sure the torque blade is still in the horizontal position and install the interior assembly.



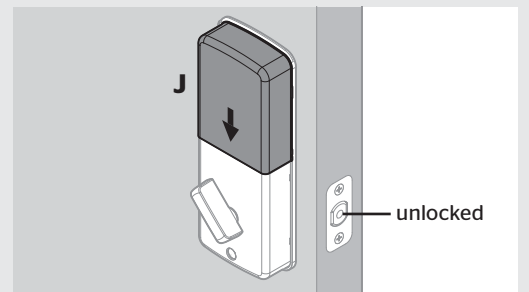
**G** Test the turnpiece for smooth rotation.



**H** Secure the interior assembly with the supplied screws.



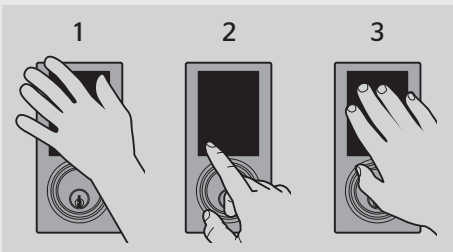
**I** Reinstall battery cover and make sure the latch is still in the unlocked position.



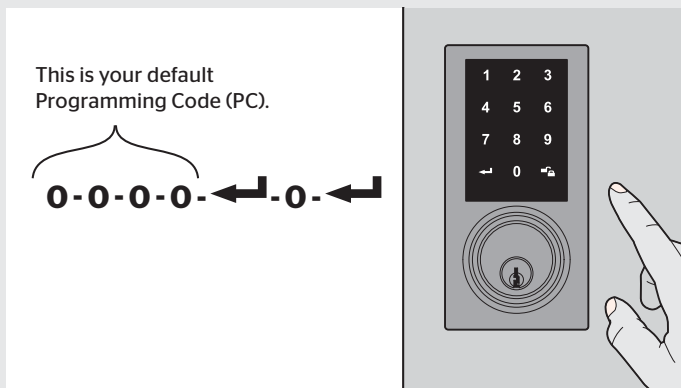
## 6 Enter door handing code and test lock

**A** How to activate the screen:

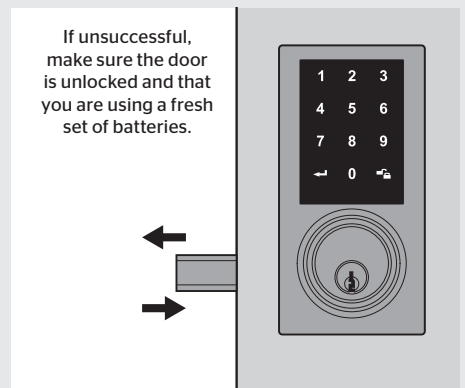
1. Touch screen with palm or back of hand until digits illuminate.
2. Touch lower left area of screen (where ← symbol is located) until digits illuminate.
3. Touch screen with three or more fingers until digits illuminate.



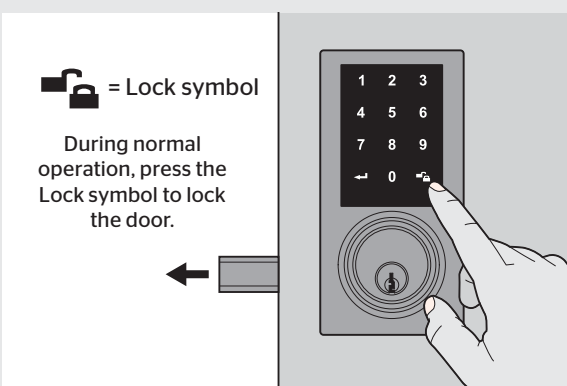
**B** While the door is OPEN and UNLOCKED, activate the screen. Enter the following code to teach the lock the orientation of the door:



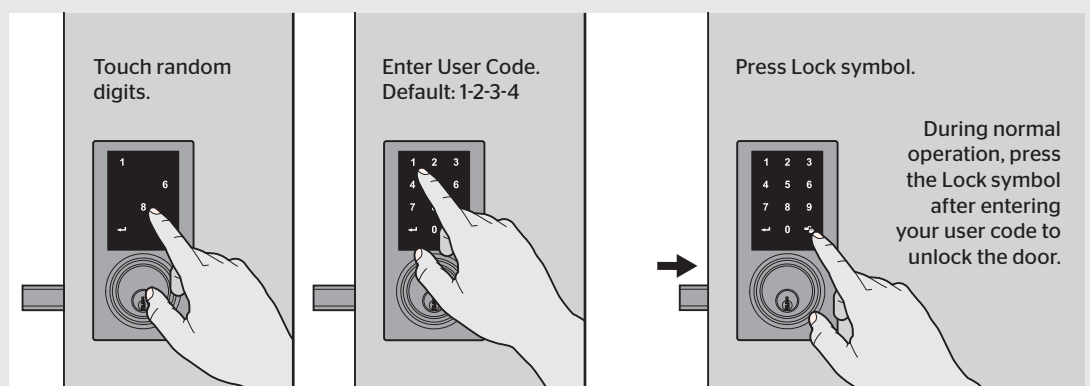
**C** The latch bolt will extend and retract. If successful, you will hear 2 beeps. If unsuccessful, you will hear 3 beeps.



**D** If successful, activate the screen. Press the Lock symbol. The latch bolt will extend to lock.



**E** Activate the screen. Touch the random digits that appear (this is a security feature that ensures fingerprints are spread around the entire screen). Enter the default User Code (1-2-3-4), then press the Lock symbol. The door will unlock.



**IMPORTANT:** It is recommended that you replace the default Programming Code and default User Code with codes of your own. See page 4.

## Programming

**IMPORTANT:** Before any programming sequence, make sure that your door is open and unlocked.


For all programming sequences below, success is indicated by 2 beeps. If unsuccessful, you will hear 3 beeps.




Note: If the lock is muted, you will not hear the lock beeping.

Move swiftly during programming. If no digit is pressed for 10 seconds, the touchscreen will turn off and you will need to restart the procedure.

### How to change your Programming Code




The Programming Code (PC) will not unlock your door. It is an added security feature that is used to set up all functions.

 The default PC is 0-0-0-0. It is recommended that you change it to a code of your own.


1. Enter your existing PC, then press .
2. Press **4** - .
3. Enter a new PC. It must be between 4 and 10 digits.
4. Press .




### How to add User Codes

A total of 6 User Codes (and a temporary one-time User Code) may be programmed. Do not program a User Code that is the same as your PC.

1. Enter your existing PC, then press .
2. Press **1** - .
3. Enter a new User Code. It must be between 4 and 10 digits.
4. Press .
5. Test the code: While your door is open, lock it. Enter your new User Code, then press the Lock symbol. The door should unlock.




### How to delete individual User Codes

 The lock is pre-programmed with a default User Code of 1-2-3-4. It is recommended that you delete this code.

1. Enter your existing PC, then press .
2. Press **2** - .
3. Enter the User Code you wish to delete.
4. Press .
5. Test the code: While your door is open, lock it. Enter the User Code, then press the Lock symbol. The door should not unlock.



### How to add a one-time User Code

A one-time user code may be used only once, and then it will be deleted immediately after use.

1. Enter your existing PC, then press .
2. Press **8** - .
3. Enter a new User Code. It must be between 4 and 10 digits.
4. Press .

### How to enable/disable User Codes

If User Codes are disabled (example: when you go on vacation), the lock can only be operated by the key and turnpiece until they are enabled again.

1. Enter your existing PC, then press .
2. Press **7** - .
3. Repeat steps 1 and 2 to enable or disable the codes again.



### How to delete all User Codes

If all User Codes are deleted, the lock can only be operated by the key and turnpiece until a new User Code is added.

1. Enter your existing PC, then press .
2. Press **3** - .




### How to enable/disable Auto-Lock

The Auto-Lock feature automatically re-locks your door 30 seconds after unlocking. This feature is off by default.

1. Enter your existing PC, then press .
2. Press **5** - .
3. Repeat steps 1 and 2 to enable or disable Auto-Lock again.

### How to change Auto-Lock time delay

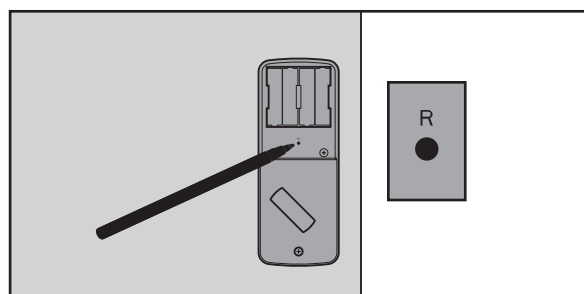
You can set the Auto-Lock time delay between 10 and 99 seconds.



1. Enter your existing PC, then press .
2. Press **6** - .
3. Enter time between 10 and 99 seconds.
4. Press .

### How to restore default settings

This procedure will delete all User Codes associated with the lock, and the default PC and User Code will be restored.

1. Make sure the door is open and unlocked. Press and hold the Reset button for 5 seconds, until you hear 3 long beeps.



2. Enter the default PC (0-0-0-0), then press .
3. Press **0** - .
4. The latch bolt will extend and retract to learn the orientation of the door. If successful, you will hear 2 beeps. If unsuccessful, you will hear 3 beeps (make sure the door is open and unlocked and that you are using a fresh set of batteries).
5. Test the lock: Activate the screen. With the door open and unlocked, press the Lock symbol. Make sure it locks the door.
6. Test the default User Code: Activate the screen. Touch the random digits that appear. Enter the default User Code (1-2-3-4), then press the Lock symbol. Make sure it unlocks the door.

### System Alerts

Sound	Lights	Meaning
1 beep		Successful operation.
2 beeps		Successful programming.
3 beeps		Operation error.
5 beeps	X-pattern (1-3-5-7-9) flashes.	5 incorrect code entered within one minute. Re-enter User Code after 45-second touchscreen lockout.
10 rapid beeps		Low battery.
3 long beeps		Default settings restored.
	Lock button flashes slowly.	Lock is in programming mode.

### Regulatory Compliance

This product complies with standards established by the following regulatory bodies:

- Federal Communications Commission (FCC)
- Industry Canada

#### FCC

This device complies with Part 15 of the FCC Rules. Operation is subject to the following two conditions:

- (1) this device may not cause harmful interference, and
- (2) this device must accept any interference received, including interference that may cause undesired operation.

This equipment has been tested and found to comply with the limits for a Class B digital device, pursuant to Part 15 of the FCC Rules. These limits are designed to provide reasonable protection against harmful interference in a residential installation. This equipment generates, uses, and can radiate radio frequency energy and, if not installed and used in accordance with the instructions, may cause harmful interference to radio communications. However, there is no guarantee that interference will not occur in a particular installation. If this equipment does cause harmful interference to radio or television reception, which can be determined by turning the equipment off and on, the user is encouraged to try to correct the interference by one or more of the following measures:

- Reorient or relocate the receiving antenna.
- Increase the separation between the equipment and receiver.
- Connect the equipment into an outlet on a circuit different from that to which the receiver is connected.
- Consult the dealer or an experienced radio/TV technician for help.

**IMPORTANT!** Changes or modifications not expressly approved by the manufacturer could void the user's authority to operate the equipment.

#### Industry Canada

This device complies with Industry Canada licence-exempt RSS standard(s). Operation is subject to the following two conditions: (1) this device may not cause interference, and (2) this device must accept any interference, including interference that may cause undesired operation of the device.

### Troubleshooting

#### The turnpiece cannot rotate or operate the lock.

Remove and reinstall the lock, making sure that the tailpiece is horizontal in steps 4 and 5.


#### The lock cannot be locked or unlocked by the touchscreen.

Make sure the lock is programmed with at least one User Code and that the User Codes are not disabled. If needed, restore the lock's default settings.

#### The touchscreen doesn't respond when touched.

Make sure the cables are properly connected, and make sure the batteries are new and installed correctly.

#### After the lock has been working normally, the latch bolt locks up and the turnpiece will not rotate.

Enter your PC, then press .

Press **0** - .

The latch bolt will extend and retract to learn the orientation of the door. If successful, you will hear 2 beeps. If unsuccessful, you will hear 3 beeps (make sure the door is open and unlocked and that you are using a fresh set of batteries).

#### The door can be locked with the Lock symbol, but the User Code will not unlock the door.

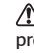
Make sure the User Code is correct and that the Lock symbol is pushed after entering the User Code. If the door still won't unlock, use a key to unlock the door. Call technical support for further troubleshooting.

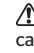
#### When the door is closed and the Lock symbol is pressed to lock the door, the lock beeps 3 times. When the door is open and the Lock symbol is pressed to lock the door, the lock doesn't beep.

Make sure that the hole in the door frame behind the strike is drilled at least 1 inch (25 mm) deep. Also make sure the strike plate is aligned with the latch bolt. If needed, reposition the strike.

### Important Safeguards

1. Read all instructions in their entirety.
2. Familiarize yourself with all warning and caution statements.
3. Remind all family members of safety precautions.
4. Restrict access to your lock's interior assembly and routinely check your settings to ensure they have not been altered without your knowledge.
5. Protect your User Codes and Programming Code.
6. Dispose of used batteries according to local laws and regulations.

 **CAUTION:** Prevent unauthorized entry. This lock has a pre-set User Code and Programming Code. Upon installation and set-up, replace both of these codes with your own. Since anyone with access to the interior assembly can reset the lock and change the User Codes, you must restrict access to the interior assembly and routinely check the User Codes to ensure they have not been altered without your knowledge.

 **WARNING:** This Manufacturer advises that no lock can provide complete security by itself. This lock may be defeated by forcible or technical means, or evaded by entry elsewhere on the property. No lock can substitute for caution, awareness of your environment, and common sense. Builder's hardware is available in multiple performance grades to suit the application. In order to enhance security and reduce risk, you should consult a qualified locksmith or other security professional.