



INSTRUCTIONS

⚠️ **WARNING: READ AND UNDERSTAND ALL INSTRUCTIONS.**

Failure to follow all instructions listed below, may result in electric shock, fire and/or serious personal injury.

⚠️ **WARNING:** ELECTRIC PRODUCT. Keep away from children. Not recommended for children under 3 years of age. As with all electrical products, precautions should be observed during handling and use to reduce the risk of electric shock. If the supply cord is damaged, it must be replaced by the manufacturer, its service agent or similarly qualified persons in order to avoid a hazard. To avoid the risk of electrical shock, always make sure the figure is unplugged from the electrical outlet before assembling, disassembling, or relocating.

⚠️ **WARNING:** This product is to be assembled by adults only.

IMPORTANT SAFETY INSTRUCTIONS WHEN USING ELECTRICAL PRODUCTS, BASIC PRECAUTIONS SHOULD ALWAYS BE FOLLOWED, INCLUDING THE FOLLOWING:

READ AND FOLLOW ALL SAFETY INSTRUCTIONS

1. This is an electrical product - not a toy! To avoid risk of fire, burns, personal injury, and electric shock, it should not be played with or placed where small children can reach it.
2. Do not use seasonal products outdoors unless marked suitable for indoor and outdoor use. When products are used in outdoor applications, connect the product to a Ground Fault Circuit Interrupting (GFCI) outlet. If one is not provided, contact a qualified electrician for proper installation.
3. This seasonal use product is not intended for permanent installation or use.
4. Do not mount or place near gas or electric heaters, fireplaces, candles, or other similar sources of heat.
5. Do not secure product wiring with staples or nails or place on sharp hooks or nails.
6. Do not let lamps rest on the supply cord or on any wire.
7. Unplug the product when leaving the house, when retiring for the night, or if left unattended.
8. Do not use this product for other than its intended purpose.
9. Do not hang ornaments or other objects from cord, wire, or light string.
10. Do not close doors or windows on the product, or extension cords, as this may damage the wire insulation.
11. Do not cover the product with a cloth, paper, or any material not part of the product when in use.
12. Do not place the product against carpeting, furniture, or any other fabric when in use.
13. This product has a polarized plug (one blade is wider than the other) as a feature to reduce the risk of electric shock. This plug will fit in a polarized outlet only one way. If the plug does not fit fully in the outlet, reverse the plug. If the plug still does not fit, contact a qualified electrician. Do not use an extension cord unless the plug can be fully inserted. Do not alter or replace the plug.
14. This product employs overload protection (fuse). A blown fuse indicates an overload or a short-circuit condition. If the fuse blows, unplug the product from the outlet. Also unplug any additional string or products that may be attached to the product. Replace the fuse as per the user servicing instructions (follow product markings for proper fuse rating) and check the product. If replacement fuse blows, a short-circuit may be present and the product should be discarded.
15. Read and follow all instructions that are on the product or provided with the product.

SAVE THESE INSTRUCTIONS

USE AND CARE INSTRUCTIONS

1. When the product is placed on a live tree, the tree should be well maintained and fresh. Do not place on live trees in which the needles are brown or break off easily. Keep the tree holder filled with water.
2. If the product is placed on a tree, the tree should be well secured and stable.
3. Before using and reusing, inspect the product carefully. Discard any products that have cut, damaged or frayed wire insulation cords, cracks, lamp holders or enclosures, loose connections, or exposed copper wire.
4. When storing the product, carefully remove the product from wherever it is placed, including trees, branches, or bushes, to avoid any undue strain or stress on the product conductors, connections and wires.
5. When not in use, store neatly in a cool, dry location protected from sunlight.

Congratulations! You're the proud owner of a Gemmy Airblown® Inflatable. Please read over the directions carefully before using your Gemmy Airblown® Inflatable.

CONTENTS

Airblown® Inflatable Unit	1 piece
Base Stakes	4 pieces
Tether Stakes	4 pieces
Nylon Tethers	4 pieces
Extra C-7 Light Bulb	1 piece
5 Amp, 125V Fuse	1 piece

GENERAL INSTRUCTIONS

1. Remove contents from packaging. Lay out deflated Airblown® Inflatable in a clear area.
2. Locate four clips on the bottom of the fabric and attach to the plastic legs (See illustration 1).

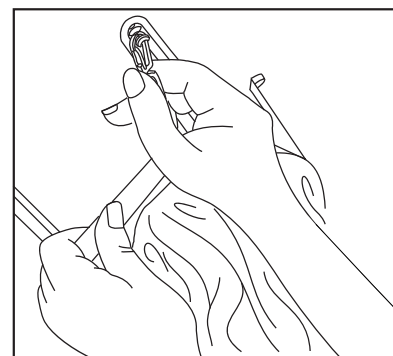


illustration 1

3. Turn unit upright. Make sure the air intake is clear of fabric or other obstruction and zipper is fully closed.
4. Insert the base stakes through the plastic legs into the ground (See illustration 2).

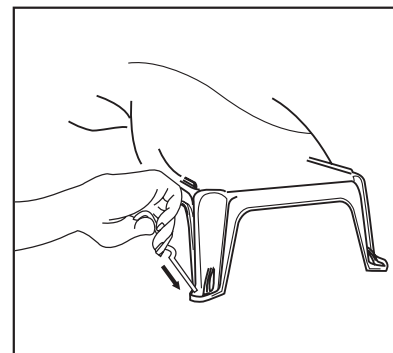


illustration 2

5. Plug into receptacle or other outlet device to inflate your Airblown® Inflatable.
6. Once fully inflated, clip the tethers to each of the nylon loops on the side of the Airblown® Inflatable (See illustration 3).

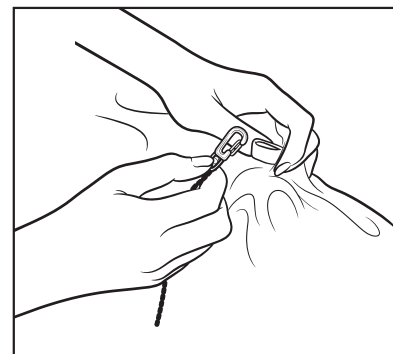


illustration 3

7. Insert the tether stakes into the ground and attach the tethers(See illustration 4).
8. To deflate, unplug fan. For faster deflation, unzip zipper after unplugging fan.
Do not unplug by pulling on cord.

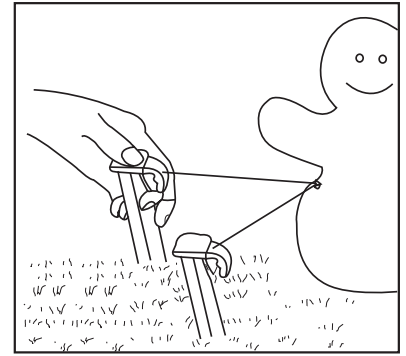


illustration 4

USER SERVICING INSTRUCTIONS

Lamp Replacement

Disconnect the plug from the electrical outlet and allow the lamp to cool completely before replacing bulb. Do not touch the bulb when the power is "ON" as it is extremely hot and may cause electrocution.

1. Grasp plug and remove from receptacle or other outlet device. Do not unplug by pulling on the cord.
2. Open the zipper opening on the Airblown® Inflatable.
3. Open the protective light cover carefully by pressing down on the two locking side tabs simultaneously.
4. Replace lamp with same type 7W maximum, candelabra base, UL classified.
5. Do not over-tighten the lamp as this may damage the lamp or lamp holder.

Replace only with same type C7, 7 Watt Max Candelabra-base 120 Volt UL Classified lamps.

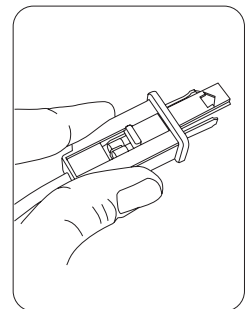
CAUTION

Fuse Replacement

WARNING: Risk of Fire: Replace only with same size and type of fuse.

WARNING: Risk of Fire: Do not replace the attachment plug. Contains a safety device (fuse) that should not be removed. Discard product if attachment plug is damaged.

1. Grasp plug and remove from the receptacle or other outlet device. Do not unplug by pulling on the cord.
2. Open fuse cover. Slide open the fuse access cover on top of the attachment plug towards blades. (See illustration)
3. Remove fuse carefully.
4. Replace fuse only with 5 Amp Max, 125 Volt (provided with product).
5. Close the fuse cover. Slide closed the fuse access cover on top of the attachment plug.



CAUTION

To reduce the risk of fire do not deliberately reposition either lamp holder contact.

Do not attempt to inflate your Airblown® Inflatable during unusually strong winds. If it becomes too windy for safe operation, simply allow your Airblown® Inflatable to deflate and wait for better conditions before re-inflating.

Protect the electric fan and power cord from direct exposure to water. This precaution will reduce the risk of electrical shock. When the temperature is below 14° F (-10° C), the motor may temporarily stop running. The motor will begin functioning again at higher temperatures.

WARNING

Remove all plastic fasteners and tags. These are part of the packaging and should be discarded.

This item is not a toy and should be used for decorative purposes only.

For indoor and outdoor use.

120 V 60 Hz.

TROUBLE SHOOTING CHECKLIST

If your Airblown® Inflatable is not inflating, the problem may be:

1. The power source is disabled or the cord may be unplugged.
2. Debris may be lodged in the motor.
3. The zipper may not be securely fastened, sealing the Airblown® Inflatable.
4. The temperature may be below 14° F (-10° C).

NOTE: ONCE FAN IS UNPLUGGED AND STOPS BLOWING, YOUR Airblown® Inflatable WILL DEFLATE.

FREQUENTLY ASKED QUESTIONS (FAQ's)

1. Can I continually run my Airblown® Inflatable?

Yes, you can run your Airblown® Inflatable during the day and at night. We recommend that you turn off your Airblown® Inflatable when leaving the immediate area and when retiring for the evening. Otherwise, your Airblown® Inflatable is designed to run continually as you see fit.

2. What happens if my Airblown® Inflatable becomes torn?

Rips in the Airblown® Inflatable can be sewn by hand (no special thread is required) or taped with clear packing tape.

3. How can I clean my Airblown® Inflatable?

Wipe clean with a damp cloth and allow to dry before storing away. Use mild detergent if necessary.

4. When I unplug my Airblown® Inflatable, it deflates. Why is this?

Your Airblown® Inflatable will not stay inflated unless it is plugged in and the fan is blowing air.

5. How much electricity does an Airblown® Inflatable consume?

It uses about as much energy as a standard string of holiday lights.

6. What is the best way to store my Airblown® Inflatable?

Store in a bag, box or other storage container and keep in a cool, dry location.

THESE INSTRUCTIONS ARE FOR THESE ITEMS

22146-B-C	23391-B-C	25663-B-C	26054-10	26649-B-C	27806-B-C	34538-B-C
50106-B-C	50399-B-C	50399-E	50603-B-C	60726	64669	61644-B-C
62451-B-C	62598-B-C	63284-B-C	63451-B-C	63673-B-C	63801-B-C	63983-B-C
63989-B-C	64022-B-C	64057-B-C	64059-E	64069-B-C	64079-E	64082-B-C
64103-B-C	64112-E	64123-B-C	64201-B-C	64276-B-C	64279-B-C	64281-B-C
64293-E	64320-B-C	64338-B-C	64350-B-C	64445-E	64514-E	64730-B-C
64731-E	64744-E	64824-B-C	64934-B-C	64935-B-C	64978-B-C	82776-E
83558-K3	84512-E	85215-E	85238-B-C	85238-B-C	85405-E	85425-E
85551-E	85735-E	85861-B-C	85930-B-C	85998-E	86051-E	86074-E
86159-B-C	86203-B-C	86221-K3	86240-E	86290-E	86365-B-C	86407-E
86509-E	86509-E	86907-B-C	86931-E	87147-B-C	87259-E	87435-B-C
87476-E	87488-E	87541-E	87542-B-C	87551-B-C	87567-B-C	87574-B-C
87578-E	87580-B-C	87604-B-C	87613-B-C	87636-E	87743-E	87744-E
87745-E	87781-B-C	87825-M3	87847-E	87849-E	87856-B-C	87915-B-C
87916-B-C	87923-E	87924-E	87926-B-C	87927-E	87929-B-C	87931-E
87943-E	88124-E	88244-K3	88297-E	88323-B-C	88325-B-C	88418-B-C
88451-E	88456-K3	88672-B-C	88672-B-C	88723-B-C	88859-E	88862-B-C
89106-B-C	89127-B-C	89316-E	89472-E	89473-E	87794-E	85646-B
85212-B	87929-B	89008-B	82766-E			



Visite WWW.GEMMY.COM para más información.

©2013 GEMMY INDUSTRIES CORP.

117 WRANGLER DRIVE. SUITE 100

COPPELL, TX 75019 U.S.A.

(972) 961-7000

HECHO EN CHINA / IMPRENTA EN CHINA