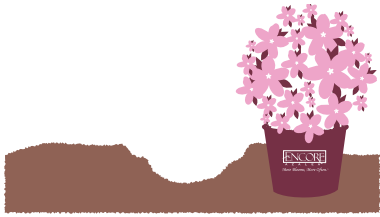


How To Plant Encore® Azaleas



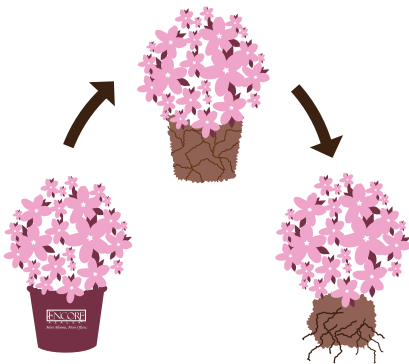
- 1 Turn the soil well and dig a hole twice as wide as it is deep.



- 2 Mix some organic material with some soil. Put a little bit of this mixture into the hole.



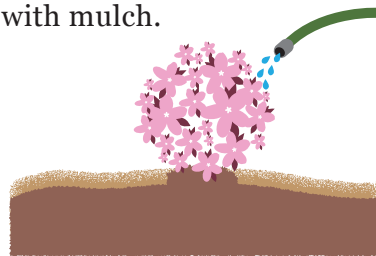
- 3 Remove the azalea from its container and loosen the root ball lightly with your fingers.



- 4 Set the plant into your prepared hole, making sure the top of the root ball is slightly above the soil level. Make sure the root ball is moist.



- 5 Pull the soil around the plant, water thoroughly and cover with mulch.



Key Features:

- **Encore Azaleas perform best in sun to high filtered shade. Four to six hours of sun or filtered shade per day will help guarantee optimal blooms.**
 - Dry, windy conditions and severe drought can impact performance, but once established, Encore Azaleas are tolerant of more intense stresses.
 - **Best in USDA Zones 6-9.** For zones 5-6, introduce in a sheltered location during spring.
- **Encore Azaleas will suffer or die if planted too deeply.** Plant them so that the top of the root ball is even with or slightly above the existing soil level.
 - **Spring planting** requires watering well. Keep soil moist until winter.
 - **Newly planted azaleas require routine watering the first year, but once established, do not require frequent watering.** Cover young azaleas in extreme conditions. Do not fertilize until after the last frost.
 - **Remember to water in times of drought.**
 - **Prune** the Encore Azaleas immediately after spring flowering.