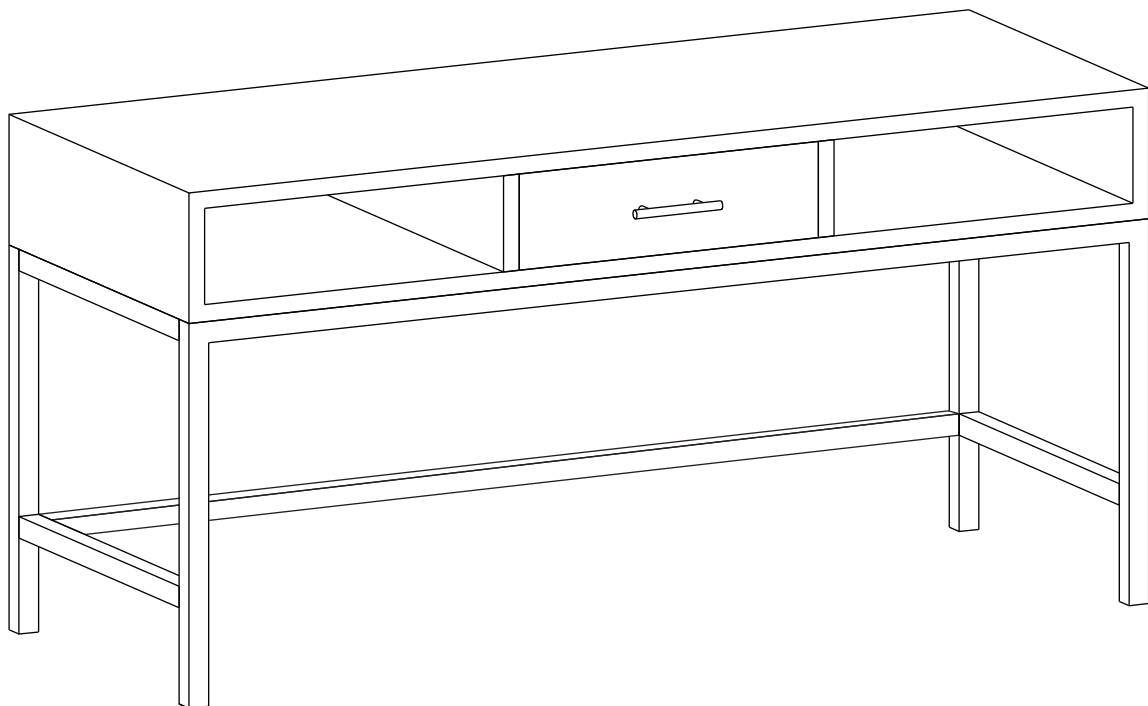
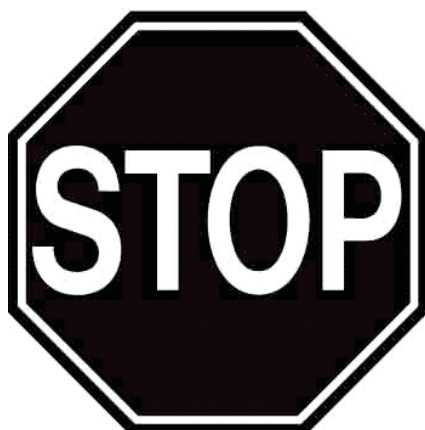


RIORDAN / COLBERT / BAILEY

CONSOLE TABLE

MODEL # 3AXCRDN-03





**FOR REPLACEMENT PARTS OR HELP WITH
ASSEMBLY PLEASE CONTACT US AT:**

simpli-home.com/customer-support

**PLEASE ENSURE TO HAVE THE MODEL #
FROM THE PACKAGING OR INSTRUCTION BOOKLET**

**TO RETURN THE PRODUCT:
PLEASE CONTACT THE RETAILER
WHERE THE ITEM WAS PURCHASED FROM**



**ENTER
TO WIN**

**Upload an image of our furniture
in your home with a short review
to our facebook page for a chance to**

**Win up to \$3000 of
Simpli Home furniture!!!**

www.facebook.com/simplihomefurnishings



IMPORTANT : Please read this manual carefully before beginning assembly of this product. Keep this manual for future reference.

SAFETY INFORMATION

Identify all the parts and hardware. Do not discard of the packaging until you have checked that you have all of the parts and hardware required. Hardware package may have spare parts.

WARNING: This item contains small parts which can be swallowed by children and pets. Keep children and pets away during assembly. To avoid danger of suffocation, always keep plastic bags away from children and pets. We recommend that you assemble this unit on a carpeted floor to avoid scratches. If using power tools, set the tool to low torque to avoid damage.

May require 2 people for ease of assembly.

CARE and MAINTENANCE

To clean, use a soft or slightly damp cloth, then wipe with a clean, dry cloth. Dust with soft dry cloth.

Do not use ammonia-based cleaning products, as they will damage the finish.

Do not leave liquids or damp cloths on this furniture.

To avoid dulling of the finish, do not place furniture in direct sunlight.

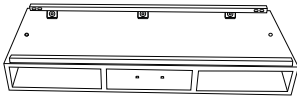
Please inspect and tighten all screws or bolts on a regular basis to ensure proper performance and safety of your item.

PRE-ASSEMBLY INFORMATION

MODEL # 3AXCRDN-03

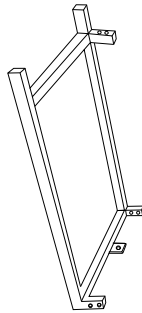
PARTS DESCRIPTION

A



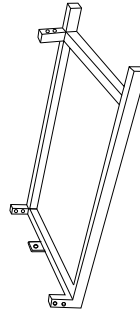
TOP
QTY 1

B



RIGHT LEG
QTY 1

C



LEFT LEG
QTY 1

D



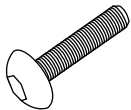
SUPPORT BAR
QTY 1

PRE- ASSEMBLY INFORMATION

MODEL # 3AXCRDN-03

HARDWARE DESCRIPTION

1



ALLEN KEY BOLT
M6 X 12 mm
QTY 12

2



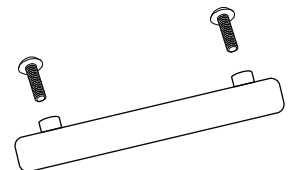
ALLEN KEY
QTY 1

3



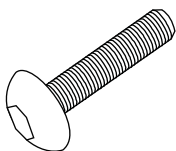
LOCK WASHER
QTY 14

4



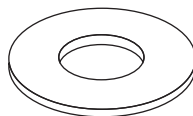
HANDLE
QTY 1 SET

5

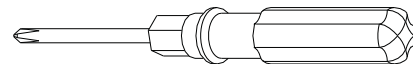


ALLEN KEY BOLT
M6 X 16 mm
QTY 2

6

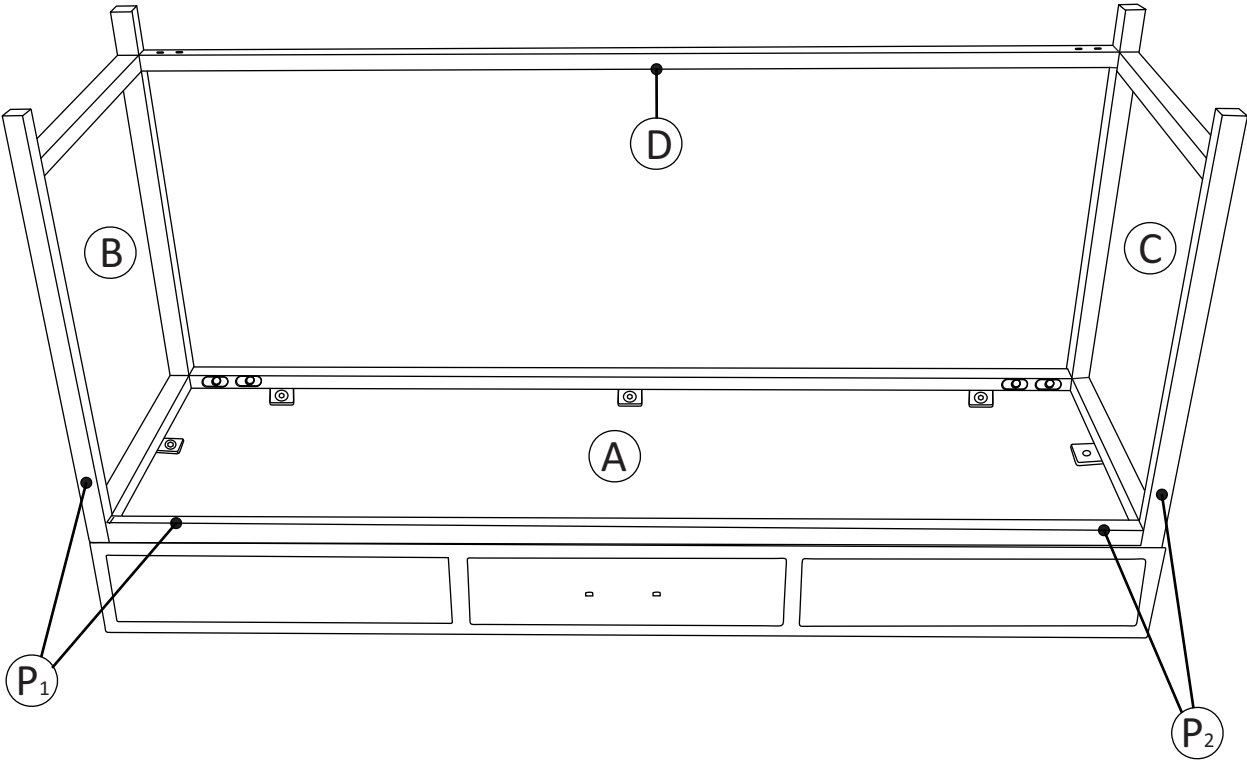


WASHER
QTY 2

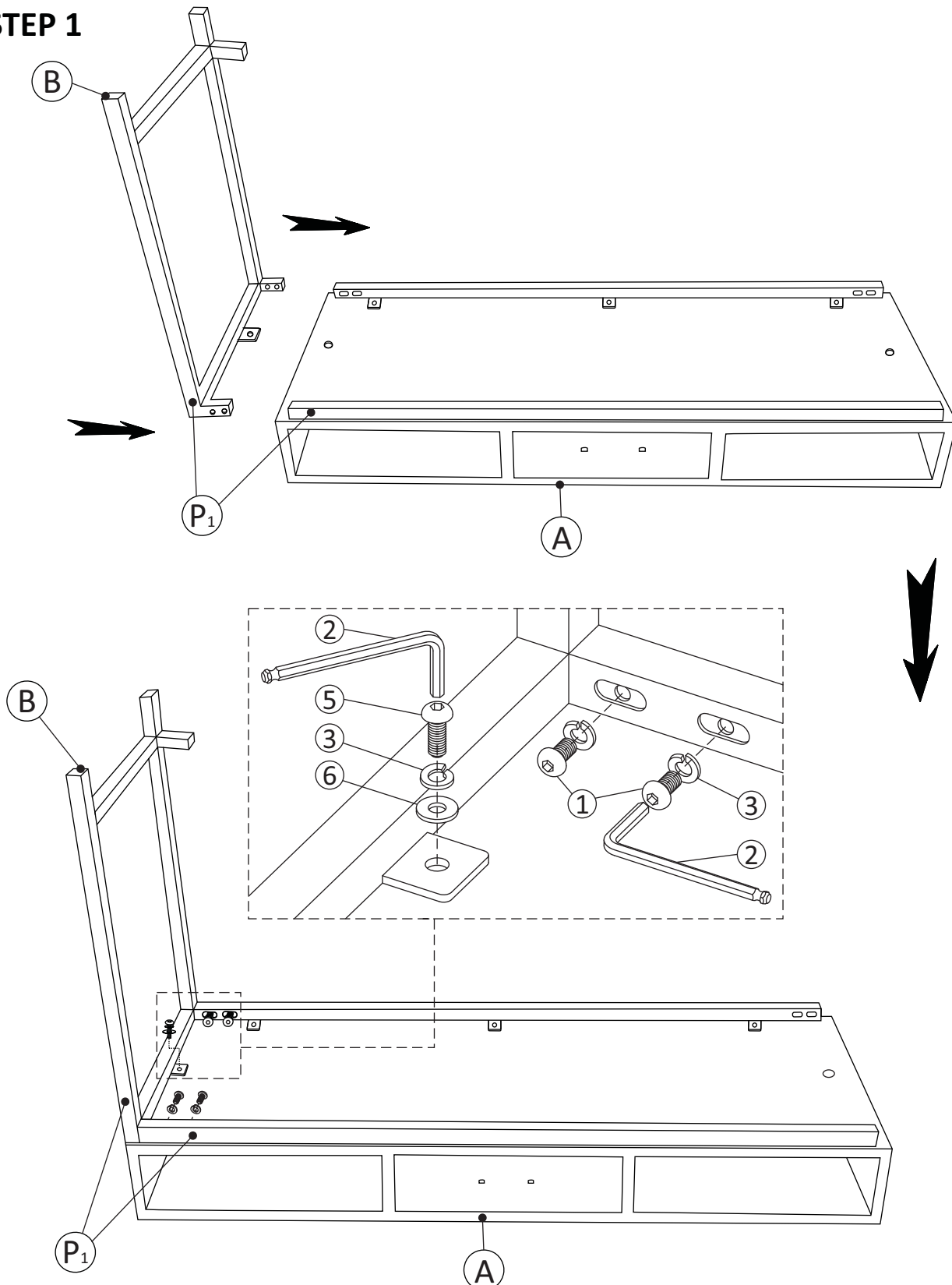


SCREWDRIVER
Not Included

NEED HELP? For help with assembly or if you are missing a part,
Please call customer service at 1-866-518-0120 ext. 262 (9 am to 4 pm EST)

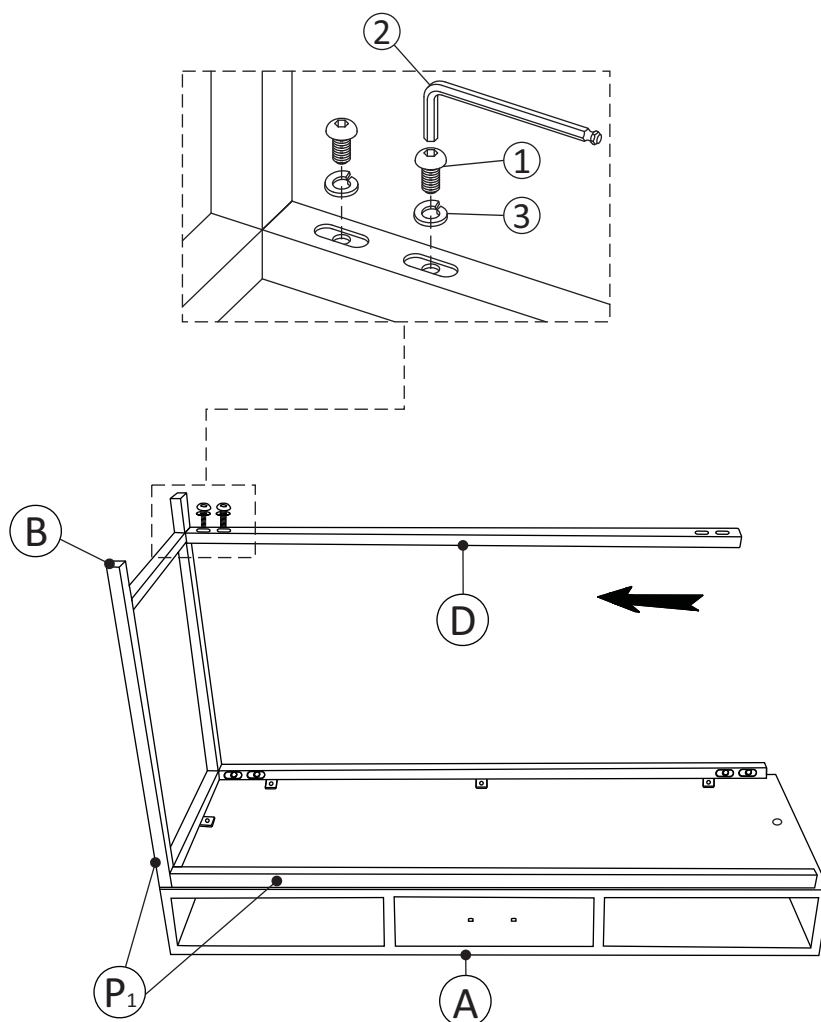


STEP 1



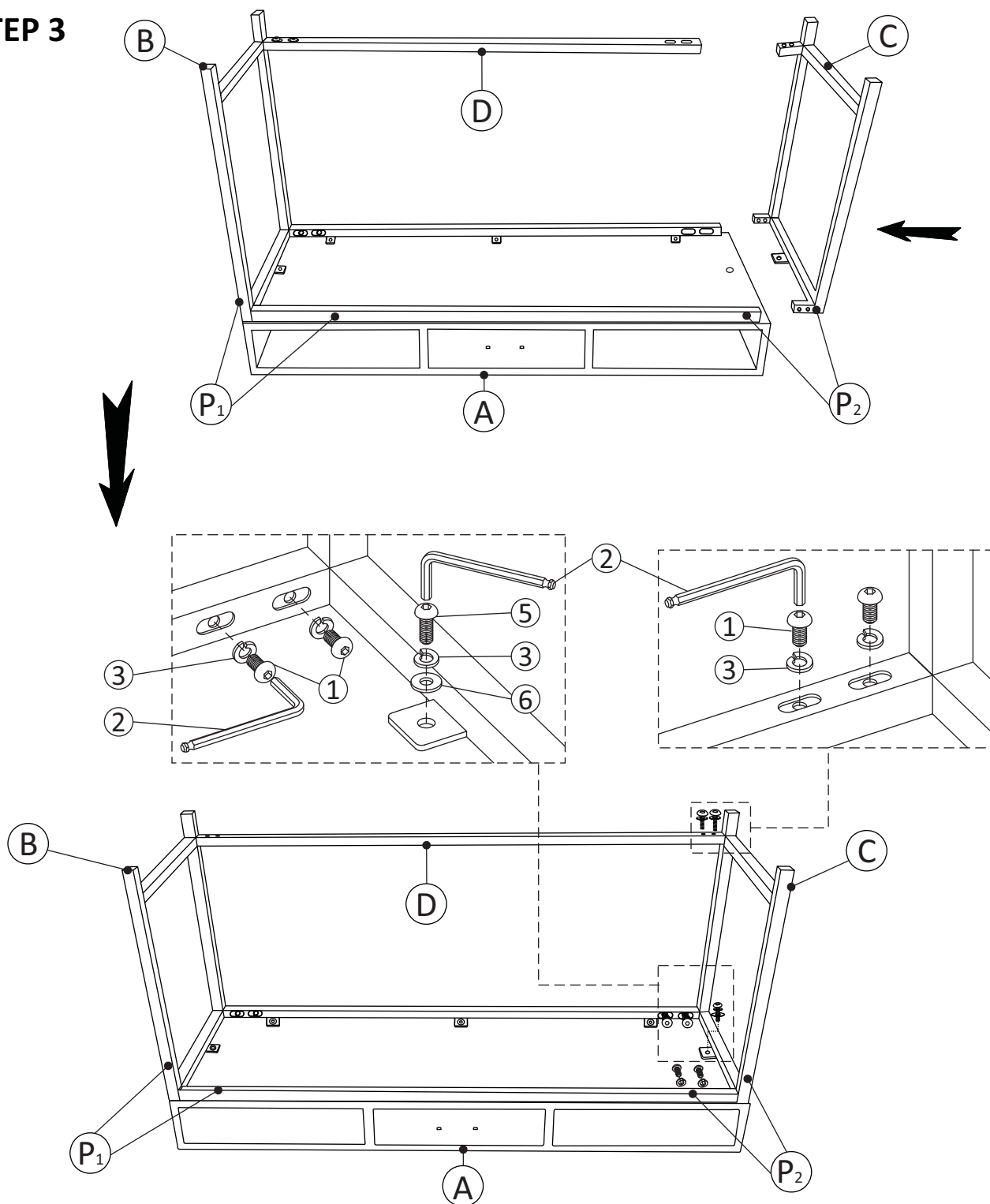
1. Align Right Leg (B) to Top (A) by matching the letters P1 to P1.
2. Use four Allen Key Bolts (1) and four Lock Washers (3) to attach Top (A) and Right Leg (B) (front and back of Leg).
3. Use one Allen Key Bolt (5), one Lock Washer (3) and 1 Washer (6) to secure Top (A) and Right Leg (B) (middle of Leg).
4. Use Allen Key (2) to tighten bolts. Do not over-tighten.

STEP 2



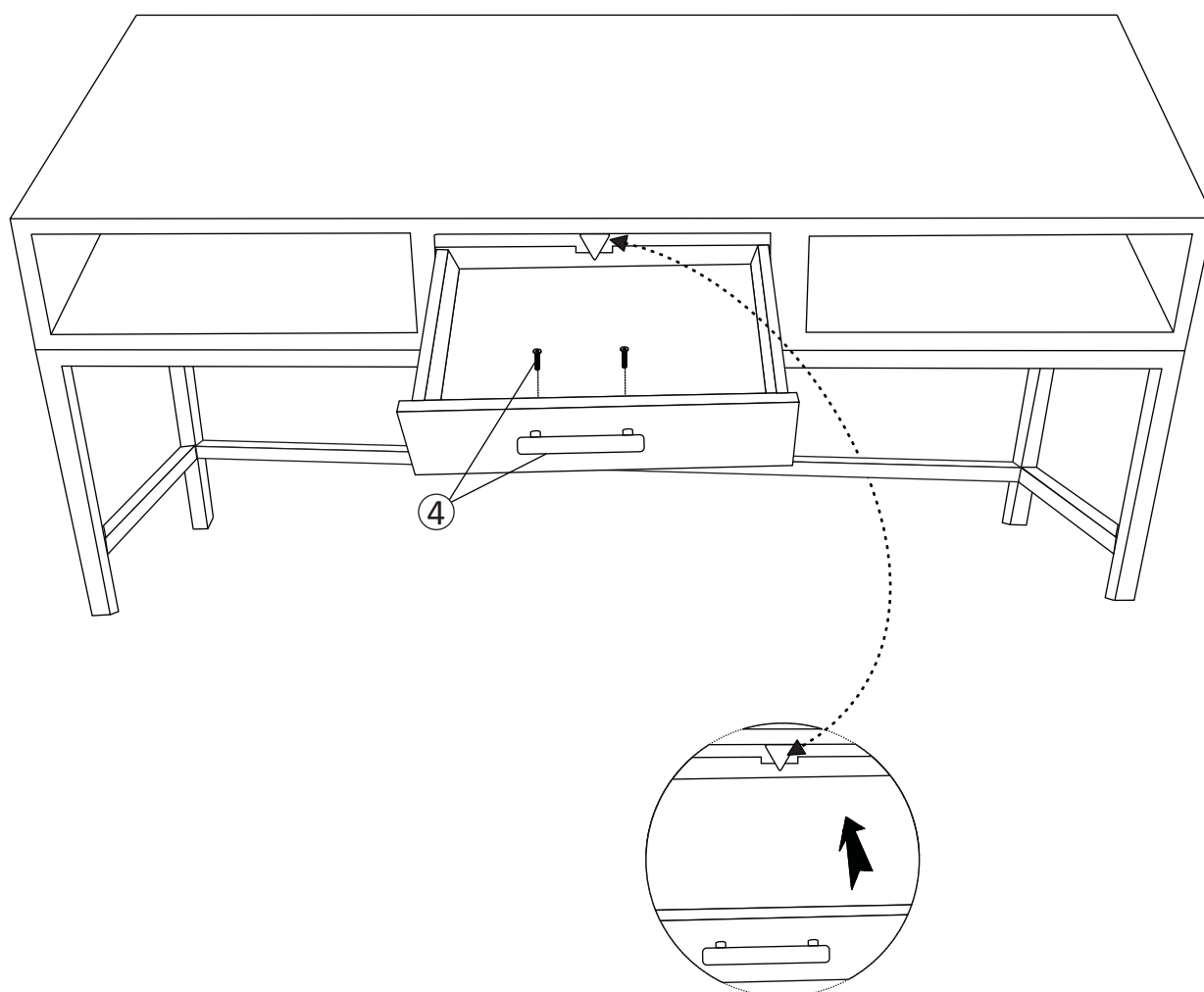
1. Attach Support Bar (D) to Right Leg (B) using two Allen Key Bolts (1) and two Lock Washers (3).
2. Use Allen Key (2) to tighten Allen Key Bolts (1). Do not over-tighten.

STEP 3



1. Attach Support Bar (D) to Left Leg (C) using two Allen Key Bolts (1) and two Lock Washers (3).
2. Align Left Leg (C) to Top (A) by matching the letters P2 to P2.
3. Use four Allen Key Bolts (1) and four Lock Washers (3) to attach Top (A) and Left Leg (C) (front and back of Leg).
4. Use one Allen Key Bolt (5), one Lock Washer (3) and one Washer (6) to secure Top (A) and Left Leg (C) (middle of Leg).
5. Use Allen Key (2) to tighten Allen Key Bolts. Do not over-tighten.

STEP 4



1. Attach Handles ④ to drawer on Top ①.
2. Use screwdriver to tighten screws. Do not over-tighten.
3. Open drawer half way and slide one hand inside to push the hook up (located underneath the top) and gently slide the drawer out using your other hand.



WARRANTY

Thank you for purchasing a **Simpli Home – Wyndenhall – Brooklyn + Max** product. These products have been made to demanding, high-quality standards and are guaranteed for domestic use against manufacturing faults for a period of 12 months from the date of purchase. This warranty does not affect your statutory rights.

In case of any malfunction of your product (failure, missing parts, etc.) please contact us at our toll free service line at 1-866-518-0120 ext. 262 from 9 am to 4 pm, Monday to Friday, Eastern Standard Time or by email at simpli-home.com/customer-support.

We reserve the right to repair or replace the defective product, at its discretion.

This product is guaranteed for 12 months if used for normal purposes. Any warranty is invalid if the product has been overloaded or subject to neglect, improper use or an attempted repair by other than an authorized agent. Heavy-duty or daily professional/commercial usage are not guaranteed.

Due to continuous product improvement, we reserve the right to change the product specifications without prior notice.



Question, problems, missing parts?

Before returning your product
please email Customer Support at
simpli-home.com/customer-support

or call

Customer Support at 1-866-518-0120 ext. 262
Monday to Friday between 9 am – 4 pm EST

For more information visit us on our website
www.simpli-home.com

Like us on facebook
www.facebook.com/simplihomefurnishings