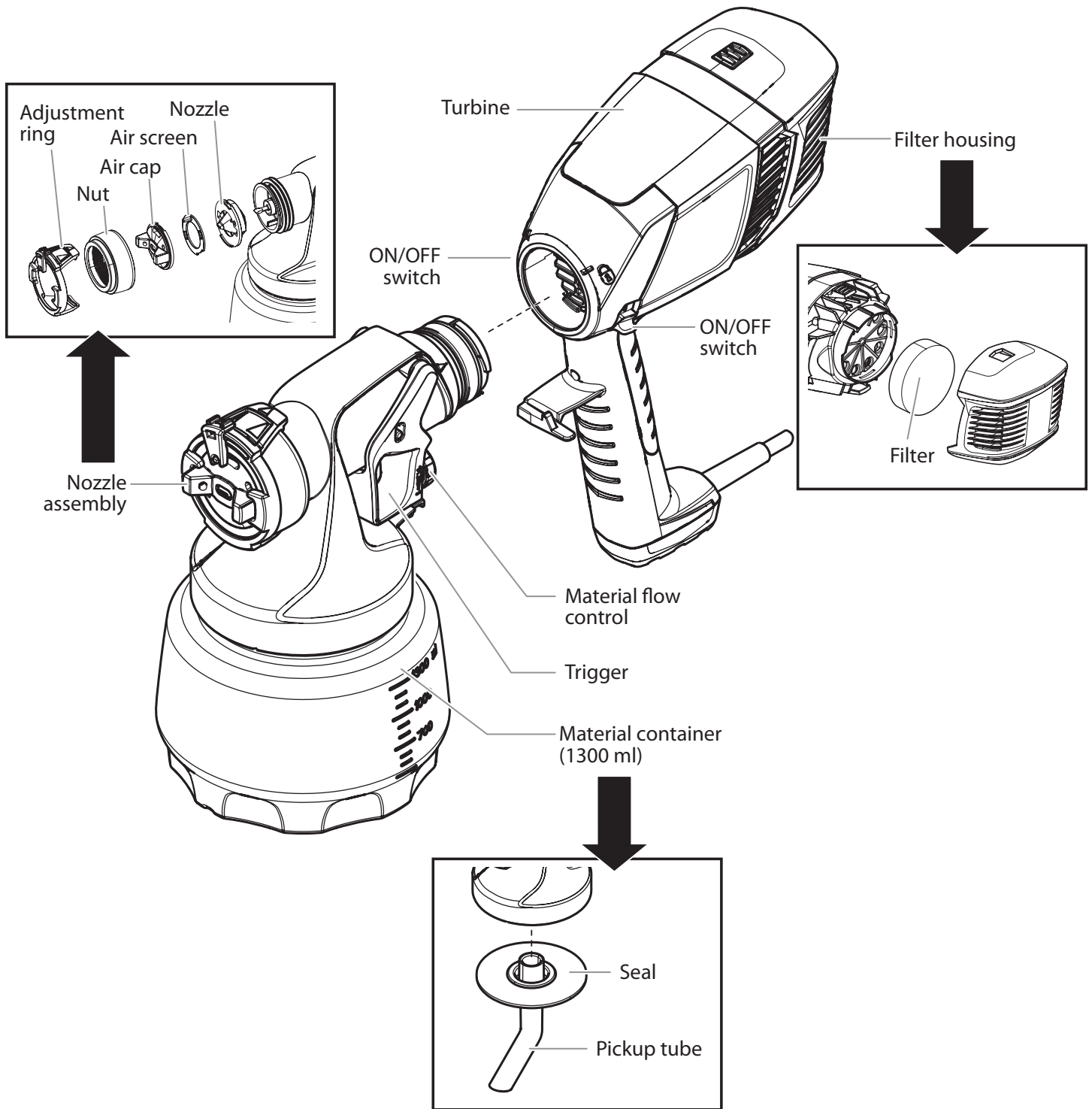
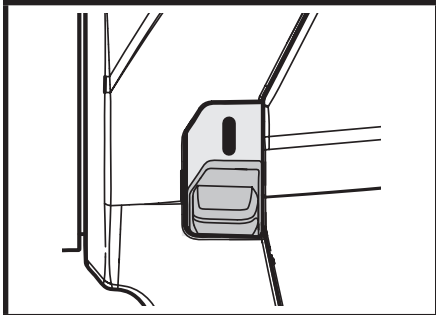


# CONTROLS AND FUNCTIONS



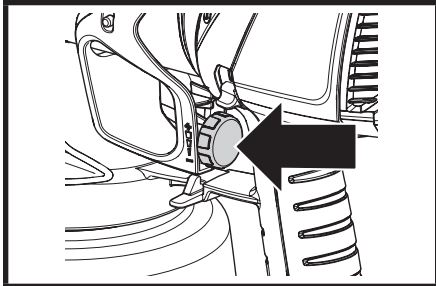
# CONTROLS AND FUNCTIONS



## ON / OFF SWITCH

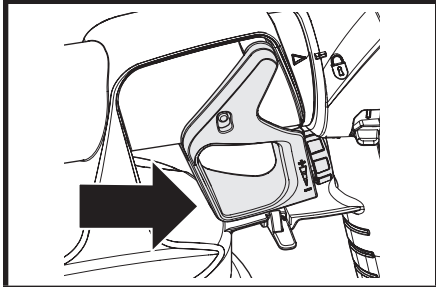
The ON/ OFF switch turns the turbine ON (I) and OFF (O).

No spray material will be delivered until trigger is pulled.



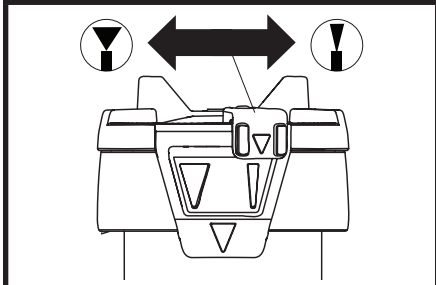
## MATERIAL FLOW CONTROL

The material flow control knob determines the amount of spray material that is sprayed from the spray nozzle.



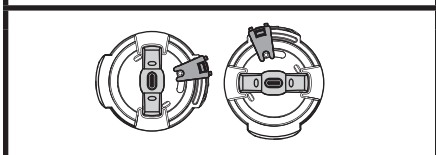
## TRIGGER

Pulling the trigger will deliver spray material from the material container to the nozzle assembly, where it is sprayed.



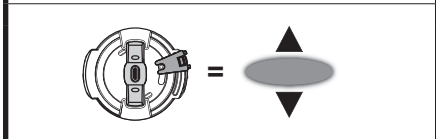
## SPRAY WIDTH LEVER

The spray width lever determines the width of the spray pattern.

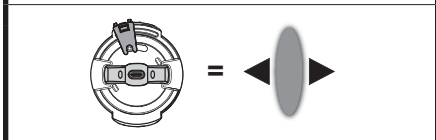


## ADJUSTMENT RING

The spray pattern shape is adjusted by turning the adjustment ring to either the vertical or horizontal positions.



Horizontal pattern (use 'up and down' spraying motion)



Vertical pattern (use 'side to side' spraying motion)