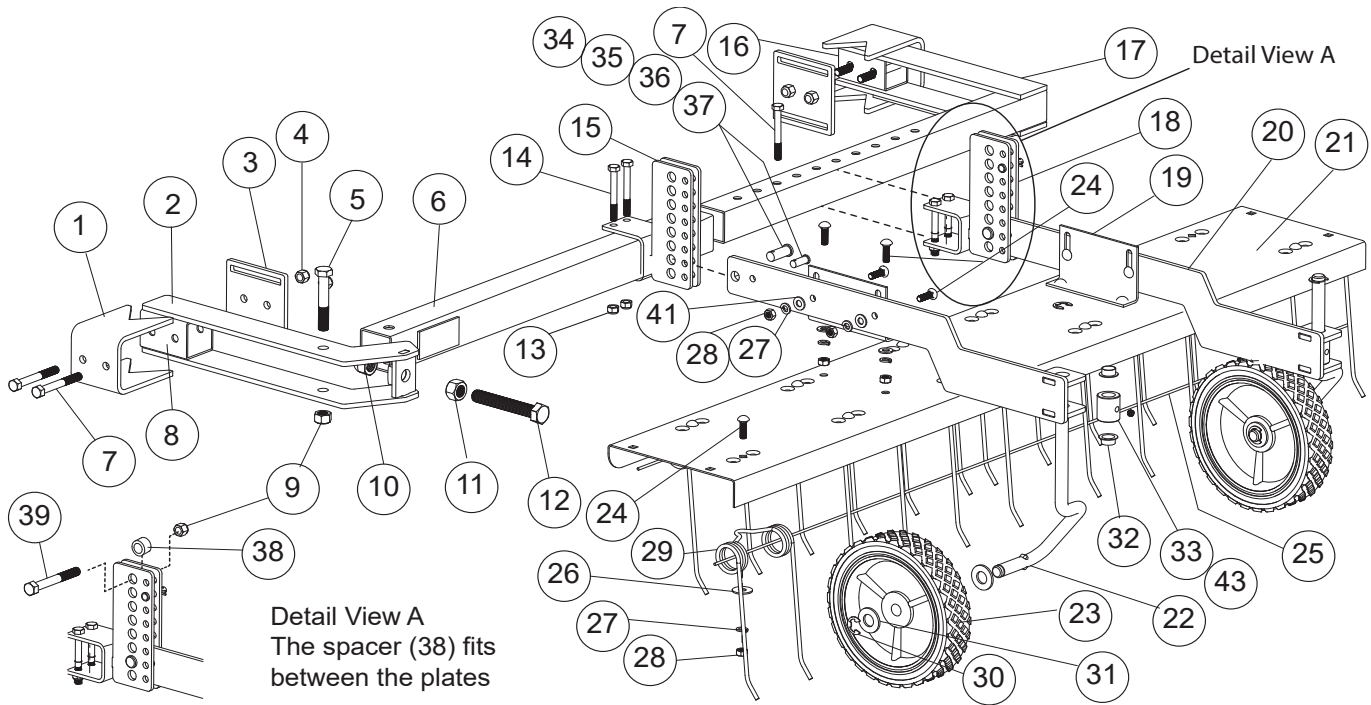


# COMPONENT VIEW AND REFERENCE LIST



REF	PART NO.	DESCRIPTION	QTY	REF	PART NO.	DESCRIPTION	QTY
1	1009744-10	"V" Bracket	2	21	1009773	Tray With Decal	1
2	1009749-10	Clamp Arm	1	22	R-1933-01	Axle	2
3	1009746-10	Clamp Plate	2	23	1009765	Wheel	2
4	B-4820	3/8" Nylon Lock Nut	5	24	11M1016P	5/16" x 1" Carriage Bolt	20
5	2M1656P	1/2" x 3-1/2" Hex Bolt	1	25	R1504	Safety Wire	2
6	1009774	Tube With Decal	1	26	R-618	Special Washer	12
7	2M1256P	3/8" x 3-1/2" Hex Bolt	5	27	40M1000P	5/16" Lock Washer	20
8	1009766-10	2" Spacer Tube	1	28	30M1000P	5/16" Hex Nut	20
9	B-5096Y	1/2" Nylon Lock Nut	3	29	R-616	Tine	12
10	1009763	5/8" Acorn Nut	1	30	F-577	5/8" E-Ring	4
11	30M2000P	5/8" Hex Nut	1	31	45M2121P	5/8" Washer	4
12	1009764	5/8" x 4" Hex Bolt	1	32	R-719	Nylon Bearing	4
13	B-4786	5/16" Nylon Lock Nut	4	33	R-720-01	Wheel Hub	2
14	2M1044P	5/16" x 2-3/4" Hex Bolt	4	34	R-2303	Clevis Pin (5/16" x 1-3/8")	2
15	1009752-10	Pivot Bracket Long	1	35	V-219P	Clevis Pin (1/2" x 1-1/4")	2
16	1009767-10	1-3/4" Spacer Tube	1	36	B-983	Hairpin Cotter	2
17	1009750-10	Fixed Arm	1	37	D-146P	Hairpin Cotter	2
18	1009751-10	Pivot Bracket Small	1	38	P-234	Spacer	2
19	R-713-10	Frame Bracket	2	39	2M1632P	1/2" x 2" Hex Bolt	2
20	1009770-10	Front Mount	2	41	45M1111P	5/16" Washer	8
				42	1009778	Rubber Edging (30")	1
				43	V-336	5/16" Set Screw	2