



Save time and money with a simplified connection that meets special NEC® requirements.

Designed for time Savings:

- Prewired - ready to install
- Factory installed ground bar - no kits required
- Factory assembled circuit breaker
- Bottom fed or top fed using a raintight hub
- Outdoor enclosure

Designed for Safety:

- Padlockable door prevents unauthorized persons from switching the breaker off
- Push to trip button easily allows routine testing of the breaker
- Meets code requirements for a safety disconnect



Warranty:

- Limited lifetime warranty on Type CH hot tub panels, thermal magnetic, and GFCI branch circuit breakers.
- 10 year limited warranty on Type BR hot tub panels, thermal magnetic, and GFCI branch breakers.

Ordering Information:

- Contact your local Eaton representative today for more information on Eaton's Hot Tub Panels, or visit www.eaton.com.



The National Electrical Code is a registered trademark of the National Fire Protection Association.

UL is a registered trademark of Underwriters Laboratories.

All other trademarks are property of their respective owners.

Eaton Corporation
 Electrical Sector
 1111 Superior Ave.
 Cleveland, OH 44114
 United States
 877-ETN-CARE (877-386-2273)
 Eaton.com

© 2011 Eaton Corporation
 All Rights Reserved
 Printed in USA
 Publication No. SA00308001E
 August 2011

Eaton Hot Tub Panels

Hot Tub Panels

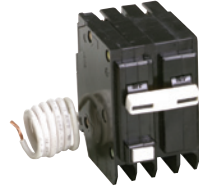


Eaton Hot Tub Panels are available in two types

Type BR

Features:

- 10 year warranty
- UL® Listed
- Factory installed two pole ground fault circuit interrupter (GFCI)



Type BR Two Pole GFCI

Product Selection

Catalog Number	Main Amp Rating	Enclosure Type	Dimensions	Factory Installed Circuit Breaker	Wire Size Range Cu/Al 60°C or 75°C for Main Lugs
BR40SPA	40	Outdoor	9.75"H x 5.0"W x 4.0"D	GFCB240	#8 - #2
BR50SPA	50	Outdoor	9.75"H x 5.0"W x 4.0"D	GFCB250	#8 - #2

Type CH

Features:

- Two extra circuits for additional loads
- Limited lifetime warranty
- UL Listed
- Tough powder coated galvanized steel enclosure
- Factory installed two pole ground fault circuit interrupter (GFCI)



Type CH Two Pole GFCI

Product Selection

Catalog Number	Main Amp Rating	No. of Extra Circuits Available	Enclosure Type	Dimensions	Factory Installed Circuit Breaker	Wire Size Range Cu/Al 60°C or 75°C for Main Lugs
CH30SPA	30	2	Outdoor	11.75"H x 6.75"W x 4.25"D	CH230GF	#14 - 1/0
CH40SPA	40	2	Outdoor	11.75"H x 6.75"W x 4.25"D	CH240GF	#14 - 1/0
CH50SPA	50	2	Outdoor	11.75"H x 6.75"W x 4.25"D	CH250GF	#14 - 1/0
CH60SPA	60	2	Outdoor	11.75"H x 6.75"W x 4.25"D	CH260GF	#14 - 1/0

The National Electrical Code® safety requirements for spa pumps:

- GFCI protection
- Visible disconnect

