



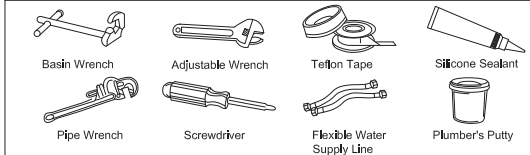
Design House is a registered brand of DHI Corp.  
Mequon, WI 53092  
1-800-558-8700

## SPRINGPORT SINGLE HANDLE KITCHEN FAUCET WITH SIDE SPRAY

Models 575715, 545723

Your new Design House faucet will give you years of trouble free performance. Thank you for choosing our product for your home. **Please read all of these instructions carefully before installing your new faucet.**

### Helpful tools to install this faucet:



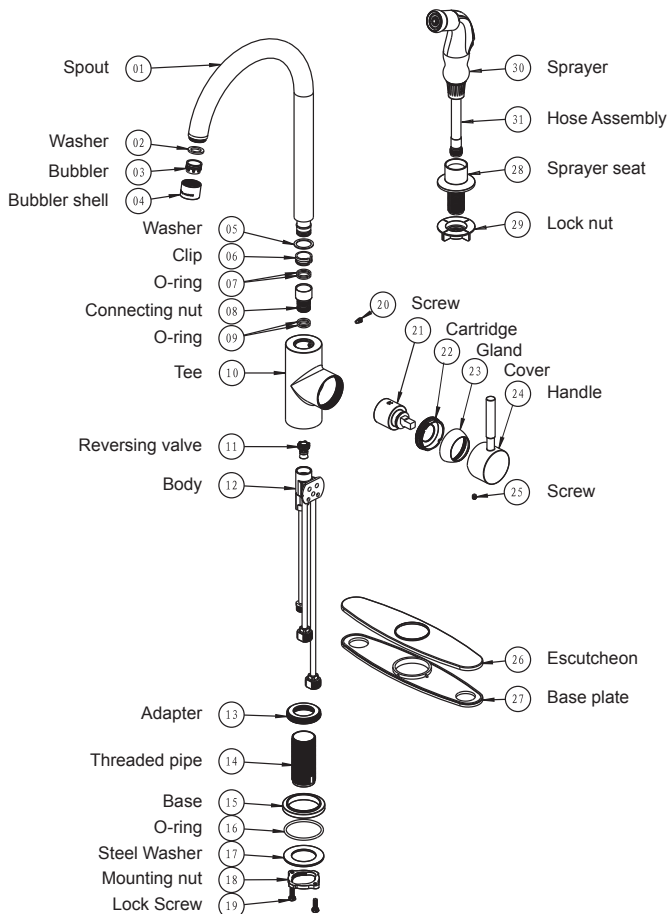
**Warning!** Avoid contact of plastic parts with plumber's putty, pipe dope, or any other oil based compound. Use a silicon, acrylic, or latex based sealant where needed.

### IMPORTANT POINTS

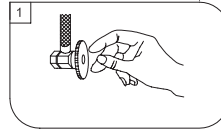
Wrap threaded connections (except aerator thread in spout or where o-ring or rubber sealant are present) with Teflon tape available from your local hardware or plumbing supply store. Always wrap in a clockwise direction.

### SAFETY TIPS

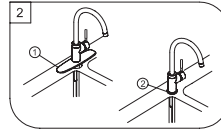
**ALWAYS** protect your eyes with safety glasses



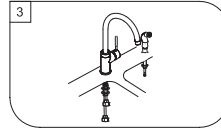
## INSTALLATION PROCEDURE



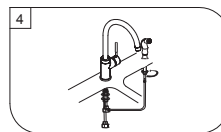
1. Shut off water supplies. Remove old faucet. Clean sink surface in preparation for new faucet.



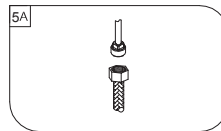
2. Before installation, remove the steel washer and the mounting nut from the faucet. If installing the faucet with the escutcheon, begin with step ①. If installing the faucet with base, begin with step ②. ① Place escutcheon and plate on bottom of new faucet and position on sink. Position faucet through center mounting hole. ② Position base on bottom of faucet body. Insert faucet and base through single mounting hole.



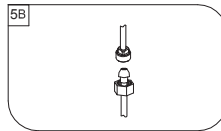
3. Secure the faucet to the sink by installing the steel washer and mounting nut onto the body from underside of sink. Tighten mounting nut with the locking screws.



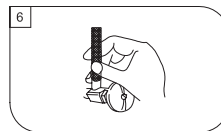
4. Install sprayer (optional). After faucet is installed, position sprayer support in far right hole in sink. Insert spray hose down through the support. Secure the sprayer seat to the sink by threading the lock nut onto the mounting stud. Hand tighten the lock nut onto the spray seat. Under the sink, connect the spray hose to the connection on the faucet.



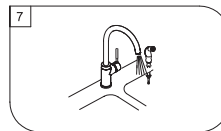
5A. Stainless steel braided faucet supply tubes: This is the simplest of all installations. If you are using stainless steel braided faucet supply tubes, this faucet requires one end of the supply tube to have a 1/2" female IPS connection. The other end of this supply tube must match the thread on the water supply fittings or shut off valve under your sink. Once you have identified the required tube, carefully follow the manufacturer's installation instructions for each tube. Note: when looking at the faucet the left pipe is the Hot water side, the right pipe is the Cold water side.



5B. Flexible supply lines with 3/8" OD: If you are using flexible supply lines to connect the faucet to the water supply, slip the coupling nut behind the ball-nose of the flexible supply tube. The ball nose will go partially into the IPS shank or fitting. Tighten the coupling nut (DO NOT OVER TIGHTEN). Install the opposite end to your water supply according to the manufacturer's instructions for both tubes. Note: when looking at the faucet the left pipe is the Hot water side, the right pipe is the Cold water side.



6. Turn on water supply valves and check for leaks on supply lines and connection lines.



7. Important: After installation is completed, remove aerator. Turn on water supply and allow both hot and cold water to run for at least one minute each. While water is running, check for leaks. Re-install aerator. Do not over tighten.

## MAINTENANCE

Your new Design House faucet is designed to give you years of trouble-free performance. Keep it looking new by cleaning it periodically with a soft cloth. Avoid abrasive cleaners, steel wool and harsh chemicals as these will dull the finish and void your warranty.

Brass finishes are polished, then protected with a lacquer coating to help prevent tarnishing. Clean these surfaces only with a damp, soft cloth.

### CONSUMER PROTECTION WARNING

Under the Safe Drinking Water Act, the U.S. Environmental Protection Agency restricts the amount of lead used in brass and solder. Your new faucet is made in strict compliance with all government standards. The materials used in the manufacture of this faucet are of industry standard quality and are similar to other plumbing products having brass fittings.

To reduce the amount of lead in your drinking water, allow the water to run for a moment before filling your glass and remember to always use cold water for drinking purposes.