

DRYCONN®

WATERPROOF CONNECTORS

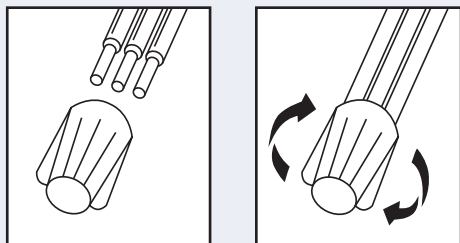
Filled Connectors for Outdoor/Electrical Use



INSTALLATION INSTRUCTIONS

IMPORTANT: Turn off power before installing or removing connector. Product to be used in accordance with local and national codes.

1. Strip #22 - 18 wires 1/2" (12.7mm) and #16-12 wires 3/8" (9.5mm).
2. Align any frayed strands or conductors.
3. Pre-twisting unnecessary. Place stripped wires together with ends of insulation even.
4. Twist connector onto wires pushing firmly until hand-tight. Do not over torque.
5. Wipe sealant in and around conductors and connector opening while tightening. Do not reuse.



NEC Required for Outdoor Connections

Selected 600V Wire Combinations
For use with solid and/or stranded combinations.

2 #14	1 #14 w/1-3 #18 or #20	3 #16 w/1 #18, #20 or #22
2-5 #18	2 #14 w/1 #18	1 #18 w/1-4 #20
3-5 #20	1 #16 w/1 #18	4 #18 w/1 #20
1 #14 w/1 or 2 #16	2 #16 w/1-2 #18 or #20	4 #20 w/1 #22

Contact factory for a complete list of wire combinations at 800.633.0232.

Small Waterproof Connectors

SKU #	Selling Unit
62110	Card of 6
62125	Bag of 25
62135	Bag of 100
62146	Canister of 150
62150	Bag of 500

PRODUCT SPECIFICATIONS & MEASUREMENTS

Max. Voltage: 600V max. building wire
(1000V max. signs or luminaires)

Connector Size: 27/32" x 7/16"

Wire Type: Copper/Copper

Wire Range: Min #22/Max #12

Temperature Rating: 105°C (221°F)

Silicone Sealant Temperature: -45°F to 400°F

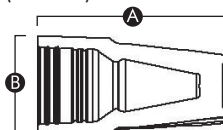
UL Designation: SWP*

Measurements (Inches):

A - 0.85

B - 0.44

C - 0.31



UL Listed as a Sealed Wire Connector. For use in dry, damp, wet locations below or above grade when used in an enclosure. For use in direct bury applications when operating at 30 volts or less.



DRYCONN®

WATERPROOF CONNECTORS

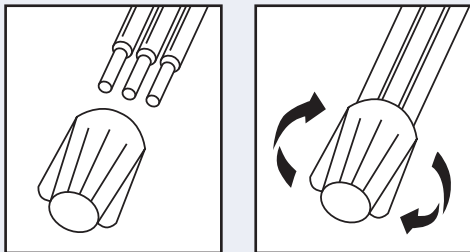
Filled Connectors for Outdoor/Electrical Use



INSTALLATION INSTRUCTIONS

IMPORTANT: Turn off power before installing or removing connector. Product to be used in accordance with local and national codes.

1. Strip wires 5/8" (15.9mm).
2. Align any frayed strands or conductors.
3. Pre-twisting unnecessary. Place stripped wires together with ends of insulation even.
4. Twist connector onto wires pushing firmly until hand-tight. Do not over torque.
5. Wipe sealant in and around conductors and connector opening while tightening. Do not reuse.



NEC Required for Outdoor Connections

Selected 600V Wire Combinations
For use with solid and/or stranded combinations.

1-3 #12	2 #14 w/2-4 #16	1 #12 w/1-3 #14
2-4 #14	1 #10 w/1-2 #14	1 #12 w/2-4 #18
2-6 #16	1 #10 w/1-3 #16	1 #14 w/3-4 #18
4 #14 w/1 #18	1 #12 w/1-4 #16	2 #12 w/1 #14

Contact factory for a complete list of wire combinations at 800.633.0232.

Medium Waterproof Connectors

Catalog #	Selling Unit
62210	Card of 5
62225	Bag of 20
62235	Bag of 100
62241	Canister of 100
62250	Box of 500

PRODUCT SPECIFICATIONS & MEASUREMENTS

Max. Voltage: 600V max. building wire
(1000V max. signs or luminaires)

Connector Size: 1 19/64" x 43/64"

Wire Type: Copper/Copper

Wire Range: Min #22/Max #8

Temperature Rating: 105°C (221°F)

Silicone Sealant Temperature: -45°F to 400°F

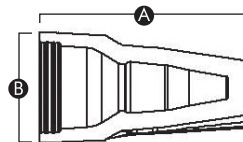
UL Designation: MWP

Measurements (Inches):

A - 1.30

B - 0.67

C - 0.51



UL Listed as a Sealed Wire Connector. For use in dry, damp, wet locations below or above grade when used in an enclosure. For use in direct bury applications when operating at 30 volts or less.

