

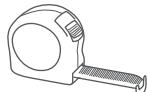
# DRAPERY ROD SET INSTALLATION GUIDE

Note:

Finial shown is for illustration purposes only. It may not represent the style of finial purchased. For larger width windows, two persons may be required for easier leveling.

## Tools needed:

Tape Measure, Pencil, Drill & Bit Set, Philips head Screwdriver, Level



Tape Measure



Pencil



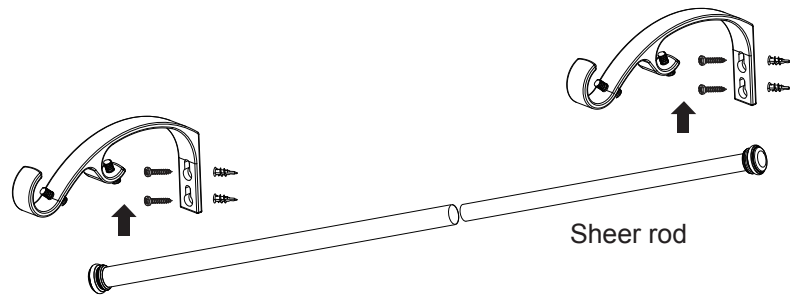
Drill & Bit Set



Philipshead  
Screwdriver



Level



## BRACKET INSTALLATION

### STEP 1.

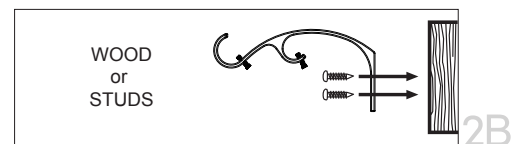
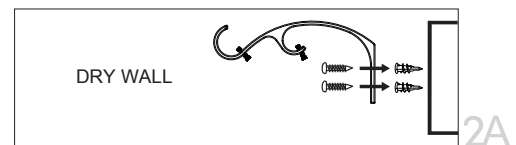
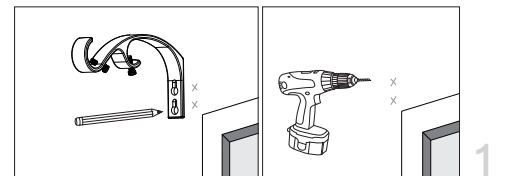
Place brackets against wall at desired locations and mark screw holes. Use tape measure and level to make sure marked screw holes are horizontal to each other.

### STEP 2A. (FOR MOUNTING TO DRYWALL OR PANELING)

Pre-drill two pilot holes for each bracket (1/4" drill bit) and insert anchors into wall and insert screws into wall anchors.

### STEP 2B. (FOR MOUNTING TO WOOD OR STUDS)

If mounting directly into wood or studs, pre-drill two pilot holes for each bracket (1/4" drill bit) and install bracket on the wall with screws provided.



## ROD INSTALLATION

### STEP 3.

Extend the smaller diameter telescopic sheer rod until they separate.

### STEP 4.

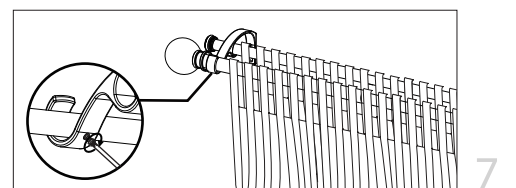
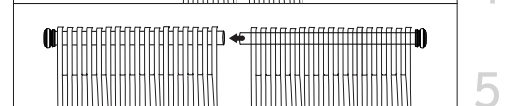
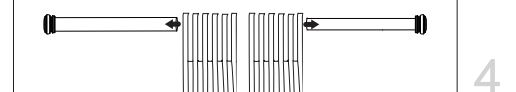
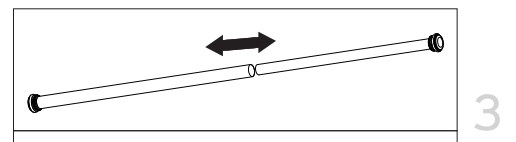
Feed half of the sheer panels (not included) onto one sheer rod and the other half of the sheer panels (not included) onto the second sheer rod.

### STEP 5.

Connect the two sheer rods to make it a telescopic sheer rod.

### STEP 6.

Place telescopic sheer rod onto the rear rod holder of both brackets.



## FINAL ADJUSTMENT

### STEP 7.

Secure each rod by tightening screws provided.

### STEP 8.

Repeat step 3 to 7 for the larger diameter telescopic curtain rod (sold separately).