



A Product of Archer Company USA, Inc.

The Most Advanced Technology

Non-Explosive Controlled Demolition Agent By providing silent expansive cracking

For Demolition, Reinforced Concrete Cutting, Excavating,
Rock Breaking, Stone Quarrying, Mining and More ...



Free Sample! *Business Only
Free Job Estimates!
Free Drilling Designs!

HIGHLIGHTS

- Amazing 18,000 PSI expansive strength when mixed with water.
- Easy to use, just mix with water, pour into holes, then it expands.
- Cracks reinforced concrete and rocks safely and quietly.
- An alternative to blasting, diamond blade saw, hydraulic breaker and jackhammer, which is safer, more efficient, works without noise, vibration, or dust by providing silent expansive cracking.
- No special permits, insurance, training, or equipment needed.
- SDS (Safety Data Sheet) is available upon request.

CONTENTS:

	Page
What is Dexpan?	2
Job Photos	
♦ Concrete Demolition	3
♦ Rock Breaking and Excavating	7
♦ Stone Quarrying and Mining	9
♦ Underwater Demolition	11
How to use Dexpan?	12
Drilling Designs	15
Introducing Archer PRO Diamond Tools	Back

Archer Company USA Inc. / Dexpan® USA
Web: www.Dexpan.com
Tel: **575-528-5454** (Se Habla Español)



Non-Explosive Controlled Demolition Agent
By providing silent expansive cracking

For Demolition, Reinforced Concrete Cutting, Excavating, Rock Breaking, Stone Quarrying, Mining and More ...

What is Dexpan®?

Dexpan® is a powder with amazing 18,000 PSI expansive strength when mixed with common water. Poured into holes, Dexpan® breaks reinforced concrete & rock safely and quietly, while providing *SILENT* cracking. Since Dexpan® provides controlled demolition according to drilling patterns, it is very easy to break reinforced concrete and all kinds of stone into desired sizes and shapes, without noise, vibration or dust.



- * Packing I: 44 lb. box (includes Four 11 lb. bags)
- * Packing II: 11 lb. plastic container
- * Packing III: 44 lb. plastic container

In the demolition, concrete cutting and excavating industry, Dexpan® helps break reinforced concrete and rock into chunks, making the job easier to expose rebar to enable

cutting and removing without damaging existing areas / parts i.e. footings, foundations, walls.

In the mining and quarrying industry, Dexpan® helps to achieve almost perfect slabs and blocks from limestone, onyx, marble, granite or any other type of stone you are working with. Compared to blasting, Dexpan® helps conserve the waste of valuable stone, the cost of high insurance, costly storage, and labor.

Dexpan® can also be applied along with traditional methods like primer cord, hydraulic breakers, diamond blade saws and jackhammers to help cut cost, work time and increase safety. Dexpan® can make the job more efficient and cost effective.

What can Dexpan® help you with?



Demolition of Reinforced Concrete



Rock Breaking, Excavating



Stone Quarrying & Mining



Underwater Demolition

Demolition and Concrete Cutting

- ◆ Demolition of mass reinforced concrete, foundations for machinery, piers, pillars, beams, bridges, retaining walls
- ◆ Partial demolition of various concrete structures
- ◆ Reinforced concrete cutting

Excavating and Rock Breaking

- ◆ Excavation of rock
- ◆ Splitting of boulders
- ◆ Rock and slab breaking for road expansion
 - ◆ For resident development
 - ◆ Excavation associated with tunneling
 - ◆ Trenching shaft sinking
- ◆ For various types of construction work

Stone Quarrying and Dimension

- ◆ Non-Explosive limestone, onyx, marble, granite quarrying
- ◆ Controlled expansive cracking to avoid waste of Valuable stone

Types of Dexpan®

(Depending on rock / concrete temperature)

- Dexpan® I** 77 to 104 F° (25 to 40 C°)
- Dexpan® II** 50 to 77 F° (10 to 25 C°)
- Dexpan® III** 23 to 50 F° (-5 to 10 C°)

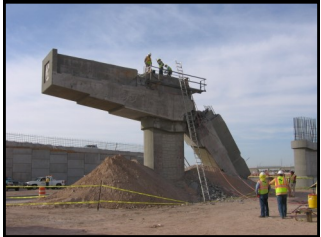


Non-Explosive Controlled Demolition Agent
By providing silent expansive cracking

**For Demolition, Reinforced Concrete Cutting, Excavating,
Rock Breaking, Stone Quarrying, Mining and More ...**

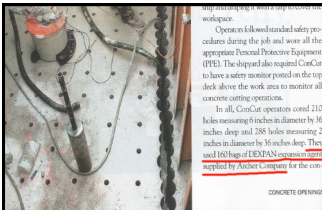
Non-Explosive Demolition of Highway Bridge Piers

At Biggs Army Airfield, El Paso, Texas United States 2007



Concrete Removal of Ferry Ballast

Concrete Opening Magazine, United States 2006



... and attaching it with a trip to cover the workspace.
Operators followed standard safety procedures during the job and wore all the appropriate Personal Protective Equipment (PPE). The shipyard also required ConCut to have a safety monitor posted on the top deck above the work area to monitor all concrete cutting operations.
In all, ConCut operators cored 213 holes measuring 6 inches in diameter by 36 inches deep and 288 holes measuring 2 inches in diameter by 36 inches deep. They used 160 bags of DEXPAN expansive agent supplied by Archer Company for the con-

CONCRETE OPENINGS

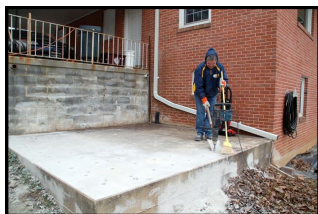




Non-Explosive Controlled Demolition Agent
By providing silent expansive cracking

Noiseless Concrete Breaking in Residential Area

West Virginia, United States 2003



Interior Demolition of Concrete Foundation

Houston, TX United States 2009



Demolition of Street Light Posts

New Mexico, United States 2008





*Non-Explosive Controlled Demolition Agent
By providing silent expansive cracking*

Demolition of Reinforced Concrete Foundations United States 2004



Demolition of Downstream Water Dam United States 2010

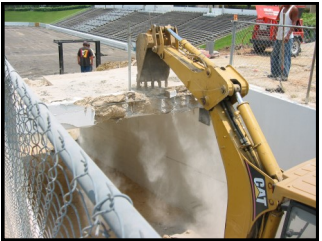


Swimming Pool Demolition United States 2005



Non-Explosive Demolition of a School Stadium

Dallas, Texas United States 2002



Concrete Wall Demolition with Horizontal Holes

El Paso, Texas United States 2011



Removal of Concrete Wall that close to pumps & pipes

New York, United States 2003



The need for DEXPAN on this job was in an area where no pneumatic dust or noise was allowed and it was an area with pumps, the area was not accessible for machines.



*Non-Explosive Controlled Demolition Agent
By providing silent expansive cracking*

Non-Explosive Rock Blasting
United States 2004



Rock Removal for Swimming Pool Project
Molokai, Hawaii, United States 2008



Granite Boulder Breaking
United States 2004





*Non-Explosive Controlled Demolition Agent
By providing silent expansive cracking*

Rock Breaking for Swimming Pool Project

United States 2004



Construction Site Preparation & Rock Breaking

United States 2005



Rock Trenching and Excavating

United States 2008





*Non-Explosive Controlled Demolition Agent
By providing silent expansive cracking*

Non-Explosive Limestone Quarrying

Missouri, United States 2004



Non-Explosive Granite Quarrying

Idaho, United States 2004



Non-Explosive Limestone Quarrying

Arkansas, United States 2008





*Non-Explosive Controlled Demolition Agent
By providing silent expansive cracking*

**For Demolition, Reinforced Concrete Cutting, Excavating,
Rock Breaking, Stone Quarrying, Mining and More ...**

Non-Explosive Marble Quarrying

Torréon, Mexico 1995



Non-Explosive Sandstone Quarrying



**Dexpan is Perfect for
controlled mining and
quarrying to avoid waste
of valuable stone
and to work safer.**

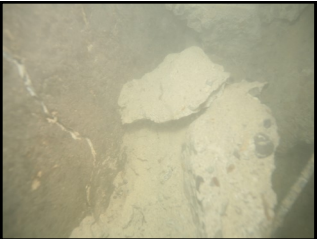


Non-Explosive Controlled Demolition Agent
By providing silent expansive cracking

**For Demolition, Reinforced Concrete Cutting, Excavating,
Rock Breaking, Stone Quarrying, Mining and More ...**

***Underwater Demolition of Bridge Piers**

United States 2007 *Used plastic tubing to keep Dexpan from water.



***Underwater Rock Breaking**

Cancun, Mexico 2007 *Used plastic tubing to keep Dexpan from water.





Please ALWAYS wear



Usage Instruction

Rubber Gloves Safety Goggles Dust Mask

Concrete Demolition and Rock Breaking has never been EASIER!

3 Easy Steps to SUCCEED: Drill, Mix & Fill

1) Drilling:

- Use **1.5 inches** (3.8 cm) drill bit, holes should be drilled **1 ft.** (30 cm) apart. 80-90% of the depth, do not go through. (Diagram 1)
- * Using smaller drill bit will reduce Expanding Strength.
- * Please call for applications with **depths less than 6 inch.**

2) Mixing:

- In a bucket, combine **0.4 gallons** (1.5 liters) of cold water with one 11 lb. (5 kg.) bag of Dexpan®. (Diagram 2)
- Mix well to a slurry, no lumps. (a drill and paddle is recommended)

3) Filling:

- Dexpan® slurry should be poured into holes within **10-15 minutes** after mixing. (Diagram 3)

Coverage:

Normally one 11 lb. (5 kg.) bag of Dexpan® can fill up to **9 lineal feet** (2.5 meters) of 1.5 inches (3.8 cm) diameter holes.

Cracking Or Breaking Time:

Properly mixed, the cracks may appear after 2~8 hours. Allow **24 hours** for best results. If Dexpan® completely dries into powder and did NOT crack, pour additional water onto filled holes. DO NOT remove Dexpan® from holes.

Warning! Improper use may cause serious injury **Important Safety Precautions and First Aid:**

- **FORCEFUL BLOWOUTS may occur once mixed with water!** Keep a safe distance. DO NOT look directly into filled holes. Use of Dexpan® in hot weather could increase chances of blowouts. DO NOT pour into hot holes. Use iced water in summer.
- **Alkaline Burns may occur. DO NOT breathe in dust. AVOID eye and skin contact.** If eye or skin contact should occur, rinse it off IMMEDIATELY with plenty of water for at least 20 minutes, and consult doctor. Refer to SDS.
- Choose correct type of Dexpan **based on rock / concrete temperature.**
- Keep Dexpan® in DRY storage. Seal box / bag after use.
- Keep out of reach of children and pets.



1. Drill



2. Mix



3. Pour

SDS (Safety Data Sheet) is available upon request.

For technical support, Please call **575-528-5454** (Se Habla Español)

Visit us at www.Dexpan.com



Non-Explosive Controlled Demolition Agent
By providing silent expansive cracking

**For Demolition, Reinforced Concrete Cutting, Excavating,
Rock Breaking, Stone Quarrying, Mining and More ...**

Limited Warranty

- For best results, drilling and mixing are critical to Dexpan®. First time users are highly recommended to call our FREE technical support group before use (Tel: 575-528-5454).
- All products of Archer Company USA (DBA Dexpan USA) are warranted to be free from defects in materials or workmanship for one year from the date of purchase.
- Within this period, Archer (Dexpan) will, at its sole option, replace any products that fail in proper and normal use. Such replacement will be made at no charge to the customer, provided that the customer shall be responsible for any transportation cost.
- This warranty does not cover failures due to abuse, misuse, accident, or unauthorized alterations. Always follow safety precautions and usage instruction on our website.
- Written description of problem and supporting job photos are necessary to warrant this claimer.

Disclaimer

- Dexpan® may be used to break concrete including reinforced concrete, rocks including limestone, granite, marble, onyx, and flagstone. Call before you try on other material. (i.e. porous or decomposed rocks.)
- Breakage or cracks vary due to drilling pattern done by customer. Archer (Dexpan) is not responsible for any unexpected results.
- Cracking Time is not guaranteed. Allow at least 24 hours for complete set time. Archer (Dexpan) is not responsible for any job delay lost.

Procedure for Claims under Limited Warranty

Archer (Dexpan) will help customer to resolve the problem:

- In the event Dexpan® does not work, allow an extra 48 hours. If it fails after 48 hours, contact technical support before you try other means. Do not remove Dexpan® from holes. This may void the warranty if the Dexpan® is removed.
- Take photos showing job was done according to proper procedures. A written description showing purpose of the job, dimensions, drilling patterns, depth of holes, water mixing rate, weather and temperature. Both description and job photos are necessary to obtain warranty service.
- Archer (Dexpan) gives customer an analysis report showing what could be the problem. Onsite technical support may be requested for larger projects.
- Archer (Dexpan) will honor this warranty based on the evidence provided and approval.

Video 1: What is Dexpan?

Video 2: How to use Dexpan?





Non-Explosive Controlled Demolition Agent
By providing silent expansive cracking

For Demolition, Reinforced Concrete Cutting, Excavating, Rock Breaking, Stone Quarrying, Mining and More ...

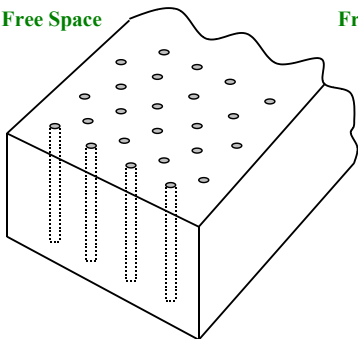
More Info: (call 575-528-5454 if you have any questions)

- **Well Designed Hole Drilling Pattern** will minimize consumption of Dexpan® by cutting into desired sizes.
- To insure success, drilled perimeter holes or angled holes may be needed to provide **Expansion Space**.
- For better results, it is important to note both air and material temperature. Material temperature is the temperature inside of the rock or concrete which can be different from the air temperature.
- In summer, Dexpan® should be used in the morning when material temperature is cool.
- In summer, provide shade to filled holes. But allow the holes to have space to breathe. **DO NOT** Plug or constrict holes.
- If Dexpan® completely dries into powder and did **NOT** crack, pour additional water onto Dexpan® filled holes.

Hole Drilling Designs:

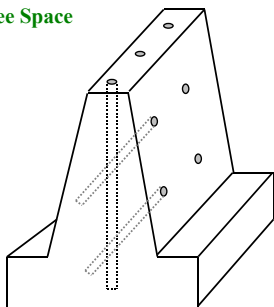
Objects have Free Space for Dexpan to Expand to:

Free Space



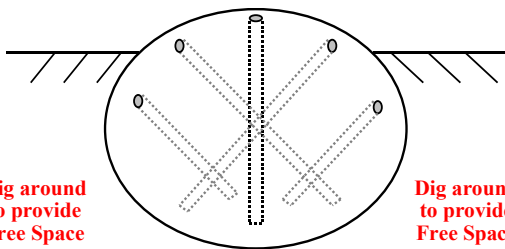
Drill Holes vertically for Regular shapes

Free Space



Drill Holes at an angle for Irregular shapes

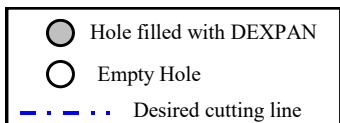
Objects DO NOT have Free Space for Dexpan to Expand to:



Dig around to provide Free Space

Dig around to provide Free Space

Underground rock Excavation



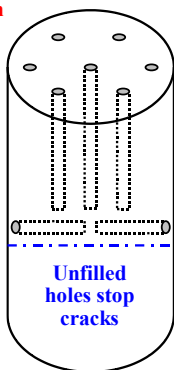
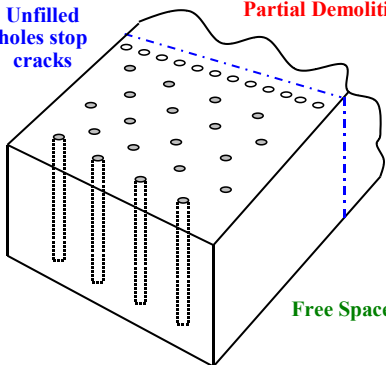


Non-Explosive Controlled Demolition Agent
By providing silent expansive cracking

For Demolition, Reinforced Concrete Cutting, Excavating,
Rock Breaking, Stone Quarrying, Mining and More ...

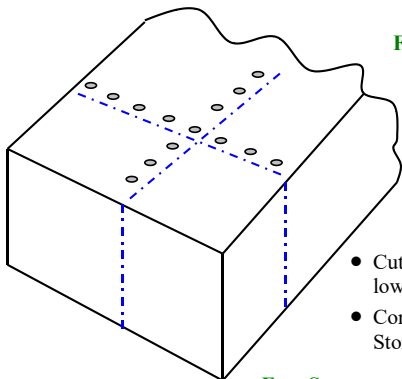
Unfilled
holes stop
cracks

Partial Demolition



Partial Demolition with
Vertical desired cutting line

Partial Demolition with
Horizontal desired cutting line

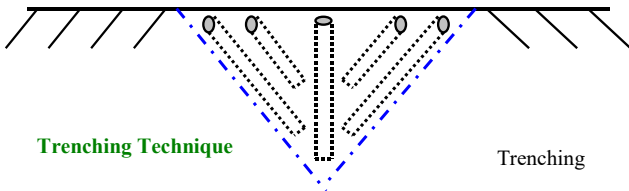


Free Space

**Well Designed
Drilling Patterns
can make your work
more effective!**

- Cut into desired size to lower cost.
- Controlled Breaking for Stone Quarrying.

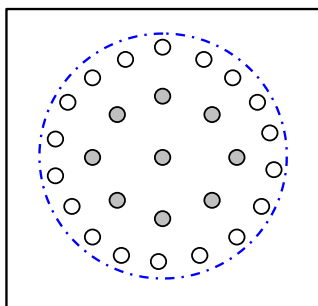
Free Space



Trenching Technique

Trenching

**Tunneling
Technique**



**Unfilled holes
provide
Free Space**

Tunneling

Premium Quality Diamond Tools

For both Construction and Stone Fabricating

FREE SHIPPING
on orders over \$199

*Only valid in the lower 48 U.S. States



Diamond Blades

- General Purpose Blades, Demolition Blades
- Concrete Blades, Asphalt Blades
- Tile Blades, Masonry Blades, Granite Blades
- Crack Chaser, Tuck Pointing Blades
- Bridge Saw Blades, Ductile Iron Blades, Ring Saw Blades

Diamond Wire

- Diamond Wires for sawing reinforced concrete, granite & marble

Core Bits

- Concrete Core Bits
- Stone Core Bits

Diamond Grinding Tools

- Cup Wheels, Drum Wheels
- Antique Brushes, Diamond Burr Sculpting Kit
- Floor Grinding Plates, Grinding Blocks, Grinding Shoes

Polishing Pads

- 3-STEP, Dry Use and Wet Use Polishing Pads, Convex Polish Pads
- Backers
- Concrete Floor Polishing Discs

Router Bits

- Router Bits for Portable Routers with M8 or M10 Adaptors
- Router Bits for Angle Grinders with 5/8"-11 Thread