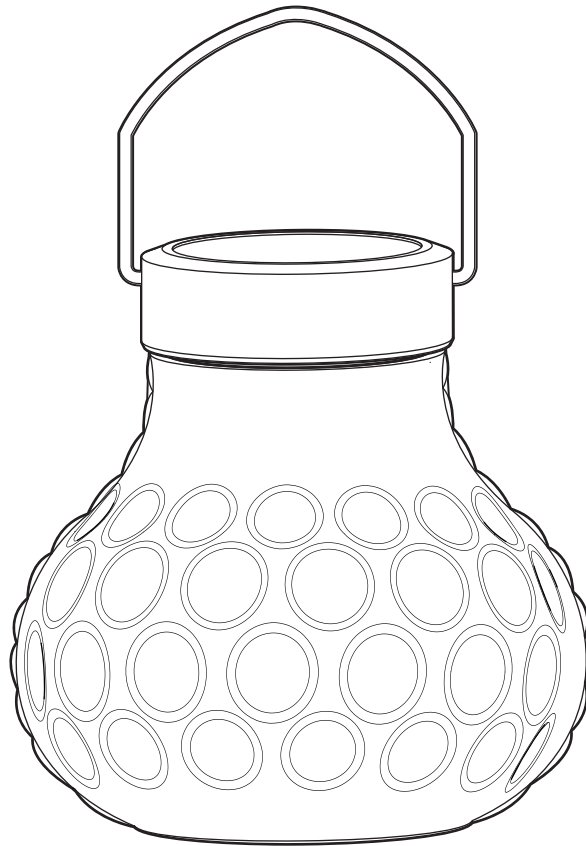


Item # 1001486803  
Model #NXT-6007

# USE AND CARE GUIDE

---

## SOLAR ART GLASS LANTERN



Questions, problems, missing parts? Before returning to the store,  
call Customer Service  
8 a.m. - 6 p.m., EST, Monday-Friday

1-877-527-0313

[HOMEDEPOT.COM](http://HOMEDEPOT.COM)

# Table of Contents

Table of Contents.....	2	Assembly .....	4
Safety Information.....	2	Maintenance.....	4
Warranty.....	2	Replacing the Battery.....	4
Pre-Assembly .....	3	Care and Cleaning .....	5
Planning Assembly.....	3	Troubleshooting.....	5
How Solar Works.....	3		
Package Contents .....	3		

# Safety Information

Please read and understand the instructions in this entire manual before installing this solar light.



**WARNING:** Only use NiMh rechargeable batteries with these solar lights. Do not mix battery types.



**WARNING:** Do not open, short circuit, or mutilate batteries as injury may occur. Batteries must be recycled or disposed of properly.

# Warranty

## ONE YEAR LIMITED WARRANTY

The manufacturer warrants this product to be free for one (1) year against any defects that are due to faulty materials or workmanship. This warranty applies only to the original consumer purchaser and only to products used in normal use and service. If this product is found to be defective, the manufacturer's only obligation, and your exclusive remedy, is the repair or replacement of the product at the manufacturer's discretion, provided that the product has not been damaged through misuse, abuse, accident, modifications, alterations, neglect, or mishandling. This warranty shall not apply to any product that is found to have been improperly installed, set up, or used in any way not in accordance with the instructions supplied with the product. This warranty shall not apply to a failure of the product as a result of an accident, misuse, abuse, negligence, alteration, or faulty installation or any other failure not relating to faulty workmanship. This warranty shall not apply to the finish on any portion of the product, such as surface and/or weathering, as this is considered normal wear and tear. The manufacturer does not warrant and specifically disclaims any warranty, whether expressed or implied, or fitness for a particular purpose, other than the warranty contained herein. The manufacturer specifically disclaims any liability and shall not be liable for any consequential or incidental loss or damage, including any labor/ expense costs involved in the replacement or repair of said product.

Contact the Customer Service Team at 1-877-527-0313 or visit [www.HomeDepot.com](http://www.HomeDepot.com).

# Pre-Assembly

## PLANNING ASSEMBLY

Compare all parts in the package with the Package Contents list. Verify that all parts are included and that there is no damage. If any parts are missing or damaged, contact the Customer Service Team at 1-877-527-0313 or visit [www.HomeDepot.com](http://www.HomeDepot.com).

Choose a location where direct sunlight can be absorbed onto the face of the solar panel for as many hours as possible throughout the day. Shadows cast by homes, trees, and structures will restrict the charging of the battery and affect the total hours of operation of the lantern.

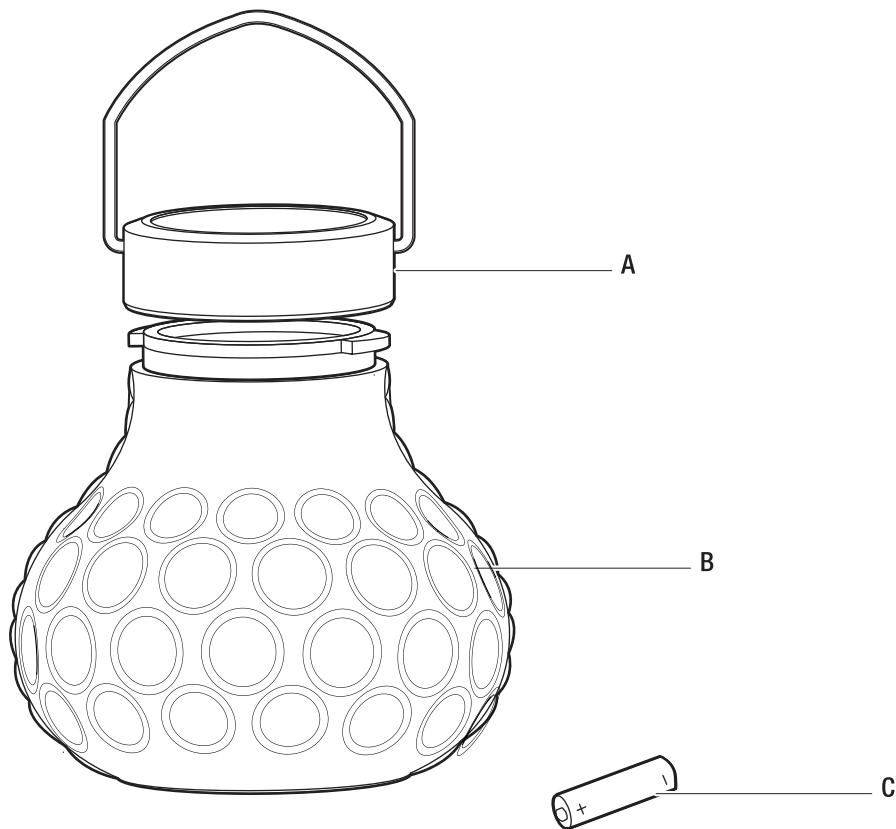


**NOTE:** The battery comes pre-charged but some discharge may happen during storage or transit.

## HOW SOLAR WORKS

During daylight hours, the sun will charge the battery in the solar panel and the light will turn on at dusk. Light output depends upon how much light the solar panel receives. Position the solar panel so that it receives maximum sunlight. If there are streetlights or other lighting that could shine directly into or near the solar panel, these lights may trigger the light sensor and the light may turn off. The solar panel must sense darkness to operate.

## PACKAGE CONTENTS



Part	Description	Quantity
A	Solar top (preassembled)	1
B	Glass lens	1
C	AA 1.2V 450 mAh NiMh rechargeable battery (preinstalled)	1

# Assembly

## 1 Preparing the solar panel for use

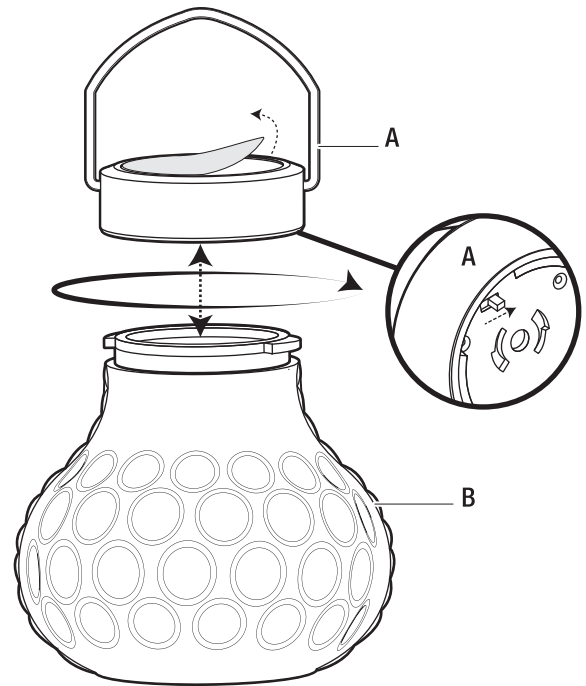


**NOTE:** To allow the battery to reach full capacity and perform correctly, pull out the plastic tab and place the solar light in full sunlight for the first 12 hours. Failure to do so can shorten the life of the battery or operation of the light. On cloudy or rainy days it may take several days for the battery to fully charge.



**NOTE:** To protect the solar light from damage, do not use force during assembly.

- Peel off the protective film from the top of the solar panel (A).
- Screw the solar top (A) off of the glass lens (B).
- Turn the switch underneath the solar top (A) to the On position.
- Reinstall the solar top (A) to the top of the glass lens (B).
- Place the solar lantern in your desired location and allow the battery to fully charge for 12 hours. Your solar light is then ready for use.



# Maintenance

## REPLACING THE BATTERY



**WARNING:** Only use NiMh rechargeable batteries with this solar lantern. Do not mix battery types.



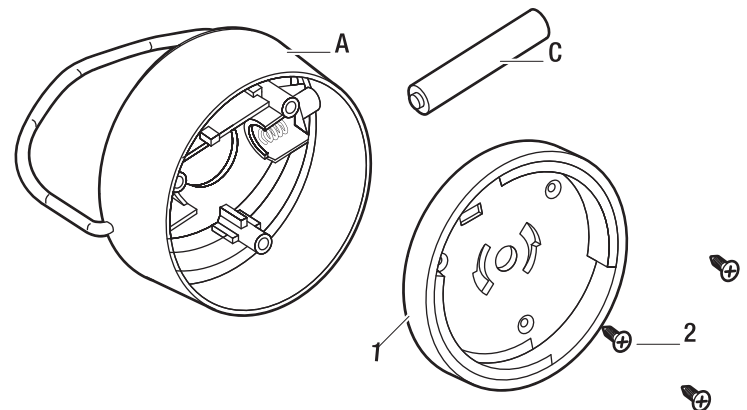
**WARNING:** Do not open, short circuit, or mutilate batteries as injury may occur. Batteries must be recycled or disposed of properly.



**CAUTION:** Do not use a smaller mAh battery as it will affect performance. Larger mAh batteries are acceptable. Ensure you have positioned the batteries with the correct polarity (+) and (-).



**NOTE:** Battery performance is affected by weather and temperature. Expect reduced performance in adverse conditions of cold, extreme cold, extreme heat plus humidity and dampness.



1. Twist off the solar top (A) from the glass lens (B) by turning the solar top (A) counterclockwise.
2. Slide the power switch underneath the solar top (A) to the Off position.
3. Remove the battery cover (1) by removing the three screws (2) with a Phillips screwdriver.
4. Remove the old battery (C).
5. Clean the battery contacts on the new battery and the solar top (A).
6. Replace with a new AAA 1.2V 450 mAh NiMh rechargeable battery.
7. Replace the battery cover (1) using the screws (2) and re-attach the solar top (A) to the glass lens (B) by twisting clockwise.

## Care and Cleaning

- It is recommended that solar lights not be used in freezing conditions. Monitor weather and take solar items indoors for storage as needed. Keep snow or other buildup off the solar panels so that the batteries are able to recharge.
- Remove batteries from equipment that will not be used for an extended period of time.

## Troubleshooting

Problem	Solution
The solar light does not come on.	Check that the switch underneath the solar panel is in the ON position.
	Check to ensure there are no obstructions over the top of the solar panel.
	Check to ensure that the battery(s) are installed correctly and there is nothing blocking the battery terminals from making contact.
	Check to ensure the solar panel is positioned to sense both daylight and night time. If bright lights shine near or into the solar panel, these lights may trigger the light sensor and the lights may turn off. Bright lights can act like daylight and keep the system from starting.
	Battery(s) may need to be changed and vary by use, temperature, weather conditions, and heat. Replace the batteries with the exact same type of rechargeable batteries.
	Ensure the batteries are fully charged. It is important to charge the batteries for 12 hours in full sun before usage. The switch on the solar panel must also be in the ON position. Cloudy or rainy days may require a longer charging time.
	In some cases, you may have to open the battery compartment and “seat” the batteries correctly between metal clips as some dislodging may occur during the shipment. Also ensure the correct polarity (+) and (-).
	Cloudy or rainy days generate far less charge on the solar panel and thus fewer hours of operation. Prolonged cloudy or rainy days can affect performance dramatically.

Questions, problems, missing parts? Before returning to the store,  
call Customer Service  
8 a.m. - 6 p.m., EST, Monday-Friday

**1-877-527-0313**

**HOMEDEPOT.COM**

Retain this manual for future use.