

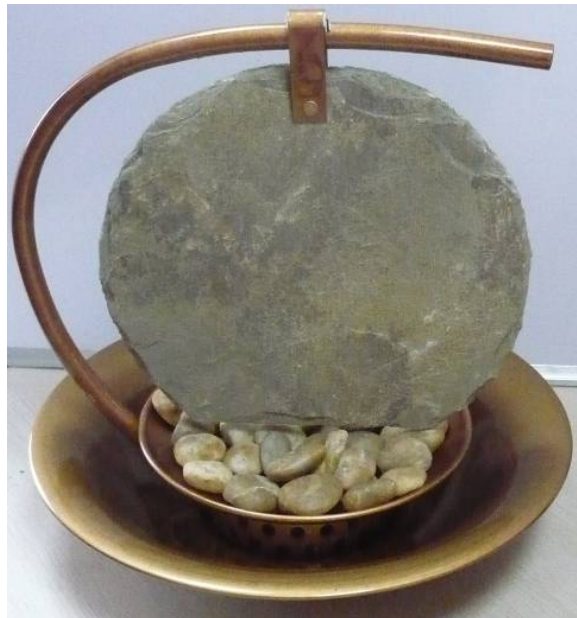


www.bluworldusa.com

WATER WONDERS®

Moonshadow

Instructions for Use

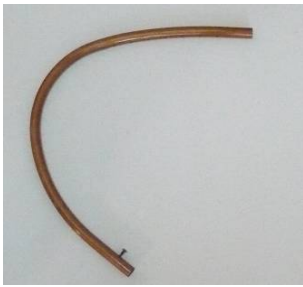


Parts List:

- A. Water Dispenser
- B. Pump with 10W Finger-light
- C. Bowl
- D. Support Ring
- E. Rock Dish
- F. Velcro Grip Strips
- G. Rocks
- H. Slate Slab and Support Strap
- I. Plastic Pipe

No Tools Necessary

A



B



C



D



E



F



G



H



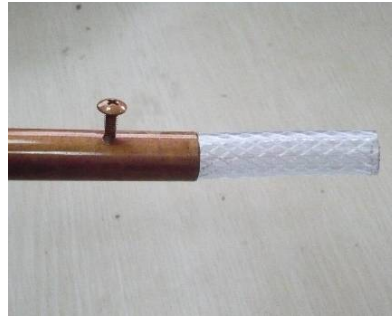
I



1. Remove packaging materials and parts from box and lay them out for ease of reference.
2. Connect the Plastic Pipe (I) into Water Dispenser (A), see Fig. 2.A - 2.B.



2.A



2.B

3. Slide the Plastic Pipe (I) over the small pipe in the Bowl (C), as shown in the illustrations below from illustrations 3.A - 3.B.



3.A



3.B

4. Locate Pump (B) and make sure that it is preset to its highest flow setting.
5. Locate the Pump (B). Connect the Pump (B) to the other side of the Plastic Pipe (I) as shown in Fig 5.A. Wrap the Finger-light power wire around the pump and mount the Finger-light (B) to the mounting clip as shown in Fig 5.B. Place the Ring (D) into the center of the Bowl (C). Place the assembled unit into the center of the Bowl (C) as shown in Fig 5.C. Make sure that the wire from the Pump (B) is placed through the notch in the support Ring (D) and continues outside the Bowl (C) so that the Transformer (B) will be outside the Bowl (C).



5.A



5.B



5.C

6. Locate the Slate Slab (H) and Velcro Grip Strips (F). Remove the adhesive paper from Velcro Grip Strips (F) and apply to the underside of the Slate Strap (H) as well as to the Water Disperser Pipe (A) as shown in figures 6.A to 6.D. Now locate the Rocks (G) and position them onto the Rock Dish (E). Place smaller rocks on the rock dish around the larger rocks and under the slate as shown in figure 6.E. Fill the fountain bowl with water (distilled or purified is recommended) to a level ¼” below the rock dish.



6.A



6.B



6.C



6.D



6.E

7. You are now ready to plug in the fountain and enjoy the soft, soothing and relaxing sounds of nature in your home or office. Control the splashing affect and the diffusion of light produced by the Finger-light (B) by rearranging the Rocks (G) under the hanging Slate Slab (H).

Maintenance

Check the water in your fountain daily for a water level of $\frac{1}{4}$ " – $\frac{3}{4}$ " from the top of the reservoir pan. Water will evaporate from the fountain and adversely affect the performance of the water pump, which **MUST** be completely submerged for proper operation and longevity. **NEVER ALLOW YOUR WATER PUMP TO OPERATE DRY!**

Our water pumps are designed to provide exceptional pumping capacity with minimal maintenance. Please see the instructions below for important maintenance information:

To clean your pump, remove the intake pre-chamber as shown in the picture to the right. Clean all parts thoroughly then reassemble and reinstall in your fountain.



- Pump is noisy: Check that the pump's output nozzle is securely inserted into the fountain's intake tube as forced water escaping the connection may cause unwanted air bubble noise. Make sure the pump is completely submerged. To access the pump, lift rock dish from the support ring.
- Fountain splashes: Reposition rocks around the slate water stream to minimize splashing. Make sure pipe and coupling connection is secure and that the water pump flow adjustment control is not positioned at its highest setting.
- Water does not flow: Make sure pump output nozzle is inserted into the rubber intake tube, pump is completely submerged in water and the cord is plugged in to a working receptacle. Check to see that flow adjustment control is positioned to a middle setting or above.
- Water does not flow properly onto slate tile: Make sure the pipe is not situated at an angle above the fountain bowl. Adjust and/or slide the slate tile along the pipe until positioned completely under the water disperser outlet holes so that the tile's edges hang in line with the pipe.
- Adjust the Pump Flow Control setting.

When replacing the bulb please do not handle it with your fingers as the oil from your fingers can damage the bulb. Be sure to grasp the bulb with a soft cloth when handling it as shown below. The bulb must also be positioned in a place where water is constantly hitting it otherwise it will stop working.



Warranty

Bluworld product is warranted against defects that render it unfit for its reasonably intended use. This Warranty is not extended to cover use of the product for a purpose other than as intended, and if the product is used unreasonably, or for purposes other than as intended, or if it is altered, modified or repaired by a party other than Bluworld, then the Warranty shall be null and void. The Warranty is in effect for a period of six months beginning from the date of sale to the original retail purchaser and the rights under this Warranty are limited to the original retail purchaser. Bluworld will, upon written notification thereof, take commercially reasonable steps to correct such defects (see "manufacturers defects below"), at Bluworld's sole option, by suitable repair, replacement, or refund. Bluworld will not be responsible for the installation, labor or any other costs or expenses related to the re-installation of a warranted part, and such expenses are not covered by this warranty. THIS LIMITED WARRANTY IS EXCLUSIVE AND IN LIEU OF ANY IMPLIED WARRANTY OF MERCHANTABILITY, FITNESS FOR A PARTICULAR PURPOSE, OR OTHER WARRANTY OF QUALITY, WHETHER EXPRESS OR IMPLIED, EXCEPT FOR THE WARRANTY OF TITLE AGAINST PATENT INFRINGEMENT. Corrections of nonconformities, in the manner and for the period of time provided above, shall constitute fulfillment of all liabilities of Bluworld to any Dealer with respect to the goods, whether based on contract, negligence, and strict tort or otherwise. Bluworld contract sales personnel, including but not limited to authorized Dealers and Resellers (collectively, "Sales Personnel"), are not authorized to make warranties about Bluworld merchandise. ORAL STATEMENTS DO NOT CONSTITUTE WARRANTIES. Oral statements made by Bluworld employees or other Sales Personnel shall not be relied upon by a Dealer and shall not become part of any contract for sale. The entire sales contract between a Dealer and Bluworld will be set forth in the invoice and/or accompanying or reference documents provided by Bluworld to the Dealer or Sales Personnel. No other warranties are given beyond those set forth in those documents. Please be aware that you may have valuable rights under the state law in which you reside. Some of the provisions of this Warranty may be prohibited by your state law in which case your state law will govern and control. Some states do not allow the exclusion or limitation of incidental or consequential damages, so the above limitation or exclusion may not apply to you. Some states do not allow limitations on how long an implied warranty lasts, so the above limitations may not apply to you. This Warranty gives you specific legal rights, and you may also have other rights which vary from state to state.

Our products are warranted for a period of six months against defects in finish, pumps and other product performance issues. Light bulbs are not warranted. Our experience has shown that in practically 100% of incidents that any defect is apparent within a week of installation and use. Appearance defects should be noticed upon unpacking the fountain. We have found that finishes have 'failed' due to poor maintenance, local water conditions with minerals affecting the finish, attempts to clean with harsh chemicals or abrasive pads being used. Performance of water flow, spitting, and other 'leaks', are usually caused by debris getting into the fountain, buildup of minerals, algae from poor water or lack of maintenance. Pumps can also fail due to water levels not being maintained in the reservoir and this is not covered by the warranty.

Manufacturers Defect defined - A distinct and obvious flaw in the manufacturing of the product that inhibits the product's ability to function properly or a distinct and obvious flaw in the workmanship of the product that affects its physical appearance. Bluworld water features are manufactured under generally accepted manufacturing techniques as recognized by the International Organization of Standardization. Our products are hand made and hand finished thus minor scratches in materials within accepted ranges are not considered defects.

Slate- Many of our products contain natural slate. Slate can vary to a large degree and that individuality is what is considered to be unique and inherent to the beauty of the natural product as no two are exactly alike. Photos in our marketing materials are representative of our slate products but should not be relied on to duplicate the photo. We use natural mined slate in our products. Personal taste in the appearance of slate is not considered a reason for a return.