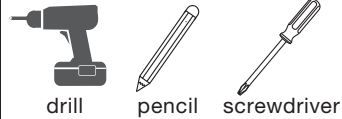


# Easy Install Drapery Rod Instructions

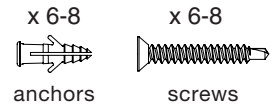
For safety, please use a step ladder.

To view an instructional video, visit:  
<http://maytex.com/easyinstall.php>

## You will need:



## Components included:



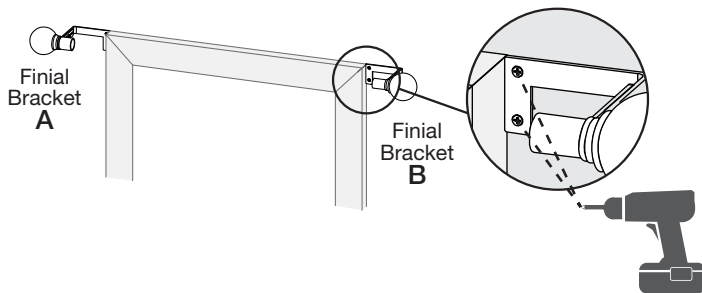
## Please Read All Installation Tips On Next Page Before Beginning.

**Before Installation:** Unscrew rods from end finial brackets A and B.



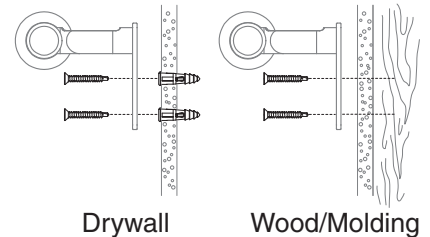
## Standard Installation:

1. Line up finial bracket A at top left side of molding. Screw the finial bracket in the wall using a drill. Repeat with finial bracket B on top right side of molding.



If you want to hang the rod at a different height or projection, see the next page.

**For drilling into Drywall**, pre-drill a 3/16 in. (0.47 cm) hole and install screws using the included Plastic Drywall Anchors.

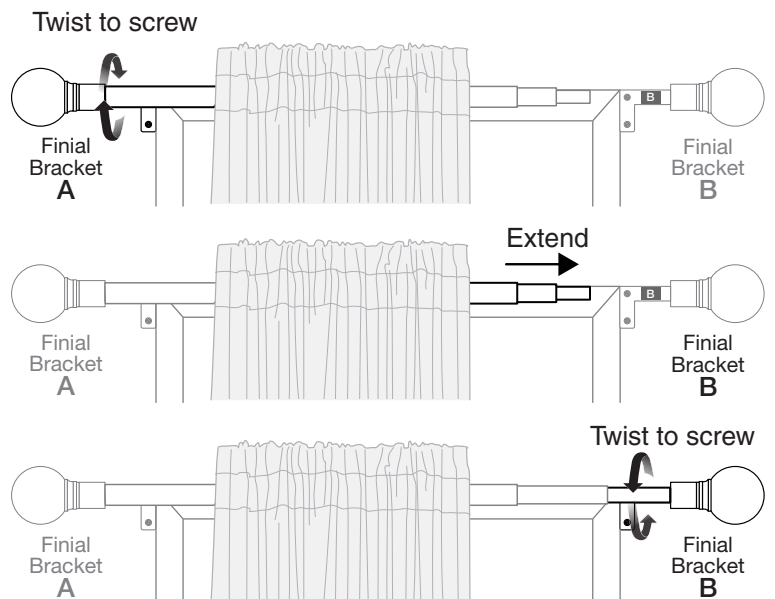


Because of the position of the brackets relative to the window, you will usually be screwing into a wooden stud and will not need the plastic anchors.

2. With window curtains on the rod, screw the thicker tube into finial bracket A. Extend the rods to the right to screw thinnest tube into finial bracket B.

**IF YOU NEED MORE LENGTH**, unlock middle tube as indicated on directional sticker and extend.

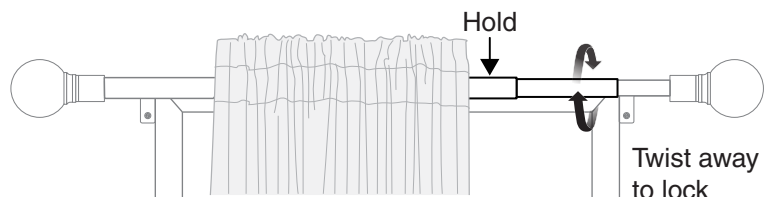
**(DO NOT EXTEND BEYOND THE YELLOW 'STOP!' LINE.)**



3. While holding the thickest tube, twist the middle tube away from you to lock it into place (as indicated by directional sticker). Twist until tight.

Space curtains until desired look is achieved.

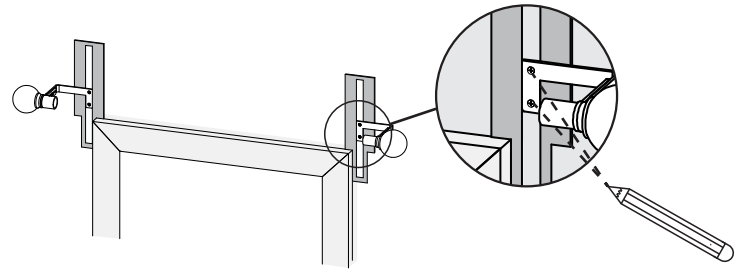
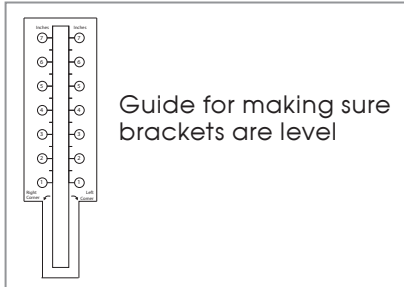
**Installation Complete!**



# Installation Tips For Easy Install Drapery Rod

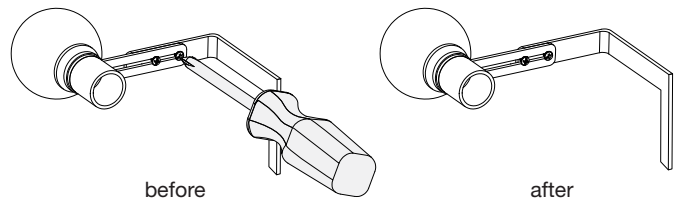
## To Hang Above Your Window:

Using the included guide, mark the drilling location for the two screws on each finial bracket. Finial bracket A should be on your left as you face the window. Secure finial brackets with screws to wall using a drill.



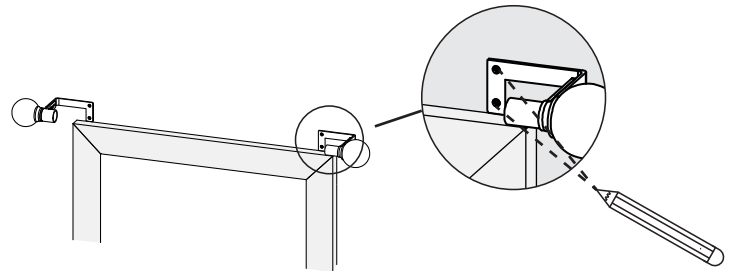
## To Adjust The Projection:

Using a screwdriver, loosen the 2 screws on the inside of the finial bracket (**Do not remove screws**). Slide finial bracket to desired projection and retighten screws fully. Repeat for other finial bracket.



## If There Is Not Enough Space Between Window Opening And Wall:

When installing, if there is not enough space between opening and wall, mount brackets above window opening. Use the bottom of bracket for alignment.



## If Window Opening is 55in or Wider:

If your window opening is 55 in (140 cm) or wider, it is recommended that the included center rod support is used.

