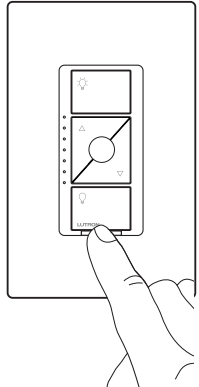


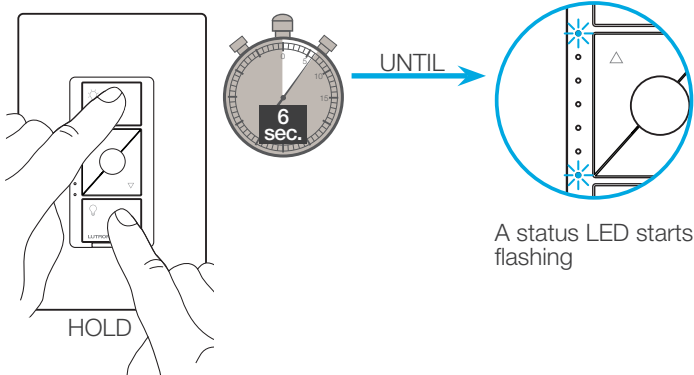
In-wall ELV+ dimmer

Adjusting for Load Types -
Configurable between ELV and MLV load types

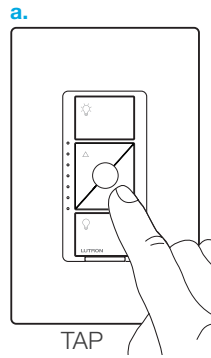
1 Pull out the FASS Switch and then push back in



2 Enter

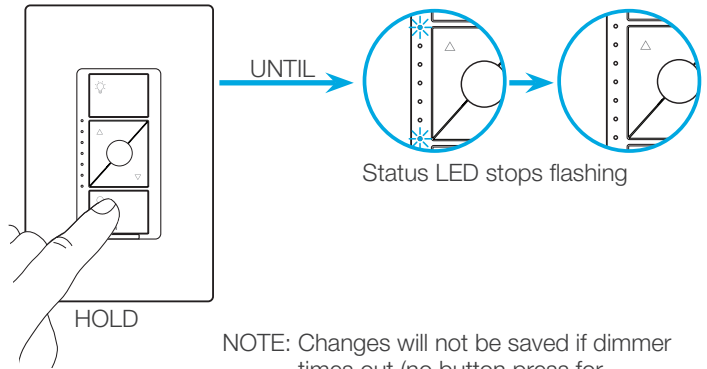


3 Adjust



NOTE: Top LED Blinking - Forward Phase (MLV)
Bottom LED Blinking - Reverse Phase (ELV)

4 Save



NOTE: Changes will not be saved if dimmer times out (no button press for 1 minute) or if power is turned off.