

HTB TOGGLER® Bolt 3.3.16

3.3.16.1 Product Description

The Hilti HTB TOGGLER® Bolt fastening system consists of a metal channel threaded to accept a machine bolt, and unique plastic legs and locking cap for fastening in a wide range of hollow-wall materials.

Product Features

- Unique installation legs and locking cap facilitate fastening in wide range of drywall and hollow wall materials up to 2-1/4" thick
- One piece metal channel provides greater holding power
- Plastic pull ring assists in setting lock cap
- Anchor is adjustable for various base material thicknesses providing easier installation as well as minimizing inventory investment
- Remains mounted in the wall without screw for convenient handling, installation and reuse
- Available in stainless steel and carbon steel for different environments
- Comprehensive offering with and without machine screws

- 3.3.16.1 Product Description
- 3.3.16.2 Material Specifications
- 3.3.16.3 Technical Data
- 3.3.16.4 Installation Instructions
- 3.3.16.5 Ordering Information

3.3.16.2 Material Specifications

Zinc plated metal channel material meets the requirements for AISI 1010 steel

3.3.16.3 Technical Data

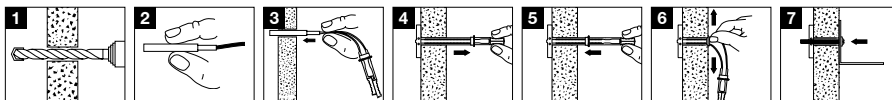
HTB TOGGLER® Bolt Allowable Loads¹

Toggler Bolt Size in.	Hole Dia. in.	1/2" Drywall		5/8" Drywall		Hollow Concrete Block	
		Tension lb (N)	Shear lb (N)	Tension lb (N)	Shear lb (N)	Tension lb (N)	Shear lb (N)
3/16	1/2	30 (133)	70 (311)	45 (200)	95 (423)	140 (623)	160 (712)
1/4	1/2	35 (155)	85 (378)	50 (222)	105 (467)	160 (712)	240 (1068)
3/8	3/4	35 (155)	70 (311)	50 (222)	105 (467)	200 (890)	380 (1690)
1/2	3/4	35 (155)	85 (378)	50 (222)	110 (489)	240 (1068)	420 (1868)

¹ Based on using a safety factor of 4.0.

TOGGLER® is the registered trademark of Mechanical Plastics Corp.

3.3.16.4 Installation Instructions



- 1 Drill correct size hole into wall cavity.
- 2 Position the metal channel parallel with the plastic legs.
- 3 Insert the metal channel through the drilled hole into the wall cavity.
- 4 Pull the metal channel firmly against the inner wall cavity by tugging the plastic pull ring.
- 5 Slide the plastic cap forward along the legs until it is seated flush to the work surface.
- 6 Snap the plastic legs off flush at the plastic cap by pushing outward.
- 7 Secure the item to be fastened with the proper size machine screw and screw driver. NOTE: Maximum torque on screw or rod is 5 ft-lb.

3.3.16.5 Ordering Information

Description	Machine Screw Dia. (In.)	Machine Screw Length (In.)	Bit Dia. (in.) ¹	Box Qty
HTB TOGGLER® Bolt 3/16" with SRH screw ¹	3/16	2-1/2	1/2	100
HTB TOGGLER® Bolt 3/16" with PFH screw ²	3/16	2-1/2	1/2	100
HTB TOGGLER® Bolt 3/16" w/o screw ³	3/16	-	1/2	100
HTB TOGGLER® Bolt 1/4" with SRH screw ¹	1/4	2-1/2	1/2	100
HTB TOGGLER® Bolt 1/4" with PFH screw ²	1/4	2-1/2	1/2	100
HTB TOGGLER® Bolt 1/4" w/o screw ³	1/4	-	1/2	100
HTB TOGGLER® Bolt 3/8" with SRH screw ¹	3/8	2-1/2	3/4	25
HTB TOGGLER® Bolt 3/8" w/o screw ³	3/8	-	3/4	25
HTB TOGGLER® Bolt 1/2" with SRH screw ¹	1/2	2-1/2	3/4	25
HTB TOGGLER® Bolt 1/2" w/o screw ³	1/2	-	3/4	25

1 Round Head (Combination Slotted/Phillips)

2 Phillips Flat Head

3 Machine screws not included

TOGGLER® is the registered trademark of Mechanical Plastics Corp.



3/16" & 1/4"

3/8" & 1/2"