

Parts Manual

Mfg. No: 1696847-00
1022EX, B&S 9.5 Gross TP 22" Single

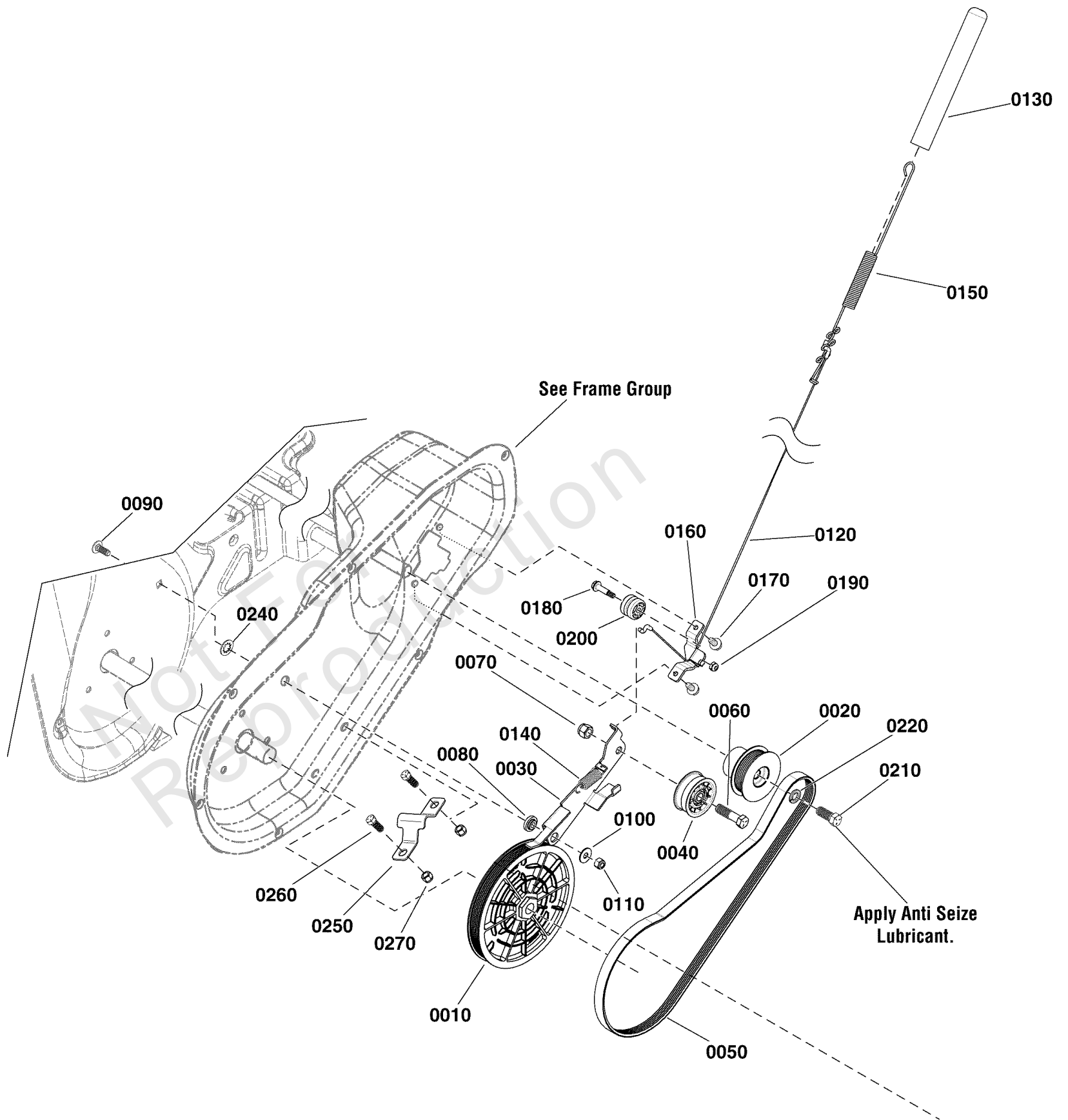
Model Components	Page
Auger Drive Group.....	4
Auger Group.....	6
Chute Rotation Group.....	8
Engine Group - 9.5 & 11.5GTP.....	10
Frame Group.....	12
Handles & Controls Group.....	14
Wheel & Body Covering Group.....	16
Torque Specification Chart.....	18

Not For
Reproduction

Auger Drive Group

Note: Unless noted otherwise, use the standard torque specifications

Mfg. No: 1696847-00



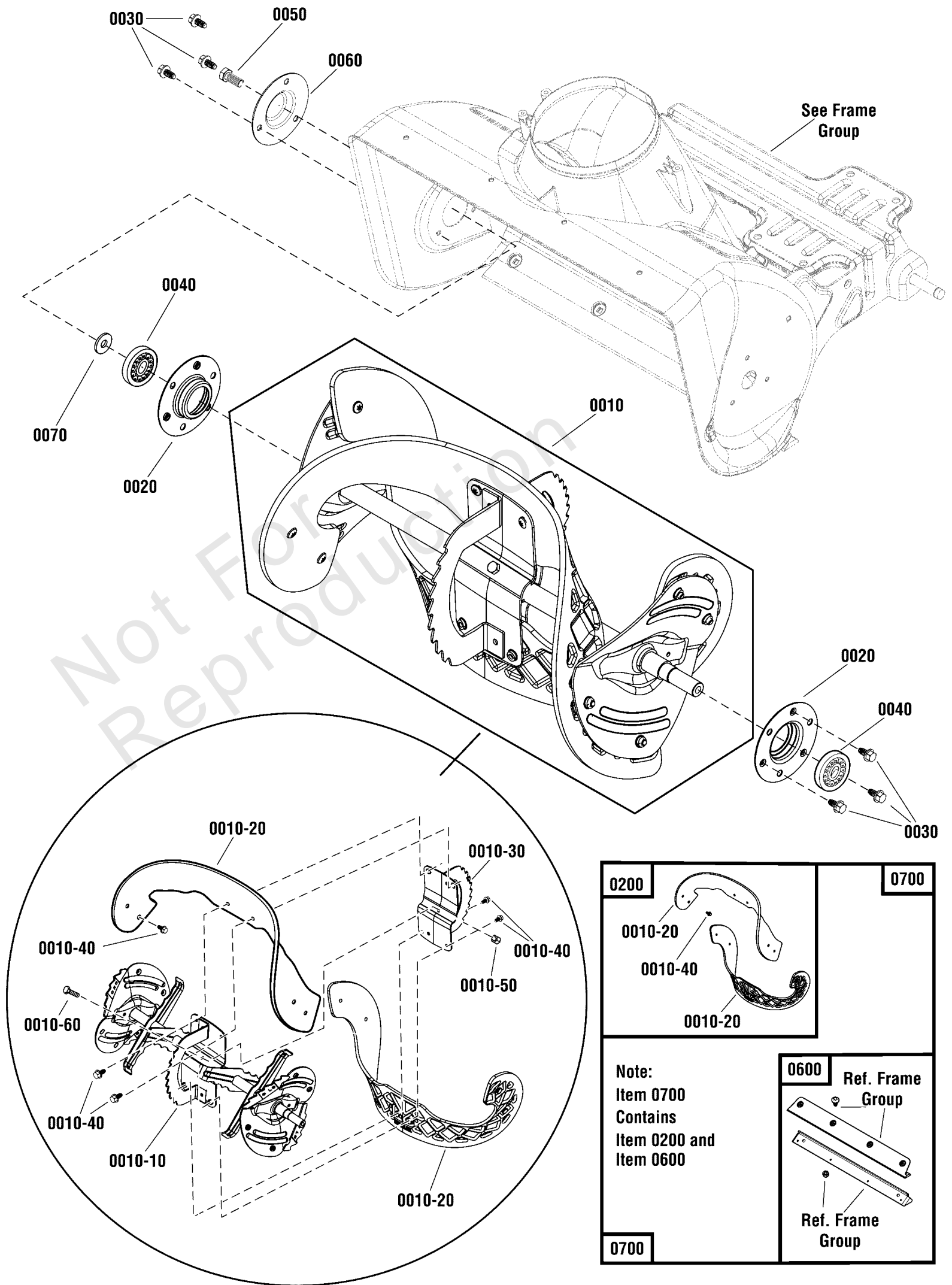
Auger Drive Group

REF NO	PART NO	QTY	DESCRIPTION
0010	771019	1	PULLEY, Driven
0020	1739179YP	1	PULLEY, Driver
0030	771018	1	ARM, Idler, Drive
0030	1739526YP	1	ARM, Idler, Drive
0040	1502120MA	1	IDLER, Plastic Ball Bearing
0050	1739338YP	1	BELT, Drive
0060	703406	1	CAPSCREW, Hex Head, 3/8-16 X 1 1/2, GR5
0070	703117	1	NUT, Hex, Nylock, 3/8-16, GR5
0080	1739709YP	1	SPACER, Idler Arm
0090	1931318SM	1	BOLT, Carriage, Short Neck, 1/4-20 x 7/8 G5
0100	7091253YP	1	WASHER, Flat, .281 X 3/4 x 1/2
0110	703232	1	NUT, Hex Lock, 1/4-20, ESNA
0120	727331	1	CABLE, Front Drive
0130	1739935YP	1	BOOT, Clutch Spring
0140	1750226YP	1	SPRING, Idler
0150	1750315YP	1	SPRING, Extension
0160	1750329YP	1	BRACKET, Cable Guide
0170	704130	2	SCREW, Hex Head, 1/4-20 X 1/2
0180	1750594YP	1	CAPSCREW, Hex Shoulder, 1/4 x 3/4
0190	703937	1	NUT, Ny Lock, #10-32
0200	579860MA	1	SPOOL CABLE, Auger Control
0210	001X20MA	1	CAPSCREW, Hex Head, 3/8-24 x 1
0220	703454	1	LOCKWASHER, Spring, 3/8
0240	703826	1	NUT, Nylock, 5/16-18
0250	771016	1	GUIDE, Belt -(Includes Ref .No. 0260 & 0270)
0260	703338	2	CAPSCREW, Hex Head, 1/4-20 x 5/8, GR5
0270	703232	2	NUT, Hex Lock, 1/4-20, ESNA

Auger Group

Note: Unless noted otherwise, use the standard torque specifications

Mfg. No: 1696847-00



Auger Group

REF NO	PART NO	QTY	DESCRIPTION
0010	1687814	1	AUGER ASSEMBLY, Complete -(Incl. Ref. Nos. 0010-10, 0010-20, 0010-30, 0010-40, 0010-50 & 0010-60)
0010-10		1	* AUGER SHAFT ASSEMBLY
0010-20		2	** FLIGHT, Auger -(Included with Ref. No. 0200)
0010-30		2	* PLATE, Auger, Center
0010-40	770003	12	SCREW, Pan Head Torx, 1/4-20 x 3/4 -(Included with Ref. No. 0200)
0010-50	703232	1	NUT, Nylock, 1/4-20
0010-60	703234	1	CAPSCREW, Hex Head, 1/4-20 X 1 1/2, G5
0020	1739228YP	2	RETAINER, Bearing
0030	704130	6	SCREW, Hex Washer Head, Trilob, 1/4-20 x 1/2
0040	1705897SM	2	BEARING, Ball, 11/16 x 1-9/16 x 15/32
0050	704287	1	CAPSCREW, Hex Head, 5/16-18 x 3/4
0060	1739229AYP	1	CAP, BEARING
0070	703118	1	WASHER, Flat, 7/8 x 21/64
0200	1687489YP	1	KIT, Auger Flight -(Incl. Ref. Nos. 0030 & 0010-40)
0600	1687805	1	KIT, Scraper Bar -(Reference Frame group)
0700	1687806	1	KIT, Scraper Bar & Flight -(Incl. Ref. Nos. 0200 & 0600)

Not For
Reproduction

Footnotes:

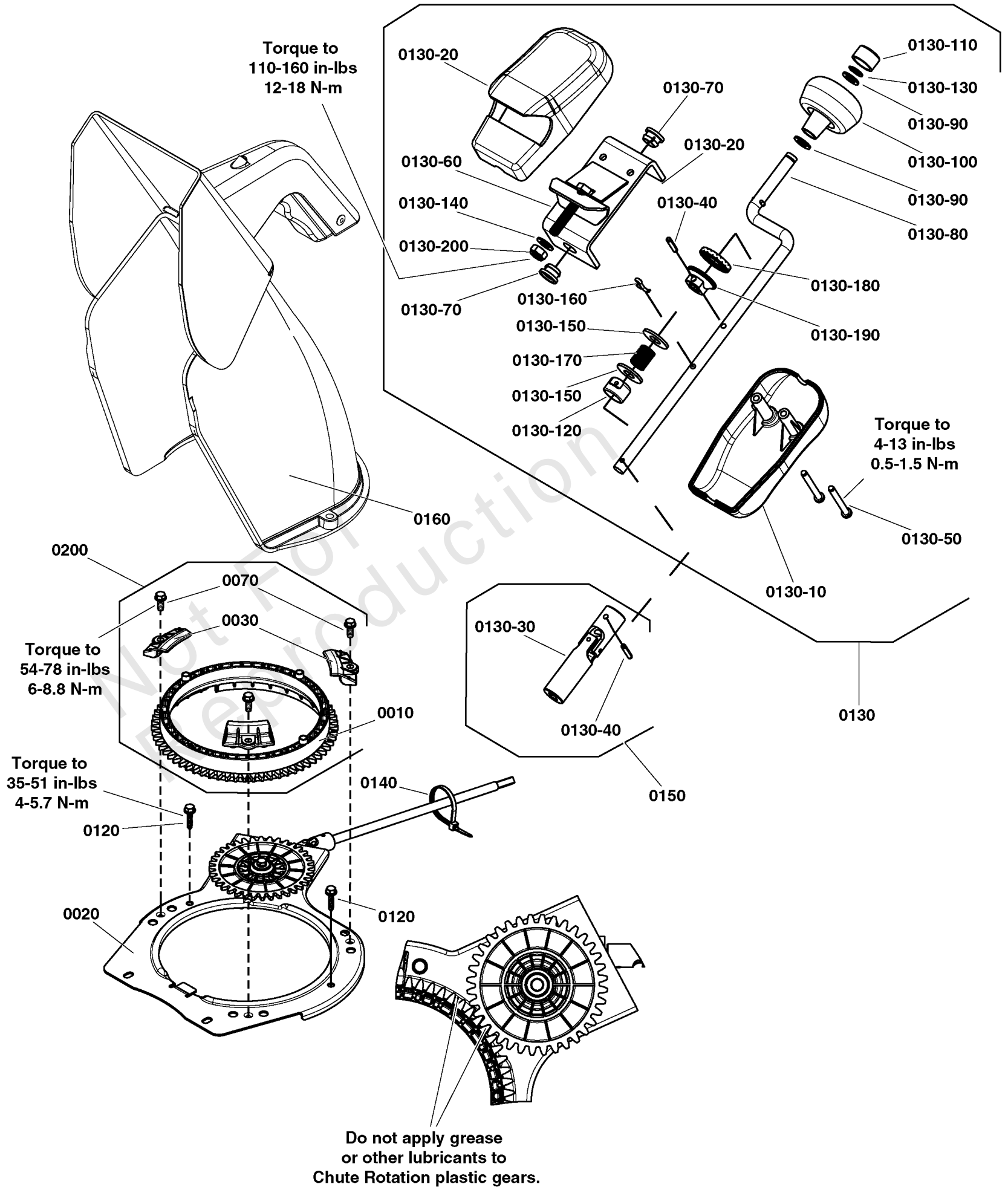
** Not a servicable part, order Auger Flight Kit.

* Not a servicable part, order complete Auger Assembly.

Chute Rotation Group

Note: Unless noted otherwise, use the standard torque specifications

Mfg. No: 1696847-00



Chute Rotation Group

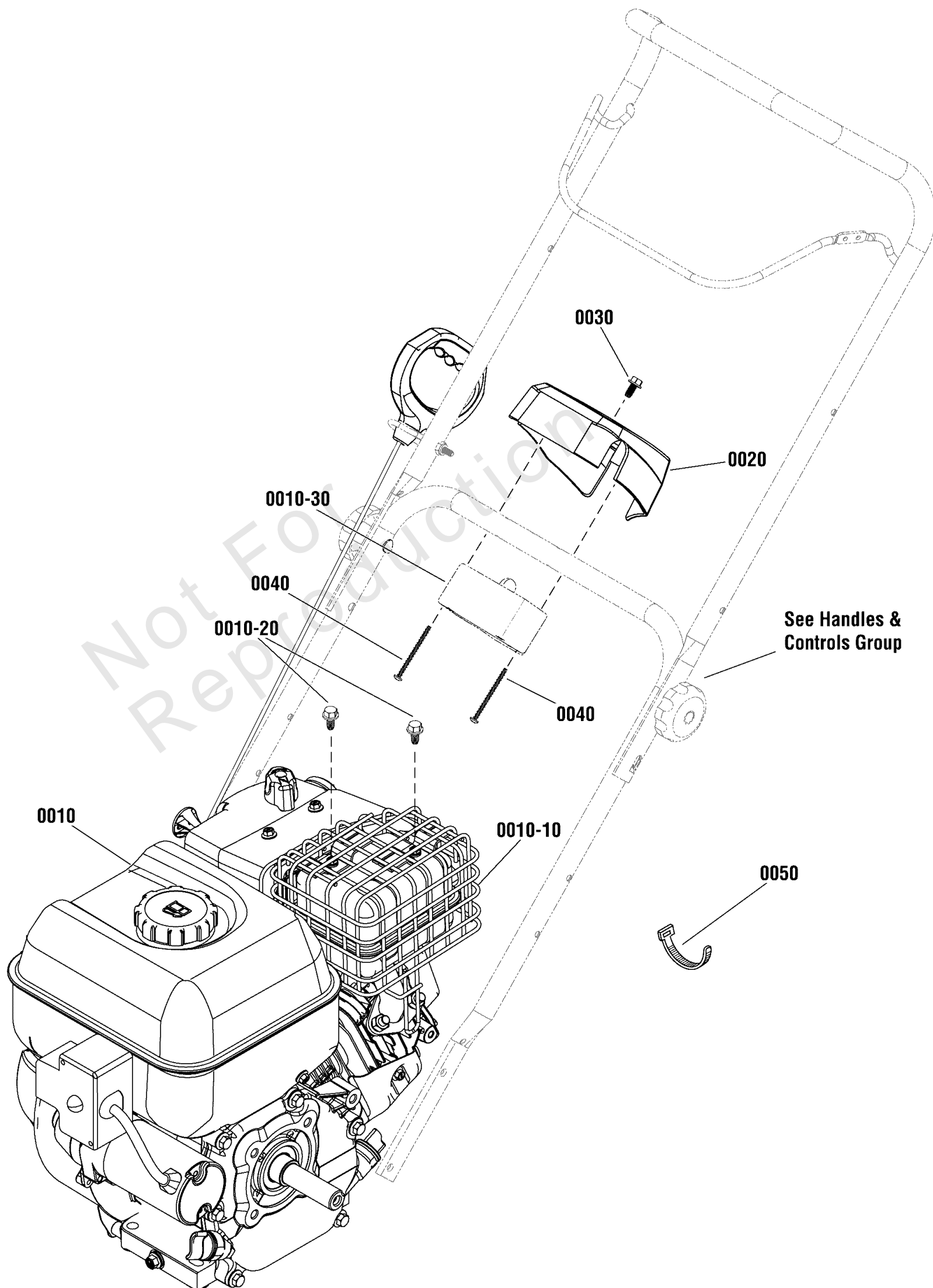
REF NO	PART NO	QTY	DESCRIPTION
0010	706509	1	GEAR
0020	770634	1	REMOTE CHUTE ASSEMBLY, Plate
0030	706511	3	RETAINER
0070	703054	3	SCREW, 1/4-20 x 5/8, Hex Washer Head, Thread Roll, Zinc/Clear
0120	706516	1	SCREW, Hi-Low, 1/4-15 x 1
0130	770633	1	REMOTE CHUTE ASSEMBLY, Handle
0140	1740650MA	1	TIE, Cable
0150	770635	1	UNIVERSAL JOINT
0160	709756	1	CHUTE ASSEMBLY, Quick
0200	709922	1	KIT, CHUTE GEAR

Not For
Reproduction

Engine Group - 9.5 & 11.5GTP

Note: Unless noted otherwise, use the standard torque specifications

Mfg. No: 1696847-00



Engine Group - 9.5 & 11.5GTP

REF NO	PART NO	QTY	DESCRIPTION
0010	13A132-0003-F1	1	* ENGINE, Briggs & Stratton, 9.5 GTP, Snow Series -(Engine Model: 13A132-0003-F1)
0010	13A135-0002-F1	1	* ENGINE, Briggs & Stratton, 9.5 GTP, Snow Series -(Engine Model: 13A135-0002-F1)
0010	15C107-0014-F8	1	* ENGINE, Briggs & Stratton, 11.5 GTP, 1150 Series -(Engine Model: 15C107-0014-F8)
0010-10	591443	1	* GUARD, Muffler -(Used on 9.5GTP Models)
0010-10	799028	1	* GUARD, Muffler -(Used on 11.5GTP Models)
0010-20	590850	2	SCREW -(Used on 9.5GTP Models)
0010-20	699854	3	* SCREW, Muffler Guard -(Used on 11.5GTP Models)
0010-30		1	* STARTER, 110V
0020	1754873YP	1	HOUSING, Starter, 110V -(Used on 9.5GTP Electric Start Models)
0020	1750032YP	1	HOUSING, Starter, 110V -(Used on 11.5GTP Electric Start Models)
0030	704130	1	SCREW, Taptite, 1/4-20 x 1/2
0040	703066	2	SCREW, Pan Head Phillips, Plast., 8-16 x 2 -(Used on 9.5GTP Electric Start Models)
0040	1750593YP	2	SCREW, Pan Head Phillips, Plast., 8-16 x 2 -(Used on 11.5GTP Electric Start Models)
0050	7024641YP	4	WIRE TIE, 5.5" L

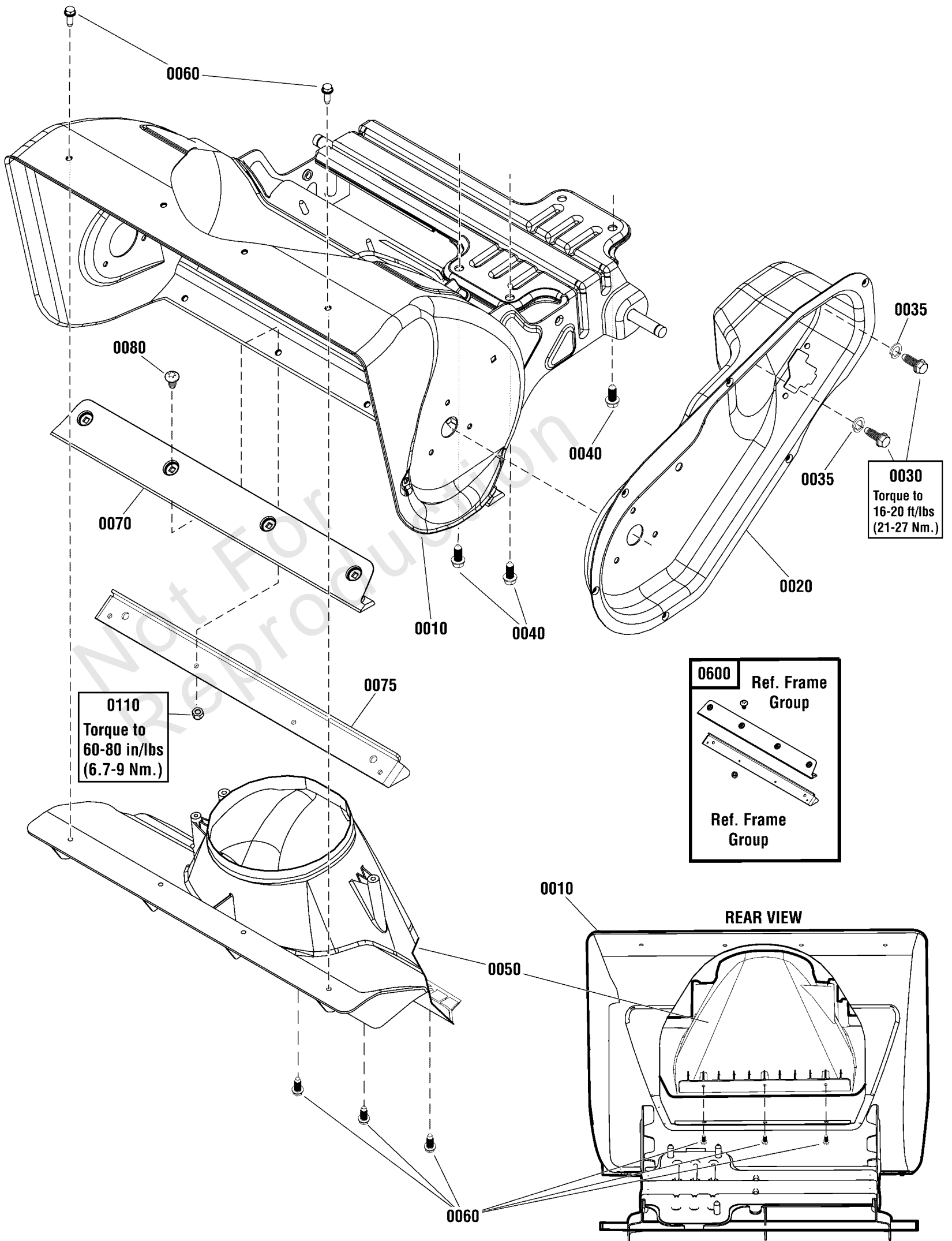
Footnotes:

Note:* To verify your specific engine model, please reference the ID Tag located on your engine. See your local Briggs & Stratton distributor for parts and service.

Frame Group

Note: Unless noted otherwise, use the standard torque specifications

Mfg. No: 1696847-00



Frame Group

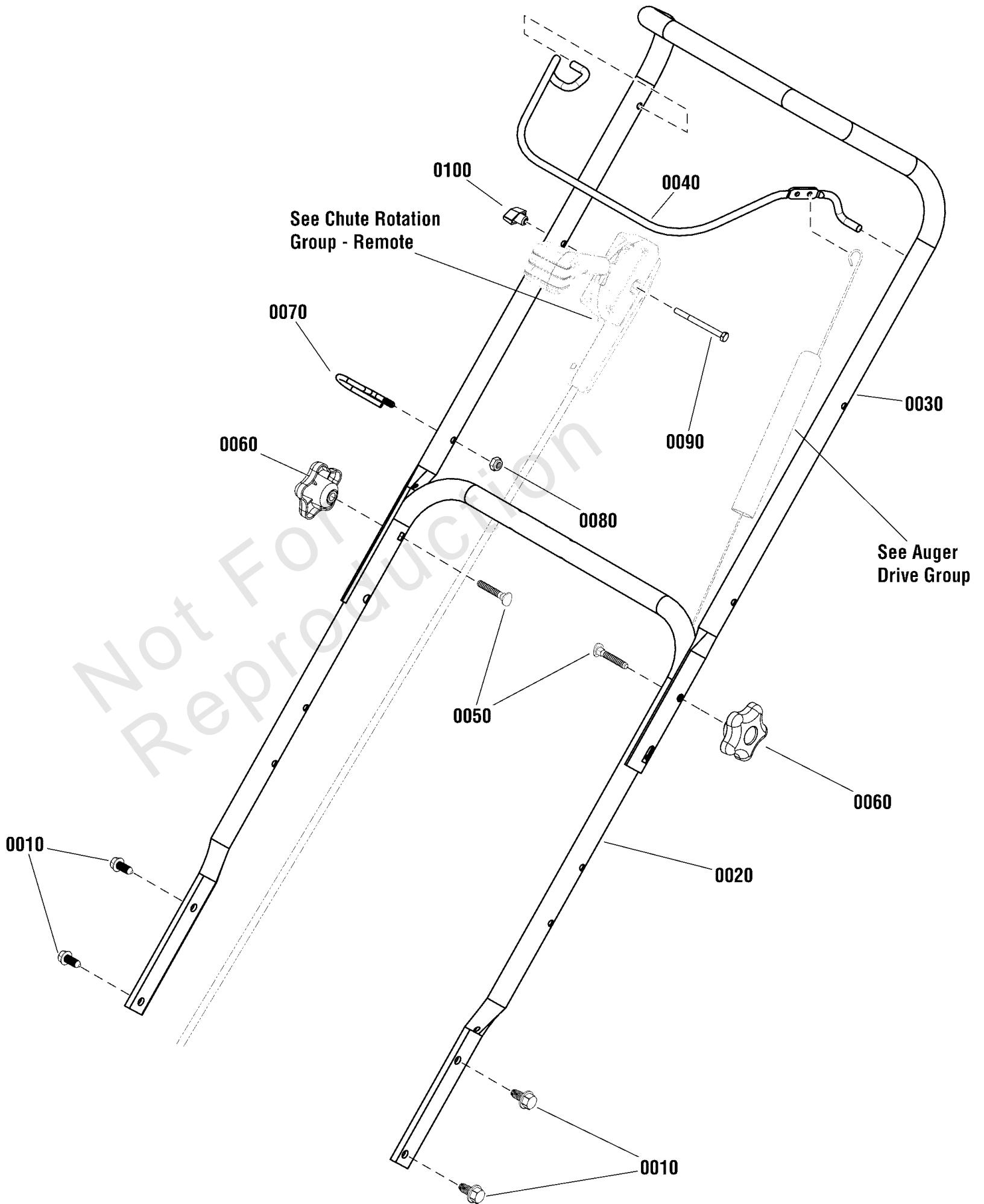
REF NO	PART NO	QTY	DESCRIPTION
0010	1756280AYP	1	FRAME ASSEMBLY
0020	709751	1	HOUSING, Drive
0030	1752876YP	2	CAPSCREW, Hex Head, 5/16-24 x 5/8
0035	703116	2	WASHER, Lock, 5/16
0040	2828635SM	3	SCREW, Hex Washer Head, Taptite, 3/8-16 x 1-1/4
0050	707849	1	CHIMNEY
0060	7091081SM	5	SCREW, Hi-Low, 1/4-15 x 3/4
0070		1	SCRAPER BAR -(Included with Ref. No. 0600)
0075	706358	1	SUPPORT, Scraper Blade -(Included with Ref. No. 0600)
0080	5025299X5YP	4	SCREW, Allen Head, 1/4-20 x 5/8 -(Included with Ref. No. 0600)
0110	1752935YP	4	NUT, Hex Lock, Nylon, 1/4-20 -(Included with Ref. No. 0600)
0600	1687805	1	KIT, Scraper Bar -(Includes Ref. Nos. 0070, 0075, 0080, 0110, Auger Flights & Hardware)

Not For
Reproduction

Handles & Controls Group

Note: Unless noted otherwise, use the standard torque specifications

Mfg. No: 1696847-00



Handles & Controls Group

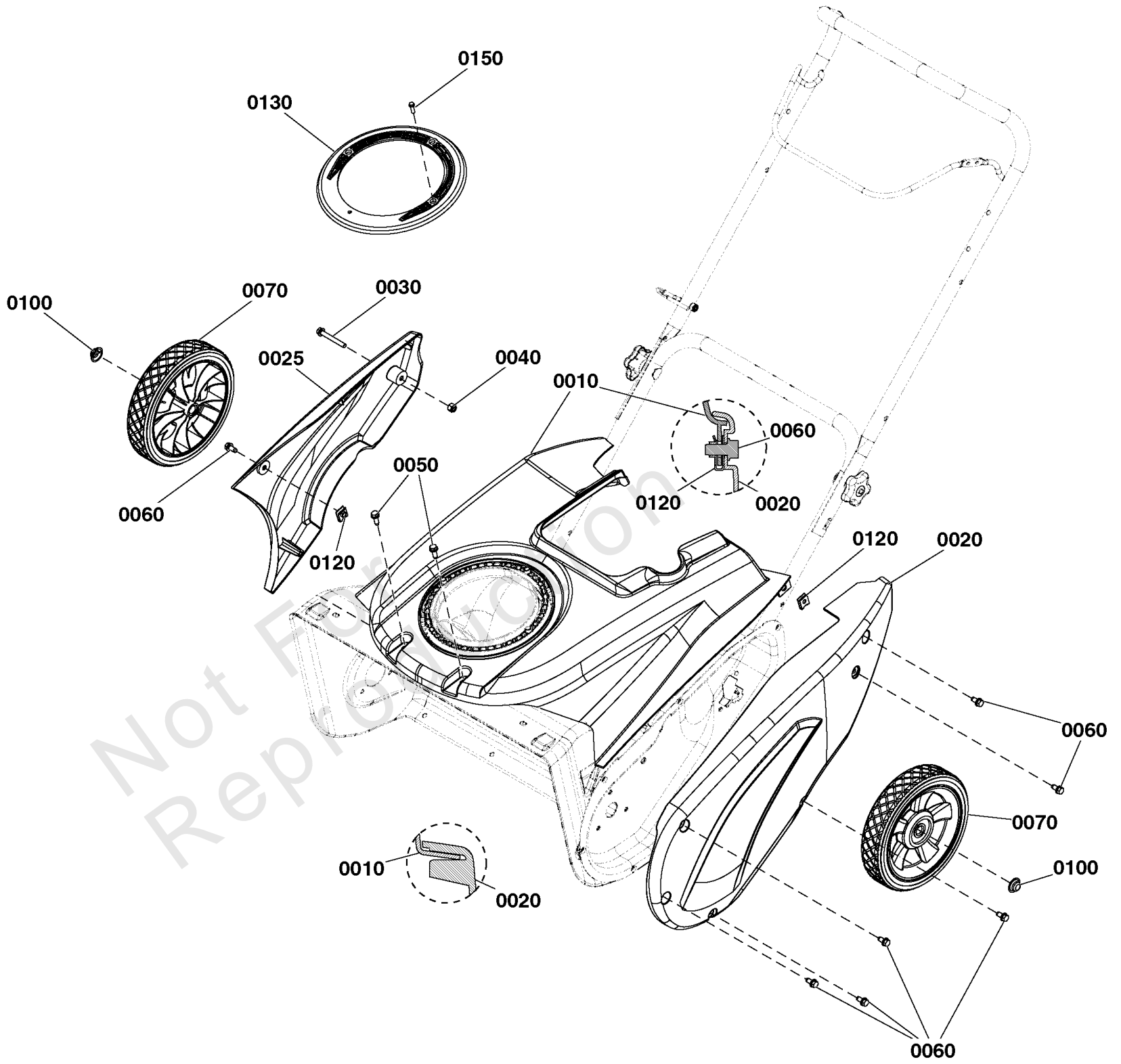
REF NO	PART NO	QTY	DESCRIPTION
0010	703949	4	SCREW, Hex Washer Head, Taptite, 5/16-18 x 5/8
0020	770051	1	HANDLEBAR, Lower
0030	705750	1	HANDLEBAR, Upper
0040	1739361BNYP	1	BAIL, Engine Stop
0050	703059	2	BOLT, Carriage, Curved Head, 5/16 x 2, G2
0060	7105085YP	2	KNOB, Handle
0070	1739389YP	1	GUIDE, Rope
0080	703232	1	NUT, 1/4
0090	704208	1	CAPSCREW, Hex Head, 1/4-20 x 3, G5 -(Remote Models Only)
0100	194289GS	1	KNOB, Handle -(Remote Models Only)

Not For
Reproduction

Wheel & Body Covering Group

Note: Unless noted otherwise, use the standard torque specifications

Mfg. No: 1696847-00



Wheel & Body Covering Group

REF NO	PART NO	QTY	DESCRIPTION
0010	709891	1	KIT, TOP COVER -(Includes Ref. Nos. 0030, 0040, 0050)
0020	709896	1	KIT, DRIVE CASE COVER -(Includes Ref. Nos. 0060, 0120)
0025	709916	1	KIT, SIDE COVER, RIGHT -(Includes Ref. Nos. 0030, 0040, 0060, 0120)
0030	1750777YP	1	CAPSCREW, Hex Washer Head, 1/4 x 20 x 2
0040	703232	1	NUT, Hex Lock, 1/4-20, ESNA
0050	7091081SM	2	SCREW, Hex Washer, Self Tap, 1/4-15 x 3/4
0060	704130	7	SCREW, Hex Head, 1/4-20 X 1/2
0070	311237YP	2	WHEEL, 2 x 8, Plastic 1/2, SILVER
0100	709179	2	HARNESS ASSEMBLY, Light (w/4152j)
0120	770056	2	CLIP NUT
0130	709887	1	KIT, CHUTE MOISTURE COVER -(Includes Ref. Nos. 0150)
0150	316042MA	1	CAPSCREW, Hex Washer Head, #10-HL x 5/8

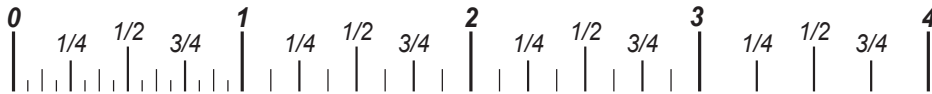
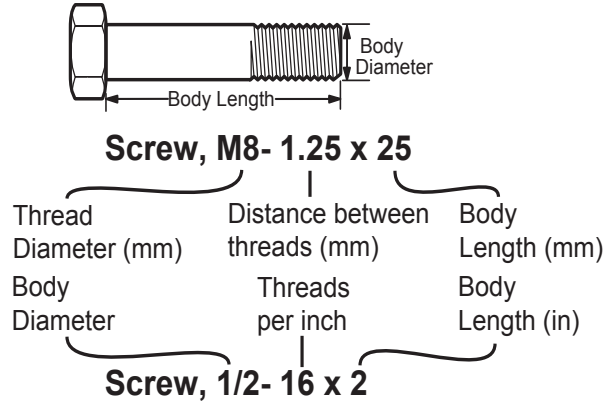
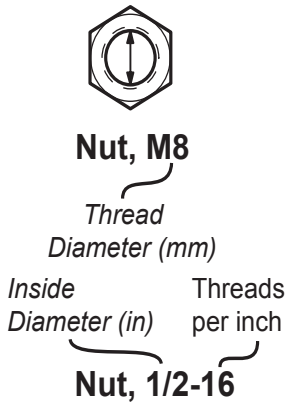
Not For
Reproduction

Hardware Identification & Torque Specifications

Torque Specification Chart								
FOR STANDARD METRIC MACHINE HARDWARE (Tolerance ± 20%)								
Property Class	5.6		8.8		10.9		12.9	
	Class 5.6		Class 8.8		Class 10.9		Class 12.9	
Size Of Hardware	in/lbs	Nm.	in/lbs	Nm.	in/lbs	Nm.	in/lbs	Nm.
	ft/lbs		ft/lbs		ft/lbs		ft/lbs	
M3	5.88	.56	13.44	1.28	19.2	1.80	22.92	2.15
M4	13.44	1.28	30.72	2.90	43.44	4.10	52.56	4.95
M5	26.4	2.50	60.96	5.75	5.97	8.10	7.15	9.7
M6	44.64	4.3	7.3	9.9	10.3	14	12.1	16.5
M7	5.2	7.1	12.1	16.5	16.9	23	19.9	27
M8	7.7	10.5	17.7	24	25	34	29	40
M10	15	21	35	48	50	67	59	81
M12	26	36	61	83	86.2	117	103	140
M14	42	58	101	132	136	185	162	220
M16	64	88	147	200	210	285	250	340
M18	89	121	202	275	287	390	346	470
M20	126	171	290	390	405	550	486	660
M22	169	230	390	530	559	745	656	890
M24	217	295	497	375	708	960	840	1140
M27	320	435	733	995	1032	1400	1239	1680
M30	435	590	995	1350	1401	1900	1681	2280
M33	590	800	1349	1830	1902	2580	2278	3090
M36	759	1030	1740	2360	2441	3310	2935	3980
M39	988	1340	2249	3050	3163	4290	3798	5150

Torque Specification Chart						
FOR STANDARD MACHINE HARDWARE (Tolerance ± 20%)						
Hardware Grade	No Marks		SAE Grade 5		SAE Grade 8	
	SAE Grade 2		SAE Grade 5		SAE Grade 8	
Size Of Hardware	in/lbs	Nm.	in/lbs	Nm.	in/lbs	Nm.
	ft/lbs		ft/lbs		ft/lbs	
8-32	19	2.1	30	3.4	41	4.6
8-36	20	2.3	31	3.5	43	4.9
10-24	27	3.1	43	4.9	60	6.8
10-32	31	3.5	49	5.5	68	7.7
1/4-20	66	7.6	8	10.9	12	16.3
1/4-28	76	8.6	10	13.6	14	19.0
5/16-18	11	15.0	17	23.1	25	34.0
5/16-24	12	16.3	19	25.8	29	34.0
3/8-16	20	27.2	30	40.8	45	61.2
3/8-24	23	31.3	35	47.6	50	68.0
7/16-14	30	40.8	50	68.0	70	95.2
7/16-20	35	47.6	55	74.8	80	108.8
1/2-13	50	68.0	75	102.0	110	149.6
1/2-20	55	74.8	90	122.4	120	163.2
9/16-12	65	88.4	110	149.6	150	204.0
9/16-18	75	102.0	120	163.2	170	231.2
5/8-11	90	122.4	150	204.0	220	299.2
5/8-18	100	136	180	244.8	240	326.4
3/4-10	160	217.6	260	353.6	386	525.0
3/4-16	180	244.8	300	408.0	420	571.2
7/8-9	140	190.4	400	544.0	600	816.0
7/8-14	155	210.8	440	598.4	660	897.6
1-8	220	299.2	580	788.8	900	1,244.0
1-12	240	326.4	640	870.4	1,000	1,360.0

The guides and ruler furnished below are designed to help you select the appropriate hardware.



Standard Hardware Sizing

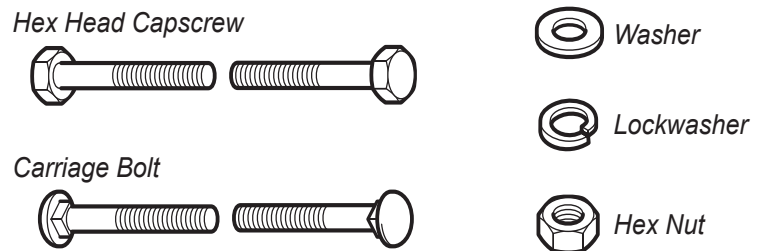
When a washer or nut is identified as 1/2" (M8), this is the *Nominal size*, meaning the *inside diameter* is 1/2 inch (8mm metric thread diameter); if a second number is present it represents the *threads per inch* (distance between threads).

When bolt or capscrew is identified as 1/2 - 16 x 2" (M8 - 1.25 x 50), this means the *Nominal size*, or body diameter is 1/2 inch (8mm metric thread diameter), the second number, 16, represents the *threads per inch*, (*distance between threads*). The final number is the body length of the bolt or screw, 2 inches (50mm).

NOTES

- These torque values are to be used for all hardware excluding: locknuts, self-tapping screws, thread forming screws, sheet metal screws and socket head setscrews.
- Recommended seating torque values for locknuts:
 - for prevailing torque locknuts - use 65% of grade 5 torques.
 - for flange whizlock nuts and screws - use 135% of grade 5 torques.
- Unless otherwise noted on assembly drawings, all torque values must meet this specification.

Common Hardware Types



Wrench & Fastener Size Guide

1/4" Bolt or Nut Wrench—7/16"	5/16" Bolt or Nut Wrench—1/2"	3/8" Bolt or Nut Wrench—9/16"	7/16" Bolt or Nut Wrench (Bolt)—5/8" Wrench (Nut)—11/16"	1/2" Bolt or Nut Wrench—3/4"
M6 Bolt or Nut Wrench—10mm	M8 Bolt or Nut Wrench—13mm	M10 Bolt or Nut Wrench—17mm	M12 Bolt or Nut Wrench—19mm	M14 Bolt or Nut Wrench—22mm

