



Instruction Manual & Parts Catalog

Motorcycle Wheel Chock and Stand

Model 70271



Read and understand this entire manual before assembling, installing, operating, or servicing this product.

SAVE THIS MANUAL

Copyright© 2012 by MAXXTOW. All rights reserved. No portion of this manual or any artwork contained herein may be reproduced in any shape or form without the express written consent of MaxxTow. Due to continuing improvements, actual product may differ slightly from the product described herein. Tools required for assembly and maintenance may not be included.

IMPORTANT SAFETY INFORMATION

This is a **SAFETY ALERT** symbol. It is used to alert you to potential personal injury hazards. Obey all safety messages that follow this symbol to avoid possible injury or death.

DANGER indicates a hazardous situation which, if not avoided, will result in death or injury.



WARNING indicates a hazardous situation which, if not avoided, could result in death or serious injury.



CAUTION indicates a hazardous situation which, if not avoided, could result in minor or moderate injury.



NOTICE indicates important information which, if not followed, may cause damage to equipment.

SAVE THIS MANUAL

Keep this manual for the safety warnings and precautions. The manual offers important information on how to assemble, use and maintain this product.

Write the product's model number and purchase date on the cover page of this manual.

Keep this manual (and your purchase receipt) in a safe place.

UNPACKING

The shipment should be thoroughly inspected as soon as it is received. The signed "bill of lading" is acknowledgement by the carrier of receipt in good condition or shipment covered by our invoice. For your own protection, if any of the goods called for on the bill of lading are shorted or damaged, do not accept them until the carrier makes a notation on the freight bill of the shorted or damaged goods.

Notify MAXXTOW immediately if any hidden loss or damage is discovered after receipt.

Definition of Symbols




WARNING concerning Risk of Eye Injury. Wear ANSI approved eye protection.



WARNING concerning Risk of Hearing Loss. Wear hearing protection.



IMPORTANT SAFETY INSTRUCTIONS

1.  **Read and understand all safety warnings and instructions.** Failure to follow the warnings and instructions may result in serious injury or death. Save all warnings and instructions for future reference.

2. Personal and Work Area Safety

- A.  **Always wear ANSI approved safety goggles.**
- B.  **Always wear hearing protection when working in noisy environments.** Prolonged exposure to high intensity noise can cause hearing loss.
- C.  **Use safety equipment.** Safety shoes, hard hat and work gloves must be used for applicable conditions.
- D. **Dress appropriately.** Never wear loose fitting clothing or jewelry when working. Contain long hair, and keep hair, clothing and gloves away from moving parts.
- E. **Use common sense when working.** Stay alert and concentrate when setting up and using the Motorcycle Wheel Chock. Never work while under the influence of alcohol, drugs or medications.

Personal and Work Area Safety (continued)

F. While setting up and using the Motorcycle Wheel Chock keep work area clean and well lighted. Keep spectators and children out of the work area.

3. Use of the Motorcycle Wheel Chock

A. This Wheel Chock is designed to fit most motorcycles. There are some extra wide tires and specially designed front fenders which will not fit in the Wheel Chock. Do not exceed the Wheel Chock's tire size capacity and do not modify the design of the Wheel Chock.

B. Before each use, check the Wheel Chock for loose hardware, cracks, damaged parts and any other condition that may affect the safe use of this product. Do not use the Wheel Chock if it is damaged.

C. **Be aware of the danger of "dynamic loading"**. This situation arises when a load is dropped onto or against the Wheel Chock, resulting in a short term excessive load. Dynamic loading can result in damage and failure of the Wheel Chock and personal injury to the person loading the motorcycle onto the Wheel Chock.

D. The Motorcycle Wheel Chock must be mounted onto a level, flat surface before use. Never use the Wheel Chock unless it is properly mounted to a solid surface capable of supporting the total weight of the motorcycle and the Wheel Chock.

E. Never ride a motorcycle into the Wheel Chock. The rider should dismount from the motorcycle and slowly roll it into the Wheel Chock. Never sit on a motorcycle that is loaded onto the Wheel Chock.

F. Adhere to all Department of Transportation (D.O.T.) requirements when using this product.

G. Before transporting a motorcycle in a truck bed, secure the motorcycle with ropes, and/or tie-downs (not included). The vehicle's engine must be OFF and parking brake set before loading or unloading the motorcycle into or out of the Wheel Chock. Do not exceed 55 MPH while transporting a motorcycle in a truck bed.

H. Maximum load for this product is a 1,800 Lbs. motorcycle; loading motorcycles heavier than 1,800 Lbs. into this Wheel Chock could result in personal injury, property damage and damage to the wheel chock.

I. This product is not designed for aircraft applications.

J. Product labels contain important information. Maintain labels, and if labels need to be replaced, contact MAXXTOW.

Keep in mind that the warnings previously discussed cannot cover all possible events and circumstances. It is important that the person setting up and using this Motorcycle Wheel Chock use common sense at all times.

MAXXTOW is not responsible for the attachment or the installation. The attachment of this product is critical and beyond the control of MAXXTOW Towing Products. MAXXTOW will neither guarantee nor will it be liable for any damage resulting from its attachment or improper use.

Assembling and Mounting the Motorcycle Wheel Chock and Stand



1. Refer to photo above and to the Assembly Drawing at end of this manual.
2. Once assembled, this Motorcycle Wheel Chock must be mounted to a solid, level concrete surface, or in the bed of a truck.
3. **To assemble the Wheel Chock:**



Always wear ANSI approved safety goggles.

- A. Assemble Front Support (4) to the front, closed end of the Stand Base (3), using Bolts (12), Washers (7) and Nuts (8). If not already assembled, thread the Eyelets (5) and the Leg Plugs (8) into the Front Support.
- B. See Assembly Drawing for positioning of the Wheel Bracket (2). Assemble this to the Stand Base using Rod (11) secured with Washers (9) and R-Pins (10).
- C. Note: The Wheel Cradle (1) can be moved forward, or backward depending on the size of the motorcycle front wheel. Measure the motorcycle front wheel and see how it fits between the Wheel Bracket (2) and the Wheel Cradle. Then put the Wheel Cradle in the desired position and secure it in place using Rod (11); use Washers (9) and R-Pins (10) to lock the Rod in place.
- D. This Wheel Chock and Stand must be

securely mounted before using. Plan the location carefully. The mounting surface must be level and solid and designed to support the heavy weight of a motorcycle. There should be adequate room on both sides of the Stand so that the motorcycle can be safely rolled in and out without obstructions.

E. There are mounting holes in the bottom of the Stand Base (3). Use these holes as a template to plan where to mount the Stand. Mounting hardware should be inserted into all 4 of the mounting holes on each side of the Stand Base.

F. **For mounting in concrete**, use concrete drill bit to drill holes; then attach concrete anchor bolts (not included) to the floor before securing the Stand Base to the concrete. Follow hardware manufacturer's instructions for properly securing concrete anchors in the cement.

For mounting to a truck bed, plan the location only after making sure that no electrical wires, gas tanks or other obstacles are in the path of the drilling. Use a steel cutting drill bit to drill the needed holes. Secure the Stand Base to the truck bed with appropriate hardware (not included).

If you are not accustomed to doing the tasks mentioned above, the work should be done by a qualified service technician.

Using the Motorcycle Wheel Chock

1. As stated, the Wheel Cradle (1) can be adjusted to one of several positions depending on the size of the motorcycle wheel. Find the position that best locks the wheel in place when the wheel is rolled in and the Wheel Bracket pivots up to its closed position.
2. Loading a motorcycle into a truck bed will

require appropriate ramps (not included). The motorcycle must also be secured to the truck bed with straps or belts (not included).

To load the motorcycle into the Wheel Chock, lower the leading edge of the Wheel Bracket (2) and slowly push the motorcycle into the Stand. It is recommended that an assistant help with this task. As the wheel rolls in, the pivoting Bracket will pivot and close, securing the motorcycle in the Wheel Chock.

3. If the motorcycle is going to be stored in the Wheel Chock for a length of time, it is recommended that additional stability supports are used (straps or belts).

4. To release the motorcycle from the Wheel Chock, first remove any stability supports used, and then with assistance, slowly roll back the motorcycle away from the Wheel Chock.

Maintaining the Wheel Chock

1. Frequently check the condition of the Motorcycle Wheel Chock. Make sure all components are in good condition. If the Wheel Chock becomes damaged through accident, or if any weld damage is noted, the product should be replaced. Check to make sure that all hardware is tightly secured in place. Keep the Wheel Chock clean.

SPECIFICATIONS

| | |
|--------------------------------|--|
| Material Composition | Formed Steel with Carbon Steel Hardware |
| Wheel Cradle | Adjustable to 6 positions for different wheel sizes |
| Weight Capacity | 1,800 Lbs. |
| Wheel Size | 15" to 22" Diameter |
| Tire Tread Width Range* | 3" to 5" Wide |

*Represents the part of tire that contacts the ground. Tires in this range will fit into the Wheel Bracket (2).

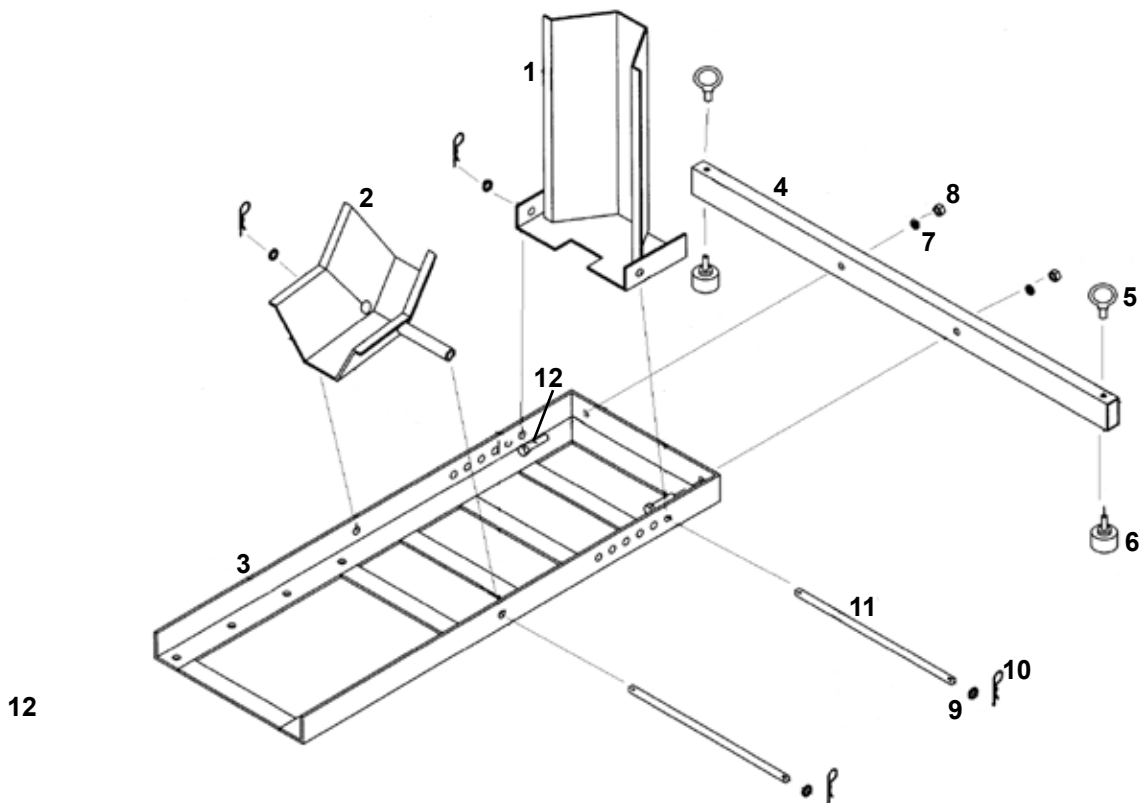
Limited Warranty

MAXXTOW warrants to the original retail purchaser that the product is free of defects in material and workmanship at the time of shipment. This Motorcycle Wheel Chock is warranted for 90 days from the date of purchase. This warranty is expressly in lieu of all other warranties, express or implied. Proof of purchase is required for warranty transactions; a copy of the original invoice or sales receipt is required.

Parts List

| Part # | Description | Qty |
|--------|-----------------|-----|
| 1 | Wheel Cradle | 1 |
| 2 | Wheel Bracket | 1 |
| 3 | Stand Base | 1 |
| 4 | Front Support | 1 |
| 5 | Eyelet | 2 |
| 6 | Leg Plug | 2 |
| 7 | Washer, size 10 | 2 |
| 8 | Nut, M10 | 2 |
| 9 | Washer, size 12 | 4 |
| 10 | R-Pin | 4 |
| 11 | Rod | 2 |
| 12 | Bolt, M10 x 45 | 2 |

Assembly Drawing



Note: The Parts List and Assembly Diagram is provided as a reference tool only. Some parts are listed and shown for illustration purposes only, and are not available as replacement parts. All repairs to this tool (including replacing parts) should only be done by a qualified service technician.