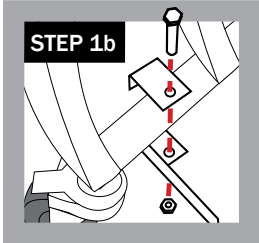
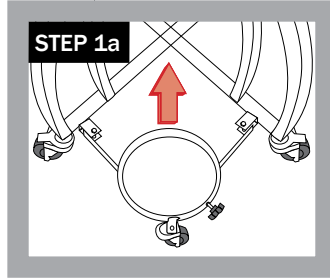
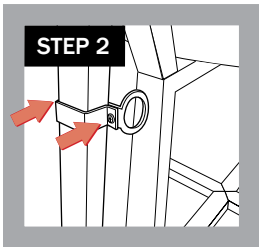


Step 1: Install Gas Caddy to Grill Cart

- Place the Gas Tank Caddy between the rear legs of the grill cart (Step 1a).
- Fasten mounting brackets to cart by removing nut and bolt from each bracket, separating the top bracket piece from Gas Tank Caddy frame.



- Slide Gas Tank Caddy under Cart, so top bracket piece rests on cart frame and is lined up with bolt hole on bottom of Gas Tank Caddy.
- Reinsert bolt into frame and tighten together with nut (Step 1b).
- Use the provided wrench to tighten all connections.



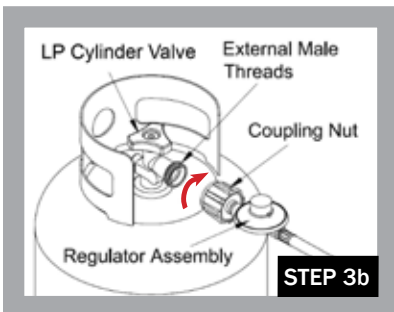
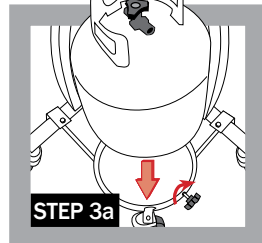
Step 2: Attach Hose Brackets

- Attach the two hose brackets (used to hold gas hose), with eyelets facing in, onto the front and rear legs of cart (Step 2).

Note: Do NOT allow the hose to touch the ceramic.

Step 3: Install Gas Tank

- Put the gas tank on the Gas Tank Caddy and tighten into place using Gas Tank Caddy knob (Step 3a).
- From rear of grill, feed gas hose through eyelets of the hose brackets, grill connector first. Connect gas hose to the Gas Insert using the Quick Disconnect fitting.
- Make sure the cylinder valve is closed (turn valve clockwise until tight).
- Inspect valve connections, port, hose and regulator assembly for any damage or debris. Remove any debris.



- When connecting regulator assembly to the valve, hand tighten the quick coupling nut clockwise to a complete stop (Step 3b).
- After the gas hose is connected to the gas tank and Gas Insert, open valve from gas tank and use some type of leak test* method to test the connection.

*Leak Test:

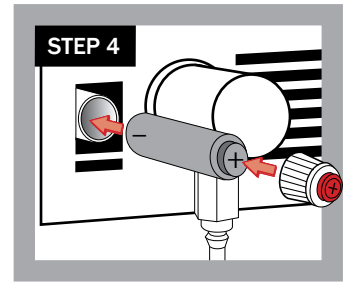
Pour Leak Test Solution (not included) or soapy water at the connection spot of the gas cylinder to check whether there is gas leakage. If solution produces bubbles this means there is a leak.

Watch For Bubbles



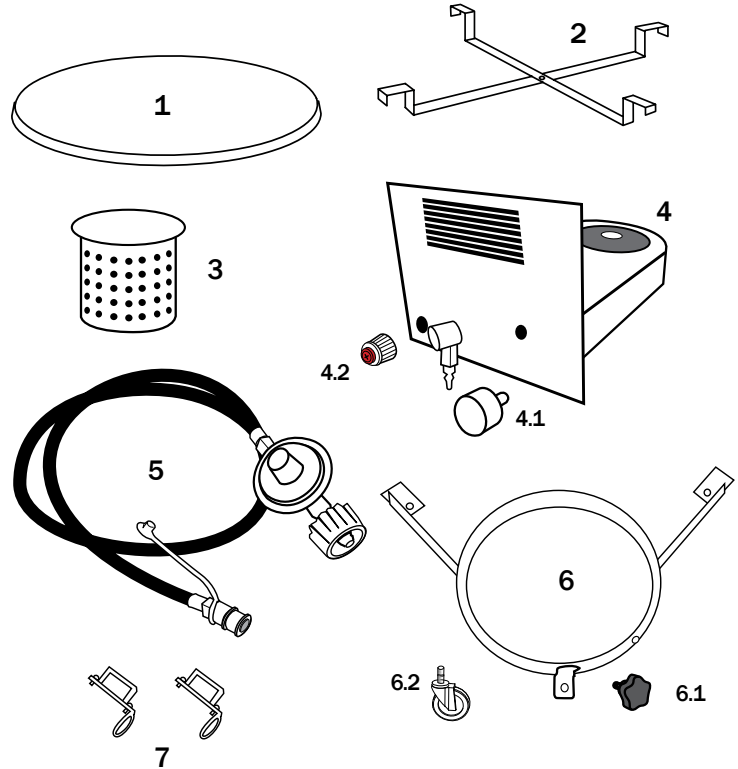
Step 4: Install Battery

- Remove Ignition Button Cap by turning counter clockwise. Insert AA battery (not included) negative end first.
- Replace Ignition Button Cap by tightening clockwise.
- Press Red Ignition Button and hold in to test battery. This will create spark on burner for starting (See manual for starting operation).



WARNING: To avoid shock, do not touch spark on burner

PARTS



PART NAMES

- 1 Lava Stone
- 2 SS Stone Bracket
- 3 Infrared Heat Exchanger
- 4 Gas Grill Burner Insert
- 4.1 Gas Grill Burner Insert Knob
- 4.2 Ignition Button Cap
- 5 Gas Supply Line w/ Regulator
- 6 Gas Tank Caddy
- 6.1 Gas Tank Caddy Knob
- 6.2 Gas Tank Caddy Rubber Wheel
- 7 Gas Supply Hose Bracket (x2)

PART NUMBERS

- VGK-101R
- VGK-BRACKET
- VGC GPIHE
- VGC GPBI-S
- VGC GPBIK
- VGC GPIBC
- VGC GPSLR
- VGC GPTC-SS
- VGC GPTCK
- VGC GPCWHL
- VGC GPGSLC-2

Visit
www.visiongrills.com/register
to register your grill and
view frequently asked questions