

HIGH PERFORMANCE, LAMINATED INSULATION.



SILVERBOARD UC

R10

RSI 1.76
TYPE III

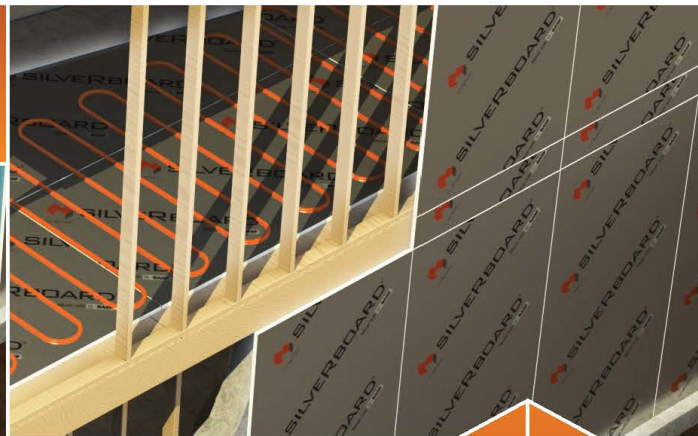


SilverBoard UC has an R5 per inch and compressive strength of 35 PSI making it the ideal solution for under concrete slab application. SB UC is laminated on the down side with a reflective film and on the concrete placement side with an opaque grey film, this film provides added strength, a vapour barrier and radon barrier (when taped as per specification) and reduces job site breakage and cracking during the construction process.

PRODUCT APPLICATIONS

- Under Basement slab insulation
- Increases efficiency of radiant floor heating (if installed)
- Heated driveways walkways and decks

SB-35 2.0in x 48in x 96in



SILVERBOARD XS

R5

RSI 0.88
TYPE III

R7.5

RSI 1.32
TYPE III

SilverBoard XS has been specifically engineered for exterior wall sheathing application on wood or steel frame construction. The reflective laminated surfaces of SilverBoard XS are micro perforated in order that the SilverBoard XS exterior wall sheathing insulation materials can "breathe" offering both water vapor permeance and an air barrier.

PRODUCT APPLICATIONS

- Above grade exterior wall sheathing
- Air, vapor and thermal barrier
- Micro perforated breathable double face radiant barrier.

SB-35 XS 1.0/1.5in x 48in x 96in

STC 19

R5.6
RSI 0.99

SILVERBOARD ACOUSTIC



SilverBoard Acoustic is a rigid flat-sheet insulation board that offers dramatic sound control properties up to IIC 70 coupled with radiant barrier (heat reflecting) properties and R5.6 insulation for use in residential, low rise, apartments and townhouses or high-rise residential or commercial. SilverBoard Acoustic increases jobsite efficiency and reduces labor costs.

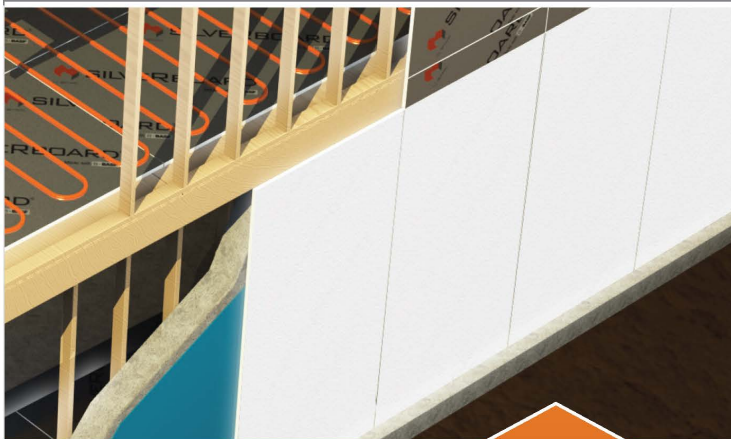
PRODUCT APPLICATIONS

- Walls, floors, and ceilings
- Bathrooms / Laundry rooms
- Theater and quiet rooms.

SS10000 1.0in x 48in x 96in

HIGH PERFORMANCE, LAMINATED INSULATION.

BUILDING CODES.



AMDRAIN

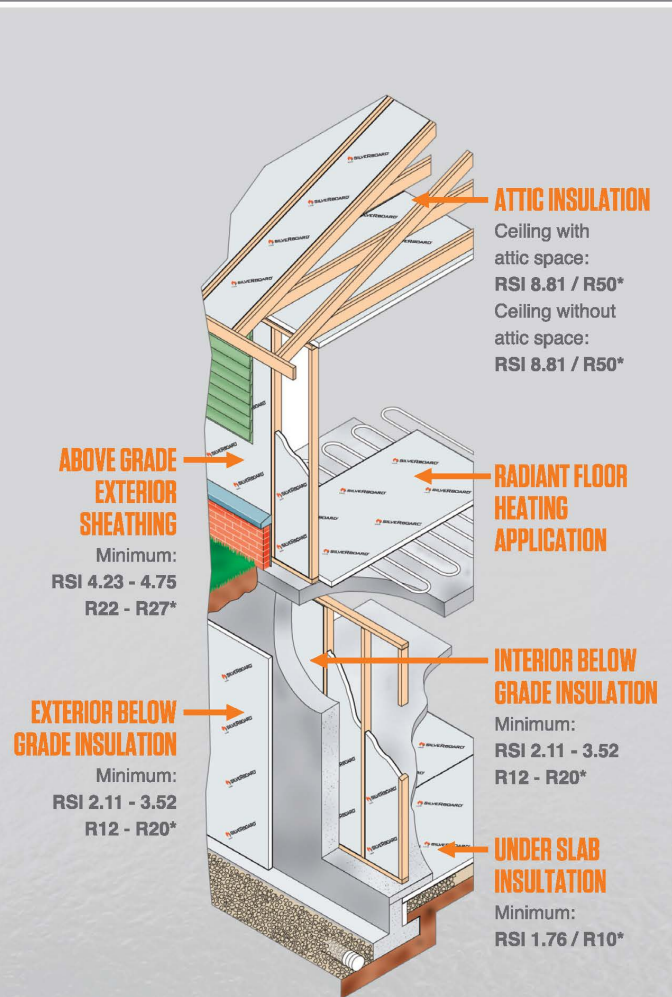
R8
RSI 1.41
TYPE II

Amvic AmDrain foundation insulation board is an EPS (expanded polystyrene) panel with one flat side and one side vertically grooved to provide a drainage system for either exterior or interior insulation, it is used as a supplementary component in all types of foundation / basement building systems.

PRODUCT APPLICATIONS

- Vertically grooved to provide drainage
- Interior / Exterior Insulation for foundation walls

DR22 2in x 48in x 96in GROOVED



* Depending on compliance package selected and zone. Check with local building code requirements.

FOR MORE INFORMATION
VISIT AMVIC.COM

