

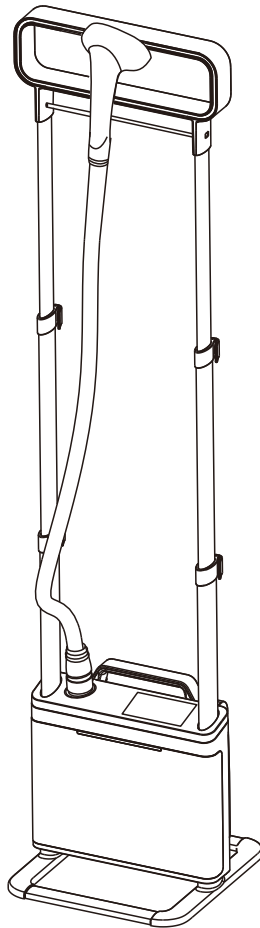


SteamandGo

GARMENT STEAMER

USER MANUAL

Model: SAG-48



PLEASE READ ALL INSTRUCTION CAREFULLY BEFORE USING.

DEAR VALUED CUSTOMERS:

Thank you for selecting our Garment Steamer. Your new Garment Steamer provides easy and powerful operation to help you remove wrinkles on clothes and eliminate dandruff and dust mites on clothes. Please read this User Manual prior to using this product.

IMPORTANT SAFETY INSRUCTIONS:

1. The voltage of your electrical source must correspond to that of the appliance (120V-60Hz). Connecting to the incorrect voltage may cause unreparable damage to the appliance and will invalidate the warranty.
2. Do not share the power supply with other high-powered electric appliance.
3. To reduce the risk of electric shock, do not immerse the appliance, plug, or power cord in water or other liquids.
4. Do not leave this appliance unattached while it is in operation.
5. Fill water before using and observe the water level during use.
6. Do not lay hose on the ground. Do not wind hose. Do not operate the appliance if cord is damaged.
7. Always keep the hose and nozzle elevated above the water tank. Never insert any object into any opening or hose.
8. Do not cut or attempt to extend the steaming hose or power cord.
9. Do not place the nozzle directly on any surface or the appliance power cord while it is hot or plugged in.
10. Be cautious about steam spraying out from the nozzle. Do not direct steam at people or animals, or use steamer on garments while they are being worn.
11. Steam only in a vertical motion. Never use steamer in horizontal position or tilt backwards, doing so may result in hot water discharge.
12. Move the appliance by firmly grasping the pole. Do not force the casters if they are stuck. Drain the water tank and water reservoir before inspecting the casters.
13. Turn off, unplug and allow the appliance to cool completely for at least 30 minutes prior to draining the water tank and water reservoir and storing.
14. Always turn off and unplug unit before refilling, draining, cleaning, moving, or when not in use.
15. For indoor use only.
16. Keep the appliance away from flammable materials and chemicals.
17. Do not fill the water tank with hot water or corrosive cleaning agents which could cause damage. Distilled or filtered water is strongly recommended.
18. When in use, this appliance will spray hot steam from its steam nozzle. To avoid injury from hot steam, do not aim the steam nozzle at people or pets.
19. Only use accessories provided by the manufacturer. The use of accessory attachments other than those provided by the manufacturer may result in fire, electric shock or irreversible damage to the appliance.
20. This appliance is designed only to be used by adult with full capacity for civil conduct. It is not intended for use by children or near children and other persons whose physical, sensory or mental capabilities or lack of experience and knowledge prevents them from using the appliance safely without supervision or instruction by a responsible person to ensure that they can use the appliance safely.

PRODUCT SPECIFICATION:

SAG-48

Water Tank Capacity:2.0L

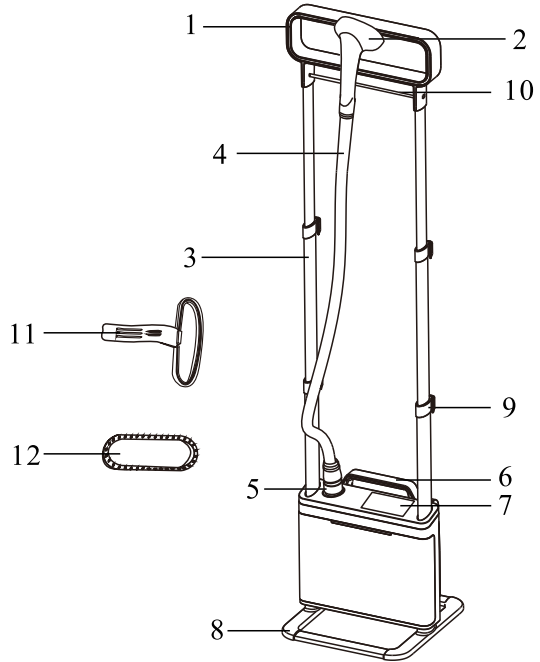
Steam Output Time:45 seconds

Input Voltage:120V~60Hz

Output Power:1500W

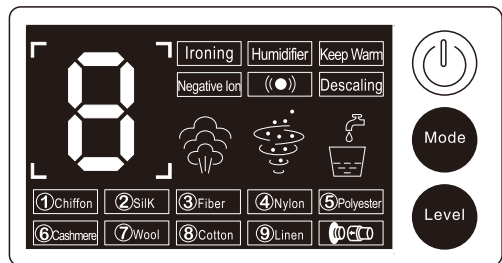
COMPONENTS:

- 1.Multi-functional Hanger
2. Steam Nozzle
3. Telescopic Bars
- 4.Steam Hose
- 5.Steam Hose Connector
6. Water Tank
- 7.Display Screen
- 8.Base Support
- 9.Power Cord Hook
10. Bar
- 11.Pant Press
- 12.Fabric Brush



STEAM SETTINGS:

- 1.Chiffon
- 2.Silk
- 3.Fiber
- 4.Nylon
- 5.Polyester
- 6.Cashmere
- 7.Wool
- 8.Cotton
- 9.Linen



ASSEMBLY INSTRUCTIONS:

1. Hose Assembly:

Press the Hose Connector upwards and connect the Hose with the Hose Connector Base, let the Hose Connector lock in place (see figure 2). Ensure the Steam Hose is well installed to the Main Body, or else the Steam Hose Sensor on the Main Body will shift the unit to Pause Mode till the Steam Hose is installed well.

Hose Disassembly: Press the Hose Connector upwards and disconnect the Hose with the Hose Connector Base.

2. Telescopic Bars and Multi-functional Rack Assembly: Insert the Telescopic Bars into the Multi-functional Rack and lock in place (see figure 3). When disassembling the Multi-functional Rack, press the triggers at both sides on the Telescopic Bars and pull out the Multi-functional Rack then connect the base support(figure 1)

3. Insert Telescopic Bars (the power cord hooks face the water tank, see figure 4). When disassembling the Telescopic Bars, press the Buttons at both sides on the Main Body to unlock the poles before disassembling (see figure 5)

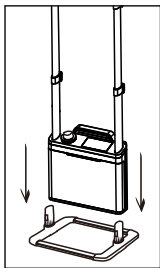


Figure 1

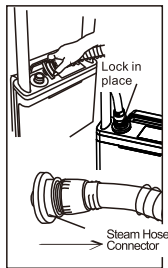


Figure 2

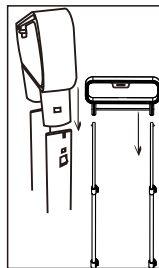


Figure 3

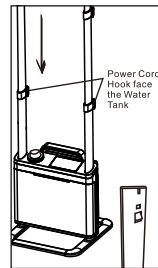


Figure 4

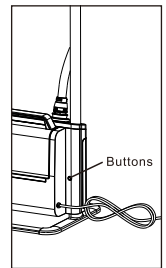


Figure 5

ACCESSORIES INSTRUCTIONS

1. Hanging the Steam Nozzle on the Multi-functional Rack with the hooks on both sides of the rack (see figure 6).

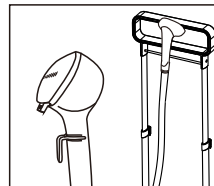


Figure 6

2. Power Cord Hook

After operation, unplug the appliance, the power cord could be coiled on the power cord hooks on the double telescopic poles for convenient power cord storage (see figure 7).

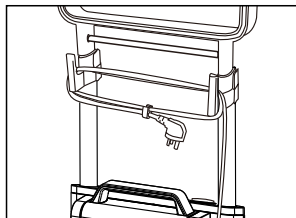


Figure 7

3. Fabric Brush

- 3.1 Unplug the appliance, wait till the steam stops spraying.
- 3.2 Press the brush to the Steam Nozzle to lock in place. (see Figure 8)

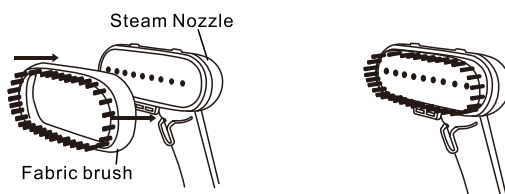


Figure 8

4. Pant Press

- 4.1 Turn off the garment steamer and wait until no steam emits from the Steam Nozzle.
- 4.2 Assemble the Pants Press towards the peg that at the bottom of Steam Nozzle.
- 4.3. Press the Pant Press gently until it is firm in place.

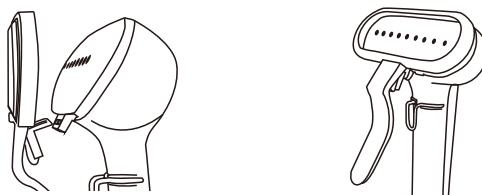


Figure 9

CAUTION:

Do not install the accessory while steam is emitting from the Steam Nozzle to avoid scald.

5. Filling the Water Tank

Take out the Water Tank, unscrew the Water Tank nut. Fill the Water Tank with full tank (the temperature of the water should not exceed 50°C). To prolong the life of the appliance, we recommend using distilled or de-mineralized water. Do not use Water Tank without water during operation, it will damage the appliance (see figure 11).

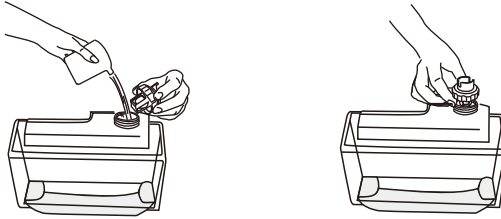
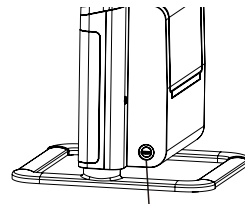


Figure 11

6. How to Use Outlet

Unscrew the Drain Plug which is on the side of the appliance clockwise (Figure 12). Empty the Water Reservoir after finished steaming or the appliance is not in use, to avoid water deterioration and bacteria breeding. Screw the Drain Plug AFTER extra water is drained off before storage.



Drain Plug
Figure 12

7. Multi-functional Rack:



Figure 13

Caution: During operation, when the Steam Nozzle was hanged on the hook of the Multi-functional Rack, to avoid deformation of the Multi-functional Rack, putting clothes and covering the Steam Nozzle is strongly prohibited (see figure 14)!

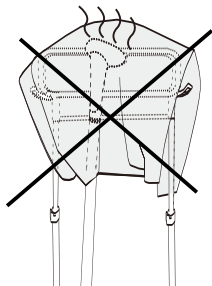


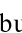
Figure 14

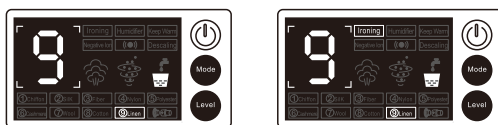
8. Display Screen

1. Power-up Mode:

Plug in unit, the buzzer will make a "bee" sound, the power indicator will blink, digital screen will not be lighted up, and then the machine is under the power-up mode.

2. Stand-by Mode:

Touch the power on-off button , the buzzer will make a "bee" sound, and the power indicator, mode indicator as well as setting indicator will light; when no Steam Hose is detected by the Steam Hose Sensor, "Ironing" symbol will blink (the default mode of ironing, and on the 9th setting), and the machine is in Standby Mode without heating. The buzzer makes a "bee" sound every five seconds and stops after sounding for 10 times. The "Ironing" and "Humidifier" Modes can be cyclically selected by touching the "Mode" button ("Ironing" or "Humidifying" symbol will blink); the setting can be cyclically selected from 1 – 9 by touching "Level" button under the "Ironing" Mode, and the buzzer prompts with "bee"; the settings cannot be selected under the "Humidifier" Mode, but only with prompt of "bee". If the Steam Hose is still not detected after 2 minutes, the machine will automatically shut down and enter into the Power-up Mode.





Stand-by Mode (Ironing Mode)



Stand-by Mode (Humidifier Mode)

Figure 15

3. Working Mode:

When the machine is under "Ironing" Mode, and Steam Hose is installed well, "Ironing" symbol is on, and for the machine, its original setting is the 9th Level(Maximum), the "Linen" symbol is on, the screen shows with "9", and "CCC" symbol is on. Touch the "Level" button to change the settings. The "Negative Ion" symbol is on, other symbols will shimmer. After heating for 45 seconds, steam symbol will light cyclically, the steam symbol  appears, then press Mode button to select "Humidifier" Mode and Steam Hose is installed well, the "Humidifier" symbol  on, as well as Negative Ion symbol. Then the machine will perform humidify function at a power of 300W.



Working Mode (Ironing Mode)


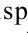


Working Mode (Humidifier Mode)

Figure 16

If you don't want to detect whether there the Steam Hose is installed well, press the "Mode" button for 3 seconds, and the buzzer will make a "bee" sound, the sensor function is canceled; then you can touch the "Mode" button to choose the working Mode.

4. Water shortage state:

In case of water shortage during operation, regardless under "humidifier" Mode or "Ironing" Mode, water shortage symbol  will blink, the unit will stay in keep warm mode at a power of 80 - 120W. The buzzer makes a "bee" sound every five seconds and stops after sounding for 10 times. If the water is refilled within 1 minute, water level symbol will display , the unit will return to the previous working mode; if the water is not refilled within 5 minutes, the unit will automatically shut down and enter into the power-up mode.



Water shortage state under Ironing Mode

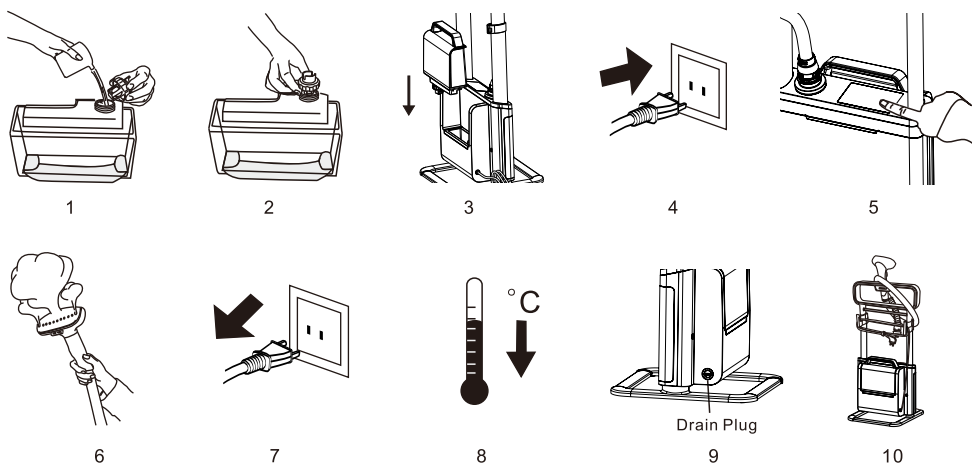


Water shortage state under Humidifier Mode

Figure 17

INSTRUCTIONS FOR USE

1. Fill in the Water Tank with full tank and screw the Water Tank Nut.
 2. Place the Water Tank back to the unit.
 3. Plug in the unit.
 4. Gently touch the ⏻ button on the display screen to start the unit.
 5. Wait for approximately 45 second, steam comes out, the unit is ready to use.
 6. Gentle touch touch the ⏻ button on the display screen to turn off the unit after finishing steaming.
 7. Unplug the unit,
 8. Wait for at least 30 minutes till the unit cools down completely.
 9. Unscrew the Drain Plug to empty the Water Tank, then screw the Drain Plug.
 10. Follow the **CLEANING AND MAINTENANCE** procedure and store the unit properly.
- Caution: Ensure the drain plug is screwed well every time before use.



PRESSING WITH STEAM:

1. Grasp the Handle, and place the Steam Nozzle at the bottom of the garment. Steam will rise along the inside and outside of the fabric, removing wrinkles. Slowly slide the nozzle vertically, from the bottom to the top (See Figure 19) of the garment. Do not allow kinks to form in the hose at any time.
2. Remove the nozzle from bottom to top on the garment, and smooth the fabric with your free hand.
3. Repeat steps 2 and 3 as necessary until the fabric is wrinkled free.
4. Curtains and draperies can be steamed while still hanging (See Figure 20).
5. Heavier fabrics may require repeated steaming.
6. To remove stubborn wrinkles, the Fabric Brush may also be used
7. be careful when handling garments on the Clothes Hanger Hook. Pulling on the garment with too much force may cause the unit to tip.

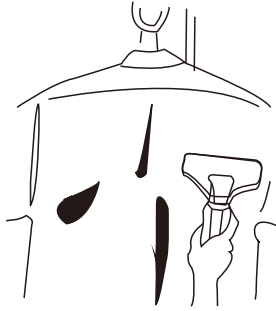


Figure 19



Figure 20

CLEANING AND MAINTENANCE:

We recommend you follow this procedure at least once per week.

1. Turn off and unplug the unit from the power outlet.
2. Allow the steamer to cool completely for at least 30 minutes.
3. Remove the Hose and shorten the Telescopic Bars, then set them aside.
4. Remove and drain the Water Tank. Rinse the Water Tank with fresh water, and drain completely. Place the Water Tank back on the Water Reservoir.
5. Remove the Drain Plug and empty the Water Tank.
6. Flush the unit by filling the Water Reservoir and the Hose Connector with fresh water and draining completely. Replace the Drain Plug.
7. Wrap the Hose around the Telescopic Pole one time. Place the Steam Nozzle on the steam nozzle holder.
8. Store in a cool, dry place.

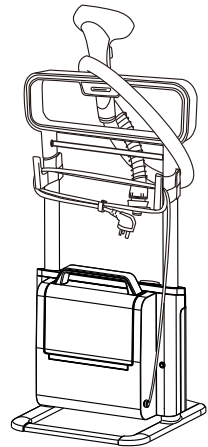


Figure 21

REMOVING MINERAL BUILT-UP:

High mineral in many municipal water suppliers may cause mineral built-up in garment steamers. Mineral residue inside of the internal pipes and heater can result in intermittent steam or, in some cases, no steam at all. We recommend you removing the mineral built-up after using the product for 7-15 days or every month. Please follow the steps blow to remove the mineral built-up:

1. Turn off and unplug the unit.
2. Remove the hose and pole from the unit.
3. Drain the Water Reservoir, and empty the Water Tank.
4. Mix a solution of 50% vinegar and 50% water. 2 cups of this solution will be sufficient.

5. Slowly pour the water-vinegar solution into the Hose Connector.
6. Wait for 40 minutes.
7. Drain the solution out of the Water Reservoir by removing the drain plug and drain the liquid into a sink or tub.
8. Drain the solution out of the Hose Connector by tilting the unit over a sink or tub and pouring the water out of the Hose Connector.
9. Pour clean water in the Hose Connector and Water Reservoir inlet, and drain. Repeat this step until the vinegar odor dissipates.
10. Reassemble the unit.

TROUBLE SHOOTING:

PROBLEM	REASON	SOLUTION
The unit fails to steam. Indicating lamps do not illuminate.	Garment Steamer is not plugged in.	Plug in the unit.
	Household power system problem/fuse is blown.	Check the power outlet or call a qualified electrician for help.
The unit fails to steam. Indicating lamps illuminate.	Mineral build-up in the unit.	Follow the Removing Mineral Built-up steps.
	The Water Tank is empty.	Refill the Water Tank.
Noise in Steam Hose, Steam Nozzle stops spraying steam.	Condensation in hose.	Straight the Steam Nozzle.
Steam is intermittent.	Mineral build-up in the unit.	Follow the Removing Mineral Built-up steps.



SteamandGo