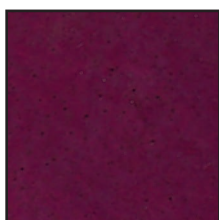




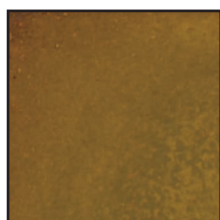
**Universal (Water or Acetone)**

# **INTERIOR CONCRETE DYE**

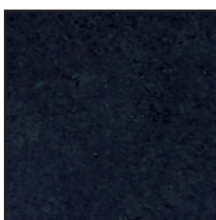
**INTERIOR CONCRETE DYE** is a penetrating dye that adds color to existing interior concrete. This coloring method provides an elegant decorative appearance without the harsh chemicals or tedious and expensive process of acid-based chemical staining. Beginning with a properly prepared surface, **INTERIOR CONCRETE DYE** can be applied and sealed in as little as one day, minimizing down-time. Nano-particles allow the color to penetrate the concrete, resulting in a durable treatment that will not wear away with traffic. Seal with Eagle **ARMOR SEAL**.



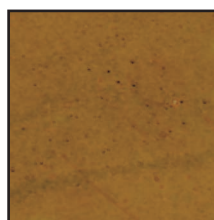
**POMEGRANATE**



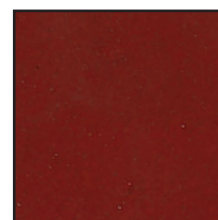
**PINEAPPLE**



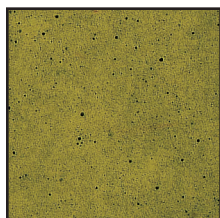
**BLACK ORCHID**



**WARM HONEY**



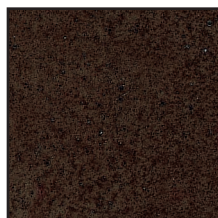
**RHUBARB**



**DANDELION**



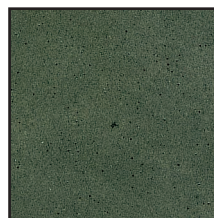
**COLA**



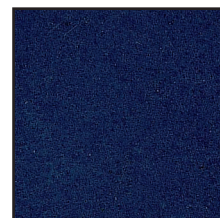
**MALT BROWN**



**RED BERRY**



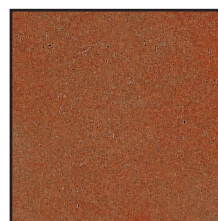
**THISTLE GREEN**



**BLUEBERRY**



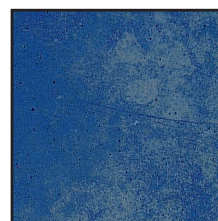
**ROOT BEER**



**SWEET POTATO**



**VIOLET**



**BLUE POPPY**



**MAPLE SYRUP**



**ROAST PEPPER**

★ Interior concrete ★ Overlay toppings ★ Stencil designs ★ Acid stain repair ★ Acid stain accent

**Mixes Instantly Into Solution ★ No Additional Mottling Agent Required**

# Eagle INTERIOR CONCRETE DYE

## TOOLS & MATERIALS REQUIRED

- ★ Pump-up sprayer with conical tip. (Acetone-resistant sprayer if using acetone)
- ★ If not using DRIP-LESS Sprayer, absorbent cloth or small container to catch drips
- ★ Painter's masking tape and plastic sheeting
- ★ Clean water for cleaning equipment
- ★ White buffing pad and tackcloth
- ★ Eagle ETCH & CLEAN
- ★ Eagle DEGREASER NEUTRALIZER
- ★ Synthetic bristle brush
- ★ Eagle ARMOR SEAL
- ★ Eagle CONCRETE POLISH

## DYE PREPARATION

INTERIOR CONCRETE DYE concentrate should be transferred into a 1-gallon sprayer. Use clean water or acetone to rinse the residue from the concentrate bottle into the 1-gallon container. Repeat this step until all SUPER DYE is out of the bottle. Add clean water or acetone to a final volume of 1 gallon. To use larger capacity sprayers, adjust volumes.

## SURFACE PREPARATION

All walls, furniture, columns, or other items/areas that you do not want to color should be masked using painter's tape and plastic sheeting. This will protect the items from overspray. Concrete should be cured and clean, free of dirt, dust, residue and oil. Pre-etch and clean with Eagle ETCH & CLEAN until concrete readily absorbs water. For oily surfaces, Eagle DEGREASER NEUTRALIZER is recommended. Power wash the surface at 3000 psi. If not possible, scrub with clean water and remove excess. Allow to dry 24 hours.

## APPLICATION

Always do a test spot in an inconspicuous area before proceeding with the project. Apply with a pump-up sprayer using a conical, fine-spray tip. Small areas can be brushed using a circular motion to avoid brush strokes. Take care to maintain a wet edge to avoid bleed lines. Do not apply more material than the surface will absorb in 1 minute. If not using a Drip-Less Sprayer, tape a piece of cloth or a small container to the sprayer body to catch drips while not spraying the material. Place the tip of the spray wand on the cloth or into the small container immediately after releasing the spray handle. Apply the dye uniformly to obtain a more uniform final appearance. Apply in a random, circular motion with some overlapping to generate a more mottled look that more closely resembles acid stain. Colors may be blended to produce an infinite palette or applied over a base color for a unique look. Depending on the depth of color that is desired, more than one application may be required. Use clean water or acetone to rinse the sprayer between color changes. Keep a container of clean water or acetone available and place the end of the sprayer wand into it between applications to keep the tip from becoming clogged.

## SEALING

The surface must be sealed with a clear concrete sealer to lock in and protect the color. If dye residue is present, remove with white buffing pad and tackcloth. Do not use water. A light initial coat of sealer should be applied to the dyed surface with a pump sprayer to "lock in" the dye. Apply sealer per the manufacturer's instructions. If using water based dyes, wait 4 hours to start sealing with a water-based sealer and 8 hours for solvent based sealer. If using acetone based dye, you can seal immediately. Spray apply first coat of sealer. Water based Eagle ARMOR SEAL will work if floor is not too tight. For on going maintenance, clean with water only and use Eagle CONCRETE POLISH for ongoing scuff protection and maintenance. Apply 2-3 coats initially per the label's instructions, and touch-up periodically as a regular maintenance routine.

## COVERAGE RATE

Approximately 200-400 square feet per gallon, depending on porosity and depth of color desired.

## TECHNICAL DATA

VOC: <15 g/L  
Flash Point: 150°

## HMIS

Health	1	Flammability	2
Reactivity	0	Protection	B

DISCLAIMER: Since manufacturer has no control over handling, use or storage, no guarantee expressed or implied is offered. Eagle IFP Company warrants the product to be free of defects and will replace or refund the purchase price of said products proven defective. Labor cost and/or other consequential damages are not covered by this warranty. Responsibility for claims of any kind is strictly limited to the purchase price of the product. The suitability of the product for any extended use shall be solely up to the user.