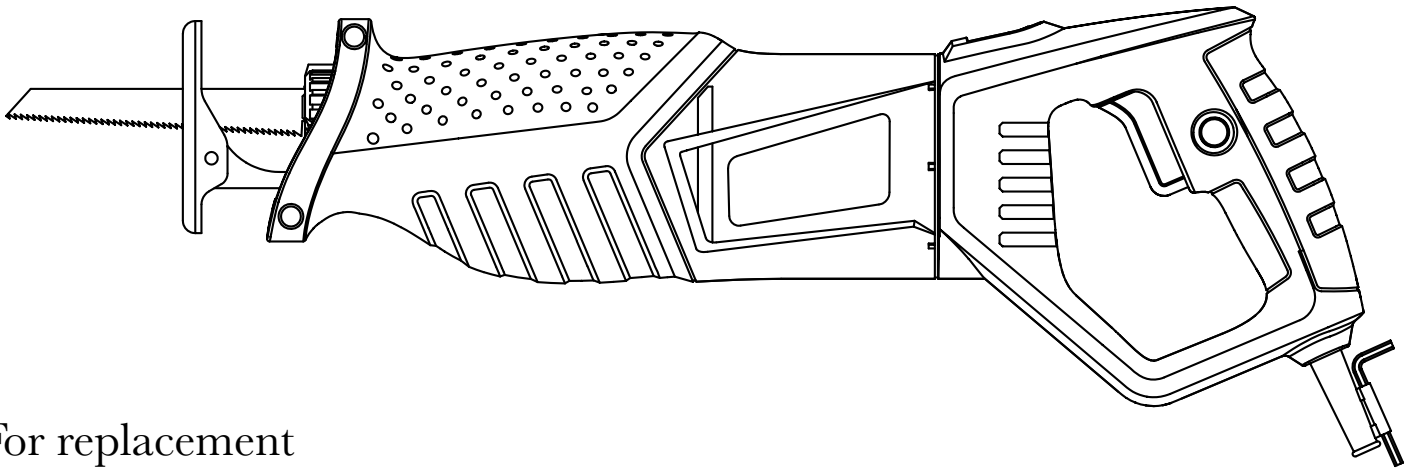




RECIPROCATING SAW



For replacement
parts visit
WENPRODUCTS.COM

Model # 3630
bit.ly/wenvideo

IMPORTANT:

Your new tool has been engineered and manufactured to WEN's highest standards for dependability, ease of operation, and operator safety. When properly cared for, this product will supply you years of rugged, trouble-free performance. Pay close attention to the rules for safe operation, warnings, and cautions. If you use your tool properly and for intended purpose, you will enjoy years of safe, reliable service.

NEED HELP? CONTACT US!

Have product questions? Need technical support?
Please feel free to contact us at:



800-232-1195 (M-F 8AM-5PM CST)



techsupport@wenproducts.com



WENPRODUCTS.COM



TABLE OF CONTENTS

Technical Data	2
General Safety Rules	3
Specific Safety Rules For Reciprocating Saws	4
Electrical Information	5
Know Your Reciprocating Saw	6
Assembly and Adjustments	7
Operation	7
Maintenance	8
Exploded View and Parts List	9
Warranty	10

TECHNICAL DATA

Model Number:	3630
Motor:	120 V, 60 Hz, 10A
Speed:	0 - 2,800 RPM
Stroke:	1-1/10 in.
Cutting Wood Capacity:	4-1/2 in.
Cutting Metal Capacity:	3/5 in.
Weight:	7.7 lbs
Includes:	One Metal Blade One Wood Blade

GENERAL SAFETY RULES

Safety is a combination of common sense, staying alert and knowing how your item works. **SAVE THESE SAFETY INSTRUCTIONS.**



WARNING: To avoid mistakes and serious injury, do not plug in your tool until the following steps have been read and understood.

1. **READ** and become familiar with this entire instruction manual. **LEARN** the tool's applications, limitations, and possible hazards.
2. **AVOID DANGEROUS CONDITIONS.** Do not use power tools in wet or damp areas or expose them to rain. Keep work areas well lit.
3. **DO NOT** use power tools in the presence of flammable liquids or gases.
4. **ALWAYS** keep your work area clean, uncluttered, and well lit. **DO NOT** work on floor surfaces that are slippery with sawdust or wax.
5. **KEEP BYSTANDERS AT A SAFE DISTANCE** from the work area, especially when the tool is operating. **NEVER** allow children or pets near the tool.
6. **DO NOT FORCE THE TOOL** to do a job for which it was not designed.
7. **DRESS FOR SAFETY.** Do not wear loose clothing, gloves, neckties, or jewelry (rings, watches, etc.) when operating the tool. Inappropriate clothing and items can get caught in moving parts and draw you in. **ALWAYS** wear non-slip footwear and tie back long hair.
8. **WEAR A FACE MASK OR DUST MASK** to fight the dust produced by sawing operations.



WARNING: Dust generated from certain materials can be hazardous to your health. Always operate the tool in a well-ventilated area and provide for proper dust removal. Use dust collection systems whenever possible.

9. **ALWAYS** remove the power cord plug from the electrical outlet when making adjustments, changing parts, cleaning, or working on the tool.
10. **KEEP GUARDS IN PLACE AND IN WORKING ORDER.**
11. **AVOID ACCIDENTAL START-UPS.** Make sure the power switch is in the OFF position before plugging in the power cord.
12. **REMOVE ADJUSTMENT TOOLS.** Always make sure all adjustment tools are removed from the saw before turning it on.
13. **NEVER LEAVE A RUNNING TOOL UNATTENDED.** Turn the power switch to OFF. Do not leave the tool until it has come to a complete stop.
14. **NEVER STAND ON A TOOL.** Serious injury could result if the tool tips or is accidentally hit. **DO NOT** store anything above or near the tool.

GENERAL SAFETY RULES

15. **DO NOT OVERREACH.** Keep proper footing and balance at all times. Wear oil-resistant rubber-soled footwear. Keep the floor clear of oil, scrap, and other debris.
16. **MAINTAIN TOOLS PROPERLY.** ALWAYS keep tools clean and in good working order. Follow instructions for lubricating and changing accessories.
17. **CHECK FOR DAMAGED PARTS.** Check for alignment of moving parts, jamming, breakage, improper mounting, or any other conditions that may affect the tool's operation. Any part that is damaged should be properly repaired or replaced before use.
18. **MAKE THE WORKSHOP CHILDPROOF.** Use padlocks and master switches and ALWAYS remove starter keys.
19. **DO NOT** operate the tool if you are under the influence of drugs, alcohol, or medication that may affect your ability to properly use the tool.
20. **USE SAFETY GOGGLES AT ALL TIMES** that comply with ANSI Z87.1. Normal safety glasses only have impact resistant lenses and are not designed for safety. Wear a face or dust mask when working in a dusty environment. Use ear protection such as plugs or muffs during extended periods of operation.

SPECIFIC RULES FOR RECIPROCATING SAWS



WARNING: Do not operate this tool until it is completely assembled according to the instructions.

1. Wait for the blade to stop before setting the tool down. An exposed rotating cutter may engage the surface, leading to possible loss of control and serious injury.
2. Hold the power tool by insulated gripping surfaces only in case the cutter contacts its own cord. Cutting a "live" wire may make exposed metal parts of the tool "live" and could give the operator an electric shock.
3. Secure the workpiece to a stable platform using clamps or another practical method. Holding the work by hand or against the body leaves it unstable and may lead to a loss of control.
4. Secure the material being cut. Never hold it in your hand or across your legs. Small workpieces must be adequately secured. Unstable support causes the blades to bind, resulting in a loss of control and possible injury.
5. Always start the saw before the blade is in contact with the workpiece. Let the blade reach full speed before using the tool. The saw can vibrate or chatter and possibly kickback if the cutting speed is too slow.
6. Check the workpiece for nails. If there are nails, either remove them or set them well below intended finished surface. If the saw blades strike objects like nails it may cause serious personal injury from kickback. Saw blades that can handle nails are available on the market; just make sure to check the specifications of the blade.
7. Unplug the saw before changing accessories. Accidental start-ups may occur if the saw is plugged in during an accessory change. Before plugging the tool back in, check that the trigger lock is OFF.
8. Keep handles and hands dry, clean and free from oil and grease. Slippery surfaces cannot safely maintain control of the power tool. Always hold the tool firmly with both hands for maximum control.

SPECIFIC RULES FOR RECIPROCATING SAWS

9. Never cut pressurized tanks or any containers containing hazardous or flammable materials.
10. Never pull the saw backwards over the workpiece.
11. When sawing, the adjustable footplate must always stay flush against the workpiece.
12. Remove the plug from power source before removing chips. The blades are hidden from view and you may be cut if the blade is contacted.
13. GFCI and personal protection devices such as electrician's rubber gloves and footwear will increase personal safety.
14. Loose or misaligned blades have the potential to strike tool housing and damage the tool as well as cause possible injury. Make sure blades are properly installed before operation.
15. Develop a periodic maintenance schedule for your tool. When cleaning a tool be careful not to disassemble any portion of the tool. Internal wires may be misplaced or pinched and safety guard return springs may be improperly mounted.
16. Certain cleaning agents such as gasoline, carbon tetrachloride, ammonia, etc. may damage plastic parts.
17. Only use undamaged saw blades. If too much wear and tear is shown on the blade, get a new blade before trying to cut anything.
18. Never stop the saw blade by pinching the blade on either side. Applying pressure to either side of the blade could result in injury. Do not touch the saw blade after operation, as it may be hot, especially when cutting metal.

ELECTRICAL INFORMATION

GROUNDING INSTRUCTIONS

IN THE EVENT OF A MALFUNCTION OR BREAKDOWN, grounding provides the path of least resistance for an electric current and reduces the risk of electric shock. This tool is equipped with an electric cord that has an equipment grounding conductor and a grounding plug. The plug **MUST** be plugged into a matching outlet that is properly installed and grounded in accordance with **ALL** local codes and ordinances.

DO NOT MODIFY THE PLUG PROVIDED. If it will not fit the outlet, have the proper outlet installed by a licensed electrician.

IMPROPER CONNECTION of the equipment grounding conductor can result in electric shock. The conductor with the green insulation (with or without yellow stripes) is the equipment grounding conductor. If repair or replacement of the electric cord or plug is necessary, **DO NOT** connect the equipment grounding conductor to a live terminal.

CHECK with a licensed electrician or service personnel if you do not completely understand the grounding instructions or whether the tool is properly grounded.

CAUTION: In all cases, make certain the outlet in question is properly grounded. If you are not sure, have a licensed electrician check the outlet.

ELECTRICAL INFORMATION

GUIDELINES FOR USING EXTENSION CORDS

Make sure your extension cord is in good condition. When using an extension cord, be sure to use one heavy enough to carry the current your product will draw. An undersized cord will cause a drop in line voltage resulting in loss of power and overheating. The table below shows the correct size to be used according to cord length and nameplate ampere rating. When in doubt, use a heavier cord. The smaller the gauge number, the heavier the cord.

Make sure your extension cord is properly wired and in good condition. Always replace a damaged extension cord or have it repaired by a qualified person before using it.

AMPERAGE	REQUIRED GAUGE FOR EXTENSION CORDS			
	25 ft.	50 ft.	100 ft.	150 ft.
9A	18 gauge	16 gauge	14 gauge	12 gauge

Protect your extension cords from sharp objects, excessive heat and damp/wet areas.

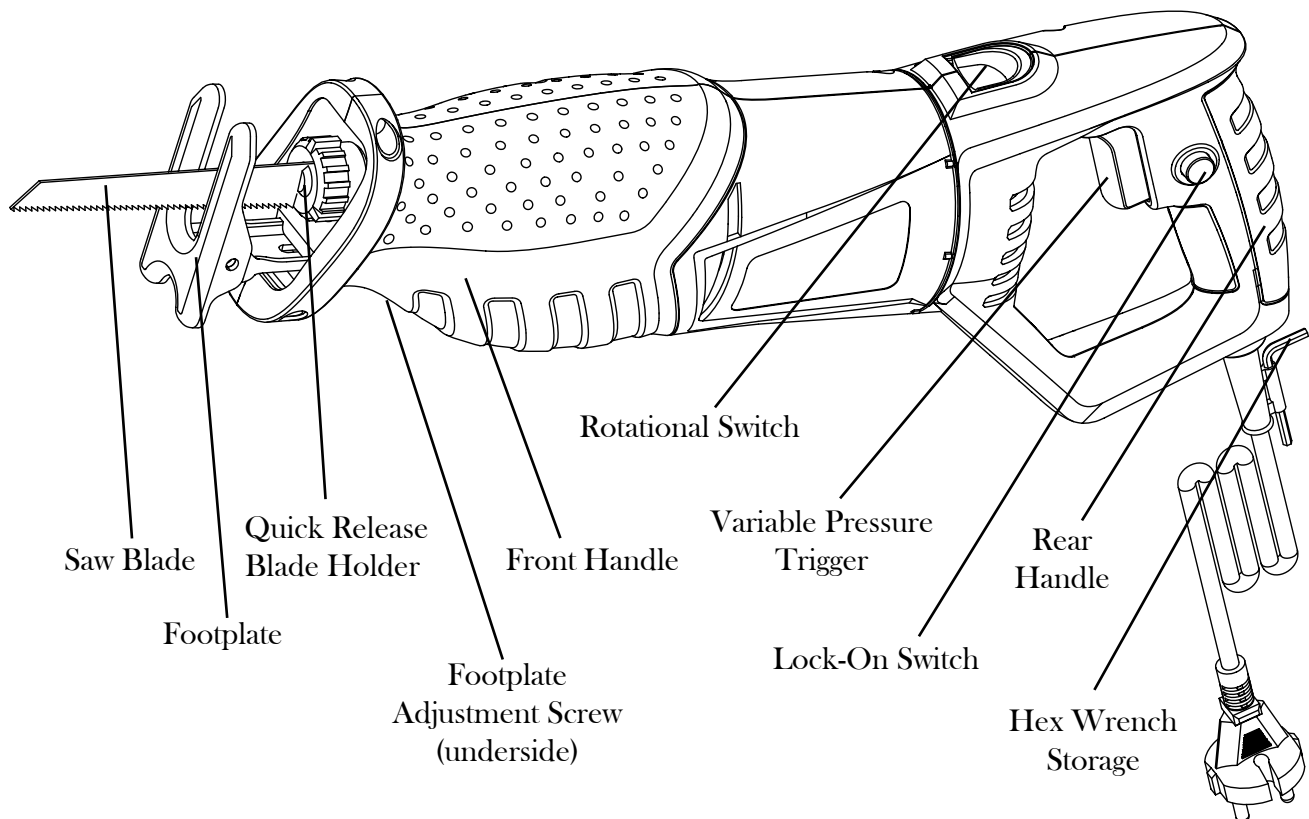
Use a separate electrical circuit for your tools. This circuit must not be less than a #12 wire and should be protected with a 15 A time-delayed fuse. Before connecting the motor to the power line, make sure the switch is in the OFF position and the electric current is rated the same as the current stamped on the motor nameplate. Running at a lower voltage will damage the motor.



WARNING: This tool must be grounded while in use to protect the operator from electric shock.

WARNING: This tool is for indoor use only. Do not expose to rain or use in damp locations.

KNOW YOUR RECIPROCATING SAW



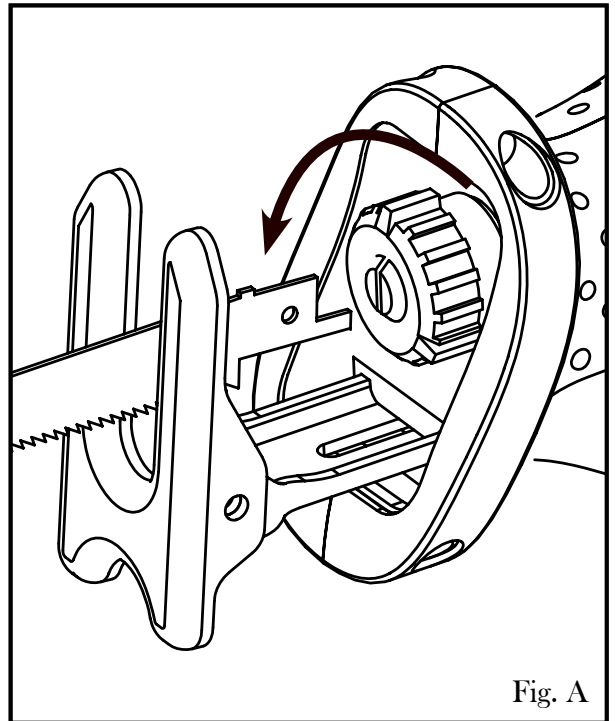
ASSEMBLY



WARNING: Never make any adjustments or blade installations while the machine is plugged in. Make sure that saw blades are free of fine material, such as small slivers of metal or wood. Use protective gloves during operation and assembly.

REPLACING/INSTALLING SAW BLADES

1. Select a saw blade with a 1/2-inch universal shank. If narrow curve cuts are required, a thinner blade would be preferable. Saw blades should never be longer than is required for the intended cut.
2. Twist the quick release blade holder in the direction shown in Fig. A to open up the jaws and allow room for sliding in a blade.
3. Place the shank of the blade into the jaws as far as it can go. Release the blade holder, allowing it to snap back in position.
4. Check the blade's security by tugging lightly to confirm that it has locked into position.



5. If you are changing a saw blade, always make sure that it has cooled down completely before attempting to remove it. Friction from various workpiece materials can cause the blades to get very hot directly after operation. To remove, twist the blade holder in the direction demonstrated in Figure A and carefully slide the blade out of position.

Note: If the blade is hot, just twist the quick release and hold it upside down so the blade falls out without any physical contact.

OPERATION



WARNING: Dusts from certain materials can be harmful to your respiratory health. Always use this tool in an area with good ventilation. Wear a dust mask during operation to prevent inhalation of unwanted particulates. Prevent dust accumulation, as piles of dust and debris can easily ignite and cause a fire.

ADJUSTING THE FOOTPLATE

1. Loosen the footplate adjustment screw found on the underbelly of the saw using the onboard hex wrench.
2. Once the screw is loose, position the footplate to meet the needs of your workpiece.
3. Retighten the footplate adjustment screw, making sure that the footplate is no longer free to move.

STARTING THE MACHINE

To start the machine, first make sure the blade has been properly installed. After checking the blade, plug the machine into a power source.

Pull the trigger switch to power the machine on. Always keep one hand on the back handle and one hand on the front during operation, making sure all body parts and cords are not in contact. If you would like to keep the saw running without needing to constantly be holding down the trigger, press the lock-on switch while the saw is running. This will keep the trigger engaged until you press on the trigger again to release it.

OPERATION

VARIBALE PRESSURE TRIGGER

Control the strokes per minute of the saw by varying the amount of pressure applied to the trigger. Holding the trigger all the way down will result in 2800 SPM. Ligher pressure on the ON/OFF trigger will result in a lower SPM.

WORK ADVICE

NOTE: When sawing lighter materials, make sure to keep in mind the recommendations of the material suppliers.

Check all workpieces for foriegn objects usch as nails or screws before sawing. Adjust the footplate to meet the particular idiosyncracies of the workpiece at hand.

Once all set-up has been completed, power on the machine and guide it towards the workpiece. Place the faceplate against the surface and saw through the material by applying uniform pressure. Do not force the saw to do a job for which it wasn't intended. Make sure to let the saw work at its own pace.

If the saw blade jams up, turn the machine off immediately and let the blade come to a complete stop. Unplug the machine. Widen the gap with a suitable tool and release the blade of the saw from its jam.

When sawing metal, always make sure to use a coolant or lubricant to prevent the material from heating up too much.

FLUSH CUTS: Using elastic bimetal saw blades, you can cut off items still attached flush at the wall. Place the saw blade directly against the wall and apply lateral pressure until the footplate faces the wall. Turn the machine on and saw through the workpiece.

PLUNGE CUTS: Always use short saw blades for plunge cutting to prevent injury and to maximize efficiency. Put the machine with the edge of the footplate onto the workpiece. Power the machine on to the maximum SPM. Press the blade firmly against the workpiece, allowing the blade to cut at its own pace, plunging itself into the workpiece. As soon as the footplate is able to lay flush against the workpiece, saw along the desired line.

MAINTENANCE

Regularly clean the saw blade holder with compressed air or a brush. Remove the saw blade from the power tool before cleaning the blade holder.

SERVICE: Preventive maintenance performed by unauthorized personnel may result in misplacing of internal wires and components, possibly causing a serious hazard. We recommend that all tool service be performed by a WEN Service Center or Authorized WEN Service Station.

TOOL LUBRICATION: For proper operation, make sure to routinely apply an appropriate lubricant.

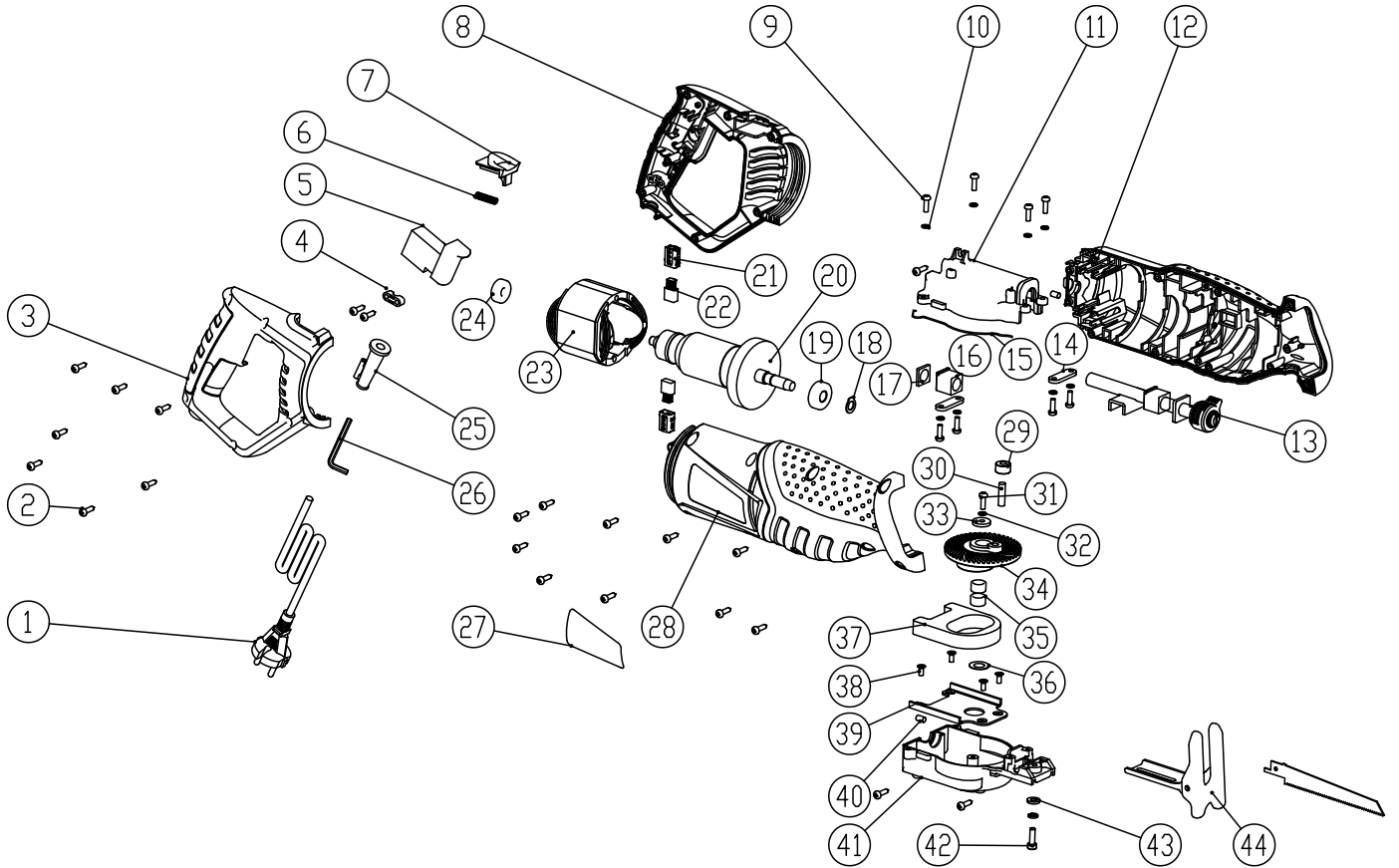


WARNING: To avoid accidents, always disconnect the tool from the power supply before cleaning or performing any maintenance. The tool may be cleaned most effectively with compressed dry air. Always wear safety goggles when cleaning tools with compressed air.



WARNING: Certain cleaning agents and solvents damage plastic parts. Some of these are: gasoline, carbon tetrachloride, chlorinated cleaning solvents, ammonia and household detergents that contain ammonia.

EXPLODED VIEW AND PARTS LIST



No.	Part Number	Description	Qty
1	3630-001	Power Cord	1
2	3630-002	Screw	22
3	3630-003	Right Handle	1
4	3630-004	Cord Clamp	1
5	3630-005	Switch	1
6	3630-006	Spring	1
7	3630-007	Push Button	1
8	3630-008	Left Handle	1
9	3630-009	Screw	8
10	3630-010	Washer	8
11	3630-011	Gear Box Top Panel	1
12	3630-012	Left Housing	1
13	3630-013	Plunger Subassembly	1
14	3630-014	Slide Clamp	2
15	3630-015	Belt	2
16	3630-016	Slide Block	1
17	3630-017	Slide Block Sleeve	1
18	3630-018	Washer	1
19	3630-019	6000-2RS Bearing	1
20	3630-020	Rotor	1
21	3630-021	Brush Holder	2
22	3630-022	Carbon Brush	2
23	3630-023	Stator	1

No.	Part Number	Description	Qty
24	3630-024	608-2RS Bearing	1
25	3630-025	Cord Sleeve	1
26	3630-026	Hex Wrench	1
27	3630-027	Label	2
28	3630-028	Right Housing	1
29	3630-029	Shaft sleeve	1
30	3630-030	Gear pin	1
31	3630-031	Screw	1
32	3630-032	Spring washer $\Phi 5$	2
33	3630-033	Flat washer	1
34	3630-034	Big gear	1
35	3630-035	Bearing	2
36	3630-036	Gear washer	1
37	3630-037	Balance block	1
38	3630-038	Screw	4
39	3630-039	Washer	1
40	3630-040	Rubber pin	1
41	3630-041	Gear box bottom cover	1
42	3630-042	Screw	1
43	3630-043	Front stand washer	1
44	3630-044	Front stand	1
NP	3630-045	Metal Cutting Blade	1
NP	3630-046	Wood Cutting Blade	1

LIMITED TWO YEAR WARRANTY

WEN Products is committed to building tools that are dependable for years. Our warranties are consistent with this commitment and our dedication to quality.

LIMITED WARRANTY OF WEN CONSUMER POWER TOOLS PRODUCTS FOR HOME USE

GREAT LAKES TECHNOLOGIES, LLC (“Seller”) warrants to the original purchaser only, that all WEN consumer power tools will be free from defects in material or workmanship for a period of two (2) years from date of purchase. Ninety days for all WEN products, if the tool is used for professional use.

SELLER’S SOLE OBLIGATION AND YOUR EXCLUSIVE REMEDY under this Limited Warranty and, to the extent permitted by law, any warranty or condition implied by law, shall be the repair or replacement of parts, without charge, which are defective in material or workmanship and which have not been misused, carelessly handled, or misrepaired by persons other than Seller or Authorized Service Center. To make a claim under this Limited Warranty, you must make sure to keep a copy of your proof of purchase that clearly defines the Date of Purchase (month and year) and the Place of Purchase. Place of purchase must be a direct vendor of Great Lakes Technologies, LLC. Third party vendors such as garage sales, pawn shops, resale shops, or any other secondhand merchant void the warranty included with this product. Contact techsupport@wenproducts.com or 1-800-232-1195 to make arrangements for repairs and transportation.

When returning a product for warranty service, the shipping charges must be prepaid by the purchaser. The product must be shipped in its original container (or an equivalent), properly packed to withstand the hazards of shipment. The product must be fully insured with a copy of the warranty card and/or the proof of purchase enclosed. There must also be a description of the problem in order to help our repairs department diagnose and fix the issue. Repairs will be made and the product will be returned and shipped back to the purchaser at no charge.

THIS LIMITED WARRANTY DOES NOT APPLY TO ACCESSORY ITEMS THAT WEAR OUT FROM REGULAR USAGE OVER TIME INCLUDING BELTS, BRUSHES, BLADES, ETC.

ANY IMPLIED WARRANTIES SHALL BE LIMITED IN DURATION TO TWO (2) YEARS FROM DATE OF PURCHASE. SOME STATES IN THE U.S., SOME CANADIAN PROVINCES DO NOT ALLOW LIMITATIONS ON HOW LONG AN IMPLIED WARRANTY LASTS, SO THE ABOVE LIMITATION MAY NOT APPLY TO YOU.

IN NO EVENT SHALL SELLER BE LIABLE FOR ANY INCIDENTAL OR CONSEQUENTIAL DAMAGES (INCLUDING BUT NOT LIMITED TO LIABILITY FOR LOSS OF PROFITS) ARISING FROM THE SALE OR USE OF THIS PRODUCT. SOME STATES IN THE U.S. AND SOME CANADIAN PROVINCES DO NOT ALLOW THE EXCLUSION OR LIMITATION OF INCIDENTAL OR CONSEQUENTIAL DAMAGES, SO THE ABOVE LIMITATION OR EXCLUSION MAY NOT APPLY TO YOU.

THIS LIMITED WARRANTY GIVES YOU SPECIFIC LEGAL RIGHTS, AND YOU MAY ALSO HAVE OTHER RIGHTS WHICH VARY FROM STATE TO STATE IN THE U.S., PROVINCE TO PROVINCE IN CANADA AND FROM COUNTRY TO COUNTRY.

THIS LIMITED WARRANTY APPLIES ONLY TO PORTABLE ELECTRIC TOOLS, BENCH POWER TOOLS, OUTDOOR POWER EQUIPMENT AND PNEUMATIC TOOLS SOLD WITHIN THE UNITED STATES OF AMERICA, CANADA AND THE COMMONWEALTH OF PUERTO RICO. FOR WARRANTY COVERAGE WITHIN OTHER COUNTRIES, CONTACT THE WEN CUSTOMER SUPPORT LINE.