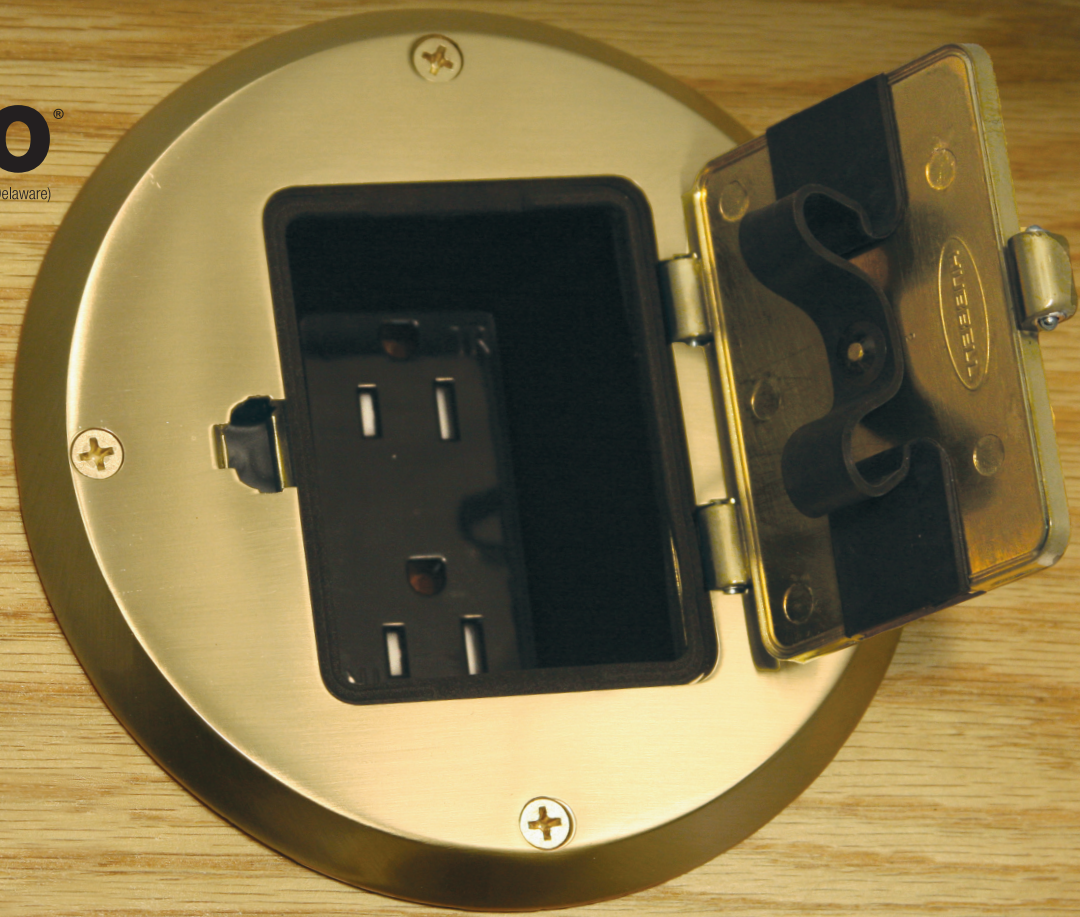




RACO®

A Division of Hubbell Incorporated (Delaware)



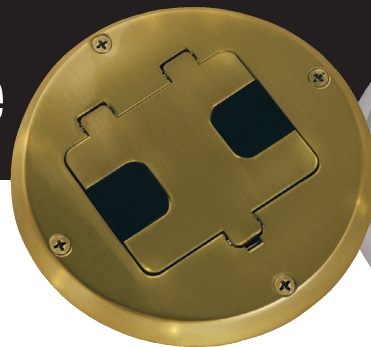
Wood Floor Box with the Benefit of a Concealed Receptacle

Applications

RACO Wood Floor Boxes allow for the placement of electrical power or a combination of power and voice/data devices. Boxes easily mount into the floor and are height adjustable (up to 3/4 inch) for optimal alignment and fit.

Features

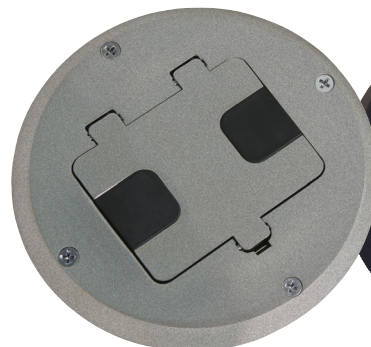
- Recessed tamper resistant receptacle allows plug to be concealed and complies with NEC® Article 406.11
- Protects electrical connection
- Prevents accidental disconnection
- No unsightly plugs on surface of floor
- Four premium finishes - Brass Plated, Nickel Plated, Stainless, and Black
- Complies with NEC® Article 406.11



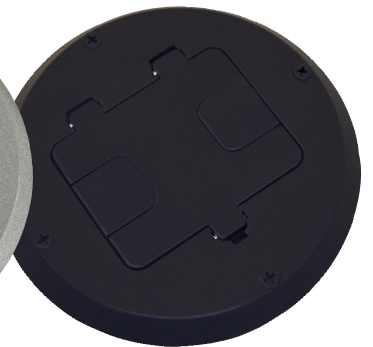
6239BP
Brass Plated



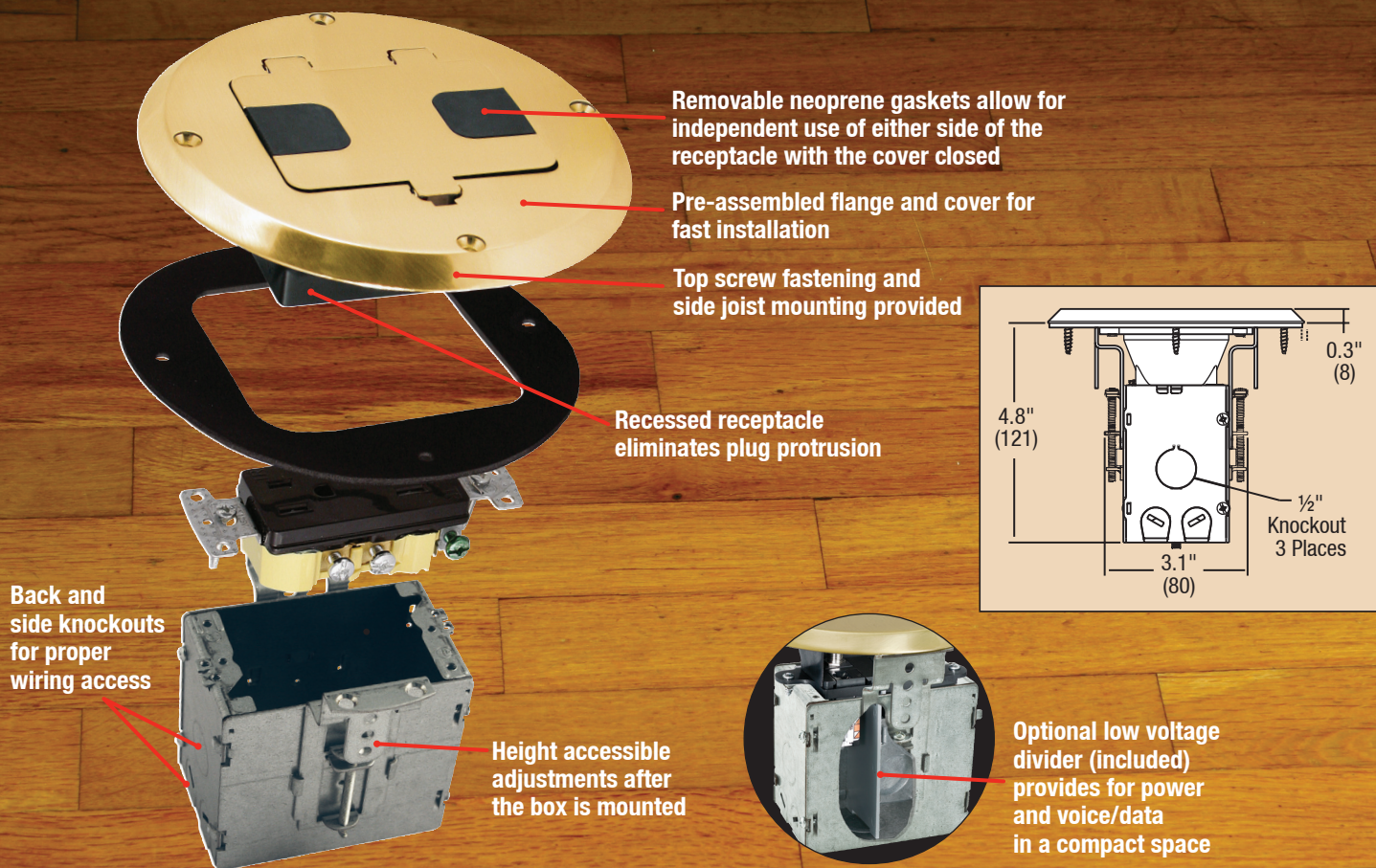
6239NI
Nickel Plated



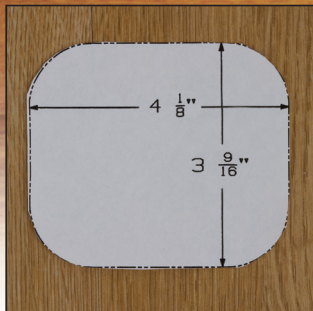
6239SS
Stainless



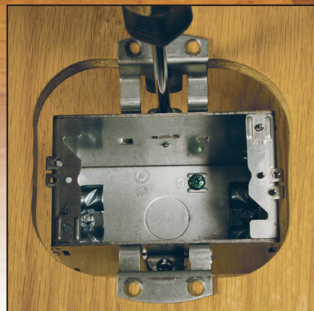
6239BK
Black



Complete instructions are supplied with each product



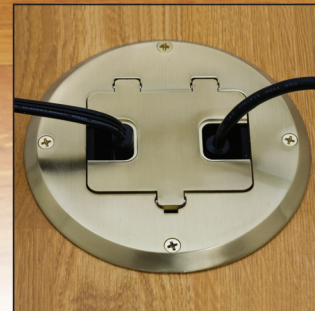
Cut opening
Template provided on the installation instructions.



Mount and adjust box
Install and wire device.

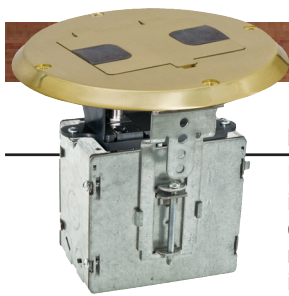


Fasten cover to floor



Installation Complete
Safe and secure plug connection

Floor Boxes for Structural Wood Floors



DESCRIPTION

Decorator duplex receptacle floor box kit; includes steel box, flange and hinged door cover assembly with 15A 125V tamper-resistant duplex receptacle; designed for installation in wood floors; mounts to sub-floor or joists

CATALOG NUMBER

6239BP
6239NI
6239SS
6239BK

COVER MATERIAL

Aluminum
Aluminum
Aluminum
Aluminum

COVER FINISH

Brass Plated
Nickel Plated
Stainless Paint
Black Paint

Pack Qty.

1
1
1
1

UPC-A

0 50169 94713 5
0 50169 94714 2
0 50169 94715 9
0 50169 94712 8



ELECTRICAL PRODUCTS
A Division of Hubbell Incorporated (Delaware)



3902 West Sample St., South Bend, IN 46619
www.hubbell-raco.com
TEL: (574) 234-7151 FAX: (574) 234-0625