

CST416M  
CT416  
ST416M

## Aquia® II 1.6 & 0.9 Gpf Toilet, Elongated, Dual Max®, 12" Rough-In

Item	Part	Description
1	TCU416CR#01 TCU416CR#03 TCU416CR#11 TCU416CR#12 TCU416CR#51	Tank Lid w/ Velcro Tape - Cotton Tank Lid w/ Velcro Tape - Bone Tank Lid w/ Velcro Tape - Colonial White Tank Lid w/ Velcro Tape - Sedona Beige Tank Lid w/ Velcro Tape - Ebony
2	TSU99A.X	Fill Valve
3	THU224	Flush Valve
4	THU314#01 THU314#CP THU314#BN THU314#PN	Push Button Assembly - Cotton Push Button Assembly - Chrome Plated Push Button Assembly - Brushed Nickel Push Button Assembly - Polished Nickel
5	THU435	Flush Valve
6	THU238	Parts Bag Assembly
7	9BU088E	Flush Valve Gasket (1 piece)
8	THU348	Flush Valve Gasket (10 pieces)
9	THU651N	Top Mounting Seat Hardware
10	9BU062E	Tank to Bowl Gasket
11	TS810DV2	Tank Top Mounting Kit
12	THU427#01 THU427#03 THU427#12 THU427#51	Toilet Mounting Hardware - for #01 and #11 Toilet Mounting Hardware Toilet Mounting Hardware Toilet Mounting Hardware
13	THU291	Socket Rough In
14	OGU147-1	Installation Template
15	9BU102E	Flush Valve Gasket (1 piece)
16	THU227	Flush Valve Gasket (10 pieces)

### Note:

Items 7 and 8 are used with THU435 Flush Valve as shown.  
Items 15 and 16 are used with THU224 Flush Valve as shown.

### Product Number Explanations

#### Two-Piece Toilet

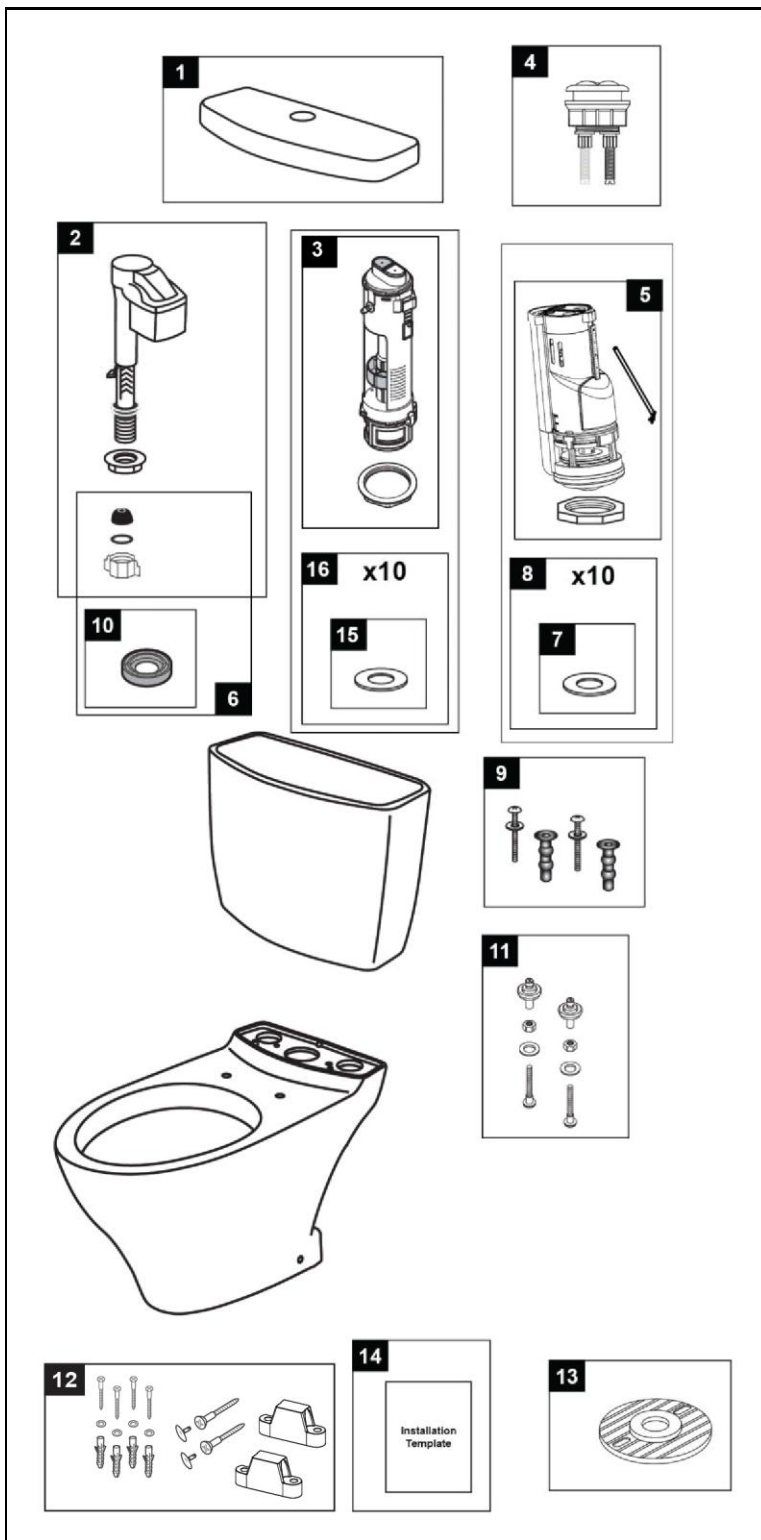
(CST) Gravity Type Toilet  
(416) Model  
(M) Dual Max®

#### Tank

(ST) Tank  
(416) Model  
(M) Dual Max®

#### Bowl

(CT) Bowl  
(416) Model



Actual Product may vary slightly from illustration.