

**SOUND
ISOLATION**

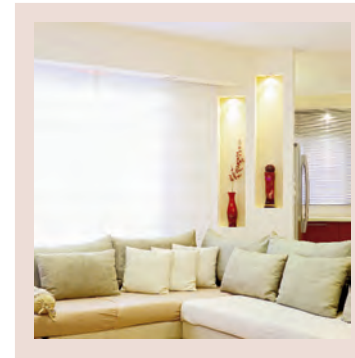
SIMPLIFIED



UltraTouch+
Sound Control System

We think a little differently here at **Bonded Logic, Inc.**

Our focus is on creating insulating solutions that combine performance and sustainability, while designing them to work better than their conventional counterparts. With this in mind, we've created the **UltraTouch+ Sound Control System™**



As our living and work places continue to increase in density, maintaining the privacy and tranquility of a quiet space becomes more difficult.

UltraTouch+ was designed to install and work effectively whether you have the skills of a weekend warrior or a seasoned installer. Typically, acoustical wall systems have been difficult to install correctly, these systems were not created for a wide range of users. UltraTouch+ allows you to achieve professional results with a user-friendly product.

and match products with difficult installations to achieve above average STC ratings. **UltraTouch+** helps solve one of today's most important construction challenges, sound isolation.

UltraTouch+ is an exciting addition to the acoustic/thermal insulation category, combining high density batt insulation and vibration damping strips to provide impressive STC ratings with an easy to install system. There's no need to mix

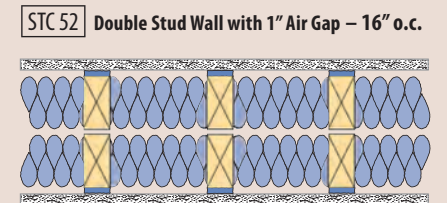
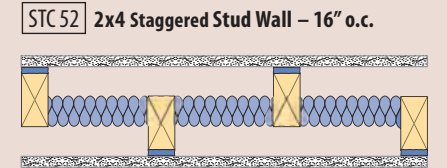
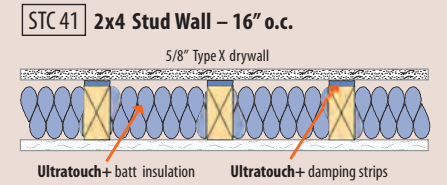


UltraTouch+ allows drywall to float, rather than have direct contact with the framing. This greatly reduces the amount of sound energy that travels through the wall.

UltraTouch+ has a Class-A Fire Rating and provides R13 Thermal performance



UltraTouch+ high density batt insulation is fitted into wall cavities in a standard installation practice. Once all the cavities have been filled, the 12mm thick by 6in. long strips are ready to be installed onto the framing.



STC Values* for typical wall assemblies:

[**STC 41**] 2x4 Wood Framing, 16"o.c., 5/8" Type X Gypsum Board on both source and receive side.

[**STC 50**] 3–5/8" 25 Gauge Metal Framing, 24"o.c., Type X Gypsum Board on both source and receive side.

[**STC 52**] Double Row of 2x4 Wood Framing, 1" Air Gap between Stud Rows, 16"o.c., 5/8" Type X Gypsum Board on both source and receive side.

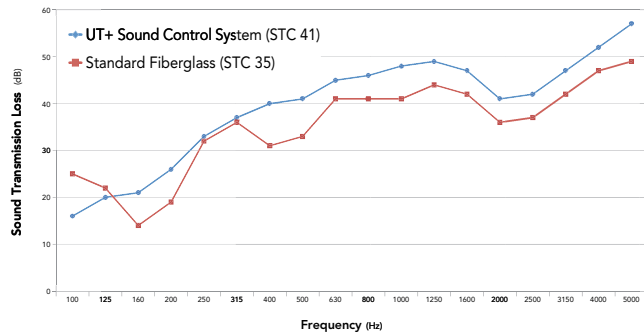
[**STC 52**] Staggered Stud 2x4 Wood Framing, 16"o.c., 5/8" Type X Gypsum Board on both source and receive side.

* Third-party lab reports are available upon request for claimed STC ratings.

The preferred method of attachment is by using a spray adhesive. On typical 8 or 9 foot vertical studs, we recommend installing (5) 6" strips spaced at even intervals. It is also recommended to install (1) 6" strip horizontally on both the top and bottom plates centered above and below each cavity. Each bag of insulation contains the appropriate number of damping strips to match the number of cavities to fill.



ACOUSTICAL COMPARISON*



PHYSICAL PROPERTIES

PERFORMANCE

TEST METHOD

PRODUCT COMPLIANCES

Surface Burning Characteristics	Flame Spread 5 (Class 1)	ASTM E-84
Fire Hazard Classification	Smoke Developed 35 (Class 1)	UL-723
Corrosion Resistance	Passed	ASTM C-739
Fungi Resistance	Passed: (No Growth)	ASTM C-739
Bacteria Resistance	Passed: (No Growth)	ASTM C-739
Moisture Absorption	Passed: (Less than 15%)	ASTM C-739
Fire Test of Building Material	Passed: (1-Hour Rating)	ASTM E-119/UL-263

California Bureau Thermal Insulation:
License No. TI-1367, Reg. No. CA-T367AZ
Environmental Specification: No.1350
ICC Evaluation Report: No.1134
LARR: ICC ER No.1134

WOOD FRAMING

Batt Specifications:	R VALUE	THICKNESS (MM)	WIDTH (MM)	LENGTH (M)	SQ. FEET
	13	3.5"	89	94"	2.40

Strip Specifications:	THICKNESS (MM)	WIDTH (MM)	LENGTH (MM)	STRIPS PER BAG
	0.5"	12	1.5"	38
			6"	152.4
				64

METAL FRAMING

Batt Specifications:	R VALUE	THICKNESS (MM)	WIDTH (MM)	LENGTH (M)	SQ. FEET
	13	3.5"	89	24.5"	622
				96"	2.44
					130.64

Strip Specifications:	THICKNESS (MM)	WIDTH (MM)	LENGTH (MM)	STRIPS PER BAG
	0.5"	12	1.5"	38
			6"	152.4
				64

* Testing based on the following type of wall assembly:

- Single layer of 5/8" Type X gypsum board on both source/receive sides
- Wood framing, 16" on-center
- All joints taped and sealed



24053 S. ARIZONA AVE.
CHANDLER, AZ 85248
(480) 812-9114

BondedLogic.com

