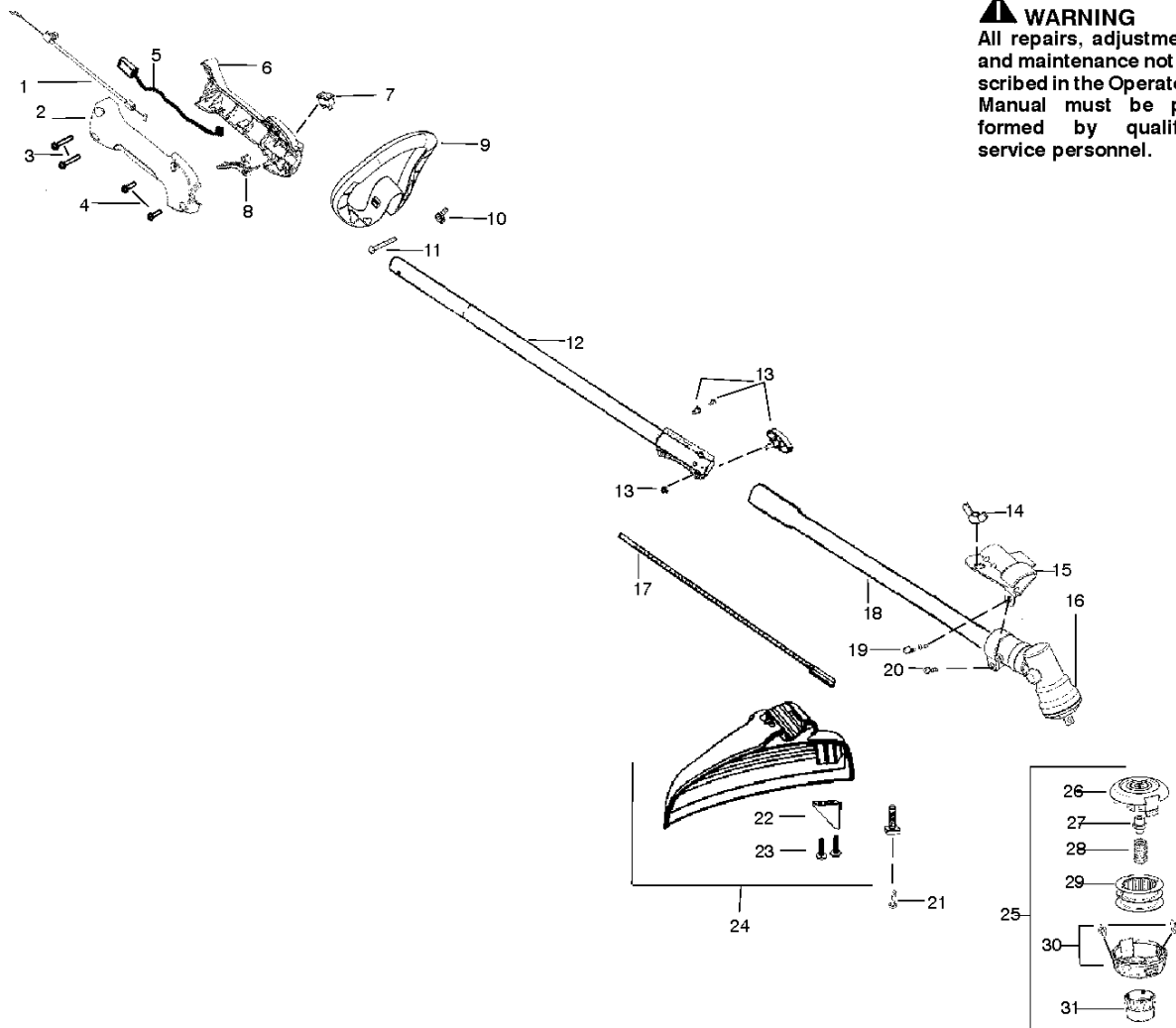




SPARE PARTS LIST

TRIMMERS/EDGERS

PR25SD, 967105301, 2016-09

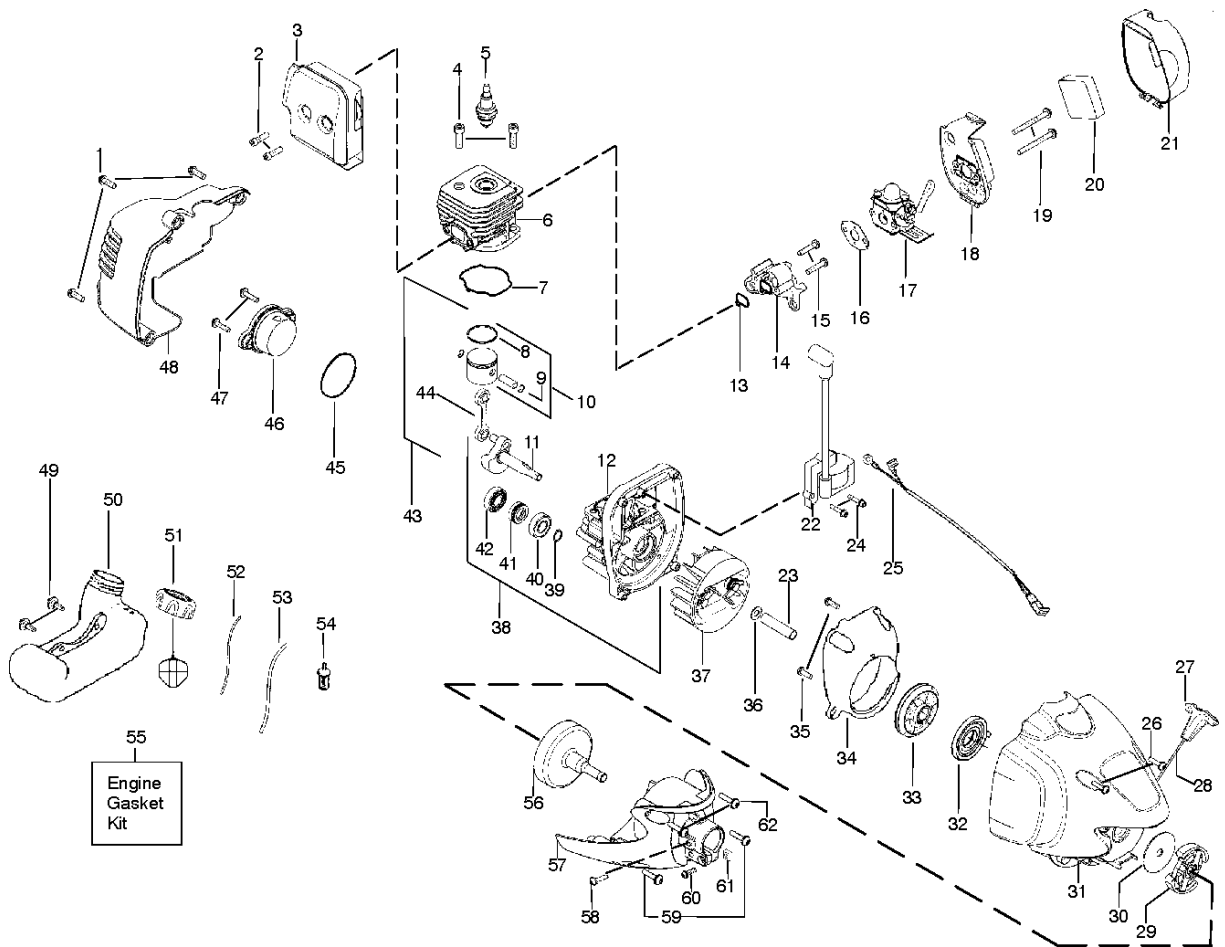


⚠ WARNING
All repairs, adjustments and maintenance not described in the Operator's Manual must be performed by qualified service personnel.

BEVEL GEAR & SHAFT

PR25SD, 967105301, 2016-09

Ref	Part No	Description	Remark	QTY	KIT
1	530 05 97-59	THROTTLE CABLE ASSY		1	
2	530 05 75-41	HOUSING	RH	1	
3	530 01 64-06	SCREW		1	
4	530 01 58-14	SCREW		1	
5	530 05 41-83	ASSY THROTTLE WIRE		1	
6	530 05 97-60	HSG THROTTLE LH EURO	LH	1	
7	530 06 95-72	SWITCH		1	
8	545 07 76-01	TRIGGER		1	
9	530 05 85-83	ASSEMBLY		1	"10, 11"
10	530 01 61-52	WING NUT		1	
11	530 01 57-86	BOLT		1	
12	575 26 02-01	KIT		1	13
13	575 29 18-01	KIT		1	
14	530 01 61-52	WING NUT		1	
15	545 15 07-01	BRACKET		1	
16	530 09 60-99	BEVEL GEAR		1	
17	545 17 30-03	SHAFT FLEXIBLE		1	
18	530 07 17-89	KIT		1	
19	530 01 60-14	SCREW		1	
20	530 01 57-75	SCREW		1	
21	530 01 58-20	SCREW		1	
22	530 05 22-86	LINE		1	
23	530 01 58-14	SCREW		1	
24	545 00 33-25	KIT SHIELD DOM NO BLADE		1	"22, 23"
25	952 70 17-18	TRIMMER HEAD		1	"26, 27, 28, 29, 30, 31"
26	537 41 93-02	HOUSING		1	
27	537 41 99-01	ADAPTER		1	
28	537 33 88-01	SPRING		1	
29	952 71 16-31	SPOOL & LINE		1	
30	545 00 33-65	EYELET		1	
31	537 41 96-01	KNOB		1	



ENGINE

PR25SD, 967105301, 2016-09

Ref	Part No	Description	Remark	QTY	KIT
1	530 01 58-80	SCREW		1	
2	530 05 89-82	BOLT		1	
3	545 22 79-01	ASSY MUFFLER/SHIELD		1	2
4	530 01 59-53	SCREW		1	
5	503 23 51-11	SPARK PLUG	NGK BPMR 7A	1	
6	530 01 25-41	CYLINDER		1	
7	530 07 17-50	GASKET KIT	KIT	1	
8	545 15 40-08	PISTON RING		1	
9	530 01 51-62	CIRCLIP		1	
10	530 07 18-33	KIT		1	8, 9
11	579 69 08-01	CRANKSHAFT ASSY		1	
12	587 79 12-01	CRANKCASE ASSY		1	40, 41, 42
13	530 07 17-50	GASKET KIT	KIT	1	
14	530 05 75-47	ADAPTER		1	
15	530 01 64-41	SCREW		1	
16	530 07 17-50	GASKET KIT		1	
17	530 07 18-11	KIT	REPAIR KIT NOT AVAILABLE	1	
18	545 07 75-01	BASE AIR BOX PP GOLD		1	
19	530 01 64-29	SCREW		1	
20	530 03 65-75	AIR FILTER		1	
21	530 05 75-45	COVER		1	
22	530 03 92-29	IGNITION MODULE		1	
23	530 05 97-58	SPACER		1	
24	530 01 63-57	SCREW		1	
25	530 04 72-78	CABLE		1	
26	530 01 63-86	SCREW		1	
27	530 05 48-34	HANDLE		1	
28	545 05 04-09	KIT		1	
29	530 05 51-22	CLUTCH ASSY		1	
30	530 09 41-89	WASHER		1	
31	576 62 21-01	FAN HOUSING		1	
32	545 05 49-01	SPRING		1	
33	545 05 04-07	KIT		1	
34	545 08 06-01	BAFFLE		1	
35	530 01 58-80	SCREW		1	
36	530 01 64-63	WASHER		1	
37	577 23 59-01	FLYWHEEL		1	
38	579 01 27-01	KIT		1	11,12,39
39	530 01 59-41	CLIP		1	
40	530 05 57-28	BEARING		1	
41	530 01 92-64	SEAL		1	
42	530 03 21-25	BEARING		1	
43	545 05 37-01	PISTON		1	10, 44
44	530 04 98-17	CONNECTING ROD		1	
45	530 07 17-50	GASKET KIT		1	
46	530 05 79-54	PLUG		1	45
47	530 01 63-86	SCREW		1	
48	530 05 75-39	SHROUD REAR BLACK		1	
49	530 01 64-45	SCREW FUEL TANK RETAINER		1	
50	581 28 19-02	FUEL TANK ASSY	INCLUDES FILTER, LINES AND FUEL CAP	1	
51	578 93 16-04	FUEL CAP ASSY		1	
52	530 06 92-47	HOSE	SMALL	1	
53	530 06 92-16	KIT	LARGE	1	
54	577 16 72-01	ASSEMBLY		1	
55	530 07 17-50	GASKET KIT		1	7, 13, 16, 45
56	530 15 02-47	CLUTCH DRUM		1	
57	545 07 73-01	CLUTCH COVER ASSY		1	60, 61
58	530 01 63-19	SCREW		1	
59	530 01 57-72	SCREW		1	
60	530 01 63-81	SCREW		1	
61	530 01 63-82	NUT--NOSE CONE		1	
62	530 01 58-14	SCREW		1	
	530 05 87-09	BULB		1	