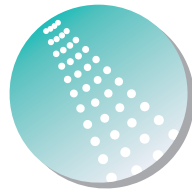


KAUAI



PULSE

SHOWERSPAs

Kauai III Rain Shower System
Model #1011-CH, 1011-BN & 1011-ORB
Owner's Manual



Kauai III Parts Legend

1. ½" x 2" NPT Nipple
2. Inlet Fitting
3. Top Escutcheon
4. Top Tee
5. Shower Arm
6. Shower Head
7. Shower Pipe**
8. Soap Dish
9. Hand Shower Holder

10. Hand Shower
11. Stainless Steel Hose
12. Diverter Body
13. Bottom Escutcheon
14. Lower Mount Screw.....(2)
15. Lower Mount (w/ Tape)
16. Wall Anchor.....(2)
17. Set Screw - 2.5mmX4mm.....(2)
18. Swivel Joint

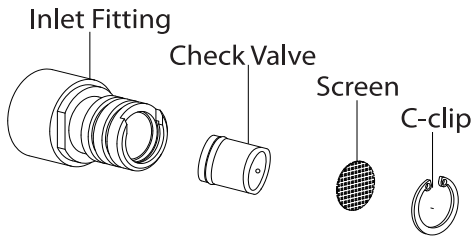
19. Check Valve
20. Set Screw - 2.5X8mm.....(2)
21. Rubber Washer(4)
22. Diverter Handle
23. 2.5mm Hex Wrench
24. PTFE Thread Sealant Tape
25. Set Screw - 3X5mm
26. Shower Pipe Nut
27. Tapered Rubber Seal

****4" SHORTER SHOWER PIPE (7) AVAILABLE BY SPECIAL ORDER**

Figure A

Check Valve Removal:

If needed, Check Valve can be removed from Inlet Fitting and cleaned to increase water pressure.



Remove C-Clip, Screen, and Check Valve. Rinse with water to clean debris. Reinstall in Inlet Fitting.

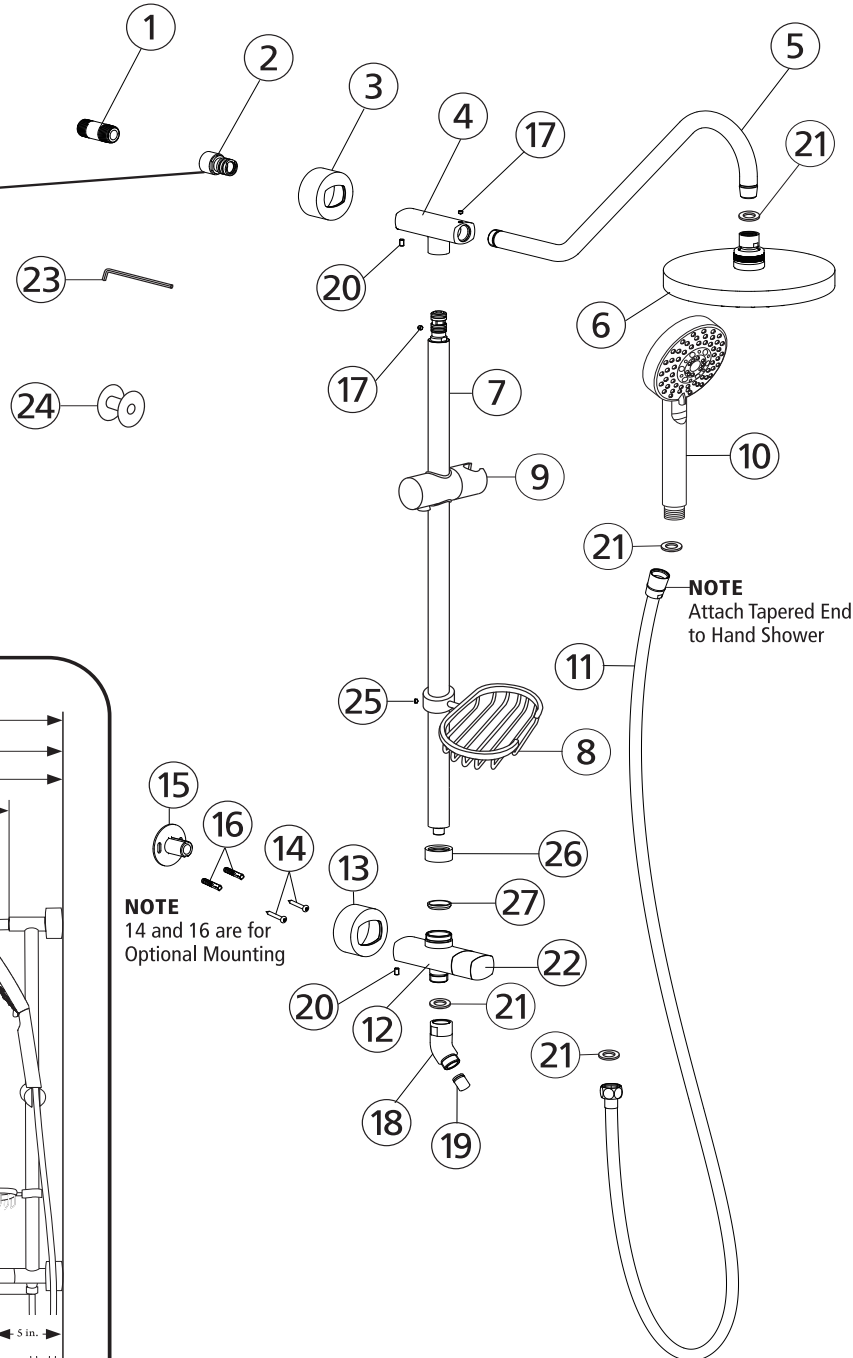
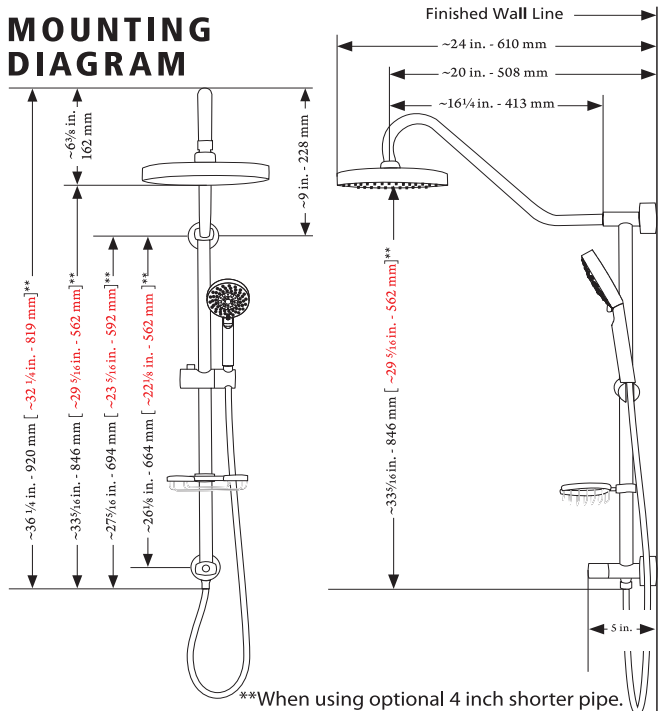


Figure B

MOUNTING DIAGRAM



NOTE
14 and 16 are for
Optional Mounting

Installation Instructions

Thank you for choosing the Kauai III Rain Shower System by PULSE ShowerSpas!

Assembly and installation of the Kauai III Rain Shower System is designed to be quick and easy. If you have installation questions or performance problems, call PULSE Customer Service toll free at 888-785-7320 or visit www.pulseshower spas.com.

Please read instructions carefully, become familiar with all parts, installation procedures and tools required. Follow steps in order presented to help avoid mistakes.

FOR NEW CONSTRUCTION OR COMPLETE REMODEL

- A hot/cold mixing valve is required (NOT INCLUDED)
- Nipple should extend ½" past finished wall surface.

TOOLS REQUIRED

Adjustable wrench, Phillips screwdriver, pencil, 2.5mm hex wrench, 3mm hex wrench

ASSEMBLY

1. Determine length of brass NPT nipple (1) needed:
 - a. Place mark on existing shower arm at wall surface. Unscrew shower arm from elbow in wall.
 - b. Measure distance from mark on shower arm to end of shower arm threads. Add ½" to this measurement, and then round to nearest ½".

Example 1: If measurement = 1¼", add ½" = 1¾", rounded = 2" NPT nipple—this is the length needed.

Example 2: If measurement = 1⅝", add ½" = 2⅛", rounded = 2" NPT nipple—this is the length needed.

IMPORTANT: If shower arm is located above tile/fiberglass wall surface you must add distance from sheetrock to face of tile/fiberglass shower wall to the above measurement.

NOTE: If supplied 2" nipple (1) is not correct length based on above formula, you must obtain correct size NPT brass nipple (sold separately), available at most hardware stores.

2. Apply generous amount of PTFE Thread Sealant Tape (24) to both ends of nipple (1).
3. Hand tighten inlet fitting (2) onto nipple (1), then nipple to fitting in wall. Use adjustable wrench on inlet fitting to tighten both connections simultaneously until both are secure with no leaks.
4. Slide hand shower holder (9) off shower pipe (7).
5. Slide soap dish (8) onto shower pipe to desired position and secure with set screw (25).

CAUTION—DO NOT OVERTIGHTEN

5. Reinstall hand shower hanger (9).
6. Insert rubber washer (21) into top of swivel joint (18) and secure onto bottom of diverter body (12). Swivel joint should move freely side to side.

CAUTION—DO NOT OVERTIGHTEN

7. Insert shower pipe (7) into top tee (4). Secure with set screw (17).

8. Slide top escutcheon (3) over top tee (4).

HINT—Lubricate escutcheon o-ring; a small amount of soapy water will do the trick.

9. Slide bottom escutcheon (13) over diverter body (12).

HINT—Lubricate escutcheon o-ring; a small amount of soapy water will do the trick.

10. Loosen set screw (20) on diverter and slide lower mount (15) into diverter body (12).

11. Push top tee (4) over inlet fitting (2) until flush against fitting. Position diverter body (12) so shower pipe is plumb (vertical).

12. Mark location of lower mount with pencil.

13. Wall surface must be clean of any residue and completely dry. Remove covering of two-face tape and reposition lower mount (15) to mark with optional mounting holes. Ensure optional mounting holes are horizontal.

14. Apply pressure to mount for 30 seconds by pushing firmly against the diverter. To ensure proper adhesion, allow one hour before using your ShowerSpa and keep area around the mount as dry as possible for the first 24 hours. Tape will be fully cured after 24 hours.

OPTIONAL: Secure lower mount with permanent wall anchors. Mark hole locations in lower mount (15). Drill 1¼" deep holes using 6mm (¼") masonry/tile drill bit. Insert wall anchors (16) and secure lower mount with screws (14).

CAUTION—LIVE PLUMBING IN WALL

15. Position shower pipe (7) parallel to wall by sliding diverter body (12) on lower mount (15). Secure diverter to lower mount with set screw (20).
16. Insert rubber washer (21) into both ends of hose (11). Connect hex head end to swivel joint (18) and tapered end to hand shower (10). Place hand shower (10) into adjustable hanger (9).
17. Insert rubber washer (21) in shower head (6) and tighten securely to shower arm (5).

Usage

Diverter valve controls the shower head and hand shower function. Turn diverter counterclockwise for hand shower, clockwise for shower head. Position between for both functions.

Turn face of hand shower to switch settings.

Adjust the hand shower position by depressing the button on the hanger and sliding up or down.

Always turn cold water on first to help prevent any accidental burning or scalding; especially for children and elderly.

The Kauai II is equipped with Spray Straight™ technology in the tips of the showerhead and hand shower. If the stream becomes obstructed from mineral deposits, simply rub the soft tips with your finger to loosen the deposits.

DO NOT use any part of the Kauai III Rain Shower System as a support device.

Care and Maintenance

To keep your ShowerSpa looking new, wipe down after each use with a soft cotton cloth.

Protect your ShowerSpa from hard water stains and mineral deposits by periodically using an auto spray wax.

Clean using mild liquid soap and a non-abrasive sponge or cloth. Rinse with clean water.

If the flow rate of your ShowerSpa is less than desired or reduces over time, flow restrictors located in neck of showerhead and handshower can be removed. If further assistance is required please call Tech Support at 1-888-785-7320 and we will be happy to assist you.

***Do Not Use Any Kind Of
Chemicals Or Abrasives!***

Manufacturer's Limited Warranty

PULSE ShowerSpas, Inc. warrants that all ShowerSpas are free from defect in workmanship and/or materials for a period of three years from the date of purchase. This warranty extends to the original purchaser only and is non-transferable.

This warranty does not cover, and PULSE ShowerSpas will not pay for conditions, malfunctions or damages resulting from (1) normal wear and tear, improper installation (whether performed by a contractor, service company or the consumer), improper maintenance, misuse, abuse, negligence, accident or alteration; (2) the use of abrasive, caustic or "no-rinse" cleaning agents; (3) the use of the product in any manner contrary to the product instruction; (4) conditions in the home such as excessive water pressure or corrosion.

Should any ShowerSpa be determined by PULSE ShowerSpas, Inc. to be defective in normal residential use, at the option of PULSE ShowerSpas, Inc., such product shall either be replaced or repaired and returned to the customer free of defects. The consumer shall give notice of any defects to PULSE ShowerSpas, Inc. within thirty days of discovery of such defect.

Proof of purchase (original sales receipt) must be provided to PULSE Shower Spas, Inc. with all warranty claims. PULSE ShowerSpas, Inc. is not responsible for labor charges, removal charges, installation or other consequential costs. In no event shall the liability of PULSE ShowerSpas, Inc. exceed the purchase price of the ShowerSpa.

Some states/provinces do not allow limitations of how long an implied warranty lasts or the exclusion or limitation of such damages, so these limitations and exclusions may not apply to you. This warranty gives the consumer specific legal rights. You may also have other rights that vary by state/province.

Follow manufacturers recommended installation. Use caution with children under ten years of age. Do not use your ShowerSpa as a support device. Do not use harsh chemicals or abrasives when cleaning. Always turn water supply off when servicing your ShowerSpa.

PULSE
SHOWERSPAS

Pulse ShowerSpas, Inc. ~ 297 Anna Street ~ Watsonville, CA 95076 ~ 888.785.7320
info@pulseshower spas.com ~ www.pulseshower spas.com ~ support@pulseshower spas.com