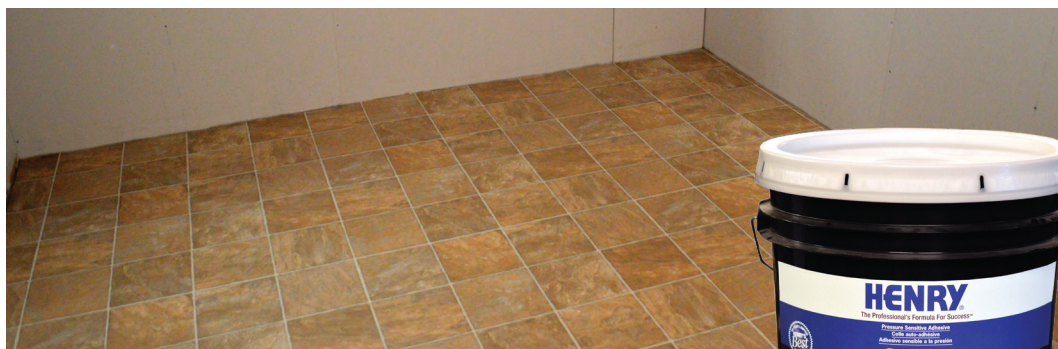


# HENRY®

The Professional's Formula For Success™



## HENRY® 650 R Pressure Sensitive Adhesive



Premium pressure sensitive adhesive with releasable or permanent bonding properties that firmly adhere the floor yet enable easy removal of the flooring at any time with no damage to the subfloor.

**Use for:** Fiberglass-reinforced sheet vinyl flooring, solid vinyl tile (LVT) and solid vinyl plank (LVP) - residential installations only, vinyl-backed sheet flooring and vinyl-backed carpet tile.

### Key Features & Benefits:

- Verastile – 3 in 1 flooring applications
- Moisture and alkalai resistant – up to 90% RH and pH of 11
- Use as a pressure sensitive or wet-set adhesive
- Contributes towards LEED® points

### Bonds To:

**On all grade levels:** concrete, cementitious underlayments, suspended APA-grade underlayment plywood (untreated), radiant-heated subfloors where temperatures do not exceed 85°F (29.4°C), terrazzo, skim-coated ceramic tile installations, metal, certain epoxy coatings and fully adhered, non-cushion backed resilient.

PLEASE READ FULL TECHNICAL BROCHURE AND SDS BEFORE INSTALLING ([WWW.WWHENRY.COM](http://WWW.WWHENRY.COM))

### Coverage:

**Non-porous: U-notch**  
1/32"D x 1/16"W x 1/32"A  
300 sq. ft. / gal.

**Porous surfaces: Square Notch**  
1/16"D x 1/16"W x 1/16"A  
125-150 sq. ft. / gal.

**Fiberglass-Reinforced Sheet Vinyl; Vinyl-Backed Carpet Tile: Short-Nap Roller**  
3/16"-3/8"  
300 sq. ft. / gal.

**SystemOne™**

**GREENLINE**  
ENVIRONMENTAL TECHNOLOGY

# HENRY®

The W.W. Henry Company  
(888) 512-7339

[www.wwhenry.com](http://www.wwhenry.com)